



Millenium Conference brought out young people

pages 12-13



Unique glass blower keeps tradition alive

page 11

Spring 2000 Schedule Updates

Check this out before registering

pages 4-10

KAPI'Ō

<http://www.kcc.hawaii.edu/news/kapio>

Kapi'olani Community College

VOL 33 No.11 November 9, 1999

Paramedics: not for the weak at heart

Jennie Fujimoto
Editor

Paramedics are the real-life heroes when it comes to saving lives. No one really understands the degree or the stress that paramedics undergo other than the paramedics themselves. They deal with everything from upset, distressed families to intense bodily injuries, and even death.

Alan Young, KCC emergency medical services teacher in the Mobile Intensive Care Technician (MICT) program said, that paramedics are often put in situations that are a threat to their own lives. They do more than save lives; they deal with the family and friends of the injured. It's not easy for these people who are upset, moody, and not the most understanding. Paramedics are responsible for calming down the family, which often impedes procedures for helping patients. They have the training, experience, and the words to turn a frantic situation into a calm one. Young, who is also a City and County paramedic, runs scenarios for his students to train them for these types of situations.

Laughing, Young remembers back to his first day out on call. He said, "I had everything lined up in my mind, I knew what I was going to say and how I was going to say it." He started off saying, "My name is Alan" and went blank.

Tunnel vision is common with most interns. They can reach the site of a three-car accident with many injured bodies, gas flowing on the ground, a fire in the back; but only see one person lying on the ground. Everything else surrounding that one person is blocked out. "Experience lets them see the entire picture," said Young.

Before applying for the MICT program, students must accomplish the Emergency Medical Technician program and intern for one semester. MICT students intern for a minimum of 18 months to get on the road experience. On the average, most students intern for about five years.

Young works the midnight shift in Wahiawa and sees many traffic accidents and medical illnesses. Since he works in a middle-class area, he doesn't see much drug abuse. He said that the types of cases

depend on the area you work in. He adds, that on the average, interns receive roughly 400 calls a month.

All the blood and gore that paramedics see become routine after a while. Young said that you run across things that are gruesome, but you move on, you do your job.

Jamie Goo, KCC student and Aiea MICT intern for City and County, was one of the paramedics called to the Xerox shooting last week. As described in the news, the bodies of the victims lay in a pool of blood. Many heads would swiftly turn away and hearts would drop in seeing such a thing, but Goo describes it like any other shooting. "It's routine for me," he said, "I turn numb after a while, but I deal with it. It's just part of my job."

Obviously, not everyone is cut out to be a paramedic. Young said that paramedics must be flexible, they have to deal with situations appropriately and "every situation is different and you react to the situation effectively. You have to want to do this job and like what you do because you can't do it for the money," said Young.



Distance education, learning for the future

Laura Meyer
Staff Writer

Distance learning has become one of the bright spots in an otherwise tumultuous UH system. Implementing distance learning into the UH system is part of a statewide initiative to utilize digital technologies and to bring academics to people who are under served, live in remote areas, or who are just too busy to attend classes on a traditional university campus. Most distance learning classes are offered via the internet, cable television, or interactive television, but other forms of delivery include remote classrooms, and multimedia. Currently, UH and all its' surrounding community colleges are taking part in the program, including KCC, who offers several courses via the internet. Classes that are taken remotely are fully transferable based on the content of the course and not the mode of delivery, which means that a class taken remotely is judged under the same cri-

teria as courses taken on a college campus.

The success of distance learning in Hawaii can be seen in the growing number of classes and degrees offered remotely. This year UH has implemented the TIRM program, which is part of the communications department and the first program to offer an entire masters degree via distance learning. UH has also received a grant to develop an entire undergraduate and graduate program in the information and computer science department, which students will be able to earn through distance education. Community colleges throughout Hawaii are also moving in the direction of distance learning. Currently HCC is offering several of its' courses through cable television, while many of the other campuses, including KCC, offer classes via the internet or by remote classrooms. The goal of the community college system is to be able to offer an entire liberal arts degree through distance learning. There is currently a proposal under review that, if approved, could begin as early as Fall 2000.

While distance learning isn't for everyone there has been positive feedback from both students and teachers concerning the depth of the curriculum, more student to student interaction, and one-on one time spent with the instructor. There has also been a slight increase in test scores throughout the UH system for classes taught remotely. One instructor, who has taught several classes via the internet, believes that distance learning tends to utilize a students time more effectively than classroom instruction, as well as weeding out those students who are not dedicated to their studies, and offering, otherwise shy students, the opportunity to participate in group activities.

Continued on page 14

Biotechnology, KCC to develop new medical degree

Michelle Allman
Staff Writer

The dictionary defines biotechnology as: The engineering and biological study of relationships between man and machine; the application of science, especially to industrial or commercial objectives, as related to life of living organisms.

When John Berestecky, assistant professor of microbiology, was asked in the early spring of '99 about doing a biotech program at KCC, his first thought was "We already have one, the Medical Lab Technician (MLT) program." Well, almost.

The purpose of the MLT program is to teach students how to work in a medical laboratory in a safe, accurate and responsible way. This involves learning to perform all the basic laboratory tests on blood, urine and other body fluids which help physicians diagnose disease.

The curriculum involves several chemistry and biology courses, and the students learn many skills which are applicable to any biology laboratory. Such skills include the sterile technique needed to work with bacteria and viruses, quality control and the ability to work with complex laboratory equipment.

Berestecky emphasizes that KCC's Medical Lab Technician pro-

gram, headed by Marcia Armstrong, "is excellent and well respected in the medical community. We should appreciate the strengths of this program."

Armstrong and Berestecky look at biotechnology from two different, yet closely related, perspectives. Armstrong, coming from a medical standpoint, thinks of "pharmaceuticals and medical applications," whereas Berestecky sees it from a more biological point of view: Any of the branches of applied biology, the practical applications of biological research (like genetic engineering and the generation of recombinant DNA: the shuffling of genes and DNA to create plants, animals and bacteria with new characteristics).

Their similarities come together in the area of generating recombinant DNA. Armstrong refers to the creation of the "Heptivax" or the "Hepatitis B" vaccine. Berestecky points to the engineering of coffee beans without caffeine and glowing mice from UH's biotech labs. This is where Armstrong and Berestecky see the Biotechnology program as a marriage of the two existing programs, "with a few tweaks," Berestecky adds.

Initial funding for the developmental stage will come from the Governor's Millennium Task Force

and also from a Title III grant the college received not long ago. It included a Biotech and Math initiative, which will be included in the overall scheme of things.

Armstrong is currently developing a survey that will go out to a list of biotech providers and related industry partners in the community. The goal is to begin a network with those involved in the biotech industry.

Continued on page 14

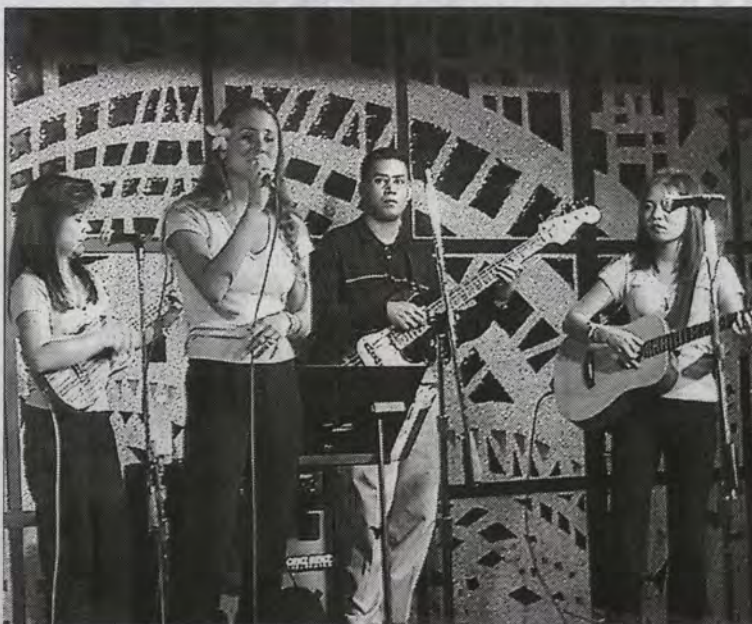


photo by Asian Robles
Joy performed at the OSA Outdoor Concert on the KCC Mall, Friday, November 5.

Why it sucks to be nice - are you too nice?



I still remember days long ago when I had my first job at Wet Seal. The store was crammed with people busily shopping. If that wasn't bad enough the register area was worse; two cashiers working for the 15 people in one line. Everyone had the perennial scowl, but one lady stood out. Besides the fact she was talking louder than everyone about having to work at 3 p.m., she finally had the nerve to walk to the front of the line, and demand to speak to a manager. We all curiously watched to see if her behavior was going to get any results. It did. She was rung up immediately.

Her selfishness repulsed me. The way she inconvenienced everyone and put all of Wet Seal in a bad mood bothered me. I never want to put other people in a bad mood. After that experience I vowed to be nice to everyone. I had this stupid idealism that niceness was the way to go. Well I'll tell you, it sucks.

I carried the memory of that experience throughout my jobs. It was only until working at Kincaid's that I realized niceness "sucks". A co-worker who we shall name Lola would constantly criticize me; whatever I did never pleased her. For instance I would be setting the dining room and the phone would ring. While Lola was busy chattering about her weekend to a fellow co-worker, I would scramble to answer the phone. After I finished writing down the reservation she would then ask, "did you do my paperwork yet?" When I said no and apologized profusely, she would grumble to someone about it. The truth of the

matter was that the paperwork was her responsibility. After a while I actually managed to do my duties and her paperwork before she came in. I had this stupid idealism that I could actually please her.

When I would seat the customers and initiate a conversation with them, she would complain, "We need to hurry back to the front. We can't take our time, we need to rush". Instead of telling her that I had to do a menu count and a table check, I again profusely apologized. Everytime after that I'd rush to the front, but it never seemed fast enough to her.

After a while I got frustrated. Now management, servers and other hostesses, all had a wonderful opinion of me thanks to Lola. I was always "nice" because I felt that in the end things would work out. I was dead wrong. It finally came to a point where everyone would ask, no expect me to do things. After a while no one asked "Hey Cherise can you....?" now it was, "Cherise I need this done."

I don't blame them though and I don't hate Lola. They taught me a wonderful lesson of life. Niceness sucks, if you not assertive. People will take advantage of you. I was always nice and courteous to everyone but was always treated worse and given more to do than everyone else.

I've asked many people "why" and got the same response, "The squeaky wheel gets the oil." It seems that in the work environment nice people are taken advantage of. They are not rewarded for their niceness,

but are given more work and less appreciation.

In society today, "niceness" I realized is a sign of weakness. When you are nice, people think you are weak. They feel it's their chance to take advantage of those who are nice. People learn that to get ahead it is often acceptable, even necessary, to step on others.

Assertiveness can teach you to control yourself, not to let others control you according to the dictionary, the verb "assert" means to state or affirm positively, assuredly, plainly, or strongly." Most people mistake the essential difference between being selfish in the bad sense and selfish in the good sense.

So how do you know if you're too nice, and not assertive enough? Here take this quiz:

- Your friend, who is usually late, is supposed to meet you and some friends to go see a movie. All of your friends except her show up. You wait 15 minutes. Then:
A. Call her, then leave as planned.
B. Wait 10 more minutes. Maybe she has an emergency.
- When you have to turn down an urgent favor from friends, you:
A. End up feeling guilty - you don't want them to be mad at you.
B. Promise to help out next time.
- A good friend asks you to borrow a fairly new outfit - again - because she's got a big date. You:
A. Tell her yes. It only happens now and then.
B. Offer to help her find a new outfit instead.
- A friend calls you to chat about

her new boyfriend. You are exhausted from work. You:

A. Tell her that you are tired, and promise you'll call her as soon as you have some time.
B. Yawn a lot, hoping she'll take the hint.

5. As usual your friend asks to borrow five dollars to buy a meal at the cafeteria. You:

A. Wait until he's in a good mood and explain how much this bugs you.
B. Lend him the money - it's faster and you'll avoid a scene.

6. You're throwing a party, at the last minute, a friend calls and asks to bring a boyfriend and four of his rowdy friends. You:

A. Say O.K., hoping that they will not pick fights.
B. Tell your friend you're sorry, but it's not a good idea to invite her boyfriend's rowdy friends.

7. A fellow classmate is always asking to borrow folder paper from you. When she asks you for the fifth time. You:

A. Gently point out that the bookstore sells folder paper, so she can get her own sometime.
B. Give her what she wants so you can stick friends.

8. When you have a fight with your boyfriend, and you know he's wrong, your likely to:

A. Stand your ground and explain why you're upset.
B. Say "sorry" just to end the fight. Because fights happen in the best of relationships.

Scoring: Give yourself two points for every A answer in questions 2, 3, 6, and one point for every B. Give yourself two points for every

ery B answer in questions 1, 4, 7, 9, and one point for every A. Total your points.

If you scored between 14-16 points you often reach out to others at your own expense. Perhaps in an effort to gain approval. Keep in mind you can't please everyone, and regain control by saying no to unreasonable demands. Those of you who scored between 10-13 points you're nice, but you do go overboard sometimes, perhaps out of guilt. Look for patterns with specific people, and don't let guilt guide your actions. When your nice to people, make sure it's not for them, not to make yourself feel better. Those who scored between 7-9 points you're well balanced between asserting your own needs and meeting those of others. Don't be afraid to go out on a limb now and then for someone else.

By: Cherise Suzuki

Fall Crossword Answer

3. halloween 4. cool 8. campfire
10. birds 11. thanksgiving
12. squirrel 15. leaves 16. bonfire
17. college 1. corn 2. elections
3. hayrides 5. hayfever 6. cider
7. reunions 9. football 13. rain
14. fall

KAPI'O

Honolulu, HI 96816
Phone: 734-9120
Fax 734-9287

Kapi'o is published Tuesdays by the Board of Student Publications at Kapi'olani Community College, University of Hawai'i. It is funded by student fees and advertising. It reflects the views of the editors and writers who are responsible for its content. Circulation: 3000.

Co-Editors
Jennie Fujimoto, Laura Meyer
Production Editor
Barry Yukihiko
P. 12-13 Editor
Donovan Slack
Copy Editors:
Michelle Allman, Tui McBraun
Photographer:
Kimberlee Tanaka, Asian Robles
Reporters:
Sherie Char, Andrew Hamilton
Landon Iwamura, Tuia'ana
McBraun, Kimberlee Tanaka, Kevin
Kaneshiro, Krystal Sakata, Fei
Garrison, Michael Sarpy, Kristina
Wright, Janelle Nishida
Page Design:
Tylar Umeno
Cartoonist:
Asian Robles
Kapi'o Online Editor:
Tad Adachi
Adviser:
Wini Au

Kapi'o encourages all students, faculty and staff to submit material for publication. However, Kapi'o reserves the right to edit any submission for length and content. Publication is not guaranteed. Submission on disk with accompanying hard copy preferred.
DEADLINE: Wednesday, 3 p.m.
NEXT ISSUE: November 16, 1999

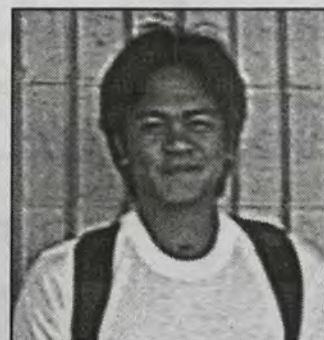
SPEAK OUT!

Questions & Photos by Kimberlee Tanaka

What did the Xerox shootings make you think about?



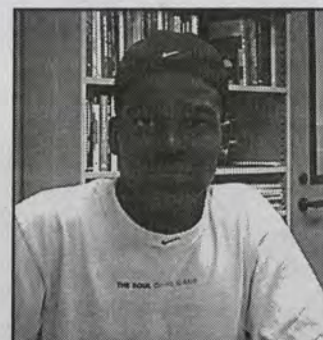
H.K. Ouaneisouk
That Hawaii is not as safe a place to live which may deter tourists.



Jonathan Isabelo
I think about how messed up that person is to shoot 7 people.



Tina Campbell
It was a wake-up call that Honolulu is not quite a tropical paradise.



Tobias Boyce
Shocked. You'd expect that on the mainland but not Hawaii.

Surgical tech program at KCC is first in state

Kevin Kaneshiro
Co-Editor

Begun in the summer of 1998, KCC's Surgical Technician program is the first of its kind to be offered by a formal educational institution in the State, and seeks to satisfy a need within the community for qualified surgical technicians.

Prior to the program, the only training and instruction offered were those done "in-house" by local hospitals and medical facilities, said nursing instructor Chris Nadamoto, who developed and heads the program.

The one year program provides students with the necessary instruction (900+ hours) and hands-on training (125+ surgical cases) needed to sit for the National Certification Examination that is necessary to work as a qualified surgical technician. These strict requirements translate into a six hour lecture on Tuesdays, clinical training in hospital operating rooms on Thursdays and Fridays and a lab class held at St. Francis Hospital on Saturdays. Despite this grueling schedule Nadamoto said, "Last year, 15 students entered the program and 15 graduated. There was no attrition, which is absolutely amazing."

This year's class of 15 students is comprised mostly of students with a medical background, who have opted for the surgical technician program due to its short length and lack of a waiting list. Many students also see working as a surgical technician as a good stepping stone into the medical field.

Currently, the class is at a point where they are actively participating in actual surgical procedures under the supervision of RN or qualified surgical technician preceptors at various hospitals. According to



From left, assistant, surgeon, student John Snyder, and preceptor



Student Kathleen Matutino on the right with surgeon.



Kris Hillman setting up for the abdominal case

nearly every student in the class, it is this opportunity to be involved in the operating room that is the most fascinating and interesting aspect of the program.

"The operating room clinical experience provides the learning student with actual hands-on experiences with patients, surgical instruments, operating procedures and health professionals," remarked current student Geoffrey Guzman. Another student, Rachael Worley stated, "Being in actual surgery is very intense; amazing to see the anatomy, it's not something many people get to do." The ability of the program to provide students with this kind of experiences is due in large part to the cooperation of many local hospitals, according to Nadamoto. Besides their participation in the clinical training of the students, the hospitals also donate surplus supplies to the program to allow students to familiarize themselves with the equipment. "They really are partners with the program," she stated.

The demand for qualified surgi-

cal technicians within the community is due to the important role they perform during all surgical procedures. Prior to surgery they are responsible for setting up the operating room with the required equipment and instruments, during sur-

gery they assist the surgeon or anesthesiologist by passing instruments and supplies, and performing other duties and following surgery they help to clean and restock the operating room.

"A surgical technician is one of

the most stressful jobs you could deal with since you're dealing with life and death. It's not like working in a party shop blowing up helium balloons, but it's a job where every day is a learning situation," said Nadamoto.

Graphic converter, an inexpensive option in image editing for Mac computers

Janell Nishida
Staff Writer

Most professionals and graphic hobbyists agree that Adobe Photoshop is the hands-down winner in image-editing software, however, it's steep price, of about \$600, keeps many people away.

For PC users, an inexpensive alternative to Photoshop is Paint Shop Pro, costing about \$100, compared to the much higher priced Photoshop. But what do you do if you're a Mac user? Enter Graphic Converter.

GraphicConverter opens and

saves images in almost any graphics format imaginable. Like Photoshop and Paint Shop Pro, GraphicConverter has many high-end editing tools to manipulate graphics, including the ability to use Photoshop's plug-ins.

Another useful feature is their slide-show window. There is also a browsing and batch-conversion featured in the software. You can also export to most common formats, including startup screen format and QuickTime.

According to the manufacturer, "documentation and support is su-

perb for this program." So if you're a Mac user and interested in exploring new graphics software, you can download this shareware program at no cost, and if you decide to keep it, you only pay \$35—a real bargain for such a high-powered graphics program.

GraphicConverter can be downloaded from http://www.lemkesoft.de/us_gcdownload.html. It's a hefty 2.5MB, so expect a lengthy download time, depending on your modem speed. Requirements: color-capable Mac and System 7.

Profiles on education: *Ronnie Mulford's Turning Point*

Michelle Allman
Staff Writer

Ronnie Mulford, instructor of Turning Point here at KCC said, "there comes a time in the lives of many, when you find yourself at a place in life (hopefully) when you know what it is that you don't want to do anymore. You've figured out the rules of the road. You've come to understand the randomness and uncertainty of some things in life."

"You realize that this time you have on Earth is limited and too short to waste your energy on things (and sometimes people) that are holding you back. You know what life's about; the ups and downs, chances, certitudes and uncertitudes."

"You're ready for a change." Mulford explained, "Instead of a sense of life affecting you (he did it to me, she did it to me, they did it to me, the world did it to me) you move to a sense of cause (I'm going to change this, I'm going to get more purposeful in my life)."

The Turning Point program at KCC offers a safe space to explore one's self. The goal of the program is to help you find out who you are,

what you want out of life, and how to achieve it.

Mulford explains that her role in the class is to share what she refers to as the "boiler plate" questions: Who am I? Where am I going? How do I get there? She shares her own experiences and directs students to the appropriate resources that are available here at school and in the community at large.

There are no age, race, occupational, vocational, economic or social boundaries to this time on one's life. There are as many different types of people for even more kinds of reasons that are faced with a turning point in their lives.

Turning point, in the dictionary, is defined as a point at which something turns, changes or reverses in direction or motion. A point at which a crucial decision must be made. A decisive moment.

The first question, who am I, means different things to different people. Some question their vocation, for others it's something deeper, more personal, maybe even spiritual.

Some people find themselves feeling a sense of loss and emptiness in their life. The loss of a life, a can-

cer victim, someone coming out of an abusive marriage, maybe a stay at home housewife or someone getting out of drug rehab.

The second question is, where am I going? At this point, some may decide that they are content with who they are, and where they are, and that's O.K. However, there are those for whom this question is especially compelling, a desire or need to improve their lot in life, personally, spiritually or vocationally.

The last question, how do I get there, is a very powerful concept implying action, taking a risk, taking the next step. This is the time to investigate opportunities, ask relevant questions, network, and then, ask yourself how doable is this in my life. After some initial leg work, you may find that the grass isn't really greener on the other side. But if you don't look into these questions and opportunities, you'll find yourself forever saying, should have, would have, could have.

Mulford likes to share with her classes timeless tidbits of wisdom. "Inch by inch, everything's a cinch," she said and "remember the a'ama crab syndrome? You put a bunch of

a'ama crabs in a basket, they try to get out, climbing up the sides, only to get pulled back down by the other crabs stuck at the bottom of the basket."

Sometimes you must remove yourself from the drama of other people's lives, from the lives of all those who would suck the very life out of you, take whatever they can from you. You have to step away and then step up. Once you do, you'll see that others will step up in turn just to keep up with you and they'll appreciate you more for it.

Mulford doesn't see herself as a "guru" but rather as a facilitator, sharing experiences and resources with her classes. She is an amazing woman, rightfully proud of her accomplishments and yet, most humble.

When Mulford went back to school she said, "I had mostly women teachers," and that "they shared their experiences and resources with me and gave me a hand up and an insight into the 'good old girls network.'"

In her third semester as a student at Leeward CC, Mulford signed up for a class entitled, Encounters

(something similar to the Turning Point class she is teaching now). She was amazed with what she describes as, "the ability to help people help themselves." She could at last see some light at the end of the tunnel.

At one point she was the one on the bottom, holding out her hand for guidance and direction, Mulford now finds herself, somewhere a little higher up. Sometimes she still reaches up, but now she can also hold out her hand to someone else needing help. She describes herself as having become one of the links in a chain of helping hands helping others to help themselves.

Mulford is a very busy woman. In addition to her work here at KCC teaching "Turning Point" twice a year (in the Fall and Spring), and IS 105b, an interdisciplinary course for new (mostly young) students, she also teaches the Masters of Counseling Science Program at Chaminade University. She works part-time for the Department of Education, has her own private practice, and is finishing her Ph.D. at UH Mānoa in Educational Foundations, a process that has taken her some 10 years to complete, inch by inch.

Updated Schedule of Courses, Spring 2000

Corrected Spring 2000 Final Examination Schedule

Class Start Time	Exam Symbol
MW, MF, MWTh, MWF, MTWTh, MTWThF or DAILY (Note: Class Start Time listed is a range of times. For example classes that start at 7:30, 7:45, 8:00, 8:15, 8:30 and 8:45 are all in the D-1 range.)	D-1 D-2 D-3 D-4 D-5 D-6 D-7 D-8 D-9
7:30 - 8:55 a.m. 9:00 - 9:55 a.m. 10:00 - 10:55 a.m. 11:00 - 11:55 a.m. 12:00 - 1:25 p.m. 1:30 - 2:25 p.m. 2:30 - 3:25 p.m. 3:30 - 4:25 p.m. 4:30 - 5:25 p.m.	
TW, TTh, TWTh, TWF, TThS, or TWThF (Note: Class Start Time listed is a range of times. For example, classes that start at 9:00, 9:15, 9:30 and 9:45 are all in the D-12 range.)	D-11 D-12 D-13 D-14 D-15 D-16 D-17 D-18 D-19
7:30 - 8:55 a.m. 9:00 - 9:55 a.m. 10:00 - 10:53 a.m. 11:00 - 11:55 a.m. 12:00 - 1:25 p.m. 1:30 - 2:25 p.m. 2:30 - 3:25 p.m. 3:30 - 4:25 p.m. 4:30 - 5:25 p.m.	
W, WTh, WF (Note: Class Start Time listed is a range of times. For example, classes that start at 12:00, 12:15, 12:30, 12:45, 1:00, 1:15 are all in the D-5 range.)	D1 D3 D5 D7 D9
7:30 - 8:55 a.m. 10:00 - 11:55 a.m. 12:00 - 1:25 a.m. 1:30 - 3:25 p.m. 4:30 - 5:25 p.m.	
MW EVENING (Note: Class Start Time listed is a range of times.)	E-1 E-2 E-3
5:30 - 6:55 p.m. 7:00 - 8:25 p.m. 8:30 - 9:00 p.m.	
TTh EVENING (Note: Class Start Time listed is a range of times.)	E-4 E-5 E-6
5:30 - 6:55 p.m. 7:00 - 9:25 p.m. 8:30 - 9:00 p.m.	
Examination Time Block	Thurs.* Fri.* Sat.* Mon.* Tues.* Wed.
7:45 - 9:45 a.m.	May 4 May 5 May 6 May 8 May 9 May 10
10:00 - 12:00 noon	D-12 D-14 D-16 D-18 E-4 E-5
12:15 - 2:15 p.m.	D-12 D-14 D-16 D-18 E-4 E-5
2:30 - 4:30 p.m.	D-12 D-14 D-16 D-18 E-4 E-5
5:30 - 7:30 p.m.	D-12 D-14 D-16 D-18 E-4 E-5
8:00 - 10:00 P.M.	D-12 D-14 D-16 D-18 E-4 E-5

FINAL EXAMS for Monday only, Tuesday only, Thursday only, Friday only, or Saturday only classes will be given during the final exam week at REGULAR CLASS MEETING TIMES.
Examinations are two hours in length and are scheduled to be taken in classrooms where class meets regularly. All students must take final examinations. If a student misses an examination due to illness or other excused reasons, it is the responsibility of the student to arrange with the instructor to make up the examination that was missed. DO NOT TELEPHONE FOR EXAMINATION RESULTS.
Final grades will not be given over the telephone. Pay attention in class to find out about Final Exam/Final Grade Information. Report cards will be mailed to students approximately two weeks after the end of the exam period.

SCHEDULE OF COURSES

NOTE: PREREQUISITES, COREQUISITES, RECOMMENDED PREPARATION, FEES AND WRITING-INTENSIVE DESIGNATIONS PRECEDE EACH COURSE.
SCHEDULING TIMES ARE PLACED AFTER THE COURSE.
THE ENTIRE LIST OF ARTS AND SCIENCES COURSES ARE REPRINTED. FOR OTHER DEPARTMENTS, ONLY UPDATES ARE NOTED.

Humanities Courses

CLASS CODE	COURSE	CR	TITLE	FROM	TO	DAYS	LOCATION	INSTRUCTOR
AMERICAN STUDIES								
PREREQ: ENG 100, 160, OR ESL 100 WITH A GRADE OF C OR HIGHER								
COMMENT: WRITING-INTENSIVE SECTION								
5500	AMST 202W	3.0	INT AM CIV II-WI	3:00P	4:15	MW	KALI 202	MCCULLOUGH
ART								
REC. PREP: ART 101, 270, OR 280								
5535	ART 290	3.0	ART AFRICA, PACIFIC	1:30P	2:45	MW	KOA103	SOUZA
REC. PREP: CREDIT IN OR QUALIFICATION FOR ENG 22								
COMMENT: SUPPLIES WILL COST APPROXIMATELY \$25.00								
5501	ART 101	3.0	INTRO VISUAL ART	7:30A	8:45	MW	KOA103	MCCORMICK
5502	ART 101	3.0	INTRO VISUAL ART	9:00A	10:15	MW	KOA103	MCCORMICK
5505	ART 101	3.0	INTRO VISUAL ART	3:00P	4:15	MW	KOA103	SOUZA
6526	ART 101	3.0	INTRO VISUAL ART	4:30P	5:45	MW	KOA103	STAFF
7500	ART 101	3.0	INTRO VISUAL ART	6:00P	7:15	MW	KOA103	STAFF
6593	ART 101	3.0	INTRO VISUAL ART	7:30A	8:45	TTh	KOA103	SUENAGA
5508	ART 101	3.0	INTRO VISUAL ART	1:30P	2:45	TTh	KOA103	STAFF
7501	ART 101	3.0	INTRO VISUAL ART	4:30P	5:45	TTh	KOA103	STAFF
7582	ART 101	3.0	INTRO VISUAL ART	6:00P	7:15	TTh	KOA103	STAFF
5504	ART 101	3.0	INTRO VISUAL ART	12:00P	1:15	WF	KOA103	DESILVA
6587	ART 101	3.0	INTRO VISUAL ART	7:30P	8:45	TTh	KOA103	SUENAGA
8500	ART 101	3.0	INTRO VISUAL ART	10:30A	1:15	SAT	KOA103	ISLAS
THIS SECTION HAS SEATS RESERVED FOR MALAMA. CONTACT MIKE ANE FOR MORE INFORMATION.								
5503	ART101	3.0	INTRO VISUAL ART	10:30A	11:45	MW	KOA103	SOUZA
PREREQ: ENG 100, 160, OR ESL 100 WITH A GRADE OF C OR HIGHER								
COMMENT: SUPPLIES WILL COST APPROXIMATELY \$25.00 COMMENT: WRITING-INTENSIVE SECTION								
5513	ART 101W	3.0	INTRO VISL ART-WI	3:00P	4:15	TTh	KOA103	MCCORMICK

COMMENT: THIS IS AN ACE CLUSTER SECTION. CONTACT ACE CLUSTER SECTION LEADER FOR MORE INFORMATION.

5511	ART 105	3.0	INTRO CERAMICS	8:00A	9:45	MWF	KOA100	SOUZA
5512	ART105	3.0	INTRO CERAMICS	10:00A	11:45	MWF	KOA100	SOUZA
7503	ART 105	3.0	INTRO CERAMICS	4:30P	7:00	TTh	KOA100	CHUN
6591	ART 106	3.0	INTRO SCULPTURE	1:30P	4:00	MW	KOA100	BROWNE
5514	ART 106	3.0	INTRO SCULPTURE	8:00A	10:30	TTh	KOA100	BROWNE
COMMENT: SUPPLIES WILL COST APPROXIMATELY \$200. NEED OWN 35 MM CAMERA WITH ADJUSTABLE APERTURE AND SHUTTER.								
5515	ART 107	3.0	INTRO PHOTOGRPHY	1:30P	4:00	MW	KOA201	UEMOTO
7502	ART 107	3.0	INTRO PHOTOGRPHY	4:30P	7:00	MW	KOA201	UEMOTO
6586	ART 107	3.0	INTRO PHOTOGRPHY	4:30P	7:00	TTh	KOA201	SUENAGA
5518	ART 111	3.0	INTRO WATERCOLOR	11:00A	1:30	TTh	KOA201	BEHLKE
COMMENT: STUDENT MUST PAY \$150 FEE AT 'ILIMA 105C FOR FIRST NEW MEDIA STUDIO CLASS AND \$75 FOR EACH ADDITIONAL NEW MEDIA STUDIO CLASS. FEE DUE BY 1/18/2000.								
5520	ART 112	3.0	INTRO DIGITAL ART	1:30P	4:00	MW	KALI102	MURAKAMI
5519	ART 112	3.0	INTRO DIGITAL ART	8:00A	10:30	TTh	KALI102	STAFF
6554	ART 112	3.0	INTRO DIGITAL ART	5:00P	7:30	TTh	KALI102	STAFF
5521	ART 113	3.0	INTRO TO DRAWING	8:00A	9:45	MWF	KOA204	SUNABE
5522	ART 113	3.0	INTRO TO DRAWING	1:30P	4:00	MW	KOA204	SUNABE
5523	ART 113	3.0	INTRO TO DRAWING	10:45A	1:15	TTh	KOA204	NAUGHTON
5506	ART 113	3.0	INTRO TO DRAWING	1:30P	4:00	TTh	KOA204	SUNABE
5524	ART 115	3.0	INTRO TO DESIGN	8:00A	9:45	MWF	KOA201	GRIGG
5525	ART 115	3.0	INTRO TO DESIGN	1:30P	4:00	TTh	KOA201	HATHAWAY
COMMENT: SUPPLIES WILL COST APPROXIMATELY \$150								
5526	ART 123	3.0	INTRO PAINTING	1:30P	4:00	MW	KOA203	NAUGHTON
REC. PREP: HAW 101 OR ONE YEAR HIGH SCHOOL HAWAIIAN LANGUAGE; ART 101 OR STUDIO ART COURSE								
5527	ART 189	3.0	HAWAIIAN VISUAL	1:30P	4:00	TTh	KOA100	STAFF
PREREQ: ENG 22 OR QUALIFICATION FOR ENG 100; QUALIFICATION FOR MATH 24; INSTRUCTOR CONSENT								
COREQ: ART 112, ART 202, ART 212, OR ART 222 OR INSTRUCTOR CONSENT								
7506	ART 191	3.0	TOPICS IN NEW MEDIA	5:00P	8:00	W	KALI 102	STAFF
COMMENT: STUDENT MUST PAY \$150 FEE AT 'ILIMA 105C FOR FIRST NEW MEDIA STUDIO CLASS AND \$75 FOR EACH ADDITIONAL NEW MEDIA STUDIO CLASS FOR THE FOLLOWING GROUP OF CLASSES. FEE DUE BY 1/18/2000.								
PREREQ: ENG22 OR QUALIFICATION FOR ENG 100; QUALIFICATION FOR MATH 24; INSTRUCTOR CONSENT								
COREQ: ART 112, ART 202, ART212, OR ART 222 OR INSTRUCTOR CONSENT								
5528	ART 192	3.0	NEW MEDIA TECHNIQUE	1:00p	3:30	WF	OFFCAMP	MCWILLIAMS
PREREQ: ART 112 OR INSTRUCTOR CONSENT								
5529	ART 202	3.0	DIGITAL IMAGING	1:30P	4:00	TTh	KALI102	MURAKAMI
PREREQ: ART 107 OR ART 112 OR INSTRUCTOR CONSENT								
5530	ART 209	3.0	IMAGE IN MOTION	10:00A	11:45	MWF	KALI102	MURAKAMI
PREREQ: ART 112; ART 202 OR INSTRUCTOR CONSENT								
5531	ART 212	3.0	DIGITAL ANIMATION	11:00A	1:30	TTh	KALI102	MCWILLIAMS
PREREQ: ART 113 OR INSTRUCTOR CONSENT								
REC. PREP: ART 101								
5532	ART 213	3.0	INTER DRAWING	8:00A	10:30	TTh	KOA204	NAUGHTON
PREREQ: ART 101, 113 OR INSTRUCTOR CONSENT REC. PREP: ART 213								
6561	ART 214	3.0	LIFE DRAWING	10:00A	12:30	WF	KOA204	SUNABE
PREREQ: ART 123								
5533	ART 223	3.0	INTER PAINTING	1:30P	4:00	TTh	KOA203	NAUGHTON
PREREQ: ART 106								
5540	ART 253	3.0	SCULPT-FIG MODEL	11:00A	1:30	TTh	KOA100	BROWNE
PREREQ: ENG 100, 160, OR ESL 100 WITH A GRADE OF C OR HIGHER. REC. PREP: ART 101 OR HIST 151 (MAY BE CONCURRENT)								
COMMENT: WRITING-INTENSIVE SECTION.								
5534	ART 270W	3.0	INTRO WEST ART-W	12:00P	1:15	TTh	KOA103	MCCORMICK
ASIAN								
Rec. Prep: ENG 100								
6517	ASIAN 100	3.0	ASIAN PERSPECTIVE	10:30A	11:45	TTh	OLON 205	ASSELIN
DANCE								
COMMENT: MAY BE AUDITED ON A SPACE AVAILABLE BASIS.								
5537	DANCE 131	3.0	MOD DANCE 1	3:00P	4:15	MWF	MAILE101	WISNOSKY
5538	DANCE 131	3.0	MOD DANCE I	1:30P	3:15	TTh	MAILE101	WISNOSKY
PREREQ: DANCE 131 OR CONSENT OF INSTRUCTOR								
COMMENT: MAY BE AUDITED ON A SPACE AVAILABLE BASIS.								
6598	DANCE 132	3.0	MOD DANCE II	1:30P	2:45	MWF	MAILE101	WISNOSKY
6575	DANCE 150	3.0	INTRO TO DANCE	12:00P	1:15	TTh	MAILE101	WISNOSKY
6576	DANCE 212	3.0	TRADITIONAL HULA	3:30P	5:15	TTh	MAILE101	HO
DRAMA								
REC. PREP: CREDIT IN OR QUALIFICATION FOR ENG100, 160, OR ESL 100 COMMENT: ATTENDANCE AT PERFORMANCES REQUIRED								
5541	DRAMA 101	3.0	INTRO DRAMA LIT	9:00A	10:15	TTh	KOA103	PEREZ
5542	DRAMA 101	3.0	INTRO DRAMA LIT	10:30A	11:45	TTh	KOA103	PEREZ
5543	DRAMA 221	3.0	BEGIN ACTING I	9:00A	9:50	MWF	MAILE101	PEREZ
PREREQ: DRAMA 221 OR INSTRUCTOR CONSENT.								
5544	DRAMA 222	3.0	BEGIN ACTING II	10:00A	11:45	MW	MAILE101	PEREZ
COMMENT: CONCURRENT ENROLLMENT IN DRAMA 222 IS ENCOURAGED								
5545	DRAMA 240	3.0	STAGECRAFT	5:00P	7:15	MW	MAILE 101	STAFF
EAST ASIAN LANGUAGES								
PREREQ: ENG 100, 160, OR ESL 100 WITH A GRADE OF C OR HIGHER. COMMENT: WRITING-INTENSIVE SECTION								
5568	EALL 272W	3.0	JPNSE LIT MOD-WI	12:00P	1:15	WF	KOA200	KONDO
ENGLISH								
PREREQ: ENG 100, 160, OR ESL 100 WITH A GRADE OF C OR HIGHER. COMMENT: WRITING-INTENSIVE SECTION								
5547	ENG 250W	3.0	AM LIT-WI	10:30A	11:45	TTh	KALI202	HERSHINOW
5548	ENG 250W	3.0	AM LIT-WI	1:30P	2:45	TTh	KALI202	HERSHINOW
5546	ENG 250W	3.0	AM LIT-WI	12:00P	1:15	WF	MAMANE104	HERSHINOW
PREREQ: ENG 100, 160, ESL 100 WITH A GRADE OF C OR HIGHER. COMMENT: WRITING-INTENSIVE SECTION								
5549	ENG 252W	3.0	BRIT LIT-WI	3:00P	4:15	TTh	KALI 202	PRIMAVERA
6564	ENG 252W	3.0	BRIT LIT-WI	4:30P	5:45	TTh	KALI 202	PRIMAVERA
PREREQ: ENG 100, 160, OR ESL 100 WITH A GRADE OF C OR HIGHER. COMMENT: WRITING-INTENSIVE SECTION								
5550	ENG 254W	3.0	WORLD LIT-WI	7:30A	8:45	TTh	KALI202	NAKAMURA
5551	ENG 254W	3.0	WORLD LIT-WI	9:00A	10:15	TTh	KALI202	NAKAMURA
5552	ENG 254W	3.0	WORLD LIT-WI	12:00P	1:15	TTh	KALI202	NAKAMURA

PREREQ: ENG 100, 160, OR ESL 100 WITH A GRADE OF C OR HIGHER. COMMENT: WRITING-INTENSIVE SECTION
 5555 ENG 257F 3.0 WOMEN WRITERS-WI 10:00A 10:50 M W F KALI 202 PRIMAVERA
 5556 ENG 257F 3.0 WOMEN WRITERS-WI 11:00A 11:50 M W F KALI 202 PRIMAVERA
 5557 ENG 257F 3.0 WOMEN WRITERS-WI 1:30P 2:45 M W KALI 202 PRIMAVERA
 PREREQ: ENG 100, 160, OR ESL 100 WITH A GRADE OF C OR HIGHER. COMMENT: WRITING-INTENSIVE SECTION
 5553 ENG 257G 3.0 MYTHS, DRMS, SYM 8:00A 8:50 M W F KALI 202 NAKAMURA
 5554 ENG 257G 3.0 MYTHS, DRMS, SYM 9:00A 9:50 M W F KALI 202 NAKAMURA
 PREREQ: ENG 100, 160, OR ESL 100 WITH A GRADE OF C OR HIGHER. COMMENT: WRITING-INTENSIVE SECTION
 5558 ENG 257M 3.0 ASIAN/PAC LIT-WI 4:30P 5:45 M W KALI202 MCCULLOUGH
 7508 ENG 257M 3.0 ASIAN/PAC LIT-WI 7:30P 8:45 M W KALI202 MCCULLOUGH
 6566 ENG 257M 3.0 ASIAN/PAC LIT-WI 12:00P 1:15 T Th KOA200 KAWAHARADA
 8503 E VG 257M 3.0 ASIAN/PAC LIT-WI 1:30P 4:15 SAT KALI202 MCCULLOUGH

*** EUROPEAN LANGUAGES ***

PREREQ: ENG 100, ENG 160 OR ESL 100 WITH A GRADE OF C OR HIGHER. COMMENT: WRITING-INTENSIVE SECTION
 6538 EL20WI 3.0 SPAN LIT IN TRANSLA 1:30P 2:45 M W KOA200 BERESIWSKY

*** HAWAIIAN STUDIES ***

REC. PREP: ENG 100, 160 OR ESL 100

5559 HAWST 107 3.0 HAWAI'I/PACIFIC 8:00A 8:50 M W F KOA200 STAFF
 5560 HAWST 107 3.0 HAWAI'I/PACIFIC 9:00A 9:50 M W F KOA200 STAFF
 6537 HAWST 107 3.0 HAWAI'I/PACIFIC 11:00A 11:50 M W F KOA200 STAFF
 5562 HAWST 107 3.0 HAKAI'I/PACIFIC 3:00P 4:15 M W KOA200 STAFF
 5563 HAWST 107 3.0 HAWAI'I/PACIFIC 4:30P 5:45 M W KOA200 STAFF
 5567 HAWST 107 3.0 HAWAI'I/PACIFIC 4:30P 5:45 T Th KOA200 MENDONCA
 7509 HAWST 107 3.0 HAWAI'I/PACIFIC 6:00P 7:15 T Th KOA200 MENDONCA
 5564 HAWST 107 3.0 HAWAI'I/PACIFIC 7:30P 8:45 T Th KOA200 STAFF
 8501 HAWST 107 3.0 HAWAI'I/PACIFIC 10:30A 1:15 SAT KOA200 STAFF
 6584 HAWST 107 3.0 HAWAI'I/PACIFIC 6:00P 7:15 M W KOA200 STAFF
 6585 HAWST 107 3.0 HAWAI'I/PACIFIC 9:00A 10:15 T Th KOA200 MENDONCA

PREREQ: ENG 100, ENG 160 OR ESL 100 WITH A GRADE OF C OR HIGHER. COMMENT: WRITING-INTENSIVE SECTION

REC. PREP: HAWST 107 OR HAW 101

5569 HAWST 261W 3.0 HAWAIIAN LIT - W 1:30P 2:45 T Th KOA200 KAWAHARADA

*** MUSIC ***

PREREQ: AUDITION AND CC NSENT OF INSTRUCTOR

REC. PREP: 1-2 YEARS EXPERIENCE PLAYING PREFERRED INSTRUMENT.

7533 MUS104 2.0 STAGE BAND 4:30P 5:45 T Th OLON 109 DOO

*** HISTORY ***

REC. PREP: CREDIT IN OR QUALIFICATION FOR ENG 100, 160 OR ESL 100

5570 HIST151 3.0 WORLD CIV I 7:30A 8:45 M W KALI203 PANG
 6558 HIST151 3.0 WORLD CIV I 7:30A 8:45 M W KOA102 KRISHNA
 5571 HIST151 3.0 WORLD CIV I 9:00A 10:15 M W KALI203 PANG
 5572 HIST151 3.0 WORLD CIV I 9:00A 10:15 M W KOA102 KRISHNA
 7525 HIST151 3.0 WORLD CIV I 6:00P 7:15 M W KALI203 STAFF
 7527 HIST151 3.0 WORLD CIV I 7:30P 8:45 M W KALI203 STAFF
 5574 HIST151 3.0 WORLD CIV I 7:30A 8:45 T Th KOA102 COLE
 6580 HIST 151 3.0 WORLD CIV I 10:30A 11:45 M W KOA 102 KRISHNA
 5576 HIST 151 3.0 WORLD CIV I 9:00A 10:15 T Th KOA102 KLOBE
 5577 HIST151 3.0 WORLD CIV I 10:30A 11:45 T Th KOA102 KLOBE
 5580 HIST151 3.0 WORLD CIV I 1:30P 2:45 T Th KOA102 KLOBE
 5581 HIST151 3.0 WORLD CIV I 3:00P 4:15 T Th KOA102 COLE
 5582 HIST151 3.0 WORLD CIV I 4:30P 5:45 T Th KALI203 ASSELIN
 7528 HIST151 3.0 WORLD CIV I 6:00P 7:15 T Th KALI203 ASSELIN
 5573 HIST151 3.0 WORLD CIV I 12:00P 1:15 T Th KALI203 KRISHNA
 5579 HIST151 3.0 WORLD CIV I 12:00P 1:15 T Th KOA102 COLE
 5587 HIST151 3.0 WORLD CIV I 12:00P 1:15 W F KOA102 ASSELIN
 8513 HIST151 3.0 WORLD CIV I 10:30A 1:15 SAT KALI203 STAFF

REC. PREP: CREDIT IN OR QUALIFICATION FOR ENG 100, 160

COMMENT: THIS SECTION HAS SEATS RESERVED FOR MALAMA. CONTACT MIKE ANE FOR INFORMATION ABOUT THE MALAMA SERIES OF CLASSES.

5578 HIST 151 3.0 WORLD CIV I 10:30A 11:45 T Th KOA200 MENDONCA

REC. PREP: CREDIT IN OR QUALIFICATION FOR ENG 100, 160 OR ESL 100

5583 HIST152 3.0 WORLD CIV II 10:30A 11:45 M W KALI203 KLOBE
 5584 HIST152 3.0 WORLD CIV II 1:30P 2:45 M W KOA102 KLOBE
 5585 HIST152 3.0 WORLD CIV II 3:00P 4:15 M W KALI203 HIGGINS
 5586 HIST152 3.0 WORLD CIV II 4:30P 5:45 M W KOA102 CASSITY
 7529 HIST152 3.0 WORLD CIV II 6:00P 7:15 M W KOA102 STAFF
 7530 HIST152 3.0 WORLD CIV II 7:30P 8:45 M W KOA102 STAFF
 5590 HIST152 3.0 WORLD CIV II 1:30P 2:45 T Th KALI203 HIGGINS
 5591 HIST152 3.0 WORLD CIV II 3:00P 4:15 T Th KALI203 HIGGINS
 5592 HIST152 3.0 WORLD CIV II 4:30P 5:45 T Th KOA102 CASSITY
 6568 HIST152 3.0 WORLD CIV II 12:00P 1:15 W F KALI203 CASSITY
 5589 HIST152 3.0 WORLD CIV II 9:00A 11:55 F KOA102 ASSELIN
 8514 HIST152 3.0 WORLD CIV II 10:30A 1:15 SAT KOA102 STAFF

PREREQ: ENG 100, ENG 160, OR ESL 100 WITH A GRADE OF C OR HIGHER. REC. PREP: HIST 152.

COMMENT: WRITING-INTENSIVE SECTION

5598 HIST 232WI 3.0 MOD EUROPE CIV I 10:30A 11:45 T Th KALI 203 KRISHNA

PREREQ: ENG 100, ENG 160, OR ESL 100 WITH A GRADE OF C OR HIGHER. COMMENT: WRITING-INTENSIVE SECTION

5593 HIST 242WI 3.0 CIV ASIA II-WI 1:30P 2:45 M W KALI 203 PANG

5594 HIST 242WI 3.0 CIV ASIA II-WI 9:00A 10:15 T Th KALI 203 PANG

PREREQ: ENG 100, ENG 160, OR ESL 100 WITH A GRADE OF C OR HIGHER. COMMENT: WRITING-INTENSIVE SECTION

5595 HIST 282WI 3.0 INT AM HIS II-WI 3:00P 4:15 M W KOA102 CASSITY

7532 HIST 282WI 3.0 INT AM HIS II-WI 6:00P 7:15 T Th KOA102 CASSITY

PREREQ: ENG 100, 160, OR ESL 100 WITH A GRADE OF C OR HIGHER. REC. PREP: HIST 151, 152.

COMMENT: WRITING-INTENSIVE SECTION

5596 HIST 284WI 3.0 HAWAIIAN HISTORY 4:30P 5:45 M W KALI 203 HIGGINS

5597 HIST 284WI 3.0 HAWAIIAN HISTORY 9:00A 11:55 F KALI 203 HIGGINS

*** PACIFIC ***

REC. PREP: ENG 100, 160, OR ESL 100

6596 PACS 100 3.0 INTRO TO PACIFIC 9:00A 10:15 M W OHIA 118 COLE

5997 PACS 100 3.0 INTRO TO PACIFIC 9:00A 10:15 M W OHIA 118 TURNER

*** MUSIC ***

6503 MUS106 3.0 MUS APPRECIATION 10:00A 10:50 M W F KOA200 DOO

6504 MUS106 3.0 MUS APPRECIATION 3:00P 4:15 T Th KOA200 DOO

6506 MUS114 2.0 COLLEGE CHORUS 11:00A 11:50 M W F OLON109 DOO

PREREQ: ABILITY TO CARRY A TUNE ON PITCH. COMMENT: CANNOT BE AUDITED

6507 MUS121B 2.0 VOICE I 12:00P 1:15 W F OLON 109 DOO

6508 MUS121C 2.0 PIANO I 9:00A 9:50 M W F OLON109 CRAIG

6509 MUS121C 2.0 PIANO I 10:00A 10:50 M W F OLON109 CRAIG

6510 MUS121C 2.0 PIANO I 1:30P 2:45 M W OLON109 AKAKA

6511 MUS121C 2.0 PIANO I 1:30P 2:45 T Th OLON109 CRAIG

6512 MUS121C 2.0 PIANO I 3:00P 4:15 T Th OLON109 CRAIG

COMMENT: NEED OWN GUITAR.

6525 MUS 121D 2.0 GUITAR I 9:00A 10:15 T Th MAILE 101 AKAKA

6513 MUS 121D 2.0 GUITAR I 12:00P 1:15 W F MAILE 101 AKAKA

6592 MUS 121D 2.0 GUITAR I 8:00A 8:50 M W F MAILE 101 AKAKA

PREREQ: MUS 121B
 6514 MUS 122B 2.0 VOICE II 9:00A 10:15 T Th OLON 109 DOO

PREREQ: MUS 121C OR CONSENT OF INSTRUCTOR.
 6515 MUS122C 2.0 PIANO II 8:00A 8:50 M W F OLON 109 CRAIG

PREREQ: MUS 121D OR CONSENT OF INSTRUCTOR.
 6516 MUS122D 2.0 GUITAR II 10:30A 11:45 T Th MAIL 101 AKAKA

PREREQ: MUS 121C OR CONSENT OF INSTRUCTOR.
 6520 MUS221C 2.0 PIANO 3 10:30A 11:45 T Th OLON 109 CRAIG

PREREQ: MUS 121D OR CONSENT OF INSTRUCTOR.
 6521 MUS 221D 2.0 GUITAR III 10:30A 11:45 T Th MAIL 101 AKAKA

PREREQ: MUS 121C OR CONSENT OF INSTRUCTOR.
 6522 MUS 222C 2.0 PIANO 4 10:30A 11:45 T Th OLON 109 CRAIG

COMMENT: THE FOLLOWING ARE SPECIAL COURSES OFFERED BY THE OFFICE OF CONTINUING EDUCATION AND TRAINING, 'ILIMA 101; REGISTER BY FIRST DAY OF INSTRUCTION; \$165 PER CREDIT IN ADDITION TO KCC TUITION/FEES; REGISTER BY 1/18/00. CANNOT BE AUDITED, CANNOT BE TAKEN CR/NC.

MEETING TIMES ARRANGED BETWEEN STUDENT AND INSTRUCTOR ON AN INDIVIDUAL BASIS.

PREREQ: MUS 121B OR AUDITION AND INSTRUCTOR CONSENT.

6527 MUS 231B 1.0 VOICE LESSONS ARR OLON 109 DOO

PREREQ: MUS 222C OR 2 YEARS PIANO EXP, AUDITION AND CONSENT OF INSTRUCTOR.
 REC. PREP: 2 YEARS OF PREVIOUS PIANO STUDY.

6528 MUS 231C 1.0 PIANO LESSONS ARR OLON 111 CRAIG

6540 MUS 231C 1.0 PIANO LESSONS ARR OLAP 222 AKAKA

PREREQ: MUS 122D, AUDITION AND CONSENT OF INSTRUCTOR.
 6534 MUS 231G 1.0 GUITAR LESSONS ARR OLON 109 AKAKA

REC. PREP: 2-3 YRS PRIVATE INSTRUCTION AND BAND EXPERIENCE

6523 MUS 231M 1.0 FLUTE LESSONS ARR OLON 109 CRAIG

COMMENT: MUSIC THEORY FOR EDUCATION MAJORS ONLY

6535 MUS 253 3.0 BASIC MUS EXPER 12:00P 1:15 T Th OLON 109 AKAKA

*** PHILOSOPHY ***

REC. PREP: CREDIT IN OR QUALIFICATION FOR ENG 100, 160, OR ESL 100

6531 PHIL 100 3.0 INTRO TO PHIL 9:00A 10:15 T Th KALI201 FUJIKAWA

6532 PHIL 100 3.0 INTRO TO PHIL 10:30A 11:45 T Th KALI201 FUJIKAWA

6530 PHIL 100 3.0 INTRO TO PHIL 12:00P 1:15 T Th KALI201 FUJIKAWA

7534 PHIL 100 3.0 INTRO TO PHIL 4:30P 5:45 T Th KALI201 WALL

6529 PHIL 100 3.0 INTRO TO PHIL 12:00P 1:15 W F KALI201 FUJIKAWA

REC. PREP: QUALIFY FOR OR CREDIT IN ENG 100, 160, OR ESL 100

7535 PHIL101 3.0 PHIL: MORALS & SOCIE 7:30A 8:45 T Th KALIA 201 ROWE

6533 PHIL 101 3.0 PHIL: MORALS & SOCIE 3:00P 4:15 T Th OLON 115 ROWE

REC. PREP: CREDIT IN OR QUALIFICATION FOR ENG 100, 160, OR ESL 100

6544 PHIL102 3.0 ASIAN PHIL 1:30P 2:45 M W KALI 201 FUJIKAWA

PREREQ: QUALIFICATION FOR MATH 27 REC. PREP: QUALIFICATION FOR ENG 100, 160, OR ESL 100

5510 PHIL 110 3.0 INTRO TO LOGIC 3:00P 4:15 M W OLON 201 ROWE

*** RELIGION ***

6545 REL150 3.0 INTRO WORLD REL 7:30A 8:45 M W KALI201 WALL

6546 REL150 3.0 INTRO WORLD REL 9:00A 10:45 M W KALI201 WALL

6548 REL150 3.0 INTRO WORLD REL 3:00P 4:15 M W KALI201 DENTON

7536 REL150 3.0 INTRO WORLD REL 4:30P 5:45 M W KALI201 DENTON

7537 REL150 3.0 INTRO WORLD REL 6:00P 7:15 M W KALI201 DENTON

7538 REL150 3.0 INTRO WORLD REL 7:30P 8:45 M W KALI201 STAFF

6550 REL150 3.0 INTRO WORLD REL 4:30P 5:45 T Th OLAP212 DENTON

6599 REL150 3.0 INTRO WORLD REL 6:00P 7:15 T Th KALI201 DENTON

7555 REL150 3.0 INTRO WORLD REL 7:30P 8:45 T Th KALIA201 STAFF

6549 REL150 3.0 INTRO WORLD REL 1:30P 2:45 T Th KALI201 WALL

6541 REL150 3.0 INTRO WORLD REL 12:00P 1:15 W F KALI202 STAFF

8518 REL150 3.0 INTRO WORLD REL 10:30A 1:15 SAT KALI 201 STAFF

6536 REL151 3.0 REL MEAN EXIST 3:00P 4:15 T Th KALI 201 WALL

MATH/SCIENCES

*** BIOLOGY ***

PREREQ: ZOO 141; 141L; CREDIT OR CONCURRENT ZOO 142; 142L

6773 BIOL 297 0.0 APPLIED MUS/SKEL 1:30P 2:45 T Th OLAP 215 HALL

*** ASTRONOMY ***

PREREQ: MATH 25 REC. PREP: PHYS 100, 122 OR HIGH SCHOOL PHYSICS

6701 ASTRO 110 3.0 SURVEY OF ASTRON 1:30P 2:45 M W ILIA 204 RAND

6702 ASTRO 110 3.0 SURVEY OF ASTRON 10:30A 11:45 T Th ILIA204 HUDSON

6703 ASTRO 110 3.0 SURVEY OF ASTRON 10:30A 11:45 T Th OLAP214 STAFF

*** BIOCHEMISTRY ***

PREREQ: MATH 25 OR EQUIVALENT REC. PREP: HIGH SCHOOL SCIENCE

6704 BIOCH 241 3.0 FUND OF BIOCHEMI 9:00A 9:50 M W F KOKI109 DAVIS

PREREQ: BIOCH 241, CHEM 151, OR CHEM 161

6705 BIOCH 244 3.0 BIOCHEMISTRY 11:30A 12:20 M W F KOKI107 DAVIS

*** BIOLOGY ***

REC. PREP: CHEM 101 OR HIGHER

6706 BIOL101 3.0 INTRO BIOL SCI 9:00A 9:50 M W F KOKI101 QUENSELL

6707 BIOL101 3.0 INTRO BIOL SCI 1:30P 2:45 M W ILIA106 STAFF

6708 BIOL101 3.0 INTRO BIOL SCI 9:00A 10:15 T Th ILIA204 SNIDER

6709 BIOL101 3.0 INTRO BIOL SCI 1:30P 2:45 T Th ILIA104 STAFF

7701 BIOL101 3.0 INTRO BIOL SCI 6:00P 7:15 T Th ILIA106 STAFF

8701 BIOL101 3.0 INTRO BIOL SCI 9:00A 11:45 SAT KOKI101 MATSUDA

PREREQ: CREDIT OR CONCURRENT IN BIOL 101 REC. PREP: CHEM 101 OR HIGHER

6711 BIOL101L 1.0 INTRO BIOL LAB 3:00P 6:15 M KOKI101 STAFF

6710 BIOL101L 1.0 INTRO BIOL LAB 12:30P 3:15 M KOKI101 SNIDER

6712 BIOL101L 1.0 INTRO BIOL LAB 3:00P 5:45 T KOKI101 STAFF

7702 BIOL101L 1.0 INTRO BIOL LAB 5:30P 8:15 W KOKI101 STAFF

6713 BIOL101L 1.0 INTRO BIOL LAB 3:00P 5:45 Th KOKI101 STAFF

REC. PREP: CHEM 100 OR HIGHER OR BIOCHEM & COLL BIOL OR ZOO

7703 BIOL130 4.0 ANAT & PHYS 6:00P 7:45 M W ILIA107 DANIELS

6714 BIOL130 4.0 ANAT & PHYS 9:00A 9:50 M F ILIA204 DANIELS

9:00A 10:50 W ILIA204 DANIELS

6715 BIOL130 4.0 ANAT & PHYS 1:00P 2:45 M F ILIA107 DANIELS

6716 BIOL130 4.0 ANAT & PHYS 9:00A 10:45 T Th OLAP 113 MATSUDA

6795K BIOL130 4.0 ANAT & PHYS INTERNET SNIDER

PREREQ: CREDIT OR CONCURRENT IN BIOL 130

6717 BIOL130L 1.0 ANATOMY LAB 11:00A 1:45 T KOKI208 DANIELS

6718 BIOL130L 1.0 ANATOMY LAB 11:00A 1:45 W KOKI208 DANIELS

6719	BIOL130L	1.0	ANATOMY LAB	11:00A	1:45	Th	KOKI208	MATSUDA	PREREQ: A GRADE OF "C" OR HIGHER IN MATH 25, OR A GRADE OF "C" OR HIGHER IN MATH 81, OR QUALIFICATION FOR MATH 100 OR HIGHER LEVEL MATH; QUALIFICATION FOR ENG 22 OR ESL 94
	REC. PREP: CHEM 101, 151, 161, OR BIOCH 241								COMMENT: YOU MUST PURCHASE A TEXAS INSTRUMENTS TI-83 GRAPHING CALCULATOR FOR MATH 115 CLASS. APPROXIMATE COST IS \$100.00
6720	BIOL171	3.0	GEN BIOLOGY I	8:00A	8:50	MWF	KOKI101	SNIDER	
	PREREQ: BIOL171 (OR CONCURRENT)								
6721	BIOL171L	1.0	GENERAL BIOL I L	11:30A	2:15	F	KOKI101	SNIDER	
	PREREQ: BIOL 171								
6722	BIOL 172	3.0	GEN BIOLOGY II	10:00A	10:50	MWF	KOKI 101	SNIDER	PREREQ: A GRADE OF "C" OR HIGHER IN MATH 27, OR A GRADE OF "C" OR HIGHER IN MATH 103, OR QUALIFICATION FOR MATH 135
	PREREQ: CREDIT OR CONCURRENT IN BIOL 172								COMMENT: YOU MUST BUY A SCIENTIFIC CALCULATOR FOR THIS CLASS
6723	BIOL 172L	2.0	GEN BIOL LAB II	12:00P	2:45	Th	KOKI 101	SNIDER	
	*** BOTANY ***								
6724	BOT105	3.0	ETHNOBOTANY	11:00A	12:15	MW	KOKI101	QUENSELL	
6725	BOT130	3.0	PLANTS IN HAWAII	9:00A	10:15	TTh	KOKI101	QUENSELL	
6726	BOT130	3.0	PLANTS IN HAWAII	10:30A	11:45	TTh	KOKI101	QUENSELL	
	PREREQ: CREDIT OR CONCURRENT IN BOT 130								
6727	BOT130L	1.0	PLANTS IN HI LAB	12:00P	2:45	T	KOKI101	QUENSELL	
6728	BOT130L	1.0	PLANTS IN HI LAB	12:30P	3:15	W	KOKI101	QUENSELL	
	CHEMISTRY								
	COMMENT: CHEM 100 IS NOT DESIGNED FOR THE A.S. NURSING PROGRAM								
6729	CHEM 100	3.0	CHEM + MAN	8:00A	8:50	MWF	KOKI107	GALLO	
6730	CHEM 100	3.0	CHEM + MAN	9:00A	9:50	MWF	KOKI107	GALLO	
6731	CHEM 100	3.0	CHEM + MAN	1:30P	2:45	MW	ILIA105	TOMOSADA	
6732	CHEM 100	3.0	CHEM + MAN	7:30A	8:45	TTh	KOKI107	GALLO	
6733	CHEM 100	3.0	CHEM + MAN	9:00A	10:15	TTh	KOKI109	TOMOSADA	
6734	CHEM 100	3.0	CHEM + MAN	3:00P	4:15	TTh	ILIA204	TOMOSADA	
	PREREQ: MATH 24								
	COMMENT: 101 IS NOT ARTICULATED AS A GENERAL ED. CORE COURSE								
7704	CHEM 101	3.0	GENL.ORG&BIOCHEM	4:30P	5:45	TTh	ILIA 204	TOMOSADA	
	PREREQ: MATH 25 OR 2 YEARS HIGH SCHOOL ALGEBRA REC. PREP: MATH 135								
6735	CHEM 161	3.0	GENERAL CHEM I	8:00A	8:50	MWF	KOKI109	VOYCE	
6737	CHEM 161	3.0	GENERAL CHEM I	10:00A	10:50	MWF	KOKI109	VOYCE	
6736	CHEM 161	3.0	GENERAL CHEM I	11:00A	11:50	MWF	KOKI109	VOYCE	
7705	CHEM 161	3.0	GENERAL CHEM I	4:30P	5:45	MW	ILIA106	PANDYA	
6738	CHEM 161	3.0	GENERAL CHEM I	9:00A	10:15	TTh	KOKI107	GALLO	
6739	CHEM 161	3.0	GENERAL CHEM I	12:00P	1:15	TTh	ILIA104	PANDYA	
	PREREQ: MATH 25, CREDIT OR CONCURRENT IN CHEM 161								
6740	CHEM 161L	1.0	GEN CHEM I LAB	12:30P	3:15	M	KOKI107	DAVIS	
6741	CHEM 161L	1.0	GEN CHEM I LAB	11:00A	1:45	T	KOKI107	GALLO	
6742	CHEM 161L	1.0	GEN CHEM I LAB	2:00P	4:45	T	KOKI107	PANDYA	
6745	CHEM 161L	1.0	GEN CHEM I LAB	12:30P	3:15	W	KOKI107	DAVIS	
6743	CHEM 161L	1.0	GEN CHEM I LAB	11:00A	1:45	Th	KOKI107	GALLO	
6744	CHEM 161L	1.0	GEN CHEM I LAB	2:00P	4:45	Th	KOKI107	PANDYA	
	PREREQ: CHEM 161; MATH 27 OR MATH 103 OR 2 YEARS IN HIGH SCHOOL ALGEBRA								
	COMMENT: MATH 135 STRONGLY RECOMMENDED								
7706	CHEM 162	3.0	GENERAL CHEM II	6:00P	7:15	MW	ILIA 106	PANDYA	
6746	CHEM 162	3.0	GENERAL CHEM II	10:30A	11:45	TTh	KOKI 109	PANDYA	
	PREREQ: CHEM 161L, MATH 25, CREDIT OR CONCURRENT IN CHEM 162								
6747	CHEM 162L	1.0	GEN CHEM II LAB	12:30P	3:15	M	KOKI109	VOYCE	
6748	CHEM 162L	1.0	GEN CHEM II LAB	12:30P	3:15	W	KOKI109	VOYCE	
	PREREQ: CHEM 272								
6749	CHEM 273	3.0	ORGANIC CHEM	10:00A	10:50	MWF	KOKI 107	DAVIS	
	PREREQ: CHEM 272L								
6750	CHEM 273L	1.0	ORGANIC CHEM LAB	12:30P	3:15	F	KOKI109	DAVIS	
	ELECTRICAL ENGINEERING								
	PREREQ: CREDIT OR CONCURRENT ENROLLMENT IN MATH 231 AND PHYSICS 272								
6751	EE 211	4.0	BASIC CIRCUIT ANALYS	10:30A	11:45	TTh	KOKI209	RAND	
				12:00P	2:45	T	KOKI209	RAND	
	GEOLOGY/GEOPHYSICS								
	REC. PREP: QUALIFICATION FOR ENG 100								
6752	GG103	3.0	GEOLOGY HI ISLES	11:00A	11:50	MWF	KOKI 209	STAFF	
	MATHEMATICS								
	PREREQ: A GRADE OF A IN MATH 24, OR A GRADE OF C OR HIGHER IN MATH 25, OR A GRADE OF C OR HIGHER IN MATH 81, OR QUALIFICATION FOR MATH 100 OR HIGHER LEVEL MATH; QUALIFICATION FOR ENG, 22 OR ESOL 94.								
	COMMENT: YOU MUST BUY A SCIENTIFIC CALCULATOR FOR THIS CLASS								
5737	MATH 100	3.0	SURVEY OF MATH	8:00A	8:50	MWF	OLAP214	CHUNG	
5738	MATH 100	3.0	SURVEY OF MATH	10:00A	10:50	MWF	ILIA104	PAK	
5739	MATH 100	3.0	SURVEY OF MATH	1:30P	2:45	MW	OLON209	ASTROMOFF	
7709	MATH 100	3.0	SURVEY OF MATH	6:00P	7:15	MW	ILIA103	METZ	
5740	MATH 100	3.0	SURVEY OF MATH	9:00A	10:15	TTh	OLAP214	CHUNG	
8703	MATH 100	3.0	SURVEY OF MATH	7:30A	10:15	SAT	OLAP214	CHUNG	
	PREREQ: QUALIFICATION FOR MATH 100 OR HIGHER LEVEL MATH, OR A GRADE OF C OR HIGHER IN MATH 25, OR A GRADE OF C OR HIGHER IN MATH 81; QUALIFICATION FOR ENG 22 OR ESL 94								
	COMMENT: HEALTH SCIENCE MAJORS ONLY								
	COMMENT: YOU MUST BUY A SCIENTIFIC CALCULATOR FOR THIS CLASS								
7710	MATH 100H	3.0	MATH FOR HEALTH	5:00P	6:45	TTh	ILIA 103	ALLIS	
5741	MATH 100H	3.0	MATH FOR HEALTH	12:30P	2:15	TTh	ILIA 103	ALLIS	
	PREREQ: MATH 25 WITH A GRADE OF C OR HIGHER, OR A PLACEMENT TEST RECOMMENDATION OF MATH 103.								
5743	MATH103	3.0	FUND OF COL ALGE	9:00A	9:50	MWF	OLAP214	CHUNG	
5744	MATH103	3.0	FUND OF COL ALGE	10:00A	10:50	MWF	OLAP214	MOWBRAY	
5745	MATH103	3.0	FUND OF COL ALGE	11:00A	11:50	MWF	OLAP214	MOWBRAY	
5746	MATH103	3.0	FUND OF COL ALGE	1:30P	2:45	MW	ILIA104	ALLIS	
5747	MATH103	3.0	FUND OF COL ALGE	3:00P	4:15	MW	ILIA104	ALLIS	
7711	MATH103	3.0	FUND OF COL ALGE	6:00P	7:15	MW	ILIA104	ALLIS	
5748	MATH103	3.0	FUND OF COL ALGE	7:30A	8:45	TTh	OLAP214	CHUNG	
5749	MATH103	3.0	FUND OF COL ALGE	10:30A	11:45	TTh	OLAP213	PIZARRO	
5750	MATH103	3.0	FUND OF COL ALGE	1:30P	2:45	TTh	OLAP213	PIZARRO	
5751	MATH103	3.0	FUND OF COL ALGE	3:00P	4:15	TTh	OLAP213	PIZARRO	
	PREREQ: MATH 25 WITH A GRADE OF C OR HIGHER, OR A PLACEMENT TEST RECOMMENDATION OF MATH 103.								
	COMMENT: THIS IS AN ACCELERATED COURSE TAKEN WITH MATH 135. STUDENT MUST ENROLL IN THE ACCELERATED PAIR OF COURSES.								
57421	MATH 103	3.0	FUND OF COL ALGE	9:00A	9:50	MWF	ILIA 104	PAK	
				9:00A	10:15	TTh	ILIA 104	PAK	
	Special dates for class code 57421: 01-10-00 to 03-03-00								
	PREREQ: A GRADE OF "C" OR HIGHER IN MATH 27, OR A GRADE OF "C" OR HIGHER IN MATH 103, OR QUALIFICATION FOR MATH 135								
	COMMENT: THIS COURSE IS PART OF AN ACCELERATED MATH 103/135 OPTION. STUDENT MUST REGISTER CONCURRENTLY IN THE PAIRED MATH 103 SECTION.								
	COMMENT: YOU MUST BUY A SCIENTIFIC CALCULATOR FOR THIS CLASS								
57422	MATH 135	3.0	ELEM FUNCTIONS	9:00A	9:50	MWF	ILIA104	PAK	
				9:00A	10:15	TTh	ILIA 104	PAK	
	Special dates for class code 57422: 03-06-00 to 05-03-00								
5752	MATH 115	3.0	STATISTICS	9:00A	10:15	MW	ILIA 107	FLANIGAN	
7723	MATH 115	3.0	STATISTICS	4:30P	5:45	MW	ILIA 107	FLANIGAN	
	PREREQ: A GRADE OF "C" OR HIGHER IN MATH 27, OR A GRADE OF "C" OR HIGHER IN MATH 103, OR QUALIFICATION FOR MATH 135								
	COMMENT: YOU MUST BUY A SCIENTIFIC CALCULATOR FOR THIS CLASS								
5754	MATH135	3.0	ELEM FUNCTIONS	1:30P	2:45	MW	OLAP214	MOWBRAY	
5755	MATH135	3.0	ELEM FUNCTIONS	3:00P	4:15	MW	OLAP214	MOWBRAY	
5756	MATH135	3.0	ELEM FUNCTIONS	10:30A	11:45	TTh	ILIA104	PAK	
5757	MATH135	3.0	ELEM FUNCTIONS	1:30P	2:45	TTh	OLAP214	ASTROMOFF	
7712	MATH135	3.0	ELEM FUNCTIONS	6:00P	7:15	TTh	OLAP213	ASTROMOFF	
5758	MATH135	3.0	ELEM FUNCTIONS	11:00A	12:15	WF	ILIA104	PAK	
	PREREQ: A GRADE OF "C" OR HIGHER IN MATH 135 OR PLACEMENT TEST QUALIFICATION FOR MATH 140								
	COMMENT: YOU MUST BUY A SCIENTIFIC CALCULATOR FOR THIS CLASS								
5760	MATH 140	3.0	TRIG + ANAL GEOM	11:00A	11:50	MWF	OLAP213	YODER	
5759	MATH 140	3.0	TRIG + ANAL GEOM	7:30A	8:45	MW	ILIA107	FLANIGAN	
7713	MATH 140	3.0	TRIG + ANAL GEOM	4:30P	5:45	MW	OLAP215	STAFF	
5761	MATH 140	3.0	TRIG + ANAL GEOM	12:00P	1:15	TTh	KOA102	FLANIGAN	
	PREREQ: A GRADE OF C OR HIGHER IN MATH 140 OR PLACEMENT TEST QUALIFICATION FOR MATH 205								
	COMMENT: YOU MUST BUY A SCIENTIFIC CALCULATOR FOR THIS CLASS								
5762	MATH 205	4.0	CALCULUS I	9:00A	10:50	MW	OLAP213	YODER	
7714	MATH 205	4.0	CALCULUS I	6:00P	7:45	MW	OLAP214	MOWBRAY	
	PREREQ: GRADE OF C OR HIGHER IN MATH 205 OR EQUIVALENT								
	COMMENT: YOU MUST BUY A SCIENTIFIC CALCULATOR FOR THIS CLASS								
5763	MATH 206	4.0	CALCULUS II	1:30P	3:15	MW	OLAP213	YODER	
	PREREQ: A GRADE OF "C" OR HIGHER IN MATH 206								
	COMMENT: YOU MUST BUY A SCIENTIFIC CALCULATOR FOR THIS CLASS								
5764	MATH 231	4.0	CALCULUS III	4:30P	6:15	MW	OLAP213	YODER	
	*** MICROBIOLOGY ***								
	REC. PREP: MATH 25 & CHEM 101 OR HIGHER CHEM OR BIOCHEMISTRY								
6794	MICRO 130	3.0	GEN MICROBIOLOGY	12:00P	1:15	MW	ILIA204	STAFF	
7715	MICRO 130	3.0	GEN MICROBIOLOGY	6:00P	7:15	TTh	ILIA204	STAFF	
6753	MICRO 130	3.0	GEN MICROBIOLOGY	12:00P	1:15	TTh	ILIA204	STAFF	
	PREREQ: CREDIT IN OR CONCURRENT BIOL 130 OR ZOOL 141								
	REC. PREP: CHEM 151 OR CHEM 161								
6758	MICRO 135	3.0	MICRO FOR HEALTH	7:30A	8:45	MW	ILIA204	BERESTECKY	
	PREREQ: CREDIT OR CONCURRENT								

PREREQ: ZOO 141
 COREQ: ZOO 142
 REC PREP: CHEM 101 OR HIGHER LEVEL CHEMISTRY OR BIOCHEMISTRY;
 100 LEVEL OR HIGHER COURSE IN BIOLOGY OR ZOOLOGY

6788	ZOO142	3.0	HUMAN ANAT/PHYS	10:00A	10:50	M W F	OLAP 215	STAFF
7720	ZOO142	3.0	HUMAN ANAT/PHYS	6:00P	7:15	M W	OLAP 215	HALL
6789	ZOO142	3.0	HUMAN ANAT/PHYS	9:00A	10:15	T Th	OLAP 215	DUNN
6790	ZOO142	3.0	HUMAN ANAT/PHYS	10:30A	11:45	T Th	OLAP 215	DUNN

PREREQ: ZOO 141
 COREQ: ZOO 142
 REC. PREP: CHEM 101 OR HIGHER AND COLLEGE LEVEL COURSE IN BIOLOGY OR ZOOLOGY.

6791	ZOO142L	1.0	HUM ANAT/PHYS LA	10:30A	1:15	M	KOKI 208	HALL
6792	ZOO142L	1.0	HUM ANAT/PHYS LA	2:00P	4:45	T	KOKI 208	DUNN
7721	ZOO142L	1.0	HUM ANAT/PHYS LA	5:30P	8:15	T	KOKI 208	DUNN
6793	ZOO142L	1.0	HUM ANAT/PHYS LA	2:00P	4:45	Th	KOKI 208	DUNN
7722	ZOO142L	1.0	HUM ANAT/PHYS LA	5:30P	8:15	Th	KOKI 208	DUNN
8704	ZOO142L	1.0	HUM ANAT/PHYS LA	12:00P	2:45	S	KOKI 208	HALL

SOCIAL SCIENCES

*** ANTHROPOLOGY ***
 PREREQ: QUALIFICATION FOR ENG 100 AND MATH 24

5900	ANTH 150	3.0	HUMAN ADAPTATION	8:00A	8:50	M W F	OLON 115	HASAGER
5901	ANTH 150	3.0	HUMAN ADAPTATION	7:30A	8:45	T Th	OLON 115	HASAGER

PREREQ: QUALIFICATION FOR ENG 100 AND MATH 24

5902	ANTH 200	3.0	CULTURAL ANTHRO	9:00A	9:50	M W F	OLON115	STAFF
7901	ANTH 200	3.0	CULTURAL ANTHRO	6:00P	8:45	M	OLON201	STAFF
5904G	ANTH 200	3.0	CULTURAL ANTHRO	ARR	ARR		INTERNET	HEFNER
5904K	ANTH 200	3.0	CULTURAL ANTHRO	ARR	ARR		INTERNET	HEFNER
5904L	ANTH 200	3.0	CULTURAL ANTHRO	ARR	ARR		INTERNET	HEFNER
5904M	ANTH 200	3.0	CULTURAL ANTHRO	ARR	ARR		INTERNET	HEFNER
5904Q	ANTH 200	3.0	CULTURAL ANTHRO	ARR	ARR		INTERNET	HEFNER
5904W	ANTH 200	3.0	CULTURAL ANTHRO	ARR	ARR		INTERNET	HEFNER
5903	ANTH 200	3.0	CULTURAL ANTHRO	12:00P	1:15	T Th	OLON 115	HEFNER
5906	ANTH 200	3.0	CULTURAL ANTHRO	12:00P	1:15	W F	OLON 115	HASAGER

PREREQ: QUALIFICATION FOR ENG 100 AND MATH 24
 COMMENT: THIS SECTION HAS SOME SEATS RESERVED FOR MALAMA.
 CONTACT MIKE ANE FOR INFORMATION ABOUT THE MALAMA SERIES.
 ALSO, REFER TO THE MALAMA SECTION OF THIS SCHEDULE.

5905	ANTH 200	3.0	CULTURAL ANTHRO	1:30P	2:45	M W	OLON 115	HEFNER
------	----------	-----	-----------------	-------	------	-----	----------	--------

*** ASIAN ***
 REC. PREP: ENG 100

5934	ASIAN 100	3.0	ASIAN PERSPECTIV	10:30A	11:45	T Th	OLON 205	HEFNER
------	-----------	-----	------------------	--------	-------	------	----------	--------

*** ECONOMICS ***
 PREREQ: QUALIFICATION FOR ENG, 100 AND MATH 24

5982	ECON 120	3.0	INTRO TO ECON	9:00A	10:15	T Th	OLON 209	ROSS-PFEIFFER
5981	ECON 120	3.0	INTRO TO ECON	12:00P	1:15	W F	OLON 209	BRIGGS

PREREQ: MATH 25 AND QUALIFICATION FOR ENG 100 COMMENT: STUDENTS ARE REQUIRED TO SPEND ONE HOUR PER WEEK IN ECONOMICS LABORATORY

5983	ECON130	3.0	PRIN ECON/MICRO	8:00A	8:50	M W F	OLON 209	BRIGGS
5984	ECON130	3.0	PRIN ECON/MICRO	10:00A	10:50	M W F	OLON 209	BRIGGS
5988	ECON130	3.0	PRIN ECON/MICRO	11:00A	11:50	M W F	OLON 209	DIK
5990	ECON130	3.0	PRIN ECON/MICRO	7:30A	8:45	T Th	OLON 209	BRIGGS
5986	ECON130	3.0	PRIN ECON/MICRO	10:30A	11:45	T Th	OLON 209	ROSS-PFEIFFER
5987	ECON130	3.0	PRIN ECON/MICRO	1:30P	2:45	T Th	OLON 209	ROSS-PFEIFFER

PREREQ: ECON 130; MATH 25 AND QUALIFICATION FOR ENG 100

5985	ECON 131	3.0	PRIN ECON/MACRO	9:00A	9:50	M W F	OLON 209	DIK
7991	ECON 131	3.0	PRIN ECON/MACRO	8:00P	7:15	M W	OLON 209	WEN
5989	ECON 131	3.0	PRIN ECON/MACRO	12:00P	1:15	T Th	OLON 209	DIK

*** INTERDISCIPLINARY STUDIES ***
 REC. PREP: QUALIFICATION FOR ENG 100; CONSENT OF INSTRUCTOR
 COMMENT: SPECIAL CLASS FOR LIBERAL ARTS A.A. DEGREE AND/OR
 STUDENTS WHO WANT TO TRANSFER TO BACCALAUREATE PROGRAMS.

5999	IS197	1.0	COLLEGE SURVIVAL	9:00A	10:30	T Th	ILIM 202A	STAFF
------	-------	-----	------------------	-------	-------	------	-----------	-------

Special dates for class code 5999: 01-18-2000 to 02-17-2000

*** FAMILY RESOURCES ***
 PREREQ: QUALIFICATION FOR ENG, 100 AND MATH 24

5920	FAMR. 230	3.0	SURVEY GRO +DEV	9:00A	9:50	M W F	OLON 201	HIROHATA
5921	FAMR 230	3.0	SURVEY GRO +DEV	10:00A	10:50	M W F	OLON 201	HIROHATA
5922	FAMR 230	3.0	SURVEY GRO +DEV	1:30P	2:45	M F	OLON 201	HIROHATA
5924	FAMR 230	3.0	SURVEY GRO +DEV	3:00P	4:15	T Th	OLON 201	HIROHATA
5925	FAMR 230	3.0	SURVEY GRO +DEV	4:30P	5:45	T Th	OLON 201	HIROHATA
7921	FAMR 230	3.0	SURVEY GRO +DEV	6:00P	8:45	W	OLON 201	TODOROVICH
8921	FAMR230	3.0	SURVEY GRO +DEV	7:30A	10:15	SAT	OLON 201	TODOROVICH

PREREQ: QUALIFICATION FOR ENG 100 AND MATH 24
 COMMENT: THIS SECTION HAS SEATS RESERVED FOR MALAMA.
 PLEASE REFER TO "SPECIAL COURSES" FOR MORE INFORMATION.

5923	FAMR. 230	3.0	SURVEY GRO + DEV	10:30A	11:45	T Th	OLON 201	OGATA
------	-----------	-----	------------------	--------	-------	------	----------	-------

*** GEOGRAPHY ***
 PREREQ: QUALIFICATION FOR ENG 100 AND MATH 24

5910	GEOG101	3.0	THE NATURAL ENVI	3:00P	4:15	M W	OLON115	HUTTON
5916	GEOG101	3.0	THE NATURAL ENVI	1:30P	2:45	T Th	OLON115	NULLET

PREREQ: QUALIFICATION FOR ENG, 100 AND MATH 24
 COREQ: GEOG 101

5911	GEOG101L	1.0	THE NATURAL ENVI	3:00P	5:55	F	OLON115	HUTTON
------	----------	-----	------------------	-------	------	---	---------	--------

PREREQ: QUALIFICATION FOR ENG 100 AND MATH 24

5912	GEOG102	3.0	WLD REG GEOG	10:00A	10:50	M W F	OLON115	NULLET
5913	GEOG102	3.0	WLD REG GEOG	11:00A	11:50	M W F	OLON115	NULLET
7910	GEOG102	3.0	WLD REG GEOG	6:00P	7:15	M W	OLON115	HUTTON
5915	GEOG102	3.0	WLD REG GEOG	10:30A	11:45	T Th	OLON115	NULLET

PREREQ: ENG 100, 160, OR ESL 100 WITH A GRADE OF C OR HIGHER
 QUALIFICATION OF MATH 24
 COMMENT: WRITING- INTENSIVE SECTION

5914	GEOG 102W	3.0	WLD REG GEOG-WI	9:00A	10:15	T Th	OLON 115	NULLET
------	-----------	-----	-----------------	-------	-------	------	----------	--------

*** POLITICAL SCIENCE ***
 PREREQ: QUALIFICATION FOR ENG 100; QUALIFICATION FOR MATH 24

5931	POLSC 110	3.0	INTRO TO POLS	11:00A	11:50	M W F	OLON 201	POLLARD
5933	POLSC 110	3.0	INTRO TO POLS	3:00P	4:15	T Th	OLON 205	POLLARD

PREREQ: ENG 100, 160, OR ESL 100 WITH A GRADE OF C OR HIGHER;
 QUALIFICATION FOR MATH 24 COMMENT: WRITING- INTENSIVE SECTION.

5932	POLSC 110WI	3.0	INT TO POLSC-WI	1:30P	2:45	M W	OLON 205	POLLARD
------	-------------	-----	-----------------	-------	------	-----	----------	---------

*** PSYCHOLOGY ***
 PREREQ: QUALIFICATION FOR ENG 100 AND MATH 24

5950	PSY100	3.0	SURVEY OF PSY	8:00A	8:50	M W F	OLON208	BECKER
5951	PSY100	3.0	SURVEY OF PSY	9:00A	9:50	M W F	OLON208	COMPTON
5952	PSY100	3.0	SURVEY OF PSY	10:00A	10:50	M W F	OLON 208	BECKE

*** FAMILY RESOURCES ***
 PREREQ: QUALIFICATION FOR ENG, 100 AND MATH 24

5920	FAMR.230	3.0	SURVEY GRO +DEV	9:00A	9:50	M W F	OLON201	HIROHATA
5921	FAMR230	3.0	SURVEY GRO +DEV	10:00A	10:50	M W F	OLON201	HIROHATA
5922	FAMR230	3.0	SURVEY GRO +DEV	1:30P	2:45	M F	OLON201	HIROHATA
5924	FAMR230	3.0	SURVEY GRO +DEV	3:00P	4:15	T Th	OLON201	HIROHATA
5925	FAMR230	3.0	SURVEY GRO +DEV	4:30P	5:45	T Th	OLON201	HIROHATA
7921	FAMR230	3.0	SURVEY GRO +DEV	6:00P	8:45	W	OLON201	TODOROVICH
8921	FAMR230	3.0	SURVEY GRO +DEV	7:30A	10:15	SAT	OLON201	TODOROVICH

PREREQ: QUALIFICATION FOR ENG 100 AND MATH 24
 COMMENT: THIS SECTION HAS SEATS RESERVED FOR MALAMA. PLEASE REFER TO "SPECIAL COURSES" FOR MORE INFORMATION.

5923	FAMR. 230	3.0	SURVEY GRO + DEV	10:30A	11:45	T Th	OLON 201	OGATA
------	-----------	-----	------------------	--------	-------	------	----------	-------

*** GEOGRAPHY ***
 PREREQ: QUALIFICATION FOR ENG 100 AND MATH 24

5910	GEOG101	3.0	THE NATURAL ENVI	3:00P	4:15	M W	OLON115	HUTTON
5916	GEOG101	3.0	THE NATURAL ENVI	1:30P	2:45	T Th	OLON115	NULLET

PREREQ: QUALIFICATION FOR ENG, 100 AND MATH 24
 COREQ: GEOG 101

5911	GEOG101L	1.0	THE NATURAL ENVI	3:00P	5:55	F	OLON115	HUTTON
------	----------	-----	------------------	-------	------	---	---------	--------

PREREQ: QUALIFICATION FOR ENG 100 AND MATH 24

5912	GEOG102	3.0	WLD REG GEOG	10:00A	10:50	M W F	OLON115	NULLET
5913	GEOG102	3.0	WLD REG GEOG	11:00A	11:50	M W F	OLON115	NULLET
7910	GEOG102	3.0	WLD REG GEOG	6:00P	7:15	M W	OLON115	HUTTON
5915	GEOG102	3.0	WLD REG GEOG	10:30A	11:45	T Th	OLON115	NULLET

PREREQ: ENG 100, 160, OR ESL 100 WITH A GRADE OF C OR HIGHER
 QUALIFICATION OF MATH 24
 COMMENT: WRITING- INTENSIVE SECTION

5914	GEOG 102W	3.0	WLD REG GEOG-WI	9:00A	10:15	T Th	OLON 115	NULLET
------	-----------	-----	-----------------	-------	-------	------	----------	--------

*** POLITICAL SCIENCE ***
 PREREQ: QUALIFICATION FOR ENG 100; QUALIFICATION FOR MATH 24

5931	POLSC 110	3.0	INTRO TO POLS	11:00A	11:50	M W F	OLON 201	POLLARD
5933	POLSC 110	3.0	INTRO TO POLS	3:00P	4:15	T Th	OLON 205	POLLARD

PREREQ: ENG 100, 160, OR ESL 100 WITH A GRADE OF C OR HIGHER;
 QUALIFICATION FOR MATH 24
 COMMENT: WRITING- INTENSIVE SECTION.

5932	POLSC 110WI	3.0	INT TO POLSC-WI	1:30P	2:45	M W	OLON 205	POLLARD
------	-------------	-----	-----------------	-------	------	-----	----------	---------

*** PSYCHOLOGY ***
 PREREQ: QUALIFICATION FOR ENG 100 AND MATH 24

5950	PSY100	3.0	SURVEY OF PSY	8:00A	8:50	M W F	OLON208	BECKER
5951	PSY100	3.0	SURVEY OF PSY	9:00A	9:50	M M F	OLON208	COMPTON
5952	PSY100	3.0	SURVEY OF PSY	10:00A	10:50	M W F	OLON 208	BECKER
5954	PSY100	3.0	SURVEY OF PSY	3:00P	4:15	M W	OLON208	EDMAN
5955	PSY100	3.0	SURVEY OF PSY	7:30A	8:45	T Th	OLON208	BECKER
5957	PSY100	3.0	SURVEY OF PSY	7:30A	8:45	T Th	OLON 205	COMPTON
5956	PSY100	3.0	SURVEY OF PSY	9:00A	10:15	T Th	OLON 208	EDMAN
5959	PSY100	3.0	SURVEY OF PSY	1:30P	2:45	T Th	OLON 208	EDMAN
5960	PSY100	3.0	SURVEY OF PSY	3:00P	4:15	T Th	OLON 208	FRISSELL
5961	PSY100	3.0	SURVEY OF PSY	4:30P	5:45	T Th	OLON208	FRISSELL
7961	PSY100	3.0	SURVEY OF PSY	6:00P	7:15	T Th	OLON 208	COMPTON
5958	PSY100	3.0	SURVEY OF PSY	12:00P	1:15	T Th	OLON 208	EDMAN
8964	PSY100	3.0	SURVEY OF PSY	10:30A	1:15	SAT	OLON 208	COMPTON

PREREQ: QUALIFICATION FOR ENG 100; QUALIFICATION FOR MATH 24
 COMMENT: THIS SECTION IS TAUGHT VIA THE INTERNET. CONTACT THE INSTRUCTOR (langley@hawaii.edu) VIA E-MAIL AS SOON AS YOU REGISTER FOR THE CLASS. MORE INFORMATION IS LISTED AT <http://www2.hawaii.edu/~langley>

5962G	PSY100	3.0	SURVEY OF PSY	ARR	INTERNET	FRISSELL
5962K	PSY100	3.0	SURVEY OF PSY	ARR	INTERNET	FRISSELL
5962L	PSY100	3.0	SURVEY OF PSY	ARR	INTERNET	FRISSELL
5962M	PSY100	3.0	SURVEY OF PSY	ARR	INTERNET	FRISSELL
5962Q	PSY100	3.0	SURVEY OF PSY	ARR	INTERNET	FRISSELL
5962W	PSY100	3.0	SURVEY OF PSY	ARR	INTERNET	FRISSELL

PREREQ: ENG 100, 160, OR ESL 100 WITH A GRADE OF C OR HIGHER
 COMMENT: WI COURSE. SEE WRITING INTENSIVE.

5953	PSY100W	3.0	SURVEY OF PSY-WI	1:30P	2:45	M W	OLON 208	EDMAN
------	---------	-----	------------------	-------	------	-----	----------	-------

PREREQ: PSY 100; QUALIFICATION FOR ENG 100 AND MATH 24

5968	PSY230	3.0	INTRO PSYCHOBIO	12:00P	1:15	W F	OLON 208	COMPTON
------	--------	-----	-----------------	--------	------	-----	----------	---------

PREREQ: PSY 100; QUALIFICATION FOR ENG 100 AND MATH 24

5965G	PSY260	3.0	PSY OF PERSON	ARR	INTERNET	FRISSELL
5965K	PSY260	3.0	PSY OF PERSON	ARR	INTERNET	FRISSELL
5965L	PSY260	3.0	PSY OF PERSON	ARR	INTERNET	FRISSELL
5965M	PSY260					

PREREQ: QUALIFICATION FOR ENG 100 AND MATH 24 REC PREP: SOC 100
 5978 SOC251 3.0 INTRO TO SOC FAM 12:00P 1:15 WF OLON 205 MANN

PREREQ: QUALIFICATION FOR MATH 24; ENG 100, ESL 100, OR ENG 160 WITH A GRADE OF C OR HIGHER, SOC 100
 COMMENT: WRITING-INTENSIVE SECTION
 5979 SOC257W 3.0 SOC OF AGING-WI 11:00A 11:50 M WF OLON 205 MODAVI

LANGUAGE ARTS

***** AMERICAN SIGN LANGUAGE *****

PREREQ: ASL 101 OR EQUIVALENT
 5601 ASL 102 4.0 ELEMENTARY ASL I 8:30A 9:20 DAILY MOKI102 GALLIMORE
 5602 ASL 102 4.0 ELEMENTARY ASL I 9:30A 10:20 DAILY MOKI102 GALLIMORE

PREREQ: ASL 201 OR EQUIVALENT
 5603 ASL 202 4.0 INTERMEDIATE ASL 9:30A 10:20 DAILY MOKI101 LAMBRECHT

PREREQ: ASL 201 OR EQUIVALENT
 COMMENT: THIS IS AN INTERACTIVE TELEVISED COURSE
 9601G ASL 202 4.0 INTERMEDIATE ASL 11:30A 12:55 M WF KAUI LAMBRECHT
 9601M ASL 202 4.0 INTERMEDIATE ASL 11:30A 12:55 M WF MAUI LAMBRECHT
 9601Q ASL 202 4.0 INTERMEDIATE ASL 11:30A 12:55 M WF HAWAII LAMBRECHT
 9601U ASL 202 4.0 INTERMEDIATE ASL 11:30A 12:55 M WF UHM LAMBRECHT

***** CHINESE *****

PREREQ: CHNSE 101 OR EQUIVALENT
 5605 CHNSE 102 4.0 ELEM MANDARIN II 9:30A 10:20 DAILY OLAP 211 FUJITANI

PREREQ: CHNSE 101 OR EQUIVALENT
 COMMENT: THIS IS AN INTERACTIVE TELEVISED COURSE
 5604K CHNSE 102 4.0 ELEM MANDARIN II 9:00A 9:50 DAILY NAI0 207 FLEMING
 5604L CHNSE 102 4.0 ELEM MANDARIN II 9:00A 9:50 DAILY LEEWARD FLEMING
 5604M CHNSE 102 4.0 ELEM MANDARIN II 9:00A 9:50 DAILY MAUI FLEMING
 5608 CHNSE 131 4.0 CONVERSATION & CUL 12:30P 1:25 TWTf OLAP 204 HWANG

PREREQ: CHNSE 201 OR SATISFACTORY SCORE ON LANGUAGE PLACEMENT TEST
 5606 CHNSE 202 4.0 INT MANDARIN II 10:30A 11:20 DAILY OLAP 211 FUJITANI

PREREQ: CHNSE 201 OR SATISFACTORY SCORE ON LANGUAGE PLACEMENT TEST
 COMMENT: THIS IS AN INTERACTIVE TELEVISED COURSE
 5607L CHNSE 202 4.0 INT MANDARIN II 8:00A 8:50 DAILY LEEWARD FLEMING

***** COMMUNICATIONS *****

PREREQ: SATISFACTORY PERFORMANCE ON INFORMAL SPEECH SCREENING TEST
 5609 COMUN 145 3.0 INTERPER COMMUN 7:30A 8:45 M W OLON106 LETTA
 5610 COMUN 145 3.0 INTERPER COMMUN 3:00P 4:15 M W OLON105 JOHNSON
 7611 COMUN 145 3.0 INTERPER COMMUN 6:00P 7:15 M W OLON105 NORFLEET
 5611 COMUN 145 3.0 INTERPER COMMUN 7:30A 8:45 T Th OLON106 LETTA
 5612 COMUN 145 3.0 INTERPER COMMUN 9:00A 10:15 T Th OLON106 LETTA
 5613 COMUN 145 3.0 INTERPER COMMUN 12:00P 1:15 T Th OLON105 JOHNSON

***** EDUCATION *****

PREREQ: CURRENT (WITHIN THE PAST 12 MONTHS) T.B. CLEARANCE; BE WILLING TO SUBMIT TO FINGERPRINTING FOR BACKGROUND CHECKS FOR SCHOOL SECURITY; QUALIFICATION FOR ENG 102 OR INSTRUCTOR RECOMMENDATION
 COREQ: REGISTRATION IN A 3 CREDIT SERVICE LEARNING CLASS; INVOLVEMENT IN A SERVICE LEARNING PROJECT FOR S.L. CLASS
 5614 ED198 1.0 LITERACY/TUTORIN 10:30A 11:45 F KALI 104 HARA

***** ENGLISH *****

PREREQ: QUALIFICATION FOR ENG 100 ON THE KCC PLACEMENT TEST OR A GRADE OF C OR HIGHER IN ENG 22

5619 ENG 100 3.0 EXPOS WRTG 7:30A 8:45 M W MANE104A MCKAY
 5623 ENG 100 3.0 EXPOS WRTG 1:30P 2:45 M W MANE104A LAMB-TAMURA
 5625 ENG 100 3.0 EXPOS WRTG 3:00P 4:15 M W OLON202 KAWAHARADA
 5627 ENG 100 3.0 EXPOS WRTG 4:30P 5:45 M W MANE104A LAMB-TAMURA
 5628 ENG 100 3.0 EXPOS WRTG 4:30P 5:45 M W OLON202 KAWAHARADA
 5629 ENG 100 3.0 EXPOS WRTG 4:30P 5:45 M W OLON106 GULLIKSON
 5621 ENG 100 3.0 EXPOS WRTG 9:00A 10:15 T Th MANE104A SACHDEVA
 5634 ENG 100 3.0 EXPOS WRTG 10:30A 11:45 T Th ILIA203A DOOLEY
 5635 ENG 100 3.0 EXPOS WRTG 10:30A 11:45 T Th MANE104A MAKAGON
 5641 ENG 100 3.0 EXPOS WRTG 3:00P 4:15 T Th OLON106 MCCARRICK
 5645 ENG 100 3.0 EXPOS WRTG 3:00P 4:15 T Th MANE104A LUNDSTROM
 5642 ENG 100 3.0 EXPOS WRTG 4:30P 5:45 T Th OLON106 MCCARRICK
 5637 ENG 100 3.0 EXPOS WRTG 12:00P 1:15 T Th MANE104A LUNDSTROM
 5639 ENG 100 3.0 EXPOS WRTG 12:00P 1:15 T Th OLON202 MAKAGON
 5644 ENG 100 3.0 EXPOS WRTG 12:00P 1:15 W F ILIA203A THIES
 8600 ENG 100 3.0 EXPOS WRTG 7:30A 10:15 SAT OLON202 CUBERO

PREREQ: QUALIFICATION FOR ENG 100 ON THE KCC PLACEMENT TEST OR A GRADE OF C OR HIGHER IN ENG 22

COMMENT: COMPUTER ASSISTED SECTION; BEGINNING TYPING SKILLS NEEDED
 5618 ENG 100 3.0 EXPOS WRTG 7:30A 8:45 M W KALI109 SKINNER
 5620 ENG 100 3.0 EXPOS WRTG 9:00A 10:15 M W KALI110 ROBINSON
 5622 ENG 100 3.0 EXPOS WRTG 10:30A 11:45 M W KALI110 ROBINSON
 5624 ENG 100 3.0 EXPOS WRTG 1:30P 2:45 M W KALI109 INOUE
 5626 ENG 100 3.0 EXPOS WRTG 3:00P 4:45 M W KALI109 REISNER
 7601 ENG 100 3.0 EXPOS WRTG 6:00P 7:15 M W KALI109 REISNER
 5630 ENG 100 3.0 EXPOS WRTG 7:30A 8:45 T Th KALI110 PAK
 5631 ENG 100 3.0 EXPOS WRTG 7:30A 8:45 T Th KALI109 SKINNER
 5632 ENG 100 3.0 EXPOS WRTG 9:00A 10:15 T Th KALI109 INOUE
 5633 ENG 100 3.0 EXPOS WRTG 9:00A 10:15 T Th KALI110 ROBINSON
 5636 ENG 100 3.0 EXPOS WRTG 10:30A 11:45 T Th KALI110 ROBINSON
 5643 ENG 100 3.0 EXPOS WRTG 3:00P 4:15 T Th KALI109 SHIMABUKURO
 7602 ENG 100 3.0 EXPOS WRTG 6:00P 7:15 T Th KALI109 REISNER
 5638 ENG 100 3.0 EXPOS WRTG 12:00P 1:15 T Th KALI109 INOUE
 5617 ENG 100 3.0 EXPOS WRTG 10:30A 1:20 F KALI109 KIRKPATRICK

PREREQ: QUALIFICATION FOR ENG 100 ON THE KCC PLACEMENT TEST OR A GRADE OF C OR HIGHER IN ENG 22

COMMENT: THIS SECTION IS CONDUCTED ON THE INTERNET.
 CONTACT THE INSTRUCTOR (james@hawaii.edu) VIA E-MAIL AS SOON AS YOU HAVE REGISTERED.
 5616G ENG 100 3.0 EXPOS WRTG-INTER ARR INTERNET SHIMABUKURO
 5616H ENG 100 3.0 EXPOS WRTG-INTER ARR INTERNET SHIMABUKURO
 5616K ENG 100 3.0 EXPOS WRTG-INTER ARR INTERNET SHIMABUKURO
 5616L ENG 100 3.0 EXPOS WRTG-INTER ARR INTERNET SHIMABUKURO
 5616m ENG 100 3.0 EXPOS WRTG-INTER ARR INTERNET SHIMABUKURO
 5616Q ENG 100 3.0 EXPOS WRTG-INTER ARR INTERNET SHIMABUKURO

PREREQ: QUALIFICATION FOR ENG 100 ON THE KCC PLACEMENT TEST OR A GRADE OF C OR HIGHER IN ENG 22

COMMENT: THIS SECTION IS RESERVED FOR MALAMA.
 CONTACT MIKE ANE FOR INFORMATION ABOUT THE MALAMA SERIES OF CLASSES.
 5640 ENG 100 3.0 EXPOS WRTG 1:30P 2:45 T Th ILIA 203A HARADA

PREREQ: QUALIFICATION FOR ENG 100 ON THE KCC PLACEMENT TEST OR A GRADE OF C OR HIGHER IN ENG 22
 COMMENT: THIS SECTION IS CONDUCTED ON THE INTERNET.
 CONTACT THE INSTRUCTOR (kirkpatr@hawaii.edu) VIA E-MAIL AS SOON AS YOU HAVE REGISTERED. ADDITIONAL INFORMATION LISTED AT <http://leahi.kcc.hawaii.edu/~kirkpatr>
 5615G ENG 100 3.0 EXPOS WRTG-INTER ARR INTERNET KIRKPATRICK
 5615H ENG 100 3.0 EXPOS WRTG-INTER ARR INTERNET KIRKPATRICK

5615K ENG 100 3.0 EXPOS WRTG-INTER ARR INTERNET KIRKPATRICK
 5615L ENG 100 3.0 EXPOS WRTG-INTER ARR INTERNET KIRKPATRICK
 5615M ENG 100 3.0 EXPOS WRTG-INTER ARR INTERNET KIRKPATRICK
 5615W ENG 100 3.0 EXPOS WRTG-INTER ARR INTERNET KIRKPATRICK

PREREQ: QUALIFICATION FOR ENG 100, 160, OR ESL 100

5649 ENG 108 1.0 EDITING 1:30P 2:45 M W ILIA 202 HARADA
 SPECIAL DATES FOR CLASS CODE 5649: 01-26-00 TO 02-25-00
 5647 ENG108 1.0 EDITING 12:00P 1:15 T Th ILIA 206 HARADA
 SPECIAL DATES FOR CLASS CODE 5647: 01-25-00 TO 02-24-00
 5648 ENG108 1.0 EDITING 12:00P 1:15 T Th ILIA 206 HARADA
 SPECIAL DATES FOR CLASS CODE 5648: 02-28-00 TO 04-06-00

PREREQ: QUALIFICATION FOR ENG 160 ON THE KCC PLACEMENT TEST

OR A GRADE OF C OR HIGHER IN ENG 22
 COMMENT: COMPUTER ASSISTED SECTION; BEGINNING TYPING SKILLS NEEDED.

5650 ENG 160 3.0 BUS/TECH WRITING 1:30P 2:45 M W KALI110 BOGDANOWICZ
 5651 ENG 160 3.0 BUS/TECH WRITING 3:00P 4:15 T Th KALI110 BOGDANOWICZ

PREREQ: ENG 100, 160, OR ESL 100 WITH A GRADE OF C OR HIGHER

COMMENT: WRITING-INTENSIVE SECTION.
 5652 ENG 204W 3.0 CREATIVE WRTNG-W 1:30P 2:45 M W ILIA203A DOOLEY
 5653 ENG 204W 3.0 CREATIVE WRTNG-WI 10:30A 11:45 T Th KALI109 PAK

PREREQ: ENG 100, 160, OR ESL 100 WITH A GRADE OF C OR HIGHER

COMMENT: WRITING-INTENSIVE SECTION. COMPUTER ASSISTED SECTION; BEGINNING TYPING SKILLS NEEDED.
 5655 ENG209W 3.0 BUS/MTG WRTG-WI 3:00P 4:15 M W KALI110 BOGDANOWICZ
 5656 ENG209W 3.0 BUS/MTG WRTG-WI 12:00P 1:15 T Th KALI110 BOGDANOWICZ
 5654 ENG209W 3.0 BUS/MTG WRTG-WI 10:30A 1:25 F KALI110 BOGDANOWICZ

PREREQ: ENG 100, 160, OR ESL 100 WITH A GRADE OF B OR HIGHER

COMMENT: WRITING-INTENSIVE SECTION. COMPUTER ASSISTED INSTRUCTION. BEGINNING TYPING SKILLS NEEDED.
 5659 ENG215W 3.0 ACV EXPO WRTNG-WI 1:30P 2:45 T Th KALI 110 ROBINSON

PREREQ: ENG 100, 160, OR ESL 100 WITH A GRADE OF B OR HIGHER

COMMENT: WRITING-INTENSIVE SECTION.
 5658 ENG215W 3.0 ADV EXPO WRTNG-WI 9:00A 10:15 M W MANE 104A MAKAGON

PREREQ: ENG 100, 160, OR ESL 100 WITH A GRADE OF B OR HIGHER, COMPUTER COMPETENCY

COMMENT: WRITING-INTENSIVE INTERNET SECTION. CONTACT THE INSTRUCTOR (kirkpatr@hawaii.edu) VIA E-MAIL AS SOON AS YOU REGISTER FOR THE CLASS. ADDITIONAL INFORMATION LISTED AT <http://leahi.kcc.hawaii.edu/~kirkpatr>

5657G ENG215W 3.0 ADV EXPO WRTNG-W ARR INTERNET KIRKPATRICK
 5657H ENG215W 3.0 ADV FXPO WRTNG-W ARR INTERNET KIRKPATRICK
 5657K ENG215W 3.0 ACV EXPO WRTNG-W ARR INTERNET KIRKPATRICK
 5657M ENG215W 3.0 ADV EXPO WRTNG-W ARR INTERNET KIRKPATRICK
 5657Q ENG215W 3.0 ADV EXPO WRTNG-W ARR INTERNET KIRKPATRICK

PREREQ: ENG 100, 160 OR ESL 100 WITH A GRADE OF C OR HIGHER

COMMENT: WRITING-INTENSIVE SECTION
 5689 ENG 227W 3.0 WRTG FOR PUBLIC-WI 9:00A 10:15 M W LAMA 118 AU

***** ENGLISH AS A SECOND LANGUAGE *****

PREREQ: QUALIFICATION FOR ENG 100 ON THE KCC PLACEMENT TEST

OR GRADE OF C OR HIGHER IN ENG 22 OR SUCCESSFUL COMPLETION OF ESOL 94

5691 ESL100 3.0 EXPOS WRTG 9:00A 10:15 M W ILIA 203A NOJI
 5692 ESL100 3.0 EXPOS WRTG 9:00A 10:15 T Th ILIA203A NOJI
 5690 ESL100 3.0 EXPOS WRTG 1:30P 2:45 T Th ILIA202 NOJI

***** ENGLISH FOR SPEAKERS OF OTHER LANGUAGES *****

COMMENT: CREDIT/NO CREDIT GRADING ONLY
 5695 ESOL 90 5.0 BASIC ESOL 9:15A 10:20 MTWTh ILIA 202 MALM

PREREQ: SUCCESSFUL COMPLETION OF ESOL 90 OR A SCORE BETWEEN 31 AND 49 ON THE CELSA PLACEMENT TEST.

COMMENT: CREDIT/NO CREDIT GRADING ONLY.
 5696 ESOL 91 5.0 INTERMEDIATE ESOL 8:00A 9:05 MTWTh ILIA 203 MALM
 5697 ESOL 91 5.0 INTERMEDIATE ESOL 1:30P 2:35 MTWTh ILIA 203 MALM

PREREQ: SUCCESSFUL COMPLETION OF ESOL 91 OR A SCORE HIGHER THAN 50 ON THE CELSA PLACEMENT TEST AND

SUBSEQUENT PLACEMENT BY WRITING SAMPLE TEST.
 COMMENT: CREDIT/NO CREDIT GRADING, ONLY.
 5698 ESOL92 5.0 HIGH INTERMED ESOL 9:15A 10:20 MTWTh ILIA203 CHING
 5699 ESOL92 5.0 HIGH INTERMED ESOL 2:45P 3:50 MTWTh ILIA206A LAMBERT
 6600 ESOL92 5.0 HIGH INTERMED ESOL 4:30P 5:35 MTWTh ILIA206A LAMBERT

PREREQ: SUCCESSFUL COMPLETION OF ESOL 92 OR INTENSIVE TRANSITION COURSE OR A SCORE HIGHER THAN 50 ON THE

CELSA PLACEMENT TEST AND SUBSEQUENT PLACEMENT BY WRITING SAMPLE TEST
 COMMENT: CREDIT/NO CREDIT GRADING ONLY

6601 ESOL 94 5.0 ADVANCED ESOL 10:30A 11:35 MTWTh ILIA203 NOJI
 6602 ESOL 94 5.0 ADVANCED ESOL 2:45P 3:50 MTWTh ILIA203 CHING
 7604 ESOL 94 5.0 ADVANCED ESOL 6:00P 7:05 MTWTh ILIA206A LAMBERT
 6603 ESOL 94 5.0 ADVANCED ESOL 11:45A 12:50 TWTf ILIA203 CHING

***** FRENCH *****

PREREQ: FR 101 OR EQUIVALENT
 6689 FR102 4.0 ELEM FR II 7:30A 8:20 DAILY OLAP205 ARNOLD
 6690 FR102 4.0 ELEM FR II 8:30A 9:20 DAILY OLAP205 ARNOLD

PREREQ: FR 201, PLACEMENT BY EXAM OR INSTR. CONSENT

6691G FR202 3.0 INTER FR II 12:00P 1:15 T Th KAUI ARNOLD
 6691K FR202 3.0 INTER FR II 12:00P 1:15 T Th NAI0 206 ARNOLD

***** HAWAIIAN *****

6606 HAW101 4.0 ELEM HAWAIIAN I 3:30P 4:25 MTWTh OLAP212 STAFF
 6604 HAW101 4.0 ELEM HAWAIIAN I 7:30A 8:20 DAILY OLAP212 STAFF
 6605 HAW101 4.0 ELEM HAWAIIAN I 8:30A 9:20 DAILY OLAP212 STAFF
 6607 HAW101 4.0 ELEM HAWAIIAN I 11:30A 12:25 TWTf OLAP212 NAPOLEON

PREREQ: HAW 101 OR EQUIVALENT OR SATISFACTORY SCORE ON LANGUAGE PLACEMENT TEST

6611 HAW102 4.0 ELEM HAWAIIAN II 2:30P 3:25 J MTWTh OLAP 212 STAFF
 6610 HAW102 4.0 ELEM HAWAIIAN II 10:30A 11:20 DAILY OLAP 212 TASAKA

PREREQ: HAW 101 OR EQUIVALENT.
 COMMENT: THIS SECTION HAS SEATS RESERVED FOR MALAMA. CONTACT MIKE ANE FOR INFORMATION ABOUT THE MALAMA

SERIES OF CLASSES.
 6608 HAW102 4.0 ELEM HAWAIIAN II 8:30A 9:20 DAILY OLAP 212 NAPOLEON
 6609 HAW102 4.0 ELEM HAWAIIAN II 9:30A 10:20 DAILY OLAP 212 TASAKA

PREREQ: HAW 102 OR EQUIVALENT OR SATISFACTORY SCORE ON LANGUAGE PLACEMENT TEST

6612 HAW201 4.0 INTER HAW I 1:30P 2:25 MTWTh OLAP 212 NAPOLEON

PREREQ: HAW 201 OR EQUIVALENT OR SATISFACTORY SCORE ON LANGUAGE PLACEMENT TEST

6614 HAW202 4.0 INTER HAW II 12:30P 1:25 TWTf OLAP 212 TASAKA

PREREQ: RAW 201 OR SATISFACTORY SCORE ON HAW 202 PLACEMENT TEST

COMMENT: THIS COURSE IS OFFERED AS PART OF THE MALAMA SERIES PLEASE CONTACT MIKE ANE FOR MORE INFORMATION.
 ALSO, REFER TO THE MALAMA SECTION OF THIS SCHEDULE.
 6613 HAW202 4.0 INTER HAW II 9:30A 10:20 DAILY OLAP 105 NAPOLEON

*** JAPANESE ***

PREREQ: PLACEMENT BY EXAMINATION

6621	JPNSE 101	4.0	ELEM JPNSE I	2:30P	3:25	MTWTh	OLAP 211	NAGAI
6622	JPNSE 101	4.0	ELEM JPNSE I	3:30P	4:25	MTWTh	OLAP 211	NAGAI
7605	JPNSE101	4.0	ELEM JPNSE I	5:00P	6:25	M WTh	OLAP 211	KOBUKE
7606	JPNSE101	4.0	ELEM JPNSE I	7:00P	8:25	M WTh	OLAP105	KITADE
6617	JPNSE101	4.0	ELEM JPNSE I	7:30A	8:20	DAILY	OLAP 211	SHINAGAWA
6625	JPNSE101	4.0	ELEM JPNSE I	8:30A	9:20	DAILY	OLAP 211	KATAOKA
6618	JPNSE 101	4.0	ELEM JPNSEI	9:30A	10:20	DAILY	ILIA 202A	FUJIKAWA
6619	JPNSE 101	4.0	ELEM JPNSEI	9:30A	10:20	DAILY	OLAP 204	KATAOKA
6620	JPNSE1 01	4.0	ELEM JPNSEI	10:30A	11:20	DAILY	ILIA 202A	SHINAGAWA
6623	JPNSE101	4.0	ELEM JPNSEI	11:30A	12:25	TWThF	OLAP 205	FUJIKAWA
6624	JPNSE 101	4.0	ELEM JPNSE I	11:30A	12:25	TWThF	OLAP 211	STAFF

PREREQ: JPNSE 101 OR SATISFACTORY SCORE ON LANGUAGE PLACEMENT TEST

6629	JPNSE102	4.0	ELEM JPNSE II	2:30P	3:25	MTWTh	ILIA 202A	KOBUKE
7607	JPNSE102	4.0	ELEM JPNSE II	5:00P	6:25	M WTh	OLAP 105	KITADE
7608	JPNSE102	4.0	ELEM JPNSE II	7:00P	8:25	M WTh	OLAP 211	KOBUKE
6627	JPNSE102	4.0	ELEM JPNSE II	8:30A	9:20	DAILY	OLAP 204	KONDO
6628	JPNSE 102	4.0	ELEM JPNSE II	10:30A	11:20	DAILY	OLAP 204	KONDO
6626G	JPNSE102	4.0	ELEM JPNSEII		ARR		INTERNET	SHINAGAWA
6626H	JPNSE102	4.0	ELEM JPNSE II		ARR		INTERNET	SHINAGAWA
6626K	JPNSE102	4.0	ELEM JPNSEII		ARR		INTERNET	SHINAGAWA
6626L	JPNSE102	4.0	ELEM JPNSEII		ARR		INTERNET	SHINAGAWA
6626M	JPNSE 102	4.0	ELEM JPNSE II		ARR		INTERNET	SHINAGAWA
6626Q	JPNSE102	4.0	ELEM JPNSE II		ARR		INTERNET	SHINAGAWA
6630	JPNSE102	4.0	ELEM JPNSE II	12:30P	1:25	TWThF	OLAP 211	KATAOKA
6632	JPNSE131	4.0	JPNSE CONV & CUL	1:30P	2:25	MTWTh	OLAP 211	FUJIKAWA
6631	JPNSE131	4.0	JPNSE CONV & CUL	8:30A	9:20	DAILY	ILIA 202A	FUJIKAWA

PREREQ: JPNSE 102 OR SATISFACTORY SCORE ON LANGUAGE PLACEMENT TEST

7609	JPNSE 201	4.0	INTER JPNSE I	5:00P	6:25	M WTh	OLAP 205	NAGAI
6633	JPNSE 201	4.0	INTER JPNSE I	7:30P	8:20	DAILY	OLAP 204	KONDO
6634	JPNSE 201	4.0	INTER JPNSEI	11:30A	12:25	TWThF	OLAP204	KATAOKA
6635	JPNSE 201	4.0	INTER JPNSE I	12:30P	1:25	TWThF	OLAP 205	ISHIGAMI

PREREQ: SATISFACTORY SCORE ON LANG PLACEMENT TEST/JPNSE 201

6636	JPNSE 202	4.0	INTER JPNSE II	1:30P	2:25	MTWTh	ILIA 202A	SHINAGAWA
7610	JPNSE 202	4.0	INTER JPNSE II	7:00P	8:25	M WTh	OLAP 205	NAGAI

PREREQ: JPNSE 201 OR SATISFACTORY SCORE ON LANGUAGE PLACEMENT TEST

COMMENT: THIS IS A TELEVISED COURSE ON 'OLELO, (CABLE TV)

6637K	JPNSE 202	4.0	INTER JPNSE II	10:00A	11:00	TWF	NAIO 206	ISHIGAMI
6637L	JPNSE 202	4.0	INTER JPNSE II	10:00A	11:00	TWF	LEEW ARD	ISHIGAMI
6637W	JPNSE 202	4.0	INTER JPNSE II	10:00A	11:00	TWF	WINDWARD	ISHIGAMI

*** JOURNALISM ***

STUDENT MUST PAY LAB FEE OF \$50 TO OFFICE OF CONTINUING EDUCATION, ILIMA 105C.

PREREQ: ICS 101; ENG 100, ENG 160, ESL 100 OR INSTRUCTOR CONSENT

6615	JOURN 175	3.0	DESKTOP PUBLISHI	1:30P	3:00	M W	LAMA118	AU
------	-----------	-----	------------------	-------	------	-----	---------	----

PREREQ: QUALIFICATION FOR ENG 100 OR 160; INSTRUCTOR CONSENT

COMMENT: HOURS MAY BE ARRANGED.

6616	JOURN285V	3.0	NEWSPAPER PROD	10:30A	11:20	M W F	LAMA 118	AU
------	-----------	-----	----------------	--------	-------	-------	----------	----

*** KOREAN ***

PREREQ: KOR 101

6638	KOR102	4.0	ELEM. KOREAN II	11:30A	12:25	TWThF	OLAP 105	YUEN
------	--------	-----	-----------------	--------	-------	-------	----------	------

PREREQ: KOR 201 OR SATISFACTORY SCORE ON LANG-PLACEMENT TEST

6639	KOR202	4.0	INTER KOREAN II	10:30A	11:20	DAILY	OLAP 105	YUEN
------	--------	-----	-----------------	--------	-------	-------	----------	------

*** LINGUISTICS ***

PREREQ: ENG 100, 160, OR ESL 100 WITH A GRADE OF C OR HIGHER

COMMENT: WRITING-INTENSIVE SECTION

6641	LING102W	3.0	INTRO TO LANG-WI	10:30A	11:45	M W	MANE104A	INOUE
6642	LING102W	3.0	INTRO TO LANG-WI	7:30A	8:45	T Th	MANE104A	PAGOTTO
6640	LING102W	3.0	INTRO TO LANG-WI	10:30A	1:25	F	OLON106	INOUE

*** LEARNING SKILLS ***

COMMENT: CLASSES FOR DEAF AND HARD-OF-HEARING STUDENTS ONLY

PREREQ: INTERMEDIATE SIGN LANGUAGE SKILLS AND INTERVIEW. CONSENT OF INSTRUCTOR.

SEE SPECIFIC PREREQ FOR EACH CLASS.

PREREQ: ENGLISH EVALUATION PLACEMENT IN LSK 90

6643	LSK 90	12.0	BASIC INTENSIVE	9:00A	11:50	DAILY	MOKI 105	BRIDENBAUGH
------	--------	------	-----------------	-------	-------	-------	----------	-------------

PREREQ: LSK 90 OR ENGLISH EVALUATION PLACEMENT IN LSK 91

6644	LSK 91	12.0	INTER INTENSIVE	9:00A	11:50	DAILY	MOKI 105	BRIDENBAUGH
------	--------	------	-----------------	-------	-------	-------	----------	-------------

PREREQ: LSK 91 OR ENGLISH EVALUATION PLACEMENT IN LSK 92

6645	LSK 92	12.0	HIGH INTER INTEN	9:00A	11:50	DAILY	MOKI 105	BRIDENBAUGH
------	--------	------	------------------	-------	-------	-------	----------	-------------

PREREQ: LSK 92 OR ENGLISH EVALUATION PLACEMENT IN LSK 94;

6646	LSK94	12.0	ADVANCED INTENSIVE	9:00A	11:50	DAILY	MOKI 105	BRIDENBAUGH
------	-------	------	--------------------	-------	-------	-------	----------	-------------

*** SPANISH ***

6684	SPAN 101	4.0	BEG SPANISH	3:30P	4:25	MTWTh	OLAP 205	KEIL
------	----------	-----	-------------	-------	------	-------	----------	------

6683	SPAN 101	4.0	BEG SPANISH	12:30P	1:25	TWThF	ILIA 202A	STAFF
------	----------	-----	-------------	--------	------	-------	-----------	-------

PREREQ: SPAN 101 OR EQUIVALENT OR SATISFACTORY SCORE ON LANGUAGE PLACEMENT TEST

6681	SPAN102	4.0	ELEM SPAN II	9:30A	10:20	DAILY	OLAP205	BERESIWSKY
------	---------	-----	--------------	-------	-------	-------	---------	------------

6682	SPAN102	4.0	ELEM SPAN II	10:30A	11:20	DAILY	OLAP205	BERESIWSKY
------	---------	-----	--------------	--------	-------	-------	---------	------------

6680	SPAN102	4.0	ELEM SPAN II	11:30A	12: 25	TWThF	ILIA202A	STAFF
------	---------	-----	--------------	--------	--------	-------	----------	-------

6679	SPAN102	4.0	ELEM SPAN II	12:30P	1:25	TWThF	OLAP105	KEILL
------	---------	-----	--------------	--------	------	-------	---------	-------

PREREQ: SPAN 102 OR EQUIVALENT OR SATISFACTORY SCORE ON LANGUAGE PLACEMENT TEST

6685	SPAN 201	3.0	INT SPANISH I	1:30P	2:45	M W	OLAP 205	KEILL
------	----------	-----	---------------	-------	------	-----	----------	-------

PREREQ: SPAN 201 OR EQUIVALENT OR SATISFACTORY SCORE ON LANGUAGE PLACEMENT TEST

6686	SPAN 202	3.0	INT SPAN II	1:30P	2:45	T Th	OLAP 205	BERESIWSKY
------	----------	-----	-------------	-------	------	------	----------	------------

*** SPEECH ***

REC. PREP: QUALIFICATION FOR ENG 100 OR 160; OR ESL 100

6651	SP151	3.0	PERSONAL/PUB SP	7:30A	8:45	M W	OLON 105	BYSTROM
6652	SP151	3.0	PERSONAL/PUB SP	9:00A	10:15	M W	OLON 106	LETTA
6653	SP151	3.0	PERSONAL/PUB SP	10:30A	11:45	M W	OLON 202	BYSTROM
6654	SP151	3.0	PERSONAL/PUB SP	10:30A	11:45	M W	OLON 105	DASPIT
6655	SP151	3.0	PERSONAL/PUB SP	1:30P	2:45	M W	OLON 202	DASPIT
6656	SP151	3.0	PERSONAL/PUB SP	3:00P	4:15	M W	OLON 106	KASHIWADA
6657	SP151	3.0	PERSONAL/PUB SP	4:30P	5:45	M W	OLON 105	STAFF
7612	SP151	3.0	PERSONAL/PUB SP	7:30P	8:45	M W	OLON 105	NORFLEET
6658	SP151	3.0	PERSONAL/PUB SP	7:30A	8:45	TTh	OLON 105	JOHNSON
6659	SP151	3.0	PERSONAWPUB SP	10:30A	11:45	TTh	OLON 105	TOGUCHI
6670	SP151	3.0	PERSONAL/PUB SP	1:30P	2:45	TTh	OLON 105	KASHIWADA
6671	SP151	3.0	PERSONAL/PUB SP	3:00P	4:15	TTh	OLON 105	KASHIWADA
6672	SP151	3.0	PERSONAL/PUB SP	4:30P	5:45	TTh	OLON 105	DASPIT
6692	SP151	3.0	PERSONAL/PUB SP	10:30A	1:25	F	OLON 105	NORFLEET

PREREQ: ENG 100, 160, OR ESL 100 WITH A GRADE OF C OR HIGHER COMMENT: WRITING-INTENSIVE SECTION. COMMENT: WI COURSE. SEE WRITING INTENSIVE. COMMENT: ADMISSION TO HONORS PROGRAM REQUIRED. SEE HONORS A-SECTION.

6673	SP151A	3.0	PERSONAL/PUB SP	1:30P	2:45	M W	OLON 106	KASHIWADA
------	--------	-----	-----------------	-------	------	-----	----------	-----------

PREREQ: ENG 100, 160, OR ESL 100 WITH A GRADE OF C OR HIGHER

COMMENT: WRITING-INTENSIVE SECTION

6674	SP200W	3.0	SP FOR TEACHERS	9:00A	10:15	M W	OLON 105	TOGUCHI
------	--------	-----	-----------------	-------	-------	-----	----------	---------

6675	SP200W	3.0	SP FOR TEACHERS	9:00A	10:15	T Th	OLON 105	TOGUCHI
------	--------	-----	-----------------	-------	-------	------	----------	---------

REC. PREP: QUALIFICATION FOR ENG 100 OR ENG 160

6676	SP231	3.0	PERFORMANCE OF LIT	10:30A	11:45	T Th	OLON 106	KASHIWADA
------	-------	-----	--------------------	--------	-------	------	----------	-----------

REC. PREP: SP 151, ENG 100, 160, OR ESL 100

6677	SP 251	3.0	PRIN EFFECT SPKG	1:30P	2:45	MW	OLON 105	TOGUCHI
------	--------	-----	------------------	-------	------	----	----------	---------

6678	SP 251	3.0	PRIN EFFEC SPKG	9:00A	10:15	TTh	OLON 202	JOHNSON
------	--------	-----	-----------------	-------	-------	-----	----------	---------

*** TAGALOG ***

PREREQ: TAG 101 OR EQUIVALENT

6687	TAG 102	4.0	ELEM TAGALOG II	1:30P	2:25	MTWTh	OLAP 105	CERVANIA
------	---------	-----	-----------------	-------	------	-------	----------	----------

PREREQ: TAG 201 OR EQUIVALENT

6688	TAG 202	4.0	INTER TAG II	2:30P	3:25	MTWTh	OLAP 105	CERVANIA
------	---------	-----	--------------	-------	------	-------	----------	----------

HOLOMUA PROGRAM

*** PRECOLLEGE COMMUNICATIONS ***

6647	PCC 20	0.0	ENG IN ACAD CONT	8:00A	9:20	DAILY	ILIA 228F	STAFF
------	--------	-----	------------------	-------	------	-------	-----------	-------

6648	PCC 20	0.0	ENG IN ACAD CONT	9:00A	10:20	DAILY	ILIA 206	STAFF
------	--------	-----	------------------	-------	-------	-------	----------	-------

6649	PCC 20	0.0	ENGG IN ACAD CONT	10:00A	11:20	DAILY	ILIA 228F	STAFF
------	--------	-----	-------------------	--------	-------	-------	-----------	-------

6650	PCC 20	0.0	ENG IN ACAD CONT	1:30P	2:50	DAILY	ILIA 206	STAFF
------	--------	-----	------------------	-------	------	-------	----------	-------

*** ENGLISH ***

PREREQ: PCC 20 OR A SCORE EQUIVALENT TO NINTH GRADE READING LEVEL; OR QUALIFICATION FOR ENG 21V ON THE KCC

PLACEMENT TEST; OR INSTRUCTOR CONSENT.

5660	ENG 21V	3.0	DEVELOP READING	7:30A	9:20	M W	KALI 104	IDA
------	---------	-----	-----------------	-------	------	-----	----------	-----

5661	ENG 21V	3.0	DEVELOP READING	10:00A	11:50	M W	KALI 104	CHANG
------	---------	-----	-----------------	--------	-------	-----	----------	-------

5662	ENG 21V	3.0	DEVELOP READING	10:30A	12:20	M W	OLON 106	IDA
------	---------	-----	-----------------	--------	-------	-----	----------	-----

5663	ENG 21V	3.0	DEVELOP READING	1:30P	3:20	M W	KALI 104	HARA
------	---------	-----	-----------------	-------	------	-----	----------	------

5664	ENG 21V	3.0	DEVELOP READING	9:00A	10:50	T Th	KALI 104	KURATA
------	---------	-----	-----------------	-------	-------	------	----------	--------

5668	ENG 21V	3.0	DEVELOP READING	2:30P	4:20	T Th	KALI 104	HARA
------	---------	-----	-----------------	-------	------	------	----------	------

7613	ENG 21V	3.0	DEVELOP READING	5:00P	6:50	T Th	KALI 104	CUNHA
------	---------	-----	-----------------	-------	------	------	----------	-------

5665	ENG 21V	3.0	DEVELOP READING	12:00P	1:50	T Th	KALI 104	IDA
------	---------	-----	-----------------	--------	------	------	----------	-----

PREREQ: QUALIFICATION FOR ENG 22 ON THE KCC PLACEMENT TEST OR INSTRUCTOR RECOMMENDATION

5670	ENG 22	3.0	INTRO EKPOS WRTIG	7:30A	8:45	WW	OLON 202	HACSKAYLO
------	--------	-----	-------------------	-------	------	----	----------	-----------

5671	ENG 22	3.0	INTRO EXPOS WRTG	7:30A	8:45	M W	ILIA 202	CHANG
------	--------	-----	------------------	-------	------	-----	----------	-------

5678	ENG 22	3.0	INTRO EXPOS WRTG	9:00A	10:15	M W	OLON 202	DOOLEY
------	--------	-----	------------------	-------	-------	-----	----------	--------

6693	ENG 22	3.0	INTRO EXPOS WRTG	10:30A	11:45	M w	ILIA 202	HARA
------	--------	-----	------------------	--------	-------	-----	----------	------

5674	ENG
------	-----

*** MATHEMATICS ***

PREREQ: TESTED PLACEMENT AT MATH 24, "C" OR HIGHER IN MATH 1 OR SATISFACTORY COMPLETION OF PCM 23
COMMENT: YOU MUST BUY A SCIENTIFIC CALCULATOR FOR THIS CLASS

5701	MATH 24	3.0	EL ALGEBRA I	8:00A	8:50	MWF	ILIA 103	KODAMA
5702	MATH 24	3.0	EL ALGEBRA I	9:00A	9:50	MWF	ILIA 103	KODAMA
5704	MATH 24	3.0	EL ALGEBRA I	10:00A	10:50	MWF	ILIA 103	MOORE
5705	MATH 24	3.0	EL ALGEBRA I	11:00A	11:50	MWF	ILIA 103	STAFF
5706	MATH 24	3.0	EL ALGEBRA I	1:30P	2:45	MW	ILIA 103	MOORE
5707	MATH 24	3.0	EL ALGEBRA I	3:00P	4:15	MW	ILIA 103	METZ
7707	MATH 24	3.0	EL ALGEBRA I	4:30P	5:45	MW	ILIA 103	METZ
5708	MATH 24	3.0	EL ALGEBRA I	7:30A	8:45	TTh	ILIA 106	OKAMURA
5709	MATH 24	3.0	EL ALGEBRA I	9:00A	10:15	TTh	ILIA 106	OKAMURA
5710	MATH 24	3.0	EL ALGEBRA I	10:30A	11:45	TTh	ILIA 103	KOMENAKA
5711	MATH 24	3.0	EL ALGEBRA I	10:30A	11:45	TTh	ILIA105	VO
5714	MATH 24	3.0	EL ALGEBRA I	1:30P	2:45	TTh	ILIA105	VO
5715	MATH 24	3.0	EL ALGEBRA I	3:00P	4:15	TTh	ILIA103	VO
5712	MATH 24	3.0	EL ALGEBRA I	12:00P	1:15	TTh	ILIA106	KADALA
5713	MATH 24	3.0	EL ALGEBRA I	12:00P	1:15	TTh	ILIA107	STAFF
5716	MATH 24	3.0	EL ALGEBRA I	12:00P	1:15	WF	OLAP 213	MOORE
5717	MATH 24	3.0	EL ALGEBRA I	12:00P	1:15	WF	OLAP 213	KOMENAKA
8702	MATH 24	3.0	EL ALGEBRA I	7:30A	10:15	SAT	OLAP 213	SCHWAB

COMMENT: STUDENT MUST BE CONCURRENTLY ENROLLED IN MATH 24.
STUDY GROUP FOR MATH 24 WILL MEET WITH AN INSTRUCTOR AND A STUDENT AIDE FOR 75 MINUTES ONCE A WEEK.
THE STUDY GROUPS ARE LIMITED TO 8 STUDENTS.

IF YOU ARE REPEATING MATH 24 AFTER RECEIVING A D OR AN F GRADE, YOU SHOULD SELECT A STUDY GROUP.
CHOOSE THE SAME INSTRUCTOR FOR MATH 24 AND MATH 24L.

0704	MATH 24L	0.0	MATH 24 STD GRP	10:00A	11:00	M	ILIA 228E	KODAMA
0701	MATH 24L	0.0	MATH 24 STD GRP	11:00A	12:00	M	ILIA 228E	MOORE
0703	MATH 24L	0.0	MATH 24 STD GRP	9:00A	10:00	T	ILIA 228E	VO
0702	MATH 24L	0.0	MATH 24 STD GRP	10:30A	11:30	T	ILIA 228E	OKAMURA
0705	MATH 24L	0.0	MATH 24 STD GRP	10:00A	11:00	F	ILIA 228E	KOMENAKA

REC. PREP: B OR HIGHER IN MATH 1 OR PLACEMENT AT MATH 24+

COMMENT: THIS COURSE IS PART OF AN ACCELERATED MATH 24/25 OPTION.
STUDENT MUST REGISTER CONCURRENTLY IN THE PAIRED MATH 25 SECTION.

COMMENT: YOU MUST BUY A SCIENTIFIC CALCULATOR FOR THIS CLASS

57031	MATH 24	3.0	EL ALGEBRA I	9:00A	9:50	MWF	ILIA 105	KOMENAKA
				9:00A	10:15	TTh	ILIA 105	KOMENAKA

Special dates for class code 57031: 01-10-00 to 03-03-00

REC. PREP: B OR HIGHER IN MATH 1 OR PLACEMENT AT MATH 24+ OR HIGHER

COMMENT: THIS COURSE IS PART OF AN ACCELERATED MATH 24/25 OPTION.
STUDENT MUST REGISTER CONCURRENTLY IN THE PAIRED MATH 24 SECTION.

COMMENT: YOU MUST BUY A SCIENTIFIC CALCULATOR FOR THIS CLASS

57032	MATH 25	3.0	EL ALGEBRA II	9:00A	9:50	MWF	ILIA 105	KOMENAKA
				9:00A	10:15	TTh	ILIA 105	KOMENAKA

Special dates for class code 57032: 03-06-00 to 05-03-00

COMMENT: STUDENT MUST BE CONCURRENTLY ENROLLED IN MATH 25

STUDY GROUPS FOR MATH 25 WILL MEET WITH AN INSTRUCTOR AND A STUDENT AIDE FOR 75 MINUTES ONCE A WEEK.
THE STUDY GROUPS ARE LIMITED TO 8 STUDENTS.

IF YOU ARE REPEATING MATH 25 AFTER RECEIVING A D OR AN F GRADE, YOU SHOULD SELECT A STUDY GROUP.
CHOOSE THE SAME INSTRUCTOR FOR MATH 25 AND MATH 25L.

0710	MATH 25L	0.0	MATH 25 STD GRP	1:30P	2:30	T	ILIA 228E	STAFF
0713	MATH 25L	0.0	MATH 25 STD GRP	10:00A	11:00	W	ILIA 228E	OKAMURA
0712	MATH 25L	0.0	MATH 25 STD GRP	1:30P	2:30	W	ILIA 228E	CHOCK
0714	MATH 25L	0.0	MATH 25 STD GRP	9:30A	10:30	Th	ILIA 228E	MOORE
0711	MATH 25L	0.0	MATH 25 STD GRP	10:30A	11:30	Th	ILIA 228E	KODAMA
0715	MATH 25L	0.0	MATH 25 STD GRP	3:00P	4:00	Th	ILIA 228E	FLANIGAN

PREREQ: C OR HIGHER IN MATH 24 OR PLACEMENT TEST RECOMMENDATION OF MATH 25

COMMENT: YOU MUST BUY A SCIENTIFIC CALCULATOR FOR THIS CLASS

5718	MATH 25	3.0	EL ALGEBRA II	8:00A	8:50	MWF	ILIA 106	OKAMURA
5719	MATH 25	3.0	EL ALGEBRA II	9:00A	9:50	MWF	ILIA 106	OKAMURA
5720	MATH 25	3.0	EL ALGEBRA II	10:00A	10:50	MWF	ILIA 105	STAFF
5721	MATH 25	3.0	EL ALGEBRA II	11:00A	11:50	MWF	ILIA 105	STAFF
5722	MATH 25	3.0	EL ALGEBRA II	11:00A	11:50	MWF	ILIA 106	STAFF
5723	MATH 25	3.0	EL ALGEBRA II	1:30P	2:45	MW	OLAP 115	OKAMURA
5724	MATH 25	3.0	EL ALGEBRA II	3:00P	4:15	MW	ILIA 106	FLANIGAN
7708	MATH 25	3.0	EL ALGEBRA II	4:30P	5:45	MW	ILIA 105	STAFF
5725	MATH 25	3.0	EL ALGEBRA II	7:30A	8:45	TTh	ILIA 103	KODAMA
5726	MATH 25	3.0	EL ALGEBRA II	9:00A	10:15	TTh	ILIA 103	KODAMA
5727	MATH 25	3.0	EL ALGEBRA II	10:30A	11:45	TTh	ILIA 106	MOORE
5730	MATH 25	3.0	EL ALGEBRA II	1:30P	2:45	TTh	ILIA 106	FLANIGAN
7724	MATH 25	3.0	EL ALGEBRA II	5:30P	6:45	TTh	ILIA 228F	FLANIGAN
5728	MATH 25	3.0	EL ALGEBRA II	12:00P	1:15	TTh	ILIA 105	MOORE
5729	MATH 25	3.0	EL ALGEBRA II	12:00P	1:15	TTh	OLAP 213	SCHWAB
5732	MATH 25	3.0	EL ALGEBRA II	12:00P	1:15	WF	ILIA 105	STAFF
5733	MATH 25	3.0	EL ALGEBRA II	12:00P	1:15	WF	ILIA 106	SCHWAB
5734	MATH 25	3.0	EL ALGEBRA II	12:00P	1:15	WF	OLAP 113	STAFF

PREREQ: QUALIFICATION FOR ENG, 22; GRADE OF C OR HIGHER IN MATH 1,

OR SATISFACTORY COMPLETION OF PCM 23, OR TESTED PLACEMENT AT MATH 24 OR 25

COMMENT: YOU MUST PURCHASE A TEXAS INSTRUMENTS TI-83 GRAPHING CALCULATOR FOR THE CLASS.

THIS CLASS PREPARES STUDENTS FOR MATH 100, MATH 100H, AND MATH 115.

5735	MATH 81	6.0	MATH FOUNDATIONS	10:30A	11:45	MTWTh	ILIA 107	SCHWAB
5736	MATH 81	6.0	MATH FOUNDATIONS	3:00P	4:15	MTWTh	ILIA 107	ASTROMOFF

FOOD SERVICE & HOSPITALITY EDUCATION

6445	FSHE 209	4.0	GARDE MANGER	2:30P	7:30	MTWTh	OHELO 206	RADOMSKI
SPECIAL DATES FOR CLASS CODE 6445: 01/10/00 TO 01/02/2000								
6446	FSHE 209	4.0	GARDE MANGER	2:30P	7:30	MTWTh	OHELO 206	RADOMSKI
SPECIAL DATES FOR CLASS CODE 6446: 03/06/00 TO 05/03/2000								
5436	FSHE 258	4.0	HOSP/MARKETING SALES	10:00A	12:30	WF	OLAPA 116	EVANS
6452	FSHE 294	5.0	FSER PRACTICM	2:30P	6:30	M	OHELO 210	CABACUNGAN
6452	FSHE 294	5.0	FSER PRACTICM	2:30P	8:30	TWThF	OHELO 210	CABACUNGAN
SPECIAL DATES FOR CLASS CODE 6452: 3/6 - 5/3/2000								
6457	FSHE 216	5.0	ASIAN/PACIFIC	2:30P	6:30	M	OHELO 210	CABACUNGAN
6457	FSHE 216	5.0	ASIAN/PACIFIC	2:30P	8:30	TWThF	OHELO 210	CABACUNGAN
SPECIAL DATES FOR CLASS CODE 6457: 01/10/00 TO 03/03/00								
5444	FSHE 293E	3.0	HOSP INTERNSHIP II	9:45A	11:45	M	OLAPA 116	FUCHINO-NISH
(FOR HOPER MAJORS)								
5446	FSHE 293E	3.0	HOSP INTERNSHIP II	8:00A	10:00	T	OLAPA 112	THOMPSON
(FOR TRAVEL MAJORS)								
7410	FSHE 103	2.0	SANITATION/SAFETY	5:00P	6:50	W	OHELO 124	HOLTHAUS
6417	FSHE 110	4.0	FNDMTL COOKERY	5:00P	9:00	MTTh	OHIA 109	LEAKE
SPECIAL DATES FOR CLASS CODE 6417: 01/31/00 TO 05/03/00								
6430	FSHE 162	3.0	PRIN OF TRANS	12:00P	1:15	TTh	OLAPA 113	THOMPSON

NURSING

NURSING
PREREQ: 6 MONTHS FULL-TIME EQUIVALENT OF WORK EXPERIENCE IN A SKILLED NURSING FACILITY, HOSPITAL OR HOME HEALTH AGENCY WITH SATISFACTORY PERFORMANCE OF SPECIFIED SKILLS OR NURS 16 WITH GRADE OF "C" OR HIGHER; MINIMUM COMPASS READING SCORE OF 57, OR 8.0 ON NELSON DENNY, OR C OR HIGHER IN ENG 21 OR 2.0 GPR IN 12 OR MORE COLLEGE LEVEL CREDITS, OR HIGH SCHOOL DIPLOMA OR G.E.D.

5301	NURS 12	1.0	DISEASE, DIET, MED.	4:00P	7:00	TWF	LE'AH 003	YOUNG
SPECIAL DATES FOR CLASS CODE 5301: 03/21/2000 - 04/07/2000								

PREREQ: NURS 16 WITH GRADE OF "C" OR HIGHER OR 6 MONTHS FULL-TIME WORK EXPERIENCE IN A SKILLED NURSING FACILITY, HOSPITAL, OR HOME HEALTH AGENCY WITH SATISFACTORY PERFORMANCE OF SPECIFIED SKILLS; MINIMUM COMPASS READING SCORE OF 57; READING SCORE OF 8.0 ON NELSON DENNY, OR A GRADE OF "C" OR HIGHER IN ENG 21 OR A 2.0 GPR IN 12 OR MORE COLLEGE LEVEL CREDITS; HIGH SCHOOL DIPLOMA OR G.E.D.

5302	NURS 13	1.0	HELPING THERAPIES	4:00P	7:00	TWF	LE'AH 003	YOUNG
SPECIAL DATES FOR CLASS CODE 5302: 04/26/2000 TO 5/05/2000								

PREREQ: NURS 16 WITH A GRADE OF "C" OR HIGHER OR 6 MONTHS FULL-TIME WORK IN A SKILLED NURSING FACILITY, HOSPITAL, OR HOME HEALTH AGENCY WITH SATISFACTORY PERFORMANCE OF SPECIFIED SKILLS; MINIMUM COMPASS READING SCORE OF 57; READING SCORE OF 8.0 ON NELSON DENNY, OR A GRADE OF "C" OR HIGHER IN ENG 21, OR A 2.0 GPR IN 12 OR MORE COLLEGE CREDITS; A HIGH SCHOOL DIPLOMA OR G.E.D.

5303	NURS 14	1.0	REG, ACC, COMM RES	4:00P	7:00	TWF	LE'AH 003	YOUNG
SPECIAL DATES FOR CLASS CODE 5303: 4/11/2000 TO 4/26/2000								

PREREQ: MINIMUM COMPASS READING SCORE OF 61, CURRENT ONE RESCUER CPR CERTIFICATION

COMMENT: ACCEPTANCE TO NURSE'S AIDE PROGRAM REQUIRED

5305	NURS 16	8.0	NURSE'S AIDE	7:30A	2:00	MTWThF	LE'AH 005	YOUNG
SPECIAL DATES FOR CLASS CODE 5305: 01/10/2000 TO 03/08/2000								
5306	NURS 16	8.0	NURSE'S AIDE	7:30 A	2:00	MTWThF	LE'AH 005	TREDICK
SPECIAL DATES FOR CLASS CODE 5306: 03/13/2000 TO 05/12/2000								

COREQ: NURS 156

0016	NURS 156L	0.0	ADLT HLTH NURS ING	10:30A	12:30	T	TBA	STAFF
				7:00A	3:30	ThF	OFFCAMPUS	STAFF

PHARMACOLOGY

7301	PHARM 203	3.0	PHARMACOLOGY	5:30P	8:30	T	KOPIKO 128	STAFF
7302	PHARM 203	3.0	PHARMACOLOGY	5:30P	8:30	Th	KOPIKO 128	STAFF

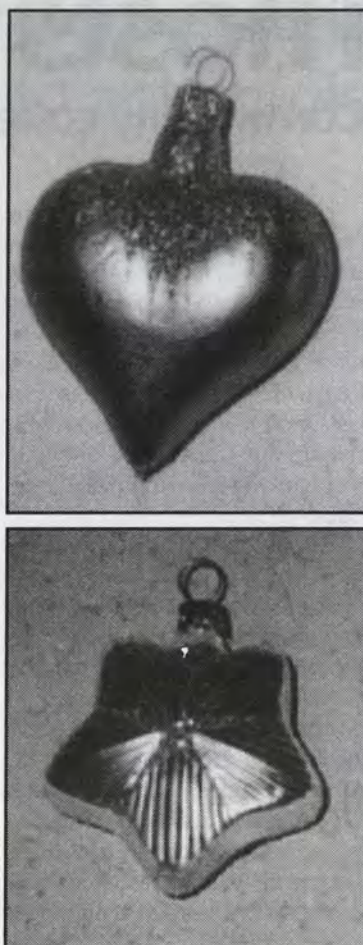
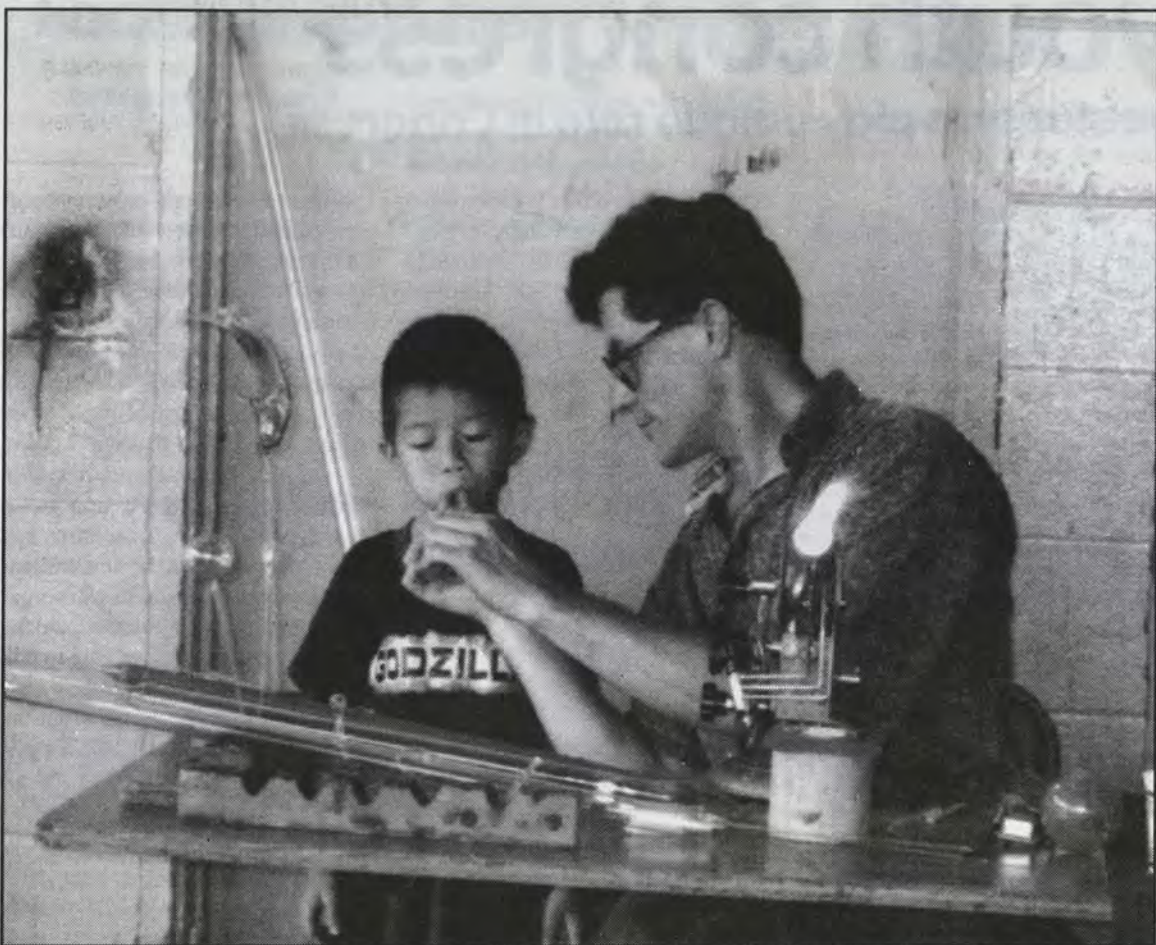
HEALTH SCIENCES

5025	HLTH 110	2.0	MED TERM	8:00A	8:50	T	KOPIKO 202	MOIKEHA
5023	HLTH 110	2.0	MED TERM	8:00A	8:50	Th	KOPIKO 202	MOIKEHA
5043	HLTH 280	2.0	DISEASE AND DISABILI	5:00P	6:00	M	HAS BEEN DELETED	

BUSINESS EDUCATION

5200	ACC 124	3.0	PRIN OF ACC I	01:30 PM	02:45	MW	KOP 126	VAN GEISON
Note: COURSE 5200 CANCELLED								
5200	ACC 126	3.0	PRIN OF ACC III	01:30 PM	02:45	MW	KOP 126	VAN GEISON
5206	ACC 150	3.0	USING COMP ACC	12:00 PM	01:15	TTh	KOP 104	VAN GEISON
5213	ACC 201	3.0	FINANCIAL ACCOUNTING	1:30 PM	02:45	TTh	KOP 126	DUGH
5214	AC C201	3.0	FINANCIAL ACCOUNTING	9:00 AM	10:15	MW	KOP 126	VAN GEISON
5216	ITS 215	3.0	CISCO II-NETWORK ROUT	3:00 PM	04:15	MW	KOP 104	GERLOCK
7216	ITS 215	3.0	CISCOII-NETWORK ROUT	7:30 PM	08:45	TTh	KOP 104	GERLOCK
7207	ENT120	3.0	START A SMALL BUS	06:00 PM	08:30	MW	OLAP 106	NAKAMAEJO
CLASS BEGINS 1/10 ENDS 3/6								
7208	ENT140	3.0	SMALL BUSINESS MGT	06:00 PM	08:30	MW	OLAP 106	STAFF
CLASS BEGINS 3/8 ENDS 5/3								
7209	ENT160	3.0	FIN FOR SMALL BUS	06:00 PM	08:30	TTh	OLAP106	STAFF
CLASS BEGINS 3/7 AND ENDS 5/3								

For details on these courses, please refer to the Spring 2000 Schedule of Classes available at the Bookstore. Check the bulletin board in 'Ilima for up-to-the minute changes.



Above: George Glaser teaches a young student how to make objects using glass blowing techniques. Right: Two Christmas ornaments created by George Glaser using glass blowing techniques that have been handed down through the decades

Glass blowing tradition kept alive

Krystal Sakata
Staff Writer

Many stores are beginning to display Christmas ornaments, cards and decorations. It is a sign that Christmas is drawing nearer. Have you ever thought about where the first ornaments were made?

George Glaser can tell you all about it. Glaser is a native of a small town called Lauscha in the former East Germany. This is where the very first Christmas tree ornaments were made. Since 1597, Lauscha has been the primary supplier of glass-blown Christmas ornaments.

George Glaser, 38, whose last name in itself means "working with glass" is a certified scientific glass blower. His inspiration to continue the family tradition comes from watching his great grandfather and

grandfather practice the art when he was a child.

Glaser went to school in Germany to learn glass-blowing. After a three year full time apprenticeship, he received his certificate in 1996. Glaser is a unique glass-blower because he uses a table torch. Using a table torch is very difficult because of the limit in size for each piece.

His first visit to Hawai'i was in 1991. He enjoyed his visit so much, he returned every year. In 1995, he decided to come to Hawai'i and stay permanently to study.

He is majoring in Liberal Arts here at KCC. He also works for the University of Hawai'i Science Department repairing broken instruments and constructing new ones. A scientific glass blower must work precisely according to the blueprints.

"It requires your mind," said Glaser. "You cannot think about anything else when working with hot glass. If you're not carefully handling it, you will lose control."

Last year, Glaser participated in a service learning project. He read with children at Palolo Elementary School. On his last day there, he did a glass-blowing demonstration for the children. The children, who had never seen a demonstration before, were delighted.

Although he enjoys his work, he takes pleasure from creating art pieces. Glaser listens to music when

creating art pieces - his favorite being the Rolling Stones. He has won several awards for his art pieces such as the "dragonfly," but is best known for his glass fountain pens. He continues to make changes to perfect the design.

Glaser will be at the Board of Student Publications Craft Fair from 7-4:30 p.m. on Nov. 14, at the KCC chapel. He will have his popular glass fountain pens (\$36), Christmas ball ornaments (\$5-\$12), and perfume bottles (\$20) among others on display for sale.

Bead Craze

Beading: A trend which some find to be an art of relaxation, while others feel a sense of power.

Krystal Sakata
Staff Writer

Accessories are in fashion this season. Beaded accessories are especially popular. Many people have taken up the art of beading; and like a virus, a bead craze has hit the world of arts and crafts.

Beads are things with holes and come in different shapes, sizes and colors. Beading is the art of selecting beads and stringing them up to create jewelry, such as necklaces and bracelets. It is not limited to necklaces and bracelets - lampshades, bags, shoes, gowns and vases are some of the other creations it encompasses.

People bead for a number of reasons today. Many people bead for themselves as a way to relax and express their creative talents. Others sell their beaded items. Gayle Harada, Holomua instructor at KCC, sets one evening a week aside to do activities that are unrelated with work. During this time, she includes beading. "I do wire (work), because it is repetitious and relaxing."

How did the bead craze start? Trisha Morioka, sales manager at DACS beads credits the entertainment industry for the bead craze. She traces the beginning of the craze back to Janet Jackson's "If" music video, where she wears a black beaded choker. "People wanted to copy that."

More recently, the power bracelets or prayer beads are all the rage. Power bracelets have always been around. Many people feel that certain semi-precious stone give fortune and luck. When celebrities like Richard Gere and Uma Thurman started wearing them for their religious beliefs, the power bracelets became trendy, said Morioka.

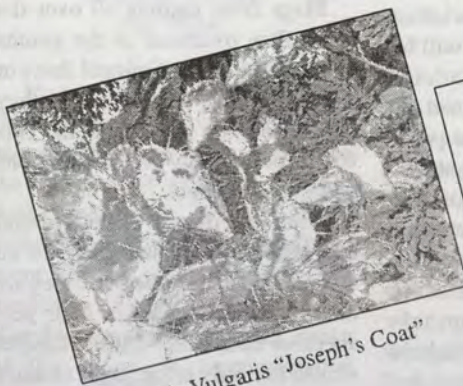
Stores specializing in beads have sprung up in Honolulu. If you would like to learn more about beads, stores such as Bead It!, DACS beads, and the Bead Gallery offer a vast variety of beads, findings, workshops and classes. The board of student publications will host a craft fair from 7-4:30 p.m. on Nov. 14, at the KCC Chapel where beaded jewelry and other items will be on sale. Join the bead craze!

Campus Car wash benefit OT students

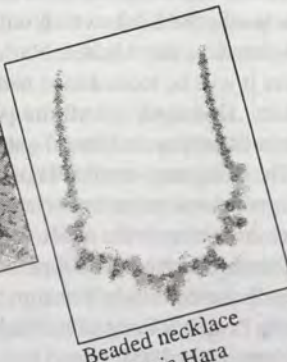
KCC Occupational Therapy Assistant Program is having a car wash to promote OT awareness and to raise money to send students to the annual conference in Seattle. It will be held on campus in the Olopuia building on Saturday, Nov. 20 from 9 a.m. till 3 p.m. The cost will be \$5 on the day of the car wash. Pre-sale tickets can be purchased at Kauila 210 for \$4. Free anti-stress pack per car and balloons for keikis.

Do not miss out on a great chance to get your car washed. While providing students the opportunity to broaden their minds by attending the Seattle conference.

Cactus, jewelry, screen savers, books, blown glass ornaments, clothing and peppers... what do these things have in common?



Opuntia Vulgaris "Joseph's Coat"



Beaded necklace by Mavis Hara

YOU CAN FIND THEM AT THE
KCC BOARD OF STUDENT PUBLICATIONS
CRAFT AND PLANT SALE

Sunday, November 14, in the KCC Chapel
from 8 a.m. to 4:30 p.m.

This will be held in conjunction with the
Diamond Head Arts and Crafts Fair and
the annual KCC Christmas in November brunch.

For more information contact Winifred Au, 743-9120

American Schools of Professional Psychology

Changing the Face of Psychology

What I like best about ASPP/Hawai'i is the friendly, helpful and family-oriented atmosphere on campus. The School is endowed with a faculty dedicated to excellence, and it offered the first Marriage and Family Therapy program in Hawai'i.

-Roxanne Giron • ASPP/Hawai'i Student

From traditional private practice to corporations, from counseling centers to board rooms, today's psychologists and professional counselors are finding endless opportunities waiting for them.



GRADUATE PROGRAMS OFFERED...

- APA Accredited Doctorate (PsyD) in Clinical Psychology
- Masters in Clinical Psychology
(Application Deadline — January 15, 2000)
- Professional Counseling/Marriage & Family Therapy (M.A.)
- Postdoctoral Respecialization Programs



American School of Professional Psychology
Hawai'i Campus

3465 Waialae Ave., Suite 300 • Honolulu, HI

(808) 735-0109

www.aspp.edu or visit our on-line campus at argosy.eduprise.com

Hawai'i hosts youth congress

Community college students play unique role in Congress

Congress results:

Global priorities for youth in the 3rd millennium

1. Education
2. Peace
3. Environment
4. Human Rights
5. Unemployment
6. Poverty
7. Corruption
8. Health
9. Population Growth
10. Global Economy

Last week's Millennium Young People's Congress represented the culmination of months of work by many individuals, including community college students from around the state. KCC's chapter of Phi Theta Kappa recruited and arranged training for 54 student facilitators from chapters at Leeward, Windward, Maui and Kapiolani Community colleges.

During the congress at the Hawai'i Convention Center, these student facilitators were responsible for overseeing youth discussions about problems facing the planet in the new millennium. Some discussion groups included as many as 178 youth, such as those involving the African delegation. Others included as few as 20, such as those involving the small island states delegation. Student facilitators were able to rise to the overwhelming challenges

these numbers provided.

"At first, it was very difficult," said Donovan Slack, who led discussions between European delegates. "There were 94 teenagers in the room, all wanting to be heard at the same time, and all with valid viewpoints." Slack said she had to rely heavily on training that she and the other student facilitators received from Tom Mitrano, an international lawyer and professional facilitator.

"We were so lucky to have that training," she said. "He told us exactly what to expect, and even gave us some international profiles with

cultural do's and don'ts so we would be prepared for the congress."

Maui Community College students Mark Leal and Prudence Hokuana-Gormley flew in for the opportunity to act as facilitators. "I had such a great time meeting all the different people throughout the week," said Leal, who lead

discussions between the small island states delegation. Hokuana-Gormley, who worked with the Asian delegation, said she was in awe when she realized all the different countries that were represented in her room. "I was nervous at first, especially with the Arab delegates," she said. It was difficult because young Arab men are not supposed to talk to women, said Hokuana-Gormley. "I ended up speaking to them through other people seated next to them."

Despite all the communication difficulties, each discussion group managed to come to consensus and youth priorities for the new millennium were born. Slack, who organized the student facilitators said the more the delegates were able to talk with each other, the more they realized they were all talking about the same things. When the vote for priorities was finally tallied, it was almost unanimous, she said. "How exciting it would be if adults could agree like this!"



Many involved in bringing Youth Congress to Hawai'i

Kristina Wright
Staff Writer

The MYPC was made possible through the combined efforts of Mae Mendelson, Head of the International Phase for the Youth Environmental Services, David Woollcombe, President of Peace Child International, and the United Nations, which gave the legal confirmation. The objective was to attain the opinions and focus ideas of the young delegates, and incorporate them into the U.N.'s agenda.

"We want the youth of this millennium to help kick-off the priorities of the new millennium," said Mendelson, "because they are the leaders of tomorrow." Mendelson also suggested that the Congress meet in Hawai'i. "It is the mid-point of the East and West, and would be a rare treat for some of the students to visit 'Paradise.'"

Finally with corporate funding, various State tourism accounts, individual table sales for the evening galas, and an enormous number of dedicated volunteers, two delegates from each participating country

packed their bags, acquired their visas and made their way here. One of the U.S. delegates sent to the Congress came from Hilo.

The students, however, were not the only ones present at the Congress. On Tuesday, Former Secretary General of the United Nations, Maurice Strong, spoke to the Congress on prevailing issues, and several of the nation's leaders—the Prime Minister of Mongolia, and the President of India—came to support their countries and get a hands-on understanding of what the delegates' viewpoints are.

The issues and collective ideas, of the Congress are currently being compiled into a booklet. KCC student Donovan Slack has been asked to help edit the book, which will be submitted to the United Nations, where it will be looked over and assessed. However, not all the problems will be inserted into the draft.

The delegates voted on Thursday, as to what was most important and necessary towards the entire region. As for the Congress, itself, plans are already being made for the next Young People's Congress to be held in Morocco in 2003.



Students ranging from 15-18 years of age from 103 nations represented their countries at the first Millennium Young People's Congress. At the Congress, which was held throughout the week at the State Capitol, Hilton Hawaiian Village, and the Convention Center, delegates discussed the issues and problems facing their governments.

MILLENNIUM



Young people's CONGRESS

A day of commitment

By Feiruz A. Garrison
Staff Writer

Flags from nations all over the globe flew overhead as the youths of nations in their National dress or Business Attire held them, as they waited to enter the ballroom. This would be the Day of Presentations and Commitments.

After nine days of discussion and deliberation they had come to an agreement on the issues that, they are committed to change in their perspective countries. These changes would not only effect their country but also the world. The Press Conference started in the Ballroom with representatives for Latin America, New Zealand, North America and Africa. Each group gave a list of the five areas that they would be focusing on and their commitment to bringing about change.

Yoaness Sekoruri of Morocco representative for Africa, Presented the list of five areas They have made a committed to change:

- 1.) Education- Intellectual understanding and open minds to eradicate illiteracy.
- 2.) Environmental -implementation of recycling.
- 3.) Health -Physical, Social and

Emotional responsible clean living as an essential part of life

4.) Poverty- availability and cooperation with one another to eradicate poverty and provide training for those who are in need.

"I see all of Africa coming together for "the Third Young People's Congress in the year 2006 in Morocco. We have gotten started let us start in love," said Younes Sekouri.

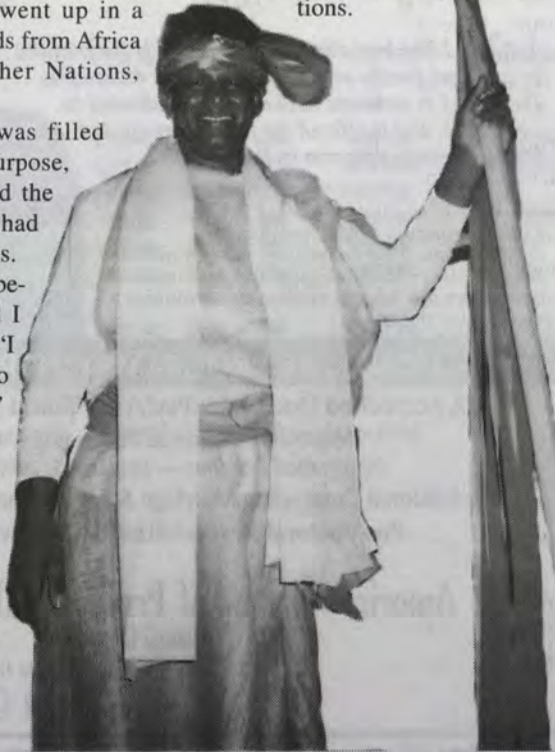
The ballroom went up in a thunderous applause from Africa as well as the other Nations, present.

The ballroom was filled with a sense of purpose, confidence covered the faces of all; they had reached a consensus.

"I have enjoyed being in Hawaii and I plan to visit again; "I will be in Morocco in the year 2006." said Peter Nyoh Baba of Rescue Mission Cameroon.

Peace Child International organized the Millennium Young People's Congress here in Hawaii. The

congress hosted 1,000 young boys and girls aged between 15-18, from different parts of the world. Lighting the path into the Millennium are the eyes of these youth. They came together with a vision and a commitment to change the world. Starting by identifying the problems in their own countries, together they identified global solutions.



Facilitating Africa

By Feiruz A. Garrison
Staff Writer

Africa was one of the most highly represented countries present, a very large continent with many different countries. There is a proliferation of problems in all of the different regions. Africa came together as one mind and one accord in order to help develop the bigger picture envisioned by the Young People's Congress.

KCC student and congress facilitator

Hannah Bingham worked with the continent of Africa. "Being a facilitator for the continent "We were trying to set up a list 5 of priorities. All of the regions that are continents separated and set up a list of their main priorities.

"The one thing I could see that was pervasive among everyone in the region was how passionate they were," said Bingham. "Kids as young as 15 years old who felt very strongly about what was going on in their country - how mature they

were."

Bingham's job as a facilitator was a bit daunting at times, she said. "Every person who came into the room came into that room with very strong beliefs. Because of that, it was a little difficult to reach some kind of consensus on even what the general beliefs were." Africa is a large continent with different things going on in all the different places. "Even with that going on, said Bingham, "everyone was here to make things better every where, and on that, they came to a consensus."



Looking for solutions

By Sherie Char
Staff Writer

In an attempt to decide on an action plan for Africa, delegates from that continent were unable to reach a consensus about their top five priorities. They deeply felt that all of the issues that were mentioned were equally important in their own way. After a lengthy discussion, a majority of the delegates mentioned these five problems, in random order: education, poverty, peace, human rights and corruption.

Approximately 178 delegates from Africa came to Hawaii to participate in the Millennium Young People's Congress from Oct. 21-29.

The youths, who were between the ages of 15-18 discussed the problems in Africa and what they believed should be the top five priorities on Oct. 27 at the 'Convention Center's ballroom. Previously in the day, Africa was divided into three groups. In the three groups,

each delegate discussed their country's problems and shared their thoughts on such issues. The facilitators tried their best to conduct the discussion and calm those with disagreements. A lot of the delegates wanted to raise questions and voice their opinions. They were there to represent their country and were proud to stand up for what they believed in. They were eager to address the problems that their countries faced. But, time was limited, everyone's opinion couldn't be heard. Some of the delegates pointed out that all of the issues were important, but they needed to have a consensus on the too five priori-

ties. The priorities needed to be narrowed down in order to attempt to solve them efficiently since there is a limited amount of time, energy and money. We can't try to solve all of the problems all at once, said one of the delegates. Some of the priorities that were mentioned in the discussion was about peace, education, poverty, corruption, human rights, environment and health issues. During this time, a lot of the delegates seemed to have favored peace and education. Through education, it is possible to solve some of the other problems that deal with the environment, peace and human rights, said a delegate. The youths were instructed to agree or disagree with

each topic in order to narrow down the list. Since there was a large number of delegates, counting raised hands would be a difficult and time-consuming task. As a result, the facilitators had everyone stand up. Those who agreed and wanted the topic as a part of Africa's priority list were instructed to sit down. The delegates who opposed the issue would remain standing until a count was taken. This activity provided an easier way to record and handle the situation. It also allowed the delegates the opportunity to stretch their legs so they wouldn't be sitting in their chairs throughout the entire discussion. On the next day, delegates from each country prepared a one-page personal action plan. In the plan, they discussed possible solutions to the problems, expected costs and personnel needed to put the projects into action.

"I want to encourage others to participate in sustainable development activities."
-Philip Toppin
Queens College,
Barbados



Mentors challenge youth to act on global priorities

Merilyn Tyau
Staff Writer

The Millennium Young People's Congress held a facilitated discussion of education, human inequality, peace tolerance, corruption, justice and poverty at a conference on Tuesday, Oct. 26, at the Hilton Hawaiian Village.

Two youth representatives from each country presented their national priorities. To enact such solutions to their problems, representatives are thinking globally and acting locally.

MYPC is a global youth process that focuses upon global sustainability, community activism and participation and peace. The purpose of MYPC is to empower young people to express and act upon their environmental, economic and social priorities for the next millennium.

This conference is one of many MYPC events which were held in Honolulu from Oct. 21-29, that gathered 1,000 of the world's most active and enthusiastic young people, to set the priorities for the 21st century. These events began in January with an international launch co-produced by Peace Child International and Green Globe. The young people of the world and Hawaii engaged in an unprecedented experience in global skills education.

During the discussion at the MYPC conference, Delegates from

United Nations, Argentina, Italy, Hollywood, India, were on the panel. Delegates are one male and one female from each participating country who have demonstrated achievement in the field of environmental activism or the promotion of sustainable development.

Delegates asked these youths what priorities will they take into action to improve their countries problems for the millennium. A male youth from Morocco spoke about his country's priority. "I want justice between the North and South. This

is the most important moment."

There are 36 conflicts running around the world. Peace is there.

By bringing peace together brings the seed of tolerance, said a male youth from Italy, who expressed his concern for peace.

pressed his concern for peace.

Youth representatives expressed issues they wish to act upon in their country and were discussed with the delegates. Issues brought up were: environmental protection, elimination of poverty, health and economic development. One delegate who is an active environmentalist challenged the youths by asking them what differences will they make to protect the environment.

Towards the end of the MYPC conference, youths will compose a book together by writing a summary of what they will do for the millennium based on the discussions from the events

"I want my generation to strive towards individual and community potential."
-Hannah Neville
Australia

Widespread corruption blocks peace, human rights in Africa

Kristina Wright
Staff Writer

Many disturbing issues were raised throughout the week. On Monday at the state Capitol, when the delegates of Africa met, topics such as education, health, poverty, violence, employment, and environment seemed to overwhelm the meeting. Fenni Shangula, a Namibian committee member, spoke of the corruption that

is engulfing her nation. The government has recently invested between \$30 million and \$300 million dollars for sending troops to assist in the war of the

Democratic Republic of the Congo. Namibia's presence in this war is just about as suicidal as the U.S. involvement was during the Vietnam War. Shangula also mentioned that the Namibian president, who repeatedly denied sending in troops, finally admitted to it, after a leak had been made to the press.

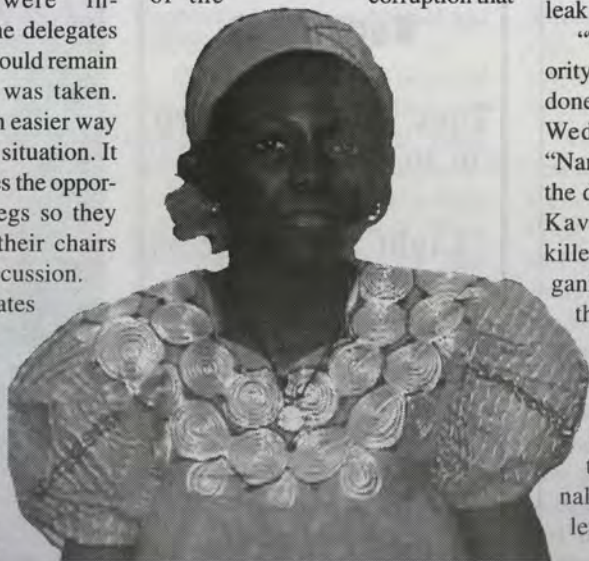
"They say that 'peace' is a top priority, but obviously nothing has been done to prove so," she added. Last Wednesday, Oct. 27, the "Namibian", a local paper, reported the death of a father and son, in the Kavango region. The two were killed, when UNITA bandits, an organized terrorist group, broke into their home, and shot them with an AK-47 rifle. When the residing Sergeant Ratjindua Tjivikua arrived at the scene, he told reporters, "if any action is to be taken, it will be an internal thing." The community was left in extreme discontent.

Nina Kettle, a South African

delegate, also had some interesting things to report about her country. "We have a poor and corrupt democracy. Since the 1994 removal of the death penalty, our crime rate has risen to one of the highest in the world. A woman is raped every 20 seconds, we have prison overflow, and child abuse, which is steadily increasing, is being ignored."

Another issue is individual rights. The nation of South Africa runs on the idealism of the Christian Church. The Gay community is being persecuted, Kettle said. "The church plans to have the government turn homosexuality into an illegal act, and the schools are implementing lessons specifically designed to incriminate homosexuals," she added.

Women are also being denied individual rights. Abortion, for example, is only performed on the woman after the physician approves. According to Kettle, the only means of a justifiable abortion is deformity or irreversible handicap. Even if the woman has been raped, or is suffering from a deadly disease, such as AIDS, the abortion can, and has been denied.



Study program gives needed student support

Tuia'ana McBraun
Staff Writer

Starting this past semester the Holomua Center at 'Iliahi 228, has put together organized study groups for students in English 22, Math 24, and Math 25. The Holomua Center has provided the time and the place, and faculty conduct most of the study groups. The study groups that are not conducted by instructors have tutors present so students always have someone who can help them.

The study groups are held in a classroom and follow a scheduled meeting of once a week on various days and times. There is a maximum of eight people to a study group to ensure personalized help that is not always possible in a bigger classroom setting. The study groups are listed in the Spring 2000 schedule of

classes but are non-credit and free of charge. There is also no charge when dropping or adding a study group to your schedule.

So far the study groups have been a positive experience for both students and instructors. Students have a chance to go over any topics in the class they might not have understood the first time around, and receive different explanations from fellow students and instructors. If a student is struggling with a concept they have an extra hour to go over it, whereas that extra time would not be possible during class.

The Holomua counselors have also been helping students with time management skills by providing calendars. Students are then able to map out how much time they need to spend studying and fitting the time needed in with other responsibilities like work and

transportation to and from school.

Students in the English study groups go over grammar, organization of papers, and receive feedback from other students on the content of their papers. "Students generally leave Holomua with the feeling that they can revise and improve their papers," says Christine Hacskaylo, an English instructor who also heads a study group. She has also noticed that students who are shy at the beginning of the semester gain confidence and begin to participate more in class as a result of attending the study groups. Students also share personal and class related experiences and develop a sense of support and friendship for one another.

Registering for a study group is just like a class, but free of charge. So check out the schedule of courses for dates and times.

Biotech program in development

Continued from page 1

"The school and the students would be connected with and know the players and their needs," says Berestecky. We (the departments) would also gain valuable connections for clinical practicums, as well as connections to the continuum of information coming out of this rapidly advancing field.

Armstrong and Berestecky are also taking a look at similar types of programs on the mainland. They have already made contact with the "Biolink" organization, a consortium of educational institutions with biotech connections. This group is funded by the National Science Foundation. Its purpose is to share the information they've gathered and to help other institutions get started in the field.

Armstrong and Berestecky are also planning to go the mainland to get an idea of what other institutions are offering in the Biotech field.

Though generally optimistic, Armstrong does admit that there will be a few obstacles to getting the program off the ground. One problem that is already anticipated is a need to educate and convince Hawaii's biotech industry that KCC graduates, whether they have an A.S. degree or a Certificate, will have the abilities and appropriate education to get the job done. "Most organizations would normally only look for students with bachelor of science degrees," said Armstrong, adding, "Our students will be readily employable."

"We must be realists," said Berestecky, "Biotech in Hawai'i is rather young compared to Los Angeles, San Francisco, or Seattle. Our association with organizations on the mainland, such as Biolink, are important because the industry is more mature." Yet, Berestecky is confident in the school's ability to build a qualified work force and perhaps, even to be

Distance ed in the future

Continued from page 1

Remote learning does seem to be challenging, but many find the challenge rewarding. Distance learning is also allowing people who live in rural areas the opportunity to receive an education, as well as helping people who have a limited amount of time or whose work schedules don't allow them to attend classes. Of course, distance learning may also appeal to students who are just looking for a new and challenging experience. Whatever its appeal, distance learning is soon to become an integral part of the UH system so you may want to jump on the bandwagon early, because it is not a matter of if, just when. The community college web site has a wealth of information about distance learning and the programs that are currently being offered. The web site is at <http://www.hawaii.edu/ccc/> Just click on students and from there on distance learning is clearly marked. So click away.

Last minute study blues

Andrew Hamilton
Staff Writer

Along with the end of the semester comes tests and papers, stressing out and getting bad grades. There are many ways to avoid this, but it seems as if no one knows all of the ways. All I see when I take a final are kids sweating, cheating, and doing anything they can to pass. I'm here to give you a fail-proof way to passing every final you have this semester.

My first suggestion is to go to your closet and dust off those books that you spent \$200 on at the beginning of the semester. Hidden inside those books is where the information is that you need to pass the final. Scary isn't it? Those books actually contain answers.

Usually the teacher will not ask questions directly from the book, so you are going to have to retain the information inside your brain. A good way to do this is to read the important information over and over. A bad way to get information inside your brain is to read it into a tape recorder and put it under your pillow while you sleep. Trust me, this does not work. You will not get smarter while you sleep. If you were smart at the beginning of the semester then you would have bought a used book that had all the important information already highlighted. If you were not lucky enough to get a used book, then you will have to do the high-

lighting yourself.

At the end of each chapter is a synopsis of what went on in the chapter. It tells you what you should have learned. Get it! It tells you what you need to know, so remember those parts. Then the bold words throughout the chapter are also a good thing to study because bold is the international symbol for important.

Waiting until the day before the test to study is also not a good idea, unless you smoke crack. Figure out when your finals are and then spend 30 minutes each day studying one of the subjects, and I suggest you start that immediately. Procrastination is a disease that everyone seems to suffer from. If you can get rid of this disease, then you should do good on the finals.

Last, but definitely not least, is an if-all-else-fails way to pass every class. I'm talking about the classic bribing of the teacher. Most teachers will say that they would never take a bribe from a student, but given the right incentive every teacher has a weak spot. Of course \$5 dollars won't do it and even \$50 dollars probably wouldn't cut it. You have to really find out what the teacher loves and bribe with jewelry or perfume or malasadas.

You don't have to take this advice, but don't come whining back to me saying you didn't pass any of your classes. In fact, this was such good advice, I might even use it myself.

E Na Hauman Hawai'i E Nana mai
2000 - 2001 Financial Aid Workshop for Hawaiian students to discuss

- Overview of financial aid resources
- Emphasis on completion of the Kamehameha scholarship application

By whom: Kulia Ma Kapi'olani
The Native Hawaiian Project at KCC & Kamehameha Schools Post High School Scholarship Program

When: Thurs., Jan. 6, 2000 9 - 11:30 a.m.
Mon., Jan. 24, 2000 11 - 1:30 p.m.
Thurs., Jan. 27, 2000 5:30 - 8 p.m.

Where: 'Ōhi'a Building, Room 118

For more info contact Mike Ane at 734-9554

Christmas in November Brunch
November 14, 6:30 - 11 a.m.

Menu

- Kalua Pig and turkey (cooked in traditional Hawaiian imu)
- Scrambled eggs with green onion, mushrooms, and cheddar cheese
- Jash browns and steamed rice
- Fresh fruit salad and watermelon slices, yogurt, granola
- Assorted pastries, muffins, and quick-breads
- Coffee and orange juice

'Ōhi'a cafeteria
Tickets are \$7.
For more information regarding the Christmas in November brunch please call-734-9565.

FREE...FREE...FREE

Huaka'i a Kapi'olani
Travel Agency
Come and celebrate the start of KCC's on-campus travel agency.

The Voyage of Kapi'olani

Tues. Nov. 16th 10 a.m. to 4 p.m. Ōlapa 112

Light refreshments and snacks will be served. Students and Faculty are can fill out an entry blank to enter a weekend getaway.

FREE...FREE...FREE

University of Hawai'i
West O'ahu

UH West O'ahu offers junior- and senior-level courses to eligible students who have completed an associate in arts or 55 credits of qualified college courses. Call us at 454-4700 or visit our home page at www.uhwo.hawaii.edu.

An Accredited, Equal Opportunity/ Affirmative Action Institution

Earn bachelor's degrees with specializations in:

- Accounting
- Anthropology
- Business Administration
- Economics
- Hawaiian-Pacific Studies
- History
- Justice Administration
- Literature
- Philosophy
- Political Science
- Psychology
- Public Administration
- Sociology

Day, evening and weekend programs
Convenient location
Affordable tuition
Free parking
Personal attention

DJ's battle for the international turntablist federation

Michael Sarpy
staff writer

Wolfgang Amadeus Mozart with a blank score and a pen or Mix Master Mike with a stack of records and a mixer. Masters from different times would probably have been peers in the present. The respect that is called forth with the mention of Mozart will someday be equal to that of names like Q-Bert, Shadow, and Rob Shift. It's only a matter of time, time and education.

Someday your children or your children's children will read names like Mix master Mike or Babu and it will be historical knowledge! Their names are note worthy because they are involved in the progression of an artform known as Turntablism. A relatively unknown artform to the mainstream public but it's never too late to turn off the I-94 and learn something new, so here we go.

DJs, MCs, B-boys and Writing (otherwise known as graphitti), these are the four aspects, the four disciplines related to a lifestyle or way of life I call hiphop. Another word that encompasses these four paths is art and the people involved are really artists.

An artform that started in the late 70's in the heart of New York City, it was ridiculed and misunderstood

for a long, long time and, in my opinion, true hiphop is still misunderstood by the mainstream establishment such as commercial radio or MTV, but that's a discussion for another day.

Look at any new artform, take for example Duchamp's Urinal called "The Fountain", in 1917 it was banned from exhibit but now in 1999 it's priceless, yes a ceramic urinal like the kind you find in our precious KCC bathrooms. So free those minds of misconception and educate yourself, please.

This is our time, our history, being written as I type these words. Turntablism is a true form of art and skill, anyone that has seen it knows what I mean. It's a combination of physical hand-eye coordination and razor sharp rhythm and precision. Turntablism has developed in the last six years and has really evolved from the simple mixing of one record into another. It's grown into it's own brand of hiphop. Where turntablist make records with nothing but a planned routine, layered over samples and dozens of tracks. I can't give you a complete history here and now but by going out to competition you'll understand how incredible it is to witness their mastery, technique, and ridiculous finesse.

I know there are lots of you read-

ing this out there who may have never heard about this sort event, but once you go you'll come away feeling that you were a part of something passionate and special that only can be witnessed to understand the devotion and time it takes to reach this level of ingenuity and the skill it takes to become an I.T.F. champion turntablist.

This month, Turntablists from the four corners of the world are coming to "Battle in Paradise". The International Turntablist Federation is coming to our island in the Pacific. Three nights of the best beat juggling and scratch DJs the world has ever witnessed. If you've ever seen a performance from the likes of Q-Bert and Short Kut of the Invisibl Skratch Picklz, Rob Shift of the X-men or Mix Master Mike of the Beastie Boys then you know, this event has never been to Hawai'i and probably won't be back for a long time.

Maybe some of you know about this already and haven't really considered going but I'm telling you now, this is not a joke, make it to this event because there has never been something like this here and, like I said, the chances of a return is minimal. The I.T.F. picks a different venue for the finals every year. We are the lucky ones this year, so unless you've got plane fare for next year you better not miss out.

Other artists coming include: DjHonda, Shortcut and DJ Apollo of the Invisibl Skratch Picklz, 1996 ITF World Champion Total Eclipse, Roc Raida, Mista Sinista, Rob Swift of the X-ecutioners, 1997-1998 ITF World Champion Vin Roc, 1997-98 ITF Team World Champions the Beat Junkies' Rhetmatic, Melo-D, J-Rocc, hip-hop pioneer Grand Wizard Theodore (inventor of the scratch), Tony Touch, Supernatural



Scratch Dj, Q-Bert, of the Invisibl Skratch Picklz mixes up a little of his Turntable majic

and Jeru The Damaja and special guest TBA!

The I.T.F. is an organization created by DJs for DJs. They hold an annual event that squares off the champions from each I.T.F. chapter located in countries such as Japan, Australia, Germany, Italy. Fourteen finalist from all over the world will be competing in the "Advancement Class" elimination's, Nov. 15, at the Campus Center Ballroom, 3rd floor, 2456 Campus Rd. from 8 p.m. to 2 a.m. at the University of Hawai'i Mānoa campus \$12 for UH system students, \$15 general admission.

Finals will be held on Nov. 21, at World Cafe, 1130 North Nimitz, 3 p.m. to 10 p.m. only \$12 at the door. There is also a pre-party event on the Nov. 19, to kick off the weekend. It will be on the Navetek boat and will begin boarding at 9 p.m.. The boat leaves the dock at 11 p.m. for a cruise off the shores of Waikiki and will return at 2 a.m.. The boat party will be just that, a party to meet the finalists and some of the now world famous DJs that will be judging the competition on Saturday and Sunday.

WORK MAGIC.

Ready to Live, Learn and Earn in the most magical place on earth? Then become part of the Walt Disney World College Program. It's your opportunity to spend a semester making friends, making magic and making a difference.

November 15, 1999

8:30 am & Noon

Ohia Room 118

TO GET THERE, GET HERE

STOP BY AND DISCOVER A WORLD OF OPPORTUNITIES AT DISNEY.
www.wdcollegeprogram.com

Walt Disney World

COLLEGE PROGRAM

EOE • Drawing Creativity from Diversity

Harry Potter: the real reason why children are racing home

Kristina Wright
Staff Writer

Harry Potter is a 13-year-old boy, resident of 4 Privet Drive, student at Hogwart's Academy, and a wizard. Potter, who was raised by his Uncle Vernon and Aunt Petunia, due to the unsettling murder of his parents, plans to revisit the imaginations of all, in the summer of 2000, when the Fourth Year of his life at Hogwart's is finally published and distributed.

Yes, Harry Potter is a fictitious character created by, award-winning author, J.K. Rowling. Yet, many would protest that Potter does exist. Children across the globe claim Harry Potter is their friend. They can relate to the character's mischievousness, victories, downfalls, and hardships. They feel that they are with him every step of the way. The connection can be easily related to that of, another childhood figure, Baastian and his book, *The Never Ending Story*.

Children read for hours, unable to stop the pages from turning. Instead of rushing home to play video games, the young readers are rush-

ing to read these books.

"When you read Harry Potter books, the rest of your world, like reality, just goes blank," said 10 year old Brian Heigel, in an article written by the New York Times.

It doesn't only affect children though, adults have caught onto the craze too.

It's true. I, myself, have read all three of the books. After reading the first one, *Harry Potter and the Sorcerer's Stone*, which was impossible to put down, it was not hard to see, how a child can be so immersed in a book.

For starters, everything from the characters to the places in the story are uniquely described. Potter, for example, is fair-skinned; has messy jet-black hair, and deep green eyes; wears baggy clothes and glasses, that are bound together in the middle with masking tape, and has a scar on his forehead in the shape of a lightning bolt.

The halls of the Hogwart's Academy, the 7-year school for the young wizards in training, is filled with secret passage ways; ghosts like Nearly Headless Nick, whose guillotine blade didn't quite finish the

job; Moaning Myrtle, who haunts one of the girl's restrooms; intricate portraits that move and talk with those passing by; a large three-headed dog that guards a magical stone; and a mirror in one of the rooms, which shows the reflector his true desires.

Also, the story-telling is really remarkable. It hits into every possible childhood fantasy like beating the school bully in the final championship ball game, wearing invisible cloaks, talking to snakes, flying on broomsticks, saving unicorns, and just being the hero. These books give readers a chance to have those experiences.

There is something strangely admirable, about the way these books allow you to take absolute control of your vivid imagination. The pictures just seem to flood in as the words are read, both a rare and out of this age quality.

As the Harry Potter stories continue their reign at the top of the New York Times best-sellers list, children and adults who wait in anticipation for the fourth, find their only comfort by rereading the first three.

Workshops

Grammar Workshops
2nd Session (Wed.) 12-1 p.m. in 'Iliahi 228F
Nov. 10: Commas
Nov. 17: Wordiness
Transfer Workshops
All workshops will be held from 12-1:30 p.m.
Nov. 15: UH Dietics-'Ilima 202 B
Nov. 22: TBA
Nov. 29: TBA

CLASSIFIED ADS

IMMEDIATE OPENINGS!

Students earn \$375/\$575 weekly processing/assembling medical I.D. cards from your home. Experience unnecessary...we train you! Call MediCard 1-541-386-5290, ext.300.

DO YOU NEED HELP IN PROOFREADING YOUR SCHOOL PAPERS?

Call Jean at 946-7853

Deadline for scholarships for incoming UH Mānoa students of Asian-Pacific Ethnicity for the Multicultural Scholars Program in the College of Tropical Agriculture and Human Resources applications is Feb. 1, 2000. Five scholarships will be awarded, each providing over \$5,000 per year for 4 years, for full-time students. For more information contact Allene Chun at the CTAHR Academic Affairs Office, 956-6733, or e-mail at chuna@ctahr.hawaii.edu.

Job Education and Training (JET) program of Child and Family Service is offering two free, eight-day workshops. The sessions will be held from 9 a.m. to noon on Nov. 15-24 and Dec. 6-16. These workshops provide will help you learn how to look for a new job. Get a career with the potential for upward mobility. Learn how to access your employability in the current job market. For more information on Child and Family Service's JET Program, call Glen Arcalas at 681-1552.

Jobs

For more information, call the Job Placement Office at 734-9514 or go to 'Ilima 103.

Lab Assistant: PT 24 hrs., available Sun-Sat, be flexible between 2-11 p.m. Duties: Provide assistance to the technical staff in the laboratory. Requirements: Ability to communicate effectively, 6 months exp. in related medical field. Preferred: 6 months exp. in phlebotomy in clinical setting and or successful completion of phlebotomy training program.

Medical Transcriptionist: PT 20 hrs. per wk. Duties: Responsible for transcribing dictation by physicians and other healthcare professionals. Requirements: Knowledge of medical terminology, writing skills, understand diverse dictation styles, type 60 wpm using WordPerfect.

Management Assistant: FT Duties: Establish and maintain systems to insure complete and current credentials file. Requirements: HSG, two years secretarial exp., knowledge of PC applications, good phone skills, types 45 wpm. Preferred: Associate's degree in Secretarial Science, knowledge of medical terminology.

Customer Service Rep: \$12.86 per hr., various shifts and may include Sat. Duties: Answer phone, provide information and services, ability to solve problems. Requirements: HSD, minimum of 1 year previous phone exp., excellent sales and customer service background. Good communication skills, PC computer skills required.

Flowershop: PT flexible Mon.-Sat. 7:30 a.m.-5:30 p.m. \$5.50 per hr. Duties: Delivery of flowers, assist w/ florist related duties in shop pertaining to the operation of the flowershop. Requirements: Clean appearance, good speaking skills, familiar with Honolulu area, clean drivers abstract, ability to drive van.

Human Resources Coordinator: Duties: Provide administrative, logistics and clerical support to the department, administer and facilitate HR corporate program and process, research, drafts, recommendation, and coordinates additions and updates to HR corporate policy. Requirements: Track record of administering HR programs of moderate complexity with company-wide application, make recommendations for changes and improvements to programs, conduct presentations.

Home Health Aide: Hours are flexible, up to 40 hrs. per wk. Call-in positions are available to provide care for patients in the home. Duties: Perform a variety of services including bathing, incontinence care, range of motion exercises, meal preparation and light housekeeping. Requirements: Applicants must be graduates of an approved nurse aide program or able to meet agency competency requirements. One year of relevant work exp. is needed.

Wine Sales Associate: 1 FT or 2 PT from 10 a.m.-7 p.m. on Tues.-Sun. \$6.75 per hr. Duties: Ability to lift 45 pounds, receive deliveries, perform deliveries, stock shelves, sell wine, liquor and operate cash register. Requirements: Valid drivers license and must be 21 years of age.

Coming Attractions

Holiday Activities at the Honolulu Academy of Arts: A variety of special events are planned for the holiday season at the Honolulu Academy of Arts. From concerts, keiki-parent activities, and traditional Filipino Christmas Celebration. Matt Yee Honolulu's favorite cabaret star celebrates with A Show of Gratitude Nov. 20 at 8 p.m. in the Academy Theatre. Advance tickets are available for \$10 and tickets at the door on the evening of the performance will be \$15.

On Nov. 21 from 1-5 p.m, the Academy in cooperation with the Philippine Association of University Women will host Pasko! Celebration of the Philippines. This event is free to all which will include music and dance, cultural displays, ethnic foods, folk arts, and craft demonstrations. The Academy's annual Keiki Christmas Family Day is set for Dec. 5 from 1-4 p.m. Children 12 and under are free; the reduced admission fee for accompanying adults is \$1. The days events include a special performance by the Parasol Puppets in the new Education Wing Gallery.

Na Mele O Hawaii Key For Two - Slack Key Duets will be at the Academy Theatre on Sat. Nov. 13 at 7:30 p.m. All seats will be \$15. Featured acts will include Ledward Kaapana, and many more. For more information about this event call 532-8700.

The Bill and Melinda Gates Foundation announced the formation of the Gates Millennium Scholars program. To be eligible, minority college students must be U.S. citizens, have a minimum GPA of 3.3, be planning to continue undergraduate study or enroll in graduate school for the academic year 00-01, demonstrate significant financial need and exhibit leadership through community service.

Undergraduate scholarships are unrestricted, but scholars must be enrolled in a full-time program. In order to renew the scholarships annually, scholars must have a cumulative GPA of 3.0. Graduates must be enrolled in a full-time program of study in the fields of engineering, mathematics, science, education or library science. Applications will be made available on Nov. 2 at <http://www.gmsp.org/index.html>. The deadline is Feb. 1.



Aries (March 21- April 19):

Watch out for rocks in your shoes because they hurt.

Taurus (April 20- May 20):

The sounds of the ocean will be soothing to your ears after getting yelled at by your teacher.

Gemini (May 21- June 21):

As the world turns, you might get dizzy so be careful and don't fall down.

Cancer (June 22- July 22):

Don't forget to brush your teeth in the morning because cavities are no good.

Leo (July 23- Aug 22):

Stay away from the computer or you will get hooked and spend the rest of your life chatting with people you will never meet.

Virgo (Aug 23- Sept 22):

Three meals a day keeps the doctor away, but it also makes you gain weight so keep up with the exercise.

By: Andrew Hamilton

Libra (Sept 23- Oct 23):

The animal inside you is waiting to come out, don't be afraid to unleash the beast.

Scorpio (Oct 24- Nov 21):

Don't procrastinate on your homework or you will fall behind and not be able to do anything fun.

Sagittarius (Nov 22- Dec 21):

The cold weather can be intimidating so get as many sweatshirts as possible and wear them all at the same time and you will be nice and warm.

Capricorn Dec 22- Jan 19):

Bad drivers will be in abundance this weekend, so stay inside and feel nice and safe.

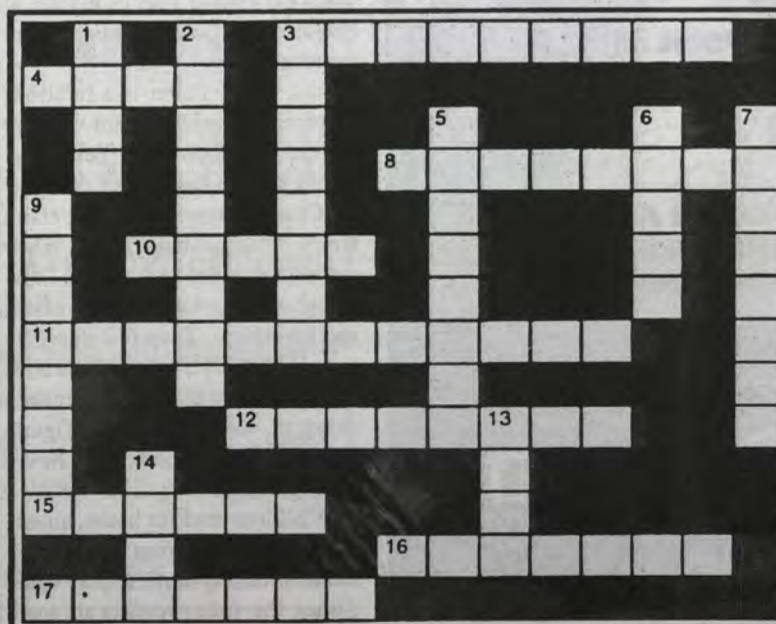
Aquarius (Jan 20- Feb 18):

The constant beeping sound you hear is the truck behind you. WATCH OUT!!!

Pisces (Feb 19- Mar 20):

Money doesn't grow on trees, but if it did you would be pretty rich, huh.

Fall Crossword By: Michelle Allman



Notices

PLACEMENT TESTING SCHEDULE FOR NOVEMBER

COMPASS Testing will be expanded in Nov. to include Fri.

Dates	Hours
November 2 - 4 (TWTh)	8 - 4 p.m.
November 5 (F)	8 - 1 p.m.
November 6 (S)	9 - 10 a.m.
November 9-10 (TW)	8 - 4 p.m.
November 12 (F)	8 - 1 p.m.
November 13 (S)	9 - 10 a.m.
November 16 - 18 (TWTh)	8 - 4 p.m.
November 19 (F)	8 - 1 p.m.
November 20 (S)	9 - 10 a.m.
November 23, 24 (TW)	8 - 4 p.m.
November 30 (T)	8 - 4 p.m.

Recess Nov. 11 (Th), 25 - 27 (Th - S)

Language and CELSA testing will be done on Tues., 12-4p.m., and Sat., 9 - 11 a.m. The Dec. schedule will be published in the third week of Nov.

ALANI CHILDREN'S CENTER SPRING 2000

Applications Available: Career Center, 'Ilima 103 or at Alani Who's Eligible? Students enrolled at KCC for Spring 2000. Faculty & staff employed at KCC for Spring 2000. PRIORITY: Single Parent Students Students enrolled in 9 or more credits Student receiving Financial Aid Assistance Full-time employees of KCC

REQUIREMENTS: Children must be age 2 - 5 by Spring 2000

HOURS: MON.-FRI., 7:30 a.m. to 4:30 p.m. (excluding holidays & non-instructional days)

Tuition: Full Time Preschool: \$415/month Toddler: \$435/month Part Time

Preschool: 2-Day \$205 every four weeks 3-Day \$305 every four weeks Toddler: 3-Day \$320 every four weeks

PRIORITY DEADLINE IS Nov. 30, 1999 APPLICATIONS RECEIVED AFTER THIS DATE WILL BE CONSIDERED ON A SPACE AVAILABLE BASIS

FOR MORE INFORMATION CALL: 845-9466 or 734-9500 Tuition subject to change

Registration

Complete shut-down of all student information system software: Dec. 6-17. No access to student registration, payment, or academic records. It will not be possible to print academic transcripts, do a verification of enrollment, make payments, or process any registrations and withdrawals.

Across:

- 3. all Saints eve
- 4. moderately cold
- 8. outdoor cook's fire
- 10. they fly south
- 11. November holiday
- 12. nut gathering animal
- 15. they change color
- 16. open air fire
- 17. higher learning place

Down:

- 1. eared plant
- 2. voting
- 3. wagon parties
- 5. allergy
- 6. aged apple juice
- 7. meetings of old friends
- 9. Fall sport
- 13. water from the sky
- 14. Autumn

HOW WILL YOU GET TO COLLEGE? NEED A LIFT?
When you serve part-time in Hawaii's own Army National Guard, you can discover opportunities to last a lifetime.
* part-time job with great pay
* money for college
* job skill training
* adventure
Call today and learn how
1-800-GO-GUARD
HAWAII ARMY NATIONAL GUARD
YOU CAN