

# Kapi'o

Vol. 25 No. 9

Kapiolani Community College

October 29, 1991

## Spring Schedule of Courses

The Spring schedule of courses appears in this issue of Kapi'o because the regular schedule could not be printed in time for mail-in registration.

Prerequisites for courses are NOT included. Students should check the catalog or go to the counseling office for the information. Any changes or additional information will also be available at the counseling office.

The schedule of courses will be available later this month.

## Blind student struck by machinery

Blind student Stephanine Good, walking with her seeing-eye-dog, was struck by a construction vehicle on the pathway in front of the Media Center Thursday morning.

Good said, "I had just turned the corner by the food service building when I heard the vehicle. I was on the side of the walkway so I stopped walking to wait for the guy to go by. The next thing I knew I was struck in the side. I screamed and the guy stopped and I guess he backed up and went around me. He

didn't even stop to see if I was OK."

Good's note taker was walking about 75 feet behind her and says the vehicle's driver didn't seem to be watching where he was going.

Good was not injured but said, "I thought I would be safe walking where I was supposed to be walking. That guy could have hurt my dog. What a shock!" The incident was reported to the dean of students and is being investigated.



Photo by Debbie Yamao

*Is it live or Memorex? A ghostly figure floats across a local field.*

## Club alert

This is a reminder to all KCC Student Clubs to file their annual Club Status Reports by the end of October. This report confirms that your club is active for the school year. If a report is not received, the club will be placed on an inactive status. Clubs on inactive status will not be approved for the use of the College's name, facilities or supplies, or conduct activities on the campus.

If you have any questions, please call ext. 577.

## Art contest

The Asia-Pacific Emphasis task force is establishing a new tradition for the International Festival: the display of student art works on the festival theme, including a competition for monetary prizes and certificates. Students are encouraged to enter. The theme of the upcoming festival is "Horizons: East and West," which will be held March 17, 18, and 19 of 1992.

## Is something bugging you?

The Student Congress wants to know what is bugging you, and will be at the cafeteria Oct. 28 through Nov. 1 from 11 a.m. to 1 p.m. to hear complaints. There is also a suggestion box in the Cafeteria, and students are encouraged to leave any complaints or suggestions there.

## Excellence is goal for UH campuses

Internationalizing education, housing students are top priorities

By Cedric Chong

What does the year 2000 hold for the University of Hawaii and its Community Colleges? Will student and faculty housing be available on Community College Campuses? Will computer literacy become a core requirement? Will classes be available around the clock seven days a week to accommodate today's student? Or will courses be held in the student's home via television? These are but a small fraction of the possibilities that may occur as a result of the University of Hawaii Master Plan.

The Plan was developed by the Board of Regents with help from Dr. Richard and Mildred Kosaki to help guide the University of Hawaii and the Community Colleges through the 1990's while improving its efficiency as a system.

At a recent Master Plan conference attended by students, faculty and administrators representing each campus in the system, various topics were discussed and the floor was opened to comments, suggestions, questions and opinions by all present, allowing concerns to be aired and addressed.

The plan is divided into seven major goals and through a series of reports over the next four weeks, these goals will be discussed further in detail. The Plan, however, is not a set plan. It is designed to change with the times. It will be an ongoing process and the recent conference designed to seek out the needs of all who will be affected was in itself a part of the plan. Michael Tagawa of the Faculty Senate, organized the conference and says, "This is just the beginning of the beginning."

The number one goal is "Excellence in Undergraduate Education." One possible improvement in this area is to make the student more aware of the world around him. Another improvement is increased accessibility to all UH. College campuses. A third possibility is increased scheduling of courses.

The world has become a much smaller place and interaction among countries has become increasingly important. As a result several years ago the University of Hawaii made foreign language a requirement. However, soon this may not be enough. New programs will have to be introduced and those presently in progress will have to be upgraded.

"Globalizing" the student might be accomplished by increasing the opportunity for study abroad. For example, the study group that went to China last summer to study Mandarin is a program that could be repeated and broadened. Another possibility might be to bring more foreign students to our campuses in exchange for U.H. students to study in those countries.

And how about recruiting a more culturally diverse faculty from the mainland and abroad? Hawaii's housing costs are among the highest in the nation while faculty salaries are not. Therefore, faculty housing may become a reality on community college campuses in order to attract the desired cross section of teachers.

Courses at KCC, for example, may take on a broader dimension, studying or even assisting local business. Imagine a Sales and Marketing class incorporating the international philosophy into its curriculum by fo-

cusing on Hawaii and how local businesses market their products in Japan.

By bringing the student out of the classroom and into the real world, he can more easily relate theory to its practical purposes and subsequently be better prepared for the real world upon graduation.

Many students, particularly those on the outer islands, may not be able to easily reach a college campus on a day to day basis. To solve this problem classes are presently being beamed from the KCC Campus to limited remote areas on the outer islands. With the advancement of two way communication though, your classroom might be anywhere a television set may be found.

Even if you can reach a college campus, it may not be until 9 p.m. after work and presently classes are not available during these hours. The present day student is no longer the 8 - 4 daytime student. Today the average student may have a full day time job or even a family to take care of. This means that he or she may only be available late at night or very early in the morning and the possibility of offering a wider variety of classes during these times will be looked at and seriously considered.

With every new program there are always kinks that need to be worked out. For example, if we bring in more foreign students, where will we house them? Will we share resources with U.H. Manoa and use their dormitory space? Will host families be solicited? What ever the answers, the Master Plan has been designed to work out these problems through an ongoing process that will attack them as they arise.



## Opinion Poll

Question and Photos by Brock Pemberton

### What would you like to get in your trick or treat bag?



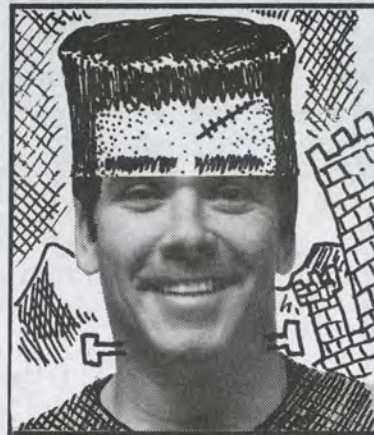
Lee Williams  
Liberal Arts

"Being a particular person, I would like a treat I never had and trick I never saw."



Skell A. Tonn  
Modeling Major

"I would like to find some flesh and blood. Also a suit of clothes would be appreciated."



Joe Meacham  
Liberal Arts

"I would like to get a Macintosh LC, so I don't have to spend hours and hours in the computer lab."



Matt Parcon  
Education

"A Stereo, CD player, motorcycle, guitar, Nintendo, B. Baldwin, skateboard, Reeboks, Van Halen Concert tickets, and world peace.... things that I didn't get last Christmas."

Kapio would like your opinion. Call us at 734-9120 or drop a note in our mailbox at I'lma 203, or come to B-1. Please leave us your name and major.

## How to pinpoint a career

By David R. Clarke

Are you a person that enjoys a creative job? Do you like using numbers? Are you stimulated by persuading people? Can you see details in the work you do? Do you catch on to job assignments quickly? These are the type of questions which make up The Hawaii Career Information Delivery System asks in order to direct a person to the kind of employment he or she is best suited for.

On Monday Oct. 21 Connie Reimer, KCC career counselor, conducted a workshop titled "How To Select A Major Based On Career Options." The purpose of the workshop was to expose students to the multitude of careers available in Hawaii.

Students were asked their preferences regarding different job and career characteristics. Each student was asked to respond to a survey and record his answers on an answer sheet. When the survey was complete everyone was given a four inch stack of computer punch cards and a long metal pin. Each card had a career imprinted on it.

The students were instructed to insert the metal pin through numbers which corresponded to survey question responses, and told to shake the stack of cards vigorously. Certain cards stayed connected to the pin and others dropped to the floor. The cards that remained connected to the pin represented career options which the student may have potential in.

Everyone was instructed to review ALL the cards which had fallen out, just in case a particular might still be of interest. These cards were then reinserted into the pile.

This procedure was repeated in accordance with all the questions on the answer sheet. After this was done each student had a small pile of 6-12 cards which designated the specific career choices that should be investigated as possible career choices.

This workshop was the third of a four part series. The last workshop will be held on Monday Oct. 28 from noon to 1:15pm in

Ilima 105. The title of the last workshop is Careers/Majors: How to Select A Major Based on Job Research. There will be instruction on how to use KCC and Community resources to gather information that

will assist students in making career decisions. All four workshops will be repeated during the Spring 1992 semester. Students who are undecided about their major or career are encouraged to attend.

### Join the College Bowl

College Bowl, the Varsity sport of the mind, has a long history on college campuses nationwide. This event has provided the arena for the fastest minds in college to demonstrate their resourceful skills under the fire of competition. At the same time, it has entertained millions.

Student Activities presents the Quiz/College Bowl at KCC. However, an activity of this size needs a co-partnership of the clubs/ organizations. You are invited to join us at an organizational meeting on Nov. 5 at Ohia 101 from 12:45 to 1:30 p.m.

The following is a sample of questions.

1. Its rates are \$20.95 for a single or \$25.95 for a double, but business is slow; sometimes all twelve cabins are vacant.

And those guests who check in tend not to check out. For 10 points -- name this fictional motel created by Alfred Hitchcock.

2. There are probably not very many fictional characters with their own real-life fan clubs. For 10 points -- what character inspired the Baker Street Irregulars?

3. In law it's the name for an accident caused by extraordinary natural forces, hence the injured party has no right to damages. For 10 points -- what is this three-word legal term?

4. Supreme Court Justice Potter Stewart's most cited opinion reads: "I can't define it, but I know it when I see it." For 10 points -- what was it that the justice declined to define?

Answers: 1. The Bates Motel, 2. Sherlock Holmes, 3. Act of God, 4. Pornography or Obscenity (or equivalent word).

## YOU MAY HAVE HIV

(Which leads to AIDS)

### TREATMENT IS AVAILABLE

(if you know that you have it)

FOR FREE, ANONYMOUS TESTING

(and more information)

...Please call the STD/AIDS Hotline

**922-1313**

### Witchcraft and spiritual healing

I am writing in response to the interview of Jo Anne De Lima. I was quite saddened to see someone who professes to be in the New Age Movement scorn the belief of others in the same movement. "Contrary to the belief that spiritual healing is aligned with Witchcraft..." Ha! Obviously she is unaware of the fundamentals of Witchcraft! Spiritual Healing plays a great role in this religion.

I can respect the fact that she may be ignorant in the ways of Witches, but I cannot allow someone to give misinformation on a religion they obviously know nothing about. The Wiccan community is under the belief that if we don't begin to take a stand against this type of misinformation the next right to go will be the right to worship as we see fit.

-Cat Foster

**Kapio**

4303 Diamond Head Rd.  
Honolulu, Hawaii 96816

Kapio is published every Tuesday by the Board of Student Publications of Kapiolani Community College. It is funded by student fees and advertising and reflects the views of its editors and writers who are solely responsible for its content. Circulation is 2000.

Kapio welcomes contributions to the paper. Editors reserve the right to edit all submissions for length, grammar and libel. Publication is not guaranteed.

Editor-in-Chief ..... Cheri-ann Shiroma  
Assistant ..... Gail McCracken  
Copy editor ..... Brock Pemberton  
Copy editing ..... Lyn Danning  
Reporters ..... Brenda Lea Valdez  
..... Cedric Chong, David Clarke  
..... Justin Cravalho, Mark Holladay  
..... Jerry Javier, Marcia Lee  
..... Ann Ravelo, Sabine Warrick  
Page layout ..... Sachiko Bratakos  
..... Alex Coloma, Chad Crosier  
..... Joel Lagud, Brian Takeshita  
Computer assistant ..... Darryl Chinen  
Cartoonists ..... Kert Wilson  
..... Reuben Young  
Photo editor ..... Debbie Yamao  
Photos and Veloxes ..... Randall Ajimine  
Adviser ..... Wini Au



# Halloween haunts and happenings...

By Gail Jeanne McCracken

Ghosts and goblins, mortals and spirits, demons and dragons, where will YOU be haunting this Halloween? The following is a listing of happenings in and around Honolulu to help guide your spirit towards the haunting of your choice. You don't want to be stuck at home at the bewitching hour when the clock strikes twelve. You could turn into a pumpkin and wind up on someone's Thanksgiving table.

**KCC Costume Contest**, Oct. 31 from 12:30 - 1:15 p.m. in the cafeteria, all students and faculty welcome, entries available in Ohia 101.

**John Dominis Restaurant**, 43 Ahui St., Oct. 31 starting at 7:30 p.m., dancing with "Nightwing" and costume contest, \$300 gift certificate for first prize. For information call 523-0955.

**Bishop Museum**, 1525 Bernice St., Oct. 31, 5:30 until 8:30 p.m., "Trick or Treat Street," a safe trick or treat environment for children accompanied by an adult, 200 decorated pumpkins on display and "Sharks - Fact and Fantasy" exhibit. Free admission.

Call 848-4129 for more information.

**First Baptist Church of Honolulu**, 1313 Pensacola Street, Oct. 31, Halloween Carnival, 6:30 until 9 p.m., featuring the "It's Not a Haunted House" house, games and candy. Free admission. Call 521-4708 for information.

**Calvary Chapel**, 1190 Nuuanu Avenue, Oct. 31, comedy concert "Isaac Air Freight" at 6 p.m. and 8:30 p.m. Child care available at early show only offering a Halloween alternative for children. Free admission. Call 524-0844 for information.

**Fast Eddie's Night Club**, 52 Oneawa Street, Kailua, Oct. 31, "Nightmares" Halloween Party, 8 p.m., live rock with Zig Zag, costume contest for Scariest, Most Original and Best Costume Over All, \$1000 cash and prizes, ages 21 and over. \$5 cover charge. Call 261-8561 for information.

**Hula's Bar**, 2103 Kuhio Avenue, Oct. 31, "Hula's Exposed: Tabloid Halloween 1991!" 8 p.m., costume contest with over \$1000 cash and prizes, \$400 for best tabloid theme costume and \$200 to best non-theme costume. \$10 advance sale tickets good for front-of-the-line admission. 21 and over.

Call 926-2191 for information.

**Jazz Cellar**, 205 Lewers Street, Oct. 31, Halloween Party with live rock from Open Fire and Point Blank, costume contest, prizes, ages 18 and over, cover charge. Call 923-9952 for information.

**Pink's Garage**, 955 Waimanu Street, Ward area, Oct. 31, Halloween Midnight Rock Bash, open at 11 p.m., live rock from Giomi and The Noiz, costume contest, ages 18 and over. \$5 in advance and \$7 at door. Call 533-2512 for information.

**Pure Platinum**, 2901 Kuhio Avenue, Oct. 31, "Wild, Wild West Rockin' Halloween Bash" with live rock from Calamity Jayne, costume contest with \$500 cash prize, door prizes and games. \$25 cover charge includes admission, two drinks, pupus and live entertainment. Ages 21 and over. Call 922-5566 for information.

**Wave Waikiki**, 1877 Kalakaua Avenue, Oct. 31, "Halloween Beneath the Wave," get wet and wild in their undersea world, live rock with Eden, costume contest with over \$1300 cash and prizes, \$500 for best theme contest and \$300 for best non-theme contest. Doors open at 9 p.m. \$10 advance tickets

good for front-of-the-line admission. Ages 21 and over.

**Restaurant Row**, Oct. 31, "Let's Get Ugly" costume contest for adults starting at 8 p.m. with finals at 11 p.m., first prize is vacation and dinner for two at Royal Hawaiian Hotel with limousine transportation and \$94 cash.

**McCully Shopping Center**, corner McCully and Kapiolani Boulevard, Oct. 31, KPOI radio personalities broadcast live and judge theme costume contest, "Show Us How Scary You Look When You Wake Up," 5:30 until 9:30 a.m.

**Central YMCA**, 401 Atkinson Drive, Oct. 31, Halloween Aerobic Jam Session with costume contest and door prizes, 4:30 - 6:30 p.m., call 941-3344 for information.

**Koko Marina Shopping Center**, Hawaii Kai, Oct. 30 - 31, Ghost-Moon Castle Haunted House, across from Ace Hardware, 6 until 9 p.m. \$2 admission to benefit American Heart Association.

**Hawaiian Waikiki Beach Hotel**, 2570 Kalakaua Avenue, Oct. 31, Haunted House from 5 until 10 p.m. \$3 admission. Costume contest at 10 p.m. in Captain's Lounge, winners announced at midnight, first prize is three day, two night stay at Kona Surf Resort (airfare and rental car included). Call 922-2511 for information.

**Dole Cannery Square**, Oct. 29 - 31, Haunted House featuring seven chambers of horror, food and games, 6 until 11 p.m., \$3 admission to benefit March of Dimes.

**Banditos Cantina**, 98-151 Pali Momi Street, Oct. 31, "Nightmare on Pali Momi Street," costume contests with \$500 prize, music by Brian and the Wild Burritos, jalapeno eating contest, 8 p.m. \$2 donation to benefit Pearl City and Aiea youth organizations. Call 488-8888 for information.

**Kahala Hilton**, Maile Lounge, Oct. 31, music with Kit Samson's Sound Advice from 9 p.m. until 1 a.m., costume contest at 11 p.m., first prize is two nights stay at Kahala Hilton. Call 734-2211 for information.

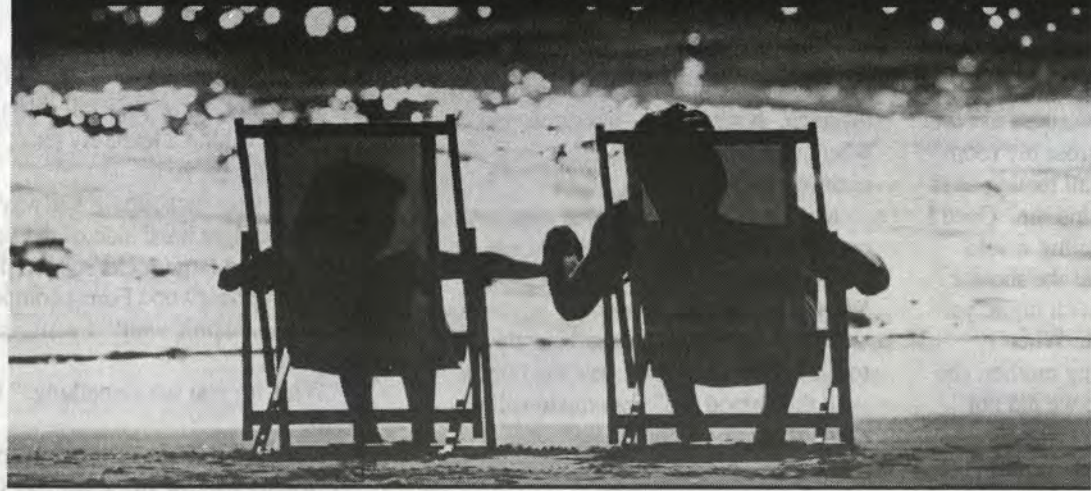
**Diamond Head Chapel**, KCC campus, Oct. 31, Obake Tales of Japan, Glen Grant tells tales of Japanese ghosts, 10 until 11 p.m. Free admission. Call 734-9211 for information.

**Punahou Academy**, Dillingham Auditorium, Oct. 31 - Nov. 3, "Dark of the Moon" fall play, 7:30 p.m. (Nov. 3 at 2:30 p.m.). \$5 admission, \$2 for students with ID. Call Steve Wagenseller, director, for information 944-5747.

**Special Student Services**  
needs readers and notetakers  
for disabled students  
Contact Karen Kane  
Ilima 101  
734-9552

**BECOME A PERSONAL  
FITNESS TRAINER**  
ISMA Certification Seminar  
(International Sports Med. Assn.)  
Sat., Nov. 2 (8:30 a.m.-4:30 p.m.)  
Iliahi Rm. 105  
Cost: \$90.00  
For more information,  
call Larry Fee, 956-7208

TIAA-CREF on SOUND RETIREMENT INVESTING



## WHEN PLANNING FOR THE FUTURE, SOME PEOPLE WANT EVERYTHING.

*(We think that's perfectly reasonable.)*

Retirement should be everything you dreamed it would be. With good health, you may spend a quarter of your life doing the things you've always dreamed of — like travelling the world, starting your own business, or playing tennis twelve months a year.

### RETIRE YOUR WAY, WITH TIAA-CREF SRAs.

TIAA-CREF Supplemental Retirement Annuities are a unique way for members of the education and research communities to save extra money for their retirement years. Through tax-deferred savings, TIAA-CREF SRAs can help provide the extras that will make your retirement truly enjoyable. They will supplement your basic pension and Social Security in retirement, and they offer real benefits now:

- The benefits of tax deferral.
- A broad range of allocation choices.
- NO sales charges.

- Among the lowest expenses in the insurance and mutual fund industries.\*
- A variety of ways to receive income, including lifetime retirement income, payments over a fixed period, or as cash.

### TIAA-CREF CAN HELP MAKE YOUR DREAMS COME TRUE.

With the help of TIAA-CREF, retirement can be your chance to look after yourself the way you've always wanted. After all, nobody deserves it more.

### SEND NOW FOR A FREE RETIREMENT KIT

Mail this coupon to: TIAA-CREF, 101 California St., Suite 4080, San Francisco, CA 94111. Or call a Participant Counselor at 1 800-842-2007.

Name (Please print) \_\_\_\_\_

Address \_\_\_\_\_

City \_\_\_\_\_ State \_\_\_\_\_ Zip Code \_\_\_\_\_

Institution (Full name) \_\_\_\_\_

Title \_\_\_\_\_ Daytime Phone ( ) \_\_\_\_\_

TIAA-CREF Participant ☐ Yes ☐ No If yes, Social Security # \_\_\_\_\_



Ensuring the future  
for those who shape it.™



## MAN IN RED GHOSTLY VISITOR

By Cheri-ann Shiroma

First of all, let me explain that my aunt is a bit of a clairvoyant. She has witnessed the infamous fireballs, glowing orbs of blue light usually associated with cemeteries. Also, she has accurately read fortunes in cards and palms for many years. Apparently, she saw something she did not want to see one day, because she steadfastly refuses to foretell futures anymore. But she does tell some really good ghost stories.

My aunt used to own a flower shop on Beretania Street, in the spot that is now the BMW dealership showcase. She used to sleep in a loft above the shop, in an oddly shaped room with a large antique mirror standing in one corner. One evening, she awoke with a start, not knowing why she had gotten up so suddenly. She turned her head to find an old Chinese man peering at her from behind the mirror. The man had a long white beard and wore the red jacket common to Chinese people in an earlier era. He slowly raised his hand and beckoned to my aunt with one finger. My aunt says she remembers his nail most of all: a long, curved nail shaped like a sickle motioning for her to go to him. Finally coming out of shock, my aunt screamed and the apparition disappeared. She never slept in the loft again.

## CRYING BABIES

By Mark D. Holladay

Seven people climbed across the rocks at Crying Babies in Kahala, an area that is reportedly haunted by the souls of babies abandoned by their mothers in ancient times. This small group was messing around in the isolated blackness for lack of something better to do.

Suddenly, one of them noticed something whitish against the dark background. They began to joke about it as two of them moved closer to investigate. One of them began to throw rocks at the glowing object.

As they approached the shadowy form, they saw that it was a woman with long flowing robes. They watched the shimmering figure float slowly across the rocks, rise into the trees and fade away into nothingness.

It was sight so unusual that most people do not believe the group when they tell their story. But I believe that the sincerity in their eyes and voices proves that they believe it, and that it was an experience they will never forget.

## THE HAUNTING

By Marcia Lee

The local newspaper described the watermelon growing in her yard as being "blood red" on the inside. I shuddered upon reading that, and thought how close to the truth they came without even knowing.

I turned 17 the summer we moved into the new house on Kaumakani Street. They say the name means "ride the wind," and little did we know what those winds brought with them.

I did not think it odd at first that a strange feeling followed me whenever I got up in the middle of the night to use the bathroom. I would walk across my room to the light switch on the wall feeling as if someone were walking behind me. Once I switched on the light the feeling would disappear. I would also hear the shower door clicking open and shut all night, yet the door was always closed. When I mentioned these things to my mother, she said I must be dreaming, so we did not give them much credit.

But other strange events began to occur. While I slept I felt as if I were suffocating and I could not move or wake up from this nightmare. I would start to recite The Lord's Prayer and on the second recital the feeling would lift and I would awaken. At other times, I would wake in the middle of the night and see silhouettes of a beautiful young woman on my ceiling. I would turn over and go to sleep, but would then turn back to see if they were really there, and they always were.

One day, a fellow student ran me over with his motorcycle and broke my right leg. A few weeks later, a dog attacked my brother and took a chunk out of his right leg. The final incident occurred after my sister had spent a weekend at our house. The following week she sprained her right ankle.

The coincidences scared my mother enough to tell me that my brother had been seeing skulls on his ceiling all along. She could not make sense of this and had no idea what to do about it.

One morning my mother distinctly heard my brother say, "Ma, Daddy had a heart attack." She turned to question him, but he was fast asleep. That day, my mother and I returned home from shopping, and when we entered the house my brother looked up at us and said the exact words she had heard him say that morning.

My uncle introduced my mother to his neighbor, who had lived in the area when it was still farms and old Hawaiian homes. She said that when she lived there, her infant daughter would cry until she was blue and run her eyes along the ceiling as

if in a trance, and the only thing they could do was to slap her out of it.

She also told my mother about a fire that occurred in our area years earlier. A couple and their two-year-old daughter perished in their burning home. For years afterward, neighbors in the area reported hearing the fire as if it was happening over and over again. She also gave my mother the address where the fire occurred.

A friend and I skipped school the next day and went to the land office to look at old maps. We copied the mileage from the maps and drove home to measure the distance. It was exact--our house stood where a young family had met their untimely deaths.

My parents decided it was time to get out. We braved it out in that house a couple more months until it was sold. Within six months of moving in, the new owner's husband had a heart attack. They, too, sold the house and now the family with the "blood red" watermelons live there. Happily, I hope.

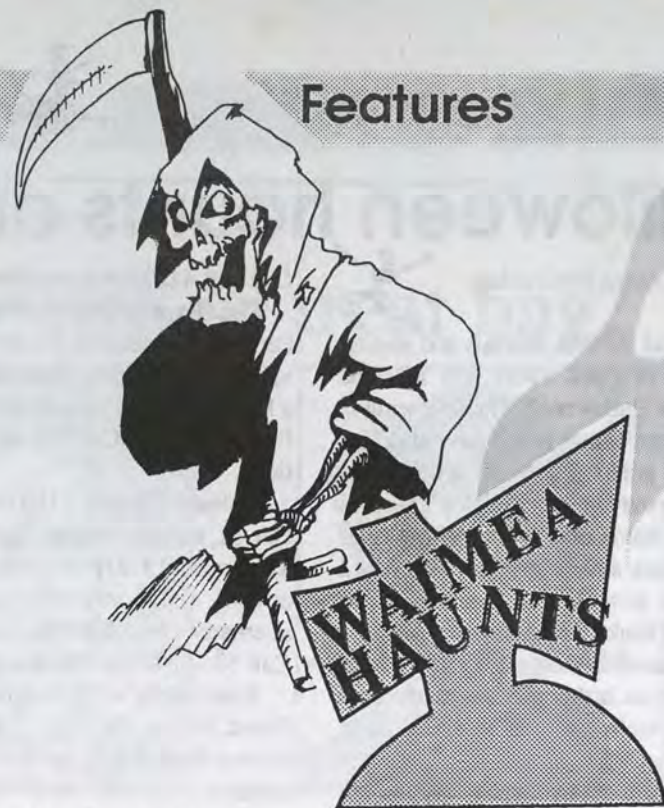
## FLOATING CHILD

By Justin Cravalho

In was about 10 p.m. and Mrs. Gifford had been working in her office in Newell Hall on the Saint Louis campus. She gathered up her belongings and turned off the light, making the hall extremely dark. Gifford was not alarmed by this because she had stayed late many times and was accustomed to walking through the blackness.

As she reached the end of the hall, she heard the sound of a laughing child. She stopped for a moment and listened, but there was no sound. She shrugged it off, attributing it to her own imagination. As she began to walk, she heard the laughter again, this time accompanied with the sound of running feet. Fear struck her and she hurried on towards the entrance.

As she neared the entry way, she could make out the shape of a figure staring at her. She moved closer and saw that it was a little boy dressed in a uniform like that worn at Saint Louis in the 1930s. The boy smiled innocently at Gifford. She could not see his feet, and as she looked closer she saw that the child was floating in mid-air. She was so afraid that all she could do was stand there in horror. The child smiled at her again and disappeared. She stood there for a moment, then hurried for the entrance.



By Ann Ravelo

Early in July 1991, during a large full moon, a friend and I thought it would be great to join along in the Moonlight Walk offered by Waimea Falls Park. We have all heard that Waimea has a tremendous amount of "mana." Many famous ghost stories originated there, from the menhune house on the corner to the strange occurrences and deaths in the pond. I learned that night that a heiau rests on the top of the right hillside.

The night was clear and the moon was big and bright, showing itself throughout the night. Taking a leisurely pace, we took pictures for fun.

On the way back, about halfway, an area on the right hand side of the valley, with trees and large rocks scattered resembling Sherwood Forest compelled me to stop. "Shhh, wait!" I whispered to my friend.

"Why, do you see something?" he asked.

"No, but I feel something," I replied.

Looking into the trees, waiting for something to happen, I felt a strong presence around me, like someone watching over me. For some strange reason, I felt overjoyed, happy and safe.

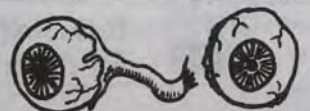
I came to the conclusion that it was my imagination. I wanted to feel the warmth of the valley. You see, my brother passed away a year and a half ago in Moanalua Valley, and I still believe his spirit roams the valleys and hill sides.

A few days later, my friend called to say he had the pictures developed, and there is a picture of me that I just had to see.

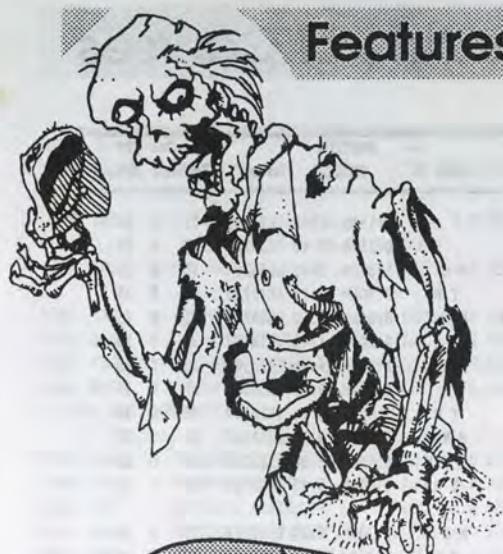
He couldn't describe it, but said his friends all agreed it was pretty spectacular. Upon receiving the picture, I myself found it difficult to believe. The shot is full length and I'm posing for the camera in a usual way. What makes this unbelievable is a white mist in front of me, the illusion resembles a king holding a staff at an angle. All possibilities are taken into account; there were no torch lights or cigarette smoke when this was photographed.

Since then, I've tucked the photograph away.

For the sole purpose of this article, I wished to reproduce it so you can be the judge. The picture has disappeared. After much searching I asked my friend for the negative. He has since found the other pictures, but the negatives are missing. I have a feeling, this image... is shy.







## GHOSTLY GUESTS

By Jerry Javier

We'd all heard the stories before. We were told about how our Kamehameha dorm was once a makeshift hospital during WWII, filled with pain, agony, and death of the many men who took their own lives during their stay there. And how they never left. But those were only stories, we'd told ourselves... only stories.

There had been stories all year of ghostly shadows roaming about during the night, lights turning off and on by themselves, and ghostly conversations taking place in the very early morning hours. They were all dismissed, however, usually as high school pranks. And it wasn't until the last week of classes that we were finally given a taste of the ghostly truth.

It was a windy Thursday night up on the hills of Kapalama. We'd had a long day of exams, and nearly everyone had fallen asleep unusually early. The concrete hallway echoed with the sounds of window screens banging against the walls in the bedrooms which they were nailed to.

The screams were soft at first, as if they were coming from a long distance. I had just finished the last of my studies, and was busy setting my alarm clock. It read, 1:31 a.m. As I reached to turn off my night light, I noticed the sounds again. They were closer now. Much closer, in fact. I decided to investigate. (A lot of the younger boys liked to have "social gatherings" after lights out, and many times made more noise than we could stand.)

By the time I reached my doorway, the noises were already in the hallway. I couldn't make out what it was—a kind of hiss, with a high pitched shrill about as loud as a normal voice. When I opened the door, the sounds stopped. I peered cautiously into the hall. There was nothing.

Dumbfounded. I closed my door. Soon after, another scream raced through the hall. This time it was real. It traveled sharply for only an instant, then died. I realized it was coming from the room next to mine.

The loud scream had already awakened the two boys across the hall, and they were out of their rooms when I reached my doorway for the second time. They too had their minds glued to room 201. The room belonged to a quiet young freshman. We hardly really knew him, but he was our friend, never-the-less. I gathered enough courage to peer through his window.

The lightpost outside allowed me to see into his room. There he was, flat on his back on the ground. His eyes were wide open and they stared upwards, as if searching for something that wasn't quite visible. No sounds were coming from his mouth, except for the loud gasps of breath which he seemed to struggle for. His long arms were stretched out



above him into the air, and his legs were pushing vigorously along the floor, as if he were trying to move but could not.

I yelled out to him. The door was locked and his screens were shut tight. The hall lights were on now and I could see his face clearly. His eyes stared endlessly into mine with a helplessness that I had never seen before. They told me everything: he was awake, but somehow paralyzed by an invisible force. Then he closed them and gave another, softer scream. His arms came crashing down on his chest. Something was making him do it. His face squinted in an effort to fight it. After a few minutes, his body went limp, and he fell into an instant sleep. The entity was gone.

When we got into the room it took several minutes to wake him.

"What happened?" we asked. He remembered nothing.

A few days later, a school nurse who had worked there since the war explained that room 201 was the site of two suicides and one hospital death.

"This is nothing new," she said. "they will always be there."

School was over then, and everyone went home for the summer. The boy never returned to the dorms. Room 201 was left open for another student who dared to venture up onto the hills of Kapalama Heights.

## GOODBYE, ROBERT

By Debbie Yamao

"It was about 6 a.m. when I heard the curtains move in the living room," Esther Kishimoto recalls. Kishimoto explains that she has curtains that can be pulled up and down like blinds.

"I thought nothing of it at the beginning, but the sound continued for awhile," she says. "So I went out into the living room to check. There was no one there, and the curtains were as exactly as I left it."

Kishimoto put this episode in the back of her mind and did not discuss it with anyone but her husband. Then one week later she received a phone call. Her younger brother, Robert, whom she was very close to, died. The news came from a friend on the mainland who found the body. Robert had died the morning of Kishimoto's episode. She believes her brother came to her to say "Goodbye."

By Brock Pemberton

I had been living in Hawaii for five years. My friend Mike and I were in need of a cheap apartment to rent in town. A friend told me he knew of one on Liholiho Street. We went to the address given and inquired with the manager. He seemed pleased and gave us the key to apartment 20. "On the top floor, all the way in the back," he said. We looked the one room apartment over quickly and signed the rental agreement. Within an hour we had moved in.

The place appeared as if the former tenants had left in a hurry. There was linen still on the bed, dishes in the sink and there was even a TV set that worked.

"They were drug dealers and had to leave in a hurry," Eddie, the manager, told us. He said he would give us a discount on the first month's rent if we cleaned it ourselves. The residents of the three story building were friendly enough, and some even invited us to dinner during the first week we were there.

They would always ask, "So, how you like livin' in Apartment 20?" At the time I liked living there and thought nothing about their inquisitive questioning. As time went by, I thought differently.

We had been living there for about a month and had gotten to know most of the tenants in the 12 unit building. They would always invite us to their apartments but would rarely visit ours. One evening, as I was watching TV with a few friends in the apartment below ours, I heard the sound of footsteps coming from above. I jumped up and headed for the door.

"Wait! Don't go up there! It will go away! Nobody's there!" my friends said.

"Somebody's in my apartment, and Mike ain't there. Come on!" I yelled as I ran out the door and up the stairs to my place. The only way down was the stairs I ran up, but when I entered my locked apartment there was nobody there. I went back downstairs. My friends asked me if I saw anything.

"No! There ain't nobody there," I said. "You' lucky," Bob said.

"But I heard somebody walking and there ain't no other way out but down the stairs I ran up."

"People always hear noise up there. Some people see things too," Bob said.

"What are you talking about, see things," I asked.

Bob told me about Apartment 20. It had been empty more then occupied during the past five years that they had been living in the building. Nobody had lived in Apartment 20 for more than three or four months at a time because it was haunted. I thought they were crazy or just

trying to play a joke on me.

After a while, I went upstairs. The time was about 10:30 and I had forgotten about the footsteps on the ceiling. Mike hadn't come home yet. I went out to the lanai where my bed was and fell asleep. I awoke when I heard a noise from Mike's bedroom.

"Did you bring anything to eat?" I yelled hopefully. I got no answer.

"Hey man, save some for me." Still I got no answer.

I got up and walked toward the bedroom and noticed that there was no light on. "Did you get lucky and pick up some company?" I asked. Still I got no answer.

By now I figured that I had been hearing things, so I went into the kitchen to get a beer. As I stood leaning against the refrigerator, drinking my beer, I noticed a bluish glow coming from Mike's room. I then remembered what Bob had told me earlier that night and I froze with the beer can at my lips. Finally, after what seemed like hours, I slowly started to walk toward the bedroom. The light that filled the doorway appeared strangely alive. My heart was bursting with fear as I looked into the room. In the far corner, I saw what looked like a glowing, undulating blue cloud, about three feet in diameter, floating at eye level. I was deathly afraid, but for some reason, I also had the feeling that this thing was lost or looking for something. I reached for the light switch. As the light came on, the "thing" disappeared.

Just then my roommate came home. I told him what had happened and what Bob had told me earlier. He said he wanted to see it and turned out the lights. There was nothing.

The blue "thing" never returned, but the sound of footsteps could be heard about once a month. I always felt a strange kind of kinship towards whatever it was I had seen, and I actually hoped it would appear again. I talked to the owner of the building one day and told him about my experience. He told me that the building had been built on what used to be an old Hawaiian graveyard and Apartment 20 was the last apartment to be finished. The blue light and footsteps had been seen, heard and talked about since the first tenant moved into Apartment 20.

About four years later, I had all but forgotten about Liholiho street. I was in a bar when I overheard a conversation between a guy and his friend. He was talking about the apartment he and his girlfriend had just moved from. He said his girlfriend had seen a blue ghost in the bedroom. I asked him what the address of the apartment was. It was good old Apartment 20.





Class Crs Code Dept	CRSNO Title	LEC LAB	UNIT INSTRUCTOR	DAYS	MEETING TIME (S)	Room	Max Cur STS Enr Enr REM	Class Crs Code Dept	CRSNO Title	LEC LAB	UNIT INSTRUCTOR	DAYS	MEETING TIME (S)	Room	Max Cur STS Enr Enr REM
5200 ACC	24 PRIN OF ACC I	LEC	3.0 VAN GIESON	T R	11:00AM-12:15 ILIA107	35	0 35	8202 BUS	20 INTRO TO BUS	LEC	3.0 JACOBS	S	10:15AM-1:05 ILIA105	35	0 35
5201 ACC	24 PRIN OF ACC I	LEC	3.0 KIMURA	M W F	9:00AM-9:50 ILIA103	35	0 35	5225 BUS	25 ENTREPRENEURSHIP	LEC	3.0 KONDO	S	10:15AM-12:45 ILIA106	35	0 35
5202 ACC	24 PRIN OF ACC I	LEC	3.0 VAN GIESON	T R	8:00AM-9:15 ILIA107	35	0 35	5227 BUS	55 COMP PROB IN BUS	LEC	3.0 SHINOKI	M W	1:30PM-2:45 ILIA107	35	0 35
5203 ACC	24 PRIN OF ACC I	LEC	3.0 KIMURA	M W F	10:00AM-10:50 ILIA103	35	0 35	5228 BUS	55 COMP PROB IN BUS	LEC	3.0 KIMURA	T R	9:30AM-10:45 ILIA107	35	0 35
5204 ACC	25 PRIN OF ACC II	LEC	3.0 KIMURA	T R	5:30PM-6:45 ILIA103	35	0 35	5229 BUS	55 COMP PROB IN BUS	LEC	3.0 VAN GIESON	M W F	8:00AM-8:50 ILIA107	35	0 35
5205 ACC	25 PRIN OF ACC II	LEC	3.0 VAN GIESON	M W F	10:00AM-10:50 ILIA107	35	0 35	5230 BUS	55 COMP PROB IN BUS	LEC	3.0 SHINOKI	T R	12:30PM-1:45 ILIA107	35	0 35
5206 ACC	26 PRIN OF ACC III	LEC	3.0 HINCHEY	T R	7:00PM-8:15 ILIA104	35	0 35	5231 BUS	55 COMP PROB IN BUS	LEC	3.0 SHINOKI	M W	5:30PM-6:45 ILIA107	35	0 35
5207 ACC	32 PAYROLL ACC	LEC	3.0 KIMURA	T R	11:00AM-12:15 ILIA103	35	0 35	8203 BUS	55 COMP PROB IN BUS	LEC	3.0 UCHIDA	S	10:15AM-12:45 ILIA107	35	0 35
5208 ACC	34 INCOME TAX PREP	LEC	3.0 VANAIKSDALE	M W F	9:00AM-9:50 ILIA105	35	0 35	5232 BUS	56 ADV COMP IN BUS	LEC	3.0 SHINOKI	T R	2:00PM-3:15 ILIA107	35	0 35
5209 ACC	34 INCOME TAX PREP	LEC	3.0 HINCHEY	T R	5:30PM-6:45 ILIA104	35	0 35	5233 BUS	70 HUMAN RELATIONS	LEC	3.0 DAVIS	M W F	8:00AM-8:50 ILIA105	35	0 35
5210 ACC	36 COST ACCOUNTING	LEC	3.0 VAN GIESON	M W F	11:00AM-11:50 ILIA107	35	0 35								
5211 ACC	40 INTER ACC	LEC	4.0 IKEZAKI	MTWRF	11:00AM-11:50 ILIA104	35	0 35	5820 CHEM	100 CHEM + MAN	LEC	3.0 JENSEN	M W F	1:30PM-2:20 0933104	35	0 35
5212 ACC	50 USING COMP ACC	LEC	3.0 DOOLEY	M W F	11:00AM-11:50 ILIA128	30	0 30	5821 CHEM	100 CHEM + MAN	LEC	3.0 DONALDSON	T R	9:30AM-10:45 0933103	35	0 35
5213 ACC	55 COMP SPDRSHT-ACC	LEC	3.0 DOOLEY	T R	8:00AM-9:15 ILIA128	30	0 30	5822 CHEM	101 GENL, ORG&BIOCHEM	LEC	3.0 JENSEN	M W	10:30AM-11:45 0933103	35	0 35
5214 ACC	55 COMP SPDRSHT-ACC	LEC	3.0 DOOLEY	M W	7:00PM-8:15 ILIA128	30	0 30	5823 CHEM	101 GENL, ORG&BIOCHEM	LEC	3.0 JENSEN	M W	12:00PM-1:15 0933104	35	0 35
5215 ACC	93V COOPERATIVE EDUC	LEC	3.0 IKEZAKI	W	12:00PM-1:15 ILIA104	15	0 15	5824 CHEM	151 ELEM SURV CHEM	LEC	3.0 DAVIS	T R	5:30PM-6:45 0933104	35	0 35
5216 ACC	201 ELEM ACC I	LEC	3.0 VANAIKSDALE	M W F	8:00AM-8:50 ILIA104	35	0 35	5825 CHEM	151 ELEM SURV CHEM	LEC	3.0 DAVIS	M W	12:00PM-1:15 0933104	35	0 35
5217 ACC	201 ELEM ACC I	LEC	3.0 IKEZAKI	M W F	9:00AM-9:50 ILIA104	35	0 35	5826 CHEM	151 ELEM SURV CHEM	LEC	3.0 DAVIS	M W	5:30PM-6:45 0933104	35	0 35
5218 ACC	201 ELEM ACC I	LEC	3.0 VANAIKSDALE	M W F	11:00AM-11:50 ILIA103	35	0 35	5827 CHEM	161 GENL CHEM I LAB	LEC	3.0 DONALDSON	M W F	9:00AM-9:50 0933104	35	0 35
5219 ACC	201 ELEM ACC I	LEC	3.0 IKEZAKI	T R	8:00AM-9:15 ILIA104	35	0 35	5828 CHEM	161 GENL CHEM I LAB	LEC	3.0 DONALDSON	M W F	11:00AM-11:50 0933104	35	0 35
5220 ACC	201 ELEM ACC I	LEC	3.0 DOOLEY	T R	9:30AM-10:45 ILIA104	35	0 35	5829 CHEM	161 GENL CHEM I LAB	LEC	3.0 DONALDSON	T R	8:00AM-9:15 0933103	35	0 35
5221 ACC	201 ELEM ACC I	LEC	3.0 KARR	T R	12:30PM-1:45 ILIA104	35	0 35	5830 CHEM	161 GENL CHEM I LAB	LEC	3.0 DONALDSON	T R	12:30PM-3:20 0933103	20	0 20
5222 ACC	201 ELEM ACC I	LEC	3.0 FIUST	M W	5:30PM-6:45 ILIA103	35	0 35	5831 CHEM	161 GENL CHEM I LAB	LEC	3.0 VOYCE	M W F	8:00AM-8:50 0933103	35	0 35
5223 ACC	201 ELEM ACC I	LEC	3.0 KARR	S	1:00PM-3:30 ILIA104	35	0 35	5832 CHEM	162 GENL CHEM II LAB	LEC	3.0 VOYCE	F	9:00AM-11:50 0933103	20	0 20
5224 ACC	201 ELEM ACC I	LEC	3.0 KARR	S	1:00PM-3:30 ILIA104	35	0 35								
5225 ACC	201 ELEM ACC I	LEC	3.0 KARR	S	1:00PM-3:30 ILIA104	35	0 35	5600 CHNSE	50 CONVRM MANDARIN		3.0 FUJITANI	T R	2:00PM-3:15 KAU1114	25	0 25
5226 ACC	201 ELEM ACC I	LEC	3.0 KARR	S	1:00PM-3:30 ILIA104	35	0 35	5601 CHNSE	102 ELEM MANDARIN II		4.0 FUJITANI	MTWRF	9:00AM-9:50 KOA 103	25	0 25
5227 ACC	201 ELEM ACC I	LEC	3.0 KARR	S	1:00PM-3:30 ILIA104	35	0 35	5602 CHNSE	202 INT MANDARIN II		4.0 FUJITANI	MTWRF	10:00AM-10:50 KOA 103	25	0 25
5228 ACC	201 ELEM ACC I	LEC	3.0 KARR	S	1:00PM-3:30 ILIA104	35	0 35								
5229 ACC	201 ELEM ACC I	LEC	3.0 KARR	S	1:00PM-3:30 ILIA104	35	0 35	5603 COMUN	145 INTERPER COMMUN	LEC	3.0 KASHIWADA	M W F	9:00AM-9:50 I 004	25	0 25
5230 ACC	201 ELEM ACC I	LEC	3.0 KARR	S	1:00PM-3:30 ILIA104	35	0 35	7600 COMUN	145 INTERPER COMMUN	LEC	3.0 HOLLAND	T R	5:00PM-6:15 KALI107	25	0 25
5231 ACC	201 ELEM ACC I	LEC	3.0 KARR	S	1:00PM-3:30 ILIA104	35	0 35								
5232 ACC	201 ELEM ACC I	LEC	3.0 KARR	S	1:00PM-3:30 ILIA104	35	0 35	5527 DANCE	122 BALLET II	L-L	3.0 ROWE	M W F	3:00PM-4:15 MAIL101	20	0 20
5233 ACC	201 ELEM ACC I	LEC	3.0 KARR	S	1:00PM-3:30 ILIA104	35	0 35	5528 DANCE	131 MOD DANCE I	LEC	3.0 WISNOSKY	M W F	1:30PM-2:45 MAIL101	20	0 20
5234 ACC	201 ELEM ACC I	LEC	3.0 KARR	S	1:00PM-3:30 ILIA104	35	0 35	5529 DANCE	132 MOD DANCE II	LEC	3.0 WISNOSKY	M W F	4:30PM-5:45 MAIL101	20	0 20
5235 ACC	201 ELEM ACC I	LEC	3.0 KARR	S	1:00PM-3:30 ILIA104	35	0 35	5530 DANCE	150 INTRO TO DANCE		3.0 WISNOSKY	M W F	12:00PM-1:15 MAIL101	25	0 25
5236 ACC	201 ELEM ACC I	LEC	3.0 KARR	S	1:00PM-3:30 ILIA104	35	0 35	5531 DANCE	212 ANC HAW DAN	LAB	1.0 KEAULANA	T R	3:30PM-4:30 MAIL101	20	0 20
5237 ACC	201 ELEM ACC I	LEC	3.0 KARR	S	1:00PM-3:30 ILIA104	35	0 35								
5238 ACC	201 ELEM ACC I	LEC	3.0 KARR	S	1:00PM-3:30 ILIA104	35	0 35	5000 DENT	70 ESSENTIAL DENT		3.0 TANI	M W F	11:00AM-11:00 KAU1114	16	0 16
5239 ACC	201 ELEM ACC I	LEC	3.0 KARR	S	1:00PM-3:30 ILIA104	35	0 35								
5240 ACC	201 ELEM ACC I	LEC	3.0 KARR	S	1:00PM-3:30 ILIA104	35	0 35	5001 DENT	70L ESSENTL DENT LAB		3.0 TANI	T	8:00AM-8:50 KAU1113	0	0 0
5241 ACC	201 ELEM ACC I	LEC	3.0 KARR	S	1:00PM-3:30 ILIA104	35	0 35								
5242 ACC	201 ELEM ACC I	LEC	3.0 KARR	S	1:00PM-3:30 ILIA104	35	0 35	5002 DENT	70L ESSENTL DENT LAB		3.0 STAFF	M W F	1:30PM-4:00 KAU1113	0	0 0
5243 ACC	201 ELEM ACC I	LEC	3.0 KARR	S	1:00PM-3:30 ILIA104	35	0 35								
5244 ACC	201 ELEM ACC I	LEC	3.0 KARR	S	1:00PM-3:30 ILIA104	35	0 35	5003 DENT	72 DENT MATERIALS		1.0 TANI	T	12:00PM-1:00 KAU1114	0	0 0
5245 ACC	201 ELEM ACC I	LEC	3.0 KARR	S	1:00PM-3:30 ILIA104	35	0 35								
5246 ACC	201 ELEM ACC I	LEC	3.0 KARR	S	1:00PM-3:30 ILIA104	35	0 35	5004 DENT	72L DENT MAT LAB		1.0 TANI	T	1:10PM-3:40 KAU1113	0	0 0
5247 ACC	201 ELEM ACC I	LEC	3.0 KARR	S	1:00PM-3:30 ILIA104	35	0 35								
5248 ACC	201 ELEM ACC I	LEC	3.0 KARR	S	1:00PM-3:30 ILIA104	35	0 35	5005 DENT	74 DENTAL SCIENCE		3.0 TANI	T	9:00AM-10:50 KAU1114	0	0 0
5249 ACC	201 ELEM ACC I	LEC	3.0 KARR	S	1:00PM-3:30 ILIA104	35	0 35								
5250 ACC	201 ELEM ACC I	LEC	3.0 KARR	S	1:00PM-3:30 ILIA104	35	0 35								
5251 ACC	201 ELEM ACC I	LEC	3.0 KARR	S	1:00PM-3:30 ILIA104	35	0 35	5006 DENT	76 DENT RADIOGRAPHY		1.0 HIGA	R	12:30PM-1:30 KAU1114	0	0 0
5252 ACC	201 ELEM ACC I	LEC	3.0 KARR	S	1:00PM-3:30 ILIA104	35	0 35								
5253 ACC	201 ELEM ACC I	LEC	3.0 KARR	S	1:00PM-3:30 ILIA104	35	0 35	5007 DENT	76L RADIOGRAPHY LAB		1.0 HIGA	R	8:00AM-11:30 KAU1113	0	0 0
5254 ACC	201 ELEM ACC I	LEC	3.0 KARR	S	1:00PM-3:30 ILIA104	35	0 35								
5255 ACC	201 ELEM ACC I	LEC	3.0 KARR	S	1:00PM-3:30 ILIA104	35	0 35	5008 DENT	76L RADIOGRAPHY LAB		1.0 HIGA	R	1:40PM-5:10 KAU1113	0	0 0
5256 ACC	201 ELEM ACC I	LEC	3.0 KARR	S	1:00PM-3:30 ILIA104	35	0 35								
5257 ACC	201 ELEM ACC I	LEC	3.0 KARR	S	1:00PM-3:30 ILIA104	35	0 35	9001 DENT	78 CLIN ROT/SEM		3.0 TANI	MT RF	8:00AM-5:00 OFF CAMP	0	0 0
5258 ACC	201 ELEM ACC I	LEC	3.0 KARR	S	1:00PM-3:30 ILIA104	35	0 35								
5259 ACC	201 ELEM ACC I	LEC	3.0 KARR	S	1:00PM-3:30 ILIA104	35	0 35								
5260 ACC	201 ELEM ACC I	LEC	3.0 KARR	S	1:00PM-3:30 ILIA104	35	0 35								
5261 ACC	201 ELEM ACC I	LEC	3.0 KARR	S	1:00PM-3:30 ILIA104	35	0 35	5244 DP	101 INTRO DP W/APPLN		3.0 NIETHAMMER	M W F	8:00AM-8:50 ILIA128	30	0 30
5262 ACC	201 ELEM ACC I	LEC	3.0 KARR	S	1:00PM-3:30 ILIA104	35	0 35	5245 DP	101 INTRO DP W/APPLN		3.0 NIETHAMMER	T R	11:00AM-12:15 ILIA128	30	0 30
5263 ACC	201 ELEM ACC I	LEC	3.0 KARR	S	1:00PM-3:30 ILIA104	35	0 35	5246 DP	106 COMPUTER OPS II		3.0 DUNCAN	M W F	12:00PM-12:50 ILIA129	30	0 30
5264 ACC	201 ELEM ACC I	LEC	3.0 KARR	S	1:00PM-3:30 ILIA104	35	0 35	5247 DP	106L COMP OPER II LAB		DUNCAN	M W F	1:00PM-2:50 ILIA126	5	0 5
5265 ACC	201 ELEM ACC I	LEC	3.0 KARR	S	1:00PM-3:30 ILIA104	35	0 35	5248 DP	110 INTRO PROG PROC		3.0 LAI	M W F	9:00AM-9:50 ILIA106	30	0 30
5266 ACC	201 ELEM ACC I	LEC	3.0 KARR	S	1:00PM-3:30 ILIA104	35	0 35	7212 DP	110 INTRO PROG PROC		3.0 TANABE	T R	5:30PM-6:45 ILIA106	30	0 30
5267 ACC	201 ELEM ACC I	LEC	3.0 KARR	S	1:00PM-3:30 ILIA104	35	0 35	5249 DP	113 DATABASE FNDMTLS		3.0 DUNCAN	M W F	10:00AM-10:50 ILIA106	30	0 30
5268 ACC	201 ELEM ACC I	LEC	3.0 KARR	S	1:00PM-3:30 ILIA104	35	0 35	5250 DP	151E STRUC DBASE PROG	LEC	3.0 PROUGH	T R	11:00AM-12:15 ILIA106	30	0 30
5269 ACC	201 ELEM ACC I	LEC	3.0 KARR	S	1:00PM-3:30 ILIA104	35	0 35	5251 DP	155 INTRO TO COBOL		3.0 LAI	M W F	8:00AM-8:50 ILIA106	30	0 30
5270 ACC	201 ELEM ACC I	LEC	3.0 KARR	S	1:00PM-3:30 ILIA104	35	0 35	5252 DP	156 INTRO TO RPG		3.0 NIETHAMMER	M W F	11:00AM-11:50 ILIA106	30	0 30
5271 ACC	201 ELEM ACC I	LEC	3.0 KARR	S	1:00PM-3:30 ILIA104	35	0 35	5253 DP	255 ADVANCED COBOL		3.0 LAI	T R	9:30AM-10:45 ILIA105	30	0 30
5272 ACC	201 ELEM ACC I	LEC	3.0 KARR	S	1:00PM-3:30 ILIA104	35	0 35	5254 DP	256 ADVANCED RPG		3.0 DUNCAN	T R	11:00AM-12:15 0933104	30	0 30
5273 ACC	201 ELEM ACC I	LEC	3.0 KARR	S	1:00PM-3:30 ILIA104	35	0 35	5255 DP	266 ASMBLY LANG PROG		3.0 KILLAM	T R	9:30AM-10:45 ILIA106	30	0 30
5274 ACC	201 ELEM ACC I	LEC	3.0 KARR	S	1:00PM-3:30 ILIA104	35	0 35	5256 DP	280B MAINFRAME APPLNS		3.0 LAI	T R	8:00AM-9:15 ILIA106	30	0 30
5275 ACC	201 ELEM ACC I	LEC	3.0 KARR	S	1:00PM-3:30 ILIA104	35	0 35	7213 DP	280B MAINFRAME APPLNS		3.0 LAI	M W	5:30PM-6:45 ILIA106	30	0 30
5276 ACC	201 ELEM ACC I	LEC	3.0 KARR	S	1:00PM-3:30 ILIA104	35	0 35	5257 DP	280C MINICMPTR APPLNS		3.0 DUNCAN	T R	2:00PM-3:15 ILIA106	30	0 30
5277 ACC	201 ELEM ACC I	LEC	3.0 KARR	S</											



# Schedule of Courses

Page 7

Class Crs										Class Crs																		
Code	Dept	CRSNO	Title	LEC	LAB	UNIT	INSTRUCTOR	DAYS	TIME(S)	Room	Max	Cur	STS	Code	Dept	CRSNO	Title	LEC	LAB	UNIT	INSTRUCTOR	DAYS	TIME(S)	Room	Max	Cur	STS	
5102	EMT	101	PRE-HOS CARE PRA (DATES: 05-10-92 TO 07-30-92)	3.0			KELSO	ARR		OFF CAMP	20	0	20	5678	ENG	109	EXPOS WRITING II	3.0			ROBINSON	T R	12:30PM- 1:45	KALI120	25	0	25	
5103	EMT	110V	PRE HOS EMC INT	LEC v 6.0			KELSO	ARR		D 003	20	0	20	5679	ENG	197	BUS/TECH WRTG	LEC	3.0			KAWAHARADA	T R	12:30PM- 1:45	KALI121	21	0	21
5605	ENG	9V	BASIC READING	LEC v 4.0			IDA	MTWRF	8:00AM- 8:50	ILIA228F	23	0	23	5680	ENG	204W	CREATIVE WRTG-WI	3.0			HARADA	T R	12:30PM- 1:45	ILIA205	20	0	20	
5606	ENG	9V	BASIC READING	LEC v 4.0			IDA	MTWRF	9:00AM- 9:50	ILIA228F	23	0	23	5681	ENG	209W	BUS/MGT WRTG-WI	3.0			KAWAHARADA	W F	12:00PM- 1:15	KAU1108	20	0	20	
5607	ENG	9V	BASIC READING	LEC v 4.0			KELLEY-DANIEL	MTWRF	11:00AM-11:50	ILIA228F	23	0	23	5682	ENG	209W	BUS/MGT WRTG-WI	3.0			KAWAHARADA	T R	2:00PM- 3:15	KALI121	20	0	20	
5608	ENG	9V	BASIC READING	LEC v 4.0			CORBIN-MULLIK	M W F	1:30PM- 2:20	KALI108	23	0	23	6649	ENG	214W	MAJ AUTHORS OF EXPOS-WI	LEC	3.0			CROW	M W F	11:00AM-11:50	KALI121	20	0	20
✓ 5608 ENG: APPROVAL REQ																												
7601	ENG	9V	BASIC READING	LEC v 4.0			STAFF	M W R	5:00PM- 6:25	KALI108	23	0	23	5683	ENG	215W	ADV EXPO WRITING	3.0			SHIMABUKURO	M W F	2:30PM- 3:20	KOA 103	20	0	20	
5609	ENG	10V	BASIC WRITING V	LEC v 4.0			SINGER	MTWRF	8:00AM- 8:50	ILIA206	21	0	21	5684	ENG	215W	ADV EXPO WRITING	3.0			COOK	T R	12:00PM- 1:15	ILIA204	20	0	20	
5610	ENG	10V	BASIC WRITING V	LEC v 4.0			STAFF	MTWRF	9:00AM- 9:50	ILIA205	21	0	21	5538	ENG	250	AM LIT	LEC	3.0			HERSHINOW	M W F	10:00AM-10:50	KALI238	25	0	25
5611	ENG	10V	BASIC WRITING V	LEC v 4.0			SINGER	MTWRF	9:00AM- 9:50	ILIA206	21	0	21	5539	ENG	250	AM LIT	LEC	3.0			HERSHINOW	M W F	11:00AM-11:50	KALI238	25	0	25
5612	ENG	10V	BASIC WRITING V	LEC v 4.0			KELLEY-DANIEL	MTWRF	10:00AM-10:50	ILIA205	21	0	21	5540	ENG	250	AM LIT	LEC	3.0			HERSHINOW	M W F	1:30PM- 2:20	KALI238	25	0	25
5613	ENG	10V	BASIC WRITING V	LEC v 4.0			STAFF	MTWRF	11:00AM-11:50	ILIA206	21	0	21	7501	ENG	250	AM LIT	LEC	3.0			REISNER	T R	5:30PM- 6:45	KALI238	25	0	25
5614	ENG	10V	BASIC WRITING V	LEC v 4.0			LEVY	M W F	1:30PM- 2:20	ILIA205	21	0	21	8501	ENG	250W	AM LIT-WI	3.0			MCCULLOUGH	S	1:00PM- 3:30	KOA 103	20	0	20	
✓ 5614 ENG: APPROVAL REQ																												
5615	ENG	10V	BASIC WRITING V	LEC v 4.0			KELLEY-DANIEL	MTWRF	2:30PM- 3:20	ILIA206	21	0	21	5541	ENG	252W	BRIT LIT - WI	3.0			MAU	M W	3:30PM- 4:45	KALI238	20	0	20	
5616	ENG	10V	BASIC WRITING V	LEC v 4.0			STAFF	MTWRF	3:30PM- 4:20	ILIA206	21	0	21	7502	ENG	252W	BRIT LIT - WI	3.0			MAU	M W	5:30PM- 6:45	KALI238	20	0	20	
7602	ENG	10V	BASIC WRITING V	LEC v 4.0			STAFF	M W R	5:00PM- 6:15	ILIA205	21	0	21	5542	ENG	254W	WORLD LIT - WI	3.0			HERSHINOW	T R	12:30PM- 1:45	KALI238	20	0	20	
7603	ENG	10V	BASIC WRITING V	LEC v 4.0			STAFF	M W R	6:30PM- 7:45	KALI108	21	0	21	5543	ENG	254W	WORLD LIT - WI	3.0			HERSHINOW	T R	2:00PM- 3:15	KALI238	20	0	20	
5617	ENG	21V	DEVELOP READING	LEC v 3.0			KURATA	M W F	9:00AM-10:15	KALI108	23	0	23	7503	ENG	256	TYPES POET/DRAMA	LEC	3.0			STENGER	T R	7:00PM- 8:15	KALI238	25	0	25
5618	ENG	21V	DEVELOP READING	LEC v 3.0			KURATA	M W F	11:00AM-12:15	KALI108	23	0	23	5544	ENG	256W	TYPES OF LIT -WI	3.0			NAKAMURA	M W F	8:00AM- 8:50	KALI238	20	0	20	
5619	ENG	21V	DEVELOP READING	LEC v 3.0			KURATA	T R	9:30AM-10:45	KALI108	23	0	23	5545	ENG	256W	TYPES OF LIT -WI	3.0			NAKAMURA	M W F	9:00AM- 9:50	KALI238	20	0	20	
5620	ENG	21V	DEVELOP READING	LEC v 3.0			KURATA	T R	12:30PM- 1:45	KALI108	23	0	23	5547	ENG	257M	ASIAN/PACIFIC LIT	LEC	3.0			MAU	T R	11:00AM-12:15	KALI238	25	0	25
✓ 5620 ENG: APPROVAL REQ																												
5621	ENG	21V	DEVELOP READING	LEC v 3.0			BROWN	M W F	1:30PM- 2:45	ILIA228F	23	0	23	5546	ENG	257Q	THE HERO	LEC	3.0			MCCULLOUGH	W F	12:00PM- 1:15	KALI238	25	0	25
5622	ENG	21V	DEVELOP READING	LEC v 3.0			STAFF	M W F	3:30PM- 4:45	ILIA228F	23	0	23	5686	ESL	1	BEG ENGLISH	4.0			ACEVES-FOSTER	MTWRF	8:00AM- 8:50	ILIA205	23	0	23	
7604	ENG	21V	DEVELOP READING	LEC v 3.0			BROWN	M W	5:30PM- 6:45	ILIA228F	23	0	23	5689	ESL	2	SP IMPROV	LEC	3.0			LANDFIELD	M W F	11:00AM-11:50	ILIA205	23	0	23
5623	ENG	22	INTRO EXPOS WRTG	LEC v 3.0			SACHDEVA	M W F	8:00AM- 8:50	KAU1108	21	0	21	7619	ESL	2	SP IMPROV	LEC	3.0			STAFF	M W	7:00PM- 8:15	ILIA205	23	0	23
5624	ENG	22	INTRO EXPOS WRTG	LEC v 3.0			KIRKPATRICK	T R	8:00AM- 9:15	KALI120	21	0	21	5653	ESL	3	RDG-ESL STUDENTS	LEC	4.0			ACEVES-FOSTER	MTWRF	10:00AM-10:50	ILIA206	23	0	23
5625	ENG	22	INTRO EXPOS WRTG	LEC v 3.0			ROBINSON	M W F	10:00AM-10:50	I 004	21	0	21	5694	ESL	3	RDG-ESL STUDENTS	LEC	4.0			NOJI	MTWRF	2:30PM- 3:20	ILIA205	23	0	23
5626	ENG	22	INTRO EXPOS WRTG	LEC v 3.0			COOK	M W F	11:00AM-11:50	KALI120	21	0	21	5695	ESL	3	RDG-ESL STUDENTS	LEC	4.0			NOJI	MTWRF	3:30PM- 4:20	ILIA204	23	0	23
✓ 5626 ENG: APPROVAL REQ																												
5627	ENG	22	INTRO EXPOS WRTG	LEC v 3.0			CROW	M W F	2:30PM- 3:20	KALI121	21	0	21	7621	ESL	3	RDG-ESL STUDENTS	LEC	4.0			NOJI	M W R	7:00PM- 8:25	ILIA204	23	0	23
5628	ENG	22	INTRO EXPOS WRTG	LEC v 3.0			INOUE	M W F	11:00AM-11:50	0933202	21	0	21	5690	ESL	4	WRTG-ESL STUDENT	LEC	4.0			ACEVES-FOSTER	MTWRF	11:00AM-11:50	ILIA204	21	0	21
5629	ENG	22	INTRO EXPOS WRTG	LEC v 3.0			MAKAGON	W F	12:00PM- 1:15	I 001	21	0	21	5691	ESL	4	WRTG-ESL STUDENT	LEC	4.0			STAFF	MTWRF	2:30PM- 3:20	ILIA204	21	0	21
5630	ENG	22	INTRO EXPOS WRTG	LEC v 3.0			ROBINSON	M W F	1:30PM- 2:20	KALI121	21	0	21	5692	ESL	4	WRTG-ESL STUDENT	LEC	4.0			STAFF	MTWRF	3:30PM- 4:20	ILIA205	21	0	21
5631	ENG	22	INTRO EXPOS WRTG	LEC v 3.0			INOUE	M W F	1:30PM- 2:20	0933203	21	0	21	7620	ESL	4	WRTG-ESL STUDENT	LEC	4.0			STAFF	M W R	5:00PM- 6:25	ILIA204	21	0	21
5632	ENG	22	INTRO EXPOS WRTG	LEC v 3.0			BALZARETTI	M W F	2:30PM- 3:20	KAU1108	21	0	21	5685	ESL	5	COMMUN SKILLS-ESL	LEC	3.0			NOJI	T R	11:00AM-12:15	ILIA205	23	0	23
5633	ENG	22	INTRO EXPOS WRTG	LEC v 3.0			INOUE	M W F	2:30PM- 3:20	0933203	21	0	21	5687	ESL	100	EXPOS WRTG	LEC	3.0			COOK	M W F	9:00AM- 9:50	KALI120	23	0	23
5634	ENG	22	INTRO EXPOS WRTG	LEC v 3.0			LEVY	M W F	3:30PM- 4:20	KAU1108	21	0	21	5688	ESL	100	EXPOS WRTG	LEC	3.0			COOK	T R	5:30PM- 6:45	ILIA128	23	0	23
5635	ENG	22	INTRO EXPOS WRTG	LEC v 3.0			BOOMLA	M W F	2:30PM- 3:20	KALI238	21	0	21	5922	FAMR	230	SURVEY GRO + DEV	LEC	3.0			SOMER	M W F	10:00AM-10:50	0933202	35	0	35
5636	ENG	22	INTRO EXPOS WRTG	LEC v 3.0			BALZARETTI	T R	3:30PM- 4:45	KOA 102	21	0	21	5923	FAMR	230	SURVEY GRO + DEV	LEC	3.0			SOMER	M F	1:30PM- 2:45	LEAH003	35	0	35
5637	ENG	22	INTRO EXPOS WRTG	LEC v 3.0			MAKAGON	T R	11:00AM-12:15	KALI120	21																	



Class Crs Code Dept	CRSNO Title	LEC LAB UNIT INSTRUCTOR	DAYS	MEETING TIME (S)	Room	Max Cur Enr Enr	STS REM
6410 FSHE	228 DINING RM SUPVN (DATES: 03-16-92 TO 05-08-92)	L-L 4.0 MOSSMAN	M	9:00AM-11:00 OHEL209		0 0 0	
8409 FSHE	228 DINING RM SUPVN (DATES: 01-15-92 TO 03-13-92)	L-L 4.0 ARELLANO	M	2:30PM- 4:30 OHEL209		0 0 0	
8410 FSHE	228 DINING RM SUPVN (DATES: 03-16-92 TO 05-08-92)	L-L 4.0 ARELLANO	M	2:30PM- 4:30 OHEL209		0 0 0	
6411 FSHE	240 HOSP PURCHASING (DATES: 01-15-92 TO 03-13-92)	L-L 3.0 TAKAHASHI	MTWRF	8:00AM-10:00 OHEL111		0 0 0	
6412 FSHE	240 HOSP PURCHASING (DATES: 03-16-92 TO 05-08-92)	L-L 3.0 TAKAHASHI	MTWRF	8:00AM-10:00 OHEL111		0 0 0	
6413 FSHE	241 HOSP COST CNTRL (DATES: 01-15-92 TO 03-13-92)	L-L 4.0 TAKAHASHI	M	10:30AM-11:30 OHEL111		0 0 0	
6414 FSHE	241 HOSP COST CNTRL (DATES: 03-16-92 TO 05-08-92)	L-L 4.0 TAKAHASHI	M	10:30AM-11:30 OHEL111		0 0 0	
6424 FSHE	281 SCH FSR RCDKPG (DATES: 01-15-92 TO 03-13-92)	L-L 2.0 STAFF	T R	4:30PM- 6:20 OHIA112		15 0 15	
6425 FSHE	283 GARDE MANGER	L-L 3.0 STAFF	M	2:30PM- 4:20 OHEL106		0 0 0	
6427 FSHE	285 SCE HUMAN NUTR	LEC 3.0 STAFF	T R	8:00AM- 9:15 OHEL124		0 0 0	
6433 FSHE	290 HOSP MANAGEMENT	LEC 3.0 UMEHIRA	M W F	8:00AM- 9:50 OHEL124		0 0 0	
8433 FSHE	290 HOSP MANAGEMENT	LEC 3.0 STAFF	T R	7:00PM- 8:15 OHEL124		0 0 0	
6435 FSHE	293C SCH FDSERV INTERN.	OTH 3.0 STAFF	M	4:30PM- 4:30 OHIA112		20 0 20	
6437 FSHE	293E HOTEL OPER INTER	OTH 3.0 UMEHIRA	M	11:00AM-11:50 OHEL124		0 0 0	
5926 GEOG	101 MAN NAT ENVIRON	LEC 3.0 STAFF	M W	2:30PM- 3:45 0933206		35 0 35	
5927 GEOG	101L MAN NAT ENV LAB	LAB 1.0 STAFF	F	2:30PM- 5:30 0933206		16 0 16	
5928 GEOG	102 WLD REG GEOG	LEC 3.0 TAGAWA	M W F	10:00AM-10:50 0933206		35 0 35	
5929 GEOG	102 WLD REG GEOG	LEC 3.0 STAFF	M W F	1:30PM- 2:20 0933206		35 0 35	
7905 GEOG	102 WLD REG GEOG	LEC 3.0 LYONS	M W	5:30PM- 6:45 0933206		35 0 35	
8902 GEOG	102 WLD REG GEOG	LEC 3.0 TAGAWA	S	10:15AM-12:45 0933206		35 0 35	
5930 GEOG	151 GEOG + CONT SOC	LEC 3.0 TAGAWA	M W F	11:00AM-11:50 0933206		35 0 35	
5833 GG	101L INTR PHYS GEOL I	1.0 LANE	T	8:00AM-10:50 KOKI207		20 0 20	
5834 GG	200 GEOLOGY HI ISLES	3.0 LANE	T R	11:00AM-12:15 KOKI206		35 0 35	
5698 HAW	50 CONVERS' TL HAWN	LEC 3.0 STAFF	M W F	1:30PM- 2:20 I 001		25 0 25	
5699 HAW	101 ELEM HAWAIIAN I	LEC 4.0 WIGHT	MTWRF	10:00AM-10:50 I 001		25 0 25	
6000 HAW	102 ELEM HAWAIIAN II	LEC 4.0 WIGHT	MTWRF	11:00AM-11:50 I 001		25 0 25	
7622 HAW	102 ELEM HAWAIIAN II	LEC 4.0 WIGHT	M W	5:00PM- 6:25 KALI121		25 0 25	
6601 HAW	202 INTER HAW II	4.0 WIGHT	MTWRF	2:30PM- 3:20 I 001		25 0 25	
5548 HIST	151 WORLD CIV I	LEC 3.0 FORBIS	M W F	8:00AM- 8:50 KALI208		35 0 35	
5549 HIST	151 WORLD CIV I	LEC 3.0 FORBIS	M W F	9:00AM- 9:50 KALI208		35 0 35	
5550 HIST	151 WORLD CIV I	LEC 3.0 OSORIO	M W F	10:00AM-10:50 KOA 102		35 0 35	
5551 HIST	151 WORLD CIV I	LEC 3.0 CHAPPELL	M W	2:30PM- 3:45 KOA 102		35 0 35	
5552 HIST	151 WORLD CIV I	LEC 3.0 STAFF	M W	4:00PM- 5:15 KOA 102		35 0 35	
5553 HIST	151 WORLD CIV I	LEC 3.0 FORBIS	M W	12:00PM- 1:15 KALI208		35 0 35	
5554 HIST	151 WORLD CIV I	LEC 3.0 FIELD	T R	8:00AM- 9:15 KALI208		35 0 35	
5555 HIST	151 WORLD CIV I	LEC 3.0 PANG	T R	9:30AM-10:45 KALI208		35 0 35	
5556 HIST	151 WORLD CIV I	LEC 3.0 FIELD	T R	11:00AM-12:15 KALI208		35 0 35	
7504 HIST	151 WORLD CIV I	LEC 3.0 STAFF	M W	5:30PM- 6:45 KOA 102		35 0 35	
7505 HIST	151 WORLD CIV I	LEC 3.0 OSORIO	T R	5:30PM- 6:45 KOA 102		35 0 35	
8502 HIST	151 WORLD CIV I	LEC 3.0 PANG	S	10:15AM-12:45 KALI208		35 0 35	
5557 HIST	152 WORLD CIV II	LEC 3.0 FEARRIEN	M W F	8:00AM- 8:50 KOA 102		35 0 35	
5558 HIST	152 WORLD CIV II	LEC 3.0 FEARRIEN	M W F	9:00AM- 9:50 KOA 102		35 0 35	
5559 HIST	152 WORLD CIV II	LEC 3.0 COLE	M W F	10:00AM-10:50 KALI208		35 0 35	
5560 HIST	152 WORLD CIV II	LEC 3.0 COLE	M W F	11:00AM-11:50 KALI208		35 0 35	
5561 HIST	152 WORLD CIV II	LEC 3.0 FEARRIEN	M W F	1:00PM- 1:50 KOA 102		35 0 35	
5562 HIST	152 WORLD CIV II	LEC 3.0 OSORIO	M W F	1:30PM- 2:20 KOA 102		35 0 35	
5563 HIST	152 WORLD CIV II	LEC 3.0 FEARRIEN	T R	8:00AM- 9:15 KOA 102		35 0 35	
5564 HIST	152 WORLD CIV II	LEC 3.0 COLE	T R	11:00AM-12:15 KOA 102		35 0 35	
5565 HIST	152 WORLD CIV II	LEC 3.0 CHAPPELL	T R	12:30PM- 1:45 KOA 102		35 0 35	
5566 HIST	152 WORLD CIV II	LEC 3.0 FIELD	T R	12:30PM- 1:45 KALI208		35 0 35	
5567 HIST	152 WORLD CIV II	LEC 3.0 CHAPPELL	T R	3:30PM- 4:45 KALI208		35 0 35	
7506 HIST	152 WORLD CIV II	LEC 3.0 STAFF	M W	5:30PM- 6:45 KALI208		35 0 35	
7507 HIST	152 WORLD CIV II	LEC 3.0 STAFF	T R	7:00PM- 8:15 KALI208		35 0 35	
8503 HIST	152 WORLD CIV II	LEC 3.0 FUJITA	S	1:00PM- 3:30 KOA 102		35 0 35	
5568 HIST	224 HIST OF HAWAII	LEC 3.0 OSORIO	M W	12:00PM- 1:15 KOA 102		35 0 35	
7508 HIST	224 HIST OF HAWAII	LEC 3.0 OSORIO	T R	7:00PM- 8:15 KOA 102		35 0 35	
5569 HIST	242M CIV ASIA II-WI	3.0 PANG	T R	2:00PM- 3:15 KALI208		20 0 20	
7509 HIST	242M CIV ASIA II-WI	3.0 PANG	T R	5:30PM- 6:45 KALI208		20 0 20	
5570 HIST	281W INTR AM HIST I	LEC 3.0 SEARS	M W F	1:30PM- 2:20 KALI208		35 0 35	
5571 HIST	282 INTR AM HIST II	LEC 3.0 SEARS	M W F	2:30PM- 3:20 KALI208		35 0 35	
5572 HIST	288 PACIFIC ILS HISTORY	LEC 3.0 COLE	T R	9:30AM-10:45 KOA 102		35 0 35	
5009 HLTH	21B INTR MED TERM (DATES: 01-15-92 TO 02-18-92)	LEC 1.0 STAFF	T R	11:00AM-12:15 KAU1216		0 0 0	
5010 HLTH	21C MED TERM (DATES: 02-20-92 TO 05-07-92)	LEC 2.0 STAFF	T R	11:00AM-12:15 KAU1216		0 0 0	
8001 HLTH	29 1ST AID/CPR (DATES: 03-14-92 TO 05-02-92)	1.0 ASAKURA	S	8:00AM-12:00 KAU1216		0 0 0	
8002 HLTH	29 1ST AID/CPR (DATES: 03-14-92 TO 05-02-92)	1.0 HOO	S	8:00AM-12:00 KAU1216		0 0 0	
5011 HLTH	30 PHARM HLTH PRAC	LEC 3.0 YOUNG	M W	1:30PM- 2:45 KAU1109		0 0 0	
5012 HLTH	52B INTR TO DISEASE (DATES: 01-16-92 TO 03-05-92)	1.0 HAMADA	R	1:00PM- 2:50 KAU1109		0 0 0	
5013 HLTH	52C STUDY OF DISEASE (DATES: 03-10-92 TO 05-07-92)	2.0 HAMADA	T R	1:00PM- 2:50 KAU1109		0 0 0	
5014 HLTH	120 INTR HLTH PROF	LEC 1.0 KOSEKI	M	12:00PM-12:50 KAU1216		0 0 0	
5015 HLTH	125 SURVEY MED TERM	1.0 STAFF	F	11:00AM-11:50 KAU1216		0 0 0	
5016 HLTH	125 SURVEY MED TERM	1.0 STAFF	F	12:00PM-12:50 KAU1216		0 0 0	
8003 HLTH	130 FIRST AID/SAFETY (DATES: 01-18-92 TO 03-07-92)	LEC 1.0 ASAKURA	S	8:00AM-12:00 KAU1216		0 0 0	
8004 HLTH	130 FIRST AID/SAFETY (DATES: 01-18-92 TO 03-07-92)	LEC 1.0 HOO	S	8:00AM-12:00 KAU1216		0 0 0	
6507 HON	150M POLITICS OF ABUNDANCE-WI	LEC 3.0 FIELD	M W	12:00PM- 1:15 KAU1109		20 0 20	
9500 HPER	130 TENNIS: BEGIN	LEC 1.0 SCHWITTERS	F	8:00AM- 9:50 OFF CAMP		15 0 15	
9501 HPER	131 TENNIS: INTER	LEC 1.0 SCHWITTERS	F	10:00AM-11:50 OFF CAMP		15 0 15	
5573 HUM	21 TOUCH THE EARTH	LEC 3.0 HARADA	M W F	10:00AM-10:50 0933203		35 0 35	
5574 HUM	100 THEME IN THE HUM	LEC 3.0 HARADA	M W F	11:00AM-11:50 KOA 103		35 0 35	
7510 HUM	150 ART & MUSIC APPR	LEC 3.0 HARADA	M W	7:00PM- 8:15 KOA 103		35 0 35	
5259 ICS	100 CMPTNG LIT & APP	3.0 NIETHAMMER	M W F	9:00AM- 9:50 ILIA128		30 0 30	
5260 ICS	100 CMPTNG LIT & APP	3.0 NIETHAMMER	T R	2:00PM- 3:15 ILIA128		30 0 30	
5262 ICS	100 CMPTNG LIT & APP	3.0 PROUGH	T R	9:30AM-10:45 ILIA129		32 0 32	
5263 ICS	100 CMPTNG LIT & APP	3.0 PROUGH	T R	2:00PM- 3:15 ILIA129		32 0 32	
7215 ICS	100 CMPTNG LIT & APP	3.0 PROUGH	M W	5:30PM- 6:45 ILIA128		30 0 30	
8204 ICS	100 CMPTNG LIT & APP	3.0 HODGES	S	10:15AM-12:45 ILIA129		32 0 32	
5264 ICS	111 INTR COMP SCI I	3.0 SEITA	T R	9:30AM-10:45 ILIA128		30 0 30	
5265 ICS	111 INTR COMP SCI I	3.0 SEITA	M W	1:30PM- 2:45 ILIA128		30 0 30	
5266 ICS	115 MICROCMPTR APPL	3.0 SEITA	M W F	10:00AM-10:50 ILIA128		30 0 30	
5267 ICS	115 MICROCMPTR APPL	3.0 SEITA	T R	12:30PM- 1:45 ILIA128		30 0 30	
7216 ICS	115 MICROCMPTR APPL	3.0 MURATA	T R	5:30PM- 6:45 ILIA128		30 0 30	
5268 ICS	211 INTR TO CS II	3.0 KILLAM	M W	1:30PM- 2:45 ILIA106		30 0 30	
5998 IS	105 CAREER/LIFE EXPL	LEC 3.0 ROTA	T R	11:00AM-12:15 ILIM105C		25 0 25	
5999 IS	105 CAREER/LIFE EXPL	LEC 3.0 REIMER	M W	12:00PM- 1:15 ILIM105C		25 0 25	
6602 JOURN	197 DESKTOP PUBLISH	2.0 AU	M W	1:30PM- 2:45 B 001		12 0 12	
6603 JOURN	225W FEATURE WRITG-WI	3.0 AU	M W F	10:00AM-10:50 B 001		20 0 20	
6604 JOURN	285V NEWSPAPER PROD	LEC v 3.0 AU	M W F	11:00AM-11:50 B 001		25 0 25	
6605 JPNSE	50 JPNSE VISIT IND	LEC 3.0 STAFF	M W F	2:30PM- 3:20 933 104		25 0 25	
6606 JPNSE	50 JPNSE VISIT IND	LEC 3.0 FUJIKAWA	M W F	1:30PM- 2:20 OHIA112		25 0 25	
7623 JPNSE	50 JPNSE VISIT IND	LEC 3.0 KOBAYASHI	M W	5:30PM- 6:45 KAU1108		25 0 25	
6607 JPNSE	100 ELEM JPNSE-SPEC	OTH 3.0 FUJIKAWA	M W F	10:00AM-10:50 KAU1114		25 0 25	
6608 JPNSE	101 ELEM JPNSE I	LEC 4.0 STAFF	MTWRF	8:00AM- 8:50 KOA 103		25 0 25	
6609 JPNSE	101 ELEM JPNSE I	LEC 4.0 STAFF	MTWRF	8:00AM- 8:50 KAU1107		25 0 25	
6610 JPNSE	101 ELEM JPNSE I	LEC 4.0 STAFF	MTWRF	9:00AM- 9:50 KAU1107		25 0 25	
6611 JPNSE	101 ELEM JPNSE I	LEC 4.0 FUJIKAWA	MTWRF	12:00PM- 1:15 KAU1107		25 0 25	
6612 JPNSE	101 ELEM JPNSE I	LEC 4.0 ISHIGAMI	MTWRF	1:30PM- 2:20 KAU1107		25 0 25	
7624 JPNSE	101 ELEM JPNSE I	LEC 4.0 KOBAYASHI	M W	7:00PM- 8:25 ILIA206		25 0 25	
7625 JPNSE	101 ELEM JPNSE I	LEC 4.0 KOBAYASHI	M W	8:30PM- 9:50 ILIA205		25 0 25	
6613 JPNSE	102 ELEM JPNSE II	LEC 4.0 ISHIGAMI	MTWRF	8:00AM- 8:50 KOKI205		25 0 25	
6614 JPNSE	102 ELEM JPNSE II	LEC 4.0 FUJIKAWA	MTWRF	11:00AM-11:50 KAU1107		25 0 25	
6615 JPNSE	102 ELEM JPNSE II	LEC 4.0 ISHIGAMI	MTWRF	2:30PM- 3:20 KAU1107		25 0 25	
6616 JPNSE	102 ELEM JPNSE II	LEC 4.0 STAFF	MTWRF	3:30PM- 4:20 KAU1114		25 0 25	
6617 JPNSE	102 ELEM JPNSE II	LEC 4.0 KOBAYASHI	MTWRF	3:30PM- 4:20 KAU1107		25 0 25	
7626 JPNSE	102 ELEM JPNSE II	LEC 4.0 STAFF	M W	5:00PM- 6:25 ILIA206		25 0 25	
6618 JPNSE	201 INTER JPNSE I	LEC 4.0 ISHIGAMI	MTWRF	10:00AM-10:50 KAU1107		25 0 25	
6619 JPNSE	201 INTER JPNSE I	LEC 4.0 STAFF	MTWRF	3:30PM- 4:20 KAU1121		25 0 25	
6620 JPNSE	202 INTER JPNSE II	LEC 4.0 STAFF	MTWRF	1:30PM- 2:20 ILIA206		25 0 25	
6621 KOR	102 ELEM KOREAN II	4.0 JEONG	MTWRF	11:00AM-11:50 I 004		25 0 25	
6622 KOR	202 INTER KOREAN II	4.0 JEONG	MTWRF	8:00AM- 8:50 I 004		25 0 25	
5235 LAW	30 BUS LAW I	3.0 TOM	M W F	9:00AM- 9:50 ILIA107		35 0 35	
9451 LAW	102 LEGAL RESEARCH	LEC 3.0 BARNES	M	6:00PM- 9:00		30 0 30	
9452 LAW	111 LITIGATION	3.0 HERSHEY	T R	6:00PM- 9:00		30 0 30	
9453 LAW	121 GEN BUS PRACTICE	3.0 LERUD	M	6:00PM- 9:00		35 0 35	
9454 LAW	136 TORT LAW	3.0 BARNES	M	6:00PM- 9:00		0 0 0	
9455 LAW	140 FAMILY LAW	3.0 ZEASON	M	6:00PM- 9:00		35 0 35	
9456 LAW	1610 PUBLIC SECTOR LAW	LEC PIETSCH	M	6:00PM- 9:00		0 0 0	
9457 LAW	193V COOPERATIVE EDUC	v 3.0 CHONG	T	5:00PM- 6:00		15 0 15	
5236 LAW	200 LEGAL ENV OF BUS	3.0 TOM	M W F	8:00AM- 8:50 ILIA103		35 0 35	
5237 LAW	200 LEGAL ENV OF BUS	3.0 TOM	M W F	12:00PM- 1:15 ILIA107		35 0 35	
5238 LAW	200 LEGAL ENV OF BUS	3.0 TOM	T R	2:00PM- 3:15 ILIA105		35 0 35	
9458 LAW	201 LAW OFFICE MGT	3.0 SEAMON	T R	6:00PM- 9:00		35 0 35	
9459 LAW	202 LEG INT COUN NEG	3.0 LECLAIR	M	6:00PM- 8:50		35 0 35	
9461 LAW	203 LEGAL WRITING	3.0 LEE	M	6:00PM- 9:00		30 0 30	
9462 LAW	2501 ADV ESTATE PLAN	3.0 SEKI	T	6:00PM- 9:00			



# Schedule of Courses

Page 9

Class	Crs	LEC	MEETING	Max	Cur	STS	Class	Crs	LEC	MEETING	Max	Cur	STS			
Code	Dept	CRSNO Title	LAB UNIT INSTRUCTOR DAYS TIME (S) Room Enr Enr REM	Code	Dept	CRSNO Title	LAB UNIT INSTRUCTOR DAYS TIME (S) Room Enr Enr REM	Code	Dept	CRSNO Title	LAB UNIT INSTRUCTOR DAYS TIME (S) Room Enr Enr REM	Code	Dept	CRSNO Title	LAB UNIT INSTRUCTOR DAYS TIME (S) Room Enr Enr REM	
7708	MATH	25 ELEM ALGEBRA II	LEC 3.0 BERG M W 5:30PM- 6:45 KAU1205 30 0 30	5592	MUS	231B VOICE LESSONS	v 1.0 DOO ARR MAIL103 24 0 24	5592	MUS	231B VOICE LESSONS	v 1.0 DOO ARR MAIL103 24 0 24	5592	MUS	231B VOICE LESSONS	v 1.0 DOO ARR MAIL103 24 0 24	
7709	MATH	25 ELEM ALGEBRA II	LEC 3.0 BERG M W 7:00PM- 8:15 KAU1205 30 0 30	5593	MUS	231C PIANO LESSONS	v 1.0 AKAKA ARR MAIL103 24 0 24	5593	MUS	231C PIANO LESSONS	v 1.0 AKAKA ARR MAIL103 24 0 24	5593	MUS	231C PIANO LESSONS	v 1.0 AKAKA ARR MAIL103 24 0 24	
7710	MATH	25 ELEM ALGEBRA II	LEC 3.0 ALLIS T R 5:30PM- 6:45 KAU1114 24 0 24													
8702	MATH	25 ELEM ALGEBRA II	LEC 3.0 STAFF S 10:15AM-12:45 KAU1206 30 0 30	5150	NURS	12 DISEASE, DIET, MED	1.0 BASUEL M W F 4:00PM- 7:00 LEAH007 0 0 0	5150	NURS	12 DISEASE, DIET, MED	1.0 BASUEL M W F 4:00PM- 7:00 LEAH007 0 0 0	5150	NURS	12 DISEASE, DIET, MED	1.0 BASUEL M W F 4:00PM- 7:00 LEAH007 0 0 0	
5736	MATH	27 INTER ALGEBRA	LEC 3.0 CHUNG M W F 9:00AM- 9:50 ILIA203 30 0 30													
5737	MATH	27 INTER ALGEBRA	LEC 3.0 MASUI M W F 10:00AM-10:50 0933104 30 0 30	5151	NURS	13 HELPING	1.0 BASUEL M W F 4:00PM- 7:00 LEAH007 0 0 0	5151	NURS	13 HELPING	1.0 BASUEL M W F 4:00PM- 7:00 LEAH007 0 0 0	5151	NURS	13 HELPING	1.0 BASUEL M W F 4:00PM- 7:00 LEAH007 0 0 0	
5738	MATH	27 INTER ALGEBRA	LEC 3.0 KADALA M W F 12:00PM- 1:15 ILIA203 30 0 30													
5739	MATH	27 INTER ALGEBRA	LEC 3.0 SWORD M W 2:30PM- 3:45 D 001 30 0 30	5152	NURS	14 REG, ACC, COMM RES	1.0 BASUEL M W F 4:00PM- 7:00 LEAH007 0 0 0	5152	NURS	14 REG, ACC, COMM RES	1.0 BASUEL M W F 4:00PM- 7:00 LEAH007 0 0 0	5152	NURS	14 REG, ACC, COMM RES	1.0 BASUEL M W F 4:00PM- 7:00 LEAH007 0 0 0	
5740	MATH	27 INTER ALGEBRA	LEC 3.0 SWORD M W 4:00PM- 5:15 D 001 30 0 30													
5741	MATH	27 INTER ALGEBRA	LEC 3.0 KODAMA T R 8:00AM- 9:15 ILIA202 30 0 30	5153	NURS	15 PERS CARE ATTEND	4.0 TREDICK M W F 8:00AM- 1:30 LEAH007 0 0 0	5153	NURS	15 PERS CARE ATTEND	4.0 TREDICK M W F 8:00AM- 1:30 LEAH007 0 0 0	5153	NURS	15 PERS CARE ATTEND	4.0 TREDICK M W F 8:00AM- 1:30 LEAH007 0 0 0	
5742	MATH	27 INTER ALGEBRA	LEC 3.0 CHOCK T R 9:30AM-10:45 KAU1206 30 0 30													
5743	MATH	27 INTER ALGEBRA	LEC 3.0 KODAMA T R 11:00AM-12:15 ILIA202 30 0 30	5154	NURS	16 NURSE'S AIDE	8.0 BASUEL MTWRF 7:30AM- 2:30 LEAH005 0 0 0	5154	NURS	16 NURSE'S AIDE	8.0 BASUEL MTWRF 7:30AM- 2:30 LEAH005 0 0 0	5154	NURS	16 NURSE'S AIDE	8.0 BASUEL MTWRF 7:30AM- 2:30 LEAH005 0 0 0	
5744	MATH	27 INTER ALGEBRA	LEC 3.0 CHOCK T R 12:30PM- 1:45 ILIA202 30 0 30													
5767A	MATH	27 INTER ALGEBRA	LEC 3.0 PAK MTWRF 1:30PM- 2:45 ILIA203 30 0 30	5155	NURS	16 NURSE'S AIDE	8.0 TREDICK MTWRF 7:30AM- 2:30 LEAH005 0 0 0	5155	NURS	16 NURSE'S AIDE	8.0 TREDICK MTWRF 7:30AM- 2:30 LEAH005 0 0 0	5155	NURS	16 NURSE'S AIDE	8.0 TREDICK MTWRF 7:30AM- 2:30 LEAH005 0 0 0	
		(DATES: 01-13-92 TO 02-27-92)														
7712	MATH	27 INTER ALGEBRA	LEC 3.0 MOWBRAY M W 5:30PM- 6:45 ILIA202 30 0 30	5156	NURS	122 MED-SURG NURSING	14.0 ROBILARD M F 9:30AM-12:30 LEAH003 0 0 0	5156	NURS	122 MED-SURG NURSING	14.0 ROBILARD M F 9:30AM-12:30 LEAH003 0 0 0	5156	NURS	122 MED-SURG NURSING	14.0 ROBILARD M F 9:30AM-12:30 LEAH003 0 0 0	
7713	MATH	27 INTER ALGEBRA	LEC 3.0 IATNE M W 7:00PM- 8:15 KAU1206 30 0 30													
7714	MATH	27 INTER ALGEBRA	LEC 3.0 ALLIS T R 7:00PM- 8:15 KAU1206 30 0 30	5157	NURS	122 MED-SURG NURSING	14.0 AOKI M F 9:30AM-12:30 LEAH003 0 0 0	5157	NURS	122 MED-SURG NURSING	14.0 AOKI M F 9:30AM-12:30 LEAH003 0 0 0	5157	NURS	122 MED-SURG NURSING	14.0 AOKI M F 9:30AM-12:30 LEAH003 0 0 0	
5775	MATH	50H TECH MATH/ED SER	LEC 3.0 OKAMURA M W 2:30PM- 3:45 KAU1206 30 0 30													
5746	MATH	100 SURVEY OF MATH	LEC 3.0 CHUNG M W F 8:00AM- 8:50 ILIA203 35 0 35	5158	NURS	122 MED-SURG NURSING	14.0 KEYWORTH M F 9:30AM-12:30 LEAH003 0 0 0	5158	NURS	122 MED-SURG NURSING	14.0 KEYWORTH M F 9:30AM-12:30 LEAH003 0 0 0	5158	NURS	122 MED-SURG NURSING	14.0 KEYWORTH M F 9:30AM-12:30 LEAH003 0 0 0	
5747	MATH	100 SURVEY OF MATH	LEC 3.0 PAK M W 3:00PM- 4:15 ILIA202 35 0 35													
5748	MATH	100 SURVEY OF MATH	LEC 3.0 CHUNG T R 9:30AM-10:45 ILIA203 35 0 35	5159	NURS	122 MED-SURG NURSING	14.0 JOHNSON M F 9:30AM-12:30 LEAH003 0 0 0	5159	NURS	122 MED-SURG NURSING	14.0 JOHNSON M F 9:30AM-12:30 LEAH003 0 0 0	5159	NURS	122 MED-SURG NURSING	14.0 JOHNSON M F 9:30AM-12:30 LEAH003 0 0 0	
7716	MATH	100 SURVEY OF MATH	LEC 3.0 PAK M W 7:00PM- 8:15 ILIA203 35 0 35													
8703	MATH	100 SURVEY OF MATH	LEC 3.0 CHUNG S 7:30AM-10:00 ILIA203 35 0 35	5163	NURS	153L BAS NU CON LAB	8.0 WALKER T 8:00AM-11:00 KAU1205 12 0 12	5163	NURS	153L BAS NU CON LAB	8.0 WALKER T 8:00AM-11:00 KAU1205 12 0 12	5163	NURS	153L BAS NU CON LAB	8.0 WALKER T 8:00AM-11:00 KAU1205 12 0 12	
5750	MATH	135 ELEM FUNCTIONS	LEC 3.0 NEIDHARDT M W F 9:00AM- 9:50 OHIA112 35 0 35	5160	NURS	153W BAS NURS CONCEPT-WI	8.0 WALKER W 7:30AM-12:30 KAU1202 12 0 12	5160	NURS	153W BAS NURS CONCEPT-WI	8.0 WALKER W 7:30AM-12:30 KAU1202 12 0 12	5160	NURS	153W BAS NURS CONCEPT-WI	8.0 WALKER W 7:30AM-12:30 KAU1202 12 0 12	
5751	MATH	135 ELEM FUNCTIONS	LEC 3.0 KADALA M W F 11:00AM-11:50 ILIA202 35 0 35													
5752	MATH	135 ELEM FUNCTIONS	LEC 3.0 MOWBRAY M W F 1:30PM- 2:20 ILIA202 35 0 35	5161	NURS	153W BAS NURS CONCEPT-WI	8.0 JONGEWAARD T 8:00AM-11:00 KAU1205 12 0 12	5161	NURS	153W BAS NURS CONCEPT-WI	8.0 JONGEWAARD T 8:00AM-11:00 KAU1205 12 0 12	5161	NURS	153W BAS NURS CONCEPT-WI	8.0 JONGEWAARD T 8:00AM-11:00 KAU1205 12 0 12	
5753	MATH	135 ELEM FUNCTIONS	LEC 3.0 MOWBRAY M W 2:30PM- 3:45 ILIA202 35 0 35													
5754	MATH	135 ELEM FUNCTIONS	LEC 3.0 LEE T R 8:00AM- 9:15 933 104 35 0 35	5162	NURS	153W BAS NURS CONCEPT-WI	8.0 PARMELEE T 8:00AM-11:00 KAU1205 12 0 12	5162	NURS	153W BAS NURS CONCEPT-WI	8.0 PARMELEE T 8:00AM-11:00 KAU1205 12 0 12	5162	NURS	153W BAS NURS CONCEPT-WI	8.0 PARMELEE T 8:00AM-11:00 KAU1205 12 0 12	
5755	MATH	135 ELEM FUNCTIONS	LEC 3.0 PERKOWSKI T R 9:30AM-10:45 B 002 35 0 35													
5756	MATH	135 ELEM FUNCTIONS	LEC 3.0 YODER T R 12:30PM- 1:45 KAU1205 35 0 35	9164	NURS	153W BAS NURS CONCEPT-WI	8.0 BAHRAMI M 4:30PM- 7:30 LEAH003 12 0 12	9164	NURS	153W BAS NURS CONCEPT-WI	8.0 BAHRAMI M 4:30PM- 7:30 LEAH003 12 0 12	9164	NURS	153W BAS NURS CONCEPT-WI	8.0 BAHRAMI M 4:30PM- 7:30 LEAH003 12 0 12	
5758	MATH	135 ELEM FUNCTIONS	LEC 3.0 PERKOWSKI T R 2:00PM- 3:15 KAU1205 35 0 35													
5767B	MATH	135 ELEM FUNCTIONS	LEC 3.0 PAK MTWRF 1:30PM- 2:45 ILIA203 35 0 35	9165	NURS	153W BAS NURS CONCEPT-WI	8.0 NEDERVELT M 4:30PM- 7:20 LEAH003 12 0 12	9165	NURS	153W BAS NURS CONCEPT-WI	8.0 NEDERVELT M 4:30PM- 7:20 LEAH003 12 0 12	9165	NURS	153W BAS NURS CONCEPT-WI	8.0 NEDERVELT M 4:30PM- 7:20 LEAH003 12 0 12	
		(DATES: 01-13-92 TO 02-27-92)														
7717	MATH	135 ELEM FUNCTIONS	LEC 3.0 MOWBRAY M W 7:00PM- 8:15 ILIA202 35 0 35	9166	NURS	153W BAS NURS CONCEPT-WI	8.0 STAFF M 4:30PM- 7:20 LEAH003 12 0 12	9166	NURS	153W BAS NURS CONCEPT-WI	8.0 STAFF M 4:30PM- 7:20 LEAH003 12 0 12	9166	NURS	153W BAS NURS CONCEPT-WI	8.0 STAFF M 4:30PM- 7:20 LEAH003 12 0 12	
7718	MATH	135 ELEM FUNCTIONS	LEC 3.0 KADALA T R 5:30PM- 6:45 ILIA202 35 0 35													
5760	MATH	140 TRIG + ANAL GEOM	LEC 3.0 MOWBRAY M W F 10:00AM-10:50 ILIA202 35 0 35	5164	NURS	156 ADLT HLTH NURS I	5.0 DEMELLO M W 9:15AM-12:15 KAU1205 0 0 0	5164	NURS	156 ADLT HLTH NURS I	5.0 DEMELLO M W 9:15AM-12:15 KAU1205 0 0 0	5164	NURS	156 ADLT HLTH NURS I	5.0 DEMELLO M W 9:15AM-12:15 KAU1205 0 0 0	
5761	MATH	140 TRIG + ANAL GEOM	LEC 3.0 YODER M W 2:30PM- 3:45 KAU1205 35 0 35													
5762	MATH	140 TRIG + ANAL GEOM	LEC 3.0 CHUNG T R 8:00AM- 9:15 ILIA203 35 0 35	5165	NURS	156 ADLT HLTH NURS I	5.0 TAKAZAWA M W 9:15AM-12:15 KAU1205 0 0 0	5165	NURS	156 ADLT HLTH NURS I	5.0 TAKAZAWA M W 9:15AM-12:15 KAU1205 0 0 0	5165	NURS	156 ADLT HLTH NURS I	5.0 TAKAZAWA M W 9:15AM-12:15 KAU1205 0 0 0	
5763	MATH	140 TRIG + ANAL GEOM	LEC 3.0 YODER T R 11:00AM-12:15 ILIA203 35 0 35													
7720	MATH	140 TRIG + ANAL GEOM	LEC 3.0 KADALA T R 7:00PM- 8:15 ILIA202 35 0 35	5166	NURS	156 ADLT HLTH NURS I	5.0 RICHARDSON M W 9:15AM-12:15 KAU1206 0 0 0	5166	NURS	156 ADLT HLTH NURS I	5.0 RICHARDSON M W 9:15AM-12:15 KAU1206 0 0 0	5166	NURS	156 ADLT HLTH NURS I	5.0 RICHARDSON M W 9:15AM-12:15 KAU1206 0 0 0	
5765	MATH	205 CALCULUS I	LEC 4.0 NEIDHARDT M 10:00AM-11:50 KOKI206 35 0 35													
		(DATES: 01-13-92 TO 02-27-92)														
7721	MATH	205 CALCULUS I	LEC 4.0 SWORD T R 5:30PM- 7:20 KAU1205 35 0 35	5167	NURS	156 ADLT HLTH NURS I	5.0 STAFF M W 9:15AM-12:15 KAU1205 0 0 0	5167	NURS	156 ADLT HLTH NURS I	5.0 STAFF M W 9:15AM-12:15 KAU1205 0 0 0	5167	NURS	156 ADLT HLTH NURS I	5.0 STAFF M W 9:15AM-12:15 KAU1205 0 0 0	
5766	MATH	206 CALCULUS II	LEC 4.0 YODER M 10:00AM-11:50 KAU1201 35 0 35													
		(DATES: 01-13-92 TO 02-27-92)														
5022	MEDAS	30 CLIN MED ASST	LEC 5.0 HAMADA M W F 8:00AM-11:40 KAU1110 0 0 0	5168	NURS	156 ADLT HLTH NURS I	5.0 STAFF M W 9:15AM-12:15 KAU1205 0 0 0	5168	NURS	156 ADLT HLTH NURS I	5.0 STAFF M W 9:15AM-12:15 KAU1205 0 0 0	5168	NURS	156 ADLT HLTH NURS I	5.0 STAFF M W 9:15AM-12:15 KAU1205 0 0 0	
5023	MEDAS	31 MED LAW & ETHICS	LEC 2.0 HAMADA F 1:30PM- 3:20 KAU1109 0 0 0													
5024	MEDAS	32 ADMIN MEDAS	LEC 5.0 YOUNG M W F 8:30AM-11:30 KAU1109 0 0 0	5195	NURS	156 ADLT HLTH NURS I	5.0 STAFF M W 9:15AM-12:15 KAU1205 0 0 0	5195	NURS	156 ADLT HLTH NURS I	5.0 STAFF M W 9:15AM-12:15 KAU1205 0 0 0	5195	NURS	156 ADLT HLTH NURS I	5.0 STAFF M W 9:15AM-12:15 KAU1205 0 0 0	
5026	MEDAS	40C ADV MED ASST	LEC 1.0 HAMADA T R 8:30AM-11:30 KAU1110 0 0 0													
		(DATES: 03-12-92 TO 05-07-92)														
5027	MEDAS	41 CRITIQUE	LEC 2.0 YOUNG F 1:30PM- 3:20 KAU1110 0 0 0	5169	NURS	157 ADLT HLTH NURS II	5.0 DEMELLO M W 9:15AM-12:15 KAU1205 0 0 0	5169	NURS	157 ADLT HLTH NURS II	5.0 DEMELLO M W 9:15AM-12:15 KAU1205 0 0 0	5169	NURS	157 ADLT HLTH NURS II	5.0 DEMELLO M W 9:15AM-12:15 KAU1205 0 0 0	
9002	MEDAS	42 EXTERNSHIP	LAB 10.0 YOUNG ARR OFF CAMP 0 0 0													
5239	MGT	18 INTR TO SUPERVSN	LEC 3.0 BRADY T R 11:00AM-12:15 ILIA105 35 0 35	5170	NURS	157 ADLT HLTH NURS II	5.0 TAKAZAWA M W 9:15AM-12:15 KAU1205 0 0 0	5170	NURS	157 ADLT HLTH NURS II	5.0 TAKAZAWA M W 9:15AM-12:15 KAU1205 0 0 0	5170	NURS	157 ADLT HLTH NURS II	5.0 TAKAZAWA M W 9:15AM-12:15 KAU1205 0 0 0	
		(DATES: 01-08-92 TO 02-21-92)														
5836	MICRO	130 GEN MICROBIOLOGY	LEC 3.0 BERESTECKY M W 7:30AM- 8:45 B 003 35 0 35	5171	NURS	157 ADLT HLTH NURS II	5.0 RICHARDSON M W 9:15AM-12:15 KAU1206 0 0 0	5171	NURS	157 ADLT HLTH NURS II	5.0 RICHARDSON M W 9:15AM-12:15 KAU1206 0 0 0	5171	NURS	157 ADLT HLTH NURS II	5.0 RICHARDSON M W 9:15AM-12:15 KAU1206 0 0 0	
5837	MICRO	130 GEN MICROBIOLOGY	LEC 3.0 BRILLIANDE T R 9:30AM-10:45 B 003 35 0 35													
5838	MICRO	130 GEN MICROBIOLOGY	LEC 3.0 BRILLIANDE T R 2:00PM- 3:15 KOKI206 35 0 35	5172	NURS	157 ADLT HLTH NURS II	5.0 STAFF M W 9:15AM-12:15 KAU1205 0 0 0	5172	NURS	157 ADLT HLTH NURS II	5.0 STAFF M W 9:15AM-12:15 KAU1205 0 0 0	5172	NURS	157 ADLT HLTH NURS II	5.0 STAFF M W 9:15AM-12:15 KAU1205 0 0 0	
7806	MICRO	130 GEN MICROBIOLOGY	LEC 3.0 GRECO M W 5:30PM- 6:45 B 003 35 0 35													
7807	MICRO	130 GEN MICROBIOLOGY	LEC 3.0 BERESTECKY T R 5:30PM- 6:45 OHEL124 35 0 35	5173	NURS	157 ADLT HLTH NURS II	5.0 STAFF M W 9:15AM-12:15 KAU1205 0 0 0	5173	NURS	157 ADLT HLTH NURS II	5.0 STAFF M W 9:15AM-12:15 KAU1205 0 0 0	5173	NURS	157 ADLT HLTH NURS II	5.0 STAFF M W 9:15AM-12:15 KAU1205 0 0 0	
5839	MICRO	140 MICROBIOLOGY LAB	2.0 BERESTECKY M W 1:30PM- 3:20 C 003 20 0 20													
5840	MICRO	140 MICROBIOLOGY LAB	2.0 BERESTECKY M W 3:30PM- 5:20 C 003 20 0 20	5196	NURS	157 ADLT HLTH NURS II	5.0 STAFF M W 9:15AM-12:15 KAU1205 0 0 0	5196	NURS	157 ADLT HLTH NURS II	5.0 STAFF M W					



Class Crs	LEC	MEETING	Max Cur	STS	Class Crs	LEC	MEETING	Max Cur	STS
Code Dept	CRSNO Title	LAB UNIT INSTRUCTOR DAYS TIME (S) Room	Enr	Enr	Code Dept	CRSNO Title	LAB UNIT INSTRUCTOR DAYS TIME (S) Room	Enr	Enr
5309 OAT	22B KEYBOARD SKILLBUILDING (DATES: 03-10-92 TO 05-07-92)	2.0 TAKETA T R 8:00AM-9:40 J 001	30	0 30	7009 PTA	225 PEDIATRICS/PTA	1.0 STAFF T 5:50PM-8:00 KAU1207	0	0 0
5310 OAT	23 INTER TYPEWRIT	3.0 OGAWA T R 11:00AM-12:15 G 002	30	0 30	5057 PTA	230 DISEASE & DISABI	3.0 MILLER T R 2:30PM-4:00 NAI0110	0	0 0
5311 OAT	30 INFO PROCESSING	3.0 HARRIS M W F 8:00AM-9:40 H 004	30	0 30	5052 PTA	235 THERA MODAL II	4.0 YAP T R 10:00AM-12:00 KAU1207	0	0 0
8301 OAT	30 INFO PROCESSING	3.0 STAFF S 8:00AM-11:20 H 004	21	0 21	5053 PTA	235L THERA MOD II LAB	3.0 YAP M 8:00AM-12:00 KAU1208	0	0 0
5325 OAT	31 INFO PROC APPL	3.0 NAKAMURA T R 9:30AM-11:35 H 004	21	0 21			YAP M 1:30PM-6:30 KAU1208		
5312 OAT	33 OFFC AUTOMATION	3.0 MILLER W F 12:00PM-1:15 H 004	30	0 30	5054 PTA	235L THERA MOD II LAB	3.0 YAP F 8:00AM-12:00 KAU1208	0	0 0
5313 OAT	38 SPDSHEET/DBASE	LEC 3.0 HARADA T R 12:30PM-1:45 J 001	19	0 19			YAP F 1:00PM-6:00 KAU1208		
7301 OAT	38 SPDSHEET/DBASE	LEC 3.0 HARADA T R 5:30PM-6:45 H 004	30	0 30	9026 PTA	250 CLIN PRAC/SEM II	4.0 MILLER ARR OFF CAMP	0	0 0
5314 OAT	40B FILING	2.0 OGAWA T R 9:30AM-10:20 G 002	30	0 30			MILLER T 1:00PM-2:00 KAU1207		
5315 OAT	43 PROFESSIONAL DEV	3.0 ZUERCHER M W F 8:00AM-8:50 D 001	30	0 30	5770 QM	250 APPL MATH IN BUS	LEC 3.0 NEIDHARDT M W F 1:30PM-2:20 KOKI205	35	0 35
5326 OAT	53 OFFICE SIMULAT	4.0 MILLER M W F 10:00AM-11:40 H 004	30	0 30	5771 QM	250 APPL MATH IN BUS	LEC 3.0 NEIDHARDT T R 9:30AM-10:45 ILIA202	35	0 35
5316 OAT	55 LEGAL OFC PRO II	4.0 OGAWA T R 12:30PM-3:00 H 004	30	0 30	7722 QM	250 APPL MATH IN BUS	LEC 3.0 PAK M W 5:30PM-6:45 ILIA203	35	0 35
5317 OAT	60 BEGIN SYMB SHTHD	5.0 HARRIS M W F 10:00AM-11:30 G 001	30	0 30	5060 RAD	110 RAD TECH	LEC 3.0 CLEMENTS T R 1:30PM-2:45 KAU1104	0	0 0
5318 OAT	62 INT SYM SHTHD	4.0 TAKETA M W F 8:00AM-9:30 G 002	30	0 30	5061 RAD	110L RAD TECH LAB	LAB 1.0 CLEMENTS T 3:00PM-6:00 KAU1104	0	0 0
5319 OAT	64 ADV SYM SHTHD	4.0 TAKETA M W F 8:00AM-9:30 G 002	30	0 30	5062 RAD	110L RAD TECH LAB	LAB 1.0 NAKAYAMA T 3:00PM-6:00 KAU1105	0	0 0
5320 OAT	67 ABBREVIATED WRTG	2.0 HARRIS T R 11:00AM-11:50 G 001	30	0 30	5090 RAD	110L RAD TECH LAB	LAB 1.0 STAFF T 3:00PM-6:00 KAU1103	0	0 0
7303 OAT	74 MCH SMD/SKL RD I	4.0 OGAWA M W 5:30PM-8:00 H 004	21	0 21	7020 RAD	110L RAD TECH LAB	LAB 1.0 STAFF T 6:00PM-9:00 KAU1104	0	0 0
7304 OAT	76 MCH SH/SKRLDIII	4.0 STRICKLAND M W 5:30PM-8:00 J 001	30	0 30	7021 RAD	110L RAD TECH LAB	LAB 1.0 NAKAYAMA T 6:00PM-9:00 KAU1105	0	0 0
5321 OAT	80 MACH TRNSC I	2.0 HARRIS T R 8:00AM-8:50 G 001	30	0 30	5063 RAD	120 RAD PHYSICS	LEC 3.0 CLEMENTS M W F 10:00AM-10:50 KAU1104	0	0 0
5323 OAT	83 MEDICAL TRNSC	3.0 OGAWA M W 3:00PM-4:15 H 004	30	0 30	9031 RAD	141 HOSP RAD TECH	LAB 6.0 NAKAYAMA M W F 1:00PM-5:00 OFF CAMP	0	0 0
5324 OAT	93V COOPERATIVE EDUC	v 4.0 MILLER M 8:00AM-8:50 G 001	15	0 15			NAKAYAMA T R 7:00AM-12:30 OFF CAMP		
5835 OCEAN	201 SCIENCE OF SEA	LEC 3.0 VOYCE M W 9:00AM-10:15 0933103	35	0 35	5064 RAD	149 RAD FILM CRITIQ	LEC 1.0 CLEMENTS R 3:00PM-3:50 KAU1104	0	0 0
7805 OCEAN	201 SCIENCE OF SEA	LEC 3.0 FIRING M W 5:30PM-6:45 0933104	35	0 35	5069 RAD	220 DEPARTMENT ADMIN	LEC 1.0 CLEMENTS F 2:30PM-3:20 KAU1104	0	0 0
5040 OTA	102 PHYSICAL DYSFUNC	LEC 4.0 KADOGUCHI M W 10:00AM-11:50 KAU1207	0	0 0	5066 RAD	230L SPEC RAD PROC LA	LAB 1.0 CLEMENTS W 2:30PM-5:30 KAU1104	0	0 0
9017 OTA	105B PHYS DYS FW I	LAB 1.0 PAUL-WATANABE ARR OFF CAMP	0	0 0	5067 RAD	230L SPEC RAD PROC LA	LAB 1.0 NAKAYAMA W 2:30PM-5:30 KAU1105	0	0 0
9018 OTA	105C PEDIATRICS FW I	LAB 1.0 PAUL-WATANABE ARR OFF CAMP	0	0 0	7024 RAD	230L SPEC RAD PROC LA	LAB 1.0 CLEMENTS W 5:30PM-8:30 KAU1104	0	0 0
9019 OTA	105D PSY-SOC DYS FW I	LAB 1.0 PAUL-WATANABE ARR OFF CAMP	0	0 0	7025 RAD	230L SPEC RAD PROC LA	LAB 1.0 NAKAYAMA W 5:30PM-8:30 KAU1105	0	0 0
5041 OTA	112 CRITIQUE: FW I	LEC 1.0 PAUL-WATANABE F 1:00PM-1:50 KAU1207	0	0 0	5065 RAD	230W SPEC RAD PROC-WI	3.0 CLEMENTS M W F 1:30PM-2:30 KAU1104	0	0 0
5042 OTA	122 THER ACTIVITIES	LEC 2.0 KADOGUCHI T 1:00PM-5:00 KAU1210	0	0 0	9034 RAD	241 HOSP RAD TECH	LAB 6.0 NAKAYAMA M W F 7:00PM-12:00 OFF CAMP	0	0 0
5043 OTA	122 THER ACTIVITIES	LEC 2.0 PAUL-WATANABE T 1:00PM-5:00 KAU1210	0	0 0			NAKAYAMA R 12:00PM-5:00 OFF CAMP		
5044 OTA	132 LIFE SKILL LAB I	LEC 2.0 KADOGUCHI F 8:00AM-12:00 KAU1210	0	0 0	5068 RAD	249 RAD FILM CRITIQ	LEC 1.0 CLEMENTS M 2:30PM-3:20 KAU1104	0	0 0
5045 OTA	132 LIFE SKILL LAB I	LEC 2.0 PAUL-WATANABE F 8:00AM-12:00 KAU1210	0	0 0	5070 RAD	255 APP RAD PRIN	LEC 1.0 CLEMENTS ARR KAU1104	0	0 0
5046 OTA	204 PSYCHO-SOC DYS	LEC 5.0 PAUL-WATANABE M 1:30PM-4:30 KAU1207	0	0 0	5599 REL	150 INTRO WORLD REL	LEC 3.0 WALL M W F 8:00AM-8:50 KALI237	35	0 35
	(DATES: 01-15-92 TO 04-17-92)	PAUL-WATANABE R 1:00PM-4:00 KAU1207			6501 REL	150 INTRO WORLD REL	LEC 3.0 MOLLOY M W F 2:30PM-3:20 KALI237	35	0 35
9020 OTA	205B PHYS DYS FW I	LAB 1.0 KADOGUCHI ARR OFF CAMP	0	0 0	6502 REL	150 INTRO WORLD REL	LEC 3.0 MOLLOY M W F 3:30PM-4:20 KALI237	35	0 35
	(DATES: 01-15-92 TO 04-17-92)				6503 REL	150 INTRO WORLD REL	LEC 3.0 MOLLOY T R 2:00PM-3:15 KALI237	35	0 35
9021 OTA	205C PEDIATRICS FW II	LAB 1.0 KADOGUCHI ARR OFF CAMP	0	0 0	6504 REL	150 INTRO WORLD REL	LEC 3.0 WALL T R 2:00PM-3:15 KOA 102	35	0 35
	(DATES: 01-15-92 TO 04-17-92)				6505 REL	150 INTRO WORLD REL	LEC 3.0 WALL T R 3:30PM-4:45 KALI237	35	0 35
9022 OTA	205D PSY-SOC DYS FW II	LAB 1.0 KADOGUCHI ARR OFF CAMP	0	0 0	7513 REL	150 INTRO WORLD REL	LEC 3.0 MOLLOY M W 7:00PM-8:15 KALI237	35	0 35
	(DATES: 01-15-92 TO 04-17-92)				8504 REL	150 INTRO WORLD REL	LEC 3.0 SWINGLE S 10:15AM-1:05 KOA 102	35	0 35
5047 OTA	214 CRITIQUE: FW I	LEC 1.0 KADOGUCHI F 2:00PM-2:50 KAU1207	0	0 0	6500 REL	151 REL MEAN EXIST	LEC 3.0 WALL M W F 9:00AM-9:50 KALI237	35	0 35
	(DATES: 01-15-92 TO 04-17-92)				6506 REL	201 NEW TESTAMENT	LEC 3.0 MOLLOY T R 12:30PM-1:45 KALI237	35	0 35
5048 OTA	234 LIF SKILL LAB II	LEC 2.0 KADOGUCHI W 1:00PM-6:00 KAU1210	0	0 0	9042 RESP	120 CLIN PRAC I	5.0 WEHRMAN T R 7:00AM-3:00 KAU1217	0	0 0
	(DATES: 01-15-92 TO 04-17-92)				9043 RESP	120 CLIN PRAC I	5.0 MITO T R 3:00PM-11:00 KAU1217	0	0 0
5049 OTA	234 LIF SKILL LAB II	LEC 2.0 PAUL-WATANABE W 1:00PM-6:00 KAU1210	0	0 0	5072 RESP	123 RESP CARE TCH II	3.0 MITO M 8:00AM-11:00 KAU1217	0	0 0
	(DATES: 01-15-92 TO 04-17-92)				5073 RESP	126 RESP CARE SCI II	3.0 WEHRMAN M 1:30PM-4:30 KAU1216	0	0 0
5050 OTA	256 OTA IN THE COMM	3.0 KADOGUCHI M W 7:30AM-9:00 KAU1207	0	0 0	5074 RESP	127 CARDIO PATHOPHYS	2.0 KOSEKI W 2:30PM-4:20 KAU1217	20	0 20
	(DATES: 01-15-92 TO 04-17-92)				5075 RESP	129 PULMONARY DIAG	LEC 4.0 MITO W 7:30AM-2:00 KAU1217	20	0 20
9023 OTA	260 FIELD WORK II	LAB 3.0 PAUL-WATANABE ARR OFF CAMP	0	0 0	5080 RESP	213 NEO/PED RESP CAR	3.0 STAFF W 1:00PM-4:00 KAU1216	0	0 0
	(DATES: 04-20-92 TO 05-29-92)				9048 RESP	220 CLIN PRAC V	5.0 STAFF T R 7:00AM-3:00 OFF CAMP	0	0 0
5140 PHARM	203 PHARMACOLOGY	3.0 PANG T 4:00PM-6:30 KAU1206	0	0 0	9049 RESP	220 CLIN PRAC V	5.0 STAFF T R 3:00PM-11:00 OFF CAMP	0	0 0
		PANG R 4:00PM-4:40 KAU1201			5083 RESP	226 ADV CARDIO PATHO	2.0 WEHRMAN W 10:00AM-12:00 KAU1216	0	0 0
5141 PHARM	203 PHARMACOLOGY	3.0 MEDEIROS T R 4:00PM-5:15 KAU1206	0	0 0	6628 RUS	102 ELEM RUSSIAN II	4.0 DANKEVICH MTWRF 1:30PM-2:20 I 004	25	0 25
		MEDEIROS R 4:40PM-5:20 KAU1201			6629 SAMOA	102 ELEM SAMOAN II	4.0 STAFF MTWRF 3:30PM-4:20 I 004	25	0 25
5142 PHARM	203 PHARMACOLOGY	3.0 INOUE T 4:00PM-5:20 KAU1205	0	0 0	5890 SCI	21 INTRO TO NAT SCI	LEC 3.0 CHUNG T R 11:00AM-12:15 KAU1206	35	0 35
		INOUE R 5:20PM-6:00 KAU1201			5852 SCI	121 INTRO SCI: BIOL	LEC 3.0 SNIDER M W F 8:00AM-8:50 B 002	35	0 35
5143 PHARM	203 PHARMACOLOGY	3.0 KUDO T R 4:00PM-5:15 KAU1205	0	0 0	5853 SCI	121 INTRO SCI: BIOL	LEC 3.0 SNIDER T R 8:00AM-9:15 KAU1206	35	0 35
		KUDO R 6:00PM-6:40 KAU1201			5854 SCI	121 INTRO SCI: BIOL	LEC 3.0 SNIDER T R 2:00PM-3:15 B 002	35	0 35
5594 PHIL	100 INTRO TO PHIL	LEC 3.0 FUJIKAWA M W F 10:00AM-10:50 KALI237	35	0 35	7812 SCI	121 INTRO SCI: BIOL	LEC 3.0 CHUNG T R 5:30PM-6:45 933 201	35	0 35
5595 PHIL	100 INTRO TO PHIL	LEC 3.0 FUJIKAWA M W F 11:00AM-11:50 KALI237	35	0 35	5855 SCI	121L INTRO BIOL LAB	LAB 1.0 SNIDER T 9:30AM-12:20 C 003	20	0 20
7512 PHIL	100 INTRO TO PHIL	LEC 3.0 WALL T R 5:30PM-6:45 KALI237	35	0 35	5856 SCI	121L INTRO BIOL LAB	LAB 1.0 CHUNG R 12:30PM-3:20 C 003	20	0 20
5596 PHIL	102 ASIAN PHIL	LEC 3.0 FUJIKAWA M W F 1:30PM-2:20 KALI237	35	0 35	5857 SCI	122 INTRO SCI: PHYS	LEC 3.0 STAFF M W 2:30PM-3:45 KOKI205	35	0 35
5597 PHIL	110 INTRO TO LOGIC	LEC 3.0 YAMAMOTO T R 8:00AM-9:15 KALI238	35	0 35	5858 SCI	122 INTRO SCI: PHYS	LEC 3.0 STAFF T R 2:00PM-3:15 KOKI205	35	0 35
5598 PHIL	110 INTRO TO LOGIC	LEC 3.0 FUJIKAWA T R 11:00AM-12:15 KALI237	35	0 35	7813 SCI	122 INTRO SCI: PHYS	LEC 3.0 STAFF M W 5:30PM-6:45 KOKI207	35	0 35
5844 PHYS	100 SURVEY OF PHYS	LEC 3.0 BAUTISTA M W F 10:00AM-10:50 KOKI207	35	0 35	5859 SCI	122L PHYS SCI LAB	LAB 1.0 STAFF T 11:00AM-1:50 KOKI207	20	0 20
5845 PHYS	100 SURVEY OF PHYS	LEC 3.0 BAUTISTA T R 12:30PM-1:45 KOKI205	35	0 35	7814 SCI	122L PHYS SCI LAB	LAB 1.0 STAFF M 7:00PM-9:50 KOKI207	20	0 20
7810 PHYS	100 SURVEY OF PHYS	LEC 3.0 STAFF T R 5:30PM-6:45 KOKI207	35	0 35	7827 SCI	124 TECH ECOLOGY MAN	LEC 3.0 CHUNG T R 7:00PM-8:15 933 201	35	0 35
5846 PHYS	100L PHYSICS LAB	LAB 1.0 STAFF R 11:00AM-1:50 KOKI207	20	0 20	7210 SMKT	20 MARKETING	LEC 3.0 BRADY M W 5:30PM-6:45 ILIA105	35	0 35
5847 PHYS	100L PHYSICS LAB	LAB 1.0 STAFF R 2:00PM-4:50 KOKI207	20	0 20	5241 SMKT	30 RETAILING	LEC 3.0 BRADY T R 2:00PM-3:15 ILIA103	35	0 35
7811 PHYS	100L PHYSICS LAB	LAB 1.0 STAFF T 7:00PM-9:50 KOKI207	20	0 20	7211 SMKT	50 SELLING	LEC 3.0 CAMPBELL T R 5:30PM-6:45 ILIA105	35	0 35
5848 PHYS	151 COLLEGE PHYSICS	LEC 3.0 BAUTISTA T R 9:30AM-10:45 KOKI205	35	0 35	5242 SMKT	60 ADVERTISING	LEC 3.0 DAVIS M W F 10:00AM-10:50 ILIA105	35	0 35
5849 PHYS	151L COLL PHYS LAB I	1.0 BAUTISTA F 1:30PM-4:20 KOKI207	20	0 20	5243 SMKT	60L ADVERTISING LAB	LEC 1.0 DAVIS M W F 11:00AM-11:50 ILIA105	20	0 20
5850 PHYS	152 COLL PHYS II	3.0 BAUTISTA M W F 11:00AM-11:50 KOKI207	35	0 35	5240 SMKT	93V COOPER ED	v 3.0 DAVIS W 12:00PM-1:15 ILIA105	15	0 15
5851 PHYS	152L COLL PHYS LAB II	1.0 BAUTISTA W 1:30PM-4:20 KOKI207	20	0 20	5950 SOC	100 SURV OF GEN SOC	LEC 3.0 HIGAKI M W F 8:00AM-8:50 A 001	35	0 35
5931 POLSC	110 INTO TO POLSC	LEC 3.0 STAFF M W F 8:00AM-8:50 0933202	35	0 35	5951 SOC	100 SURV OF GEN SOC	LEC 3.0 HIGAKI M W F 9:00AM-9:50 A 001	35	0 35
5933 POLSC	110 INTO TO POLSC	LEC 3.0 STAFF T R 12:30PM-1:45 0933206	35	0 35	5952 SOC	100 SURV OF GEN SOC	LEC 3.0 MODAVI M W F 1:30PM-2:20 0933202	35	0 35
7906 POLSC	110 INTO TO POLSC	LEC 3.0 FUKUNAGA M W 5:30PM-6:45 0933204	35	0 35	5953 SOC	100 SURV OF GEN SOC	LEC 3.0 HIGAKI T R 11:00AM-12:15 B 003	35	0 35
5932 POLSC	110W INT TO POLSC-WI	3.0 FUKUNAGA T R 8:00AM-9:15 0933206	20	0 20	5955 SOC	100 SURV OF GEN SOC	LEC 3.0 MODAVI T R 2:00PM-3:15 0933202	35	0 35
5935 PSY	100 SURVEY OF PSY	LEC 3.0 EDMAN M W F 8:00AM-8:50 0933201	35	0 35	7910 SOC	100 SURV OF GEN SOC	LEC 3.0 MODAVI M W 5:30PM-6:45 0933202	35	0 35
5936 PSY	100 SURVEY OF PSY	LEC 3.0 BECKER M W F 9:00AM-9:50 0933201	35	0 35	5956 SOC	218 INTRO SOC PROB	3.0 MANN T R 3:30PM-4:45 0933201	35	0 35
5937 PSY	100 SURVEY OF PSY	LEC 3.0 EDMAN M W F 10:00AM-10:50 0933201	35	0 35	7911 SOC	231 JUVENILE DELIN	LEC 3.0 MANN T R 5:30PM-6:45 0933204	35	0 35
5938 PSY	100 SURVEY OF PSY	LEC 3.0 EDMAN M W F 1:30PM-2:20 0933201	35	0 35	5957 SOC	251 INTRO TO SOC FAM	3.0 MANN W F 12:00PM-1:15 0933204	35	0 35
5939 PSY	100 SURVEY OF PSY	LEC 3.0 EDMAN M W F 2:30PM-3:20 0933201	35	0 35	5958 SOC	251 INTRO TO SOC FAM	3.0 MANN T R 11:00AM-12:15 0933204	35	0 35
5940 PSY	100 SURVEY OF PSY	LEC 3.0 RENNER M W 3:30PM-4:45 0933201	35	0 35	5959 SOC	257 SOC OF AGING	3.0 HIGAKI T R 9:30AM-10:45 A 001	35	0 35
5941 PSY	100 SURVEY OF PSY	LEC 3.0 LACEY T R 8:00AM-9:15 0933201	35	0 35	6630 SP	51 ORAL COMMUN	LEC 3.0 TOGUCHI M W F 10:00AM-10:50 I 002	25	0 25
5942 PSY	100 SURVEY OF PSY	LEC 3.0 RENNER T R 9:30AM-10:45 0933201	35	0 35	7627 SP	51 ORAL COMMUN	LEC 3.0 HOLLAND T R 5:00PM-6:15 KAU1107	25	0 25
5943 PSY	100 SURVEY OF PSY	LEC 3.0 LACEY T R 12:30PM-1:45 0933201	35	0 35	6631 SP	151 PERSONAL/PUB SP	LEC 3.0 HOLLAND M W F 8:00AM-8:50 I 002	25	0 25
5944 PSY	100 SURVEY OF PS								



# What it's like to be in a world without sound

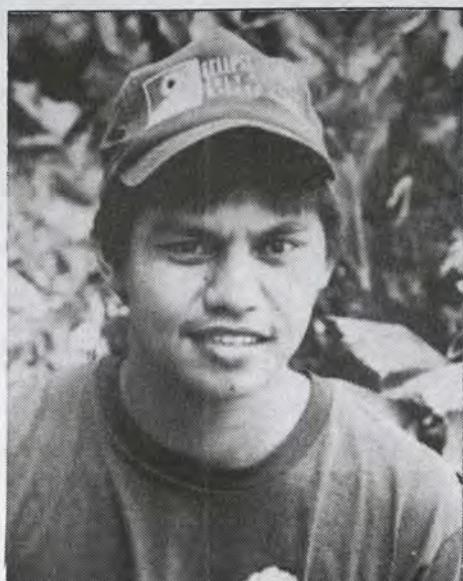
By Debbie Yamao

My first interview with Eric Delapena was conducted with the aid of an interpreter. It was very fascinating to see how fast they were signing to each other. The interpreter would sign faster than I spoke, and often times wait for my next phrase.

Our second interview was done one on one, with Delapena and myself writing questions and answers which were very frank and honest. By reading the answers, I understood what he meant on the difference of our speech pattern and the sign language. Delapena wrote sentences without adjectives and connectives; he was dealing primarily with the subject and predicate. I was very interested in watching him sign to himself at times as he constructed the sentences. This is similar to us talking to ourselves when we're stumped. I also learned that as much as we are curious about the deaf people, Delapena is curious about us, who are able to hear.

Eric Delapena may appear to be like the average KCC student, who is in his second term, majoring in Data Processing, but he's special. Delapena was born deaf. All of us take the sense of hearing so much for granted that we don't realize how dependent we become on everyday sounds. For instance, most students probably couldn't make it to school without the sound of an alarm.

Delapena uses different means to communicate and "listen." Carrying out a regular



Eric Delapena

Photo by Debbie Yamao

conversation with a friend is done in sign language. He reads people's feelings by looking at their expressions, something people forget to do at times. He hears the wonderful sound of Rock-n-Roll by feeling the vibrations, or if the music is loud enough, the base of the music.

Delapena seems perfectly happy being a student here at KCC. He attends classes with the help of his interpreters. Delapena says KCC provides him with a schedule that works out fine, and he has not come across any problems so far. Delapena has made friends with the other deaf students here at KCC, and they confer with each other and help one another.

If he wants to communicate with another student he simply writes notes back and forth.

Delapena says there are times when he needs to talk about vocabulary words in class; in this case, the interpreter helps him out.

Delapena, like the other deaf students, has difficulty with English. The ordinary language pattern is like a second language to them. The syntax in American Sign Language (ASL) differs from ordinary speech in many ways. For instance, the ASL is a condensed version of the sentences without tenses and prepositions. Delapena says that "the (English) sentences are very long." Because sign language is designed as a simple way of communicating, most deaf students have a very low vocabulary. So, for Delapena to read a simple book, he must decipher the words as well as the sentence form. It is like us trying to read a foreign book.

Delapena prefers working with numbers, so much so, he is taking Precalculus at the time. To Delapena, numbers are straight forward problems that are not confusing.

Delapena is not only good in school, but also very athletic. He has been on the volleyball team for the deaf at the Gallaudet University in Washington D.C. He attended the Gallaudet for three years as a Computer Science major, but transferred to KCC because he felt the Gallaudet's teaching was not up to his standard. Also, he missed the warm weather in Hawaii terribly.

Through the volleyball club, he had the

opportunity to travel extensively in Europe. The most exciting part of his trip, says Delapena, was in Moscow. He was part of the USA Deaf team playing against the Leningrad deaf volleyball team. Although he wanted very much to become friends with the other team members, he had a communication block. He did not understand their sign language. Contrary to belief, sign language is not universal; in fact, it's different all over the world. Delapena says the teammates communicated by gesturing. Delapena's experience through this trip was that people are different everywhere. He found the trip very exciting, but was bothered to find people begging tourists for money, jewelry and even clothes. He found the long line at McDonald's amusing.

Delapena's life is very similar to that of the average student. He likes to get together with his friends and play sports. His favorite is of course volleyball, but he actively participates in other sports as well. He would like to pursue volleyball, and hopefully be part of the US Volleyball Federation team for the deaf.

He also likes to go to the movies. Delapena likes action films; movies without too much dialogue. His favorite is "Blood Sport," a karate movie which is his favorite type.

He watches T.V. through the use of Closed Caption and calls his friends on the phone through the use of TDD. TDD is a system run by the Hawaiian Telephone Company where the sender types in his message. If the receiver does not have the TDD system, there is an interpreter on the line to voice out the message.



THE PACIFIC RIM FOUNDATION  
PRESENTS

AN INTERNATIONAL AFFAIRS SPEAKER PROGRAM

Inviting you to free public lectures at  
KAPI'OLANI COMMUNITY COLLEGE

"Japanese Language & Script—  
Myths from East & West"

by James Marshall Unger  
Monday, November 4  
12 noon

'Ilima Building Rooms 202 A, B, and C

Upcoming Speaker:

December 2 - Admiral Lloyd Vasey  
"Strategic Change in East Asia"

Class Crs			LEC	MEETING			Max Cur STS			
Code	Dept	CRSN	Unit	INSTRUCTOR	DAYS	TIME (S)	Room	Enr	Enr	REM
6641	SP	200	SPKG SKILL-TCRS	3.0	TOGUCHI	W F	12:00PM-1:15 I	002	25	0 25
6642	SP	231	INTERPRTV RDNG	LEC	3.0 KASHIWADA	M W F	11:00AM-11:50 I	002	25	0 25
6643	SP	251	PRIN EFFECT SPKG	LEC	3.0 JOHNSON	M W F	2:30PM-3:20 I	002	25	0 25
6644	SPAN	101	BEG SPANISH	LEC	4.0 DABROWSKI	MTWRF	8:00AM-8:50 ILIA204	25	0 25	
6645	SPAN	102	ELEM SPAN II	LEC	4.0 BEREZINSKY	MTWRF	9:00AM-9:50 ILIA204	25	0 25	
6646	SPAN	202	INT SPAN II		3.0 DABROWSKI	W F	12:00PM-1:15 ILIA204	25	0 25	
5961	SSCI	21	INTRO TO SOC SCI		3.0 HIGAKI	W F	12:00PM-1:15 A	001	35	0 35
5962	SSCI	120	HAWAII'S PEOPLE	LEC	3.0 FUKUNAGA	T R	11:00AM-12:15 A	002	35	0 35
5963	SSCI	120	HAWAII'S PEOPLE	LEC	3.0 FEARRIEN	T R	11:00AM-12:15 A	001	35	0 35
6647	TAG	102	ELEM TAGALOG II		4.0 STAFF	MTWRF	2:30PM-3:20 I	004	25	0 25
5860	ZOOL	101	PRIN OF ZOOLOGY		3.0 MATSUDA	W F	12:00PM-1:15 B	002	35	0 35
7815	ZOOL	101	PRIN OF ZOOLOGY		3.0 MATSUDA	M W	5:30PM-6:45 KOKI205	35	0 35	
5861	ZOOL	101L	PRIN OF ZOO LAB	LAB	1.0 CHUNG	T	12:30PM-3:20 C	003	20	0 20
5862	ZOOL	141	HUMAN ANAT/PHYS		3.0 UNO	M W F	10:00AM-10:50 B	003	35	0 35
5863	ZOOL	141	HUMAN ANAT/PHYS		3.0 LEE-ROBINSON	M W F	11:00AM-11:50 B	003	35	0 35
5864	ZOOL	141	HUMAN ANAT/PHYS		3.0 DUNN	W F	12:00PM-1:15 KOKI207	35	0 35	
5865	ZOOL	141	HUMAN ANAT/PHYS		3.0 BUSHNELL	T R	8:00AM-9:15 KOKI205	35	0 35	
5866	ZOOL	141	HUMAN ANAT/PHYS		3.0 UNO	T R	12:30PM-1:45 B	003	35	0 35
7816	ZOOL	141	HUMAN ANAT/PHYS		3.0 MATSUDA	M W	7:00PM-8:15 KOKI205	35	0 35	
7817	ZOOL	141	HUMAN ANAT/PHYS		3.0 UNO	T R	5:30PM-6:45 B	003	35	0 35
5869	ZOOL	141L	HUM ANAT/PHYS L		1.0 LEE-ROBINSON	W	8:00AM-10:50 H	002	20	0 20
5872	ZOOL	141L	HUM ANAT/PHYS L		1.0 UNO	F	12:00PM-2:50 H	002	20	0 20
5873	ZOOL	141L	HUM ANAT/PHYS L		1.0 UNO	R	2:00PM-4:50 H	002	20	0 20
5884	ZOOL	141L	HUM ANAT/PHYS L		1.0 MATSUDA	M	2:00PM-4:50 H	002	20	0 20
7818	ZOOL	141L	HUM ANAT/PHYS L		1.0 UNO	T	7:00PM-9:50 H	002	20	0 20
7830	ZOOL	141L	HUM ANAT/PHYS L		1.0 BUSHNELL	W	7:00PM-9:50 H	002	20	0 20
5875	ZOOL	142	HUMAN ANAT/PHYS		3.0 FEE	M F	10:00AM-11:15 A	002	35	0 35
5876	ZOOL	142	HUMAN ANAT/PHYS		3.0 BUSHNELL	W F	12:00PM-1:15 B	003	35	0 35
5877	ZOOL	142	HUMAN ANAT/PHYS		3.0 FEE	T R	12:30PM-1:45 B	002	35	0 35
5878	ZOOL	142	HUMAN ANAT/PHYS		3.0 STAFF	T R	2:00PM-3:15 KAU1108	35	0 35	
7820	ZOOL	142	HUMAN ANAT/PHYS		3.0 BUSHNELL	M W	5:30PM-6:45 KOKI206	35	0 35	
7821	ZOOL	142	HUMAN ANAT/PHYS		3.0 MILHOAN	T R	5:30PM-6:45 933 202	20	0 20	
5880	ZOOL	142L	HUM ANAT/PHYS L		1.0 FEE	W	11:00AM-1:50 H	002	20	0 20
5881	ZOOL	142L	HUM ANAT/PHYS L		1.0 FEE	T	8:00AM-10:50 H	002	20	0 20
5882	ZOOL	142L	HUM ANAT/PHYS L		1.0 FEE	R	8:00AM-10:50 H	002	20	0 20
5883	ZOOL	142L	HUM ANAT/PHYS L		1.0 SNIDER	R	11:00AM-1:50 H	002	20	0 20
5896	ZOOL	142L	HUM ANAT/PHYS L		1.0 BUSHNELL	M	8:00AM-10:50 H	002	20	0 20
7822	ZOOL	142L	HUM ANAT/PHYS L		1.0 BUSHNELL	M	7:00PM-9:50 H	002	20	0 20
7823	ZOOL	142L	HUM ANAT/PHYS L		1.0 MILHOAN	R	7:00PM-9:50 H	002	20	0 20
9151	EMT	100	PRE-HOS EM CARE (DATES: 01-13-92 TO 02-21-92)		9.0 AH YO	DAILY	8:30AM-2:30 OFF CAMP	20	0 20	
9152	EMT	101	PRE-HOS CARE PRA (DATES: 02-24-92 TO 04-03-92)		3.0 AH YO	ARR	OFF CAMP	20	0 20	
9153	MICT	150	PRE-HOSP ASS		10.0 UPTON	M W F	9:00AM-3:00 OFF CAMP	20	0 20	
9157	MICT	202	PRE-HOSP ASSES I (DATES: 02-24-92 TO 03-29-92)		4.0 ARAKAKI	ARR	OFF CAMP	20	0 20	
9158	MICT	250	PRE-HOSP ASS II (DATES: 03-20-92 TO 07-31-92)		14.0 ARAKAKI	ARR	OFF CAMP	20	0 20	



## INFOLINE...INFOLINE...INFOLINE...INFOLINE...INFO

## Tuesday, Oct. 29

\* Film- "Border Crossing: The Cinema of Johan van der Keuken" continues with a screening of "The Way South" (1981) at 7:30 p.m.

† Learn to identify and create practical opportunities for negotiation at work and in your personal life in **Negotiation without confrontation**. Through a variety of interactive exercises and role playing, you will identify your own negotiating strengths and weaknesses and develop immediately usable tools for positive negotiation. Oct. 29 and Nov. 5 from 6 to 8 p.m. at Ohia 112. Registration fee is \$42.

† **Handwriting analysis with Ruth Chong** is an opportunity to learn what can be said or read about your handwriting. Feel free to bring a sample of your handwriting for analysis, and learn something about yourself or what someone else sees in your style. From 6 to 9 p.m. at Ohia 112. Registration fee is \$20.

An introduction to KCC Health programs will be held from 2 to 3 p.m. at Kauila 209. Also, Spring '92 registration advising for Pre-Allied Health/EMS majors will be held from 3 to 4 p.m. at the same location.

† Na Mo'olelo o Hawaii presents **Ghost Legends of Oahu**. Modern tales and legends of Southeast Oahu and Honolulu are explored in this entertaining, late evening bus tour. 6 to 9 p.m. at the Diamond Head Chapel. Registration fee is \$20.

## Wednesday, Oct. 30

\* Film- Local artist and filmmaker Martin Charlot's experimental film "Apocalypse 3:16" tells the tale of a local Hawaiian man in search of a spiritual center. 7:30 p.m.

† **Drawing-Beginning II** is designed for students who would like to continue to develop their skills in drawing or for future experience in painting or other media. Seven sessions, through Dec. 11 From noon to 3 p.m. Cost is \$45, plus materials fee.

## Thursday, Oct. 31

\* Film- "The 400 Blows" is a French New Wave film, which won awards at the Cannes Film Festival and Brussels Film Festival. The film tells the story of twelve-year-old Antoine, a sweet, tough and naive Parisian tenement dweller with an unhappy home life who turns to petty mischiefs for escape. 1 and 7:30 p.m.

A Halloween costume contest will be held from 12:30 to 1:15 p.m. in the Cafeteria. Prizes will be awarded.

† Diamond Head Focus presents **Obake Tales of Japan**. Halloween is an evening for scary tales, and there are no scarier stories than those of Japan. This special program will start at 10 p.m. at the Diamond Head Chapel and is free to the public.

## Friday, Nov. 1

\* Film- "Cross My Heart" is a humorous and heartwarming film about a group of French schoolchildren who conspire to keep their friend from being sent to an orphanage. Oct. 1 and 2 at 7:30 p.m. and Oct. 3 at 4 p.m.

An information session on radiologic technology will be held from noon to 1:30 p.m. at Kauila 104.

Also, Spring '92 registration advising for Pre-Allied Health/EMS majors will be held from 1:30 to 2:30 p.m. at Kauila 109.

† Diamond Head Moviehouse, a nostalgic Friday evening at the movies, presents Agatha Christie's "And Then There Were None," from 7 to 9 p.m. at the Diamond Head Chapel. Cost is \$3 and includes live music and door prizes.

UH Manoa's Department of Theatre and Dance presents "The Blind Giant is Dancing," directed by Dennis Carroll. The play opens at 7:30 p.m. and continues on Nov. 2, 7, 8 and 9 at 7:30 p.m., with a matinee performance on Nov. 10 at 2 p.m. Sexually explicit scenes, as well as scenes of powerful violence, make this play appropriate for mature audiences. For tickets and information call the Kennedy Theatre Box Office at 956-7655.

## Saturday, Nov. 2

† Let the experts help you **Plan your successful retirement**: Social security, estate planning, attitude and role adjustment, housing choices, working options, Medicare, long term health care and more. \$50/individual (includes refreshments and lunch), \$70/couple, and special group rates for 10 or more: \$45/individual and \$65/couple.

† A Christmas message. Alton Ogo, Media Specialist at HCC, will help you create a video to send to friends and family members for Christmas. From 9 a.m. to noon at the Diamond Head Chapel. Cost is \$12.

Na Mo'olelo o Hawaii presents **Kamehameha IV and Queen Emma** with Victoria Holt Takamine and Pua Alii Ilima. Kamehameha IV and Queen Emma influenced the culture of the period with a moe European style; they also established the Episcopal church and Queen's Hospital. Queen Emma also founded St. Andrew's Priory school for girls. Kumu hulas Victoria Holt Takamine and Pua Alii Ilima will honor these two gracious monarchs. 7 p.m. at the Diamond Head Chapel. Cost is \$6.

## Monday, Nov. 4

\* Films- **The Films of Yoko Ono** is a series of short films made between 1966 and 1982. Tonight's screenings include "The Museum of Modern Art Show" and "No 4 (Bottoms)." 7:30 p.m.

† **Body therapy** is an eclectic course utilizing yoga, Tai Chi, modern dance and contemporary jazz to intergrate your entire being into a coherent and more efficient whole. Mondays through Dec. 2, from 6 to 7:30 p.m. at the Diamond Head Chapel. Registration fee is \$35.

An information session on **Occupational therapy assistants** will be held from 2:30 to 3:30 p.m. at Kauila 210.

An **International food and craft fair** will be held from 9:30 a.m. to 2:30 p.m. in the Cafeteria and outside Ohia.

## Tuesday, Nov. 5

\* Films- **The Films of Yoko Ono** continues with a triple feature including screenings of "Two Virgins," "Film No. 5 (Smile)," and "Apotheosis." 7:30 p.m.

† **Homeopathy**. Investigate this tried and true system of health care that the Queen of England uses. Learn basic principles and important tips on the use of inexpensive, safe and non-toxic over-the-counter homeopathic remedies for first aid, colds, flu, insect bites and sunburn. Tuesday and Thursday, Nov. 5 through Nov. 14, from 7 to 9 p.m. at Ilima 202A. Registration fee is \$25.

† **Creative metal and jewelry making** emphasizes using wax and metals to create lasting pieces of jewelry. No experience necessary. Six sessions, through Dec. 10, from 6 to 9 p.m. at Koa 200. Cost is \$40 plus approximately \$20 materials fee.

An exhibition of paintings by Sanit Khewhok entitled "Beneath the Skin" will run through Nov. 27 at the Koa Gallery. An opening reception will be held tonight from 6 to 8 p.m. The public is invited to attend.

**Zero Population Growth** will hold an activity meeting for people concerned about Oahu's uncontrolled population growth from 7 to 9 p.m. at the Kaimuki Public Library. For more information, call Susan at 737-9141.

\* - indicates a production or presentation of the Honolulu Academy of Arts. Films are shown in the Academy Theatre, and tickets are \$4, \$3 for members. For more information, call 538-3693 ext. 247.

† - indicates a production or presentation sponsored by the Office of Community Services. For more information, call 734-9211.

## JOB PLACEMENT

For more information on these jobs and many others, contact the Job Placement Office at Ilima 103 or call 734-9514 for an appointment.

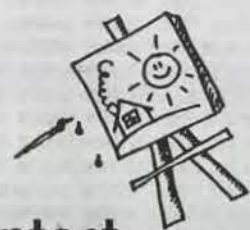
**Merchandise:** Garment distributor seeking person to go to stores to take inventory and help shipper prepare cartons for delivery. Need driver's license. Hours are flexible. Pay rate is \$5 per hour. Dillingham area. Job #1355.

**Secretary:** Telecommunications organization seeking person to do basic bookkeeping, typing, filing and computer entries. Good typing and computer skills and some office experience are required. Hours are flexible to 19 per week, Monday through Friday from 8 a.m. to 5 p.m. Pay rate is \$6.50 to \$7 per hour. Kaimuki area. Job #1362.

**Electronic mail:** Telecommunications organization is seeking E-mail enthusiast to hook up the world via electronic mail (writing to other countries). Must be familiar with E-mail. Hours are flexible to 19 per week, Monday through Friday from 8 a.m. to 5 p.m. Pay rate is \$7 per hour and up. Kaimuki area.

**Sales associate:** Retail store is seeking salesperson to sell raw silk. Must be very good with customers, have good communication skills, outgoing, high earner. Hours are very flexible. Pay rate is \$6 to \$7.50 per hour. Ala Moana area. Job #1369.

## In other news...



## Art contest

The Inter-Association Task Force and Anheuser-Busch will award \$20,000 in scholarships in conjunction with National Collegiate Alcohol Awareness Week. Thirty students will be recognized for their winning designs in the "Know When To Say When" poster competition.

A grand prize scholarship of \$5,000 will be awarded for best concept, as well as five runners-up scholarships of \$1000 each, and 20 third place scholarships of \$500 each. Get an official entry form at Ohia 101. Contest ends Dec. 15.

## Registration advising for Spring '92

Mail-in registration for Spring '92 will occur Nov. 4 through 8. The following is a calendar of registration advising group sessions available:

Oct. 29- Accounting  
5 to 6:30 p.m. Ilima 202C  
Pre-Nursing  
9 to 10:30 a.m. Ilima 105  
Data Processing  
5 to 6:30 p.m. Ilima 202C  
Pre-Allied Health  
3 to 4 p.m. Kauila 109

Oct. 30- Sales and Marketing  
2 to 3:30 p.m. Ilima 105  
Liberal Arts  
noon to 1:30 p.m. Ilima 103

Oct. 31- Accounting  
2:30 to 4 p.m. Ilima 105  
Liberal Arts  
11 a.m. to 12:30 p.m. Ilima 103

Nov. 1- Liberal Arts  
noon to 1:30 p.m. Ilima 103  
Pre-Allied Health  
1:30 to 2:30 p.m. Kauila 109

Nov. 4- Accounting  
5 to 6:30 p.m. Ilima 202C  
Data Processing  
5 to 6:30 p.m. Ilima 202C  
Liberal Arts  
9 to 10:30 a.m. Ilima 105  
Pre-Education-UH Transfer  
2:30 to 4 p.m. Ilima 105

Nov. 5- Data Processing  
2 to 3:30 p.m. Ilima 105  
Liberal Arts  
11 a.m. to 12:30 p.m. Ilima 103