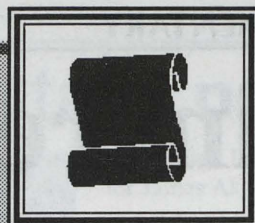




KCC skater
competes
in California
page 6



At long last...
the '97 - '98
Dean's List
page 4



Your selfless,
outstanding
student leaders
page 5

KAPI'O

<http://naio.kcc.hawaii.edu/bosp/kapio>

Kapi'olani Community College

Vol. 32, Issue 12

November 10, 1998

String of accidents increase safety concerns

Donovan Slack
Editor

On August 8, 1998, a 27-year-old Kalani grad passed away when the car he was driving ran into the metal utility pole on Diamond Head Road fronting the KCC campus. Students may have seen his family and friends who continually refresh the flowers against the light pole in remembrance.

On Saturday, Sept. 18, at 1:45 a.m. on the night of the KCC dance, a Mustang and a Toyota collided head-on right in front of the bus stop next to the pole. Fortunately, there were only minor injuries in this collision. Both drivers were able to slow down just in time.

On Sunday, Oct. 18, around 4 p.m., a red Ninja motorcycle crashed head-on into that very same pole. According to witness Roy Onomura, there were two ambulances, a fire truck, and numerous police vehicles at the scene.

"It was a sad sight seeing a mangled motorcycle right next to the

flowers against the pole," said Onomura. The motorcycle driver was taken by ambulance to Queen's Hospital. His condition is unknown.

According to Honolulu Police Department's research division, there have been five other accidents at the same location since January this year—three major and two minor, bringing this year's total to eight. In 1997, there was nine accidents at the pole, according to HPD.

Onomura recalls attending McKinley High School and there being concern about a hazardous crosswalk in front of the school. There were several close calls and then some students actually got run over, he said. Now, they have installed a traffic light at the crosswalk.

Onomura wants to avert further disasters and get the message out to everyone in the KCC community and to have them tell their friends and family that the turn by the Diamond Head entrance of KCC is extremely dangerous.

As of yet, there have been no known inquiries into erecting a traffic light at the intersection.



photograph by Michael Lee Thompson

The metal utility pole by the bus stop at KCC's entrance on Diamond Head Road. Immediately after a tragic death on August 8, family and friends began adorning the pole with flowers and messages.

Y2K: the end of the world?

With only 416 days until the year 2000 bug hits, KCC is preparing for the worst. What will it mean for you?

Chad Pata
Editor

The newspapers are filled with Y2K conjectures from nuclear meltdown to a collapse of our entire banking system. UH and its community colleges must address this problem and its ramifications quickly as 1999 descends on them.

David Lassner, director of information technology at UH Mānoa, is optimistic about our chances of survival. "I believe we will be compliant, it's a very big problem but it's not technically difficult. It is just a matter of finding all the little problems on a very definite deadline (midnight Jan. 1, 2000) and knowing that it will affect the whole system all at once," said Lassner.

In the same turn, Lassner would not guarantee that there would not be some kind of breakdown, he said there are just too many variables. Bert Kimura, director of IMTS at KCC concurs.

"I don't think the whole city will go dark at the stroke of midnight but there will be some definite problems. It will be real interesting to see what happens," said Kimura.

Assessing the problems is the number one priority right now of both Kimura and Lassner. Once they have determined which systems are not compliant, they have either to reprogram them, replace them, or con-

tact the original vendors to update them.

At KCC, there are already some systems that have been determined to be noncompliant. The older IBM 286's and 386's in Kopiko will never be compliant and must be replaced. "IBM is not offering software to update these older PC's because it would cost too much to make them compliant, so you just have to buy new systems," said Kimura. "Everyone's out to make a buck off this Y2K bug."

The problem ranges much farther than just the PCs around campus. The entire phone system at KCC is noncompliant and must be updated. The college is currently working with GTE to prevent a telephone blackout 13 months from now.

The entire registration system for all the community colleges is currently noncompliant as well. This is an enormous task that has to be addressed, you can imagine the chaos of the entire registration system crashing a week before school begins spring 2000.

Computer servers are also greatly at risk. Web servers and local email servers, such as leahi, must be reprogrammed and updated. Kimura said that they are consolidating to newer, more powerful servers in order to reach a higher level of compliance and efficiency. "There are a lot of little pieces that go through our server

that affect a lot more than you know," said Kimura. "Every time you hit return, it goes through those servers. If the systems don't comply, then everything stops."

Colleges and businesses are not the only ones that need to address this problem. If you have a PC that is more than four years old you should check it to determine if it is compliant. The easiest way to accomplish this, said Kimura, is to contact the website for your computer manufacturer and there you can download the system check for your PC.

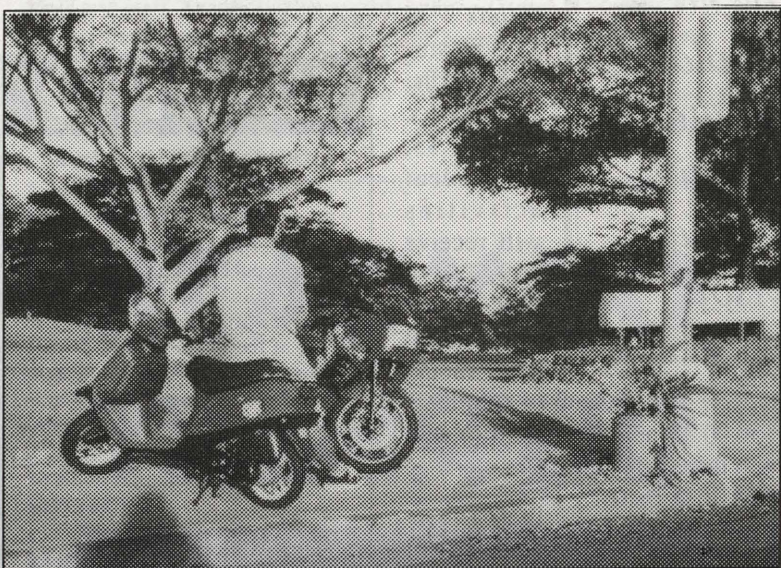
Student Activities

Monday, Nov. 16

Outdoor Concert
in the Central Mall with
**Ookla The Mok &
One World Tribe**
11:30 a.m. to 1:30 p.m.
(See in-depth article about
the gig on page 3!)

Punk-Reggae/Funky-Ska

Psst...Someone told me the
next K.C.C. Rave is Dec. 4.
Be-aware!



photograph by Roy Onomura

A friend of the motorcycle driver, who was transported to the hospital by ambulance, waits for the bike to be hauled away.

Future of film in our hands

By Jessica Carpenter
Staff Writer

The Honolulu Film Festival opened a week of films and discussions with a panel comprised of directors and film critics Friday.

Their message was that the public needs to take responsibility for the future of filmmaking by supporting independent films.

"These films bring awareness culturally and emotionally, so that we can expand," said Joan Chen, well-known actress and director.

Film critic Roger Egbert added that seeing these films at the festival, helps to spread the word, thus generating more sales and making it possible for more films of this nature to

be made.

The panel stressed the importance the role film plays in our lives. Director Marilou Diaz-Abaya reflected how a movie about an Iranian boy changed her whole view of that part of the world. She had never come close to it before and through the work of film she came to better understand and appreciate it.

"We are strangers to many other countries but by exposing ourselves to their films and stories we become familiar, and this changes our perception which in turn can change our lives," she said.

Independent films should be perhaps be renamed "Dependent films" because their future depends on the movie-going public to support them.

Activities fee cap increase proposed

To Students, Student Caucus and Other Student Governments/Organizations:

This is for those of you who were unable to attend the last UHCC meeting at the chancellor's office. Before we all left that day, I promised to outline the student activities fees issue at Kapi'olani Community College. KCC representative to the student caucus, Raymond Feliciano, has advocated the idea of a ceiling fee.

The following information has been taken from various meetings with KCC provost, dean of Student Services and the Board of Student Activities.

The student activities fee for community colleges has been \$5 since 1968. At that time the fee was approximately 10% of the cost of tuition.

Prior to 1993, KCC had the privilege a full time student activities office, along with a full time activities coordinator/advisor.

In 1993, a large inflow of students made meeting the demands of students difficult. There were not enough funds to hire another counselor. Therefore an advisor was hired to fill positions in both the student activities office and the counseling office.

This was the case until 1995 when the advisor retired. Because the position was required, it was filled by a 'temporary' casual hire. A permanent advisor should have been hired but funding for KCC had been reduced. A decision was made to fund classes, not the position.

At that time, students were paying for the part-time casual hire from the activities fee's revolving funds. The position retained its ca-

sual hire until 1997.

In 1997, the casual hire was replaced with a new halftime advisor. This person was still paid from the activities' revolving funds. The advisor/coordinator and the student activities office itself was not accessible all the time; this halftime person's duties were to advise both the Board of Student Activities and Student Congress, manage the activities office, which provides numerous services, write-up purchase orders/ requisitions, do leadership training, et al. Students needed

more access to an advisor and the office services.

Myself, A S K C C President Raymond Feliciano and Board of Student Activities Vice President Neil Watanabe met with our provost, John Morton, to ask for an advisor paid from the

college's general funds. Because the UH system was hard hit with severe budget cuts that year there was no way this could happen. On top of that, we got news that our heavily used Learning Assistance Center/ Computing Center was being considered for the chopping block. We were in a state of shock. There would be no money to replace aging computers in the computing center or to fund an advisor. Students would still demand services from our office.

In early spring of 1998, the Board of Student Activities compiled numerous complaints and suggestions and sat through hours of meetings to figure out a way to meet the needs of the students. On such a limited budget, we were faced with the formidable task of keeping the office open on a full time basis, maintaining educational activities for students, providing

leadership training and restoring the advisor position to full-time status.

Having looked over what funds we had, we were amazed to discover a budget surplus. What a surprise! The board and its advisor concluded that we needed to go full-time in order to meet the demands of the students and to have a way to create newer and better activities programs.

We decided to test the full-time idea. The board and its dean budgeted the surplus to be spent on a full time advisor and an office that would be open full-time with full services.

We conclude that meeting the demands of our students justifies increasing the activities fee. If we were to spend all the money and the situation were to remain the same then maybe raising the activities fee wouldn't be such a good idea.

At the end of Spring 1998, the student activities advisor left the program.

Until Friday, October 30, 1998, the student activities office has been run by dedicated students and a dedicated board who believe a full-time office offering its services is still the route to take.

We have hired a full-time advisor/coordinator, who will start on Monday, Nov. 2. This position is full-time and nontenured and is budgeted for two years. Once the two years are up, our surplus funds will be totally depleted.

Since the heavy restructuring of our office this past summer, on-campus activities have been sky rocketing up the success ladder.

The two dances funded and coordinated by our office have seen more than 600 people come to par-

ticipate. Known DJs have come and played music in our central mall on a number of occasions. Also, we hired students and entertainers to play music and funded big social gatherings such as the KCC Halloween party.

We have a heavy traffic of students buying bus passes and movie tickets while club members are utilizing our office services to print flyers and access stationary supplies.

All this activity is possible only because the office and its services are available all day, every day. The number of complaints by students has dropped dramatically. We went from last year's earful of complaints and suggestions to two or three this semester. Our test is proving to be extremely successful.

Unless the student activities fees are adjusted, all these services for

students and their clubs could be lost in two years.

If KCC's enrollment stands at 14,000 students and the activities fee remains \$5, the student activities will receive \$59,500 a year. A full-time coordinator should receive \$43,000 and an additional \$30,000 would be needed to support three part-time office workers. Of course, there are many other expenses. Clearly, we will not be able to continue a successful full-time program.

In addition, students needing newer computers will not have any available. Without an increase in funding, the present computers will not be replaced until the year 2000 or until they are no longer functional.

The Associated Students of KCC and the Board of Student Activities of KCC respect the feelings of those who do not want to see the cost of education increase any more. However, we are

asking you to support our proposal to increase the cap of the community college activities fee to \$30 from its present \$5. This is not a proposal to increase the fees themselves.

Because each community college has different needs, each college should have the ability to set its activities fees to suit its students' needs.

Thank you for your time and support,

Roy Onomura
Chairman,

Board of Student Activities

***Please note: this letter was edited for length.*

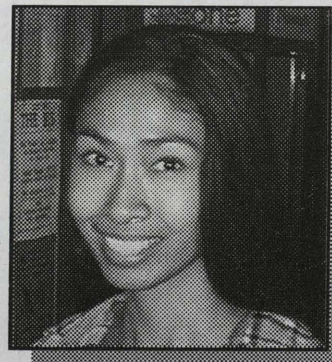
The student activities fee for community colleges has been \$5 since 1968. At that time the fee was approximately 10% of the cost of tuition.

We were in a state of shock. There would be no money to replace aging computers in the computing center or to fund an advisor.

Because each community college has different needs, each college should have the ability to set its activities fees to suit its students' needs.

SPEAK OUT

How serious do you think Y2K is?



Michelle Maristella
Liberal Arts

When the year 2000 comes around the computer system would probably be screwed up because it wasn't programmed to be suited for the next millennium.



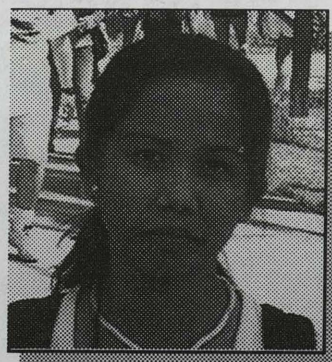
Diana Clark
Liberal Arts

It's not serious for me but it could be for the computer world. Why doesn't the government spend money to fix it instead of letting everybody try to solve it themselves.



Mike Grom
Education

I don't think it's that serious, they have a couple of years to figure it out. As long as Bill Gates doesn't come up with the software to fix it.



Mary Jane Caneso
Medical Lab Technician

I think it is real serious because if the computers shut down there will be chaos as prophesied.

KAPI'O

4303 Diamond Head Road
Honolulu, HI 96816
Phone: 734-9120
Fax: 734-9287

Kapi'o is published Tuesdays by the Board of Student Publications at Kapi'olani Community College, University of Hawai'i. It is funded by student fees and advertising. It reflects the views of the editors and writers who are responsible for its content. Circulation 3000.

Co-Editors: Donovan Slack

..... Chad Pata

Asst. Production Editor:

..... Lance Agena

Infoline Editor:

..... Danielle Herschind

Layout: Laurie Ann Makiya

Daniel Moses Michael Morita

Reporters: ... Charles Bohannon

Kelli Oda Brendan Buchwach

Jonathan Isabelo Jimmy Chow

Kelvin Manalo Jade Shiroma

Leilani Yoshikawa Dina Jang

Jessica Carpenter Todd Doi

Alika Sundberg Charlene Rico

..... Wendy Murwin

Proofreader: Shawn Ford

Advisor: Wini Au

SUBMISSION POLICY

Kapi'o encourages all students, faculty and staff to submit letters, stories and photographs for publication. However, Kapi'o reserves the right to edit any submission for length and content. Publication is not guaranteed. Entries submitted on disk with accompanying hard copy preferred.

DEADLINE: Wednesday, 3 p.m.

Copyright 1998

KAPI'O

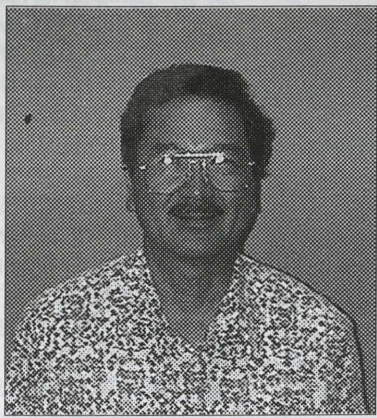
Kapi'olani Community College

Student Activities installs new advisor/coordinator

Jimmy Chow
Staff Writer

Since Monday, Nov. 2, there has been a new face in the Student Activities office. That face belongs to Mr. George Higa, the new Student Activities Advisor/coordinator.

Although he may be new to KCC, Higa is no stranger to the campus environment. For 23 years, he worked at UH Mānoa, first as a financial aid counselor (68-84), then in the Registrar's office (84-88). Lastly, he was an advisor for the College of Education (88-91). After his time at UH, Higa went on to become the principal of the Hawaii Baptist Acad-



photograph by Lance Akena

emy Intermediate school. He was there from 1991 to 1996.

After HBA, Higa left the academic field in order to briefly work

in the State Legislature under Senator James Aki. While there, he tried to get back into the university system. It was an uphill battle due to budget cuts and other complications.

Now that he has found a home at KCC, Higa's primary responsibilities will be to advise and oversee the functions of the Student Activities Office, as well as act as an advisor to the Student Congress.

When asked about any expectations he may have, Higa replied, "I think it's too early, at this time, for me to make any type of provocations or anything. I must first get myself

familiar with the campus and all of its going-ons."

He also added, however, that he is a full-time advisor, which means he'll be available to the students more of the time. He credits Student Activities members Shawn Ford, Ray Feliciano, and Tony Gedeon for the seemingly strong enthusiasm in the office and on campus. "I hope to work with them to further restore the Student Activities to full potential."

As a note to those of us who are not familiar with what the Student Activities Office is all about, Higa wanted to let us know that aside from

planning special events on campus, the BOSA (Board Of Student Activities) also sells Bus passes, Consolidated movie tickets, and runs a lost-and-found program.

If anyone has further questions, comments, or suggestions, he encourages you to contact himself or any other staff member at the Student Activities office at 734-9577 (ext. 577 on campus). Or to visit them in person, on the first floor of the Ohia building, across from the bookstore, under the cafeteria.

Excellence in teaching

Donovan Slack
Editor

The faculty—underpaid, underappreciated, over-worked leaders of our campus—finally have a chance to get their due.

The "Excellence in Teaching" award is up for grabs again and it is your duty to vote. KCC is asking that you pick your favorite and hardest working teacher, counselor, librarian or media/learning center faculty member.

The prestige of this award comes from many distinctions. The nominations must be made by three or more colleagues or by three or more students of the faculty member. Once nominated, faculty members will be thoroughly evaluated by the selection committee which includes both students and staff. Secondly, this award can be awarded to a teacher only once in their career. Last year's winner, Sandra Perez, taught at KCC for 29 years before receiving the award.

The judging criteria includes such things as accessibility to students, knowledge of subject area, fairness in grading, and interest and concern for students.

Also considered important are meeting course objectives, logical lecture presentation and organization and preparation for classes.

After choosing a winner, the selection committee will issue their recommendation to the Board of Regents. The award recipient shall receive an appropriate cash sum plus a suitably engraved Board of Regents medal.

In order to nominate someone, you must complete an application with yours and two of your classmate's signatures.

Nomination forms can be picked up in the following locations: Student Activities Office, Learning Assistance Center, Cafeteria, Computing Centers, Library, Bookstore, Counseling Office.

Nominations may be turned in to the Provost's Office until Dec. 1.

World AIDS Day Volunteers needed

Coordinators are looking for able-bodied, conscious-minded people to help be a force for change. Volunteers are needed to assist in the planning and setting up of the campus-wide awareness program on WORLD AIDS DAY 1998. Volunteers can call 734-9309 and speak with Kathy Sullivan or whomever is in the office. World AIDS Day is Dec. 1. Please come out and make a difference.

Reggae sounds coming..

Alex Sundberg
Staff Writer

Attention students! KCC and Student Activities bring you the biggest concert of the semester on Monday, Nov. 16 on the Central Mall.

Come and enjoy the roots, rock, reggae sounds of two of the island's hottest reggae, punk, and ska groups, Ooklah the Moc and One World Tribe.

The two bands will be performing back-to-back under the sun from 11:30 am - 1:30 pm. Tents and chairs will be set up by Student Activities for the event.

Ooklah the Moc is a local group with many years of experience playing here in Hawaii. They currently

perform at Anna Bananas and at many other locations. One of their members is a student right here at KCC!

Ooklah is so good, in fact, that they will be performing on November 21 at Makapuu Meadows for Reggae Jam '98, featuring Don Carlos and Eek-a-Mouse, two of the most famous reggae artists in the world...

One World Tribe is also a hot local band specializing in punk, ska, and "rastafunk". One World Tribe also performs at Anna Bananas occasionally.

Student Activities wanted something different from what we usually feature here at KCC, so these awesome bands will be performing for you on the lawn...

HIV/AIDS Questionnaire

Results will be used to assess the campus community's risk and education about HIV and AIDS. All replies will be kept anonymous and your replies may be returned in the designated boxes atop any Kapi'o dispenser. Mahalo for your kokua.

- | | | |
|--|--|---|
| #1. What is your age?
[] 17-20 [] 21-25 [] 26-35 [] 36- | #10. Have you ever had a sexual relationship without knowing your partners sexual history?
[] Y [] N | #18. Do you know where you can get tested for HIV?
[] Y [] N |
| #2. What is your gender?
[] M [] F | #11. Have you had sexual contact with an individual without knowing his/her drug history?
[] Y [] N | #19. If KCC were to give free HIV screenings on campus, would you be willing to get tested?
[] Y [] N |
| #3. Marital status?
[] Single
[] Married
[] Divorced | #12. Have you ever shared needles for drug use (possibly anabolic steroid injection)?
[] Y [] N | #20. How would STDs be a factor in your sexual behavior and how would you protect yourself from them? |
| #4. If married, have you had extra-marital affairs?
[] Y [] N | #13. Do you think that you can get HIV/AIDS?
[] Y [] N | |
| #5. What is your sexual preference?
[] M [] F [] Both | #14. Can HIV be cured through current medical technology?
[] Y [] N | |
| #6. How many sexual partners have you had in your life?
[] None [] 1-3 [] 4-7 [] 8-12 [] 13- | #15. If you had HIV/AIDS, would you still consider having sex with others?
[] Y [] N | #21. Do you think Alcohol would effect your judgement in your practice of safe sex (while under the influence) and the practice of others? Why? |
| #7. Have you ever had sexual intercourse (vaginal, anal) without the protection of a condom and spermicide?
[] Y [] N | #16. If you knew someone who had either contracted HIV, would you be afraid to physically touch them, share a bathroom, or sit by them?
[] Y [] N | |
| #8. Have you had oral sex with a male without using the protection of a condom or with a female without using a latex barrier?
[] Y [] N | #17. I have been tested for:
[] STD (sexually transmitted disease)
[] HIV
[] Both
[] Neither | |
| #9. Have you had sexual contact with and individual who is known to have had sexual contact with many other partners (male and female)?
[] Y [] N | | |

READY TO TRANSFER?

Time is running out...

Most applications are due in the next few months. If you intend to enroll in another college or university, call 540-0434 for expert research on admission, transfer credit and planning.

Better Essays & Applications

We help students improve their essays, impress admissions officers and finish applications on time.

Better Financial Options

We explain the process, estimate your financial need and research valid scholarship opportunities.

Best Shot at College Success

collegeconnections
Educational Consultants

Call 540-0434 for a free consultation. 1188 Bishop Street, Suite 1507, Honolulu, 96813. Info@college-connections.com

ABALOS CHERRY ANN
ADAMS KIM
AGENA MICHELE
AGENA SANDIE
ALIVIO DIANA
ALTMARE JENNIFER
AMERINE RONALD
AMURO SCOTT
ANDERS VIRGIL Jr
APFFEL NATHAN
APUNA BENEDICT
ARAI KIYOKA
ARAKAKI CAROLE
ARAKAKI ERIC
ARAKAKI KATHY
ARAKAKI MARY
ARAKAKI MERLE
ARAKAKI SEAN
ARAKI TAKAKO
ARICO DIANE
ASAM ROBERT
ASATO LAUREN
AU SHUI HONG
ALI-YOUNG YUK YIN
AWAYA DENNIS
AZEVEDO ELIANE
BALILA JOAN MARIE
BALMILERO DAWN
BARTHEL KENNETH Jr
BASCONCILLO MAILE
BASKINS MYRA LEAH
BATTAGLIA COURTNEY
BATY HUI-LING
BENSON BILL
BENSON TANYA
BERRIOS ARIEL
BERTRAND JOHN
BEWLEY BRANDY
BILBERG CATHRINE
BLACKARD SHEILA
BOHANNAN CHARLES
BOND ROBIN
BONGO CAROWEAN
BONIN DAWN
BOYCE TOBIAS
BRONNIMANN PASCAL
BROSTEK PAMELA
BROWNING SAMUEL
BURROUGHS MARIA
BUSH KATIA
BUTAY NANCY
BUTLER MICHELLE
CABREROS JOANN
CADAMIA JULIANNE
CALDERON AGNES
CANOSA FLORENCE
CANTA JOSE Jr
CAOAGAS GLADYS
CARMICHAEL GRACE
CASABAR SHIRLEY
CASTRO NELIA
CATALFANO TIFFANY
CHAI KIMBERLY
CHAMBERS CHRISTY C
CHAN ERIC
CHAN KWOK YING
CHANG KAREN
CHEN XIAO FEN
CHEUNG NOEL
CHIANG WARREN
CHIKUMA JULIE
CHO JAMES
CHO YOUNG HYUN
CHOCK KEVIN
CHOI CHONG-SUN
CHOI SARAH
CHONG KEITH
CHONG NOAH
CHOY JARIDAN
CHRISTENSEN SHAWN
CHUA RICHARD
CHUNG RICK
CHUNTRON APRIL
CLARK DIANA
COCKERHAM RORERTA
COLLER JAMES
COLLINS EMILIA
COLLINS EVA
COMER BRADLEY
COMER CINDY
COMMENDADOR AMY
CONCANNON PATRICK
CONDOS CANDY
CONDY HILERY
CORONADO DOROTEA

CORPUZ EILEEN
CORPUZ JANE
CORPUZ JEANNIE
COSTEA SHU
COURTNEY MAY
COWEN MARIA
CRISOLOGO MICHELLE
CROSSLEY JANINE
CUNNINGHAM EMILY
DAI DO ANNA
DAMO RAYDELL
DANFORD JEAN
DATA GERYCKDUANE
DAVIS DAWN
DAYAG WILLIAM
DELEON GUERRERO S
DEN BREEJEN JOHANNA
DETWILER CANDACE
DISSINGER DINA
DO CUONG
DOCTOLERO MAYLANIE
DOI RANDALL
DOSS KATHLEEN
DOTY CHRISTINA
DOUGHTY RADONNA
DOYLE STACY
DREW MADELEINE
DUARTE GLORIA
DUVERNAY ARLETTE
EDMONDSON DANIEL
ELESARKE SUZANNE
ELENBACH CHELSEA
ENOS NANCY
ESCRITOR TANYA
ETCHEBERRY ELKE
ETO NOEL
FAGAN ANDREA
FARAJ NANCY
FARRELL IAN
FELICIANO RAYMOND
FELTON PAULA
FENG QIHONG
FERMIN ALDY
FERNANDEZ KERI
FIJALKOWSKI KELLY
FOLEY SINA
FONG ANDREA
FORBES SUZAN
FORD SHAWN
FOWLER HEATHER
FOX KAYA MM
FOYTICH CHRISTINA C
FREEBURG JANICE E
FREITAS MICHELLE L
FRITZ JAY JAY J
FU EMILY
FUJI DEREK K
FUJII JASON H
FUJIMOTO LAURA L
FUJIOKA ALEXANDRA D
FUJISHIGE GUY T
FUJITA HAROLD H
FUKUNAGA CYNTHIA H
FURUKAWA JULIE A
FUYUMURO TIFFANY L
GALAMGAM JEFFREY R
GALLOWAY STACEY D
GAMIAO EARL P
GANOTISI EILEEN D
GARCIA RONALD K
GARDNER JOE-ANN M
GARGUILO BRIT H
GAYLORD SCOTT AH
GEDEON ANTHONY M
GEORGEDES CHRISTINE
GERTSCH BRUCE L
GIANNELLI MARY JEAN
GILHOOLY SUSAN LC
GLASSMAN NANCY
GOODACRE CHRISTINE
GOODWIN WAYNE P
GOSE RONALD P
GREENE SUMMER H
GUECO DOUGLAS M
GUILLERMO ROMULA
HAISEN AARON M
HALL ALLISON M
HAMADA KAREN M
HAN SUNG HEE
HANAKA KIMBERLY S
HAO MELISSA K
HARADA CARY R
HARAGUCHI CHERISE M
HARMAN MICHELE R
HARRIS DONALD E

HARRIS LINDA K
HASHIMOTO NINA M
HAYASHI GUY Y
HAYWORTH MALOUA L
HEATH KELLY L
HEIRAKUJI CHRISTINE H
HENDRIX SHEILA C
HETRICK SHERRIE N
HEWITT MICHAEL A
HIRABAYASHI AKI
HIRASHIKI KAREN N
HIRAYAMA PETER R
HO JULIE WL
HOEVELKAMP TIMOTHY
HOLOKAI JARRET MK
HOOLEY APRIL J
HOROVITZ INGRID E
HOSHINO BRENT T
HOWARD CATHERINE
HOWE DANIELLE E
HSIEH DANA R
HU DOUGLAS DW
HU TAOTAO
HUANG HUAN-CHIN
HUANG JAMES YG
HUDSON JANE M
HUSSAIN RIMA
IDA KANAE
IJIMA YUMIKO
INO KARIN
IKEDA RIKI
IKEDA SACHIYO
IMAOKA RANDALL T
INIS ELOY TERRY G
INOUE LANCE K
IRIZARRY LILIA D
ISEKI KAORI
ISHII MARK T
IWAMOTO MIKIKO
IWATA ALAN A
IWATANI NEIL A
JAWAWICKRAMA M S
JEON DIANA N
JIMENEZ RYAN J
JOHNSON TY A
JONG CHRISTOPHER KS
KABIR HOSNEARA
KADOOKA RYAN K
KAGAWA CHAD K
KAHALEWAI MOSES K
KAJIHIRO CAROLE N
KAM BRANDON H
KAMEDA LORRAINE M
KANAKO JOYCE A
KANESHIRO NATHAN
KANETANI KEITH B
KANG SUMMER D
KANOHO KEALONAPUA
KAHOI-PROTHERO B
KARALOVICH KIMBERLY
KARPOWICZ ROBERT
KATO MIKA
KAUFMANN ARTHUR J
KAUKA ROBIN R
KAWANO CHRIS T
KELLY DONNA
KELLY KEN
KENNEY EDWARD A
KEOLANUI VINCENT
KIEHM RUTHERFORD T
KIHIRA MAKIKO
KIKUCHI HYACINTH M
KIM JUNG MEE
KIM KATHY C
KIM MYO JUN
KIM ROBIN MARCUS
KIM TURI
KIMURA SHARON L
KINIMAKA TERI-ANN C
KINOSHITA JEFF F
KISELYK MARK D
KITAHARA LISA F
KNOWLES ANA AA
KO HYUN-KYUNG
KOBAYASHI AYA

KOBAYASHI SHARON R
KODAMA IKUKO
KOGURE CHRISTINE M
KOH EUN JUNG
KOIDE JULIE A
KOMINAMI AKEMI
KOMYATE RACHEL M
KREIFELS BRIGITTE R
KUBA KAWIKA Y
KUBOTA BARBIE J
KUROMOTO PAUL R
KUSUDA RICKY Y
LA PAGE LORETO O
LAGARDE MICHELLE A
LAKEY TERRY J
LAKOMSKI JEFFREY B
LALIBERTE ROLAND G
LAM HIN CHEUK
LAM SI CHIT J
LAROCHE RONALD L
LATHAM HEATHER L
LAU JANELLE MF
LAWRYER ANNE M
LAZZARO DARIN R
LE MAI-PHUONG T
LE THANH HUONG T
LEE BONNI-BETH CL
LEE HUNG
LEE JUN HYUK
LEE JUSTIN M
LEE KATHRYN LH
LEE LISA H
LEE NANIKI E
LEE PEI FANG
LEE REGINALD CB
LEE SUMI
LEE SUZANNE M
LEI KA IOK
LEI SU TAK
LEIGGI ANTHONY
LEN MINDY T
LEO JOEL M
LEONG HONG YI
LEONG JON R
LI YING
LONGDEN DAVID S
LOPES BRADLEY K
LOUIE SHERWIN SC
LU XUE
LUM MARISA L
LUNDELL THOMAS J
LURIA ESTELA D
LUSTIG ROSALEE A
LYNCH DONNA M
MA CANDY L
MACDONALD LIDIA Y
MACKIN JOANNA L
MAII ROBYNNE L
MALINA ERIC I
MALLOY LEWIS B
MANGLONA GLENN M
MARC DIANA AH
MARKIN JACQUELINE M
MARTIN LANE G
MASAGATANI DARRYL Y
MASSEY PETER G
MASUKO GLENN H
MATSUMOTO CHRIS S
MATTHEWS TAMMY L
MATTOS MARLENE
MAYNER LYE-CHOO C
MAZGANI-FOCHT F
MCDERMOTT SKIPPI M
MCELROY EMMA M
MCGONIGLE REBECCA
MCGUIRE AKIRA
MCMOORE TEPAIRU E
MEINEL ANNE L
MELLINGER MATTHEW
MEW CANDACE SLW
MEYER DAVID C
MEYER LAURA L
MIELE LAURA L
MIN ROBIN C
MISTELI JUDITH E

MIYAMOTO SCOTT H
MIYASHIRO AIMEE C
MIYASHIRO ERIN K
MIYATAKE SHERYL L
MIZUOCHI KUMIKO
MOK BECKY CL
MONROE JUDITH A
MORALES PHILOMENA
MORALES STEPHANIE JE
M RI MAKIKO
MORINAKA THOMAS I
MORITA RILEY
MUKAI KAZUTOSHI
MULHERN SEAN J
MUNESUE TODD T
MURANAKA JOY F
MURAO SHOKO
NACIONALES DEANNE T
NAKAJIMA ADELE M
NAKAMURA AKEMI
NAKAMURA COLLEEN S
NAKAYAMA THERESA AP
NAPOLETANO GENOVEVA
NGO-SOBON HALINA
NGUYEN BAO G
NGUYEN GINA D
NGUYEN MAI-HAN T
NGUYEN QUYEN H
NGUYEN TIMOTHY
NGUYEN TUONG-HAN
NHOMI AILEEN E
NIEBUHR SCOTT M
NISHIDA BRIAN J
NISHIDA ROBERT S
NISHIMOTO SHANE S
NISHIMURA KEVIN A
NISHIZAWA LORI M
NOBLE MONIQUE R
NOMURA RYAN T
NOMURA STUART T
NORDSTROM GEORGANNE
NOZAWA KATSUHISA
OBERLANDER COREEN
ODA GAYLE E
OKAMOTO TAKAHIRO
OKIHARA CAROLINE K
OKINO CLIVE H
OKURA GLEN T
OLEARY DENNIS J
ONAGA JULIE T
ONODA MAYUMI
ORDONIO JASMINE R
OSHIRO DEBBIE E
OSHIRO LEIGH S
OSHIRO RANDALL H
OSHIRO RAYMOND K
OSORIO EMIL M III
OSUGI KANA
OYA KELSEY AI
PA SAMANTHA K
PAGALA ZELDA M
PAI BENTLEY J
PANG MEI
PANUI LANCE SK
PARK RAY HK
PARSONS DANA E
PATA CHAD R
PAULIC NANCY A
PAULO JASON R
PELTIER SHANON G
PHILLIPS GARY P JR
PINACATE REYNALDO
PINE KIM L
PINIOL BRENDA H
PLOT GILLES M
POAHA SHELTON J
POPIAK PEARL A
PORTER ALEXANDRA C
PRESLEY JONES PAMELA
PREZA DIANE A
PUERTO KAYO S
QUILLOY BARRY RK
RACKLE CHERYL L
RAFAEL FLORENCE W
RAMOS KASSANDRE C

RAMOS MICHELE K
RAMOS SHIRLEY I
RATERMANN MERLIE A
RAZA CHOUDHRY U
RIBELLIA TRACY H
RICKETTS DAMON J
RIES MARTINA
RIPPEY ANNA M
RIVERA LEAH S
ROBINSON CHARITY M
ROBINSON SHEREE D
RODRIGUES CLARENCE
ROGERS PAMELA N
ROLEFSON RICHARD K
RONALD RONALD R
RUSSELL CHERYL K
RYAN ELIZABETH M
SAEWONG MARK A
SAGA KAORI
SAILOLA BRIAN A
SAITO NANCY S
SAKAI JACIE R
SAKATA AKIHITO
SALES JULIET B
SANCHEZ-VERA LUIS A
SANDERS MIE
SANTEE IAN TT
SANTIAGO VALERIE J
SATO DARREN Y
SAYADA NICK J
SCHLEI F JONATHAN W
SCHOFFER KONRAD I
SCHWARTZ KRISTEN M
SEABOLT HEIDI B
SENTELL ADRIENNE L
SEO SEUNG B
SERIL LORENA MS
SEWDAT BEBI ZK
SEXTON PATRICIA A
SEYMOUR
KAMANAOKAKUHIHE
SHANKLES DENISE KY
SHEN MARGARET M
SHEUNG WILLIAM
SHIINOKI RYAN H
SHIKAKURA YASUO
SHIKI KAORU
SHIMABUKURO LINDA
SHIMABUKURO
MIYUKI
SHING MAN YEE
SHIOHARA TOMOMI
SILVA HEATHER A
SITLOH JESSICA D
SLACK DONOVAN E
SLUSSER DARICE
SMITH DAVID J
SMITH KATHRYN T
SNYDER STACEY N
SO CHUI-PIK I
SOBOLEWSKI BOZENA
SONG MALIA
SONOMURA MARK HT
STARR JOAN L
STETTENBENZ SCOTT J
STEVENS NINA MD
STEVE ERICA C
STOKES LORI
STOLPE AYAKO W
SUEN JENNIE JW
SUENAKA MARIE J
SUGAI GARRET H
SUGASAWARA STUART
SUSTER CHARMIAN C
SUTTON SHANE H
SWITZER VANESSA U
TABATA ALISON H
TADAO BRYANT NA
TAJIMA TOMOMI
TAKAHAMA LEILA Y
TAKAHASHI YOKO
TAKASHIMA LENA F
TAKATA JOSEPH A
TANABE RIKI T
TANAKA MERCURY A
TANG JENNIFER KT
TANIGAWA MICHELLE
TANJI MALIA K
TANNER JOHN W
TASAKA ALISON F
TASSILL JORDAN H
TATEYAMA DENISE K
TATEYAMA NATSUKI
TEHO JEFFREY A
TEIXEIRA LEANNE E

TEREGEYO JASON
TODD AGUSTINA P
TOKI ANDREA K
TOLKSDORF SUSANNE
TOMA JOHN S
TOMAS CATHERINE T
TONEGAWA AKIHIRO
TOTOKI JANICE S
TOYOMURA CHAD SC
TRAN DIEMHUYEN T
TRAN JAMIE DD
TRAN TIN T
TRAN Y-NHI T
TRINH NGOCHOT T
TSUMOTO REED K
TUDELA JESSE M
TULIAO MARCEL G
TYAU DEDANIA M
UEDA KEIKO
UEHARA NATH AN H
UEKI JASON B
UEMURA TRACE M
UHRLE DARRYL E
UJIMORI JENNIFER M
UMEMURA MAKIKO
UYEHARA PARADIS K
UYENISHI AMANDA KK
VALDEZ ANNALIZA V
VALDEZ MALIA K
VALENCIA STANLEY A
VAN ORDEN GEORGE H
VARILA SHIELA MARIE A
VELA HERMELINDA
VELLOCIDO BRAND K
VILLAFLORES ISIDRO G
VISAYA SHARON-MARY
VON KELTZ ALEXANDER
VORIS GEORGIA C
WAKIDA TODD T
WALLIS CHRISTINE
WALTERS KA-YEE
WANG XIA LING
WATANABE NEIL Y
WAUKE GRACE K
WEBB LISA G
WERNER ROY P
WHITE BARBIE J
WIGERI VAN EDEMA S
WILLEBY TAREK T
WILLIAMS APRIL A
WILLIAMS CHAD JK
WILLIAMS MARLON P
WILLIAMSON CALVERT
WINSLOW AMY D
WITT MARTA
WONG CHIU WAH
WONG GORDON CJ
WONG JAMES MK
WONG NAI SZE
WONG SIU LING Q
WOODWARD SHALEI Z
WOOTTON JENNIFER E
WORRELL BOBBIE R
WRAITH TRACII RO
WRIGHT ZENA P
WUN MICHAEL R
WYCOFF JONATHAN H
XIAO CINDY YC
YABUKI YUKO
YAMACHIKA JODI H
YAMAGUCHI TRYON
YAMAHA TEPPEI
YAMAMOTO DONNA M
YAMAMOTO MARYLIN
YAMATO SHEREE M
YAMAUCHI YUKA
YANE CHIKAKO
YAP SHOOK MEE
YARA CHRISTY H
YIM SANG DO
YOGI VERNON K
YOKOYAMA REBECCA A
YOSHIZAWA SHAUN A
YOUNG CHRISTINE SY
YOUNG GEORGIANA
YU GENE T
YU XINHONG
YUCKER CHONG
ZAUSA HONESTO P JR
ZERBA TRAVIS S
ZHENG DANA WANNA
ZHENG JANICE XC
ZIEGLER AMY E
ZIMBRA ANN M
ZOLLO ELI
ZUCKERNICK EMILY L



1997-98 Dean's List

Kapi'olani Community College

Kapi'o salutes outstanding student leaders

Feliciano, quiet leader

Kelli Oda
Staff Writer

He has a muscular build, a quiet nature, and a big concern about what is happening on campus. His words are soft, but very passionate about his primary goal of creating a fair and friendly atmosphere for KCC students, faculty, and staff.

Raymond Feliciano has been Student Congress President for two years, and was recently named the UH Student Caucus President. He is also a member of Phi Theta Kappa Honor Society and Kapi'olani Marketing Association. His ultimate goal is to earn his degree in Public Relations.

One of his main concerns about KCC is student apathy. He wants to improve activities for students and work with the Student Congress to create student unity including a sense of belonging for students, to take away the confusion they might have about school, and to explore greater bonds between students and staff.

Under Feliciano's leadership, Student Congress has pursued student rights in many ways. The Student Congress worked side by side with the administration and faculty to change the procedure of withdrawing from classes without getting a teacher's approval.

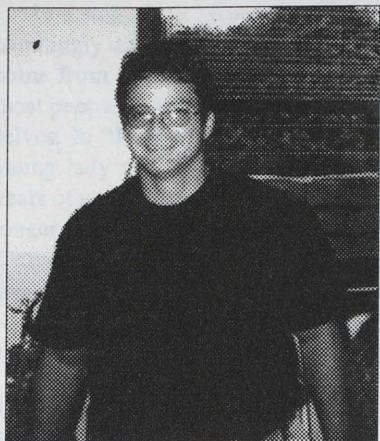
When the math department proposed that a student who failed the same math class more than twice would have to go to the back of the line to sign up to repeat the math class during late registration, Student Congress and Feliciano saw this as a problem. They were concerned about the students who were trying their best but just could not grasp the concepts in class. So in response, Student Congress suggested that students who were actually trying could get a waiver from their math instructors to sign up at their regular registration time. This matter is still on hold for the moment.

Since Feliciano has been part of Student Congress, it has worked to have vending machines to be installed in the 'Olapa and Kopiko buildings, and replaced the old umbrellas that were over the tables by 'Iliahi and provided funds to keep the library open longer hours.

The Congress also funded the Smoking Shelter because when the library decided that they would enforce the state law of prohibiting smoking in that area, Student Congress felt that smokers needed an area too.

Feliciano has recently been named UH Student Caucus President. The caucus is made up of representatives from all UH campuses. He is anxious to represent all 50,000 students in the UH system state wide, he said. He hopes to bring different perspectives on handling situations, inspire a new direction and energy, and most importantly, get desired results for all involved.

KCC is currently in great danger



Raymond Feliciano

of losing its LAC and Computing Centers. There are budget cuts that are starting to affect all of the UH campuses. Feliciano has been trying to make everyone aware of the consequences of these cuts.

KCC's LAC and Computing Centers will be affected because they are outside of the infrastructure of the community college itself, not directly linked to any department within the college. The money that was spent on the LAC and Computing Centers will go to the improvement of equipment for departments. The LAC and Computing Centers will eventually be phased out unless something is done.

Provost John Morton suggested that these facilities could be saved if the students could come together and take care of them. Student Congress believes that raising student fees is the most feasible way to save the facilities.

Since 1968, the student activity fee has been \$5 per semester. In 1968, \$5 could do a lot, but times have changed. In 1998, \$5 is just not enough to get the same results.

Feliciano plans to suggest to Student Caucus that they raise student fees, but with a \$30 ceiling. This does not mean that student fees will go up to \$30; it means that each UH-affiliated school will be able to raise the student fees up to the maximum of \$30, dependent on each school's needs.

KCC's student fees could be raised anywhere between \$5 to \$10. This money will be used to upgrade and maintain the LAC and Computing Centers. The money will also provide KCC with a full-time Student Activities advisor.

Related to the problem of up-to-date computer access, Feliciano and Roy Onomura are exploring the idea of also having an Internet Cafe on the KCC campus, and possibly having an outside vendor run the operations. The vendor would provide computers, software, and a printing service for students and possibly the public at a reasonable price.

Feliciano has also proposed to Student Caucus the idea of student discount cards which would benefit all community college students. Students would purchase a discount card for a reasonable price, enabling them to get discounts for UH game tickets. Selling these cards to the public for a higher price than the students is also under consideration. Feliciano wants to see more people participating and going to the games. He strongly believes that these discount cards could get people into the stands and create a team spirit again, because morale has just disappeared.

(continued on page 6)

Ford, the man behind the raves

Brendan Buchwach
Staff Writer

Faster than a speeding e-mail...
Smarter than your average bear...
Able to leap Olapa in a single bound...

It's a mynah. It's a Liberal Arts major.

No! It's "SuperShawn"!

Yes! That blur you've seen zipping around campus is none other than Super-student, Shawn Ford. A '98 graduate of KCC with an AA in Liberal Arts and emphasis in Asian Studies, Shawn is an invaluable asset to the Office of Student Activities at KCC.

Shawn was born in Memphis, Tennessee and migrated to Hawaii via San Francisco in 1991. Shawn's travels have taken him from exotic places like Fiji and Kaua'i to exotic places like Germany and Amsterdam. Shawn really enjoys Europe and says he would love to spend more time there in the future.

"Nirvana for me would be somewhere in Europe— maybe Amsterdam. I've been there twice and really liked it. There's so much to do. Fun! Fun! Fun! All I remember about Amsterdam was everything was in capital letters," he said.

Although Shawn's travels have taken him around the world, he prefers to stay at home brewing a "batch" and listening to "techno." He also enjoys watching old Clint Eastwood movies, his favorite being "Kelly's Heroes."

He currently resides in Kaimuki with his wife Akiko, whom he met while "exercising" at the Wave one and a half years ago. Akiko is not only Shawn's favorite person, she is also his favorite chef.

"Akiko's Okonomiyaki is the Bomb. Her takoyaki is killer, too!" he said. Okonomiyaki is a traditional Japanese dish. It's a "pizza" made

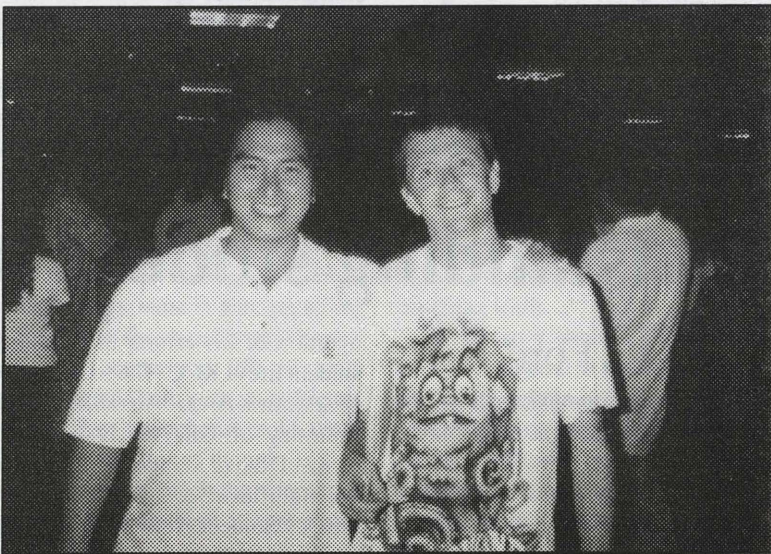
from a pancake-like batter containing thinly sliced beef and cabbage that's fried crispy in a special pan then topped with shredded nori and a secret sauce.

"You can't get this anywhere. You have to know someone who makes it—I know Akiko."

Takoyaki is a similar dish using tako (squid) as the "meat" of the "turnover".

Shawn is continuing his education here at KCC until next summer when he will transfer to UH Manoa in pursuit of a degree in TESL, Teaching English as a Second Language.

(Continued on page 6)



photographs by Lance Akena

Roy Onomura and Shawn Ford at the last dance/rave.

Onomura an inspiration to all

Charles Bohannon
Staff Writer

Roy Onomura sits alone at a computer, diligently typing. He is hunched over and leaning into the screen with great care, carefully reviewing his writing.

Scattered about the desk is a calculator and a cup of coffee, half-full and no longer steaming. The fluorescent lit room leaves him humbly exposed under its bright white light as he dedicates yet another day to the present and future of KCC.

A co-chairman of KCC's Board of Student Activities, Onomura is one of the brainchilds and virtual pioneers of the increasing success of campus-wide activities and student involvement. From organized island-wide hikes to a student lounge to his latest project, "Study With Your Buddy," Onomura's successes have achieved momentum. He attributes his success to sheer time commitment of "countless hours" and his bonafide interest in extra-curricular activities.

"You cannot learn in class what extra curricular activities offer. I believe that getting involved in something really completes any educational goal that one might be pursuing," he said.

With a thoughtful expression, Onomura said he now wants to expand the student activities program, not just perpetuate it. Presently, he has teamed up with Shawn Ford and Ray Feliciano, both of whom are just as dedicated as he for their hard work.

A growing concern among the

three is funding. All of the surplus money designated for student activities will be depleted within two years. Onomura and his team have proposed that a system-wide ceiling on the activities fee be raised from \$5 to \$30, which gives each community college the option to raise their fee to meet their needs.

This proposal, if passed, would ensure the future of KCC's activities along with the well-roundedness of students. Onomura's hopeful expression reflects one of his greatest concerns: continued student involvement. He encourages students at KCC to join clubs, start clubs, attend campus functions and basically be a part of the extended community.

"Volunteer at something that you like, and do it wholeheartedly; even helping to put up decorations is really significant," he said. He admits that at one time he was quite inactive outside of the classroom, but that changed in 1996 when he attended a meeting of the International Students Club at the suggestion of counselor Regina Ewing.

"By the end of the day, I was made president of the club. I was so excited that I went home and told my roommates and my mother. That's how it all started," he said.

Onomura also stresses that in many cases a potential employer chooses the candidate with extra-curricular involvement over an equally qualified one without involvement. "I hated leaving that section blank," he says, "I also realized that this school has a lot of people that study really hard. I thought, 'We might all apply

for the same job or the same school. What can I contribute along with my grades?' That's when I thought, 'I gotta jam in school!'"

A smile spread across his determined face. This semester has been the most successful one by far. Student involvement has indeed skyrocketed. There have been two dances with attendance of 600-plus people. Well-known DJs have played in the central mall on a number of occasions. Students and entertainers have been hired to play music, and social gatherings such as the KCC Halloween party have been funded. A student lounge is on the way where students can break from their hectic schedules in a comfortable, social environment without having to leave campus, in large part to Onomura's leadership in gathering furniture and equipment for the room.

Roy Onomura was born in Guam, moved to Hawai'i at six months old, and graduated from McKinley High School. A beautiful campus, helpful people, and many enriching opportunities brought him to KCC in 1996. He is currently taking three class and devotes the rest of his time to volunteer work on campus and at Queen's Hospital emergency room. His future plans include the pre-med program at UH Manoa.

Onomura bid a warm farewell as he returned to his post at the office chair in front of the computer. He paused and closed his eyes, deep in thought. A new idea seemed to have materialized and off he went again, endeavouring to strengthen unity and participation at KCC.

photographs by Rob Morishige

A lesson in determination

Wendy Murwin
Staff Writer

She stands in the shadows, anxiously awaiting her turn. As the announcer calls her name she takes a deep breath and glides out onto the ice. With her long ebony hair pulled back into a graceful bun, she is poised and elegant. Her slender athletic frame betrays not a tremor of her pre-performance jitters. The music begins, and she takes flight. She is Kalani Malama, and she is beauty in motion.

Nineteen year old Kalani Malama, a freshman here at KCC, is a figure skater. She will be competing this week in the San Jose California Central Pacific Regionals, at the senior level. The highest level in figure skating.

Kalani is the only individual in Hawaii to ever pass the senior free skate test. How she passed the test is a lesson in perseverance and determination. On the day of the test, the

ice had begun to melt due to a malfunction in the compressors, which keep the ice frozen. In spite of this formidable handicap, and unwilling to wait an entire year before she could try again, Kalani made the decision to proceed with the test.

She says "I was so nervous and scared, but I knew I was ready. It was just a matter of making my body do what it was supposed to." She skated a nearly perfect program, and passed the test in spite of the melting ice.

Kalani began skating with her brother, sister and cousins when she was five years old. What started out as fun soon turned into more. She started taking group lessons, and then private lessons with her older sister. Kalani's sister soon quit, but Kalani continued, and her coach told her parents they should consider entering her in competitions.

By the age of eight, Kalani was competing at the regionals which are held every year. By the time she was in seventh grade, a decision had to

be made. She wanted to attend

Kamehameha, but her parents could not afford to pay for both skating and private school. She made the decision to continue skating and do home schooling. She began traveling to the mainland to train in Southern California at Ice Castle international Training Center. After travelling back and forth for several months,

she decided to stay in Hawai'i with her coach, Tom Bartlett, who has been with her since she was seven years old.

Today, Kalani maintains a hectic schedule. After rising at five a.m. to practice her skating, she then attends school. After school she works out. She also somehow finds the time to coach.

Although she acknowledges the pressure she is under, and admits it is sometimes difficult, she handles it with a maturity rare in someone so young. She says, "I am going to compete for me. I love to skate, and I love the excitement of getting out there in front of all those people. I don't know how far I will get. I am going to take it one step at a time."



Outstanding student leaders (continued from page 5)

Shawn Ford

(Continued from page 5)

"I'm not sure right now. Maybe I'll go for an M.A. in TESL with a B.A. in Asian Studies or vice-versa," he said. Shawn's schooling has provided him with many opportunities to pursue his favorite activity, tutoring others and organizing events. He recently received two awards in recognition of his efforts in enriching student life at KCC. The first was the Nakamura Award established in memory of Charles Nakamura, former Dean of Student Activities, for his significant contributions in the area of Student Activities. The second was the President's Award sponsored by Student Congress in recognition of his outstanding contributions to the students of KCC as a

member of Student Congress. The award was presented to Shawn by Student Congress President, Ray Feliciano.

Shawn has been involved with numerous clubs and organizations on campus including Phi Theta Kappa, the Art Club, Board of Student Publications(BOSP), the Office of Student Activities(OSA), and was an elected member of Student Congress

last year. Last spring, he established two new clubs—the Homebrew Club for students interested in do-it-yourself homebrewing and the Video Production Club for students interested in video production techniques.

Shawn puts in 30+ hours a week with the daily operations of OSA. "I started volunteering my help for the fun of it and now, three semesters later, I'm employed on a part-time basis getting paid for what I love to do," Shawn said. His favorite activity is organizing events, specifically Raves. A Rave is a high-tech, high-energy dance marathon with flashing lights and pounding house music. The vibe is positive, the adrenaline is pumping, everyone is sweating, gyrating and having a good time. Shawn enjoys organizing the event even though it takes a lot of hard work.

"First you have to come up with a theme, pick a date, then you have to print a flyer, then you have to coordinate with DJs, equipment personnel, maintenance, and all the proper authorities," Shawn said. "Then you cross your fingers and hope everything goes as planned."

"It takes a lot of work, but it's worth it in the end," he said. Shawn's interest in Raves comes from a combination of his leisurely hobbies of listening to "techno" and hard-core dancing. His vast network of connections in the local entertainment industry enables him to promote events that are timely and hip. This semester, OSA has sponsored two very successful Dance-Party-Raves which attracted students from KCC and other schools. Look for the next Rave in December. Admission is usually \$3 and the fun lasts well into the night.

Shawn was also a driving force behind the Art Acquisition Program started by student congress last semester. The program was initiated to fulfill a promise made by KCC to the Kaimuki community that KCC would have a Fine Arts department. Under an agreement, proposed by Shawn, Student Congress through the ASAAP (Associated Students Art

Acquisition Program) would purchase two pieces of student artwork in the fall, one piece of student work in the spring, and one piece of professional work also in the spring, to remain as permanent acquisitions of the Koa gallery, never to be sold.

Shawn says he will stay on at OSA until it's time to transfer to UH next year. His goal for the future of OSA is simple, he said.

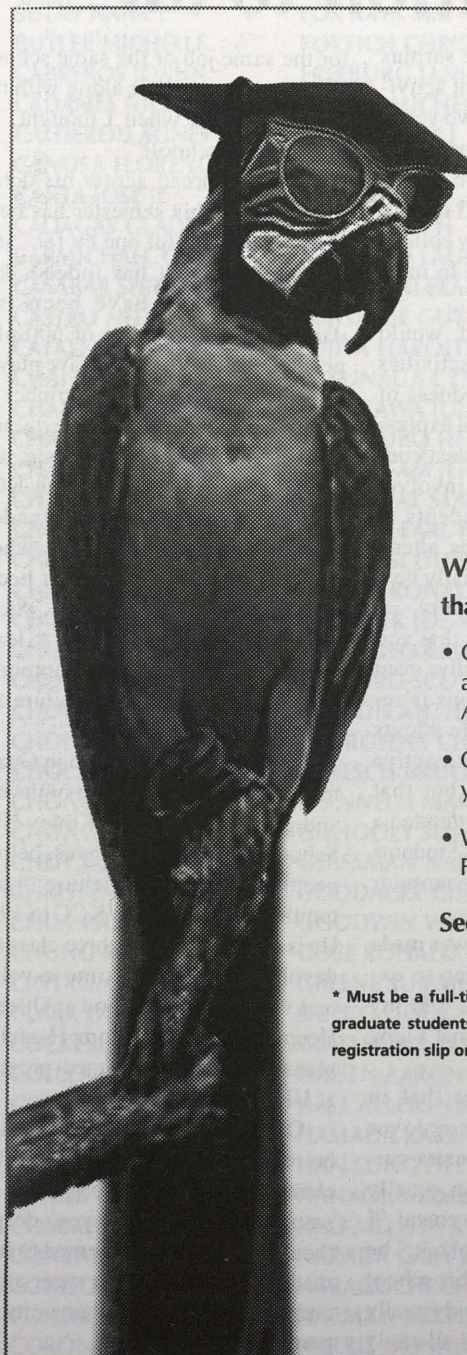
"I want OSA to live up to it's name. The Office of Student Activities is here to provide activities for students and faculty. That means having a structured, organized office with efficient leadership and student support."

Shawn says when he got involved, OSA had nothing going on. No activities! No publicity! He suggests students get involved to perpetuate what he has helped to begin at the Office of Student Activities.

Raymond Feliciano

(Continued from page 5)

"I feel that the time has come for students to play a greater and more active role in their education, and that means being responsible for the quality of their education," Feliciano said. "The days of the freebies are over, and we have to start digging a little deeper to pay for the benefits that we actually have. It has been great in the past when the government had the money to supplement a lot of the items, but now they have come the to a point that they don't, so we have to take an active role as students to keep the facilities open here on campus. It is not asking a lot, it's asking a little. The price that we pay for the education that we get, we take into the future, and is well worth the sacrifice over all. The \$5 or \$10 a semester is really a small price to pay if you are looking at your life and your future. If your future is not worth an extra \$5 to \$10, however, then you really need to reassess yourself. What are you about? What are you doing here?"



COOL DEAL

With services and special offers, here's a cool deal that's a smart choice for college students.

- Open a checking or statement savings account with us and get an ATM card, plus a one-year fee waiver on our ATM Frequent User Option (a \$12 value).*
- Open a Student Secured Visa account and get a one year waiver of the Visa annual fee (a \$15 value).*
- We also offer financial aid through Federal Stafford and Federal PLUS loan programs.

See any one of our friendly representatives today!

* Must be a full-time college student (minimum 12 credit hours for undergraduates, 8 credit hours for graduate students), including community colleges. Must show proof of current credit hours (college registration slip or paid tuition) plus an ID when account is opened to qualify for this offer.

American Savings Bank
An **HEI** Company

BANKING FOR LIFE

A voice of reason amidst a world of maniacs

Natalie Merchant's haunting voice and heartfelt lyrics are coming to the Waikiki Ballroom on Dec. 2

Jonathan Isabelo
Staff Writer

"With the smallest step you'll find a way," sang Natalie Merchant when she was the lead singer/songwriter for Ten Thousand Maniacs. Over a decade after that first small step, she's found her way as a solo artist to Hawai'i. On Dec. 2 at the Sheraton Ballroom, Merchant will be making her way to her fans' ears once again, this time, live.

Natalie Merchant was born on Oct. 26, 1963 in Jamestown, New York. Since then she's spent almost half of her life sculpting and polishing her musical talent. Since the mid-eighties, when the Maniacs held only a small cult following, she has crooned through eight albums, two

of them alone.

As a singer, her voice is full and hauntingly distinctive, and seems to come from somewhere deeper than most people dare to look into themselves. In "Jezebel," she sings of a young lady who realizes, after two years of a relationship, that she is no longer in love. "I know your feelings are tender/I know inside you the embers still glow/but I'm shattered/I'm only a veil of blackened coals." She explains, "As an artist, I feel the thing I owe people is honesty. And that's what I've given people over the years—music that makes me feel really deeply."

Many of the songs she's written are done in a historical context. "Orange" from the 1990 album, *Hope Chest*, deals with the atrocity of the

use of agent orange during the Vietnam war. She sings, "Step solemn with the air of reluctant images as rod and hoop shadow children scatter through a Henna arcade/Figures indentured to a windless landscape enduring silence and flame." In "Poor Decherico," she discusses Giorgio deCherico, an early 20th century metaphysical painter who holds a role as a precursor to Dadaism and Surrealism. The slow prodding of "Goldrush Brides" brings attention to a female angle of America's expansion in the 19th century. She sings, "Who were the goldrush brides...do their words survive their yellow fever lives in pages that they wrote...In letters mailed back home their Eastern sisters they would moan as they would read accounts of madness,

childbirth, loneliness and grief." "Hey Jack Kerouac" off of the 1987 release, *In My Tribe*, is a tribute to the Beat generation of the '50s, naming Allen Ginsberg and William S. Burroughs as well. None of the songs she sings is exempt from the accent of her emotions.

Ten Thousand Maniacs' first album, *The Wishing Chair*, came out in 1985. Their more popular songs include "About the Weather," "Candy Everybody Wants," "Verdi Cries," and "Trouble Me." Natalie's voice always was the signature of the band. In 1995, her first solo album, *Tigerlily*, was released. The band behind her (not the Maniacs) stayed in the shadows as her piano and voice made up the body of the songs. If you haven't listened to the album, one that

you've probably heard is "Wonder."

In May 1998, her latest album, *Ophelia*, made its way into record stores. In contrast to the traditional "using a band and rehearsing it," Natalie invited a number of different musicians to play for each different song. Among other arrangements, there is jazz trumpeting by young Chris Botti, psychedelic guitar soloing with Daniel Lanois, and Yunchen Llamo, a Tibetan devotional singer. According to Merchant, "There was a refreshing amount of freedom and spontaneity in this method." Check it out.

And check out the concert. Henry Kapono is the opening act. Doors open to the ballroom at 7 p.m., and tickets are on sale at all Connection outlets for \$26.50.

Soap operas or heroin, which is more addictive?

Charlene Anne Rico
Staff Writer

The sun filters through the louver windows above my bed, spilling onto my comforter and gently kissing my face. I stretch and yawn, rubbing the sleep from my eyes to see what time it is. My Mickey Mouse alarm clock reads, "9:55." I jump up and stumble to the bathroom to brush my teeth. I make my way to the kitchen and make myself a nice hot cup of java, pour myself some granola then head back to my room to flip on the TV to get lost in the world of "Sunset Beach."

I know what you're all thinking, "She watches soap operas? How PATHETIC and LAME is that?" My friends, my dear, dear friends, don't lie, you know you all watch them—I

don't care if you're male or female—you've all been sucked in, don't even try to deny it. I'm not accusing you of doing it on purpose, no one's saying that—I'm just empathizing with you, because I've been there, I know. It always catches you off guard. Maybe you got sick, maybe you're home in the middle of the day and there's nothing on TV, but you flip it on anyway, something catches your eye, and BOOM—they've got you, there's no escape now. You try so hard to deny it, to tell yourself it's a one time thing, but the ending is so climatic, you want to find out what happened, and so you watch it the next day and the next and soon you find yourself turning down trips to surf and neglecting homework and turning into some sort of soap opera fanatic—you find yourself talking about who Erica slept with and who

killed John—with old ladies you've NEVER EVEN MET! Then one day you look in the mirror and wonder what happened to you—to your own life?

So you stop watching, cold turkey—for a year. But one day, you get sick, you flip it on to your "favorite soap" and what do you know? You can pick right up where you left off and it feels like you've never even left Salem, I mean, soap operas.

What's up with THAT? How do we let ourselves get sucked in like that? I talked to this girl, Nicole, 18, she had a lot to say about soap operas, "I think that soaps are so hilarious—the acting is so bad. They try to make it seem so real and everything takes place in this one little made up town—no one ever moves away or takes vacations. If they do take vacations, it's always to Europe

and the only time people leave is if they die. But then they usually always end up coming back. No one ever stays married and when people cheat on each other, it's always with their spouses brother or sister or a best friend, but never an enemy. What's really lame is you get so involved, that these made up characters lives become your life, you start talking about them with your friends and it's like they become real to you. The stupidest thing, though, is that they're all pretty much the same story but we still watch them, it's entertainment."

I couldn't agree with her more.

I'll admit to being victim to soap operas, but there is a way to overcome the disease. Here are five helpful hints to a swift and speedy recovery:

1. Stay healthy, run, walk, swim—

exercise to maintain your body's health so you won't be subject to disease that may force you to stay home and allow you to watch soap operas.

2. Stay very very busy. Don't allow yourself long slots of time during the day in which to waste time watching trash.

3. Destroy your VCR so you won't be tempted to tape them while you're away from home.

4. When you wake up in the morning, look in the mirror and repeat over and over, "Sunset Beach is not a real place, Erica does not exist, I am not a soap star."

5. Find real friends, not the kind on TV who wear lots of makeup, they don't count.

If these steps don't work, there is a 12 step program that you can enroll in, it's called "Soaps Anonymous." Call them, they can help.

The skinny on the Big Mele '98

Dina Jang
Staff Writer

The Big Mele returns to Kualoa Ranch Nov. 15 featuring a line up that's sure to rock the house. The line up this year will be Matchbox 20, Blink 182, Candlebox, Long Beach Dub All Stars, Homegrown, and Hawaii's own Sunburn.

Matchbox 20, because they sold a million records this year, seemed to be the appropriate headliner, according to Karen Last of Goldenvoice.

Goldenvoice will be the producers of the show once again with KPOI being the presenting media partner this year. Some of the other major sponsors this year are Budweiser, Pepsi, Town and Country, Dr. Martens, and Gotcha.

The annual summer Mele is in November this year because there was some difficulty trying to get bands here in the summer. "A lot of bands were not available in the summer and were also asked to play for radio shows on the mainland which offered them more money," said Claudette Bond, promotion director of KPOI.

Last says that availability and timing are very important when trying

to get bands to Hawai'i, and it is easiest to get them when they are on their way back from Asia and Australia. "We also lure bands with the beauty of Hawai'i," said Last.

Matchbox 20 will be on their way back from Australia when they stop for the Mele. Homegrown was originally scheduled to play at KPOI's Poi Fest, but was asked to play for the Mele after the cancellation of Poi Fest.

Last says that the concert will not be in Maui this year as it has been before because there is just not a demand for the 5,000 person show there. However on O'ahu, Goldenvoice is expecting a turnout of about 8000 people.

"This year there will be an alternative village consisting of booths from Sick Dog, Vertical Junkies, Lava Net and other grass roots people who want to appeal to that type of demographic," said Last.

There will also be some special interest groups such as Amnesty International and the Surfrider Foundation. The misting tent will again be there to cool off hot concert goers and this year the Wave Waikēkē will also have a booth with some dj's spinning.

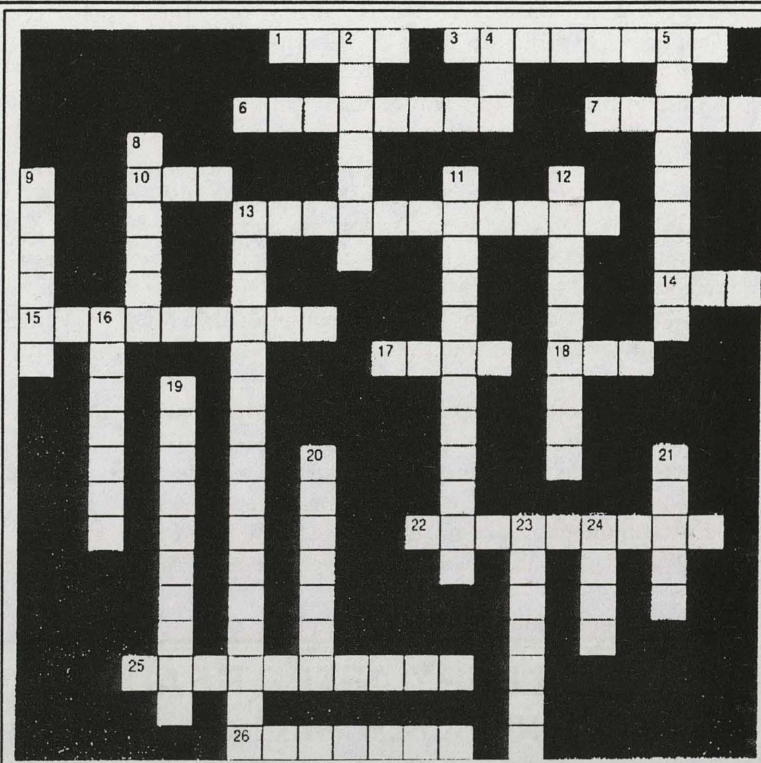
The gates open at 10 a.m. with the show starting at 11 a.m. and tickets are available at all the usual locations.

Music Crossword

Todd the great
Staff Writer

ACROSS

1. U2's lead singer.
3. "Dookie," "Nimrod."
6. "Evenflow," "Alive," "Jeremy."
7. Mariah.
10. _____ DMC.
13. Had their last concert in Hawai'i, in 1997
14. ZZ _____
15. _____ -n- _____
17. A local singer; A group of islands; and Tui's favorite singer.
18. _____ Zeppelin.
22. "Everybody loves _____."
25. Singer of the Titanic Theme song.
26. Local group. "Eruption," "We are only human." DOWN
2. Lithium, Smells like teen



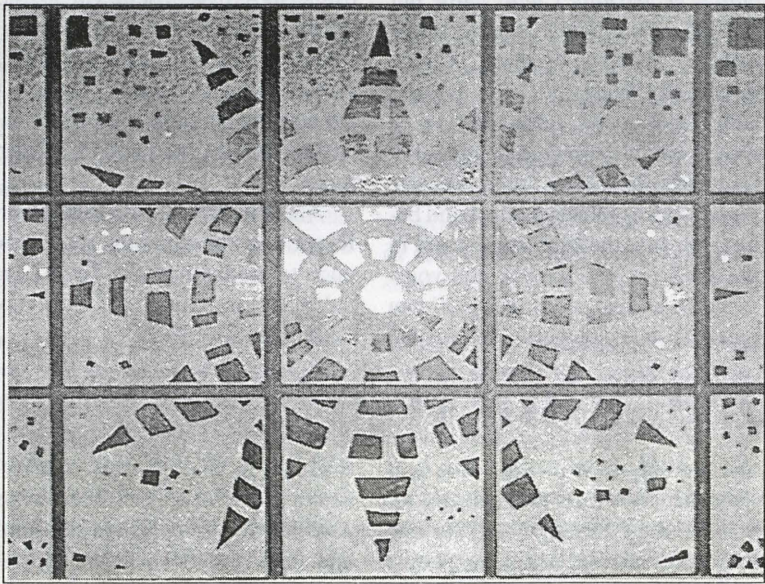
- spirit.
4. "Man on the moon."
 5. "Pink," "I Don't Wanna Miss a Thing."
 8. Garth _____.
 9. _____ Garden
 11. Upcoming concert in Hawaii. The Velvet Rope.
 12. "Enter Sandman," "Unforgiven 2"
 13. "Today," "Bullet with Butterfly Wings," "To-
 - night, Tonight"
 16. Imbruglia.
 19. "Lucy's in the Sky with Diamonds," "Yellow Submarine," Fab 4.
 20. _____ Mode.
 21. "We are the champions"; "Gimme the prize"
 23. _____ Manson.
 24. _____ against the machine.

Can you identify where on campus this picture was taken?

If you can, then fill out the entry blank below and bring it to Lama 119 or just e-mail us your answer and information to: kapi@leahi.kcc.hawaii.edu

Your subject line should say "Where is it?"
One correct answer each week will win a surprise gift.
Winners and prizes will be listed in the Kapi'o.

Good Luck!



Location: _____
Name: _____
E-mail: _____
Contact #: _____

Answer to last week's puzzle: In the KCC library above the front staircase. Winner of lunch at 220Grille: Jaridan M. Choy
Runners Up: Daniel Thiel, Elisha Grany, Ngon Bui

Bamboo Ridge Birthday Bash

Sun. afternoon, Nov. 22 at 1 - 4 p.m. in the McKinley High School Cafeteria. Tickets presale are \$15 and \$20 at the door. An afternoon of food, a Silent Auction, special booths and good fun. Tickets purchased will entitle you to participate in the "birthday party" festivities which will include:

-A Silent Auction. This will be your opportunity to bid on special items including art by John Young, Doug Young and Cora Yee. Ceramics by Toshiko Takaezu, Xander Cintron, Doug Davenport, Yukio Ozaki and Kyle Ino. Handmade jewelry by Cathy Song, a handmade KoAloha ukulele, silk aloha shirts by Avanti Fashion, one hour classroom visits donated by several local authors (great for teachers or for your child's class), a brand new hotel quality Serta mattress and box spring, the chance to go on a restaurant review with John Hecka thorn, Honolulu Magazine editor and food reviewer, lunch with Lois-Ann Yamanaka and many more fun items in all price ranges.

-A special Bamboo Ridge Big Bumboocha plate lunch served by the Metcalf Street lunch wagon.

-Special booths with Cane Haul Road products, a special booksale of autographed books by local as well as mainland authors.

-Entertainment by jazz guitarist Earl Seki and friends, Hawaiian music by Waipuna, Jon Yamasato of Pure Heart and guest MC James Grant Benton.

For more information or any questions please call 626-1481.

Do you get SLEEPY AFTER READING ONLY A FEW PAGES?

- Do you count the number of pages that are assigned?
- Are you a slow reader?
- Do you often have to reread for meaning?
- Do you have trouble concentrating when you read?
- Do you get headaches/eyestrain when you read?

If you experience any of the above, you may have a special type of visual problem that is not correctable with glasses, contacts or surgery.

We can solve these common problems and make you a better reader.

DR. CLAYTON GUSHIKEN
Optometrist, Specializing in Reading Problems
941-3811

Job Opportunities

The following job listings can be found at the Job Placement Office in 'Ilima 103 or call 734-9514.

Publicity

Duties are to write news releases, create flyers, prepare public service announcements. Newsletter: graphic design, write articles, edit copy. Approximately 3 hours a week.

Clerk

Part time clerical help needed. Duties consist of light typing (word-processing), input information using Excel program. There are some phone duties. Qualifications are knowledge of Windows 95 and MS Excel program. Prefer morning hours and flexible days. Mon- Fri 12-15 hours a week, start immed.

Cashier and Host

Looking for American Restaurant and Japanese Restaurant part time or full time worker. Work hours start at 6 p.m. to 10 p.m. Starting pay is \$6.50 to \$7 per hour (depending on experience)

Cashier

Part-time 30 to 35 hours a week. Open schedule. \$6 an hour. Duties include ringing up registers and stocking shelves.

In-Home Care Provider

Willing to work around your school schedule. Morning and afternoon shifts, Monday to Friday. Duties include assisting CBA patient with basic care and companionship. Prepare food, bath, assist physical therapist and other care. Some experience caring for patients, preferably female woman, intelligent, alert. Enjoys conversing about current affairs. Person must be strong-able to lift patient- and fluent in English.

Workshops

Exploring Nursing Careers

Overview of KCC's Nursing programs, admissions requirements and career opportunities. Programs covered: Registered Nursing, Practical Nursing, Nurses' Aide and Care Home Operator. Presented by Elva Yoshihara (Nursing Advisor) on Tues., Nov. 10 from 1 - 2:30 p.m. in Kopiko 240.

Registered Nursing

Information session on admissions, program requirements and career opportunities. Presented by Bree McKenzie (KCC Nursing Advisor) on Thur., Nov. 19 from 3 - 4:30 p.m. in Kopiko 240.

Medical Assisting

Program orientation/information session on admissions, program requirements and career opportunities. Presented by Joan Young (Program Director) on Thur., Nov. 12 from 9 - 11 a.m. in Kauila 109.

Food Science and Human Nutrition, Dietetics Option: UH Mānoa

The only dietetics option offered within the State of Hawai'i. learn about majoring in the field of dietetics at UH-M and the various career opportunities. Presented by Anne Shovic, PhD, RD (Program Director for UH-M Dietetics Program) and Regina Ewing (KCC Counselor) on Mon., Nov. 16 at 12 - 1:15 p.m. in Iliahi 103.

Music, Theatre and The Arts

Filipino Artist's Exhibition

Organized by the Asian Art Museum of San Francisco in association with the Philippine Centennial Foundation/USA, it features over 50 works of art-paintings, sculptures, photography, video, fabric works and installations-by Filipino artists. On display at the University of Hawai'i Art Gallery from Nov. 1 - Dec. 11.

"Fall Footholds"

The University of Hawai'i's Department of Theatre and Dance presents its annual dance student showcase. This year dancers will share the stage with students from the Music Department as performers work together and individually to present new and traditional work from around the world. This is an Earle Ernst Lab Primetime production performed Wed., Nov. 11 through Sat., Nov. 14 at 8 p.m. and Sun., Nov. 15 at 2 p.m. Prices are \$8 Adults; \$6 Students, Seniors, Military, UH Faculty and Staff; \$3 UHM Students with a valid Fall 1998 I.D.

Vive La France

The Honolulu Academy of Arts will highlight the food, art and culture of France with a variety of entertainment and educational activities including tours of the French art collection, musical performances, lectures, French film series and special French-inspired cuisine in the Garden Cafe. These are just some of the activities planned during the second annual French Festival of Hawaii, Nov. 7 through 22 at venues throughout the island.

"Mele Kanikau: A Pageant"

Mele Kanikau (song of mourning) blends realism and the supernatural in a powerful lament about the passing of traditional Hawaiian culture. Complete with artificial flowers, projected rainbows and smiling hula dancers, the annual Hawaiian pageant is almost ready for presentation when the director gets called away to Las Vegas. Her replacement is a reclusive kumu hula who has been living in a secluded native Hawaiian settlement. His drinking habits, sexual behavior, insistence on speaking Hawaiian, scorn for the ali'i class and disdain for the show's slick professionalism create resentment and tension among the cast. Written by the late playwright John Kneubuhl in 1975, Mele Kanikau has never before been produced. Showing at the Kumu Kahua Theatre on Nov. 5, 6, 7, 12, 13, 14, 19, 20, 21, 27, 28 at 8 p.m. and on Nov. 8, 15, 22, 29 at 2 p.m. For more information on tickets call 536-4441.

House of Buccellati Lecture

Larry French, vice president and director of Buccellati California will present a free lecture on the House of Buccellati, the world famous family of Milanese goldsmiths and jewelry designers, in the Academy Theatre on Sun. Nov. 15 at 2 p.m. No advance reservations are required, but seating is limited and offered on a first-come, first seated basis. A reception, co-hosted by the Friends of Italy, will follow the lecture.

Noel Lee at the Honolulu Academy Theatre

An American born composer and pianist, Noel Lee lives and works in Paris. In a long and distinguished career, Mr. Lee has recorded 188 LP's and CD's. This year the French Department of Cultural Affairs awarded him the grade of Commandeur de l'Ordre des Arts et Lettres. His program will include: Debussy's Twelve Preludes, Schubert's Sonata D. 625 and 505, Henri Dutilleux's Three Preludes and two of his original compositions, Distances and Sonatine. Sponsored by the Hawaii Music Teachers Association. Nov. 13 at 8 p.m. \$15 General; \$12 Members; \$10 Students and Seniors.

Academy Theatre Films

Tickets are \$5 general, \$3 for members and may be purchased on the day of screening at the Academy Box Office at the museum's main entrance on Beretania Street or at the Academy Theatre door, on Kinau Street, one half hour before showtime. And coming soon...

"Un Air de Famille (Family Resemblance's)"

From the director of, "When the Cat's Away" comes this comedy based on Jean-Pierre Bacri's piquant stage play about a neurotic family, unhappy in it's own distinct way. Unfolding over the course of a reunion at a drab provincial cafe, long simmering tensions between mother, sister, favored son and not-so-favored son come to a boil, seen through the eyes of a waiter, the only unfettered soul among them. Winner of three Cesar awards, this smartly wrought film is a witty and intelligent verbal farce that hilariously exposes the kinds of skeletons lurking in every family closet. Showing Nov. 15 at 4 p.m., Nov. 16 at 7:30 p.m. and Nov. 19 at 1 p.m.

"Seventh Heaven"

This arresting new film by the director of "A Single Girl" stars Sandrine Kiberlain as a woman troubled by fainting spells, kleptomania and an inability to enjoy sex. When a doctor interested in her case volunteers to take her as a patient, hypnosis proves to be therapeutic, allowing her to enjoy the "seventh heaven" of full, erotic pleasure. Ironically, her husband reacts with fear and anger as his wife begins to blossom. Director Jacquot's special talent lies in his psychologically astute depiction of women and their desires and his dexterous handling of the seesawing sexual dynamics between husband and wife. Showing Nov. 17 and 18 at 7:30 p.m.

Hand Drumming Basics

Traditional West African Drumming with djembe and dundun on Thursdays at 6:30 p.m. Conga class with clave, shekere and bell on Saturdays at 4 p.m. Loaner drums are available. Be sure to bring a chair or stool. Classes are \$10 and ALL SKILL LEVELS are welcome.

Classes are at 1007 Waimanu Street on the second floor. For more information please call: 377-DRUM, the Honolulu Rhythm Line.