

## Parking problems persist at KCC

By Vanice C'ham  
Kapi'o Editor-in-Chief

"Students can expect to experience traffic problems particularly during the first few weeks of this semester," said Vernon Wong, Auxiliary Services Officer. He recommends that drivers come early in the morning and when possible carpool or ride the bus.

Drivers will not be able to enter parking lot D (by the portable classrooms) from 18th Avenue due to ongoing construction in that area.

Access to parking lot D will be from Kilauea Avenue, near the 18th Avenue intersection.

Parking in Lot D will also be tighter than usual because the con-

tractor for Bldg. O, which is being constructed next to staff parking behind Bldg. 933 will be excavating for a drain line. They will be taking up about five to six spaces at a time.

Wong said campus security will be lenient with students parking in staff or other areas not designated for student parking until the first of February. However, by law cars will be towed if parked in handicapped spaces without proper authority, or if the car is blocking another car or a fire lane.

When parking, drivers need to remember that not only do other cars need to be able to pass by, but that enough room must be left for a fire truck and other emergency vehicles.

hicles.

The parking area behind Bldg. 933 will be designated for staff parking and the 26 stalls lost to students in that area will be replaced with some of the designated staff stalls in other parking areas at KCC. This trade in staff and student parking areas was done to minimize traffic on the narrow road past 'Ohi'a.

Leslie Tanaka, Director of Administrative Services, hopes that next fall the Cannon Club parking area will be available to students but presently it is off limits.

Students may also park in the Diamond Head Theatre lot, but they must observe the signs designating parking for DHT staff.

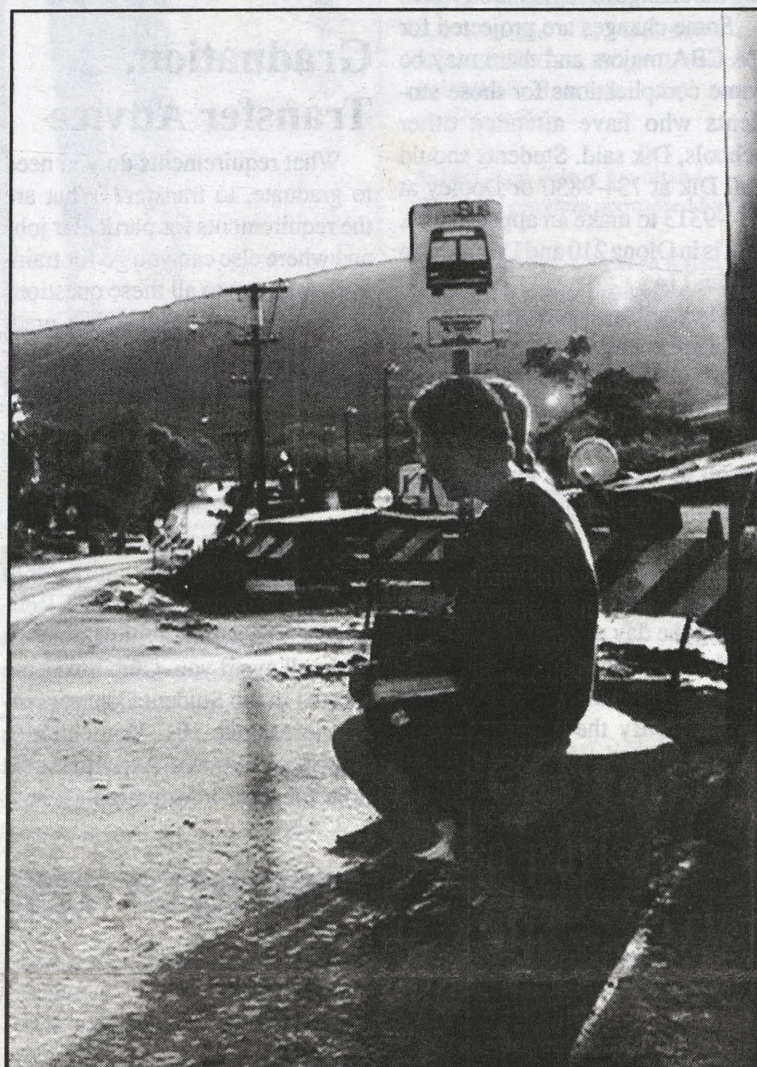


Photo by Bryan Sekiguchi

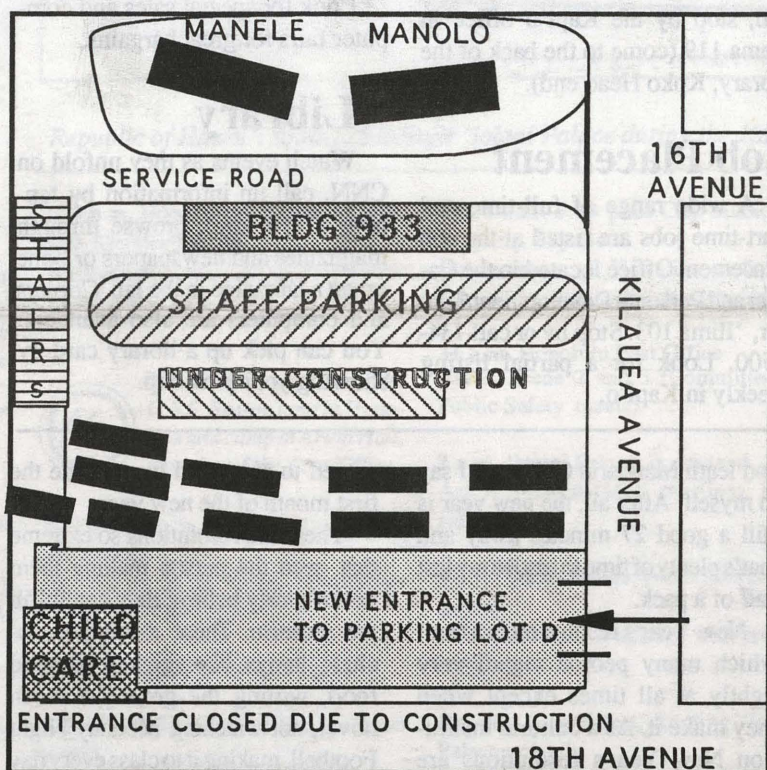
### Where is the bus stop?

Students wait for a bus among the construction rubble on 18th Ave. A path through the construction has been made for pedestrians to access the portable classrooms from 18th Ave.

The 18th Ave. bus shelter was moved and a portable stand and concrete bench was put up in its place as workers dug a trench for drain pipes. Students should also consider getting off the bus one stop earlier on Kilauea Ave. to avoid the construction.

### Can you find a parking space? Try . . .

Parking lot A, (only if you have a decal from the lottery).  
Parking lot B.  
Parking lot C.  
Parking lot D (enter from Kilauea Ave., 18th Ave. entrance is blocked by construction).  
Diamond Head Theatre parking lot (watch for signs).  
Any legal off-street parking.  
Parking lot E is for staff parking only.



## Renovations made to Kalia

By Vanice C'ham  
Kapi'o Editor-in-Chief

The Arts and Science department chairs and staff have moved back to Kalia. In Nov. '92, these offices were moved to Manele because several individuals working there complained of health problems associated with the environment in Kalia 101 and 111.

Faculty used other copying facilities on campus while the workroom was closed.

James Becker, chair of Social Sciences, says the fumes existed in the rooms from January, when the rooms were first used. Becker says he was affected physically by something in Kalia. Others had similar experiences.

"The pain was just behind my

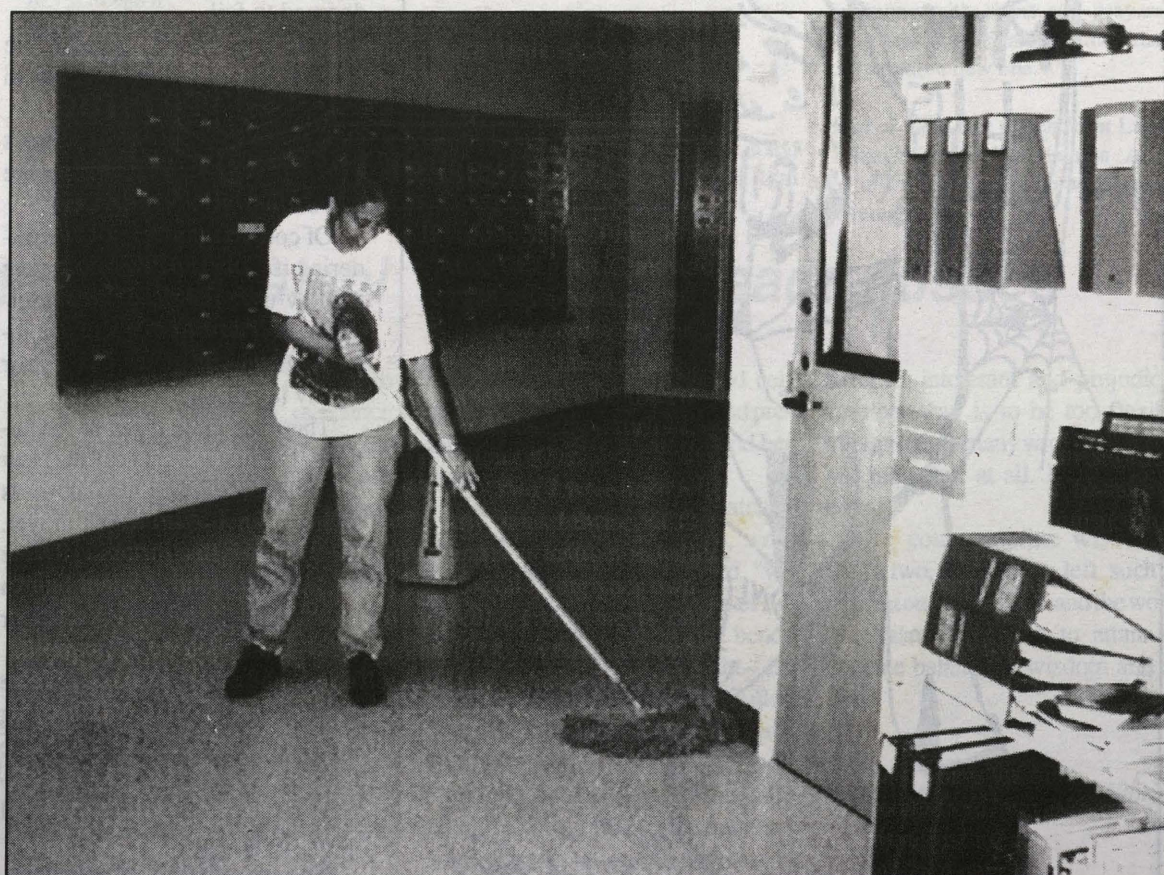
eyes," Becker said, he also suffered from burning eyes, dry mouth, dry tongue, and an inability to concentrate on his work.

A series of attempts to correct the problem, which included adding fungicide to the air conditioning and several lab tests proved futile.

As a result of continuing complaints, the carpet was removed from the main office, the xerox machine was relocated to another part of the office, and the offices were vented by opening all doors and windows and blowing fresh air through.

Leslie Tanaka, Director of Administrative Services, believes these measures should solve the problem.

"There were no conclusive results from the lab tests," he said "we won't know for sure until people are in there and working."



Carolyn Morita prepares tiles for waxing in Kalia.

Photo by Bryan Sekiguchi



# Helps, services & other goodies for students

## For Pre-business, Financial Aid TIM majors

Students who want to eventually transfer to the College of Business or the School of Travel Industry Management should see advisers Ibrahim Dik or Kevin Dooley during the change of registration week.

Some changes are projected for the CBA majors and there may be some complications for those students who have attended other schools, Dik said. Students should call Dik at 734-9830 or Dooley at 734-9313 to make an appointment. Dik is in Olona 210 and Dooley is in 'Ilima 114.

They will provide you with the latest information on credit requirements, GPA criterion and prerequisite information. They can also help you plan the most efficient way to enroll in classes and give you tips on making the transfer smoothly.

## Security

A security officer is available during the day and in the evenings. Students who have experienced any trouble from theft to vandalism should notify the officers so that they will know to monitor particular areas more closely. Call 734-9542.

## New Years resolutions, doomed to failure

A large group of friends have gathered together on the eve of the last day of the year.

The conversation runs the gamut from how well business has been to the recipe of the hosts' guacamole.

The mood of the party is light hearted and expectant until about half an hour before midnight when someone asks the inevitable question, "What's your New Years Resolution?"

## Financial Aid

The Financial Aid Office handles a plethora of money oriented requests. For information on scholarships, grants, tuition waivers, emergency loans, and on-campus employment, visit the office at 'Ilima 102 as soon as possible.

## Graduation, Transfer Advice

What requirements do you need to graduate, to transfer? What are the requirements for particular jobs and where else can you go for training? Answers to all these questions and more are available at the Career and Personal Development Center in 'Ilima 103. Stop by and make an appointment to see a counselor.

## Clubs

Interested in ceramics, plants, help coping with your family, or in the many cultures in Hawaii? Religious clubs, ethnic groups, interest clubs all await you. Club boxes are located in the Student Congress office in Manele 101. You can also stop by at Student Activities next door for more information.

## Student Activities

The KCC Student Activities is located in Manele 103, and offers a wide variety of invaluable services. Student activities will post your ads, sell Consolidated Theaters movie passes for four dollars, and rent lockers for book and supply storage. In addition, Student Activities handles Lost & Found, and plans student activities and social events involving KCC.

## Student Congress

Have a complaint, a request, an idea to make this school a better place? Stop by the Student Congress office in Manele 101. Meetings are held Saturday mornings, twice a month. Next meeting is scheduled for Jan. 16 at 9 a.m.

## Student Publications

If you have an opinion, a beef, something to sell, an essay you'd like to share or just a good joke to tell, stop by the Kapi'o office in Lama 119 (come to the back of the library, Koko Head end).

## Job Placement

A wide range of full-time and part-time jobs are listed at the Job Placement Office located in the Career and Personal Development Center, 'Ilima 103. Stop by or call 734-9500. Look for a partial listing weekly in Kapi'o.

and learn Mandarin Chinese," I say to myself. After all, the new year is still a good 27 minutes away and that's plenty of time to smoke my last half of a pack.

New Year's resolution is a term which many people regard very lightly at all times except when they make it. As a cultural institution New Year's resolutions are doomed to fail.

This is primarily because the resolutions are not thought out in advance.

No intelligent reasoning goes into the person's resolve. He or she just blurts out a wish.

Of course running around wondering if the local keikis are going to blow-up your house before midnight or trying to dance while legally intoxicated doesn't help your ability to reason.

There are three types of resolutions. The first is what I call the New Year's Day resolution, also known as the Bowl Game Watcher's Prayer. This is a heavenly plea to take or spare the asker's life depending on the severity of excess on the prior evening.

This type of resolution, often made in the lavatory, promises refraining from liquor consumption in exchange for returned health and almost always begins with, "I swear I will never drink again..."

The second type of resolution, The Everest Commitment, is guar-

Lost and Found  
is now located  
in MANELE 103

## Computing Center

The Computing Center located in Iliha 123 is currently stocked with sophisticated Macintosh and IBM computers for your computing and word processing needs. Students are required to participate in an orientation session before using the machines. Again, a library card is required.

Mon to Thurs.....8 a.m. to 9 p.m.  
Friday.....8 a.m. to 4 p.m.  
Saturday.....9 a.m. to 1 p.m.  
Sunday.....1p.m. to 5 p.m.

## Bookstore

The Bookstore in 'Ohia 116 offers not only books, notepaper and pens but also diskettes, art supplies, shirts, bags and other novelties. The Bookstore is also the only place you can get a candy bar that isn't melted. Look for special sales and computer fairs for great bargains.

## Library

Watch events as they unfold on CNN, call up information by tapping a few keys, browse through magazines and newspapers or bone up on a language in the lab. Copiers and computers are also available. You can pick up a library card by showing your pink slip.

anteed to crash and burn inside the first month of the new year.

These are resolutions so extreme that even the person making them doesn't truly believe they can fulfill the promise. These resolutions include things like: giving up solid food, writing the great American novel, not watching Monday Night Football, making it to class every day or giving country music a chance.

The final breed of New Year's Resolution is the garden variety which most of us make and break annually. These are the promises to lower our cholesterol, cut needless spending, watch a little less TV or recycle to help the environment.

Although these resolutions have the greatest chance of surviving they are the ones taken the most lightly.

We push them off promising to start next week and console ourselves when we break them by saying, "I really had a tough day," or, "Hey I deserve this."

Maybe next year when resolution time rolls around the best thing to do is not make some Herculean oath that you can't fulfill but look back on the good things you did last year and try to improve a little bit.

Then finish your drink with the boss's wife and sing "Auld Lang Syne" without worrying about dumping your bad habits.

Stephan Hart Robley  
Section Editor

## Learning Centers

Three independent centers constitute the valuable learning assistance programs here on campus. These centers combine top of the line computers, equipment relevant to various courses, and a relaxed environment with knowledgeable, helpful student tutors who are prepared to assist in any way they can.

## The Learning Assistance Center (LAC)

Located in Iliahi 228, the LAC provides a quiet place to study and receive tutoring in Math and English. In addition, limited tutoring in accounting, history, and selected foreign languages is also available during the centers operating hours: Mon. to Thur.....8 a.m. to 9 p.m. Friday.....8 a.m. to 4 p.m. Saturday.....9 a.m. to 1 p.m.

The LAC's various services all require a library card, so get your piece of plastic at the main desk of the library with your pink course list as soon as possible.

## Health and Natural Science Learning Assistance Center (HNSLAC)

Located on the second floor of Koki'o in Room 202, the HNSLAC provides tutoring in biology, botany, chemistry, microbiology, physics, science, and zoology. The HNSLAC also houses equipment and media materials that can be accessed:

Mon. to Thur.....8 a.m. to 8:30 p.m.  
Friday.....8 a.m. to 4 p.m.  
Saturday.....9 a.m. to 1 p.m.

## Business Education Learning Assistance Center (BELAC)

Basic typing skills can be improved at KCC's BELAC between the hours of:

Mon., Wed.....8 a.m. to 7:30 p.m.  
Tues., Thurs.....8 a.m. to 5:30 p.m.  
Friday.....8 a.m. to 3 p.m.

BELAC is located in the portables, Bldg. J Room 3.

## Health Insurance

Students are eligible for student health insurance available to all students in the University of Hawaii System. Informational packets are available at the Career and Personal Development center, 'Ilima 103.

## Kapi'o

4303 Diamond Head Rd.  
Honolulu, HI 96816  
ph 734-9167

Kapi'o is published every Tuesday by the Board of Student Publications of Kapiolani Community College. It is funded by student fees and advertising and reflects the views of its editors and writers who are solely responsible for its content. Circulation is 2000.

Kapi'o welcomes contributions to the paper. Editors reserve the right to edit all submissions for length, grammar and libel. Publication is not guaranteed.

Advertising is welcomed. For information on deadlines and ad rates, call us.  
Editor-in-Chief ..... Vanice C'ham  
Page Editors ..... Bryan Sekiguchi  
..... Lisa Masaki, Matt Rauls  
..... Stephan Robley  
Photo Editor ..... Bryan Sekiguchi  
Adviser ..... Wini Au



Cartoon by Reuben Young



# Play, prayer mark 1893 overthrow of Hawaiian monarchy

On Jan. 17, 1893, sovereign Hawaii was overthrown by American soldiers. Annexation and eventual statehood had, in this way, been thrust upon Hawaii.

Today, Jan. 1993, the overthrow has left feelings of bitterness in many who feel the

overthrow was morally and fundamentally wrong. The long debated issue of the restoration of Hawaiian sovereignty will surely not come to an end in this year, the one hundredth anniversary of the overthrow.



**12 p.m.** Queen Lili'uokalani Statue Opening Ceremony. 100-hour vigil begins at 3 p.m.

**6:45 p.m.** 'Iolani Palace Lighting of 100 torches.

**8 p.m.** 'Iolani Palace 4-hour kupuna vigil.



**1893:** Lili'uokalani announces plan to proclaim a new constitution. Her ministers refuse to sign. Committee of Public Safety passes annexation resolution 21-1.

**8 a.m.** 'Iolani Palace

As a symbol of the death of the Hawaiian nation and the overthrow of the Queen, the palace will be draped in black bunting. Spiritual ho'okupu.

**11 a.m.** Ali'iolani Hale

Hawaii State Legislature Commemoration of the 100th anniversary of recessing of the 1892 legislature.

**12 p.m.-1 p.m.** Kamehameha Statue Royal Hawaiian Band Concert.

**5 p.m.** 'Iolani Palace Bandstand Royal Hawaiian band concert.

**8 p.m.-12 a.m.** 'Iolani Palace Kupuna vigil.



**Committee of Public Safety** tells Queen's ministers they intend to declare the throne vacant to frighten them into persuading the Queen to sign a statement indicating she had abandoned her new constitution.

**5 a.m.** 'Iolani Palace

Enactment of the armed invasion and overthrow of the Hawaiian monarchy in "The Overthrow in Five Acts," produced by Hui Na'auao and Victoria Kneubel. Act 1, scenes 1 and 2.

**10 a.m.** 'Iolani Palace, front steps Act 1, Scene 3 (Government ministers meet).

**10:30 a.m.** 'Iolani Palace, Bandstand, Act 1, Scene 4 (Meeting with Reform Party).

**12 p.m.** 'Iolani Palace, Ali'iolani Hale Act 1, Scene 5 (Queen recesses legislature).



Photo courtesy of Hawaii State Archives

Republic of Hawai'i soldiers blockade 'Iolani Palace during the 1895 Wilcox Revolt.

**2:20 p.m.** Honolulu Post Office Courtyard, Merchant Street Act 2, Scenes 1-3 (Committee of Public Safety is formed).



**1893:** Marines from the U.S.S. Boston land in Honolulu and camp at Arion Hall, now site of the Post Office.

**7:30 a.m.-5 p.m.** Royal Mausoleum on Nu'uuanu Ave. The curator of the Royal Mausoleum invites ho'okupu to the ali'i.

**9 a.m.-4 p.m.** Mission Houses Museum grounds Arts and crafts demonstration and food booths.

**9:50 a.m.** 'Iolani Palace Act 3, Scene 1 (Queen addresses her people).

**10 a.m.** Hawai'i State Library Hawaiian displays, demonstrations, information.

**10:30 a.m.-5:30 p.m.** City Municipal Building, Sky Gate Free program of Hawaiian music and hula, with songs for and about the Queen.

**11 a.m.** Honolulu Post Office Act 3, Scene 2 and 3 (Committee of Public Safety meets).

**2 p.m.** 'Iolani Palace, Bandstand Act 3, Scene 4 (Mass meetings, both sides).

**4 p.m.** 'Iolani Palace, Pohukaina burial mound Act 3, Scene 5 (Pagentry and prophecy).

**5 p.m.** King Street, fronting 'Iolani Palace grounds. Act 3, Scene 6 Royal Hawaiian Band concert, 'Iolani Palace Bandstand.



**1883.** U.S. troops occupy government buildings; the Queen yields. U.S. Minis-

ter Stevens recognizes Provisional Government.

**Hawaiian groups march to 'Iolani Palace**

**4:30 a.m.** from Royal Mausoleum in Nuuanu

**7 a.m.** from Mililani Street

**8 a.m.** from Aloha Tower

**8 a.m.** St. Andrew's Cathedral Service sponsored by COHO.

**9 a.m.** Hawai'i State Library Hawaiian culture demonstration including medicinal plants, lauhala weaving, tapa beating, and poi pounding.

**9:30 a.m.** 'Iolani Palace Bandstand Chants by representatives of all islands.

**10:30 a.m.** 'Iolani Palace Awa ceremony.

**12 p.m.** 'Iolani Palace bandstand Speakers on Hawaiian sovereignty, song, hula and a vigil for the Queen on 18th Annual Sovereign Sunday.

**12:30 p.m.** 'Iolani Palace Rev. Dr. Paul Sherry, president of the United Church of Christ presents an apology to the Hawaiian people for the church's complicity in the overthrow.

**3 p.m.** 'Iolani Palace Act 4, Scene 1 of "Overthrow" near King Street Gate; Scene 2, rotunda of Ali'iolani Hale; Scene 3, outside Ali'iolani Hale.

**3:30** 'Iolani Palace bandstand Speakers program sponsored by OHA.

**4 p.m.** Courtyard between Kaumakapili and St. Elizabeth's churches An apology to the Hawaiian people by the UCC on behalf of their predecessors, the American Board of Foreign Missions, which sent the first missionaries to Hawai'i.

**5:30 p.m.** Service at Kawaiaha'o Church followed by torchlit walk to 'Iolani Palace, then to Queen's Statue. Ceremonies at the front gate of 'Iolani Palace to end the 100-hour vigil will follow.

**6:15 p.m.** King Kamehameha statue Torchlight vigil.

**6:30 p.m.** 'Iolani Palace, front steps and grounds Act 5, Scenes 1 and 2 (Queen Lili'uokalani yields).

**7 p.m.** On KHET "Betrayal" a docu-drama about the overthrow of the Hawaiian monarchy. Repeats Jan. 22 at 10 p.m.



**1883:** Queen Lili'uokalani writes President Harrison her reasons for surrendering to the U.S.: "The futility of a conflict with the United States, the desire to avoid violence and bloodshed and the destruction of life and property, and the certainty which I feel you and your government will right whatever wrongs may have been inflicted upon us ...."

**7 a.m.** 'Iolani Palace "Ho'omaka Hou: A New Beginning," ceremony with chant and prayers to close this chapter in Hawaiian history and to start a new one.

Start of three-day march from La'ie to 'Iolani Palace by Hui Malama 'Aina O La'ie to draw attention to Hawaiian sovereignty.

## Martin Luther King, Jr., Queen Liliu'okalani stood for peace, justice

We're living in an age when many point to the convergence of momentous occurrences and occasions. When our givens are being challenged by geopolitical and other forces. When the conflict and contact of different cultures and values has caused unmatched national and international examination and exchange.

How propitious for this state then, is the coming together of the 100th year end of Hawaii's last esteemed monarch, Lili'u'okalani and, closer to contemporary times, the 25th year marking the assassination of Martin Luther King, Jr.

Lili'u'okalani and King were cherished champions of their people. But

their definition of "people" was broader than the confines of country, race, gender, religion or class. While each had an inarguable involvement in, commitment to and appreciation of their culture of origin, they never lacked similar acknowledgments of others.

Their leadership sprang from this ability to pass beyond limitations imposed from within or without. Lili'u'okalani suggested "if we could see our likeness, could we not learn to be tolerant of our differences?" King, in his last Sunday morning sermon said "we are tied together in the single garment of destiny... whatever affects one directly affects all indirectly."

King told the National Press Club in 1962 that nonviolent resistance would not serve as a substitute for litigation or legislation, "but those who adhere to the method ... recognize that legislation and court orders tend only to declare rights; they can never thoroughly deliver them .... Only when people themselves begin to act are rights on paper given lifeblood."

What each delivered to the people and to paper was quiet, resolute action and spiritual lifeblood. For Lili'u'okalani this was evident in her refusal to endanger her people or dignity by encouraging insurgency, in the profoundly moving body of

mele and writing she authored celebrating her beloved country and preserving the history of herself and her people.

For Dr. King it was unmatched and much-celebrated oratory, writing and action. He suggested "we shall overcome because the arc of the moral universe is long, but it bends toward justice ... Carlyle is right—no lie can live forever... William Cullen Bryant is right—truth crushed to earth will rise again."

Lili'u'okalani died with the same faith, declaring that "you must remember never to cease to act because you fear you may fail .... The way to lose an earthly kingdom is to be in-

flexible, intolerant and prejudicial. Another way is to be too flexible, tolerant of too many wrongs and without judgment at all. It is a razor's edge."

We commemorate wisdom of these two, who have left such an imprint on Hawai'i Nei and the world. We share their wish to attain the delicate balance of wisdom and action.

Exerpts taken from an editorial written by Vernyce Dannells Martin Luther King, Jr. Commission



FYI...FYI...FYI...FYI...FYI...FYI...FYI...FYI...FYI...FYI...FYI...FYI...

## Koa Gallery: Now playing...

**"Running EA" 1990 13/30 lithograph**

Exhibition of prints by New Zealand artist Michel Tuffery will be on display from January 13 to February 3. Gallery hours are Monday-Friday 9 a.m. to 3 p.m. and Saturday 10 a.m. to 1 p.m.

## Exhibits



**Treasures of Hawaiian History**, will be extended until Feb. 12, at the UH Art Gallery. Admission is free. Gallery hours Mon. to Fri. 10 a.m. to 4 p.m. and Sun. 12 to 4 p.m.

**Tattoo Traditions of Polynesia**, including lecture by Tricia Allen on the rich legacy of the art Polynesian tattoo on Jan. 16 in the Academy of Arts Theatre at 4 p.m.

**Ceramic exhibition** by Hawaii-born artist Toshiko Takaez, an instructor at Princeton. She is known best for her vessels, her forms are sensual and volumetric and her surfaces atmospheric and spatial. The exhibition at the Academy of Arts is a comprehensive retrospective up to 1981, with featured works from '82-'92.

Showing at Jan. 21 to 28 on the 2nd Floor Galleries.

## BRAND NEW YEAR! BRAND NEW STORES! BRAND NEW OPPORTUNITIES!

Make a positive change and train to be a Manager at the



**\$24,000/ year + BONUSSES!**

If you have a can-do attitude, past demonstrable results and a strong mechanical aptitude, come join our winning team. **Benefits** include bonus incentives, 401 (k), profit sharing, medical, vacation and an opportunity to have a Fun-tastic career. Send resume to or apply in person at:

**FUN FACTORY, INC.**

Personnel Dept.  
91-246 Oihana Street  
Ewa Beach, HI 96707  
Ph. 682-5767

**MILITARY PERSONNEL AND DEPENDENTS  
WELCOME!**

*An equal opportunity employer.*

## Theatre



"Eurydice," an intercultural dance-drama based on an ancient Greek myth opens at the Kennedy Lab Theatre on Jan. 21 at 8 p.m., and continues on Jan. 24.

"Eurydice," reinterprets the Greek legend of Orpheus, in that it is Eurydice who journeys to the underworld to recover her dead lover, Orpheus. The drama draws upon Asian as well as Western performance traditions.

For more information call 956-7655.

Director Glenn Cannon has announced audition dates for Kennedy Theatre's March production of James Mclure's comedies "Lone Star" and "Laundry and Bourbon." Interested actors can audition on Jan. 21 and 22 from 2:30 to 5 p.m. at Kennedy Theatre.

For more information call 956-7677.

**Diamond Head Theatre** presents "Blues in the Night," an exciting review with the music of Duke Ellington, Bessie Smith, Johnny Mercer and other jazz greats, starring Punahou graduate and Tony Award-winning singer-dancer Leilani Jones, Jan. 15 - Feb. 7, with performances Wed. through Sat. at 8 p.m., Sun. at 4 p.m.

For more information call 732-0274.

**Diamond Head Theatre** holds final auditions for "Chicago," the musical vaudeville book by Bob Fosse and Fred Ebb, lyrics by Fred Ebb and music by John Kander, on Jan. 16 and 17 in the DHT Rehearsal Hall. The brassy musical runs March 5 - April 4 at DHT. Call 734-8763 for audition information and scripts.

## Activities



\* **Ka'ao o Honolulu** (Stories of Honolulu) 12 unique walking tours into Hawai'i's past include:

#1. Na Ali'i: Kings and Queens of Hawai'i. Stories of Hawai'i's ruling chiefs will be told in downtown Honolulu by storyteller Woody Fern. Jan. 14, 5:30 - 7:30 p.m.

#5. The Talk of the Town: controversies in the Kingdom. What trauma could have caused Nahienaena, sister of Kamehameha II and III; to die on the beach in Lahaina? Tour historic sites in downtown Honolulu. Jan. 21, 6-8 p.m.

Preregistration and advance payment are required.

**Hawaii bicycling league**, Kuliouou Trail Offroad, Jan. 16, 8 a.m. at Kapi'olani Park Bandstand. Peacock Flats Offroad, Jan. 17, 7 a.m. at Waialua Intermediate. Martin Luther King Day, hike and bike! Jan. 18, 8 a.m. at Kapiolani Park Bandstand. Call 735-5756.

**Acting and Dancing Classes** at the Diamond Head Theatre for spring '93. Deadline for registration Fri. Jan. 22. For information call 734-0274.

"Fou Lei and Fou Ts'ong," written by Hu Weimin, dramatizes clash between personal and political life in contemporary China. This play was banned in China and unproduced until translated and staged by Sherwood Xuehua Hu, in New York last year. Performances by Kumu Kahua are at Tenney Theatre, St. Andrew's Cathedral, Queen Emma Square. For information call 737-4161.

Academy of Arts  
Films

**Swoon**, a shocking exploration of the lives of notorious thrillkillers Leopold and Loeb.

Showing at Jan. 15, 16 and 18 and at 4 p.m. Jan. 17.

**Barefoot Gen**, animation of a beautiful tale of Japanese family life that shifts into a series of nightmarish images surrounding the fateful day of Aug. 6, 1945, when the U.S. dropped the atomic bomb on Hiroshima.

Showing at 7:30 p.m. Jan. 21 - 23 and at 1 p.m. Jan. 21.

**Today's Avant-Garde Female Video Artist**. Film series showing Jan. 26 - 27 at 7:30 p.m.

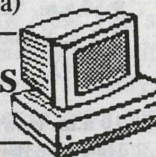
## Lectures



**Jewels-metals artist**, Anne Graham will discuss her craft in a slide lecture in the Academy of Arts Theatre at 2 p.m. on Jan. 17.

**Charles Bernstein**, poet will be reading on Jan. 18 in the St. Johns Auditorium at 7:30 p.m. and Jan. 19 in the Kuykendall 410 at 3:30 p.m. (UH-Manoa)

## Computers



**Computer Expo '93**, Hawaii's largest show for computers and communications, will be held Jan. 26 and 27 at the Blaisdell center from 11 a.m. to 7 p.m. Admission is \$3. Over 125 companies will exhibit the latest versions and releases in hardware, software, supplies and services. Manufacturers representatives will be present to answer questions and give demonstrations. All platforms will be represented and many vendors offer show specials.

For information on exhibiting or the InfoTech Seminar schedule, call Barry at 521-3162.

YOUR AD COULD GO  
HERE

Student prices for an ad in the Kapi'o are \$3 per column inch. Stop by at Lama 119 or 118.

## JOB PLACEMENT

For more information on these jobs and many others, contact the Job Placement Office at 'Ilima 103 or call 734-9514 for an appointment.

**Student Helper I:** A state office is looking for someone to perform general office and other related duties. Must be a full time student. Some typing skills are required and have arithmetical and verbal skills. Part time position. Pay rate \$5.75/hour. Job#2356

**Marketing Clerk:** A large diversified company is seeking an individual to perform clerical/administrative tasks for their marketing department. Duties include: Assisting in the development of spreadsheets; processing of billing; monitoring receivables; run errands and maintain advertising/promotional and distributor programs. Must be detail oriented, type 40 WPM, able to do 10 key by touch, have calculator skills, aptitude for math, word processing and spreadsheet, valid driver's license and able to pick up 50 pounds. Payrate \$1400+/month. Full time position. Job#2360

**AS400 Programmer:** A large retail store is seeking an individual to assist in the programming of their AS400. Must have knowledge of RPGII or RGP-400, CL. PC experience desirable and familiarity with Windows, MS Word, Excel and Pagemaker. Pay rate is negotiable. Full time position. Job#2364

**Accounting Clerk:** A downtown law firm is seeking someone to file, xerox and do data entry. Must be reliable, able to file correctly, responsible and have some computer experience. Pay rate \$7.00/hour. Part time position. Job#2365

## Classes



\* **Play It Again Sam...Plucking By Ear.** Anne Craig, KCC music instructor, will teach students the rudiments of how to play by ear. Prerequisite: one semester piano or instructor's consent. Class meets Mon. and Wed., Jan. 25 - April 12, 6 - 7 p.m. Olona 109.

\* **Eh Lucille, You Listening Or What?** Mary Jane Lewis, KCC Language and Arts instructor, will assist you in evaluating your own listening skills. Class meets on Wed., Jan. 20, 6 - 8 p.m. in Olona 201.

\* indicates a production or presentation sponsored by the Office of Community Services of Kapiolani Community College. For more information or to register for any events, call 734-9211.