

Kapio

Volume 22 No. 17

Kapiolani Community College

January 23, 1990



Photo By Ropati Hebenstreit

In spite of the rain, nursing students receive training on the proper procedure in putting out a fire. The first step they were taught by a member of the Honolulu Fire Department is to warn anyone in the building that there is a fire before attempting to douse the flames.

Campus growing pains call for money relief

By Ropati Hebenstreit

KCC is working on developing a budget request for the period from July 1, 1991 to June 30, 1993 that will go to the Legislature January of next year. The proposal has to go through several departments before it reaches the Legislature.

Along with this planning KCC is also trying to get an appropriation for expenses and emergencies that have arisen since the last budget was approved last year. The Legislature is considering a request for funds that the campus needs now to cover additional expenses, Provost John Morton said.

Requests in the supplemental budget include:

- More security for the campus. Morton explained that at the moment there are two security guards at KCC and that the number would be increased to four. "We feel with a campus this size that one person can not adequately patrol the campus," he said. Morton would also like to install more electronic alarm systems at the campus also.

- Funding for the student health center and for two professional staff to man it. "The idea is to provide health services for both day and evening students," Morton said. "That would give us something that we don't have now."

He further explained that the health service would also be the cornerstone for general health education programs that KCC may wish to make available to the students like Aids

education, substance abuse, contraceptive and high blood pressure information. "I see this as a wellness program that also happens to deal with emergency care," Morton said.

- Additional funding for salaries for the custodians. The Provost explained that the money to pay the custodians runs out in July.

- More funds for computer, air conditioning and elevator maintenance. The Provost said that KCC did not have as many computers or any elevators at the Pensacola campus.

The college is also taking a look at what it will need for the new budget, up before the Legislature January, 1991. The requests have to be ready by mid-March. Then the proposals will go through a process of review, first by the chancellors, then by the president, Regents, and finally by the Governor. If he approves the budget, he will submit it to the Legislature next January for final approval.

A request approved by the Regents but yet to be recommended by the Governor is state funding for the Physical Therapy program. KCC has been running the program the past couple years with Federal funds, but that will run out at the end of this year so KCC is looking for state funds to continue the program. Morton said there is a real need for physical therapists in the work force.

A need of the campus that is being studied is class size. "We think that some of the classes are too big for effective instruction, particularly some of the math and writing intensive courses," Morton said.

"The space issues, I think, for now are temporary; the fact is students coming to KCC want to be here and not Pensacola." "When we open up in the fall we will have built the interim facilities, and that will effectively move all the classes from Pensacola up here. I think you will see that we don't have a space problem. We were just not ready to have 90 percent of the students on this campus."

Another priority is the computer center and maintenance of the computers on campus. The computer center is now open 76 hours a week and more staffers are needed to help with the facility.

Construction timetable:

The Media center should be completed in a matter of weeks, said the Provost and once the classes are moved in then Buildings 923, 924 and 925 will be demolished. That space will be used as a temporary parking lot while the parking lot below 933 is enlarged to 100 stalls.

At the end of this semester, Kapio will move out of 923 and into Naio, the media center, until the new lab in the library is completed. The Emergency Medical Services will move into portables off 18th Avenue until their building is constructed.

Studio nixed

By Pat Beer

On Jan. 11, the Diamond Head neighborhood board decisively voted no on the state's plan to put an enlarged film studio on land adjacent to KCC and originally planned for further campus development.

The vote was 8-2 against expansion of the old Magnum P.I. film studio, but that does not put an end to the state effort to place the studio here, according to Mike Molloy, humanities chair, who was present at the meeting.

Dr. Molloy has formed the Film Studio Task Force to monitor the Legislature and contribute proposals for other sites for the film studio. The Task Force meets the first and third Wednesdays of the month in Iliahi 206 at noon. Interested persons are welcome.

Add-drop expanded

By Alissa Coleman

This semester, the add-drop period for continuing students was extended to four weeks prior to regular registration.

"This new add-drop period, I believe, had a significant impact. I have seen the lines longer," said Ralph Ohara, the Dean of Student Services at KCC.

Students may remember times when the lines stretched from the computer terminals, up the stairs and onto the sidewalk towards the cafeteria.

Ohara said that "A total of 5675 students have enrolled at KCC this semester. This is a new high which is 3.6% higher than last Spring."

He also believes that it is now relatively easy for students to register and that in reality there are a minimum of serious existing problems.

A computer breakdown in the middle of registration brought the waiting lines to a standstill so that the registration period had to be extended into the next day.

It was simply some kind of computer failure. We had computer technicians fix the problem and then the process continued to run as smoothly as before, he said.

The most frequently heard complaint, he says, has to do with the long waits and lack of available classes. Ohara said, about 2/3 to 3/4 of our students work and require classes that will fit into their work schedules, instead of the other way around.

Registration has always had its pitfalls, but Ohara stressed that over the last few years KCC has worked hard to create an efficient system.

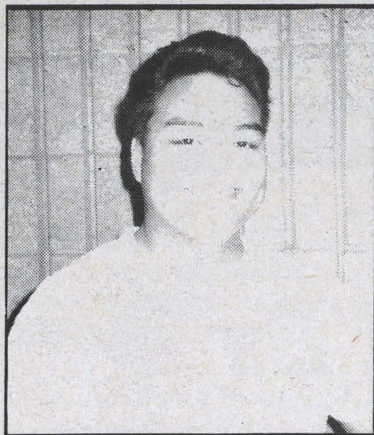
Many of the problems with registration are created by the students themselves. "There are certain things that students do that hurt other students," said Ohara. "Just today a student came into my office to register a day after the deadline to add-drop, saying that his teacher was allowing him into the class because five students had just dropped the class the previous day...five!...the day of the deadline..." he said.

In the future Ohara hopes to help make it easier on the workers at the registration terminals. He said that there is a new computer system in existence that allows a student to register by phone. "This may become available to us soon," he said.

Opinion Poll

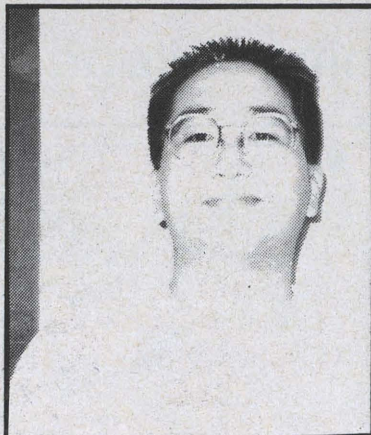
Question and Photos by Colette Honda

Do you consider Hawaii a melting pot? Have you ever been discriminated against?



Joel Lagud
Liberal Arts

"It's like a stew when you add things, and they take on some characteristics and they remain different somehow. I may have been discriminated against, but I just don't remember."



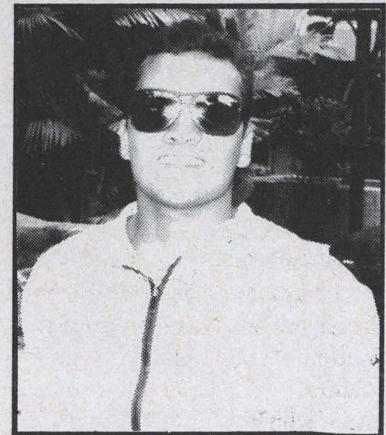
Kurt Mizushima
Accounting

"I would think so, yes, because of the intermarriage of the different nationalities and because of the increase in military families integrating in Hawaii. I don't feel I was singled out because of my nationality."



Linda Rubiano
Liberal Arts

"Yes, because of the different ethnic varieties everyone is here. I've been discriminated against because I'm Spanish. I've moved around a lot and they always said I was different."



Raj Chatterjee
TIM

"Yes, there's very different ethnic backgrounds here. I can't say I've been discriminated against, but I know it goes on."

Kapio would like your opinion. Call us at 734-9261 or drop a note in our mailbox at Bldg. 923. Please leave us your name and major.

SPRING 90 KAPIOLANI COMMUNITY COLLEGE CLUB LIST

Creative Writing Club

Advisor: Bill Reisner 734-9570
President: to be elected
Purpose: to develop writing skills, introduce members to authors, and provide information on publishing.

Business Club

Advisors: Kevin Dooley 734-9313
Ruth Karr 734-9328
President: Sid Nadoza
Purpose: to promote awareness and understanding of the business world.
Meets on the second Monday of each month.

Chinese Club

Advisor: Shu-Fen Fujitani 734-9377
President: Rick Wu
Purpose: to foster understanding and promote social interactions between Chinese students on campus.

Data Processing Club

Advisors: Sandra Lai 734-9334
Carolyn Prough 734-9321
President: to be elected
Purpose: to encourage and aid members toward a career in Data Processing, expose members to latest developments, and to develop relationships between Data Processing and the industry.

Hui Ho Aloha

Advisor: Don Fujimoto 734-9577
President: Kurt Murashige
Purpose: to promote the spirit of Aloha, friendship through fun, service and learning activities to develop citizenship. Also to foster individual growth and respect for the rights and dignity of the individual and the group.

Japanese Culture Club

Advisor: Thomas Kondo 734-9377
President: D. James Berry
Purpose: to foster and promote Japanese language and culture.
Fee: \$5

Korean Culture Club

Advisor: Kyong Soo Chung 734-9329
President: Kab Yun Wun
Purpose: to promote mutual friendship among Korean students.
Fee: \$10

Pacific-Asian Student Association

Advisor: Robin Fujikawa 734-9376
President: to be elected
Purpose: to encourage cultural awareness and sensitivity, and to engage in social activities.

KCC Bowling Club

Advisor: Linda Kodama 734-9333
President: to be elected
Purpose: to increase interest and participation in bowling and provide an opportunity to meet new people.

KCC Soccer Club

Advisor: Charles Daniels 734-9262
President: Ralph Mintz
Purpose: to promote friendly competition and learn sportsmanship.
Uniform Fee: \$18

Fil-Am Club

Advisors: Nelda Quensell 734-9264
Randy Francisco 734-9211
Maria Bautista 734-9433
Purpose: to promote friendship among members, develop civic consciousness, and develop Filipino culture.

Hawaiian Club

Advisor: Esther Mookini 734-9230
President: to be elected
Purpose: to promote Hawaiian heritage.
Fee: \$1
Meets once a month

"ATTENTION"
GOVERNMENT SEIZED VEHICLES
FROM \$100
Fords, Mercedes, Corvettes, Chevys
Surplus Buyers Guide
1-602-838-8885 EXT. A 8909

Phi Theta Kappa

Advisor: Louise Yamamoto 734-9450
President: Cheryl Belcher
Purpose: to recognize and encourage scholarship among community Junior college students. Also to develop leadership, and exchange ideas in stimulation of interest in continuing academic excellence.

The Secretarial Club

Advisor: Joyce Nakamura 734-9611
President: Suzanne Bactad

"ATTENTION" - GOVERNMENT HOMES
from \$1 (U-repair).
Delinquent tax property. Repossessions.
Call 1-602-838-8885 Ext. GH 8909

Kapio

4303 Diamond Head Rd.
Honolulu, Hawaii 96816
Ph: 734-9361

Kapio is published every Tuesday by the Board of Student Publications of Kapiolani Community College. It is funded by student fees and advertising and reflects the views of its editors and writers who are solely responsible for its content. Circulation is 2000.

Kapio welcomes contributions to the paper. Editors reserve the right to edit all submissions for length, grammar and libel. Publication is not guaranteed.

Editor-in-Chief.....Ropati Hebenstreit
Asst. Editor.....Alissa Coleman
Page Editors.....Darryl Chinen,
Lynn Freeman, Pat Beer,
Cheri-ann Shiroma
Photo Editor.....Colette Honda
Graphics.....Reuben Young
Darkroom Tech.....Clem Montero
Typist.....Jaimie Nobriga
Advisor.....Wini Au

Club Week to open Spring term

Student Activities is holding Club Week, and invites all clubs on campus to participate in the festivities. This is your club's chance to recruit new members and re-establish returning members. Club displays will be set up in the Ohia cafeteria on Jan. 29 through Feb. 2. For any questions or comments, call 734-9576.

Cashier/Registration Person for help on promotion project. Various sites throughout Oahu \$6-10 per hour. Thursday and Friday 9-1 p.m. and 4-8 p.m., and Saturday 9-1 and 2-6 p.m. Healthy appearance and caring attitude a must. Reliable transportation required. Leave message for Kris at 623-5311.

Toshiko Takaazu glaze of the World

By Ropati Hebenstreit

Toshiko Takaazu showed slides and a short movie on various aspects of her work to a group of art students in the Koa Building before her opening reception at the Koa gallery last week.

Her work captured the essence of a sunset with its pinks and violets, the color of a brooding storm that's been chased away by blue sky, or the harmony of the land meeting the sea. The shapes she created from clay seem to rise up out of the ground, as if Nature had created them.

Her trip to Machu Picchu, in Peru and the Andes had a big influence on her work, she said, "with the snow capped mountains and the dirty rivers." Since then the image of the snow has influenced her work and she uses a lot of white in her glazing.

"What you have to do is consume and digest what you've enjoyed. Then, I think it will come through in your work," she said.

Takaazu said she's interested in using all colors on her work and glazes her ceramic plates, or tiles, as if she were painting on a canvas. She experiments with a wide variety of oxides: copper, cobalt, magnesia and ash from different types of wood, and said even the rust from a coffee can, that she kept a glaze in, added flavor to the color.

"It could be very scientific," she said, referring to making the glazes but Takaazu said she uses her experience instead to achieve a particular effect.

Takaazu was born and raised on the Big Island and attended the Honolulu Academy of Arts and the University of Hawaii. She completed her studies at the Cranbrook Academy of art in Michigan, where she later taught. Presently, she is a professor of art at Princeton.

Originally she was trying to get into sculpture but later changed her mind.

"I thought with clay you don't have to be really serious. You can be a little frivolous."

Her art is far from light-headed in capturing the imagination of an observer, who might look down at one of her ceramic spears and imagine that he was viewing a planet from space.

Her work is also displayed at the Department of Health, two blocks from KCC's campus on Kilauea Avenue. The ceramic sculpture there is egg shaped and called "Ka-hua," meaning beginning of life. Takaazu's work is also represented in many public collections, such as the Smithsonian Institution in Washington, D. C. Her work has been exhibited extensively throughout the United States, including the Cleveland Institute of Art in 1960 and 1980, the Society of Arts in Boston in 1965, the Honolulu Academy of Arts in 1973, the New Jersey Museum in 1979 and the Tampa Museum of Art in 1988. In 1987, Takaazu was designated as one of the living treasures of Hawaii for her achievement as an artist and educator.



Photo by Ropati Hebenstreit
Toshiko Takaazu shows one of her creations. She uses different types of oxides to get the color she wants for her piece.

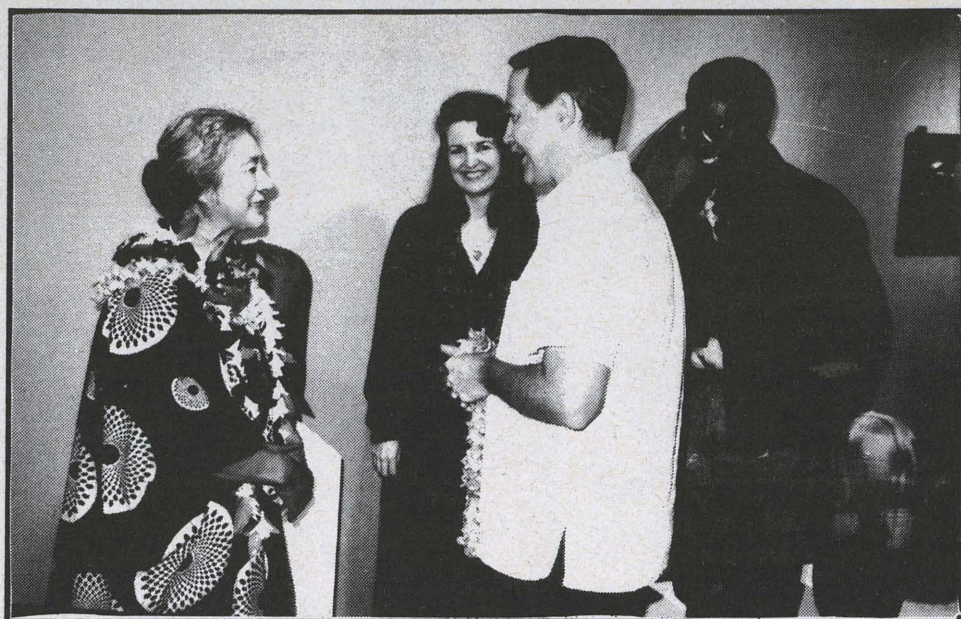


Photo by Ropati Hebenstreit
John Morton, Provost thanks Toshiko Takaazu for her beautiful ceramic art pieces which are displayed at the Koa Art Gallery. Noreen Naughton, art instructor, and Leon Richards, Dean of Instruction, also welcome the artist.

Morbid Morals from Siffre

By Leena

For an interesting change of pace, you might want to pick up Labi Siffre's "So Strong." Siffre's vocals are strong as are his song writing abilities.

"Son Strong" is basically a soul album with slight jazz overtones. The album carries a melancholy beat throughout its entirety. Our definition of melancholy is neither slow or fast. It's sort of in between, as one might say. Just imagine Harry Belafonte with Quincy Jones and/or Al Jarreau producing.

The album was actually produced by

David Kershenbaum, Christopher Neil, and Glyn Johns. Michael Wells, Bob Marlette, and Darren D'Lavance Sullivan co-produced the album.

Through his songs, Siffre addresses such problems as the homeless, the destruction of nature, and also violence. "Choruses of old folk scared to open the door/ Living in the shadows/ Dying in the cold/ Inner city jungle ain't no place to grow old." To balance his tales of morbid morales, Siffre also wrote a few uplifting love songs.

The question of how well he pulls it off is up to you to decide. "So Strong" is already available at record stores.

Beat happenings

KENNEDY THEATRE

The Jade Hall of Spring, showcase production of Kennedy Theatre's China Vision season, opens Feb. 9th with the world premier of the English version of the classical Beijing Opera, Yu Tangchun.

Yu Tangchun is a romantic comedy. Tickets for The Jade Hall of Spring go on sale January 29; prices are \$9 adults, and \$6 students, seniors, and military. Tickets can be purchased in person or by phone at the Kennedy Theatre Box Office from 10 a.m. to 6 p.m. Monday through Friday, and 10 a.m. to 2 p.m. Saturday.

ACADEMY OF ARTS

Open free of charge Tuesday-Saturday 10-4:30 p.m. and Sunday 1-5 p.m.

For information phone 538-1006.

Northern Baroque Painting Masters

Beginning Jan. 28 and continuing every Sunday for six weeks, the Honolulu Academy of Arts and the University of Hawaii will combine forces to produce a Spring lecture series, "The Light of Tradition: Northern Baroque Painting." Each slide presentation will take place at 2 p.m. in the Academy Theatre. Series tickets are available for \$18 for members, \$15 for students, or individual lecture tickets may be pur-

chased at \$4 per lecture. Lectures will discuss such masters as Rubens, Vermeer, Bosch and Rembrandt. The lecture highlights major paintings by 16th and 17th-century Dutch, Flemish and German masters, and also includes reference to works in the collection by lesser-known Northern artists such as Quentin Massys and Jan Steen.

Academy Art Center at Linekona

Bring your family and friends and join the Honolulu Academy of Arts in celebrating the opening of the Academy Art Center at Linekona School Sunday, Feb. 4 from 3-5:30 p.m.

Following a short dedication program and greetings from various dignitaries, enjoy music by the McKinley High School Band, the Kapakahi Jud Band, classroom demonstrations and participation events, and exhibits including photographs of students, classes and activities at Linekona School during the 1920s, 1930s, and 1940s. Also on view will be a retrospective exhibition of work done by Art Center students from 1931 through 1982.

This is also the public's first opportunity to inspect the handsomely restored historic building, the former Linekona (Lincoln) School, which now will be used for art classes for children and adults. All are welcome.

Admission is free.

Black History Month

On Saturday, Feb. 3 at 7:30 p.m., three unusual films from the British film collective Sankofa Film and Video will be presented at the Academy Theatre in celebration of Black History Month. The collection was founded in 1983 with the aim to produce "a range of images of the black subject which is geographically, culturally, economically, racially and sexually diverse and...to explore the differing relations around black experiences outside the realms of the Exotic, the Victim, and the Threat."

Tickets are \$3 and are available at the Academy box office or at the theatre entrance a half hour before showtime. A brief description of the films follows:

"Looking for Langston" (Great Britain, 1988, directed by Isaac Julien) is a poetic and erotic meditation on black and white gay identities based on the work and lifestyle of the great black American poet Langston Hughes during the Harlem Renaissance of the thirties and forties.

"Perfect Image?" (Great Britain, 1988, directed by Maureen Blackwood) is a fast, furious and funny depiction of two actresses who constantly change persona in the search of the perfect image.

"Dreaming Rivers" (Great Britain, 1988, directed by Martina Attile) is a beautifully photographed, nostalgic film about modern families separated by migration.

HEMENWAY THEATRE

Admission is \$2 for UH students w/ID and \$3 for the general public. Weekday matinees at 3 p.m. For more information call 948-6468.

"Sex, Lies, and Videotape" (US, 1989) is a story about how a friend's fetish affects a relationship with his wife and everything around him.

"School Daze" (US, 1988, directed by Spike Lee) is a thought-provoking opus about how a black college deals with the differences between light and dark-skinned blacks.

The Great Aloha Fun Run/Walk will be held on Presidents' Day, Monday, Feb. 19 and starts at 6:45 a.m. from Aloha Tower to Aloha Stadium. The deadline was Jan. 22 but you can still register between Jan. 23 and Feb. 2 so there is still time. But there will be a late fee of \$20. For more information call 735-6092 or 235-0773. So come out and help support some great organizations while keeping in shape. See ya there!

Tuesday, Jan. 23

Last day of 80% tuition refund period.
Hemmingway Theatre presents :
"Sex, lies and Videotape," Jan. 23-27. 8 p.m. General admission \$3, Students \$2.
"Nobody Listens," 7:30 p.m. \$3.

Wednesday, Jan. 24

40% Tuition refund period begins
0% Tuition Refund After February 6th, 1990.
Last day for textbook refunds
Academy Theatre presents:
"The Entertainer," Jan 24-28
7:30 p.m. \$3.

Thursday, Jan. 25

Friday, Jan. 26

Velina Houston's: Tea. 8 p.m.
The Lanai Cafeteria, behind Mckinley High School. Jan 26-27.
Shimomoseki College students visit KCC

Saturday, Jan. 27

Academy of Arts presents: "War Requiem"
Jan. 26-29. 7:30 p.m.

Sunday, Jan. 28

Hemmingway Theatre presents:
"School Daze," 6 p.m. & 8:20 p.m.

Monday, Jan. 29

"Hawaiian Registration," presented by the office of Hawaiian Affairs.
12 p.m. Ilima 202C.

Tuesday, Jan. 30

Academy of Arts presents: "Leatrice"
7:30 p.m. General Admission \$3.

Infoline

JOB PLACEMENT

Clerical Helper

Earn \$7.64 an hour doing filing and typing at this Kalihi Elementary School. Hours up to 20 per week, somewhat flexible. Must be able to work during spring and summer breaks. Like kids and able to handle a busy office. Ask for Job # 544.

Phone operator

Have a pleasant voice and good telephone skills? Part time job at well known Waikiki hotel is available now. Flexible hours. Pay is \$7.24. Ask for job #539.

Secretary

If you can type 50 wpm and know WordPerfect, this job is ideal for you! Pay is \$5-6/hour and work schedule is flexible, 4 hours per day. Real estate company needs someone now! Ask for Job #538.

Person Friday

Law firm wants someone to file, do phones, walking errands with lots of people contact. pay is \$5.25/hour and hours are flexible on Monday, Wednesday and Friday. Ask for Job #523.

Cruise Ship Deckhand

If you have good people skills and good speaking skills, this opportunity may be just for you. Work 30 hours per week aboard a cruise ship doing narrations, assisting passengers, and clean up. Pay is \$5.25 per hour. Ask for Job #517.

Stop by the Job Placement Office in Ilima 103 or call 734-9514 to make an appointment. Job Placemnet assistants will give you information on these jobs as well as many others presently advertised.

OFFICE OF COMMUNITY SERVICES

The Office of Community Services in offering various non-credit courses in Fine Arts, Chinese Fine Arts, Ceraminc, Paper Arts, Photography, and Potpourri. Most classes start in early Febuary, tuition required and early registration is advised. For more information call the Office of Community Services at 734-9211 or stop by 933-101.

KOREAN CULTURE CLUB

Following the meeting on Jan. 29, 12 noon in Iliahi 206, the club is planning to voluntarily clean up the KCC campus. All club members please join us!

WEIGHT MANAGEMENT

The Nuuanu YMCA is offering classes on weight management. The program focuses on the three major factors affecting weight and health. The first session of the program begins on Jan. 30 and runs on Tuesday and Thursday evenings from 5:30 to 7:15 p.m. and is divided into exercise and lecture segments. Cost is \$100 for non-members, which includes \$5 for YMCA dues and \$50 for members. A \$15 payment must be made at the time of registration. For more information, please call Nuuanu YMCA, at 536-3556.

CHILD AND DEPENDENT CARE TAX CREDIT

Parents and guardians planning to take the Child and Dependent Care Tax Credit must put their baby-sitter's social security number on their 1989 federal tax returns to claim credit. The IRS may disallow the credit if the number is not on the return. Taxpayers can ask their care providers to complete IRS Form W-10, the Dependent Care Provider's Identification form, to get the information needed to go on the tax return. W-10's can be obtained by calling 1-800-424-3676. All care providers, except tax exempt organizations, are required to provide the information or face a \$50 fine.

More information on the new requirements can be found in IRS publication 503, "Child and Dependent Care Credit." It also can be ordered free by calling 1-800-424-3676.

BUSINESS CLUB

Are you a first-time college freshman, interested in business, looking for new people to meet and socialize with? Are you looking for a club around campus that is both rewarding and fun? KCC has a club just for you.

The Business Club is a gathering of people bonded together for one purpose, and that is to interact more with business contacts and to gain knowledge of the business world. The club is not all work and no play, there are also social functions throughout the semester. For example, the first social event planned for the semester is a volleyball/picnic ice-breaker with the Data Processing Club.

If this sounds pretty good, why not give the Business Club a chance. For more information grab a brochure at the bookstore or Business Education Office.

HAWAII COALITION ON GLOBAL AFFAIRS

Hawaii Coalition on Global Affairs announces, "Probing for Conflict Resolution in the Middle East," on Feb. 3 at 9:30 a.m. in Ohia 118. Lectures, small group discussions, and workshops throughout the day. Lunch \$6 and registration \$4. Registration deadline is Jan. 25. For more information call 948-7427.

HAWAII BICYCLING LEAGUE

Country Touring

It's time for another self-supported ride with Jim Arcate. Ride out to Kailua Beach Park for a lunch stop and a quick dip in the ocean. Carry your own beverages and food; this group does not stop at 7-11's. Slower riders welcome. Meet Saturday, Jan. 27, 8 a.m. at Kapiolani Park.

St. Louis Heights

Meet in front of Moose McGillycuddy's on University Avenue, Saturday, Jan. 28 at 7:30 a.m. We'll ride around Diamond Head before heading up the Heights. Rest stop at Waahila Ridge State Rec Area.

Make sure you got super low gears...mountain bikes work really well. And make a thorough check of your brakes...they have a habit of showing any weaknesses on steep asphalt downhill.

The Hawaii Bicycling League invites all interested riders on these rides. There is no charge to participate in any of the rides. Riders should wear a helmet and be sure to bring a water bottle.

Interested persons may call the HBL hotline (988-7175) for more information.

HUGS

Share laughter, hope and a little of your time with a child or their family facing catastrophic or life threatening illnesses. Become a volunteer at HUGS (formerly the Young People's Support Center). There is a training session coming up Jan. 27th. For more information call HUGS at 531-7367. Your time is a precious gift in the lives of these children.

KCC'S INTERPRET HAWAII PROGRAM

KCC's Interpret Hawaii program presents a walking tour through, "The Magic of Waikiki" on every Tuesday during the month of February from 9-11 a.m. starting at the

Natatorium.

The tour costs \$5/Adults, \$2/Children and \$4/Students and Senior Citizens (Hawaii residents, 60 years or older). Pre-registration and advance payment are required. Space is limited on each tour to 20 people so act now to reserve space!

For more information call the Office of Community Services at 734-9211.

HEALTH CAREER OPPORTUNITY

Are you interested in becoming an Emergency Medical Technician, but can't take time out during the workday?

Emergency Medical Services is offering classes to fit your work schedule between April 3 and August 15.

EMT 100: (4/3 - 6/5): T/TH from 6-10 p.m. and Sat. from 9a.m. - 5 p.m.

EMT 101: (6/15 - 8/15): Fridays, Saturdays, and Sundays or by arrangement.

The cost is \$207.50 for tuition (resident); insurance, \$80; plus books, uniforms, State and National exams.

The prerequisites are: CPR certification (AHA - Level C or Red Cross Equiv.); first aid or equivalent health care experience; and minimum entrance requirements for college.

Those applicants who already have college degrees will be evaluated on an individual basis to determine if entrance exams will be required. A & P and Medical Terminology classes recommended.

Deadlines are Kapiolani Community College Application, Feb. 1; for Ems Departmental EMT Application, Feb. 15; and interviews are March 5 and 6.

For further information contact KCC EMS Department at 734-9330.

PHOTOGRAPHY CONTEST

Students interested in capturing all aspects of campus life in print and who have access to a camera are encouraged to submit their work to Angela Meixell in Ilima 206 before Feb. 15. Winning photo entries will be use in the General Catalog and other school publications for 1990. Prizes will be announced. Create something you can be proud of. Give it a shot!

EARN 32,000/YR INCOME POTENTIAL!
MONEY READING BOOKS!
FOR DETAILS:
(1)(602)838-8885
Ext. Bk8909