

MEET THE PEOPLE

Maui's loss will be the gain of St. Stephen's church in Texas, when the Rev. E. P. Barry, of the Good Shepherd Episcopal church in Waipahoehoe, departs from the Valley Island with his family on Monday. Rev. Barry will conduct his last service at the Good Shepherd on Sunday. He has been rector of the Good Shepherd for the past eight years.

MAUI NEWS

Published Twice Weekly: Wednesday and Saturday Entered as Second Class Matter at the Post Office at Wailuku, Hawaii, U.S.A.

Wailuku, Maui, Territory of Hawaii SATURDAY, DECEMBER 26, 1953 Price 10 Cents

Published And Circulated On December 24, 1953

The TOWN CRIER Says

"The spirit of the Yuletide is rampant. . . On one page of a Honolulu paper we read 'FLEECERS GET \$3,000 FROM WAIKIKI HOUSEWIFE' . . . BARE-FOOT THUG SLUGS AND ROBS HOUSEWIFE OF \$15 . . . HONOLULU CHARGED WITH PARK ROBBERY . . . Yes, indeed . . . Peace on earth . . . good will toward man!"

MR. OLIVE BRAUE RITES MR. BURNETT LOVE RITES

Late Sports Bears Win 56-53 Over Roosevelt

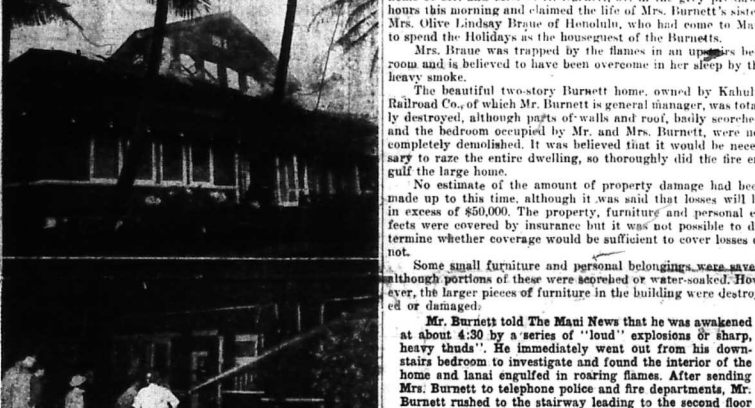
Captain George Bartolome tallied 27 points to pace Baldwin high school's Bears to a 56-53 win over the Roosevelt Rough Riders and substitute center Tom Cummings scored the winning basket in the last minute of play to give Lahainalua a 40-39 victory over Kapaa high school in games played last Wednesday night at the Wailuku and Laha gyms.

61 County Boy Scouts To Hickam

Early Saturday morning at 6:30, a total of 61 Maui County Council explorer scouts and five explorer advisors will be winging their way by MATS to Hickam Field for the semi-annual explorer training and encampment.

Burnetts Escape Flames In Pre-Dawn Blaze While Kahului Home Is Razed!

TRAGEDY AT KAHULUI



KAHULUI, Thursday, December 24 (8 a.m.)—A raging fire of undetermined origin swept through the spacious Kahului home of Mr. and Mrs. C. H. Burnett, Jr. in the grey pre-dawn hours this morning and claimed the life of Mrs. Burnett's sister, Mrs. Olive Lindsay Braue of Honolulu, who had come to Maui to spend the holidays as the houseguest of the Burnetts.

Braue Rites Wait Word From Coast

Kahului Blaze Victim Was Faculty Member At McKinley High Announcement of plans for funeral services for Mrs. Olive Lindsay Braue will be announced after further word has been received from her daughter, Mrs. P. S. McInturf, of 229 East Florida Ave., Hanford, California, and from her sister, Mrs. Homer Klopch, who with Mr. Ralph, is a guest at the St. Francis Hotel in San Francisco.

Rizal Day Celebration At Lahaina

Karl Berg to Speak At Chronological Rites Sunday Rizal students of West Maui will celebrate their national holiday—Rizal Day—on December 30, with an elaborate three-day program at Kiawe Village which has been the center of the celebration in former years.

Kahului Union Education Unit To Be Dedicated On Sunday Morning

With the Glory of God and the Service of Mankind, members and friends of Kahului Union Church will dedicate their beautiful new education unit at Kamehameha and Lono avenues in New Kahului this Sunday morning.

Large Freighter Pays Visit To Kahului Harbor

The largest freighter ever to enter Kahului Harbor tied up at Pier 1 about 4 p.m. Tuesday on an 8-day direct voyage from Sasebo, Japan. It was the Badger Mariner, on her maiden voyage under the command of Captain Ben Shaw.

Work Starts In January On New Molokai Highway

Territorial Contractors, Ltd., will begin work on the three-mile Farfington Avenue, Molokai project in January, according to Erwin F. Morrison, Territorial highway engineer for Maui County.

Mine In Lahaina Is Target Of Disposal Team

A mine disposal team of Navy personnel from Oahu arrived on Maui early morning here which claimed the life of Mrs. Olive Lindsay Braue, showing the second story location of the bedroom occupied by Mrs. Braue, with only the side walls left standing.

Social Security Tax Rates Go Up With Start Of The New Year

The social security tax rate for persons whose work counts toward old-age and survivors insurance is scheduled to increase on the first of January, 1954, Stanley McKenney, district director of Internal Revenue, and Marshall Wise, manager of the Honolulu social security office, are reminding employers, employees, and self-employed people.

Hadano Is Low Bidder, Haiku School Project

Richard R. Hadano of Honolulu submitted the low lump sum bid of \$214,000 for the construction of new buildings and apartments for Haiku School when bids were officially opened Tuesday afternoon at a special meeting of the board of supervisors.

'Voices And Events' Show On KMVI Sunday

Radio Station KMVI will air one of the National Broadcasting Company's outstanding year-end reviews on Sunday when "Voices and Events, 1953" is broadcast.

ON THE INSIDE

Table with 2 columns: Category and Page Number. Includes Churches (8), Comics (10), Domestic Animals (12), Editorials (12), Fish and Shell (12), KVMR Program Schedule (11), Listen Americans (12), Maui Scene (12), News of Yesterday (12), People's Forum (12), Sports (4 and 5), Things & People (7), U.S. Post (12), Country Life (9).

Education

(Continued from Page 1)
wation singing organization, the All-Maui Chorus, will minister in music at the singing of two anthems: "O Hehena Koa Kahakaha," and "Himeloi Holoa."

Supervisors To Get \$20 Day On Business Trips

Effective December 21, members of the board of supervisors traveling to any other island or official County business will be allowed \$10 per day for meals and all other incidental expenses, or \$20 a day for meals, lodging and all other incidental expenses.

Ernest Robello to Oahu for Holidays

Mr. and Mrs. Ernest Robello and son Ernest Lester will visit an Orthodox friend, Theobald Heights late for Honolulu early Thursday afternoon where they will spend the holidays with her husband and brother-in-law, Mr. and Mrs. Bob Soares of Koko Head avenue.

January 14 Is Tentative Date For CAB Meet

Shirley C. Kennedy, president of Hawaiian Airlines, said Friday that he had been advised that the Civil Aeronautics Board has decided to consolidate the pending rate cases of Hawaiian Airlines and Trans-Pacific Airlines and that the pre-hearing conference is tentatively set for January 14.

Four Members Of Punahou Team Arriving Sunday

Four members of the Punahou varsity basketball team which will play Maui next week will accompany Chaplain and Mrs. Kenneth C. Rewick who are arriving Sunday to attend local church services. The players include Alvin Harrington, Charles Henderson, Harry Pacarro, and Whit Newton.

New Sentencing Date

Judge William B. Brown has postponed the sentencing of William K. Harris of Holoehau, Molokai, in the Second Circuit Court from Wednesday, December 23, to Monday, December 28, at 10 a.m. Harris was found guilty of carnal abuse by jury trial.

Nine Auto Accidents Noted Here

Automotive accidents continue to mar the Maui County holiday scene, according to a police report. On December 19, a sedan operated by Charles T. Cr. Inc. suffered \$75 in damages when, in making a right turn into Kaula Street from Lani Street, New K. car veered right with a Blue and A. F. Smith bus operated by Robert T. F. Smith. The bus suffered \$25 in damages.

RITES HELD—Funeral services were held Wednesday, at St. Anthony church, for Ernest K. Ah Sam (above), of Wailuku, who died in Honolulu on Monday. Mr. Ah Sam was 50 years old and one of Maui's leading electricians.

Molokaian Give 209 Pints Blood

KAUNAKAKAI, Molokai, Dec. 23—Unofficial results of the blood bank drive held December 17, 18, and 19, reveal that 209 pints of blood were given by the 214 donors registered. The goal was 275.

Voices

(Continued from Page 1)
Mary Martin, Ethel Meriman and other top Broadway stars. "Voices and events, 1953" will be sponsored by NBC commentator, Morgan Bennett.

December 31 Is Bonus Deadline For Three States

The Council on Veterans Affairs wants servicemen and veterans from the states of Oregon, Minnesota, Montana and Pennsylvania that the deadline for applying for the World War II bonus is December 31 of this year.

Public Hearing Jan. 18

January 18 at 11 a.m. was set by the board of supervisors for public hearing required on certain roads at Heaheua which Robert P. Bruce, manager of East Maui Irrigation Co., Ltd., has requested the County to abandon.

Hearing Postponed

The liquor violation hearing of Eddie Morita's Harbor Lites Bar, Kaunakakai, originally set for Tuesday, has been reset by the

Molokai Blood Bank Aided By Maunahui Camp

KAUNAKAKAI, Molokai, Dec. 23—Molokai really needed help, they certainly did get it and 100% from the boys under Pat Murphy, superintendent in charge of the Maunahui Camp.

MAUI THEATRICAL ENTERPRISES THEATERS

Wailuku
SAT. Dec. 26. 7:00
MONTGOMERY CLIFT in "THE BIG LIFT"
9:45 P.M. SHOW
ANTHONY DEXTER in "VALERIANO TOGO"

Molokai Blood Bank Aided By Maunahui Camp

KAUNAKAKAI, Molokai, Dec. 23—Molokai really needed help, they certainly did get it and 100% from the boys under Pat Murphy, superintendent in charge of the Maunahui Camp.

MAUI AMUSEMENT COMPANY

IAO THEATER
Phone 5218
SAT. Dec. 26. 9:30
KIWANIS KIDS' CLUB
"STAGE TO BLUE RIVER"

Surprise Bridal Shower Held For Miss Matsumoto

A surprise miscellaneous bridal shower was held last Friday noon at the HCSA Company's main office rest room for Stella Matsumoto-Joked, by Medames Anne Y. Flocelle Sumbat and Misses Miyo Sugitama and Evelyn Kawachi.

FONG'S THEATRE

SAT. Dec. 26. 7:15
"LUXURY"
MON. Dec. 27. 7:15
"DALLAS"
TUES. Dec. 28. 7:15
"OFF LIMITS"
WED. Dec. 29. 7:15
"RAIN STREET TO BROADWAY"

Waikoa Theatre

Phone Kula 8218
SAT. Dec. 26. 7:15
"DALLAS"
MON. Dec. 27. 7:15
"THE JUGGLER"
WED. Dec. 29. 7:15
"OFF LIMITS"

Princess Theater

Lower Pals
SAT. Dec. 26. 7:00
"BITTY HUTTON IN 'AMNIE GET YOUR GUN'
"Captain Marvel"-No. 9
SUN. Dec. 27. 3:00-7:15
"KANSAS RAIDERS"
"BOWERY BATTALION"
"Capt. Marvel"-No. 10
MON. Dec. 28. 7:00
"KATAOKA CHIZHO IN 'DAI BOSATSU TOGO' (Part No. 3)
TUES. Dec. 29. 7:15
"ELEANOR PARKER and ANTHONY DEXTER in 'VALERIANO TOGO' (Part No. 3)
"SON OF THE SHEIK"

Queen Theater

Lahaina
SAT. Dec. 26. 7:15
"SORROWFUL JONES"
"PYGMY ISLAND"-No. 9
"Return Capt. Marvel"-No. 9
SUN. Dec. 27. 3:00-7:15
"THE BIG LIFT"-No. 9
Shores and New
JAPANESE SHOW AT 3:30
SADA KEIJI in "TABUJI"
MON. Dec. 28. 7:15
"KANSAS RAIDERS"
"BOWERY BATTALION"
"Return Capt. Marvel"-No. 10
TUES. Dec. 29. 7:15
"KANSAS RAIDERS"
"BOWERY BATTALION"
"Return Capt. Marvel"-No. 10
"DAI BOSATSU TOGO" (Part No. 3)

MAUI THEATRICAL ENTERPRISES THEATERS

Wailuku
SAT. Dec. 26. 7:00
MONTGOMERY CLIFT in "THE BIG LIFT"
9:45 P.M. SHOW
ANTHONY DEXTER in "VALERIANO TOGO"

MAUI AMUSEMENT COMPANY

IAO THEATER
Phone 5218
SAT. Dec. 26. 9:30
KIWANIS KIDS' CLUB
"STAGE TO BLUE RIVER"

Hadano Is Low

(Continued from Page 1)
December 18, Oshida attorney Hiroshi Depo reported that an agreement had been reached with the Hawaiian Commercial & Sugar Company, Ltd. to grant access to the land to be used for the Hall school until such time as the land is in a position to purchase the land. The attorney was enthusiastic to draw up the necessary deed.

FONG'S THEATRE

SAT. Dec. 26. 7:15
"LUXURY"
MON. Dec. 27. 7:15
"DALLAS"
TUES. Dec. 28. 7:15
"OFF LIMITS"
WED. Dec. 29. 7:15
"RAIN STREET TO BROADWAY"

Waikoa Theatre

Phone Kula 8218
SAT. Dec. 26. 7:15
"DALLAS"
MON. Dec. 27. 7:15
"THE JUGGLER"
WED. Dec. 29. 7:15
"OFF LIMITS"

Princess Theater

Lower Pals
SAT. Dec. 26. 7:00
"BITTY HUTTON IN 'AMNIE GET YOUR GUN'
"Captain Marvel"-No. 9
SUN. Dec. 27. 3:00-7:15
"KANSAS RAIDERS"
"BOWERY BATTALION"
"Capt. Marvel"-No. 10
MON. Dec. 28. 7:00
"KATAOKA CHIZHO IN 'DAI BOSATSU TOGO' (Part No. 3)
TUES. Dec. 29. 7:15
"ELEANOR PARKER and ANTHONY DEXTER in 'VALERIANO TOGO' (Part No. 3)
"SON OF THE SHEIK"

Queen Theater

Lahaina
SAT. Dec. 26. 7:15
"SORROWFUL JONES"
"PYGMY ISLAND"-No. 9
"Return Capt. Marvel"-No. 9
SUN. Dec. 27. 3:00-7:15
"THE BIG LIFT"-No. 9
Shores and New
JAPANESE SHOW AT 3:30
SADA KEIJI in "TABUJI"
MON. Dec. 28. 7:15
"KANSAS RAIDERS"
"BOWERY BATTALION"
"Return Capt. Marvel"-No. 10
TUES. Dec. 29. 7:15
"KANSAS RAIDERS"
"BOWERY BATTALION"
"Return Capt. Marvel"-No. 10
"DAI BOSATSU TOGO" (Part No. 3)

NEW YEAR'S EVE

Successories!

Costume Jewelry

From 49c to 10.00

- Bracelets • Chokers
Necklaces • Earrings
Brooches • Lapel Pins

Come in today and see our wonderful assortment of Hawaiian designs, simulated pearl, gold and silver setting with exquisite rhinestones. They look fabulously expensive.

Evening Slippers

A very high quality caftan with gold-threaded elastic trim. Just the right thing to give that final touch to your New Year's dress wardrobe. Sizes: Small, Medium, Large, in Gray, Turquoise, Black, and Rose.

dress shirts

These are just about the finest shirt buy we know of. Sanforized, washable, in all sizes.

250 PAIA • KAHULUI



SEND GREETINGS THROUGHOUT THE YEAR!

This is the week when many of you call your friends on the neighbor islands to wish them a Merry Christmas. Actually, interisland calling has become so reasonable with our new station-to-station rates (up to 55c cheaper, depending on when you call) that you could call more often during the coming year.

INTERISLAND TELEPHONE SERVICE CHARGES FOR A 3 MINUTE CALL*

Table with columns: Station-to-Station, Person-to-Person, Day, Overnight, Night, Sun. & Holiday, Overtime. Rates range from \$1.75 to 40c.

MUTUAL TELEPHONE COMPANY Communication Services To The Territory

EVENING PURSES

Here's a beautifully embroidered gold evening purse that will be the envy of everyone at the party. Her black and satin lining with matching compact and comb.

HICKOK Cuff Links & Shirt Studs

For your man's formal attire, nothing is so correct as a Hickok Maroon, or Blue matching set of cuff links and studs.

HOLLYWOOD VOGUE FORMAL BOW TIE, HANDKERCHIEF AND BOUTONNIERE SETS (Maroon or Blue)

250 PAIA • KAHULUI

Camp Maluhia Schedule To Be Drawn Tuesday

Camp Maluhia's schedule for 1964 will be drawn up at the Boy Scout Council office, on Tuesday, December 23. Notices have been sent out to those interested organizations. Seventh Day Adventist Church, Church of Jesus Christ of Latter-day Saints, Kahului Baptist Church, Maui Council Girl Scouts, Boy Builders, Maui U.E. Home Council, and Scout Executive Jim Ohta to attend this meeting at 10:00 a.m. During the year 1963, a total of 1,454 persons used Camp Maluhia, having a total of 18 camping days. Operating funds for Camp Maluhia come from the Maui Community Chest.

George R. Carter is chairman of the organization. Other members are Senator, Tomi Anai, George Yoshioka, Stanley Okamoto, Hachi Nakata, George Ito, and Masahiko Tokunaga.

Near-Adjudgment For Street Dance Approved

The board of supervisors' special session Tuesday afternoon was adjourned by Chairman Eddie Tam following the gavel to end the session. When Nick Tavarez, of the Board of Health, stood up and requested permission to block off lower Main street, from his establishment to Hale Makua, from 7:30 p.m. to midnight Wednesday for a sixth anniversary street dance.

Chairman Tam asked Tavarez if he had seen the police. Tavarez said he had and that they had informed him it was up to the County Board. The board voted to grant the request.

Clarence Amaral Gains Sergeant Rank In Japan

World War II veteran Clarence R. Amaral has been promoted to sergeant in the U. S. Army. He is now a stenographer in a base in Japan where he was transferred from Korea. He was with the 24th Infantry Division. Team in Japan as a stenographer.

Clarence Amaral is the son of Mr. and Mrs. Manuel Amaral of New York City.

THE IDEAL GIFT FOR ANY OCCASION!



ZENITH Clock Radio

Wake you to sleep—wakes you to wake. Has photograph jack for record listening. Wavemagnet® antenna. Accurate Telechron clock.

THE SUPER DELUXE CLOCK RADIO L527
 Wake you to sleep—wakes you to wake. Has photograph jack for record listening. Wavemagnet® antenna. Accurate Telechron clock.

THE SUPER CLOCK RADIO L539
 Wonderful step-saving convenience for any room in your home. Has plug-in automatic appliance outlet, easy to read clock, powerful AM radio for your favorite programs. Wavemagnet® antenna, sleep switch, Zenith-built speaker. Available in many colors.

Easy Payments
 GETS THE PACE IN Value... Performance!

Von Hamm - Young

Kaunakakai Has Season Yule Festive Opening

KAUNAKAKAI, Molokai, Dec. 23—Kaunakakai main street was lit up for an hour before Santa's yuletide by eager children and parents on December 16. With streets criss-crossed with multi-colored lights for the first time since windows gaily bedecked with Christmas trimmings, eager children's voices raised everywhere, Kaunakakai officially opened the Christmas season in festive style. A deep-sounding horn heralded the coming of Santa, and children rushed from the sidewalk to follow the glow, while Santa threw candy packages at the milling youngsters. With all listed in the first time observed from the street, Santa rode back and forth, greeting the crowd that thronged the highway, and finally stopped to shake hands and give packages to the hundred of youngsters that had waited for him all year long. The Molokai High School choir, in the rear of the dray, sang carols throughout the parade. Credit for this unusual visit goes to the Molokai Junior Chamber of Commerce, of which Henry Nelson is president.

Daniel Nahina In Regular Army

Daniel K. Nahina, son of Mr. George Nahina of Honolulu, enlisted into the Regular Army on December 16, for a period of three years, according to SPC Masao Shoji of the U. S. Army & Air Force recruiting station, Wadsworth Building, Wailuku. Private Nahina was sent to Schofield Barracks, for basic training, upon completion of which he will be sent to Armed Forces Post East for duty. He is the brother of Miss Aloha Maul, 1955.

Sergeant Shoji, Army Recruiter, On Vacation

Sgt. Shoji will be on vacation from December 24 to January 3. He and family are taking a trip to Kauai during the Christmas and New Year holidays. Sgt. Shoji, who is from Pauwela, is at present the main recruiting station commander for the Army & Air Force recruiting service in Honolulu.

5 BEST DAYS

BANG GO PRICES

★ Saturday, Dec. 26
 ★ Monday, Dec. 28
 ★ Tuesday, Dec. 29
 ★ Wednesday, Dec. 30
 ★ Thursday, Dec. 31

WE WILL BE OPEN UNTIL 9:00 P.M. ON SAT., DEC. 26 - WED., DEC. 30
 WILL CLOSE ON JAN. 1 and 2 for INVENTORY

Mello-Gold Fiesta ICE CREAM Qt. 49¢ ½ Gal. 97¢	OCOMA THIGHS (CHICKEN) 12 oz. Pkg. 98¢	OCOMA BREAST (CHICKEN) 12 oz. Pkg. 98¢	QUALITY CALIFORNIA FRUITS ORANGES APPLES GRAPES TANGERINES
--	---	---	--

SOLID PACK CORAL TUNA 3/98c	MID-PACIFIC TUNA FLAKES 100% LIGHT MEAT 3/85c
-----------------------------	---

OCOMA CUT-UP FRYERS 1 lb. 12 oz. \$1.38	WALNUTS, ALMOND, MIXED NUTS pkg. 49¢	MAYWOOD RIPE OLIVES 25¢	MAYWOOD GIANT OLIVES 27¢	CALMEX ABALONE 69¢	KIKKOMAN SHOYU Gal \$2.15	SWIFT'S CORNED BEEF 45¢	TAKENOKO (BAMBOO SHOOTS) #2½ 54¢	CIGARETTES Ctn. \$2.07
---	--------------------------------------	-------------------------	--------------------------	--------------------	---------------------------	-------------------------	----------------------------------	------------------------

GROCERY

EXCHANGE ORANGE BASE 2 for 28c	MISSION FUNCH 2 for 28c	BEST FOODS MAYONNAISE qt. 68c	MIRACLE SALAD DRESSING Qt. 55c	DARIGOLD MILK Lge. \$6.89 Case	DAVIES KONA COFFEE 1 lb. 85c	HILLS BROS. COFFEE 2 lbs. \$1.99	JEWEL OIL Qt. 65c Gal. \$2.14	WEBSON OIL (with coupon) Qt. 44c Gal. \$2.35	WEBSON OIL Qt. 65c Gal. \$2.14	GUM 10 lbs. \$1.05 Ctn. 27c	WHITE SUGAR 3 lbs. 98c	HILO GUAVA JELLY 26 oz. 50c	SKIPPY PEANUT BUTTER (Creamy and Chunk) 42c	CAMPBELL'S: Vegetable Soup 3 for 27c	Vegetable-Beef Soup 2 for 33c	Beef Noodle Soup 2 for 33c	LIPTON CHICKEN NOODLE SOUP pkg. 38c
--------------------------------	-------------------------	-------------------------------	--------------------------------	--------------------------------	------------------------------	----------------------------------	-------------------------------	--	--------------------------------	-----------------------------	------------------------	-----------------------------	---	--------------------------------------	-------------------------------	----------------------------	-------------------------------------

OIL SARDINES	9c
EATWELL TOMATO SARDINES	Oval 29c
GOLDEN GRAIN ELBOW MACARONI	2 for 25c
SALAD MACARONI	2 for 25c
LONG SPAGHETTI	2 for 25c
ELBOW SPAGHETTI	2 for 25c

GERBER'S BABY FOODS	6 for 55c
OCEAN SPRAY CRANBERRY SAUCE	48c
SOFTBALL CAKE FLOUR	48c
GHIRARDELLI'S CHOCOLATE	3 lbs. \$1.49
OVALTINE	lge. 75c

DIXIE PRESERVES:	
Peach Preserves	12 oz. 27c
Orange Pine Pres.	12 oz. 27c
Apricot Pres.	12 oz. 27c
Orange Marmalade	12 oz. 24c

WAXTEX	26c
WALDORF TOILET TISSUES	5 for 59c
JELLO	3 for 27c
PLANTER'S PEANUT	3 for \$1.00
MISSION PEAS	303 2 for 31c

DEL MONTE PRODUCTS

Tomato Sauce	4 for 29c
Catsup	2 for 38c
Stewed Tomatoes	#2 23c
Tomatoes	#2 25c
Pumpkin	#2½ 20c
Yellow Cling Peaches	#303 21c
Yellow Cling Peaches	#2½ 31c
Nectars	12 oz. 3 for 32c
Peas	3 oz. 13c
Peas	#303 22c
Whole Kernel Corn	12 oz. 25c
Orange Juice	#2 17c
Chow Chow	12 oz. 25c
Swt. Mixed Pickles	24 oz. 48c
Salmon	½'s 48c

BUNKA NABE

NON-SPILLING RICE POT

SLIPPERS, SEKIDAS, GETAS

(SPONGE, RUBBER, ETC.)

FIREWORKS

- SKY ROCKETS
- ROMAN CANDLES
- SPARKLERS
- FIRECRACKERS
- HAND BOMBS

REFRIGERATED ITEMS

RFD Butter	lb. 79c
Holiday Oleo	lb. 24c
Nucoa (with coupon)	lb. 21c
Kraft Pimiento Cheese (Sliced)	Pkg. 34c
Velveta Cheese	1 lb. 57c
Frozen Waffles	2 pkgs. for 47c
Bolland Biscuits	2 for 31c
Frozen Peas	20c

ORIENTAL FOODS

EXTRA FANCY SUSHI NORI	10 sheets 34c
KUROMAME TAKARANI	23c
AJINOMOTO	14 oz. \$2.69
KUMAMOTO SOBA	17c
MIRINZUKE	82c
KIRI MATSUTAKE	58c
KOGAI AJITSUKE	19c
KUROMAME TAKARANI	25c
KAMABOKO	40c
UNAGI	41c
JAPAN CRAB	67c
NARAZUKE	34c
HOKKIGAI BOILED	37c
TAKENOKO	#2 40c
TEMPURA	2 for 66c
KOKUHO DENBU	27c
FUTAMANI WONDERFUL BEER CHASER	33c
SAZAR AJITSUKE	44c
TAI CHIKUWA	51c
AJINOMOTO	28 oz. \$4.79

CANNED MEATS

SPAM	49c
BANQUET VIENNA SAUSAGE	6 for 79c
ARMOUR VIENNA SAUSAGE	3 for 49c
LIBBY'S DEVILED MEAT	6 for 59c
LIBBY'S VIENNA SAUSAGE	3 for 58c
LIBBY'S CORNED BEEF HASH	33c
LIBBY'S CORNED BEEF	52c
LIBBY'S ROAST BEEF	12 oz. 56c
LIBBY'S LUNCH TONGUE	6 oz. 38c
LIBBY'S LUNCH TONGUE	12 oz. 70c

SOAP PRODUCTS

VEL (with coupon)	lge. 30c
TIDE (with coupon)	Gt. 45c
Oxoyal (with coupon)	Gt. 65c
DREFT	Gt. 75c
PALMOLIVE SOAP	Reg. 2 for 24c
PAG SOAP	3 for 25c
IVORY SOAP	Perf. 4 for 22c
	Med. 3 for 24c
	Lge. 2 for 26c
DUTCH CLEANSER	2 for 25c
GLORIO	1/2 Gal. 35c
CAMAY SOAP	Reg. 3 for 24c
	Lge. 2 for 24c

MEAT SPECIALS

Armour Tray Pack Bacon	80c
Armour Chopped Ham	83c
Akahi Franks	50c
Chuck Steak	63c
Rib Steak	70c
T. Bone	75c

ARAKAWA MEAT MARKET
 Phone 23251



In the Realm of SPORTS

By WAYNE TANAKA

AN EARLY PICTURE OF THE PREP LOOP RACE

On paper, the Bruins of Baldwin high school should walk away with the championship of the 1954 Maui Interscholastic Basketball League but if performance in pre-season skirmishes are a basis of determining the standings at the end of the season, fans can look forward to another close down to the wire race.

Though we have yet to see the current edition of the Maui high school quiet in action, the championship in the looms at a three-team fight between Baldwin High, Lahainaluna, and St. Anthony. All of the schools suffered deeply from the graduation last fall, including Maui high which ended up in the cellar last season and the Sabers were further bolstered by the addition of Larry Souza and Mabelelan Ah Sam, members of St. Anthony's varsity crew during the last campaign who are now enrolled at the Puuone Institute.

The Bruins, under suffering coach Clarence Kamae, have shown considerable improvement while guard Roy Mochizuki, a junior varsity graduate, has established himself as one of the team's best defensive players. Six-foot-one Robert Kanaka, the tallest player on the squad, is really improving with every game and returns to forward Norman Viera, who is still nursing a torn ligament in his leg, should give the Bruins earned strong material to employ a two-rotation system. Viera earned his varsity letter as a freshman last year.

The Trojans, after suffering a humiliating 54-41 defeat to St. Joseph high school, played far better in their second game against McKinley's Tigers, were even more improved in their third outing against St. Louis College, and seemed headed for their initial victory last Monday until a late rally by the highly-touted Roosevelt quintet killed all hopes.

Besides five experienced varsity men, Coach Leo Kuluakani also has come up with two top-flight replacements in Junior Medeiros and Anthony Norman. Medeiros was especially outstanding in the games with St. Louis and Roosevelt and looms as the Trojans' chief offensive threat if he keeps up his present pace.

Guard Clarence Spencer and Alex Kong, and forwards David Medeiros and George Ruiz, all varsity holdovers, should be even better than they have been by the time the league gets underway while center Philip Murray has yet to play up to expectations.

Coach Norman Oda of the Lunas has also had five starters vice production. At the start of the season, only six members of his present squad looked capable of carrying the Lunas to another championship year but Oda has been grooming his reserves for the heavy assignment ahead in games with outer island competitors.

The West Side quintet boasts a starting group which averages 5'7". Henry Ah Leung (6-1), Donald Kalama (6), and Robert Hanoo (6-11) give the Lunas plenty of backboard strength while captain Leo Malieua and Ralph Shimomura are both respected shooters and ball handlers. They looked impressive in bowing to McKinley 49-43 and proved too superior for Kamae's Red Raiders, whom they beat 48-26.

Maui high school has not been doing too bad in its outer island games and was only beaten 67-45 by Punahou's Buffanibus, which are rated as one of the two leading teams in Honolulu. But Coach Tom Kiyosaki is depending too heavily on Alexander Bantilan on his trip and may face a tremendous problem in finding a replacement to fill his shoes when the league gets underway. Bantilan, a senior, is indelible for league competition.

The Sabers' hopes lie on 5'11" sophomore center Clarence Nihosi, who will be depended on heavily to provide the power for a lacking offensive punch. James Kashiwamura and Shinji Shishido give Kiyosaki a pair of experienced and dependable guards and Mariano Talof and Leslie Matsuura are slated for starting assignments as forwards. Kashiwamura, Shishido, and Talof are the team's only returning letter-men.

That's this columnist's view of the prep race as it looks right now. The picture is liable to change considerably by the opening game on January 8 and throughout the season. Another factor to take into serious consideration is the new three-round schedule which will probably bring about a lot more upsets with each team getting three cracks at its opponent.

IN CLOSING, WE WOULD LIKE TO EXTEND OUR BEST WISHES FOR A VERY MERRY CHRISTMAS TO ALL OUR CONTACTS AND READERS.

Sabers Bow 38-28 To Waialua High

Maui high school fell to Waialua High in the second round of the Sabers' four-day tournament last Tuesday by bowing to the Waialua high quintet 38-28 and was scheduled to meet Lanai's Pine Lads on Wednesday before returning to Maui.



If you like beer...

you'll love Schlitz

No Harsh Bitterness... Just the Kiss of the Alps
This dry and mellow brew... this beer of mateloush flavor... is the world's largest seller. More bottles and cans of Schlitz are bought—millions more—than of any other beer.

Another Gillette Cavalade of Sports Feature

THE BEER THAT MADE MILWAUKEE FAMOUS



PLAY HERE NEXT WEEK—Pictured are the key figures of the Punahou Buffanibus basketball team which will be on Maui next week with Kamehameha's Warriors for a three-night series with local quintets on Monday, Tuesday, and Wednesday. Left to right are: Mike Baughman (center), Jim Tagupa (forward), Al Espinosa (forward and team captain), Whit Newton (guard), and Al Harrington (guard). In the right photo is Harry (Packy) Pacarro, one of the team's leading scorers and chief playmaker.

Kapaa Edges St. Anthony By 2 Points

Ron Apana Garner's Winning Basket in Final 9 Seconds

Utilizing a smart stalling strategy to draw the opponent's defense off from the scoring zone, Kapaa high school barely squeaked by St. Anthony's Trojans by a 46-44 margin as Ronald Apana, standing unguarded under the basket, scored the winning field goal in the final nine seconds of play last Tuesday night at Waialua.

Only 25 seconds earlier, Clarence Spencer, St. Anthony guard, had sunk a long field goal to knot the score at 44-44 and the visiting Garden Island cagers, after moving the ball to their front court, seemed willing to settle for a tie and extend the game into an overtime period by going into stalling.

A small crowd of only 100 fans sat through a dull first half which saw the Kapaa cagers take a 14-10 lead in the first quarter and increase the margin to 24-19 at the intermission against the St. Anthony reserves.

Two baskets by Stanley Carvalho and Bob Rumion with Antone Medeiros also scoring once for the Trojans gave Kapaa a 28-21 lead during the first few minutes of the game.

Two baskets by Stanley Carvalho and Bob Rumion with Antone Medeiros also scoring once for the Trojans gave Kapaa a 28-21 lead during the first few minutes of the game.

Francis B. DeMigell, Jr. has been named as the temporary serving as the league's treasurer. A final appointed grounds manager and meeting will be held next Tuesday, December 29.

The schedule follows: Jan. 3—Kapaa vs Puuone, Waialua vs Makawao, at Kahului.

Jan. 10—Puuone vs Waialua Makawao vs Paia, at Kahului.

Jan. 17—Waialua vs Paia, Makawao vs Puuone, at Kahului.

Jan. 24—Makawao vs Waialua, Puuone vs Paia, at Puuone.

Jan. 31—Paia vs Makawao, Waialua vs Puuone, at Kahului.

Feb. 7—Puuone vs Makawao, Paia vs Waialua, at Puuone.

ROUNDBOBBIN SERIES: Feb. 14—Waialua vs Makawao, Paia vs Puuone, at Puuone.

Feb. 21—Puuone vs Waialua, Makawao vs Paia, at Kahului.

Feb. 28—Makawao vs Puuone, Waialua vs Paia, at Waialua.

WORLD NEWS COVERAGE ON NBC

Hensley Elected Prexy Of Valley Isle Gun Club

Kenneth Hensley was elected to succeed Ned Goodness as president of the Valley Isle Gun Club for 1954 at a meeting last Tuesday at the Waialua Community Center.

Other officers elected were Lloyd Sera, vice president; Gordon Cockett, secretary; and W. F. Tom, treasurer. The new officers will be installed at a dinner scheduled on January 12. Dr. Wilbert Yee will be in charge of the installation.

Goodness was named to the board of directors along with Charles Arachi, Robert A. Kim, and Kenneth Wood. Re-elected as directors were Dr. Stanley Nash and Dr. Paul Wong. (FAA).

"LAST MAN OUT," KMWI

Portuguese League Sked Is Drawn

Five double headers will be played at the Kahului Fairgrounds, three at Puuone and the season's final triathlon at Waialua's Wells Park, according to a tentative schedule announced Wednesday morning by Francis J. (Frank) Leandro, manager of the Maui Portuguese Baseball League.

Four districts are represented in the coming league and the teams will meet each other in a schedule which includes a post-season series of one round. Teams and managers are: Paia, Antone Carvalho; Puuone, August Pimental; Waialua, Benjamin Medeiros; and Makawao, John Fernandez.

Leandro also announced that Francis B. DeMigell, Jr. has been named as the temporary serving as the league's treasurer. A final appointed grounds manager and meeting will be held next Tuesday, December 29.

The schedule follows: Jan. 3—Paia vs Puuone, Waialua vs Makawao, at Kahului.

Jan. 10—Puuone vs Waialua Makawao vs Paia, at Kahului.

Jan. 17—Waialua vs Paia, Makawao vs Puuone, at Kahului.

Jan. 24—Makawao vs Waialua, Puuone vs Paia, at Puuone.

Jan. 31—Paia vs Makawao, Waialua vs Puuone, at Kahului.

Feb. 7—Puuone vs Makawao, Paia vs Waialua, at Puuone.

ROUNDBOBBIN SERIES: Feb. 14—Waialua vs Makawao, Paia vs Puuone, at Puuone.

Feb. 21—Puuone vs Waialua, Makawao vs Paia, at Kahului.

Feb. 28—Makawao vs Puuone, Waialua vs Paia, at Waialua.

WORLD NEWS COVERAGE ON NBC

KMWI To Carry Nation's Top Bowl Games New Year's Day

Radio station KMWI, NBC affiliate station, will broadcast the Rose Bowl football game in Pasadena, California, on New Year's Day, 1954, for the third consecutive year as a presentation of the Gillette Safety Razor Company which will sponsor the coast-to-coast coverage of the game on radio and television.

KMWI will also carry another top New Year's Day grid classic, the Cotton Bowl from Dallas, Texas, at 8:45 a.m., HST, which will pit the Crimson Tide of Alabama from the Southwestern conference against the Rice Owls of the Southwestern conference.

NBC and the Rose Bowl have been closely associated over the years. The nation's first coast-to-coast radio broadcast was Graham McNamee's play-by-play description of the 1927 Rose Bowl game, when Alabama trimmed Washington, 20-19. NBC broadcasted the New Year's Day classic annually until 1948. The 1954 Rose Bowl game will again pit the Big Ten Cochrans, Michigan, against the top team in the Pacific Conference, U.C.L.A.

Although other bowl games have sprung up over the country, the Rose Bowl game is still the top New Year's football contest of the nation. Since 1902, when a mighty Michigan team crushed Stanford 49-0, the Bowl game has held its top spot in annual sports events. Some of the greatest plays and thrills on the gridiron have come from Rose Bowl play.

Well remembered is the 1925 game between Stanford and Notre Dame, when six touchdowns and four field goals by the Fighting Irish won the game, 14-0.

Four districts are represented in the coming league and the teams will meet each other in a schedule which includes a post-season series of one round. Teams and managers are: Paia, Antone Carvalho; Puuone, August Pimental; Waialua, Benjamin Medeiros; and Makawao, John Fernandez.

Leandro also announced that Francis B. DeMigell, Jr. has been named as the temporary serving as the league's treasurer. A final appointed grounds manager and meeting will be held next Tuesday, December 29.

The schedule follows: Jan. 3—Paia vs Puuone, Waialua vs Makawao, at Kahului.

Jan. 10—Puuone vs Waialua Makawao vs Paia, at Kahului.

Jan. 17—Waialua vs Paia, Makawao vs Puuone, at Kahului.

Jan. 24—Makawao vs Waialua, Puuone vs Paia, at Puuone.

Jan. 31—Paia vs Makawao, Waialua vs Puuone, at Kahului.

Feb. 7—Puuone vs Makawao, Paia vs Waialua, at Puuone.

ROUNDBOBBIN SERIES: Feb. 14—Waialua vs Makawao, Paia vs Puuone, at Puuone.

Feb. 21—Puuone vs Waialua, Makawao vs Paia, at Kahului.

Feb. 28—Makawao vs Puuone, Waialua vs Paia, at Waialua.

WORLD NEWS COVERAGE ON NBC

Puns Kamehameha To Play 6 Games Here Next Week

Punahou and Kamehameha, two of the top-rated teams in the Honolulu Interscholastic League this season, are slated to invade Maui next week for a three-night series with Lahainaluna, Baldwin High, and Maui high school in the final local inter-island pre-season games.

The coaches for the three nights follow: Monday — Lahainaluna vs Kamehameha, at Lahaina; Maui high vs Punahou, at Paia. Tuesday — Baldwin high vs Punahou, at Waialua; Maui high vs Kamehameha, at Paia. Wednesday — Lahainaluna vs Punahou, at Lahaina; Baldwin high vs Kamehameha, at Waialua.

All games are scheduled to get underway at approximately 7 p.m. The Buffanibus of Punahou, who finished in a third place last year, had a string of five straight victories in pre-season games up to Tuesday night. They were to meet Kahuku high on Wednesday. Five letters are expected to go to the Buffanibus on Wednesday. Five letters are expected to go to the Buffanibus on Wednesday. Five letters are expected to go to the Buffanibus on Wednesday.

Chong Stars Again in Triumph Tuesday

Johnny Chong, Jr., who was the key figure in Roosevelt's 58-47 win over St. Anthony on Monday, played the hero's role again on Tuesday with a free throw in the final 10 seconds of play which gave the Riders, leading 38-37, victory over Lahainaluna in the most thrilling game played this season in the Maui League.

Chong scored only three points throughout the entire fray but he was one of the main cogs in Roosevelt's effort to drop the Buffanibus. He handled while guard Clarence Hicks paced the team in the scoring department with 20 points. The Riders, leading 38-37, went into a stall with two minutes still remaining in the game and used a pressing man-to-man defense all the way.

The first quarter ended in an 11-11 tie and the Lunas went ahead at the half 21-19. They opened the third quarter with a rousing rally to take a nine-point lead but the Riders retaliated quickly and made the score 32-23 with two seconds remaining in the period.

Roosevelt capitalized heavily on the 10 fouls committed by the Lunas as they dropped the Buffanibus in 23 attempts. Both teams boasted plenty of height but the key to the victory was played by the smaller players. The Buffanibus' lineup included Kenesha Watanabe, Leo Malieua, and Ralph Shimomura of the Lahaina team.

Watanabe led the local quintet with 12 points with Malieua getting eight and Shimomura and Donny Goo getting six each. The Buffanibus had eight markers and Robins Goo five for Roosevelt. The Lunas played the services of Robert Hanoo, 5'11" guard, who is on sick leave.

"LAST MAN OUT," KMWI

Pine Lads Down Kauai, Kapaa Fives

Led by David Escitto, Ronald Fuchigami, and Kijoo Cabanilla, Coach Saburo Ebin's Lanai high school quintet subdued the Red Raiders of Kauai high school, 58-42, on Friday and followed it up with a 76-59 victory over Kahuku high school on Saturday in games played last week-end on Lanai.

Despite their overwhelming win over the Garden Islanders, the Pine Lads appeared ragged and listless as compared to their previous performances. Escitto and Fuchigami tallied 20 points each for Lanai while captain Sanford Kamezawa and Herbert Ido scored nine apiece for Kauai.

Fuchigami and Cabanilla teamed to lead the Pine Lads' scoring against Kahuku but Escitto also stood out as a playmaker and ball-handler.

Making good 45 per cent of their field goal attempts, the Lanaians took a 12-4 lead in the first four minutes of play and led 22-11 at the end of the initial quarter.

Guards Liberato Viduya and Tony Masagay contributed 10 and eight points, respectively, for the Pine Lads. (From the "Lanaiian.")

Molokai Hi Beats Hawaii Five 44-25

The Farmers of Molokai high school had no time in gaining their first caps victory over the Hawaii Episcopal Academy quintet from Kamuela, Hawaii, by a score of 44-25 last Sunday at the community center here for Kauai. The Farmers, the locals dropped a 34-29 decision to Kauai high school. (They were scheduled to play Kahuku high on Tuesday, December 22.)

Molokai high will be host to Kamehameha, coached by Bob Jones, on Saturday, December 26, at 7 p.m. Traveling with the squad are manager Paul Burns, Walter Ragsdale, Kahawia Kamahala, Milton Lee, William Wong, William McBernie, El Nahulu, Cliff Ehrler, Abe Ahmad, Charles Alpa, Ernest Dias, Alex Kane, and Joe (Little) Neve. (From the "Lanaiian.")

On Tuesday, December 29, the Farmers will play the Poaquo quintet from the Big Island at 7 p.m.

In Sunday night's game the Farmers started slow but got hot after four minutes in the first quarter and were unstoppable thereafter. Coach Tom Burns had 10 players, employing a platoon system every four minutes. John Kalkimaku, Richard Burns, and Paul Trausch each scored 10 points for the victors. N. Lindsey and M. Kanemura tallied seven apiece for the Academy. Coach Bobby Mann accompanied his team of nine players.

In the preliminary trial, Francisco Abadilla's Muanaloa quintet defeated the Hawaiian team in the Shoda coached FFA team, 26-21.

Officials were: Ed Kaupu, timer; Butch Sakurada, William Ku, scorers; Tokuo Arakaki, Ernest Elias, Herbert Polaka, and Jack Kaupu, referees. (DT).

"LAST MAN OUT," KMWI

Ray Weaver Wins Lanai Open With Thrilling Finish

Trailing seven strokes off the pace in fourth place, Ray Weaver rallied in the final hole of the Lanai Open to win the 54-hole amateur golf championship by a one-stroke margin over Dave Tomashiro at the Clarendon course here on Saturday.

Weaver, who was in third place at the halfway mark of the tournament and dropped to fourth at the end of the 45th hole, copied the title with a 241 total. Tomashiro, who finished his hole in four on the 54th hole, had a 242 total. Weaver, 21, won by a five-hole margin over Dave Tomashiro at the Clarendon course here on Saturday.

Weaver, who was in third place at the halfway mark of the tournament and dropped to fourth at the end of the 45th hole, copied the title with a 241 total. Tomashiro, who finished his hole in four on the 54th hole, had a 242 total. Weaver, 21, won by a five-hole margin over Dave Tomashiro at the Clarendon course here on Saturday.

In third place was Ray Weaver with a 241 total. Tomashiro, 21, won by a five-hole margin over Dave Tomashiro at the Clarendon course here on Saturday.

DELTR0 advertisement with product image and pricing: GALLON \$3.70, HALF GALLON \$1.90, FOUR FIFTHS QUART \$.85. BOTTLED FOR DELTR0 LTD BY DELTA WINERY & DISTILLERY, NAPA, CAL. Deltro Limited Distributors of Johnny Walker Scotch & Schlitz Beer Phone 23145

Late Sports On Page 1

HOLY INNOCENTS CHURCH NOTES

By ETHEL T. EVANS
"I was glad when they said unto me, we will go into the house of the Lord." Psalm 122.

The Vicar will be on Mokohai for the monthly service there Sunday morning. There will be on Sunday School or morning service at this church, but in place of these two hours of worship there will be a family service at 8:30 p.m. It will be in the form of a Christmas Carol service with sermon. This is an opportunity for parents and children to attend church and worship at the same service.

Harry Dunn, brother of Doctor William Dunn, is recuperating very well from an operation last Monday at Pioneer Mill Hospital. Mr. and Mrs. Herbert Eshley are spending the Christmas holidays in Honolulu with their children.

Mr. and Mrs. C. W. Brooks are entertainers at a Christmas party Saturday evening. Their son, Bill, is spending his vacation with them.

Henry Chung and son were visitors in the church at Christmas. They are members of the congregation of St. Peter's church in Honolulu, and are spending Christmas on Maui.

An Acolyte's Cross was presented to Edwin Lindsey last Sunday, in recognition of his faithful and devoted service as an acolyte. He is a conscientious and well-deserving of the award.

Mrs. Adolph Leong has been appointed as a teacher in the Sunday School filling the vacancy created by the departure of Mrs. Roger Leong. She will have charge of one of the classes in the Junior

A beautiful antique clock was presented to the church by Mr. and Mrs. Roger Leong. It has been installed in the parish hall. The Rt. Rev. Mark S. Kennedy, Bishop of Honolulu, will be here for the Rite of Confirmation on Sunday, February 7th. The Christmas pageant presented by the children in the Sunday School last Wednesday evening attracted a good audience. The children were enthusiastic and did an excellent piece of work in their reproduction of some of the scenes surrounding the birth of Christ. The program was directed by the Vicar, with the assistance of the Sunday School teacher, Ernest Villers, who was in charge of lighting; Joseph DeMello, property; Harold of Hall, Mrs. Mary Hawkins and Mrs. Gratia McCook, background scenery and Mrs. Ernest Villers, music. The stringing was provided by the church choir.

The Young People's Fellowship are acting out the manger scene in the birth of Christ, in the front yard of the church each evening between 7:00 and 8:00 p.m. With appropriate costuming and lighting, the scene is beautiful. Sunday evening will bring this project to a close. The public is invited to drive by and view the efforts of the youth of our church.

Visiting the Adam Scotts over the Christmas holidays, are Mr. and Mrs. William Hattie of Honolulu. Mr. and Mrs. William Hattie of Oahu will be houseguests of the Alfred Burns over the holidays. "Mac" was formerly manager of Inter-Island Druggists.

Kahului Baptist

The Kahului Baptist Church will have a special program on Sunday evening at 7:35 p. m. It will be the annual study night at Christmas with those who have been away at school and have returned for the holidays conduct the entire service. A few of those taking part in this service will be: Misses Sally Okamura, Betty Nomura, Alyce Tokunaga, Yukie Tomooka, Naohi Gima, Jimmy Ouchi, James Fengan, Roy Fulimoto.

Sunday School will begin at 9:30 a. m. With the holidays we will have finished the first quarter of our Sunday School year. Beginning the first Sunday year, beginning we will study the book of John.

Morning worship will begin at 10:40 with the Pastor bringing the message on the subject "Time the Great Weaver". There will be a Watch Night service beginning at 8 p. m.

WORLD NEWS COVERAGE ON NBC

POOKELA CHURCH

"Why Was He Called Jesus?" will be the topic of the sermon by the Rev. Theodore Schulz at Pookela Church, Kaulaapoo, this Sunday morning, December 27, during the unified service, which begins at 9:00 o'clock. Sunday school will be held, the subject "Time the Great Weaver", beginning at 8:30.

Following the service at Pookela Church, Mr. Schulz will conduct a special service of worship at Kaulaapoo Church, Huelo, at 10:30. The young people of Pookela Church are reminded of the youth fellowship and potluck supper at Kaulaapoo Park, beginning at 5:30.

WORLD NEWS COVERAGE ON NBC

Puunene

The service of worship at Puunene Congregational Church begins at 10:30 a. m. with Rev. M. Katagiri delivering the message. Everyone is cordially invited.

"GILDSLEEV" ON KMWI

ALEXANDER YOUNG HOTEL

Special Rates To Neighboring Island Residents Exceptional Food and Service Air-Conditioned Dining Room - Coffee Shop Cocktail Lounge Popular Prices HONOLULU

FOR SALE

- One Ingersoll Rand Air Compressor 1 1/2 Horse Power One Doughnut Machine One Electric Meat Slicer One Steel Safe, 43" High, 30" Wide, 28" Deep

Write: E. K. FERNANDEZ 1094 So. King St. Honolulu, T. H.



MR. AND MRS. ROWLEY

Maile Perreira Weds R. Rowley In Utah Rites

Making their home in Provo, Utah, after a honeymoon weekend spent in Hawaii following their wedding ceremony morning of November 6 are Mr. and Mrs. Richard Rowley. Mrs. Perreira is the former Maile Joyce Perreira, daughter of Mr. and Mrs. Tony Perreira of 217 Kaahu street in Wailuku. Her husband is the son of Mr. and Mrs. A. W. Rowley of Richfield, Utah.

The newly weds are both seniors at Brigham Young University in Provo, where Mrs. Rowley is doing her student teaching. The wedding took place in the Maui temple. The couple was united in marriage by Elder Anderson, president of the temple.

The lovely bride was gown in a ballerina length flowered lace gown over satin and carried a bouquet of orchids with a dagger-veil set in pearl. Attending the bride was Miss Le Ila Ogden, while William Rowley was with another best man.

After the beautiful ceremony, the wedding party had a dinner at the Rainbow hotel banquet room. Those attending were: Mr. and Mrs. A. W. Rowley, Mr. and Mrs. William Rowley, Mr. and Mrs. Clint Robinson, Mr. and Mrs. Le Ferre, Mr. and Mrs. Charles Nelson, Mr. and Mrs. Morris Ogden, Miss Ila Ogden, DeVon Ogden, Mr. and Mrs. Wayne Campbell, Bishop and Mrs. Elie Christie, Elder Anderson, Mr. and Mrs. Joseph Neilson, the groom's grandparents.

"GILDSLEEV" ON KMWI

Makawao Union

Church School at 10:30 a. m. with classes for beginners through grade school age. Morning worship, at 10:30 a. m. with subject "Is There Any Progress?" Sermon: "Is There Any Progress?"

The Membership Committee will meet on Sunday at the close of morning worship. New Year's Communion and Reception of new members will be held at Morning worship on Sunday, January 3.

The Standing Committee has designated February 15 as the date for the annual meeting of the congregation.

VICTORIAL EVERY MONTH

St. John's

Services for Sunday, Dec. 27. 7:30 a. m.—Holy Communion; 9:30—Sunday School; 10:30—Morning Prayer and Sermon and New Years Day 10:30 a. m.—Holy Communion Service.

"JOY ROGERS" KMWI

IN THE CIRCUIT COURT OF THE SECOND JUDICIAL TERRITORY OF HAWAII AT CHAMBERS NOTICE OF THE TIME AND PLACE OF THE DRAWING OF GRAND AND TRIAL JURORS TO SERVE AND ACT AS SUCH FOR AND DURING THE A. D. 1954 TERM OF SAID CIRCUIT COURT

NOTICE IS HEREBY GIVEN that the drawing of GRAND AND TRIAL JURORS to serve and act as such in and for the Circuit Court, Second Circuit, Territory of Hawaii, for and during the A. D. 1954 Term of said Court, will take place in the Court Room of said Court, Wailuku, Island and County of Maui, Territory of Hawaii, on the 28th day of December, A. D. 1953, at 10:00 o'clock in the forenoon of said day.

Dated at Wailuku, Maui, Territory of Hawaii, this 18th day of December, A. D. 1953.

(S) WILLIAM B. BROWN William B. Brown Judge of said Court. (Seal of Court)

ATTEST: (S) D. W. TALLANT, D. W. Tallant, Deputy Clerk of said Court. (M.N.—Dec. 19, 53, 1953)

Wailuku Union

The annual Youth and Scout Sunday will be held at the Wailuku Union Church on December 27 at its regular ten o'clock service. A deputation of students from Punahou School in Honolulu, consisting of basketball and football players, will conduct the service, with the Rev. Kenneth Reick, chaplain of Punahou, preaching. The Pilgrim Fellowship, the Boy Scouts of the church, the Girl Scouts, and the Cubs will be in attendance, with their leaders.

Those from Punahou who will take part are Charles Henderson, Edmund Rogers, Jr., Harry Pacarro, Alvin Harrington, and Whitney Newton. Harrington is to sing solo. The Alleluia Choir, the Boy Scouts of the church, the Girl Scouts, and the Cubs will be in attendance, with their leaders.

Those from Punahou who will take part are Charles Henderson, Edmund Rogers, Jr., Harry Pacarro, Alvin Harrington, and Whitney Newton. Harrington is to sing solo. The Alleluia Choir, the Boy Scouts of the church, the Girl Scouts, and the Cubs will be in attendance, with their leaders.

Sunday School will take place as usual at 9 o'clock in the evening. The Pilgrim Fellowship, and those of the seventh, grade and up are invited to a Youth Rally of the Maui Congregational Young People's Association, at Kaulaapoo Park, where Mr. Hawick and the Punahou Deputation will again speak and lead. There will be Potluck Supper at 5:30, followed by Vespers and games.

The date for the Annual Church meeting has been set for January 1, and nominations for officers should have been placed upon the bulletin board.

"ROCKY FORTUNE" KMWI

Yule Service And CE Rally Slated At Kaulaapoo

The annual Christmas program and worship of Kaulaapoo Church, in Huelo, will be held this year on the Sunday after Christmas, December 27. The festivities coincide with the quarterly Christian Endeavor Rally of the East Maui churches, to which the church in Huelo will play host.

The rally will begin at 8:30 and it will be directed by Mrs. Thelma Aiu. A program of Christmas recitations and carol singing by and for the children will begin at 10:30. At eleven o'clock a brief service of worship will be conducted by the Rev. Theodore Schulz. The speaker of the morning will be Dr. K. C. Leckie, Director of Maunaloa Community College.

Mrs. Daisy Kalaupua is the licensed presiding in charge of Kaulaapoo Church.

"ROCKY FORTUNE" KMWI

CIRCUIT COURT, SECOND CIRCUIT, T. H.

In the Matter of the Estate of DIRKS K. TAIRA, late of Hailuku, Maui, deceased.

PROBATE NO. 488

Filed Petition of ETHEL KIKU TAIRA, widow of deceased, alleging intestacy of said decedent, showing property within the jurisdiction of this Court, and asking that she be appointed as Administratrix of said Estate.

Thursday, the 7th day of January, 1954, at 10 o'clock A. M., before the Judge presiding in Probate in his court room at Wailuku, Maui, T. H., is appointed a date and place for hearing said Petition and all parties interested. Dated: December 26, 1953.

BY THE COURT: LYONS K. NAONE, JR. Asst. Clerk. (M.N.—Dec. 12, 19, 25, 1953)



Meat market advertisement listing items like Bacon 79c, Picnic Hams 55c, Butter 49c, Pork Roast 69c, Pork Steak 75c, Pork Chops 83c, T-Bone or Sirloin Steak 75c, Pot Roast 75c, Rib Roast 70c, Catsup 29c, Beef 45c, Sausage 51c, Prem 44c, Shortening 75c.

Market advertisement for 'SUPER MARKET' listing various food items like Butter, Dog Food, Peaches, Tuna, Sugar, Mayonnaise, Coffee, etc., with prices.

Prices Are Born Here - Not Raised

Maui Grammar And High School Students Who Sang Christmas Carols On KMVI



PAIA FIRST GRADERS



PUUNENE FIRST GRADERS



KAUNOHA FIRST GRADERS



WAILUKU ELEMENTARY FIRST GRADERS



ST. ANTHONY FIRST GRADERS



SPRECKELSVILLE GIRLS' CHORUS

'Let's Go To School' Shows Set

High School Students On Station KMVI

Starting February 5, and running for eight weeks, the four high schools of Maui will produce the "Let's Go to School" program series over Station KMVI. Kiyoto Tsubaki, speech teacher, announced.

At a recent meeting held in Studio A of the broadcasting station, it was agreed by the different advisors, and student representatives, that each school was to produce two half-hour shows, and that the programs would run for eight weeks, tentative broadcasting time being Tuesday nights at 8 p. m. It was also agreed that the shows be tape-recorded either at the various schools, or KMVI.

During the previous years, the "Let's Go to School" shows were featured at the different high schools, with student representatives participating. The tape-recording features were also held in the studio of KMVI, with schools taking turns as host. These programs were usually in the nature of panel discussions.

This year, the schools may produce any type of show they please. The different advisors for the programs are: Kiyoto Tsubaki, Baldwin; Mrs. Pansy Heyer, Maui High; Brother Joseph, Saint Anthony boy's school; Sister Mary Modesta, Saint Anthony girl's school; and Doris Takatsuka, Lahainaluna. Richard Mawson, KMVI station manager, will chairman all of the shows. (MNA—JED)

—GREET THE MORNING WITH KMS—

Art Students Display Work At Baldwin High

Best works of all art classes at Baldwin high school have been displayed in the art window since the beginning of school.

The latest projects of the advanced art students, under instructor Hagime Fujimoto, include the painting of rough and smooth objects, like iron and wood. These students drew their interpretations of large crowds during the first week in December. A majority of the students used crowds at the local football games as their subjects.

The beginning art classes learned to print numbers, as well as letters in the alphabet, during the first week in December. During the second week, the classes drew Christmas pictures and colored them with waxy colors or pastels. (MNA—BHS)

—NIC SYMPHONY ON SUNDAY—

SAGS Seniors Stage Special Christmas Show

The singing of the ancient chant, "O Come to Comy Emmanuel," marked the opening of the special Christmas broadcast presented on Radio Station KMVI at 8 p. m. Tuesday by the senior music class of St. Anthony girls' school.

The program, presented by the class under the leadership of Sister Loreta Cecilia, the music director, combined scriptural quotations from both the old and new Testaments, interspersed with the singing of suitable Christmas carols.

Included in the program were: "Let Our Gladness Know No Limit," Bohemian; "O Sanctissimus," Sicilian; "O Little Town of Bethlehem," Lewis H. Rodman; "Lo! How a Rose," M. Francisco; "O Holy Night," Adolphe Adam; "It Came Upon a Midnight Clear," Richard Willis; "The First Nowell," French-English; "I've a Little Faith," Franz Gruber; "We Three Kings of Orient Are," E. H. Hopkins; "Come All Ye Faithful," J. Leasing. (MNA—HKS)

—FICTIONAL EVERY MONTH—

SAS Children Sing On KMVI Christmas Show

Pupils of Grade 1A of St. Anthony school make their radio debut at 7:30 p. m. tonight (Wednesday), in a special Kids' Christmas program on KMVI.

Under the direction of Sister Mary Adrienne, the children will present a program of individual and group singing. The class will sing "This Is Jesus' Birthday" and "The Little King." Barbara Hotta, Marian Hirotsu, Aho Freteira, and Jamie Phillips will sing solos. (MNA—CW)

—CHARNET, MAY SUNDAY—

Better Roads Sought By MHS Alums, Students

Resurfacing of the road from Hana highway, at Knaa, by Maui high school, and the dirt road leading to the school, from the front of the Paia telephone exchange on Baldwin avenue, was requested by the Maui High School Alumni Association and the Maui High Students' Association, in communications read at the meeting of the board of supervisors on Friday.


The letters were signed by James Takakura and Portia Wassman, president of the alumni and student body, respectively. They were received by the public works committee last April.

Engagement Announced

Miss Lois M. Estill, RN, of Central Maui Memorial hospital, has announced her engagement to Walter Waiaki of Punahoa hospital. Their wedding plans are set for early February 1954. (HA)

Refered to the public works committee for recommendation.

During discussion, Public Works Chairman Ignatius Shimada and his usually ardent brother, Finance Chairman John Iulio, wangled as to who was responsible for the fact that these roads were not resurfaced this past year. Shimada contended the matter had been referred to the finance committee by the public works group last April.



About THINGS and PEOPLE
by Edna E. Jenkins

MERRY CHRISTMAS: For years I have treasured this rough translation of a Christmas hymn, said to have been chanted by an old Maori Christian. This year Lloyd Stone used the first two stanzas on my Christmas card, so I thought you might like to have me share the entire poem with you.

MAORI CHRISTMAS HYMN

Had my Lord been born here, angels might have ringed us
Standing 'round our islands, wing-wide to wing!
Had my Lord been here in the time of red Lehua blossoms
Then dark-eyed chiefs would hasten, offering to Him
Precious shells, fine mats, and the proud feather cloaks.

And the trees of Maui spring would grow dim
And our weary shepherds, rough-armed but tender,
Toss whose ears are keen for sheep and lambs that mourn,
Ah! they would have risen, hastening to the Lightening,
Fighting or sobbing joyfully, "The Lamb of Lambs is born!"

Our sky would be an orchard, apple blossoms shading us for stars,
Our own sins hidden that speak to us of loss,
Hidden out of sight by some great, thoughtful angel
Lest we too soon should look upon the Cross.

O! my heart goes crying, crying
Through these days that long await Your coming,
We too, have cattle and our straw is sweet,
We too, have fisher-folk, sail-boats and nets,
O! for one clear imprint here of Your little Feet!



KAHULUI FIRST GRADERS



BALDWIN HIGH SCHOOL CHORUS



LAHAINALUNA HIGH SCHOOL CHORUS



MAUI HIGH SCHOOL CHORUS



ST. ANTHONY GIRLS' SCHOOL CHORUS

HAPPY NEW YEAR 1954

MAUI SUPER MARKET Specials

MONDAY, DECEMBER 28, TO THURSDAY, DECEMBER 31

CLOSED JAN. 1-2-3 * OPEN MONDAY, JAN. 4, 1954



謹賀新年

昨年はお世話になりました
本年も相変り申す引立て下さい

御正月用日本品安売

FRESH ISLAND STEWING HEN Drawn	lb.	49c
BOSTON BUTTS	lb.	65c
ARMOUR STAR TRAY PACK BACON	lb.	79c
ARMOUR STAR CUT UP FRYERS	1# 8 oz.	\$1.34
ARMOUR STAR CHICKEN LEGS	lb.	\$1.10
FROZEN SHRIMPS	lb.	84c
ARMOUR STAR CHICKEN WINGS	lb.	51c
AKAHU HOT DOGS	lb.	49c
RIB EYES	lb.	74c

Mochi Rice NEW CROP EX. FANCY	LB.	21c
Renko Tai (Frozen)	LB.	64c
Yudedako (Frozen)	LB.	69c
Monko Ika (Frozen)	LB.	76c
Shio Buri	LB.	98c
Shio Kazunoko	LB.	79c
Unagi KIKUSUI		43c
Sushinori YAMASO		43c
Shiitake	3 OZ.	79c
Hokkigai (USUI)		37c
Kogai		19c
Kamaboko		42c
Nishime Kobu 5 1/2 OZ.		11c
Mochiko 11 OZ.		23c
Azuki	LB.	27c
Kuromame	LB.	27c
Kuromame Takarani		23c
Narazuke		35c
Mirinzuke		32c
Renkon Mizuni		41c
Konnyaku		27c
King Shoyu GAL.		\$1.84
Kikkoman Shoyu GAL.		\$2.19
Ajinomoto 14 OZ.		\$2.69
Kachi Guri		25c
Chikyuuma Vinegar		32c

GROCERIES

Garnation Milk	\$7.27
BEST FOODS Mayonnaise	Qt. 69c
Wesson Oil	Qt. 74c
Crisco	3# 99c
DEL MONTE Galsup	2/38c
LIBBY'S Corned Beef	52c
Spam	48c
VAN CAMPS Pork & Beans	2/27c
WELPACK Tomato Sardine	31c
LIBBY'S V. Sausage	3/58c
HUNT'S SWEET MIXED Pickles	12 oz. 23c
LINDEY Ripe Olives (Jumbo)	30c
LINDEY Green Olives (Ex. large)	29c
HUNT'S Y. C. Peaches	2 1/2 2/61c
HUNT'S Fruit for Salad	2 1/2 49c
COFFEE 2#	\$1.99
SUGAR 10#	\$1.05
EXCHANGE Orange Base	2/28c
CALMEX Ahalone	89c
Darigold Butter	lb. 87c
Holiday Oleo	2# 49c

MEAT & PORK

HAMBURGER	lb.	49c
CHUCK STEAK	lb.	63c
RIB STEAK	lb.	70c
Rib Roast	lb.	70c
SIRLOIN STEAK	lb.	75c
T. BONE STEAK	lb.	75c
SUKIYAKI	lb.	89c
FRESH PORK (All cuts)	lb.	75c
BETTY CROCKER CAKE MIX Yellow		39c
White		49c
Honey Spice		52c
SOFTASILK BISQUICK		59c
GOLD MEDAL FLOUR 5#		59c

Heinz

Baby Foods	6/55c
Chicken Noodle Soup	2/31c
Vegetable Soup	2/28c

CORAL SOLID PACK
3 for 98c

MID-PACIFIC
100% LIGHT MEAT LUNA FLAKES 3/85c

SOAP & PAPER

Ajax	2/25c	Ivory Soap Mod.	3/24c
Palmolive Bath	3/24c	Rinco Gl.	88c
Waxtex	2/58c	Waldorf Tissue	5/88c
Tida or Cheer Gl.			76c

1953 Needle Is Awarded Rating Of First Class

Baldwin's 1953 Needle, edited by Norman Lee Chang, won first class rating in the recently conducted critical service by the National Scientific Press Association.

"You've done a fine job with your recording of the school year," the book is hard to read because of the "linking" one judge commented. The theme, identification, major headings, body type, candid shots and school life, were rated excellent.

Blaise Baldwin, Patricia Lane, Eloise Kunitola, Jean Fujimura, Patricia Hirouji, Edith Kanohua, Marian Takemoto, Mary Ohno, and George Sakagawa were section editors of the publication. Photographers were Stanley Kamita, Violet Tanaka and Nagatane Photo Studio.

Nicholas Orlov, production manager of the Maui Publishing Company gave technical advice last year. Maui Publishing is also handling this year's Needle (MNA-BRS).

Homemaking Uses Three Rooms At Baldwin High

Baldwin High students wonder what the whirring sound coming from the south wing will find its mystery if they observe the new occupants of room 9.

Mrs. Gladys Jackson's homemaking classes moved to room 9 at the end of the first quarter. The action was the result of an agreement made between Mrs. Jackson and Mrs. Hannah Bonney, homemaking teachers, to separate the large classes because of lack of space.

Rooms 177-178 are now being used for units on food by Mrs. Bonney while at the sewing is being done in room 9. The girls now in sewing classes will alternate with the cooking class girls next quarter with both teachers also exchanging positions.

(MNA-JY)

Rust stains on clothing often will give in to soaking in lemon juice, after which the stain should be sprinkled with salt and the garment dried in sunlight.

HOME BUILDERS SHOPPING GUIDE

CHUNG'S RADIO SERVICE
1352 MEI BL. PH. 2275
Expert TV & Radio Repair Service

Your Chidden Paint Headquarters
IMPERIAL PAINT SHOP
49 Central Ave. PH. 2222

For Photo-Art, Hobbies-Office Supplies
Maui Dry Goods & Groc. Co.
1907 Main St. Phone 8844

PHONE 74673

Home Repairs

WE REPAIR BUILD REMODEL

ANYTHING - ANYWHERE

Maui Branch

KAUAI DEVELOPMENT COMPANY, LTD.
P. O. BOX 193 KAHULUI, MAUI

MECHANICAL & GENERAL CONTRACTORS
FABRICATORS & ERECTORS OF STRUCTURAL STEEL

SHOP AT NASKA OFFICE AT NASKA

BEE GEE

THEY'VE DOUBLED UP ON CHRISTMAS JOY, THEY USE OUR GAS FOR HEAT - OH, BOY!

Enjoy Convenience with Bee Gee for:

- Heating
- Cooking
- Refrigeration
- Hot Water
- Incinerators
- Clothes Dryers

BUTANE GAS
The cheapest and most modern.

DRY GOODS
MAUI TRADING COMPANY
BUTANE GAS
KAHULUI, MAUI

Specials

New Years

CORAL SOLID PACK 3 for 98c	100% LIGHT MEAT TUNA FLAKES 3/85c
NEW & DIFFERENT Smoked Tuna FOR SPREADS, DIPS, SALADS	ENRICHED FLOUR 24lb. 10lb. \$1.16

MEATS

Round Steaks	75c per lb.
Sukiyaki Meat	89c per lb.
Boston Pork Butts	59c per lb.
Mainland Franks	55c per lb.
Ham 10/12# whole	75c per lb.
Swanson Fryers	- 1 lb. 12 oz. \$1.37

MACK'S MARKET
Phone 2495
Lahaina

MAUI SHOKAI
Phone 6062
Kahului

TK Super MARKET
Phone 5501
Happy Valley, Wailuku

NAKATSUKASA STORE
Phone 6W634
Haiku

TAD'S MARKET
Phone 27865
Wailuku

YAMATO STORE
Phone 2W564
Paia

MIKE'S MARKET
29945-33465
Wailuku

ORIENTAL FOODS

AJINOMOTO	14 oz. \$2.69
KIKKOMAN SHOYU	Gal. \$2.15
BAMBOO SHOOTS	2 1/2's 59c
CHINESE LONG RICE	2 for 35c
KUROMAME	23c
JAPANESE VINEGAR	32c

LIBBY'S

CORNED BEEF	52c
VIENNA SAUSAGE	5 for 99c
DEVILED MEAT	6 for 59c
PEACHES	2 1/2's 31c

SOAP PRODUCTS

SUPER SUDS	gt. 69c
FAB	gt. 75c
DREFT	gt. 75c
PALMOLIVE SOAP	Reg. 3 for 25c - Bath 3 for 34c

GROCERIES

WESSON OIL	Qt. with coupon	64c
BORDEN'S MAYONNAISE	Qt.	62c
GOLDEN ARROW BUTTER	Grade A lb.	81c
SUGAR	10 lbs.	1.05
BISQUICK	large box	52c
HOLIDAY OLEO	lb.	24c
K'S ORANGE ADE	3 for	1.00
DARIGOLD MILK	Tall Case	\$6.89
	Tall Size	6 for 89c
PLANTER'S PEANUTS	8 oz.	3 for 1.00
PLANTER'S PEANUT BUTTER	14 oz.	42c
LINDSAY OLIVES	Med.	29c
TENDERONI	2 for	25c
CALMEX ABALONE		69c
CRISCO	3 lb. can	99c
SCHILLING COFFEE	2 lb. tin	1.95
EXCHANGE ORANGE ADE BASE	2 for	29c
STARLAC	1 lb.	41c
GHIR. CHOCOLATE	3 lb. can	1.49
MORTON SALT		11c
GERBER'S BABY FOOD	6 for	55c
SCOTT PAPER TOWEL	2 for	47c
WALDORF TOILET TISSUE	5 for	59c
GUM	ctn.	68c
HUNT'S FRUIT COCKTAIL	2 1/2's	39c

MONDAY, DEC. 28 **CLOSED JANUARY 1-2-3**
to **THURSDAY, DEC. 31** **FOR INVENTORY**

DASH & CARRY

HAWAIIAN GROCERY STORES

100% HOME OWNED

YOUR LOCAL LITTLE NEIGHBORHOOD STORES AT BIG SUPER-MARKET PRICES.

Country Life... By Country Wife

SIGH! WELL, IT'S OVER and most of it went very well. For instance, we are glad we exercised control and said nothing when the tinsel was put on the tree by the "stand-back-and-toes" method, the kids said it was the best part of it; we are glad that we have finally been converted to decorating trees and houses a week before Christmas (although this is in direct opposition to our childhood tradition). After all, the anticipation is before, not after, also we are glad that we had the courage to throw those awful war lights (one goes out, they all go, away last year so we didn't have that trouble this year).

Nothing much to do today but let the cleaner suck up the bits of tinsel, sweep up the remains of yesterday's plastic toys, plan a strategy of refereeing—Jimmy, you must let Allan ride the tractor, too. Santa couldn't bring two of everything," decide whether to a/king the turkey for supper, or is there enough to just slice it tonight and cream it tomorrow, look forward to Mary-Kene and Father's party tonight (what a nice way of cheering up this rather anti-climatic day), and look back on some of the happenings of the last few days—to wit:

Kindergarten teacher Alice Fleming's thoughtful gesture of having a group picture of her class as her greeting card to them; it's nice that more and more people are using snaps on their cards (an album devoted just to these makes a wonderful record over the years of friends and family and how they grow); the perfectly beautiful decorations and service of our Holy Innocents church Christmas Eve and how grateful we are that we had at least one hour to think of nothing but the true meaning of Christ's birthday; Emma Sharpe's "just right" annual supper after the service, her lovely home brightly decorated, the long delicious buffet, the gaily wrapped gifts, old friends embracing, and, of course, the staging—Emma is always surrounded by fun and laughter and singing; Vi and Skeets Harper's wonderful house, warming last Saturday with everything so perfect, including the moon, that nobody wanted to go home. They are in Peg and Whit Tompkins's ex-home which has been completely renovated and redecorated and is yummy! The Tompkins are luxuriating in their own dream house at Napili—locally referred to as "The Hut." Ha!

TREE OF THE SEASON at the Barge, indicating that Sally has inherited mother Frances Allen's flair for achieving spectacular effects with a twist of the wrist and a bit of imagination (and a lot of hard work). The tree is a giant Norfolk Island pine, dotted with clusters of big gold, silver and green balls, then the trunk solidly encrusted with varied-sized balls of the same hues, all the lights green. Stunning! Another breath-taking effect achieved by

tall stalks of lauhala painted dark green with the golden balls massed in the heart of each tuft, and the tremendous wreaths made entirely of baby woodruffs sprayed pale chartreuse and tied with dark green ribbon. Thinking of this lovely home Yonkers, that some people had trouble finding it some time ago. Would be like searching for the Moana at Waikiki.

Oh, yes, and our communal dinner yesterday. Talking about it beforehand one of the guests said, "It will either be wonderful or terrible!" and we were inclined to agree. Well, the teams lined up 17 children against 19 adults and at the end of the day the score was about tied with no big fat runs, and maybe a couple of errors. Everyone had a good time—even the children, which was nice inasmuch as the idea was mainly planned for them. They were even pleased the table-setting committee in not allowing a single child to sit next to his own parent. This cut down the "Susy, sit up straight and stop kicking" considerably.

The procrastinators ran into a bad moment when it evolved that turkeys were scarce (there was an ample supply Thanksgiving so no one even thought of this problem) but the required four fowls were accumulated and, delicious they were—and enough for everyone to have "pickings" next day. All in all, a very successful experiment. Hope you had fun, too.

NOTICE OF REAL PROPERTY RETURNS
FCR 1954, SECOND TAXATION DIVISION
COUNTY OF MAUI

Notice is hereby given, pursuant to order of the Tax Commissioner, that no real property tax returns will be required to be filed in the SECOND TAXATION DIVISION, for the year 1954 except as herein-after required.

(1) Any changes in ownership of real property since January 1st, 1953 and any new construction shall be reported and a return filed, if necessary, with the Assessor on or before January 31st, 1954.

(2) That where the taxpayer has acquired his home by a deed made on or after July 1st, 1951, said deed shall have been recorded prior to January 15th of the year which the exemption is claimed.

(3) All taxpayers claiming exemptions from real property taxes for the year 1954 as provided for by law (exemption on homes including lease-holds), churches, schools, institutions, etc.) must, in order to be entitled to such exemption, file a claim on or before January 31st, 1954 (When calling to file your claim, be sure to bring in your last year's assessment).

Forms for returns and claims for exemptions may be secured at the Office of the Assessor.

FRANK A. ALAMBDA
Tax Assessor
Second Taxation Division
Done in conformity with Sections 5155 and 5147, R.L.H. 1945.
(M.N.—Dec. 23, 26, 30, 1954).

T. AH FOOK SUPERETTE

KAHULUI 6255 WAILUKU 4185

SPECIALS FROM DEC. 26 TO DEC. 31

5 DAYS SPECIAL SATURDAY TO THURSDAY

Meats

HAMBURGER	lb.	49c
STEAK, Round	lb.	78c
STEAK, Round Ground	lb.	78c
STEAK, Sukiyaki	lb.	89c
STEAK, Chuck	lb.	63c
ROAST, Chuck	lb.	63c
PORK ROAST, Mainland	lb.	59c

FREEZER SPECIALS

HOT DOGS, Akahi	lb.	49c
BACON, sliced	lb.	79c
SALAMI, Kosher Sliced	lb.	59c
BOLOGNA, sliced	lb.	49c
LUNCHEON MEAT, Sliced	lb.	59c
HAM, picnic	lb.	59c
HAM, whole or half	lb.	79c
OXTAIL	lb.	39c
OX TONGUE	lb.	45c
CHICKEN WINGS	51c Box	
CHICKEN BACKS & NECKS	2# Box	53c
SPINACH	20c Box	
GREEN BEANS	20c Box	
WAFFLES	24c Pkg.	
ICE CREAM	qt.	49c
BUTTERMILK, Dairyman's	qt.	35c
YAMI YOGURT, Dairyman's	32c Box	
NUCOA	2 lbs.	49c
FRYER, Swanson	1 3/4# Box	1.37

CORAL SOLID PACK 3/98c

MID-PACIFIC TUNA FLAKES 3 FOR 86c

HEINZ STRAINED FOODS 6 for 55c

JUNIOR FOODS 3 for 39c

SOFTSILK CAKE FLOUR Large 49c

We Will Be Closed Jan. 1 and 2 For Inventory

Wishing You All A Happy New Year

Oriental Foods

Chinese Long Rice	2/39c
Kikkoman Shoyu Gal.	\$2.19
Abalone	69c
Unagi	41c
Takenoko	30c
Ajinomoto	1ge. \$2.69
Tempura	34c

GROCERIES

Vienna Sausage, Libby's	3/58c
Vienna Sausage, Baxter	3/40c
Deviled Meat, Libby's	6/58c
Sardines, Tomato oval	29c
Sardines, Oil	9c
Gum, Wrigley's	Gtn. 68c
Lux Toilet Soap, Reg.	3/24c
Camay Toilet Soap, Reg.	3/24c
Cheer, Gt.	75c
Toilet Tissue, Waldorf	5/59c
Kleenex, 200's	5/\$1.00
Hilo Guava Jelly, 26 oz.	50c
Pillsbury Flour	10# \$1.16
Sugar	10# \$1.05
Cigarettes, Regular	\$2.07
Coffee, MJB 2#	\$1.99
Cranberry Sauce, Ocean Spray	22c
Pumpkin, Libby's	19c
Biskit Mix, Fishers	52c
Walnuts	lb. 49c
Almonds	lb. 49c
Raisins, Cluster	pkg. 34c
Milk, Garnation, Large	6/98c
Salad Macaroni, Spaghetti, Tenderoni 8 oz.	2/25c
Planters Peanuts, large	3/\$1.00

Leo Loo To Embark To Far East

Sergeant First Class Herbert T. C. Loo, USARPAC recruiting representative on Maui in 1951 and 1952, will soon be recruiting non-commissioned officers at Aberdeen Proving Ground, Maryland since Sgt. Loo has been assigned to the American Forces, Far East.

Sgt. Loo left Aberdeen, where he had been assigned to the 3001 Headquarters Detachment, 13th week of December 2 and visited his family in Honolulu before reporting to Camp Stoneman, California, December 12.

He enlisted in the Army December 1945, in Honolulu, and was placed in the Quartermaster Corps of the Army Personnel Center, Ft. Khamhambha. He served there as company and secretary to the battalion executive officer until May, 1948.

He was then transferred to Ord-

nance and has since served in this branch exclusively. His assignment was with the 96th Ordnance Ammunition Detachment Company, Altnaha Crater, Okla. as company clerk. In April, 1947, the sergeant was transferred to Headquarters, The Ordnance Battalion, as personnel sergeant-major. This assignment was at the Hawaiian Ordnance Depot at Ft. Shafter, and lasted until November, 1948.

For three months, Sgt. Loo served as supply sergeant for the 27th Battalion and was then assigned to Battalion Operations NCO, a position he held at the time of his discharge in July, 1949.

He re-enlisted immediately for Headquarters Company, South Sector Command, at Ft. Rucker, Honolulu. At this camp, located near Waikiki Beach, he was a personnel management specialist.

In December, 1949, he was transferred to USARPAC as a member of the examining and computing staff. Serving with Headquarters Company at Ft. Shafter, he worked in connection with the Army's career guidance program. While attached to USARPAC, he also worked in personnel administration in-

FAA Announces Purchase Of Seven DC-7 Planes

Federal American World Airways has purchased a fleet of seven DC-7B turboprop aircraft from Douglas Aircraft Co. The aircraft, first of new long-range turboprop aircraft designed for over-ocean operations, the Clippers will be the speediest service when they are delivered in 1956, FAA said. The seven Clippers will cost approximately \$14,000,000. There has been no announcement as to which of Pan American's world routes they will fly.

At this time, he was selected as USARPAC Army recruiting representative on the island of Maui. He held this position for two years. In January of this year, Sgt. Loo was reassigned to the United States. After two months in casual status at Ft. Custer, Michigan, he started one month on interim assignment at Ft. Belvoir, Va. He was going to APG.

The sergeant and his wife, Margaret, have two children: Edward, 10, and Julie, 7.

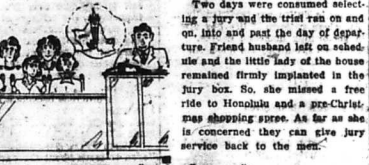


THE YEAR ABOUT TO CLOSE

For the first time and both trial and grand jury were well represented by the fair but firm sex. In a recent trial, the defendant with six men and one of these fair ones would just as soon have had jury service strictly for the men. It seems that friend husband of this particular year was due for a few days in Honolulu and lasted the little lady to go along, all expenses paid.

All went well with enthusiasm running high in the household as bags were packed and tickets purchased. All plans were firm up and all that remained was the arrival of the big day. Instead, a few days prior, arrived a police officer with a summons. Jury duty.

Oh, well, she wouldn't be picked, and if she was, the trial wouldn't run more than two days and departure time was three or four days after that, so there was nothing to worry about. This fair lady didn't know her lawyer and court procedure.



Two days were consumed selecting a jury and the trial ran on and on, into and past the day of departure. Friend husband left on schedule and the little lady of the house remained firmly implanted in the jury box. So she missed a free ride to Honolulu and a pre-Christmas shopping spree. As far as she is concerned they can give jury service back to the men.

One of Maui's prominent members of the medical profession is going to become eligible for farm-patrol and the rest of the hand-eye control by the nature. Dr. H. H. keeps an expanding his avocational activities. According to friends, this doctor's sprawling acres now provide pasture land for horses and cattle, peas for chickens, rabbits, pigeons and ducks and a sty for pigs. And he does all right at gardening, too.

Incidentally, the tender aged patients of this serene follower of Hippocrates share in the products of his off-duty endeavors. Bantam chicks raised in his hennery or whatever one calls a chicken brooder make fine presents for his little friends. It is just a matter of time and patience before he becomes Maui's busiest butter-egg man.

Thanks to Attorney John Brown for this egg, via the boss. A week or so ago, a well dressed man presented himself at the ticket office of one of the airlines and purchased a ticket. When he presented a personal check in payment the counter girl courteously refused to

Pledged To Holy Name Society

Twelve students of St. Anthony boys' school were accepted into the Junior Holy Name Society on December 11.

Father John Greaves, society moderator, explained the obligations and rules to the members in a sermon delivered before the students in church. After reading the Holy Name pledge, the 12 boys received pins signifying their membership.

The Junior Holy Name Society was organized in 1948. Since its beginning at the boys' school, it has grown to be one of the largest and most active clubs in school. Meetings are held on Fridays preceding the Sundays on which the society meets.

Hui Inua Club Newest UE Unit

KAUNAKAI, Molokai, Dec. 21—Another University Extension club was organized recently with work to be carried on under the name of 'Hui Inua.' Those present at the meeting held at the Community Center were Mrs. Helen Inoué, home demonstration agent; Mrs. Dorcas Inoué, Mrs. Elizabeth Inoué, Mrs. Rosaline Brito, Mrs. Margaret Foster, and Mrs. Clara Sabas.

Officers will be elected at the next meeting of the Hui Inua Club, to be held on Dec. 22 at 8 p. m. at the Community Center.

Junior members join with the senior Holy Name members in their parish and attend the 6:00 Mass, (M-W-F-S-D).

—KUHAKU ON KMYJ DAILY

VALLEY ISLE MOTORS

1938 PLYMOUTH \$40.00

1961 FORD PICKUP TRUCK with radio \$1395.00

1952 MERCURY 4-DR. SEDAN (like new) with mercromatic \$2295.00

VALLEY ISLE MOTORS
MAIN STREET WAILUKU

VALLEY ISLE MOTORS

MAIN STREET WAILUKU

Where to DINE

HOUSE OF AN SUI DANG

CHIEF AN SUI DANG

Maui's Finest and Finest

CHINESE RESTAURANT

Main St. Wailuku Phone 2555

TASTY CRUST BAKERY

Mon. thru Thurs. 5:30 A.M. - 12:30 A.M.

Fri. and Sat. - 24 Hours

Everything Tasty - Tasty Dinners

Tasty Breakfasts - Tasty Lunchees

CORNER

MAIN & MILL STS. PHONE 8102

WAILUKU HOTEL

Coolest Dining Spot in Wailuku

Wailuku Hotel Gardens

Where service is just a little bit better -

Wails Tasty

And atmosphere is ideal

DINE AND DANCE WITH US

SATURDAY NIGHTS

WING SING CHOP SUEY

For "CHOOK" (rice soup) Every Sat. Nite

We also have Kau Chee, Measno pus, popoyan, alyng, every day.

OPEN EVERY MONDAY

Lower Hill St. Ph. 5122

KMVI PROGRAM SCHEDULE 550 ON YOUR RADIO DIAL

SUNDAY, DECEMBER 27, TO SATURDAY, JANUARY 2						
SUNDAY	MONDAY	TUESDAY	WEDNESDAY	THURSDAY	FRIDAY	SATURDAY
MORNING:	MORNING:	MORNING:	MORNING:	MORNING:	MORNING:	MORNING:
6:55 Sign On—National Anthem	4:55 Sign On—National Anthem	4:55 Sign On—National Anthem	4:55 Sign On—National Anthem	4:55 Sign On—National Anthem	4:55 Sign On—National Anthem	4:55 Sign On—National Anthem
7:00 National Radio Patrol, NBC	5:00 ILWU Voice of Labor, AC	5:00 ILWU Voice of Labor, AC	5:00 ILWU Voice of Labor, AC	5:00 ILWU Voice of Labor, AC	5:00 ILWU Voice of Labor, AC	5:00 ILWU Voice of Labor, AC
7:30 Hawaiian Serenade, LS	5:15 Filipino Program, LP	5:15 Filipino Program, LP	5:15 Filipino Program, LP	5:15 Filipino Program, LP	5:15 Filipino Program, LP	5:15 Filipino Program, LP
8:00 Kahi Kahi, LC	5:30 Aluhed Pupule, AS	5:30 Aluhed Pupule, AS	5:30 Aluhed Pupule, AS	5:30 Aluhed Pupule, AS	5:30 Aluhed Pupule, AS	5:30 Aluhed Pupule, AS
8:10 Maui Sports Chatter, LC	(News at 6 am, 6:30 am, 7 am)	(News at 6 am, 6:30 am, 7 am)	(News at 6 am, 6:30 am, 7 am)	(News at 6 am, 6:30 am, 7 am)	(News at 6 am, 6:30 am, 7 am)	(News at 6 am, 6:30 am, 7 am)
8:25 Favorite Chorus, LC	9:00 Morning Devotions, LS	9:00 Morning Devotions, LS	9:00 Morning Devotions, LS	9:00 Morning Devotions, LS	9:00 Morning Devotions, LS	9:00 Morning Devotions, LS
8:30 General Nat'l News Roundup, AC	9:30 Panini Pete, LS	9:30 Panini Pete, LS	9:30 Panini Pete, LS	9:30 Panini Pete, LS	9:30 Panini Pete, LS	9:30 Panini Pete, LS
9:00 The Maui Scene, LC	10:00 Songs of Wisdom, LS	10:00 Songs of Wisdom, LS	10:00 Songs of Wisdom, LS	10:00 Songs of Wisdom, LS	10:00 Songs of Wisdom, LS	10:00 Songs of Wisdom, LS
9:10 Yamato Program, LP	10:15 Break the Bank, NBC	11:00 Break the Bank, NBC	11:00 Break the Bank, NBC	11:00 Break the Bank, NBC	11:00 Break the Bank, NBC	11:00 Break the Bank, NBC
	11:30 Second Chance, NBC	11:45 Dr. Paul, NBC	11:45 Dr. Paul, NBC	11:45 Dr. Paul, NBC	11:45 Dr. Paul, NBC	11:45 Dr. Paul, NBC
	11:45 Dr. Paul, NBC					
AFTERNOON:	AFTERNOON:	AFTERNOON:	AFTERNOON:	AFTERNOON:	AFTERNOON:	AFTERNOON:
12:00 Voices and Events, NBC	12:00 Right to Happiness, NBC	12:00 Right to Happiness, NBC	12:00 Right to Happiness, NBC	12:00 Right to Happiness, NBC	12:00 Right to Happiness, NBC	12:00 Right to Happiness, NBC
12:00 Sunday Serenade, LS	12:15 News, LC	12:15 News, LC	12:15 News, LC	12:15 News, LC	12:15 News, LC	12:15 News, LC
1:30 The Catholic Hour, NBC	12:25 Weather Forecast, LS	12:25 Weather Forecast, LS	12:25 Weather Forecast, LS	12:25 Weather Forecast, LS	12:25 Weather Forecast, LS	12:25 Weather Forecast, LS
2:00 Trinity Parochial Message, LC	12:30 Road of Life, NBC	12:30 Road of Life, NBC	12:30 Road of Life, NBC	12:30 Road of Life, NBC	12:30 Road of Life, NBC	12:30 Road of Life, NBC
2:15 Hour of St. Francis, LS	12:45 Popper Young's Family, NBC	12:45 Popper Young's Family, NBC	12:45 Popper Young's Family, NBC	12:45 Popper Young's Family, NBC	12:45 Popper Young's Family, NBC	12:45 Popper Young's Family, NBC
2:30 NBC Symphony, NBC	1:00 Backstage Wife, NBC	1:00 Backstage Wife, NBC	1:00 Backstage Wife, NBC	1:00 Backstage Wife, NBC	1:00 Backstage Wife, NBC	1:00 Backstage Wife, NBC
3:30 Music from Broadway, LS	1:15 Stella Dallas, NBC	1:15 Stella Dallas, NBC	1:15 Stella Dallas, NBC	1:15 Stella Dallas, NBC	1:15 Stella Dallas, NBC	1:15 Stella Dallas, NBC
4:30 Ave Maria Hour, AS	1:30 Young Widder Brown, NBC	1:45 Women in My House, NBC	1:45 Women in My House, NBC	1:45 Women in My House, NBC	1:45 Women in My House, NBC	1:45 Women in My House, NBC
	1:45 Women in My House, NBC	2:00 It Pays to Be Married, NBC	2:00 It Pays to Be Married, NBC	2:00 It Pays to Be Married, NBC	2:00 It Pays to Be Married, NBC	2:00 It Pays to Be Married, NBC
	2:15 News, AIN	2:25 Musical Interlude, LS	2:25 Musical Interlude, LS	2:25 Musical Interlude, LS	2:25 Musical Interlude, LS	2:25 Musical Interlude, LS
	2:25 Musical Interlude, LS	2:30 Life Can Be Beautiful, NBC	2:30 Life Can Be Beautiful, NBC	2:30 Life Can Be Beautiful, NBC	2:30 Life Can Be Beautiful, NBC	2:30 Life Can Be Beautiful, NBC
	2:40 Music You Want, LS	2:45 Music You Want, LS	2:45 Music You Want, LS	2:45 Music You Want, LS	2:45 Music You Want, LS	2:45 Music You Want, LS
	3:45 Yamato Program, LP	3:45 Yamato Program, LP	3:45 Yamato Program, LP	3:45 Yamato Program, LP	3:45 Yamato Program, LP	3:45 Yamato Program, LP
EVENING:	EVENING:	EVENING:	EVENING:	EVENING:	EVENING:	EVENING:
5:00 Filipino Program, LP	5:00 Today's Hits, LS	5:00 Today's Hits, LS	5:00 Today's Hits, LS	5:00 Today's Hits, LS	5:00 Today's Hits, LS	5:00 Today's Hits, LS
6:00 Voices and Events, NBC	5:30 Fibber McGee and Molly, NBC	5:30 Fibber McGee and Molly, NBC	5:30 Fibber McGee and Molly, NBC	5:30 Fibber McGee and Molly, NBC	5:30 Fibber McGee and Molly, NBC	5:30 Fibber McGee and Molly, NBC
7:00 Playlets Program, LC	5:45 Accot on Melody, LS	5:45 Accot on Melody, LS	5:45 Accot on Melody, LS	5:45 Accot on Melody, LS	5:45 Accot on Melody, LS	5:45 Accot on Melody, LS
7:30 Dinah, NBC	5:55 Show Tune Time, LC	5:55 Show Tune Time, LC	5:55 Show Tune Time, LC	5:55 Show Tune Time, LC	5:55 Show Tune Time, LC	5:55 Show Tune Time, LC
10:30 NBC Star Playhouse, NBC	6:00 Evening News, LC	6:00 Evening News, LC	6:00 Evening News, LC	6:00 Evening News, LC	6:00 Evening News, LC	6:00 Evening News, LC
11:00 Sign Off—National Anthem	6:15 Diner Dance, LS	6:15 Diner Dance, LS	6:15 Diner Dance, LS	6:15 Diner Dance, LS	6:15 Diner Dance, LS	6:15 Diner Dance, LS
	6:30 Lost and Found Column of the Air, LC	6:30 Lost and Found Column of the Air, LC	6:30 Lost and Found Column of the Air, LC	6:30 Lost and Found Column of the Air, LC	6:30 Lost and Found Column of the Air, LC	6:30 Lost and Found Column of the Air, LC
	6:45 Dinner Dance, LS	6:45 Dinner Dance, LS	6:45 Dinner Dance, LS	6:45 Dinner Dance, LS	6:45 Dinner Dance, LS	6:45 Dinner Dance, LS
	6:45 ILWU News Commentary, AC	6:45 ILWU News Commentary, AC	6:45 ILWU News Commentary, AC	6:45 ILWU News Commentary, AC	6:45 ILWU News Commentary, AC	6:45 ILWU News Commentary, AC
	7:00 Hawaii and the World Today, AC	7:00 Hawaii and the World Today, AC	7:00 Hawaii and the World Today, AC	7:00 Hawaii and the World Today, AC	7:00 Hawaii and the World Today, AC	7:00 Hawaii and the World Today, AC
	7:15 Inua Reports, AC	7:15 Inua Reports, AC	7:15 Inua Reports, AC	7:15 Inua Reports, AC	7:15 Inua Reports, AC	7:15 Inua Reports, AC
	7:30 Theater Royal, NBC	7:30 Theater Royal, NBC	7:30 Theater Royal, NBC	7:30 Theater Royal, NBC	7:30 Theater Royal, NBC	7:30 Theater Royal, NBC
	8:00 Voice of Firestone, NBC	8:00 Voice of Firestone, NBC	8:00 Voice of Firestone, NBC	8:00 Voice of Firestone, NBC	8:00 Voice of Firestone, NBC	8:00 Voice of Firestone, NBC
	8:30 Last Man Out, NBC	8:30 Last Man Out, NBC	8:30 Last Man Out, NBC	8:30 Last Man Out, NBC	8:30 Last Man Out, NBC	8:30 Last Man Out, NBC
	9:00 Meet the Press, NBC	9:00 Meet the Press, NBC	9:00 Meet the Press, NBC	9:00 Meet the Press, NBC	9:00 Meet the Press, NBC	9:00 Meet the Press, NBC
	9:30 Hawaii Calls, LS	9:30 Hawaii Calls, LS	9:30 Hawaii Calls, LS	9:30 Hawaii Calls, LS	9:30 Hawaii Calls, LS	9:30 Hawaii Calls, LS
	10:00 Stroke of Fate, NBC	10:00 AM News, AIN	10:00 AM News, AIN	10:00 AM News, AIN	10:00 AM News, AIN	10:00 AM News, AIN
	10:30 Radio's Time, LS	10:05 Crockett Show, AS	10:05 Crockett Show, AS	10:05 Crockett Show, AS	10:05 Crockett Show, AS	10:05 Crockett Show, AS
	10:30 Radio's Time, LS	10:30 Radio's Time, LS	10:30 Radio's Time, LS	10:30 Radio's Time, LS	10:30 Radio's Time, LS	10:30 Radio's Time, LS
	11:00 Sign Off—National Anthem	11:00 Sign Off—National Anthem	11:00 Sign Off—National Anthem	11:00 Sign Off—National Anthem	11:00 Sign Off—National Anthem	11:00 Sign Off—National Anthem

MAUI NEWS
 PUBLISHED EVERY WEDNESDAY AND SATURDAY
 By The
MAUI PUBLISHING COMPANY, LTD.
 WAILUKU, COUNTY OF MAUI, T. H., U.S.A.
 OPERATING RADIO KMVI

1900 — OUR 53rd YEAR — 1953

BEZA J. CHANE
 EDITOR AND MANAGER

EARL I. TANAKA
 NEWS EDITOR

NATIONAL ADVERTISING REPRESENTATIVES
 S. S. KOFFE & COMPANY, INC.
 International Building — 57th Ave., New York
 DON PICKENS
 15 E. 14th St., San Francisco 4, Calif.
 MEMBER: California Newspaper Publishers Assn., Inc.
 United Press Association

SATURDAY DECEMBER 26, 1953

WOMEN ON JURIES SET AN EXAMPLE

The first year of jury service for women is drawing to a close and in retrospect it may be rightly said that, if anything, the standards of jury service have been considerably raised.

One could not fail to notice how faithfully and diligently the women of the juries carried out their duties and, certainly, the presence of ladies in the courtrooms of the Territory has had a salient effect upon the conduct of members of the bar, many of whom have acted more in keeping with a barrister than before the bar of justice. Not so this year. The ladies apparently have succeeded where the threat of contempt of court has failed.

Another point that male members called to jury service might well remember the next time they receive a summons for jury service.

Requests for excuses from service by women were rare indeed and in almost every instance, only the most stringent hardships were given as reasons for excuse. Judges throughout the Territory appear to be in agreement on this feature of the first year of jury service for the fair sex. They recognized their duty as citizens and they did their duty without attempting to escape. It isn't necessary to mention here that requests for excuse were rather frequent in past years, and some of the alibis were pretty threadbare, but in 1953 apparently the men were shamed into doing their duty by the apt exemplification of loyalty displayed by the ladies.

All in all, Hawaii can feel that the calibre of justice has been considerably elevated by the presence of the ladies on jury panels.

SHOW BUSINESS'S BIGGEST NAMES ON MISC

NOBLE WORK, NOBLY DONE

Many people who toiled uselessly in the 1953 Community Chest campaign rejoiced last week when the clean-up drive went over the top and Maui became the only island to have surpassed its welfare quota.

Most of all there is Kitty Vincent, who chairmanned the drive with the full force of her magnetic personality, and then, there is Bill Davis, who picked up the reins for the clean-up work and literally cleaned up the Valley Isle. And there are many, many others who did noble work during the long, uphill two months.

Congratulations all around. We hope that this year marks the beginning of an era when Maui, each year, will meet the quota and keep the commendable activities of the Chest going in high gear.

"MEET THE PRESS" ON MAUI

ONE RAIN DOESN'T END A DROUGHT

Rains in the ditch country and the spell of Kona weather that stirred old memories of good, old-fashioned Kona storms, do not mean that our prolonged period of drought is ended, nor will a real, heavy rain, when it does fall along the Western slopes of Haleakala, bring permanent relief.

For nearly two years, Maui has been drying up, her fertile lands are parched and scorched and the soil, way down deep, is powder-dry.

According to water authorities it will require several months of normal rainfall to restore the Maui underground water basin to its old-time level. The soil must absorb millions of gallons before it will have fully recovered from the effects of nearly two years of drought.

So, it behooves everyone to continue to practice water conservation conscientiously, to watch for leaky pipe fittings and faucets and to refrain from an over-use of the precious liquid.

It will be well for our local ranch and agriculture leaders to remind the United States agricultural and conservation service that one rain does not end a drought so that a false sense of relief will not lead to a curtailment of emergency aid that the government has been giving.

Maui is still a long way off the pace insofar as farm areas are concerned in her rich up-country ranch and farm areas are concerned.

SHOW BUSINESS'S BIGGEST NAMES ON MISC

THE CASES ARE DIFFERENT

Complaints that goat hunting permits are being issued by the local board of agriculture and forestry while pheasant hunting is still barred because of the high potential of fire in the tinder-dry forest lands bear a logical appearance at first glance and particularly to persons who are not acquainted with conditions in each of the areas.

The fact is that goat hunting is carried on over the bare, rough lava section of Haleakala where scarcely a blade of grass will grow. A gallon of gasoline poured out on the a-ba and then ignited would do no more than to burn itself out. In the pheasant country there is grass and forest, all of it parched and seared from the nearly two-year-long drought. A glowing match dropped in this area could readily start a conflagration that would wipe out the entire mountain-side.

The cases are quite different and those who are making the complaints would do well to investigate before levelling criticism at the efficiently administered agriculture and forestry office here on Maui.

PRAYER FOR THE DAY
 O Thou who are the father of all mankind, we thank Thee for Thy great family across the earth. We bless and praise Thee for the truth that makes us free, and the truth that when we honor Thee our Father, or well as our very parents, our days indeed are long and happy upon the earth. Teach us each day, O God, the way of Thy justice, and we shall keep them unto the end.—THE REVEREND ABRAHAM AKAKA.

PRINCETON, N.J., Dec. 24—The time honored saying, "Marriage is a partnership," is validated by the latest United States Poll findings which show that more than three out of every four men across the nation help with the housework.

In some parts of the world, domestic duties are traditionally the sole concern of women, but the American pattern of life has always called for masculine assistance in performing domestic chores. The response by men of different age groups to the question, "Do you ever help with the housework?" discloses an interesting pattern. Younger men—those in the 21-29 year old bracket—help more with the housework than do men between 30 and 44 years of age; those 45 years and older.

Surprise For Friend Wife Husband Says He Is A Help!

Many reasons for this pattern suggest themselves. One undoubtedly lies in the absence of children old enough to help with the housework in some families. Lack of income to provide labor saving devices or outside help may be another factor among younger married couples. The frequency with which men say they help with the housework may come as a surprise to many wives.

Of every ten men in the nation, about three say they help out every day; three say they help out one or more times a week; two say they help out occasionally or when necessary, and two say they don't help.

Since next week is the time for New Year's resolutions, America's housewives might resolve this: to try to get their men folk who aren't minded to help out at least once a week—the average man's contribution.

When United States Poll staff reporters asked a representative cross-section of men all over the nation:

These were the results:

Total U. S.	78%	17%	1%
21-29 years old	78%	17%	1%
30-44 years old	80%	15%	2%
45 years and older	82%	20%	2%

When the 78% of the men across the nation who said they help with the housework were asked:

"About how often do you do this?"

The replies were:

Daily or every day, nearly every day	28%
Two or three times a week; several times a week	10%
Weekly—at least once a week	17%
Occasionally or once in a while	15%
Whenever necessary; when needed	5%

(Figures add to 78%—the total of those who say they help with the housework.)

The Maui News presents the reports of the United States Poll exclusively in this area.

The service is operated by the Princeton Research Service Staff of trained reporters. (Copyright, 1953, by Princeton Research Service.)

LISTEN AMERICANS!

Let it be taught in schools, in seminaries, and in colleges; let it be written in primers, in spelling books and in almanacs; let it be preached from the pulpits, proclaimed in legislative halls, and enforced in courts of justice. And in short, let it be the national religion of the nation. Abraham Lincoln said that. He was speaking of the United States Constitution. Lincoln also said: "As the patriots of '76 did to the support of the Declaration of Independence, so to the support of the Constitution, let every American pledge his life, his property, and his sacred honor."

Lincoln knew, as well as any man of history, that the great founding documents of America breathed the spirit of Christianity and provided the framework for the nation's strength and the individual's freedom. Benjamin Franklin, who helped frame the Constitution, had known this too. When the work on the Constitution had been finished he said to the Convention delegates: "You have a Republic—if you can keep it!"

BILL OF RIGHTS
 Thomas Jefferson, who wrote the Declaration of Independence, revered the Constitution, though he had no part in its writing. He helped prepare the Bill of Rights, but he was not one of the men who were attached two years after the Constitution itself was ratified. And why was the Bill of Rights necessary? Many of Jefferson's colleagues asked that question.

Jefferson replied that although most of the freedoms set forth in detail in the proposed amendments were written into the Constitution itself in general terms, he felt they should be spelled out and re-emphasized. The writers of the Constitution had noted that each state had its own Bill of Rights; and that these guaranteed all the freedoms. But Jefferson and others pressed for the amendments. They were acceptable, of course, to everybody—including the writers of the Constitution—Madison, Washington, Franklin, Wilson and the others. All were quite willing to emphasize and re-emphasize the nature of individual freedom within the nation.

SPELLING OUT FREEDOM
 Article I (of the Bill of Rights) specifically sets forth freedom of worship, of speech, of press, and freedom to assemble and to petition for redress of grievances. Article II acknowledges the right of the people to keep and bear arms. Article III acknowledges the sanctity of private property—prohibits the quartering of soldiers in any house without consent of the owners. Article IV details the rights of citizens to be secure in their person, houses, papers, and effects against unreasonable searches and seizures.

Article V provides that no person shall be arrested for a crime without a prior presentation or indictment by a Grand Jury; that no person shall be twice placed in jeopardy for the same offense; nor shall anyone be compelled in a criminal case to be a witness against himself. Article V also re-states the sanctity of private property—declaring that a person cannot be "deprived of life, liberty, or property without due process of law; nor shall private property be taken for public use without just compensation."

FOR THE ACCUSED
 Article VI protects the accused. It guarantees the right to public trial; the right to information on the charges; the accusation; the right to be confronted with the accusers, to subpoena defense witnesses, and to have access to counsel. Article VII provides similar rights in civil cases according to the rules of the common law. Article VIII reads the bill of rights and prohibits excessive fines and cruel and unusual punishments.

Article IX makes it clear that the Constitution points to certain rights specifically but that in so doing it does not deny or disparage other rights retained by the people. Article X is the "States' Rights" amendment. It says: "The powers not delegated to the United States by the Constitution, nor prohibited by it to the States, are reserved to the States respectively, or to the people." This Bill of Rights spells out some important freedoms. But they cannot arrive unless the citizens enjoying them accept the individual responsibilities which are the price of freedom.

DOMESTIC ANIMALS CORNER
 WITH
Helen Elmore

PAT—THE LINNET
(A biography, in several parts) CHAPTER TWO

The inclusion of the bird in family life was something akin to raising quinquets. The featherless one was fed every hour. Moreover, it soon became apparent that milk was not sufficient for its needs. What to feed it was the problem.

"It must be the young of the mocking birds," his saviors reasoned, "but we cannot force out of doors for its natural sustenance."

A can of dog food stood upon a kitchen counter. The label promised that its contents were nourishing, complete. With one breath, the searers cried: "Let's try THAT!"

The can was opened. With a small tweezers, a bit of dog food was put into the bird's mouth, pushed carefully down the gullet. This process was repeated, several times. From that day, upon a diet of warm skim milk and canned dog food, the bird grew in size and gained in strength. The first sign of plumage showed itself in December, and after a little more actually, July quills appeared and, from the softness of feathers, but always, except when eating, Pat, as he was now called, snuggled quietly beneath his cotton and cloth blanket, and slept. And, it should be told, that we may leave of the latest cleanings of the bird, even the newly-born, that when one part of his paper towel form was soiled, Pat crept to the progress which was not soiled. Often a fresh towel was arranged, for him.

Pat's progress became a family ritual. If one person could not feed him, another took charge. If the whole household was to be absent, an employee took Pat, basket, paper towels, blanket and all, to her own home a few miles away and fed him until his owners returned.

When Pat was about four weeks old and smoothly feathered, he began to move about the environs of his basket in lively fashion. The fear that he might get out and be caught by Peko, the cat, or by two pet Dachshunds, seemed to be a little more actually, July quills appeared and, from the softness of feathers, but always, except when eating, Pat, as he was now called, snuggled quietly beneath his cotton and cloth blanket, and slept. And, it should be told, that we may leave of the latest cleanings of the bird, even the newly-born, that when one part of his paper towel form was soiled, Pat crept to the progress which was not soiled. Often a fresh towel was arranged, for him.

Pat sensed his change of habitat. Hopping over the base of the box, he examined it well. Then, suddenly, looking upward, he beheld his tree. He reached its lowest branch, the higher one and, finally the top. At last Maui had again proved her worth.

Pat sensed his change of habitat. Hopping over the base of the box, he examined it well. Then, suddenly, looking upward, he beheld his tree. He reached its lowest branch, the higher one and, finally the top. At last Maui had again proved her worth.

Pat sensed his change of habitat. Hopping over the base of the box, he examined it well. Then, suddenly, looking upward, he beheld his tree. He reached its lowest branch, the higher one and, finally the top. At last Maui had again proved her worth.

PEOPLE'S

AND A HEARTY THANKS TO YOU, KITTY
 As my last official act of the 1954 Community Chest Drive, I am requesting that you publish the following letter. At the same time I wish to express my appreciation to you and the staff of the Maui News and KMVI for the excellent cooperation you have given to the campaign, for publicity is a potent force in any civic project.

As far as I know we are the first and only Community Chest Drive in the Territory to have gone over the top yet this year and I am sure you will delight to hear that Maui has again proved her worth.

The joy of Christmas on our Valley Isle can be heightened by the fact that your Community Chest Drive has made some over the goal needed to bring comfort and gladness to all the individuals served by the Red Feather agencies. You men and women who have given gladly of your time, energy and enthusiasm to put on the campaign and you who have been so gladly and generously of your financial resources to support the work of the agencies can enjoy the satisfaction of knowing that you have brought your good will to earth this Yuletide season!

I wish I might thank each of you for the help in giving the Drive over the top. I have written literally hundreds of letters to those of you who have served as chairmen, solicitors and assistants but thousands of you have contributed whom I now thank for your present and future support of this most democratic form of community service ever put into practice in the world.

Mahalo and Mele Kalikimaka!
 KATHARINE O. VINCENT, Chairman,
 THE COUNTRY'S BEST PROGRAM

BACK SEAT FOR JAMES SKINNER

In reading my friend James Skinner Watson's letter, from which he attacked the pulpits of Christendom for worshipping false gods on Saturdays and Sundays, when they should be worshipping the True God every day and the Lord Jesus Christ every hour, I was surprised to find more than fifty churches to save souls from "Eternal Blaise," I would say, "What a Challenge!"

Do you know the inferior questions, "What is the soul?" "Where does it dwell in the body?" "How and when did it get there?" "DUMB," he asserted that these are intelligent questions!

The soul of Lazarus is dead according to Mr. Watson's Philosophy. "Christ would not have waltz if Lazarus were in heaven." "Christ knows of no fiery abode in the Father's boundless universe." "Christ did not believe in the immortality of the human or soul."

Mr. James Skinner Watson not only attacked churches but, more especially attacked the "REVERENDS" of these churches, and it is nothing but proper and justifiable to these "REVERENDS" of whom I am one of them for Mr. James Skinner Watson to answer his challenge. What human authority has he in attacking these "REVERENDS" and to answer these questions himself which he so boldly wrote to the "Maui News," Dec. 9, 1953. If Mr. James Skinner Watson cannot answer his own questions logically in accordance with the Science of Logics, I would ask him kindly to take the BACK SEAT and retire. Let us hear from you, Mr. Watson, may the good Lord bless you.

REV. DAVID K. PHIMAN, A Hebrew-Egyptian Theologist,
 331-Hiwaio St., Honolulu, T. H.
 "MEET THE PRESS" ON MAUI

SENATOR PURTELL ON STATEHOOD

In a newsletter to the people of his state on December 9, Senator W. A. Purtell of Connecticut, writes to the Maui News, "I am writing to you in connection with my plan to introduce legislation for Statehood for Hawaii. I wish again to emphasize that the platforms of both the Republican and Democratic parties advocated Statehood for Hawaii; President Eisenhower has recommended that it be granted immediately, and I have repeatedly declared my position in favor of Statehood for Hawaii."

for the investment minded . . .
MUTUAL FUNDS
 provide diversification and continuous supervision at very low commission dollars. Whether your investment is large or small your shares give you an ownership interest in a broad range of selected securities—because your income is derived from many sources.

E. P. WICK & CO.
 INVESTMENT SECURITIES
 CENTRAL AVE. • WAILUKU
 PHONE 2408



CONSIDERATION FOR HOUSEWIFE JURORS

Since the Fair Sex gained the right formerly denied them in Hawaii, that of serving on juries, trials proceed promptly each day in the Second Circuit Court, presided over by Judge William B. Brown. The reason being so that the housewife jurors will have time to prepare dinner for their families.

CONSTRUCTION PUKA ATTRACTS CROWDS—"Gee, just like Mainland!" That is the way the Garbure Construction Association are expressing themselves over the steam shovel and trucks which are excavating the dirt for the basement for the new Robinson Building at the corner of Market and Vineyard Streets, Wailuku. Yes, it does seem more like the Mainland to see a basement being dug under a building on the Valley Isle, together with a temporary board fence, which has gone up around the site to remain until the building starts to mushroom up out of the earth. Nothing seems to be a bigger magnet in any city in the world than does a steam shovel excavating Mother Earth for a new building.

QUESTIONS ON GARBAGE COLLECTION ORDINANCES—Why is it that the County Fathers voted to ask the County attorney to draw up an amendment to the garbage collection fee ordinance to exempt non-profit organizations while, on the other hand, they bill their own County agencies for garbage collection service? How come some districts were billed for the service right after the first three months of operation, while other districts have never received a bill and yet the ordinance has now been in effect six months, less five days?

PICTURE ONE SELDOM SEEN—Despite the healthy rivalry between Wailuku and Kahului for business, The Maui Scene saw a picture one seldom sees just the other day . . . that of Kazuo Hagi, president of the Wailuku Merchants' Association, and Daga Kamitaka, president of the Kahului Merchants' Association, sitting down together in Craigs' enjoying coffee.

The Maui Scene spent 27 years in the midst of one of the Mainland's biggest inter-city rivalries, that between Mienapolis and St. Paul, which was a bitter but healthy one on the athletic field as well as between newspapers and business. And yet the rivalry between Mienapolis and the County Seat reminds us of that "Minnie-Paul" rivalry. Business located in one of the cities have opened branches in the other. Many people own their homes in one of the cities and work in the other. Except for the downtown district, Mienapolis have grown together with the County Seat. It is just the way Wailuku and Kahului are gradually growing together along Kaahumanu Avenue. And, mark these words, one of these days a bus line will be located near the General Hospital Memorial Hospital, where there is plenty of room to grow. It will replace the present outgrown County buildings in their present location and the new fire station should have been the first to be located in this location.

JUST A SUGGESTION—The County has passed a new ordinance making it unlawful to throw trash and bottles along the highways and on the street. How about the County looking by putting attractive trash cans along the highways and in our towns, as they do for cleanliness in most cities where the public can drop rubbish and bits of paper which might be tossed out? Respectfully referred to Supervisor Bob Shimada's public works committee for approval. Thanks, Bob.

NEWS OF YESTERYEAR

50 YEARS AGO
 Dec. 29, 1903—George Dunn of Leihana was in town Monday, in attendance on the meeting of the Republican District Committee. Superintendent Filler of the Kahului Railroad Co. generously entertained the employees of the Republic Electric Company for Christmas day and spent the time with Mr. and Mrs. H. M. Wells.

40 YEARS AGO
 Dec. 27, 1913—Judge McKay and Mrs. McKay took a trip to Hailan for Christmas day and spent the time with Mr. and Mrs. H. M. Wells.

30 YEARS AGO
 Dec. 27, 1923—Talia Camber, Grade 8 pupil at the Makawao school, is winner of the Sportsmanship-Citizenship essay contest sponsored by Alexander House Settlement.

20 YEARS AGO
 Dec. 25, 1933—Maui Rotarians were hosts to servicemen on the island Wednesday at their annual Christmas meeting held at the Maui County Club.

10 YEARS AGO
 Dec. 25, 1943—Maui Rotarians were hosts to servicemen on the island Wednesday at their annual Christmas meeting held at the Maui County Club.

5 YEARS AGO
 Dec. 24, 1948—Christmas Eve will be observed tonight on Maui by festive events for young and old, starting with Christmas tree celebration at 7:30 in the evening and ending with dances that are expected to continue to the wee small hours of the morning.

1 YEAR AGO
 Dec. 24, 1952—Christmas Eve will be observed tonight on Maui by festive events for young and old, starting with Christmas tree celebration at 7:30 in the evening and ending with dances that are expected to continue to the wee small hours of the morning.

Maui Associates Ltd says It's a fact

Explanation to last Saturday's "Fact"
EDISON DID NOT INVENT THE FIRST ELECTRIC LAMP
 Explanation to appear next Saturday
 Follow "It's a fact" here every Saturday

WE OFFER FOR SALE

Business Lot on Vineyard St. Below Market.
 A Good Residential Corner Lot, Paukukolo, Terms.
 A 2.07 Acre Parcel in Kokomo. Excellent for Avocado and Mango Trees. Good House Site, Easy Terms.
 Residential Lot, Corner Good View-Kahi-Nohs. Farm & Grazing Land in Kula.

55 N CHURCH ST
 Telephone 946
ASSOCIATES
 RALPH N. WILLIAMS, Manager
 REAL ESTATE • INSURANCE • C.C. LOAN