

MPAC

MANAGEMENT PLANNING & ADMINISTRATION CONSULTANTS, INC.

HO'OLA LAHUI HAWAII

WEST KAUAI HEALTH NEEDS ASSESSMENT

FINAL REPORT

January 1988

Ho'ola Lahui Hawaii

West Kauai Health Needs Assessment

Final Report

by

MPAC, Inc.

January 1988

NOTE: This study was commissioned by Ho'ola Lahui Hawaii, a private, non-profit, community-based organization. No part of this study may be quoted, reproduced, or distributed without prior permission of the Board of Directors of Ho'ola Lahui Hawaii.

Survey Conducted and Final Report

Prepared by MPAC Consultants

Jill Kouchi

Dr. Ross Prizzia

Dr. Linda Nishigaya

and Interviewers

May Adams

Emmaline Ihu

Bernice Elama Kanahale

Leah Pereira

Robert Kanahale

Eliza Kelley

Ala Nizo

HO'OLA LAHUI HAWAII BOARD MEMBERS 1986 -1988

Dr. Wayne Fukino, President 1988
Dr. Lambert LeeLoy, President 1987
Dr. Herbert Kama Yim, President 1986
Dr. Hiram Young, Survey Coordinator
Ms. Elei Beniamina, Treasurer
Ms. Emmaline Ihu
Ms. Lauren Kanna
Ms. Aletha Kaohi
Mr. Bruce Robinson
Ms. Karen Taketa
Dr. Patrick Akiu

TABLE OF CONTENTS

List of Tables

List of Appendices

I.	Introduction	1
II.	Methodology	3
	A. Sampling	3
	B. Interview Process	5
III.	Survey Results	7
	A. Health Profile: Bio-Data	7
	B. Awareness/Use of Ho'ola Lahui Services	11
	C. Health Interests/Concerns	13
	D. Sources Consulted for Health Problems	15
	E. Medical History	15
	F. The Family Tree	19
IV.	Discussion	20
V.	Tables	
VI.	Appendices	

List of Tables

Table 1	Hawaiian Blood Quantum
Table 1a	Hawaiian Blood Quantum by Age
Table 2	Other Ethnicity
Table 3	Marital Status
Table 4	Residence - Five Years Ago
Table 5	Total Income - 1986
Table 6	Total Family Size
Table 7	Number of Living Children
Table 8	Person(s) Working in Household
Table 9	Level of Education
Table 9a	Level of Education by Age
Table 10	Highest Grade Reached
Table 11	Awareness of Ho'ola Lahui Hawaii Services
Table 11a	Awareness of Ho'ola Lahui Hawaii by Precinct
Table 12	Health Interests/Concerns
Table 13	Sources Consulted for Health Problems
Table 14	Doctor's Care
Table 15	Prenatal Care
Table 16	Prenatal Care by Age
Table 17	Specific Illnesses

List of Appendices

Appendix A	Questionnaire
Appendix B	Response Rate Table
Appendix C	Interviewer Training Handbook
Appendix D	Introductory Letter
Appendix E	Follow-Up Letter
Appendix F	Final Thank You Letter

INTRODUCTION

Ho'ola Lahui Hawaii is a group of individuals representing the West Kauai communities. Members of Ho'ola Lahui Hawaii come from the medical as well as the lay community. The focus of the group is on the health needs of the native Hawaiian population of West Kauai.

A growing concern is emerging regarding the health patterns of the native Hawaiian population. Longevity has also recently become an issue.

The Ho'ola Lahui Hawaii Board of Directors decided to document information on health needs of the target population of native Hawaiians of West Kauai in order to substantiate assumptions and address particular health concerns. The Board decided that a survey of native Hawaiians in West Kauai would assist the development of an information base on health needs and would further the creation of programs to meet priority health needs of native Hawaiians.

MPAC (Management Planning & Administration Consultants) was selected to conduct the survey. The survey conducted gathered information on basic health needs, general demographic information, and health problems of the respondent and family members of Hawaiian descent. The data collected are entirely from persons with Hawaiian ancestry from the West Kauai area (Koloa to the west to include Mana and Niihau).

The primary objective of this study was to obtain a

health profile of each respondent. The usual demographic information (age, sex, blood quantum, etc.) was augmented with particular data regarding health such as incidence of illnesses or medical condition and medical history. A unique part of the interview was the family tree which attempted to obtain information on all native Hawaiian or part Hawaiian family members of the respondent. The medical information requested was basically the type of medical ailment experienced by the members of the respondent's family two generations past and one generation future. Another aspect of the study was to determine the specific health services of interest to the native Hawaiians. (For more information regarding interest in health services, see Questionnaire, Appendix A).

Results of this study outline the health profile of the native Hawaiians and part Hawaiians of West Kauai. These data identify health concerns and interests that could prove useful in designing and implementing community health programs.

METHODOLOGY

MPAC outlined the scope of the survey and basic information deemed necessary with the Ho'ola Lahui Board. The Board also assisted in the formulation of questions to be included in the survey. Upon completion of the development of the survey questions, a pilot test of the questionnaire was conducted on people of various age groups and varying percentages of Hawaiian blood. Face-to-face test interviews were conducted.

After the interviews were completed with each respondent, the questions were reviewed with each person to determine whether any question caused confusion or required clarification that was too extensive. Upon completion of the pilot test of the questionnaire and subsequent review by the Board members of Ho'ola Lahui Hawaii, the questionnaire was finalized.

Sampling

The target population, native Hawaiians and part Hawaiians of West Kauai, was identified and methods of compiling a complete list of them were reviewed. Several firms identified employees who were native Hawaiian or part Hawaiian. Along with the Office of Hawaiian Affairs voter registration list, a comprehensive list of native Hawaiians and part Hawaiians were identified which totaled 1,337 individuals.

It was then decided that a random selection of twenty percent (20%) of the total group would be identified from each precinct to obtain a sampling from the entire West Kauai native Hawaiian and part Hawaiian population. Information was handled by precinct to better identify common health concerns/needs of the specific community which might later on be useful in developing programs particularly suited to that area.

The review of the survey questions and the characteristics of the native Hawaiians to be interviewed rendered the decision that the most effective manner to obtain the desired information would be in a face-to-face interview unless the respondent objected or requested a telephone interview.

The entire list of names was then randomly sorted. The first twenty percent of each precinct (1 through 8, Niihau through Koloa respectively) was then selected for interview. Understandably, people move, do not want to be interviewed, or may just be hard to reach. Therefore, it was decided that a time limit would be set after which a name would continually be added from the original random sort whenever a name from the initial twenty percent was deleted. For a period of two months the list was continually replenished with new names from the original random sort until the quota set for each precinct was approximated.

A total number of two hundred and nine (209) individuals was interviewed. This represents 16% of the West Kauai

native Hawaiian and part Hawaiian population registered with OHA. However, in view of the original sample of three hundred ten (310) individuals identified, this represents a 67% response rate and a 33% non-response rate (caused by moving, refusal to answer, unable to locate, unable to contact after three attempts). A response rate table reflects the area or precinct that the respondents represent. (See Appendix B)

Interview Process

The need for sensitive interviewers was considered crucial and with the help of the Ho'ola Lahui Hawaii Board, MPAC recruited appropriate people from the West Kauai communities. Several Hawaiian speaking residents were identified and approached. The group of six individuals finally hired to conduct the face-to-face interviews were all native Hawaiian or part Hawaiian, three of whom had fluent knowledge and use of the Hawaiian language.

The interviewers all received training and role-played interviews to practice and get the feel of the questionnaire. A special training handbook was provided for each interviewer. (See copy of Interviewer Training Handbook, Appendix C) The list of names gathered for the sample was then assigned to each interviewer. All interviewers worked cooperatively to attempt to contact all of the respondents and obtain an interview. Meetings were held every other week with interviewers to collect completed questionnaires and

review questions/concerns. Whenever a potential respondent could not be located or refused to be interviewed, another name from the same precinct from the original random list was taken. The attempt to obtain twenty percent from each precinct continued for two months (July through August). The interviewers were then given a final month to contact the remaining names and to attempt to get a completed interview.

Prior to the initial attempts to contact the potential respondents, an introductory letter (See Appendix D) was sent to each one. Subsequent letters were sent to those who could not be contacted (See Appendix E). A final thank you letter (See Appendix F) was sent upon completion of the interview.

SURVEY RESULTS

The survey results are presented in standard form with

1. data reported by percentages and raw number (N).
2. percentages are rounded off to the nearest whole percent.
3. percentages should total 100%. When they do not, this is accounted for by the "no response" factor.
4. When more than one choice can be selected for a particular question, raw numbers not percentages are generally reported.

All data were entered into a computer to obtain tabulation read-outs by question. The family tree data required manual tabulation due to large number of ailments listed by respondents.

HEALTH PROFILE: BIO-DATA

Sex

Fifty-six percent (56%) or 117 respondents of the survey was female. Forty-four percent (44%) or 92 respondents of the survey was male.

Age

The age range of the respondents was from eighteen (18)

through eighty-six (86). The breakdown was as follows:

- a) below 20 - 3% (N=6)
- b) 20 to 29 - 19% (N=39)
- c) 30 to 39 - 28% (N=58)
- d) 40 to 49 - 23% (N=49)
- e) 50 to 59 - 13% (N=27)
- f) 60 to 69 - 10% (N=21)
- g) 70 to 79 - 3% (N=7)
- h) 80+ - 1% (N=2)

Hawaiian Blood Quantum and Other Racial /Ethnic Extraction

Of the total respondents, 21% (N=43) claimed to be 100% Hawaiian. Fourteen percent (14% or N=29) said they were 75-99% Hawaiian. Thirty-two percent (32% or N=67) said they were 50-74% Hawaiian. Twenty-six percent (26% or N=55) reported they were 25-49% Hawaiian; and 7% (N=15) claimed to be less than 25% Hawaiian. (See TABLE 1)

Another way of looking at the data determined that of the total respondents, 67% claimed to be 50% or more Hawaiian, while 33% said they were 49% or less Hawaiian.

The respondents were asked to identify what other ancestry (racial/ethnic background) in addition to Hawaiian they had the most of. Thirty-nine percent (39% or N=65) said Caucasian. Twenty percent (20% or N=34) said Chinese. Another 20% (N=34) claimed Japanese. Thirteen percent

(13% or N=21) reported Filipino, and 7% (N=12) said "other" (Korean, Spanish, Puerto Rican). (See TABLE 2)

Marital Status

The largest number of respondents, 69% (N=144), were married. This was followed by 18% (N=37) who reported they had never been married. Another 9% (N=18) were widowed ("other"). Also, 4% (N=8) said they were divorced. One reported being separated and one did not respond. (See TABLE 3)

Residence - Five Years Ago

There was 67% (N=141) of the respondents who have resided at their present address for the past five years. Another 22% (N=45) has resided on the same island, but in different areas within the past five years. Still another 9% (N=18) has moved from within the state within the past five years, and only 1% (N=3) has moved from somewhere out of the state within the past five years. (See TABLE 4)

Total Income - 1986

Almost half (48% or N=100) of the respondents made less than \$12,000 in 1986. Another 36% (N=75) made from \$12,000 to \$29,999, while 14% (N=30) made over \$30,000. (See TABLE 5)

Total Family Size

Respondents were asked to report total family size which included related adults and children living with them. The numbers reported ranged from 1 to 16. (See TABLE 6) For the total respondents, the average number in the household was 5.

It was determined that 65% of the respondents lived in households with family size of 5 or less and 33% lived in households with family size of 6 or more.

Number of Living Children

In response to the question asking how many living children the respondent had, 15% (N=32) reported having no children. Fifty percent (50% or N=105) had 3 or fewer children. Twenty-four percent (24% or N=50) had 4 or 5 or 6 children. Six percent (6% or N=12) had seven or more children. There was a higher than usual no response rate of 5% (N=10) for this question. (See TABLE 7)

Employment

In response to the question asking for the number of working persons in the family living with the respondent (including respondent), 17% (N=36) reported a household without an employed person. The other 83% (N=173) had at

least one or more persons in the household who was employed.

(See TABLE 8)

Education

The educational level ranged from below seventh grade to a master's degree. Thirty-five percent (35% or N=74) reported receiving no diploma, degree, or certificate. Fifty percent (50% or N=105) said they received a high school diploma. Nine percent (9% or N=19) said they received an Associate of Arts (AA) degree. Four percent (4% or N=8) reported they had a bachelor's degree and 1% (N=2) said they had a Master's (M.A.) degree. (See TABLES 9 and 10)

AWARENESS/USE OF HO'OLA LAHUI HAWAII SERVICES

Fifteen percent (15% or N=32) of the respondents was aware of Ho'ola Lahui Hawaii and used its services. Twenty-nine percent (29% or N=61) heard of Ho'ola Lahui Hawaii's programs but never used or participated in any of its programs. This means that of the total number of respondents, 44% reported awareness of Ho'ola Lahui Hawaii's programs and of these same 44% of the respondents, almost twice as many have not used the services as those who have used the services. (See TABLE 11)

The other 55% (N=115) of the total number of respondents indicated they were not aware of Ho'ola Lahui Hawaii or its services. Obviously they did not use its services.

Respondents from precinct 1, Niihau, reported the highest level of awareness of Ho'ola Lahui Hawaii's services at 72% (N=21). Precinct 6, Eleele, had the lowest level of awareness of Ho'ola Lahui Hawaii's programs at 11% (N=1). Awareness of Ho'ola Lahui Hawaii appeared greater in the more western communities (Waimea through Mana including Niihau).

Analysis by sex showed that 48% (N=56) of the total female respondents and 39% (N=36) of the total male respondents were aware of Ho'ola Lahui Hawaii's services (this includes those who heard about and used and those who heard about but did not use the services). About twice as many males and females who heard about Ho'ola Lahui Hawaii have not used its services as those who have used its services.

Level of awareness of Ho'ola Lahui Hawaii seemed to be somewhat higher in the 30-39 age group (57% or N=33), followed by the 40-49 age group (51% or N=25), and the 20-29 age group (44% or N=17). The other age groups ranged from 0% to 33% awareness.

There seemed to be a direct correlation between level of awareness of Ho'ola Lahui Hawaii's programs and percentage Hawaiian blood. Of those respondents who said they were 100% Hawaiian, 72% (N=31) were aware of Ho'ola Lahui Hawaii's programs (including those who used and did not use services).

This was followed by the 75-99% Hawaiians with a 52% (N=15) level of awareness; the 50-74% Hawaiians with a 46% (N=31) level of awareness; the 25-49% Hawaiians with a 24% (N=13) level of awareness; and finally by the less than 25% Hawaiians with a 20% (N=3) level of awareness.

HEALTH INTERESTS/CONCERNS

Respondents were asked whether they were interested in counseling services, disease prevention, health promotion, and/or "other". More than one selection could be made. Health promotion received 176 choices; disease prevention 121; and counseling services 98.

From a list of 16 health and nutrition counseling services that might possibly be provided, respondents were asked to indicate which one(s) they would use. More than one choice could be made. Greatest interest seemed to be in the area of physical fitness with 154 choices. The top choice was followed relatively closely by weight watching clinic (N=128), dental care (N=121), and nutrition planning (N=119). The next two highest choices were elderly health (N=109) and stress clinic (N=105). (See TABLE 12)

In seven of the eight precincts (Koloa the exception), physical fitness was the area of health concern most often selected as an area of interest. Koloa respondents selected elderly health over physical fitness but by only one choice.

Male and female respondents proportionately made about

the same number of choices from the list of possible health and nutrition counseling services that they would use if provided. Interest by sex appeared to be equivalent and the areas of high interest such as physical fitness, weight watching clinic, dental care, and nutrition were selected about as often by both sexes. There was some difference in choices such as females were somewhat more inclined to select pre-natal care, well baby clinic, elderly health, and stress clinic, while males were inclined to select disability more often.

Analysis by age indicated that all age groups except the 70-79 and the 80 and above showed high interest in using services such as physical fitness, weight watching clinic, and dental care. This was the case for nutrition planning also, except that the under 20 group joined the 70 and above in showing lower interest in the area. Some choices seemed to reflect the life cycle interests of various age groups as the under 20, 20-29, and 30-39 showed much higher interest in pre-natal care, family planning, and well baby clinic. Although there was fairly high interest in elderly health in general, the age groups from 50-59 and above showed much higher interest.

The percentage Hawaiian blood seemed to make no difference in selection of health and nutrition counseling services of interest to the respondents.

SOURCES CONSULTED FOR HEALTH PROBLEMS

When asked who they would ask for help if they or their family had a health problem, the respondents most often answered family doctor (N=194). This was the overwhelming response by male and female respondents from every precinct, age group, and Hawaiian blood quantum level. More than one selection could be made from a list including minister, kahuna, family doctor, friend, psychiatrist, public agency counselor, relative, Hawaiian folk medicine practitioner, and other.

A relative (N=106) was the next person confided in regarding health concerns. This was followed by Hawaiian folk medicine practitioner (N=91), and more distantly by minister (N=57) and friend (N=54). (See TABLE 13)

MEDICAL HISTORY

Medical/Dental Care

In response to the question asking whether the respondent was under a dentist or doctor's care for any specific illness, 66% (N=137) answered 'no' while 33% (N=70) answered 'yes'. (See TABLE 14)

Of the 66% (N=137) that answered no, 36% (N=50) of them had made a doctor's visit within the last 12 months. Of the

33% (N=70) that answered yes, 73% (N=51) of them had made a doctor's visit within the last 12 months.

Thus, of the total number of respondents , 48% (N=101) had seen a doctor/dentist within the past 12 months, while 43% (N=89) had not. The remaining (9% or N=19) saw a dentist/doctor but more than 12 months ago.

Fourteen percent (14% or N=29) of the respondents had no regular dentist and 10% (N=21) had no regular doctor.

Analysis by precinct did not show much difference in being under a dentist or doctor's care. The responses ranged from a high of 46% (N=10) answering yes in precinct 8, Koloa, to a low of 22% (N=2) answering yes in precinct 6, Eleele.

There was little variation by sex. Thirty-two percent (32% or N=37) of the females and 36% (N=33) of the males said they were under a doctor's care.

Proportionately higher percentages (roughly about 50% or above) of those in age groups over 50 years reported being under a doctor's care. The only exception was the age group under 20 years where 67% (N=4) said they were under a doctor's care.

The percentage Hawaiian blood made no difference in being under a dentist/doctor's care. About 33% of each Hawaiian blood quantum level reported being under a doctor's care.

Pre-Natal Care

Of the total number of female respondents (N=117), ninety-four (94) had children. Of these 94 who had children, 83% (N=78) said they received regular pre-natal care. Sixteen percent (16% or N=15) said they did not receive regular pre-natal care. Twenty-three (23) female respondents did not have children. (See TABLE 15)

An analysis by age of those female respondents who reported they had children showed that the two respondents under 20 years both had regular prenatal care (100%). In descending numbers, 94% (N=34) of the respondents in the age group 35 to 49 said they received regular prenatal care. This group was followed by the 20 to 34 age group with 87% (N=27); the 65+ age group with 70% (N=7); and finally the 50 to 64 age group with 53% (N=8) reporting they received regular prenatal care. (See TABLE 16)

Surveyed Previously

The respondents were asked whether they had ever been interviewed within the last ten years regarding health concerns. Twenty-two percent (22% or N=45) answered 'yes' and 77% (N=161) answered 'no'.

Incidence and Types of Illnesses

Sixty percent (60% or N=125) of the respondents reported they had no specific illnesses. A breakdown of this 60% by sex showed that 68% (N=80) of the females and 49% (N=45) of the males said they had no specific illness. (See TABLE 17)

The specific illnesses varied among those respondents who did specify they had an illness. More than one illness could be specified. Hypertension was the most prevalent condition reported. Nineteen percent (19% or N=39) of the respondents said they had hypertension. Hypertension appeared in respondents in every precinct, in both sexes, in every Hawaiian blood quantum level, and in all income groups. However, analysis by age showed that no respondents under 30 (N=45) reported they had hypertension.

Diabetes was the next most common ailment; 8% (N=17) of the total number of respondents indicated they had diabetes. It appeared equally in males and females. It was reported by all age groups except those under 20 (N=6), 70-79 (N=7), and 80 and above (N=2). There seemed to be a higher incidence of diabetes in the respondents who were 100% Hawaiian. Sixteen percent (16% or N=7) of that group had diabetes as contrasted with around 7% or less of the other Hawaiian blood quantum level groups that reported diabetes.

The next most reported condition was asthma, but only 4% (N=8) of the respondents said they had asthma. This was closely followed by heart trouble (3% or N=7) and ulcers (3%

or N=7).

Cancer was reported by only 1% of the total number of respondents (N=3). It appeared in 2 respondents with a Caucasian background (50-74% Hawaiian) and 1 respondent with a Chinese background (75-99% Hawaiian).

THE FAMILY TREE

The family tree attempted to discern if there were any patterns or trends in the incidence and types of illnesses suffered by the respondents' family members with Hawaiian blood. The family tree inquired about grandparents, parents, siblings, and children of the respondents.

It should be noted that a duplication of reported illnesses probably occurred because some respondents in the survey may very well have been related to each other. Thus, some respondents might have reported the incidence of illness of the same person(s) in a particular family.

Among a number of illnesses reported by the respondents, cancer appeared most often. It was reported 65 times. This was followed by accident which was reported 34 times, old age 20 times, overweight 20 times, and arthritis 15 times. Following these top five illnesses, several others followed distantly with reports of these (alcoholism, allergies, gout) each occurring 8 times. The other illnesses were reported

only a couples of times.

Although the family tree was an innovative addition to the survey, the scattered responses of various illnesses make it difficult to correlate illness to ancestry or racial/ethnic background. An additional problem regarding the family tree was the respondents' general lack of knowledge of their ancestors, siblings, or children's medical/health history. However, the family tree data can probably be supplemented by doctors' historical medical records.

DISCUSSION

Survey results of native Hawaiians of West Kauai revealed some interesting demographic data and health background of the respondents. All of the respondents were at least part Hawaiian, but 67% claimed to be 50% or more Hawaiian. Not surprisingly, respondents from precinct 1, Niihau (72%), had the highest percentage who reported they were full blooded Hawaiians.

A large number of the respondents was relatively well settled in their residences. Only 1% had moved to West Kauai from somewhere out of the state within the past five years. Sixty-seven percent (67%) lived at their present address for the past five years and the remainder moved from somewhere in Kauai or another island to their present residence within the past five years. These data suggest that in general, the

respondents are relatively permanent residents of West Kauai.

More of the respondents had not heard about or used the services of Ho'ola Lahui Hawaii (55%) than those who had heard about or used its services (44%). It appeared that some precincts, especially Niihau and Waimea, were aware of Ho'ola Lahui Hawaii's services. Female respondents, those in their relatively middle years (30-49), and those with higher Hawaiian blood quantum levels reported greater awareness of Ho'ola Lahui Hawaii's services.

Interest in health issues and concerns was high among the respondents. Clearly, there was high interest in general in the areas of physical fitness, weight watching clinic, dental care, and nutrition planning. The concern over physical well being seems to parallel the general population's interest in physical health and fitness. The interest in dental care is somewhat high. This may reflect a need in this area.

It was evident that the family doctor was the person turned to if the respondent or a family member had a health problem. Confiding in a relative and Hawaiian folk medicine practitioner were choices that also ranked high. It appears that the family system and the Hawaiian folk medicine system also play an important part in the health/medical concerns of the respondents.

The majority of the respondents said that they were not under a dentist or doctor's care for a specific illness. A majority of the female respondents who had children said

they had received regular prenatal care during their pregnancies although a sizable minority had not.

When asked to identify the illnesses suffered by themselves and those in their family tree, the results showed that hypertension, diabetes, and asthma were the most common ailments suffered by the respondents. Cancer, accidents, old age, over-weight, and arthritis were specified as health threatening conditions in the family tree.

Although there were problems such as possible duplication of data and respondents' general lack of knowledge of family members' health conditions, the family tree did provide some data on the incidence and types of illnesses in the family line.

In sum, the survey results provide a general health profile of the native Hawaiians in West Kauai. Health interests and concerns are identified and these may prove helpful in planning and implementing health programs in the West Kauai communities, especially relevant to native Hawaiians.

TABLES

TABLE 1

HAWAIIAN BLOOD QUANTUM

<u>PRECINCT</u>	<u>PRECINCT TOTAL</u>	<u>100%</u>	<u>75-99%</u>	<u>50-74%</u>	<u>25-49%</u>	<u><25%</u>
1 Niihau	29	21	6	2	-0-	-0-
2 Kekaha	65	8	7	26	20	4
3 Waimea	40	8	7	12	8	5
4 Kaunakani	4	1	1	2	-0-	-0-
5 Hanapepe	14	3	-0-	9	1	1
6 Eleele	9	-0-	-0-	4	5	-0-
7 Kalaheo	24	-0-	3	8	10	3
8 Koloa	<u>24</u>	<u>2</u>	<u>5</u>	<u>4</u>	<u>11</u>	<u>2</u>
	209	43	29	67	55	15
% Total	100%	21%	14%	32%	26%	7%

TABLE 1A

HAWAIIAN BLOOD QUANTUM BY AGE

AGE	HAWAIIAN BLOOD QUANTUM				
	<u>100%</u>	<u>75-99%</u>	<u>50-74%</u>	<u>25-49%</u>	<u><25%</u>
80+	-0-	1	1	-0-	-0-
70-79	-0-	1	4	2	-0-
60-69	5	4	6	5	1
50-59	7	1	14	3	2
40-49	9	7	16	15	2
30-39	7	11	17	18	5
20-29	13	4	8	10	4
<20	<u>2</u>	<u>0</u>	<u>1</u>	<u>2</u>	<u>1</u>
TOTAL	43	29	67	55	15

TABLE 2

OTHER ETHNICITY

			<u>HAWAIIAN BLOOD QUANTUM</u>				
<u>ETHNICITY</u>			<u>100%</u>	<u>75-99%</u>	<u>50-74%</u>	<u>25-49%</u>	<u><25%</u>
Caucasian	65	39%		11	22	26	6
Chinese	34	20%		8	17	7	1
Japanese	34	20%		10	10	11	3
Filipino	21	13%		-0-	11	8	2
Other	<u>12</u>	<u>7%</u>		-0-	6	3	3
TOTAL	166	100%					

TABLE 3

MARITAL STATUS

Married	144	69%
Never Married	37	18%
Other (Widowed)	18	9%
Divorced	8	4%
Separated	1	<1%
No Response	<u>1</u>	<u><1%</u>
TOTAL	209	100%

TABLE 4

RESIDENCE - FIVE YEARS AGO

Present Address	141	67%
Same Island - Different Area	45	22%
Different Island - Within State	18	9%
Out-of-State	3	1%
No Response	<u>2</u>	<u>1%</u>
TOTAL	209	100%

TABLE 5

TOTAL INCOME - 1986

50,000 +	-	4	2%
30,000 - 49,999	-	26	12%
12,000 - 29,999	-	75	36%
< \$12,000	-	100	48%
No Response	-	<u>4</u>	<u>2%</u>
TOTAL		209	100%

TABLE 6**TOTAL FAMILY SIZE**

1	17	8%
2	13	6%
3	29	14%
4	43	21%
5	34	16%
6	25	12%
7	20	10%
8	9	4%
9	2	1%
10	4	2%
11		
12	2	1%
13		
14		
15	5	2%
16	1	<1%
No Response	<u>5</u>	<u>2%</u>
TOTAL	209	100%

TABLE 7**NUMBER OF LIVING CHILDREN**

0	32	15%
1	26	12%
2	33	16%
3	46	22%
4	25	12%
5	14	7%
6	11	5%
7	7	3%
8	2	1%
9		
10	2	1%
11	1	<1%
No Response	<u>10</u>	<u>5%</u>
Total	209	100%

TABLE 8**PERSON(S) WORKING IN HOUSEHOLD**

0	36	17%
1	52	25%
2	67	32%
3	25	12%
4	17	8%
5	5	2%
6	6	3%
7		
8	<u>1</u>	<u><1%</u>
TOTAL	209	100%

TABLE 9

LEVEL OF EDUCATION

Masters	2	1%
Bachelors	8	4%
Associate in Arts	19	9%
High School Diploma	105	50%
No High School Diploma	74	35%
No Response	<u>1</u>	<u><1%</u>
TOTAL	209	100%

TABLE 9A

LEVEL OF EDUCATION BY AGE

<u>EDUCATION</u>	<u>AGE</u>							
	<u>80+</u>	<u>70-79</u>	<u>60-69</u>	<u>50-59</u>	<u>40-49</u>	<u>30-39</u>	<u>20-29</u>	<u><20</u>
MASTERS	-0-	-0-	-0-	-0-	-0-	2	-0-	-0-
BACHELORS	-0-	-0-	-0-	1	3	3	1	-0-
ASSOCIATES	-0-	2	1	1	6	4	5	-0-
HIGH SCHOOL	-0-	1	7	10	28	36	19	4
LESS THAN HS	2	4	13	14	12	13	14	2
NO RESPONSE	-0-	-0-	-0-	1	-0-	-0-	-0-	-0-
TOTAL	2	7	21	27	49	58	39	6

TABLE 10

	<u>HIGHEST GRADE</u>	
7	7	3%
8	41	20%
9	6	3%
10	5	2%
11	9	4%
12	78	37%
12+	39	19%
Associate in Arts	9	4%
Bachelors	6	3%
16+	4	2%
No Response	<u>5</u>	<u>2%</u>
TOTAL	209	100%

TABLE 11

AWARENESS OF HO'OLA LAHUI HAWAII

Heard of and Used	32	15%
Heard of but Not Used	61	29%
Never Heard of	115	55%
No Response	<u>1</u>	<u><1%</u>
TOTAL	209	100%

TABLE 11A

AWARENESS OF HO'OLA LAHUI HAWAII BY PRECINCT

<u>PRECINCT</u>	<u>PRECINCT TOTAL</u>	<u>HEARD OF AND USED</u>		<u>HEARD OF BUT NOT USED</u>		<u>NEVER HEARD OF</u>		<u>NO RESPONSE</u>	
1 Niihau	29	11	38%	10	34%	8	28%		
2 Kekaha	65	8	12%	20	31%	37	57%		
3 Waimea	40	9	23%	14	35%	17	42%		
4 Kaunakani	4	1	25%	1	25%	2	50%		
5 Hanapepe	14	1	7%	6	43%	7	50%		
6 Eleele	9	0		1	11%	8	89%		
7 Kalaheo	24	1	4%	5	21%	18	75%		
8 Koloa	24	1	4%	4	17%	18	75%	1	4%
TOTAL	209								

TABLE 12

HEALTH INTERESTS/CONCERNS

	PRECINCT										TOTAL
	1	2	3	4	5	6	7	8			
	N (%)	N (%)	N (%)	N (%)	N (%)	N (%)	N (%)	N (%)			
PRENATAL	15 52	25 39	11 28	0 0	2 14	1 11	12 50	6 25		72 34	
FAMILY PLANNING	12 41	30 46	16 40	0 0	3 21	2 22	13 54	8 33		84 40	
WELL-BABY	25 86	28 43	17 43	0 0	4 29	2 22	13 54	8 33		97 46	
ELDERLY	14 48	26 40	22 55	2 50	11 79	6 67	12 50	16 67		109 52	
MENTAL	6 21	19 29	14 35	0 0	3 21	4 44	10 42	8 33		64 31	
M.R.	3 10	14 22	10 25	0 0	0 0	3 33	7 29	5 21		42 20	
DISABILITY	14 48	23 35	19 48	0 0	8 57	4 44	13 54	11 46		92 44	
PHYSICAL FITNESS	26 90	45 69	27 68	4 100	10 71	6 67	21 98	15 63		154 74	
STRESS	8 28	35 54	23 58	1 25	6 43	3 33	16 67	13 54		105 50	
WEIGHT	24 83	41 63	21 53	2 50	8 57	5 56	17 71	10 42		128 61	
SMOKING	10 35	17 26	16 40	0 0	5 36	0 0	12 50	7 29		67 32	
ALCOHOL	5 17	20 31	16 40	0 0	3 21	1 11	8 33	5 21		58 28	
DRUGS	9 31	27 42	15 38	0 0	3 21	2 22	9 38	7 29		72 34	
NUTRITION	16 55	39 60	22 55	1 25	9 64	5 56	14 58	13 54		119 57	
DENTAL	26 90	31 48	21 53	0	9 64	6 67	16 67	12 50		121 58	
OTHER	1 3	0	0	0	1 7	0	0	0		2 1	

TABLE 13**SOURCE CONSULTED FOR HEALTH PROBLEMS**

Family Doctor	194
Relative	106
Hawaiian Folk Medicine Practitioner	91
Minister	57
Friend	54
Psychiatrist	38
Public Agency Counselor	26
Kahuna	12
Other	5
No Response	6

TABLE 14**DOCTOR'S CARE**

Yes	70	33%
No	137	66%
No Response	<u>2</u>	<u>1%</u>
TOTAL	209	100%

TABLE 15

PRENATAL CARE

Yes	78	83%
No	15	16%
No Response	<u>1</u>	<u><1%</u>
TOTAL	94	100%
No Children	<u>+23</u>	
	117	

TABLE 16

PRENATAL CARE BY AGE

<u>AGE</u>	<u>TOTAL</u>	<u>W/CHILDREN</u>	<u>YES</u>		<u>NO</u>		<u>NO RESPONSE</u>	
65+	11	10	7	70%	3	30%		
50 - 64	16	15	8	53%	6	40%	1	7%
35 - 49	37	36	34	94%	2	6%		
20 - 34	49	31	27	87%	4	13%		
<20	<u>4</u>	<u>2</u>	<u>2</u>	100%	<u>0</u>	0%	<u>—</u>	
TOTAL	117	94	78		15		1	

TABLE 17

SPECIFIC ILLNESSES

	<u>FEMALE</u>		<u>MALE</u>	
None	80	68%	45	49%
Asthma	5		3	
Cancer	1		2	
Diabetes	11		6	
Eye	1		0	
Heart	4		3	
Hypertension	17		22	
Kidney	3		1	
Lung	1		2	
Rheumatic Fever	0		0	
Stroke	1		0	
Tooth	0		1	
Ulcers	1		6	
Other	9		10	

APPENDIX A

HO'OLA LAHUI-HAWAII QUESTIONNAIRE

HO'OLA LAHUI-HAWAII Services:

1. Ho'ola Lahui-Hawaii offers "Oni Malie," a health fitness program in this area. Are you aware of this program?

☐ Yes. Have you ever used it? 5 ☐ Yes 6 ☐ No
7 ☐ No

Health and Nutrition:

2. Would you be interested in any of the following:

3. If health and nutrition counseling services were provided, which of the following would you use? (Check as many as interviewee would use.)

4. Which of the following people would you ask for help if you or your family has a health problem? (Check as many as indicated.)

8 ☐ Counseling Services
9 ☐ Disease Prevention

12 ☐ Pre-natal Care
13 ☐ Family Planning
14 ☐ Well-baby clinic
15 ☐ Elderly health
16 ☐ Mental Health
17 ☐ Mental retardation
18 ☐ Disability
19 ☐ Physical Fitness

28 ☐ Minister
29 ☐ Kahuna
30 ☐ Family doctor
31 ☐ Friend
32 ☐ Psychiatrist

10 ☐ Health Promotion
11 ☐ Other (specify) _____

20 ☐ Stress Clinic
21 ☐ Weight-watching clinic
22 ☐ Reduce or quit smoking
23 ☐ Alcohol
24 ☐ Drug abuse
25 ☐ Nutrition planning
26 ☐ Dental
27 ☐ Other (specify) _____

33 ☐ Public Agency Counselor
34 ☐ Relative
35 ☐ Hawaiian Folk Medicine Practitioner
36 ☐ Other (specify) _____

Health Profile - Bio-Data:

5. Observe or ask, "What is your sex?"

6. What is your birthdate?

7. How much Hawaiian Blood do you have? (Check the closest.)

8. Besides Hawaiian, what other ancestry do you have most of? (Check the main one.)

37 ☐ Male

38 ☐ Female

☐ Month ☐ Day 39 ☐ Year 40 ☐ Age

41 ☐ 0 - 24%
42 ☐ 25% - 49%
43 ☐ 50% - 74%

44 ☐ 75% - 99%
45 ☐ 100%

46 ☐ Caucasian
47 ☐ Chinese
48 ☐ Filipino

49 ☐ Japanese
50 ☐ Other (specify) _____

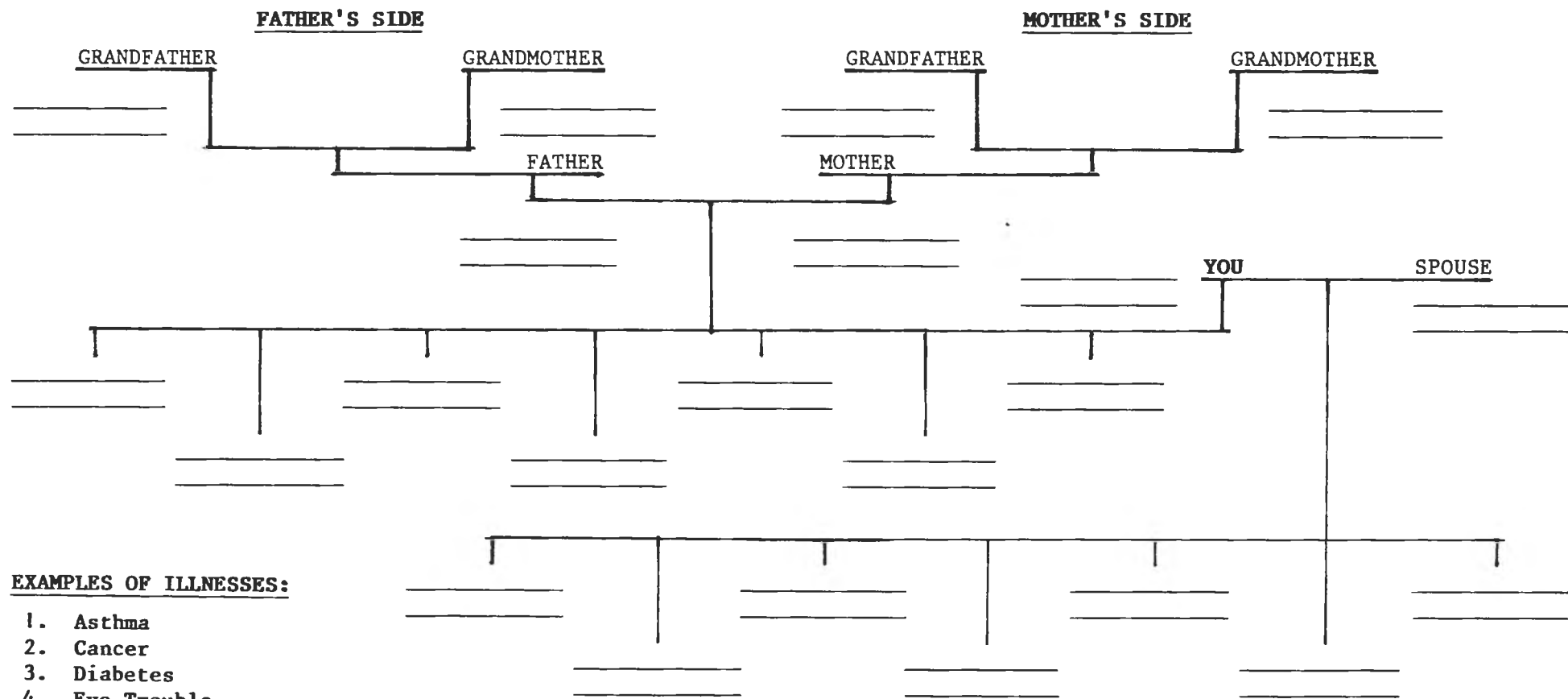
9. What is your present marital status?
- 51 ☐ Never Married 54 ☐ Divorced
 52 ☐ Married 55 ☐ Other (specify) _____
 53 ☐ Separated
10. Where did you live five (5) years ago?
- 56 ☐ Present address 58 ☐ Different island in Hawaii
 57 ☐ Same island, different area 59 ☐ Out of Hawaii
11. In 1986, what was your total income including wages, self-employment, etc.?
- 60 ☐ Less than \$12,000 62 ☐ \$30,000 - 49,999
 61 ☐ \$12,000 - 29,999 63 ☐ \$50,000 and above
12. What is your total family size, including all related adults and children living with you?
- 64 Enter number
13. How many living children do you have?
- 76 Enter number
14. How many people in your family living with you are now presently working, including you?
- 88 Enter number
15. What was the last grade you completed in school?
- 100 Enter grade
16. Did you receive a diploma, degree, certificate?
- 104 ☐ No 105 ☐ Yes (specify) _____

Medical History:

17. Are you under a dentist or doctor's care for any specific illness?
- 108 ☐ No 109 ☐ Yes (specify illness) _____
18. when was your last treatment?
- 122 ☐ Within the last six (6) months
 123 ☐ Within the past six (6) to twelve (12) months
 124 ☐ More than twelve (12) months ago
19. Who is your current dentist & doctor?
- Dentist _____ Doctor _____
20. If interviewee is female, ask the following:
 For your pregnancies, did you receive regular pre-natal care?
- 125 ☐ Yes 126 ☐ No
21. Have you ever been interviewed within the last ten (10) years for health concerns?
- 127 ☐ Yes 128 ☐ No

22. If you would look at the card with the family tree, I will ask you questions regarding your medical history. Has anyone, your grandparents, parents, brothers, sisters or children suffered from any of the illnesses listed below?

FAMILY HISTORY



EXAMPLES OF ILLNESSES:

1. Asthma
2. Cancer
3. Diabetes
4. Eye Trouble
5. Heart Trouble (heart attack)
6. Hypertension (high blood pressure)
7. Kidney/Bladder
8. Lung Disease
9. Rheumatic Fever
10. Stroke
11. Tooth Problems
12. Ulcers (stomach problems)
13. Others (specify)

NOTES: F - female M - male
 Notate F or M for brothers, sister & children
 H - Hawaiian
 Notate H for grandparents, parents, spouse who
 maybe Hawaiian/Part-Hawaiian.

APPENDIX B

APPENDIX B

RESPONSE RATE TABLE

<u>PRECINCT</u>	<u>TOTAL</u>	<u>NUMBER INTERVIEWED</u>	
1 Niihau	123	29	14% of total respondents 24% of OHA voters from precinct 1
2 Kekaha	338	65	31% of total respondents 19% of OHA voters from precinct 2
3 Waimea	229	40	19% of total respondents 17% of OHA voters from precinct 3
4 Kaumakani	23	4	2% of total respondents 17% of OHA voters from precinct 4
5 Hanapepe	114	14	7% of total respondents 12% of OHA voters from precinct 5
6 Eleele	60	9	4% of total respondents 15% of OHA voters from precinct 6
7 Kalaheo	216	24	12% of total respondents 11% of OHA voters from precinct 7
8 Koloa	234	24	12% of total respondents 10% of OHA voters from precinct 8
TOTAL	1,337	209	

APPENDIX C

INTERVIEWER'S HANDBOOK

HO'OLA LAHUI-HAWAII SURVEY
WEST KAUAI - Koloa thru Mana
MANAGEMENT PLANNING AND ADMINISTRATION
CONSULTANTS, INC.
Summer '87

PREFACE

Ho'ola Lahui-Hawaii is a group of volunteer board members from the West Kauai community and medical profession. Funding for this project is through this organization.

The objective is:

to complete this needs assessment
to determine the future program
needs of the West Kauai Hawaiian
health education project.

Management Planning and Administration Consultants, Inc. (MPAC) is hired by Ho'ola Lahui-Hawaii to conduct this study.

Ho'ola Lahui-Hawaii is interested in the personal health services of the West Kauai Hawaiian community. Personal health services is basically:

having available, trained workers such as doctors, nurses, social workers, professionals and community volunteers to provide information and/or health care when people have health concerns or would like to prevent health problems, and to give them support, encouragement, advice and education in dealing with their concerns.

CONFIDENTIALITY

Interviewers accept the responsibility of care and custody of records and information that are private in nature.

Absolute care of these records and information must be taken to protect the identity of the interviewees and their responses.

Interviewers shall not discuss their records or information with anyone else outside of this company that may reveal interviewees identity or opinions.

INTERVIEWER PROCEDURE LIST

1. Each interviewer will receive a list of potential interviewees with:

name, address and residence

2. Contact each household and schedule interviews.
(A introductory letter will be sent to each person on the list)
3. Each contact with each person must be recorded on the control form.
4. Verify appointments by phone the day before the appointment whenever possible.
5. Find the address on the map.
6. Find the actual residence.
7. Conduct the interview.
8. Turn in the questionnaire and control forms to Jill Kouchi.

INTERVIEWER TELEPHONING INSTRUCTIONS

1. Ask to speak to the person on your list.

2. Once you have the person on the line,
identify yourself and state your affiliation with MPAC.

"HELLO, MY NAME IS _____. I WORK FOR MANAGEMENT PLANNING AND ADMINISTRATION CONSULTANTS.
WE ARE CONDUCTING A SURVEY FOR HO'OLA LAHUI-HAWAII TO FIND OUT THE OPINIONS OF THE HAWAIIAN
COMMUNITY ABOUT HEALTH NEEDS AND CONCERNS.

find out if the person has received/read the letter.

"MR./MRS. _____, WE SENT YOU A LETTER EXPLAINING THE SURVEY. DID YOU RECEIVE IT?"

If, yes,

If no,

"GOOD, I'M GLAD YOU RECEIVED IT."

"OH, I'M SORRY IT DIDN'T GET TO YOU."

"MR./MRS. _____, I WOULD LIKE TO TELL YOU MORE ABOUT THE SURVEY PROJECT AND WOULD LIKE TO ASK FOR YOUR HELP IN IT. HO'OLA LAHUI-HAWAII IS PLANNING ITS HEALTH SERVICE, PROGRAMS AND FACILITIES. THEY NEED TO KNOW THE KINDS OF PROBLEMS NATIVE HAWAIIANS HAVE AND THE KINDS OF HELP THEY WANT THE HO'OLA LAHUI-HAWAII ORGANIZATION TO MAKE AVAILABLE THROUGH ITS HEALTH EDUCATION CENTER. WE WOULD LIKE TO LEARN OPINIONS OF ALL NATIVE HAWAIIANS IN THE WEST KAUAI AREA, BUT THAT IS NOT POSSIBLE, SO WE HAVE SELECTED A SAMPLE OF PEOPLE TO TALK TO. THE INTERVIEW CAN BE CONDUCTED AT YOUR HOME OR ANOTHER PLACE AT A TIME YOU CHOOSE. IT SHOULD TAKE ABOUT TWENTY (20) MINUTES OF YOUR TIME. THE INFORMATION IS COMPLETELY CONFIDENTIAL AND YOUR NAME WILL NOT BE USED IN PLANNING AND DEVELOPING HEALTH SERVICES FOR THE NEXT TWO YEARS AND YOUR OPINION WILL STAND FOR YOURSELF AND OTHERS IN THE COMMUNITY. WOULD YOU HELP THE PROJECT BY ALLOWING ME TO INTERVIEW YOU?"

If no,

"ALLOWING ME TO INTERVIEW YOU WILL GIVE YOU A CHANCE TO INFLUENCE THE KINDS OF HEALTH SERVICES THAT ARE PROVIDED IN THE FUTURE. HO'OLA LAHUI-HAWAII NEEDS TO KNOW THE VIEWS OF THE NATIVE HAWAIIANS IN THE WEST KAUAI COMMUNITY. YOU WERE CHOSEN TO BE INTERVIEWED AND I NEED ONLY TWENTY (20) MINUTES OF YOUR TIME. WOULD YOU ALLOW ME TO INTERVIEW YOU?"

If yes,

"THANK YOU FOR YOUR COOPERATION. I REALLY APPRECIATE IT. WHAT WOULD BE A CONVENIENT DAY AND TIME FOR ME TO COME TALK TO YOU?"

When you agree on a day and time, repeat back the date, day and time.

"VERY GOOD, MR./MRS. _____, I WILL COME TO YOUR HOUSE ON TUESDAY, JULY 3RD, AT 9 A.M. I'D LIKE TO TELL YOU MY NAME AGAIN, _____. THANKS AGAIN FOR AGREEING TO THE INTERVIEW. I'M LOOKING FORWARD TO MEETING YOU ON JULY 3RD. BYE."

If no,

"THANK YOU FOR YOUR TIME. BYE."

FACE-TO-FACE SCHEDULING INSTRUCTIONS

1. Wear your name tag and carry your interviewer notebook.

2. Ring the doorbell or knock. Ask to speak to the person on your list.

(The remainder¹ is essentially the same as the telephoning instructions. Do **NOT** read the words, but memorize them and say them naturally. Develop variations that feel comfortable **BUT** conveys the necessary information.)

INTRODUCTION

1. Upon meeting your interviewee, say:

"BEFORE I BEGIN, I'D LIKE TO THANK YOU FOR YOUR HELP IN THIS PROJECT. THE INFORMATION WE COLLECT THROUGH THIS SURVEY WILL GIVE HO'OLA LAHUI-HAWAII THE BASIS FOR FUTURE PLANNING FOR HEALTH NEEDS IN THE WEST KAUAI COMMUNITY. THE RESULTS OF THIS INTERVIEW WILL HELP THE NATIVE HAWAIIANS PLAN THE KINDS OF HEALTH AND RELATED SERVICES THAT ARE NEEDED. IN ORDER TO DO THIS, WE NEED TO KNOW THE KINDS OF HEALTH PROBLEMS AND STRESSES FACED BY PEOPLE IN YOUR COMMUNITY, THE KINDS OF OUTSIDE SUPPORT WHICH THEY RELY ON IN THEIR LIVES, AND THE DIFFERENT WAYS THEY GO ABOUT DEALING WITH THESE HEALTH PROBLEMS. WE HAVE A SERIES OF QUESTIONS ABOUT YOUR OPINIONS AND ABOUT THE WEST KAUAI COMMUNITY NEEDS FOR A VARIETY OF SERVICES. IN AGREEING TO BE INTERVIEWED YOU ARE GIVING THE HO'OLA LAHUI-HAWAII PERMISSION TO REPRESENT THE INFORMATION YOU PROVIDE IN THIS INTERVIEW AS STATISTICAL DATA ONLY. YOUR NAME WILL NOT BE USED IN ANY WAY. WE WOULD REALLY APPRECIATE IT IF YOU WOULD ANSWER ALL THE QUESTIONS, AS IT IS IMPORTANT FOR THE STUDY. BUT, IF THERE ARE ANY QUESTIONS THAT YOU REALLY DON'T WANT TO ANSWER, TELL ME AND WE CAN MOVE TO THE NEXT QUESTION. DO YOU HAVE ANY QUESTIONS?"

2. If they do't have any questions, proceed with the questionnaire.

"WE CAN BEGIN WITH THE QUESTIONS NOW."

3. When completed, say:

"THANK YOU FOR YOUR TIME AND COOPERATION. YOUR NAME AND IDENTIFYING INFORMATION IS CONFIDENTIAL. THE INFORMATION YOU HAVE GIVEN WILL ONLY BE USED FOR STATISTICAL PURPOSES. IF YOU HAVE ANY QUESTIONS EVEN AFTER I LEAVE, YOU HAVE MY NAME AND PHONE NUMBER SO YOU CAN CALL ME."

4. Express your appreciation and leave.

"THANKS AGAIN FOR YOUR HELP. HAVE A GOOD DAY."

PROCEDURES FOR CONTACT

1. Contact each person on your list either face-to-face or by phone to schedule an appointment.
2. As much as possible, make your attempts equally in the day and the evenings to create equal chance of making the contact.
3. You can make separate scheduling trips to the various neighborhoods on your list, or do your scheduling in conjunction with previously arranged interview trips to the neighborhood - whichever works out best for you.
4. If you are unable to make contact with anyone at the residence, try again at a different time of day. Evenings, weekends might be times when there is likely to be someone home. Try to avoid the dinner hour.
5. Try three times before giving up on a person.
6. Log each attempt on the control form as well as the appointment that is obtained.

NOTES TO THE INTERVIEWER

1. Say exactly what's printed on the questionnaire.
2. Watch body language.
3. Fight urge to over-explain.
4. Model desired behavior not correct behavior.
5. Become a "non-expert;" give no more information than is there.

*****NOTES***NOTES***NOTES*****

SIGN-IN SHEET

<u>DATE</u>	<u>NAME</u>	<u>SIGNATURE</u>
	MAY ADAMS	
	EMMALINE IHU	
<i>E/ama</i>	BERNICE KANAHELE	
	ROBERT KANAHELE	
	ELIZA KELLEY	
	ALA NIZO	

EVALUATION

Survey Interviewer Training - Dept. of Health - Dec. 4, 5, 11, 12th (20 hours)

Please circle the number that corresponds to your opinion.

Lus
Man Luez

	STRONGLY AGREE	AGREE	FEEL NEUTRAL	DISAGREE	STRONGLY DISAGREE
	1	2	3	4	5
1. I feel relatively well trained and confident.	1	2	3	4	5
2. I feel totally unable and not confident.	1	2	3	4	5
3. I will be a better interviewer because of this training.	1	2	3	4	5
4. This training has not made me a better interviewer.	1	2	3	4	5
5. I have learned things for this training that will help me in my regular work and/or life.	1	2	3	4	5
6. I found the materials clear and easy to understand.	1	2	3	4	5
7. I found the use of T.V. beneficial.	1	2	3	4	5
8. I found the trainer(s) interesting and easy to follow.	1	2	3	4	5
9. I would have preferred more lecturing.	1	2	3	4	5
10. I would have preferred more practice exercises.	1	2	3	4	5
11. I would have preferred more time to ask questions.	1	2	3	4	5
12. I found the balance of lecture, practice and questions just about right.	1	2	3	4	5
13. If someone were to ask me, I would recommend this type of training for training people to do this work.	1	2	3	4	5
14. If someone were to ask me, I would recommend this particular trainer(s).	1	2	3	4	5
15. Please write additional comments on the reverse of this page.					

1987

JULY

1987

SUNDAY	MONDAY	TUESDAY	WEDNESDAY	THURSDAY	FRIDAY	SATURDAY	
A.M.							
NOON							
P.M.			1 DOMINION DAY (CANADA)	2	3	4 INDEPENDENCE DAY (USA)	
EVE.							
A.M.							
NOON							
P.M.	5	6	7	8	9	10	11
EVE.							
A.M.							
NOON							
P.M.	12	13	14	15	16	17	18
EVE.							
A.M.							
NOON							
P.M.	19	20	21	22	23	24	25
EVE.							
A.M.							
NOON							
P.M.	26	27	28	29	30	31	
EVE.							

1987

AUGUST

1987

SUNDAY	MONDAY	TUESDAY	WEDNESDAY	THURSDAY	FRIDAY	SATURDAY	
A.M.							
NOON							
P.M.	30	31				1	
EVE.							
A.M.					210 th P. M. 1st		
NOON							
P.M.	2	3	4	5	6	7	8
EVE.							
A.M.							
NOON							
P.M.	9	10	11	12	13	14	15
EVE.							
A.M.							
NOON							
P.M.	16	17	18	19	20	21	22
EVE.							
A.M.							
NOON							
P.M.	23	24	25	26	27	28	29
EVE.							

[illegible]

HO'OLA LAHUI-HAWAII
P. O. BOX 337
WAIMEA, HI 96796

June 29, 1987

Dear West Kauai Resident:

A survey is being conducted for the Ho'ola Lahui-Hawaii to find out what kinds of health services the Native Hawaiians of West Kauai need and want Ho'ola Lahui-Hawaii to provide for them.

Some time in the next few weeks, you may be contacted by an interviewer from Management Planning and Administration Consultants, Inc. (MPAC), the people who are conducting the survey for us. If you are asked to participate, we would appreciate your cooperation in the survey, but are under no obligation to participate.

All answers will be kept strictly confidential and names of participants will not be used in any way.

If you have any questions, please feel free to call me at my office or the office of Management Planning and Administration Consultants, Jill Kouchi at 822-9210.

Mahalo,

HO'OLA LAHUI-HAWAII

Chairperson

AGENDA

I. INTRODUCTION

II. TIMETABLE

III. PROCESS

- A. HANDBOOK
- B. QUESTIONNAIRE
- C. PRACTICE

IV. ASSIGNMENT OF LISTS

V. MEETING DATES

VI. REVIEW

CONTRACT

I, _____ HEREBY AGREE TO
PERFORM THE DUTIES OF AN INTERVIEWER FOR MANAGEMENT
PLANNING AND ADMINISTRATION CONSULTANT, INC. (MPAC)
FOR THE PURPOSE OF COMPLETING THE SURVEY FOR HO'OLA
LAHUI-HAWAII.

I UNDERSTAND AND WILL ADHERE TO THE POLICY OF
MPAC REGARDING THE CONFIDENTIAL NATURE OF THE
WORK.

DATE: _____

SIGNATURE: _____

NAME: _____
(PRINT)

ADDRESS: _____

(ZIP)

TEL.# _____

SS#: _____

BD: _____

IN CASE OF AN EMERGENCY, NOTIFY: _____

HO'OLA LAHUI-HAWAII QUESTIONNAIRE

HO'OLA LAHUI-HAWAII Services:

1. Ho'ola Lahui-Hawaii offers "Oni Malie," a health fitness program in this area. Are you aware of this program?

☐ Yes. Have you ever used it? 5 ☐ Yes 6 ☐ No
7 ☐ No

Health and Nutrition:

2. Would you be interested in any of the following:
3. If health and nutrition counseling services were provided, which of the following would you use? (Check as many as interviewee would use.)
4. Which of the following people would you ask for help if you or your family has a health problem? (Check as many as indicated.)

8 ☐ Counseling Services
9 ☐ Disease Prevention

10 ☐ Health Promotion
11 ☐ Other (specify) _____

12 ☐ Pre-natal Care
13 ☐ Family Planning
14 ☐ Well-baby clinic
15 ☐ Elderly health
16 ☐ Mental Health
17 ☐ Mental retardation
18 ☐ Disability
19 ☐ Physical Fitness

20 ☐ Stress Clinic
21 ☐ Weight-watching clinic
22 ☐ Reduce or quit smoking
23 ☐ Alcohol
24 ☐ Drug abuse
25 ☐ Nutrition planning
26 ☐ Dental
27 ☐ Other (specify) _____

28 ☐ Minister
29 ☐ Kahuna
30 ☐ Family doctor
31 ☐ Friend
32 ☐ Psychiatrist

33 ☐ Public Agency Counselor
34 ☐ Relative
35 ☐ Hawaiian Folk Medicine Practitioner
36 ☐ Other (specify) _____

Health Profile - Bio-Data:

5. Observe or ask, "What is your sex?"
6. What is your birthdate?
7. How much Hawaiian Blood do you have? (Check the closest.)
8. Besides Hawaiian, what other ancestry do you have most of? (Check the main one.)

37 ☐ Male

38 ☐ Female

☐ Month ☐ Day 39 ☐ Year 40 ☐ Age

41 ☐ 0 - 24%
42 ☐ 25% - 49%
43 ☐ 50% - 74%

44 ☐ 75% - 99%
45 ☐ 100%

46 ☐ Caucasian
47 ☐ Chinese
48 ☐ Filipino

49 ☐ Japanese
50 ☐ Other (specify) _____

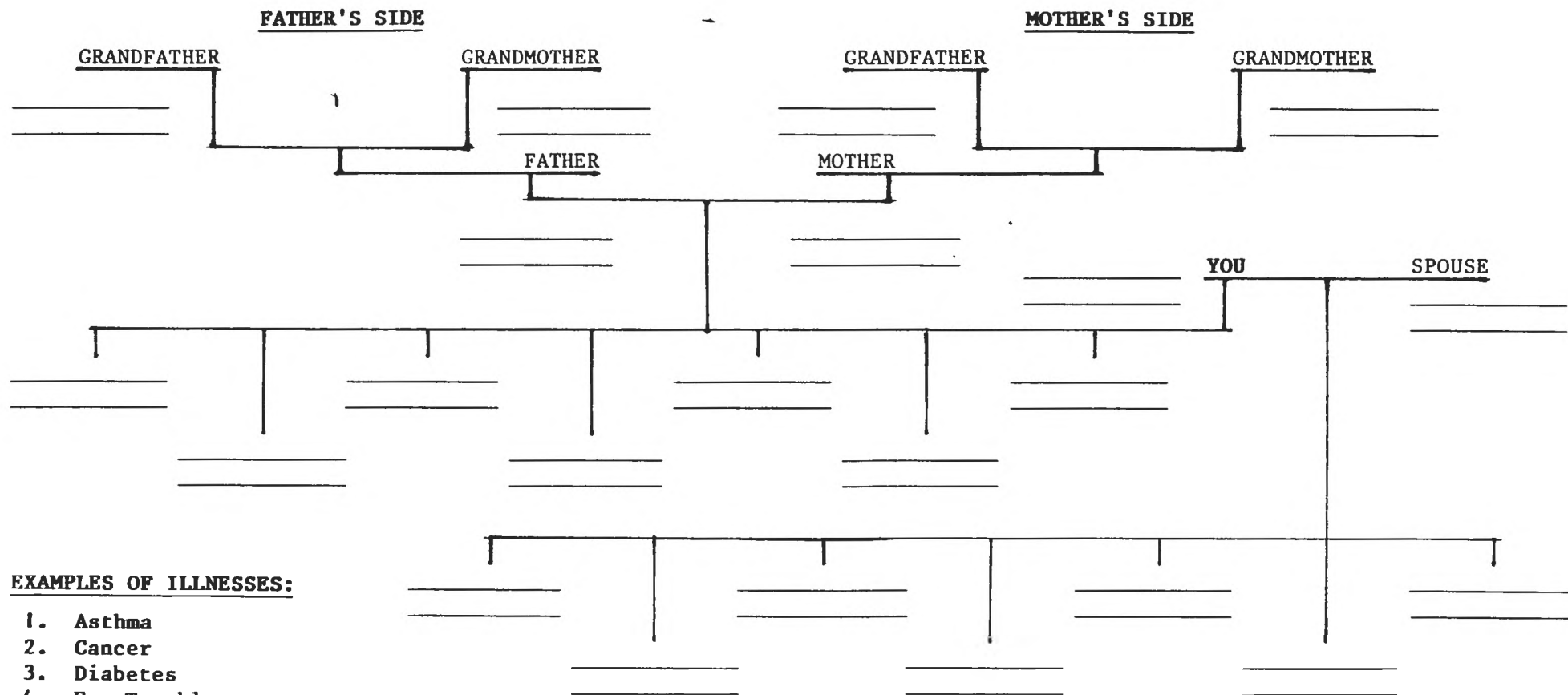
9. What is your present marital status?
- 51 ☐ Never Married 54 ☐ Divorced
 52 ☐ Married 55 ☐ Other (specify) _____
 53 ☐ Separated
10. Where did you live five (5) years ago?
- 56 ☐ Present address 58 ☐ Different island in Hawaii
 57 ☐ Same island, different area 59 ☐ Out of Hawaii
11. In 1986, what was your total income including wages, self-employment, etc.?
- 60 ☐ Less than \$12,000 62 ☐ \$30,000 - 49,999
 61 ☐ \$12,000 - 29,999 63 ☐ \$50,000 and above
12. What is your total family size, including all related adults and children living with you?
- 64 Enter number
13. How many living children do you have?
- 76 Enter number
14. How many people in your family living with you are now presently working, including you?
- 88 Enter number
15. What was the last grade you completed in school?
- 100 Enter grade
16. Did you receive a diploma, degree, certificate?
- 104 ☐ No 105 ☐ Yes (specify) _____

Medical History:

17. Are you under a dentist or doctor's care for any specific illness?
- 108 ☐ No 109 ☐ Yes (specify illness) _____
18. If yes, when was your last treatment?
- 122 ☐ Within the last six (6) months
 123 ☐ Within the past six (6) to twelve (12) months
 124 ☐ More than twelve (12) months ago
19. Who is your current dentist & doctor?
- Dentist _____ Doctor _____
20. If interviewee is female, ask the following:
 For your pregnancies, did you receive regular pre-natal care?
- 125 ☐ Yes 126 ☐ No
21. Have you ever been interviewed within the last ten (10) years for health concerns?
- 127 ☐ Yes 128 ☐ No

22. If you would look at the card with the family tree, I will ask you questions regarding your medical history. Has anyone, your grandparents, parents, brothers, sisters or children suffered from any of the illnesses listed below?

FAMILY HISTORY



EXAMPLES OF ILLNESSES:

1. Asthma
2. Cancer
3. Diabetes
4. Eye Trouble
5. Heart Trouble (heart attack)
6. Hypertension (high blood pressure)
7. Kidney/Bladder
8. Lung Disease
9. Rheumatic Fever
10. Stroke
11. Tooth Problems
12. Ulcers (stomach problems)
13. Others (specify)

NOTES: **F** - female **M** - male
 Notate **F** or **M** for brothers, sister & children
H - Hawaiian
 Notate **H** for grandparents, parents, spouse who
 maybe Hawaiian/Part-Hawaiian.

HO'OLA LAHUI-HAWAII QUESTIONNAIRE

QUESTION #2

COUNSELING SERVICES
DISEASE PREVENTION

HEALTH PROMOTION
OTHER (SPECIFY)

QUESTION #3

PRE-NATAL CARE
FAMILY PLANNING
WELL-BABY CLINIC
ELDERLY HEALTH
MENTAL HEALTH
MENTAL RETARDATION
DISABILITY
PHYSICAL FITNESS

STRESS CLINIC
WEIGHT-WATCHING CLINIC
REDUCE OR QUIT SMOKING
ALCOHOL
DRUG ABUSE
NUTRITION PLANNING
DENTAL
OTHER (SPECIFY)

QUESTION #4

MINISTER
KAHUNA
FAMILY DOCTOR
PSYCHIATRIST
OTHER (SPECIFY)

PUBLIC AGENCY COUNSELOR
RELATIVE
HAWAIIAN FOLK MEDICINE PRACTITIONER
FRIEND

QUESTION #7

0 - 24%
25% - 49%
50% - 74%

75% - 99%
100%

QUESTION #9

NEVER MARRIED
MARRIED
SEPARATED

DIVORCED
OTHER (SPECIFY)

QUESTION #10

PRESENT ADDRESS
SAME ISLAND, DIFFERENT
AREA

DIFFERENT ISLAND IN
HAWAII
OUT OF HAWAII

QUESTION #11

LESS THAN \$12,000
\$12,000 - 29,999

\$30,000 - 49,999
\$50,000 AND ABOVE

APPENDIX D

HO'OLA LAHUI-HAWAII
P. O. BOX 337
WAIMEA, HI 96796

June 29, 1987

Dear West Kauai Resident:

A survey is being conducted for the Ho'ola Lahui-Hawaii to find out what kinds of health services the Native Hawaiians of West Kauai need and want Ho'ola Lahui-Hawaii to provide for them.

Some time in the next few weeks, you may be contacted by an interviewer from Management Planning and Administration Consultants, Inc. (MPAC), the people who are conducting the survey for us. If you are asked to participate, we would appreciate your cooperation in the survey, but are under no obligation to participate.

All answers will be kept strictly confidential and names of participants will not be used in any way.

If you have any questions, please feel free to call me at my office or the office of Management Planning and Administration Consultants, Jill Kouchi at 822-9210.

Mahalo,

HO'OLA LAHUI-HAWAII

Emmaline K. Ihu
Chairperson

P.S. One of our survey-takers will call on you. They are:

*May Adams
337-9115*

*Emmaline Ihu
338-1815*

*Bernice Kanahke
338-1766*

*Robert Kanahke
337-1196*

*Ruth "Alo" Nizo
337-1584*

*Leah Peaira
337-1258*

*Jill Kouchi
822-9210*

We would appreciate a call to assist in interviewing you. Mahalo.

MPAC

MANAGEMENT PLANNING & ADMINISTRATION CONSULTANTS, INC.

Kauai Office:
87 Oloheua Road
Kapaa, Kauai 96746
Tel. (808) 822-9210

Century Center, Suite 3539
1750 Kalia Avenue
Honolulu, Hawaii 96826
Tel. (808) 633-7713

APPENDIX E

August 11, 1987

Dear West Kauai Resident:

We are currently trying to survey the final names on our list of Hawaiians/ Part-Hawaiians for our survey for Hoola Lahui-Hawaii. As we explained in our first letter to you, this information will be strictly confidential and be used to structure medical information and programs for the West Kauai Hawaiian population.

We would appreciate it if you would return the enclosed card to us after answering the few questions. It would help us continue our work.

If you have any questions please feel free to call me at 822-9210 or any of the survey takers listed on your first letter.

We will await to hear from you soon. Mahalo.

Sincerely,

Jill Kouchi

encl.

MANAGEMENT PLANNING & ADMINISTRATION CONSULTANTS, INC.
5887 Oloheua Road
Kapaa, HI 96746
(808) 822-9210

August 24, 1987

Dear West Kauai Resident:

About two weeks ago, we sent you a letter explaining our survey enclosed with a card for you to respond on and return with postage affixed. We have not heard from you and would like very much to have you respond.

Of course we would be more than happy to meet you and conduct the short survey. However, if you feel that you would rather not be interviewed, you could just check the appropriate box and return it by mail.

If you have any questions, please feel free to call me at 822-9210. I would be happy to answer any questions you may have or set up an appointment for an interview.

As we have explained in the past, the information we receive from the many people willing to be interviewed is all confidential and your name will not be in any of the final reports. This survey is to find out what the Hawaiian/part-hawaiian population of West Kauai sees as needs or concerns regarding health and medical concerns. Your assistance in this survey will be most helpful in the planning of the future medical programs specifically directed to the Hawaiian population.

Therefore, we ask you to consider our survey and feel free to call me or any of our interviewers (Emmaline Ihu -338-1815, Bernice Elama Kanahale - 338-1766, Robert Lani Kanahale - 337-1196, Ruth Ala Nizo - 337-1584, and Leah Pereira - 337-1258). My name is Jill Kouchi and you can reach me at 822-9210. We look forward to hearing from you.

Sincerely,

Jill Kouchi

APPENDIX F

September 23, 1987

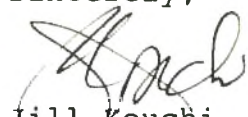
Dear West Kauai Resident:

Thank you very much for giving us your time by answering our numerous questions for the Ho'ola Lahui Hawaii survey. Our six (6) interviewers worked hard to contact the selected westside residents and your willingness and cooperation made our job an enjoyable experience as well as a real learning experience.

In the months ahead, Ho'ola Lahui Hawaii will receive the final report and work towards determining programs for the West Kauai Hawaiian population. Hopefully, you will be able to participate and enjoy programs that will enhance our lives.

Again, thank you for your time and cooperation.

Sincerely,



Jill Kouchi
Research Field Supervisor

Interviewer