



NEWS BRIEFS

By Tom Wade
Kapi'o Editor

Air conditioning work continues

Construction continues on schedule with subcontractors working around the clock to finish the rough installation of electrical outlets, water lines and thermostats in preparation for the air conditioning retrofit scheduled to begin in late February.

According to acting Administrative Services Director, Angela Meixell, workers are optimistic that the rough installation will be complete in Kauila by the beginning of the semester. They have agreed to halt construction on 'Ilima until the air conditioning units arrive in March.

When the units are delivered and installation begins, classes affected by the construction will be relocated primarily in the upper conference rooms of 'Ilima to allow construction and installation to continue in the buildings slated for retrofit, she said.

Meixell asks that students and faculty offer "plenty kōkua" during the interim phase of this construction project. Noise will be intense at times during the school day but limited to only the external construction areas.

Parking will be a BIG problem

Parking woes continue. Once again, due to increased enrollment and the lack of adequate parking, students are being asked to consider alternate means of transportation. Vehicles will be towed with no exception if they are parked illegally on campus. Parking Lot A will again only be available to those with the required sticker obtained through the parking lottery. Some parking is again being offered at The Diamond Head Theatre. Students are reminded that an additional 100 stalls are available in the lower parking area near the vacant portables.

According to DAGS inspector, Thomas Reppuhn, the lower parking lot is accessible from Kilauea Ave. and 18th Avenue, but he warns drivers to exercise extreme caution when moving vehicles through the parking lot driveways. Reppuhn said the area under construction has experienced numerous "quality control" problems over the years.

The roadway has suffered severe curb and gutter damage due to the ongoing road construction and street line markings are sometimes not visible to moving traffic, he said.

Reppuhn said that motorists driving through the area must keep safety first.

Termites chewing up library

More termite damage has been detected on campus. This time the crusty critters have managed to chew up and through the left interior staffroom wall inside the library. The damage caused will require underground extermination with portions of the wall, floor and carpet needing replacement. Termites continue to cost the school hundreds of dollars in treatment and repair.

Bldg. 933 to make way for parking

In other news, Meixell said that plans to demolish Building 933 this year are no longer tentative. While contracts have been signed the school is still waiting for start dates from the contractor. Once the building is down an approximate 100 more parking stalls will be made available on the space that was cleared.

Overload policy changes

KCC has adopted an overload policy for liberal arts courses only. Students should not see faculty members or department chairs for overloads.

Students who meet the following overload criteria should first see a counselor in 'Ilima 103 during the registration period, Jan 9—17:

- Student needs a class to graduate with degree or certificate this spring.

- Student needs one last class needed for entry into a pre-transfer program or to transfer.

- Student has extenuating circumstances, such as health, that requires special scheduling.

- Student wants a performance course in music, art, dance or drama. Humanities Chair will overload on a case-by-case basis.

Seeing a counselor does not guarantee an overload. Overload forms and information are available in 'Ilima 103.

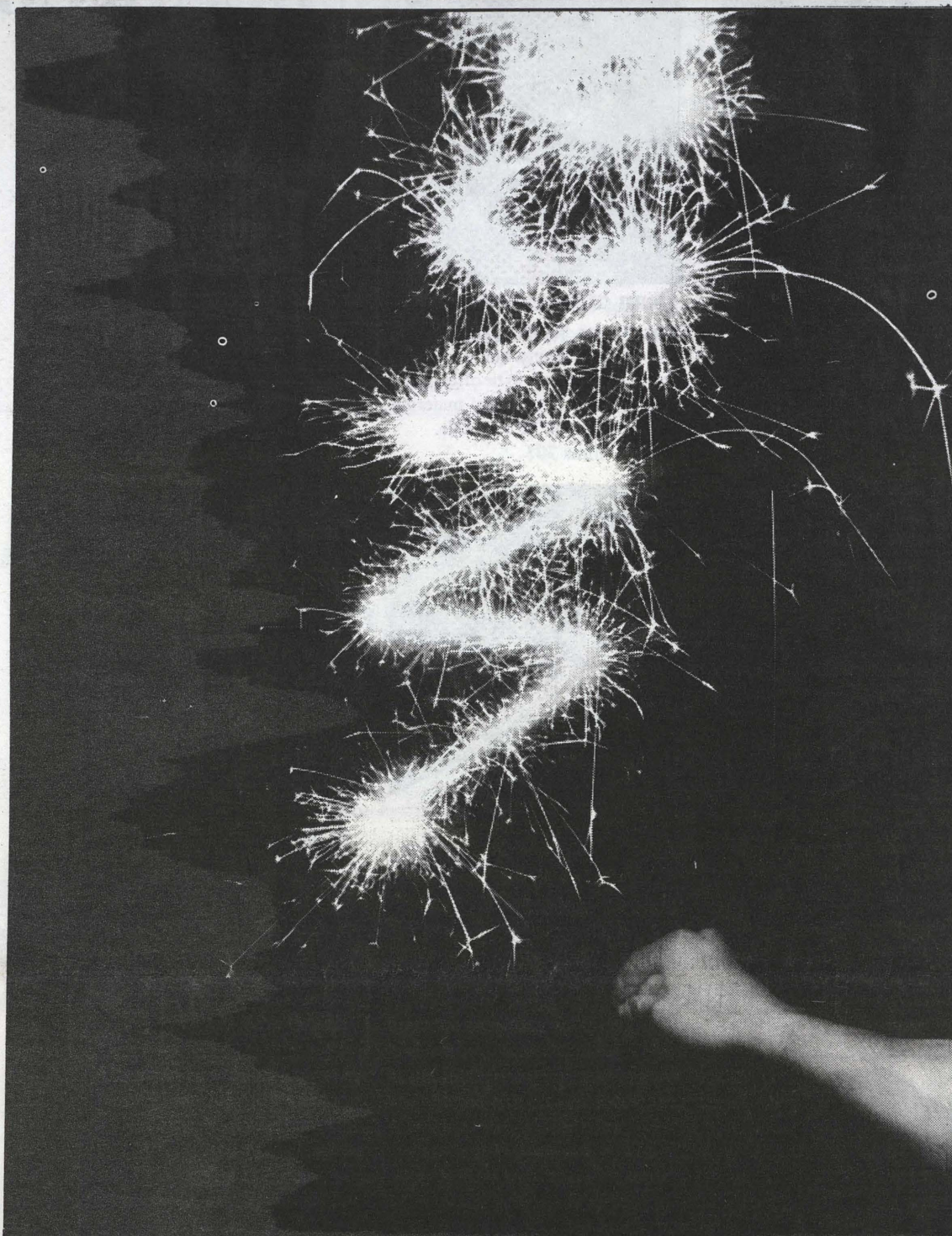


Photo by Raymond Yuen

KCC student brings sparkle to the new year.

Classes to include volunteerism

Stan Fichtman
Staff Writer

Starting this semester, KCC will be the first community college in the UH system to introduce service learning into the curriculum in courses taught here.

The college has received funding from the Campus Compact Center for Community Colleges, the Hawai'i State Campus Compact, and the American Association of Community Colleges.

These grants will help KCC link service with the three cross-curricular emphases of the KCC curriculum. Those are the Writing Across the Curriculum (WAC), Thinking and Reasoning (TRE), and Kapi'olani's Asia-Pacific Emphasis (KAPE).

A "Multicultural Readings" project, proposed by Mavis Hara, Arts and Science lecturer and Linka Corbin-Mullikin, Associate Professor of English will involve students

in English 9V, 21V and 102 in directed reading activities at Alani Child Care, and later for Palolo Housing children. The project was awarded \$1,500 by the Hawai'i State Campus Compact. Of that total, \$700 will be used to develop a multi-cultural library of children's books to provide material for the readings.

The second project is for the development of a "Palolo Pride" newsletter. The project, proposed by Assistant Professor of English Janice Cook, will help students in ESL 100 classes learn writing skills by producing a newsletter for Palolo neighborhoods.

Also, the students will tutor Palolo children in their writings. The project was awarded \$3,000 by the national Campus Compact Center for Community Colleges.

The American Association of Community Colleges also awarded KCC a service learning grant for general use in the expansion of other service learning projects in the cur-

riculum. The grant in total is \$11,966, with matching funds from KCC totaling \$13,136. The monies will be spent over the next three years to build a service learning program.

The coordinator of all service learning projects on campus is Assistant Dean Dr. Robert Franco. Linka Corbin-Mullikin will be the faculty service learning coordinator, and Dorothy Wheeler will be the student assistant to Dr. Franco.

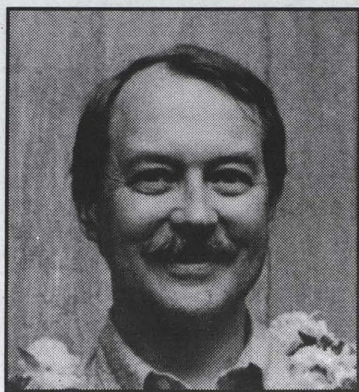
Other courses that will be involved with service learning on campus:

- Anthropology 200, Cultural Anthropology, a requirement for nursing students, taught by Carl Hefner, will integrate service into the existing fieldwork requirement.

- Sociology 218, taught by Neghin Modavi, students will do volunteer service for non-profit organizations dealing with homelessness, hunger, spouse abuse, or drug rehabilitation.

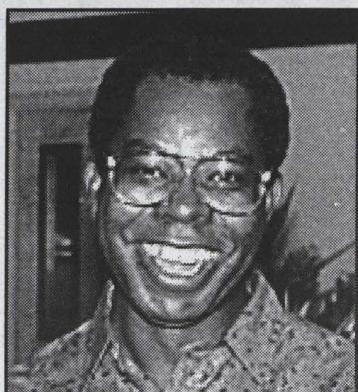
see VOLUNTEER, page 3

Who's who, on and around campus



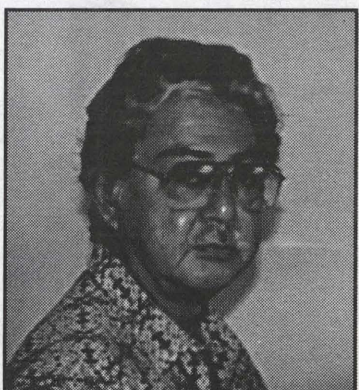
**KCC Provost
John Morton**

Sets the direction for the college and keeps it running as smoothly as possible.
Office: 'Ilima 214



**Dean of Instruction
Dr. Leon Richards**

Oversees instructional programs, deciding on classes to be offered and making sure instructional materials and services will be available.
Office: 'Ilima 207



**Dean of Student Services
Ralph Ohara**

Oversees registration, financial aid, student activities and the many counseling/career guidance services available. He's also the person to see for late registration and withdrawals.
Office: 'Ilima 205

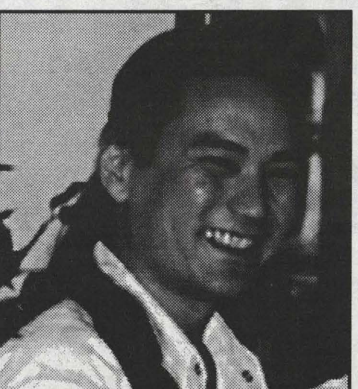


**Acting Director of
Administrative Services
Angela Meixell**

Oversees custodians, groundskeepers and security. She is also in charge of business and fiscal matters, personnel and the bookstore.
Office: 'Ilima 211A



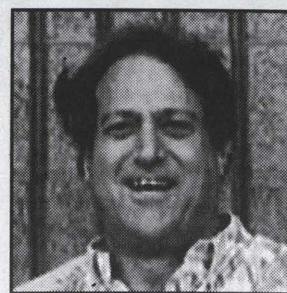
**Learning Assistance
Center
Coordinator
Louise Yamamoto**



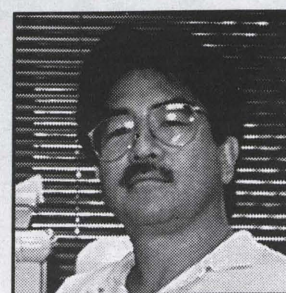
**Computing Center
Coordinator
Charles Aoki**

DEPARTMENT CHAIRS

A new policy regarding overloads has been instituted for Liberal Arts courses. Students must fill out the overload form first, then see a counselor before going to department chairs for overload approval.



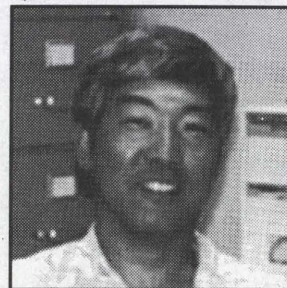
**Bob LeClair
Legal Assisting
Kōpiko 201D**



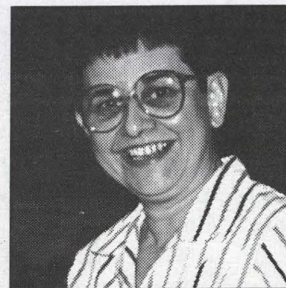
**Charles Matsuda
Math/Science
Kalia 101C**



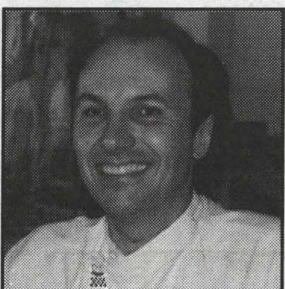
**Jane Fukunaga
Social Sciences
'Ōlonā 112**



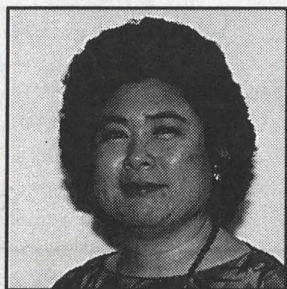
**Guy Nishimoto
Language Arts
Kalia 101B**



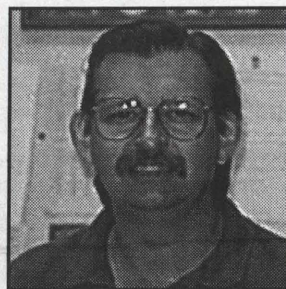
**Delmarie
Humanities
Kalia 101A**



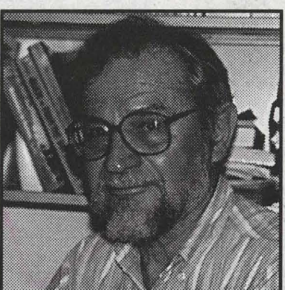
**Feank Leake
Food Service/Hospitality
'Ōhelo 101A**



**Trude Pang
OAT
Kōpiko 201C**



**Edward Kalinowski
Emergency Medical Svcs.
Kauila 101A**



**Carl Dughi
Business Administration
'Iliahi 112**



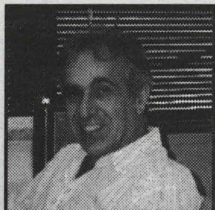
**Sanae Moikeha
Allied Health
Kauila 207**



**Joan Matsukawa
Nursing
Kauila 122C**

Pre-Transfer Advising Programs Counselors

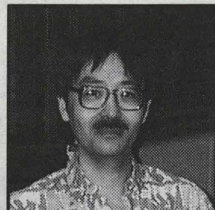
Students planning to transfer to various 4-year programs should contact their pre-transfer advisers for the latest information in requirements.



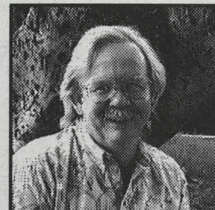
**Ibrahim Dik
Pre-Business
Olonā 210**



**Jane Fukunaga
Pre-Education
Olonā 216**



**Alfred Seita
Pre-Engineering
'Iliahi 211**



**Kent Killam
Pre-ICS
'Iliahi 118**



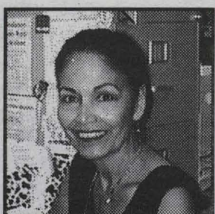
**Noreen Naughton
Pre-Art
Koa 207**



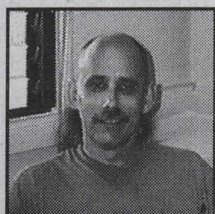
**Janice Walsh
Pre-Business
'Iliahi 121**



**Lori Yonemori
Food Service/Hospitality
'Ōhelo 105**



**Elsie Choy
Pre-Nursing
Kauila 124C**



**James Becker
Pre-Psychology
Olonā 211**



**Tanya Renner
Pre-Psychology
Olonā 212**



**Jeanne Edman
Pre-Psychology
Olonā 215**

KAPI'O January 9, 1995

3

Buffington recommends mail-in be dropped

By Tom Wade
Kapi'o Editor

Mail in registration should be completely eliminated and substituted with a more efficient process that includes an earlier extended walk up, said KCC Registrar, Judy Buffington in her recommendation to Dean Ohara,

"We have to change what we are doing," she said. And the school is reconsidering whether to assign registration priority to continuing students based on credits earned as opposed to the first-come-first-

serve basis or the standard revolving alpha system which currently is used.

Buffington would like to see broad categories. For instance, take students that have earned 30 credits first and then 12, 6, and so forth. The revolving alpha system would be used to enroll the remainder of students who are new, or continuing students who do not register early.

This method of registration would help alleviate some of the long lines and Buffington would like to see the system implemented

by next semester. Her proposal has been submitted but a committee still needs to be formed to study the available options.

"Everyone agrees that mail-in is not working," she said. The procedure has caused frustration for both the students and administration, and "we are wasting our time processing registration forms and not giving students classes."

Asked if the school would consider installing monitor screens so students could view which classes had been dropped or added, Buffington said the idea would have

"limited benefits" because the classes could be closed while the student waits in line to enroll.

While monitor viewing screen would eliminate some student lines and much of the guess work, the information could be dated before the student even realizes the change.

Students and faculty both consider mail-in a complete hassle. While her alternatives have received support from the administration, one option the school is considering would be the phone-in style registration similar to that used at UH—Mānoa.

At Mānoa, students have experienced summer school registration over the phone with relative ease. KCC is monitoring the progress of this procedure and hopes to implement the system within the next few years. While the initial installation of phone-in style registration is costly, and the state has limited funds available for spending, Buffington said that ultimately KCC students could have full access to registration by phone.

For more information, contact Registration Office at 734-9532

Volunteerism

Continued from page 1

•Sociology 231, taught by Robin Mann, students will conduct peer counseling with members of local youth gangs.

•Psychology 170, taught by Tanya Renner, students will provide volunteer services to the Rainbow Ohana Coalition.

•Students in Philosophy 102 and Philosophy 250 will provide volunteer service in community organizations and reflect on the philosophical basis of service and ethics in various Asian traditions.

•In History 152, World Civilizations, students will provide service in local homes for the elderly. Students will gather, reflect, upon and compose multicultural stories based on interviews with the elderly.

•In Honors 150, taught by Dennis Kawaharada, Phi Theta Kappa students will complete their service requirement by working on the Polynesian Voyaging Society's Multimedia Education Project.

•Students in Botany 105 and five students in Botany 130, taught by Nelda Quinsell, will provide volunteer services at the Lyon Arboretum.

•In Nursing, taught by Katherine Shildeler, students will provide services in family shelters, elderly long-term care facilities and children's hospitals.

In all of these classes, students will be given the option to volunteer.

A timetable of meetings and orientations will take place during the semester, with a summer institute planned for those involved with service learning. The first of these meetings will be an orientation for faculty and students interested in service learning on Jan. 23.

The key objectives of the service learning team is to provide students with the opportunity to not only gain experience in their field of study, but also to cultivate a sense of community and responsibility. The project objectives call for 100 students to be involved with service learning and for KCC to serve as a mentor college to other community colleges within the UH system.

WANTED

Dependable babysitter for
3 children ages 7,12,13.
Kapahulu home. Flexible hours.
\$5 per hour + tip.
Call Steve at 734-0927

Here's \$5 for you.



And \$5 for a friend.



Bankoh Campus Checking

Open a Bankoh Campus Checking Account and a Bank of Hawaii Access Card and get \$5!

Or, get \$5 even if you already have a Bankoh Campus Checking Account! Refer a friend (using the coupon below)—and when he

or she opens a Bankoh Campus Checking Account and a Bank of Hawaii Access Card—we'll give each of you \$5. Each qualified referral you make earns you \$5. No limit on number of referrals!

As a full-time student, grad or undergrad, here's what's included:

- **BANKOH CAMPUS CHECKING AT NO CHARGE.**
- **\$5 IN YOUR ACCOUNT!**
- **BANK OF HAWAII ACCESS CARD® AT NO CHARGE** for the first six months, then for only \$6 a year... that's 50% off the usual fee of \$12.
- **NO MONTHLY SERVICE FEE.**
- **NO MINIMUM BALANCE REQUIRED.**
- **GREATER BANKING CONVENIENCE AT NO CHARGE**—Access to more ATMs and more branches than any other bank in Hawaii.
- **FREE BANKOH BANKCARD.**

Get no charge checking and, as a bonus, pick up \$5 the easy way! That's what it takes to be your bank.

MEMBER FDIC

Offer good 1/2/95 through 2/17/95. Early closing fees and all other terms stated in the account agreement and disclosure will apply. \$5 to be deposited into the new Bankoh Campus Checking Account of the referred customer (one referral paid per new account only). Customer making the referral must have an existing Bankoh Campus Checking Account and will also have \$5 deposited into his or her account if the person they referred opens a Bankoh Campus Checking Account and a Bank of Hawaii Access Card. The number of referrals is unlimited.

Bankoh Campus Checking

This coupon is worth \$5 to you... And \$5 to a friend. Use this coupon to open a new Bankoh Campus Checking Account and Bank of Hawaii Access Card. OR... Give this coupon to a friend—and when he or she brings it into any Bank of Hawaii branch and opens a Bankoh Campus Checking Account and Bank of Hawaii Access Card, each of you will get \$5 in your account. Hurry! Offer and coupon only good 1/2/95 through 2/17/95!

The New Bankoh Campus Checking Account and Bank of Hawaii Access Card are for:

Name _____
Social Security Number _____
College _____

Referred By: (May be left blank)

Your Name _____
Social Security Number _____
College _____
Account Number _____
Date _____

Bank of Hawaii
HAWAII'S BANK

MEMBER FDIC

Bank of Hawaii
HAWAII'S BANK

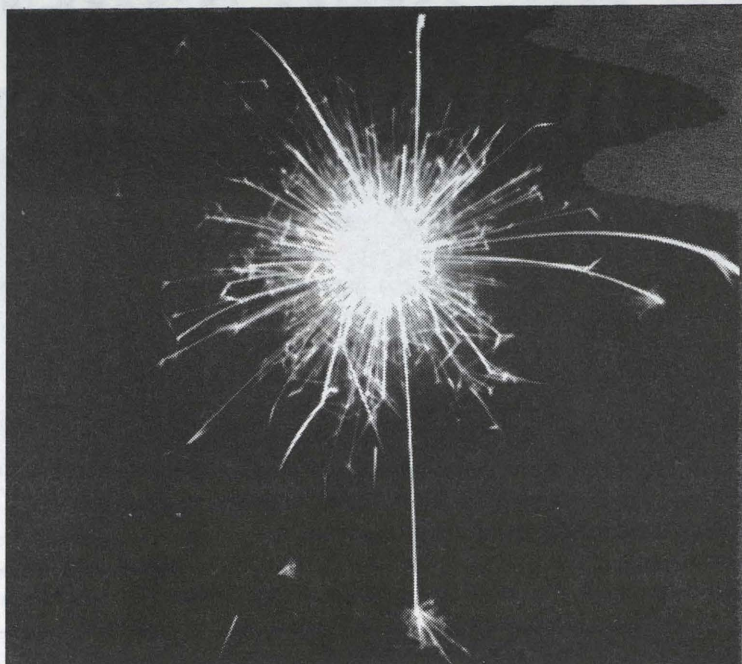


Photo by Raymond Yuen

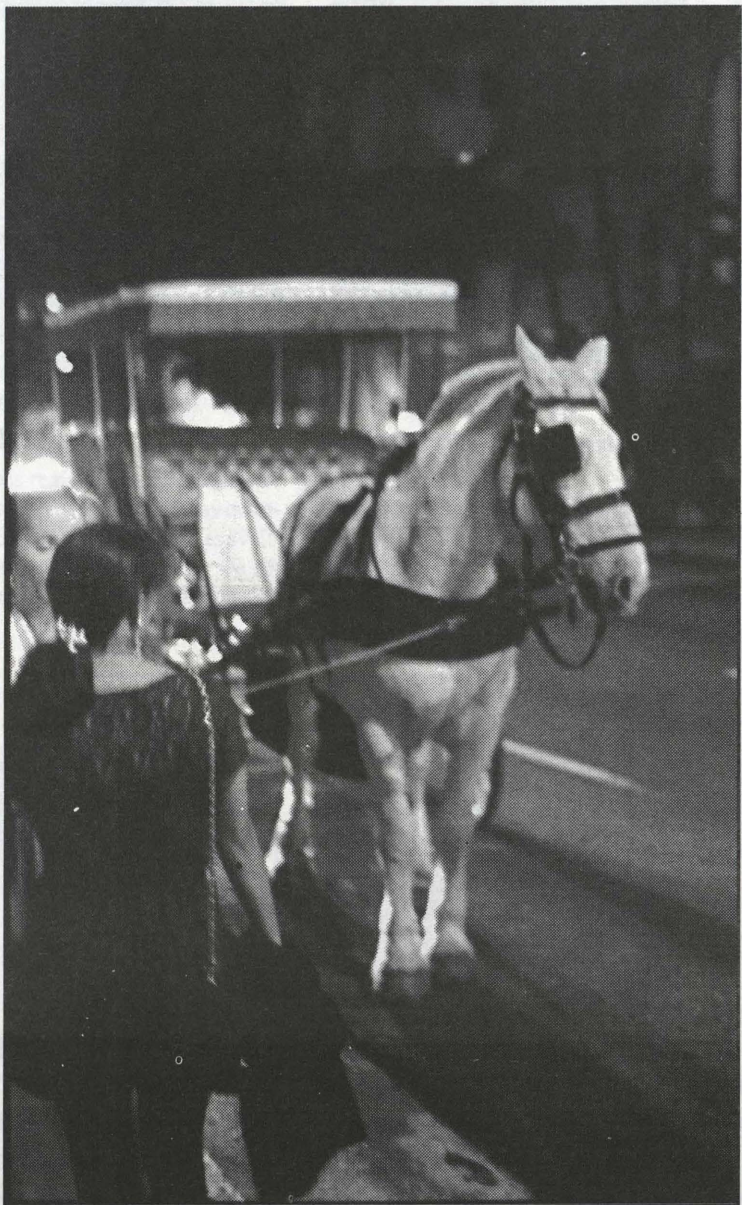


Photo by Jim Vancil

A horse drawn buggy takes a stroll around the city hall

A Downtown fairy land

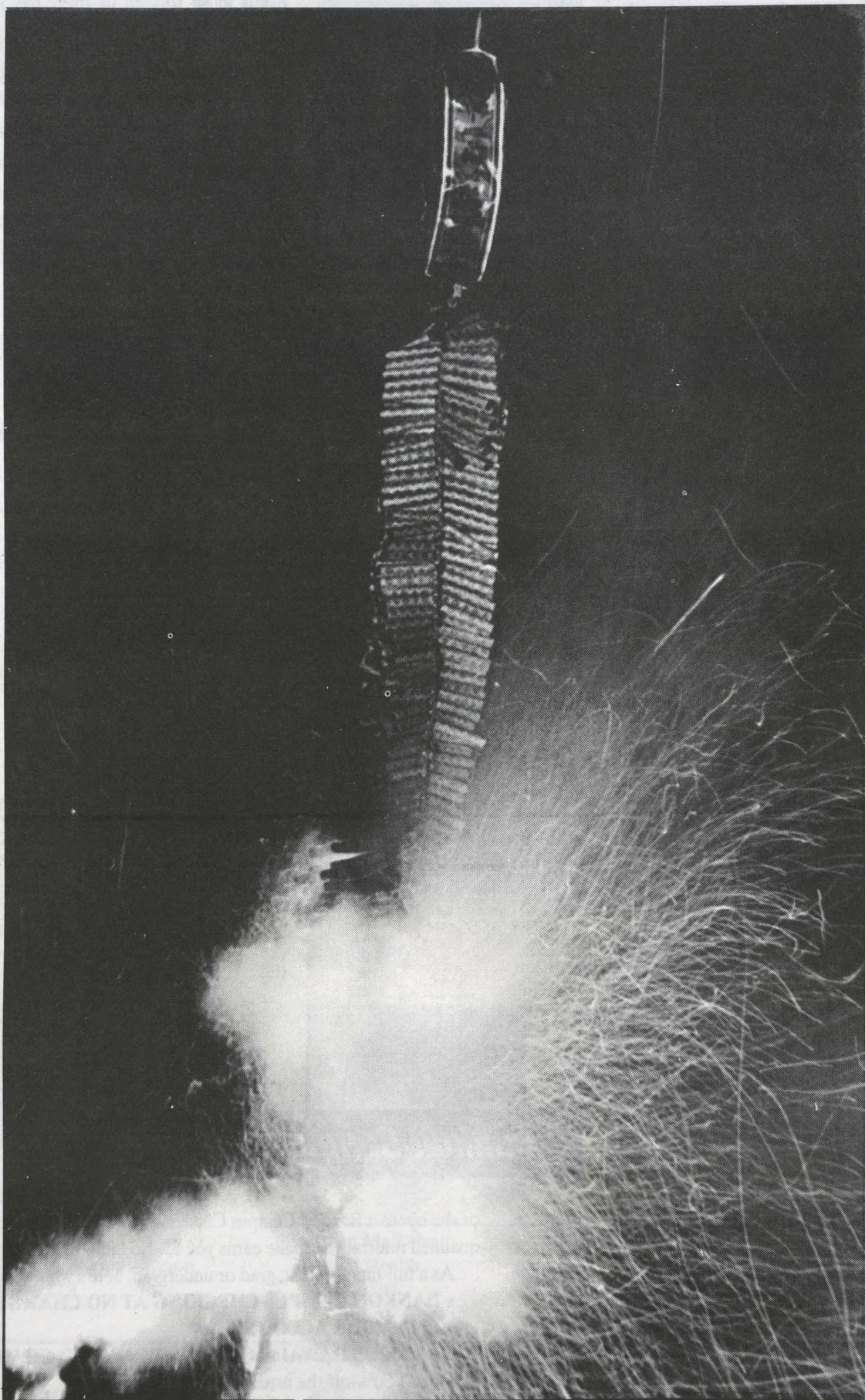
New Year's Eve is one of those few times each year the quiet streets in Downtown Honolulu reverberate with the sounds of drums, bands and song. First Nighters fed their tummies and their spirits. There was Keith Kashiwada and co-actors at Kumu Kahua doing stories from Bamboo Ridge; the Loose Screws packing in audiences for their improvisational comedy; the sound of the Sun Drummers bouncing off walls around Queen and Bishop.

Keikis invaded the lawn around City Hall, peering at the Christmas displays and getting their faces painted.

Another part of the populace, nearly 40,000 strong, filled the piers at Aloha Tower Marketplace, overflowing Fat Tuesday, Sloppy Joes, Gordon Biersch and the rest of the row, spilling beer and good cheer.

From the valleys and hillsides, the light and sounds of fireworks provided accompaniment to a spectacular fireworks display at the base of Bishop Street.

Fireworks & friends — a



The traditional 10,000 string of firecrackers and fireworks galore chase away evil spirits for the new year.

Photo by Raymond Yuen

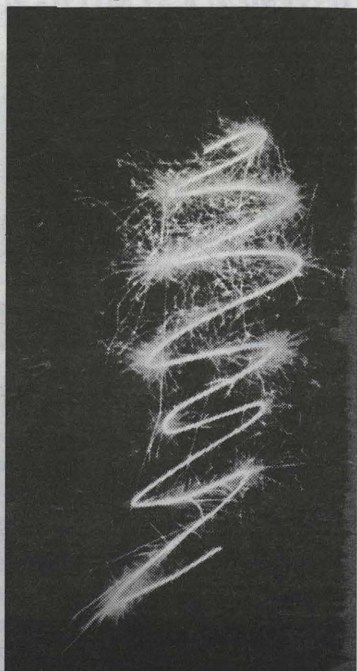


Photo by Raymond Yuen

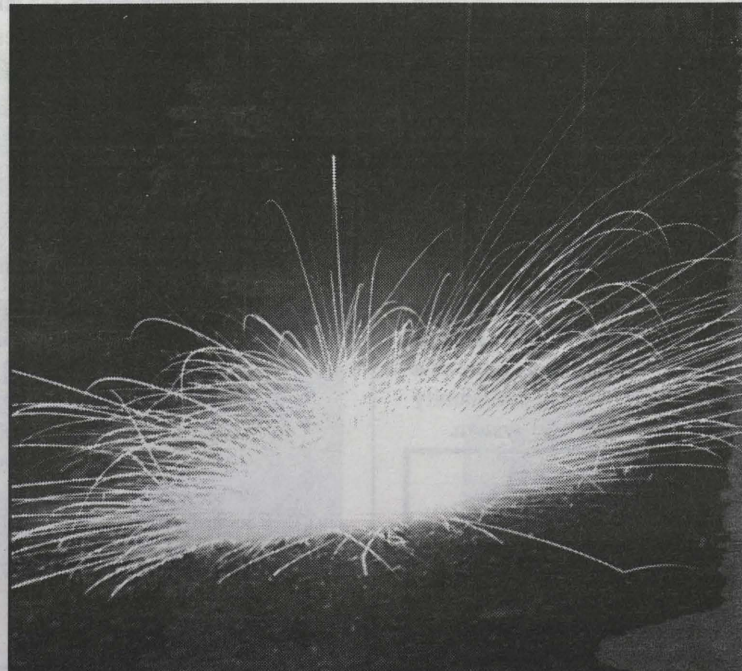


Photo by Raymond Yuen



The Mellow



The Count



Diana trans

s —and the magic of First Night



Photo by Jim Vancil

The Mellow Bellow Fellow and the Prancing Polish put on quite a show with their dancers.



Photo by Jim Vancil

Children participate in the First Night Village on the grounds of Honolulu Hale.



Photo by Jim Vancil

The Country Dancers of Hawai'i swing and turn on one of the many stages Downtown.



Photo by Jim Vancil

A spotlight shines the way to Aloha Tower Marketplace with its bands, beer, foot and high jinks.



Photo by Jim Vancil

Diana transforms a child with face painting.

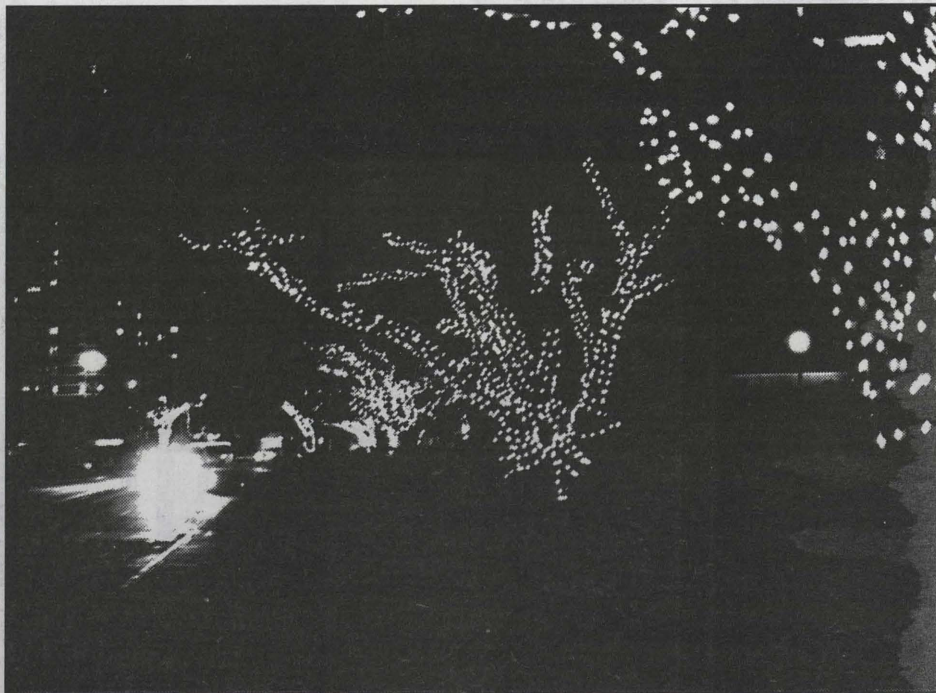


Photo by Jim Vancil

Thousands of lights transform downtown Honolulu.

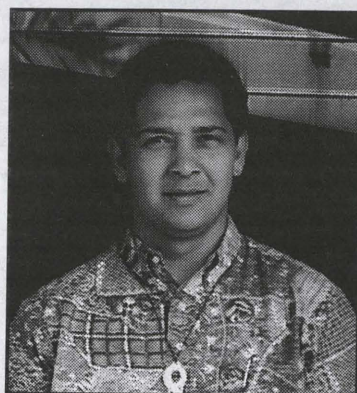
Chris Lilly: Applying Lōkahi to help students

By Florence Nishimoto
Special to Kapi'o

Chris Lilly of the Special Students Services Office has known since the seventh grade that he wanted to become a counselor. In high school, Lilly played football, but he turned down college offers to play football.

Lilly, who attended the University of Texas, decided to move here. "My decision to relocate to Hawaii was tied to my roots on my father's side of the family," Lilly said.

Upon his arrival, he enrolled at UH-Manoa where he put his goals into action. He received his BA in Human Development. Lilly completed his master's degree in Counseling and Psychology at Chaminade University because he felt the program at Manoa concentrated primarily on the theory of behavior, while he was able to take



Chris Lilly

an eclectic approach at Chaminade. Lilly believes there is practical approach to counseling and psychology.

While Lilly attended school full time at Chaminade, he worked part time as a graduate assistant coun-

selor at Chaminade University and Kapi'olani Community College. At KCC Lilly worked with the Single Parent program.

Lilly said: "Being a single parent has its unique problems. A counselor needs to be comfortable dealing with each special problem. There has to be a way to identify each unique situation and to solve it together with each student. Then gradually, these students need to find a way on their own to find themselves."

After acquiring his master of science degree, Lilly had a call from UH-Hilo to teach a Human Development course that concentrated on student college survival. Fortunately for Lilly, before the end of the summer, KCC-Special Student Services Office had a couple of openings working with students with special needs who are disabled or handicapped. So Lilly was back in Honolulu to work full-time at

KCCSpecial Student Services.

"My counseling philosophy and approach is different," Lilly said. "People need to take control of their life, be self-aware and then take action to solve their problems." During this process he said, "Think of Dorothy in the 'Wizard of Oz' who finds herself by following the yellow brick road."

When you find this yellow brick road, you may become a nurse, doctor, or whatever you desire. Along this path, you will find yourself meeting all kinds of people, challenges, and obstacles. Dealing with mistakes or obstacles are lessons to be learned."

Lilly said, "Students have to realize that they have to help themselves. Students need to know why they are in school." Students need to find out what motivates them, then they can make their decision and commitment, Lilly said. They have to ask themselves what they

doing here. Students need to be truthful to themselves. The decision made by that student is the core of the student's beliefs.

Lilly will do whatever he can to get them to reach that goal. He believes that if he himself goes off track in life, he needs to go back to the core and find out what's right for himself.

Lilly refreshes himself on weekends mentally and physically after a busy week of meetings with students and staff. His advice, "Enjoy the good life such as having a good balance of mental and physical activities, social life, and spiritual life or there will be disharmony."

Lilly said, "My philosophy is to apply Lōkahi, meaning balance and harmony. To strive for your existence, you have to be conscious of Lōkahi, or the spirit and unity of Lōkahi." Begin to focus on the needs of others and not so much on oneself, he advises.

Marathon-running educators

By Heikki Akiona
Staff Writer

Over the years, the number of entrants for the Honolulu Marathon has increased. Last month people from around the world came to Honolulu to compete and also take in the beautiful scenery along the marathon's course. A few faculty and staff members of Kapi'olani Community College competed in

the 1994 Honolulu Marathon.

Maureen Bogdanowicz, Instructor, Language Arts, and Larry Fee, Lecturer, Arts and Sciences did the 1994 Honolulu Marathon. Also, Provost John Morton finished the marathon in 4 hours 30 minutes. James Fernandes, Director, Gallaudet Center, finished in 5 hours 25 minutes. Fernandes and Provost Morton train together in the early morning three or four times a week. They started training in July

and August for the Honolulu Marathon. Eventhough the marathon is over, they still train every week.

Wayne Neidhardt, Assistant Professor, Math, finished the marathon in 3 hours, 19 minutes, and 37 seconds. This is the sixth time he has run in the Honolulu Marathon. For the last three years, Neidhardt has also done the Maui Marathon. Last year he did the marathon in Kona. Neidhardt trains all year round, running 60 miles a week.

Stars shine in 'Stargate'

By Estee Tanaka
Kapi'o Editor

In the early 1920's, archeologists uncover a circular tablet carved with early Egyptian script. The mysterious tablet is kept in a military base with a group of scientists who have been trying to decode the writings. The scientists are puzzled as to what purpose the tablet serves, until the team enlists the help of Johnson, an Egyptian linguist.

"Stargate" is a movie starring Kurt Russell that involves an ancient Egyptian artifact and its ability to transport people throughout the galaxy.

Johnson instantly tells them that they have a stargate. He decodes the stargate and the surprised military team sends a robotic camera through the gate, and they track its travels to a planet on the opposite side of the galaxy from Earth. The next step is to send humans through.

Johnson and a small military group armed with guns and survival kits enter the stargate and land in a pyramid on the other planet. To get back to Earth, Johnson has to de-

code the stargate. The only problem is that the group has to find a tablet which will help Johnson decipher the code on the stargate.

The group from earth then encounters a large slave colony who thinks that the visitors are sent from the sun god Ra. The slave colony takes the visitors in, feeds them and even arranges a wife for Johnson.

With the help of the slave colony, the group finds out about Ra, the sun god, who made the colony slaves and forbid them to read or write to prevent a rebellion. Ra hears about the visitors and decides to come to the planet himself.


Because the people from earth discovered and decoded the stargate, Ra plans on destroying earth.

With the help of the slave colony and Johnson's linguistic skills, the group finally manages to settle everything.

Surprisingly enough, this movie is really intriguing with its references to ancient Egypt. Filled with lots of action scenes and great special effects, this movie had me on the edge of my seat for two hours. This movie is highly recommended.

Resolution for the New Year

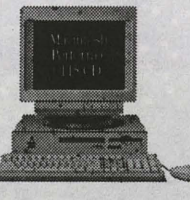
Get a Color Multiple Scan Monitor and a new Power Mac!



Power Macintosh 7100/80 CD
\$3896.00

Includes: 80 MHz PowerPC 601 processor, 8MB of RAM, 700 MB Hard Disk, and CD-ROM, Apple Multiple Scan 17 Display and AppleDesign keyboard and mouse.
Software: System 7.5

Only \$3412.00 with a Multiple Scan 15 Display!




Performa 6115 8/350 CD
\$2533.00

Includes: 60 MHz PowerPC 601 processor, 8MB of RAM, 350 MB Hard Disk, and CD-ROM, Apple Multiple Scan 15 Display and AppleDesign keyboard and mouse, 14.4Kbps Teleport Gold II Fax/Modem by Global Village Communications, Inc.
Software: System 7.5, eWorld, At Ease and Macintosh PC Exchange, Up To Date/Contact, ClarisWorks, Quicken 4, MacGallery Clip Art, Spin Doctor Challenger, MacLink Plus/Easy Open Translators 7.5, Click Art Performa Collection, American Heritage Dictionary 3rd Edition, Spectre Challenger.
On CD-ROM: Family Doctor, Around the World in 80 Days, New Grolier's Multimedia Encyclopedia, 3D World Atlas, Time Almanac, and KidSoft CD

With CD-ROMs, you pay no tax on hardware, and some on purchases. And with the **Apple Computer Loan Program**, you can own a Mac for **less than a dollar a day**. Now through Feb. 15, you can also defer payments for 90 days (get started right in the New Year).

POWER through it.



Apple

For more information, call the
University of Hawaii Bookstore
Computer Department
at
1-800-424-6202

THE UNIVERSITY
OF HAWAII
BOOKSTORE



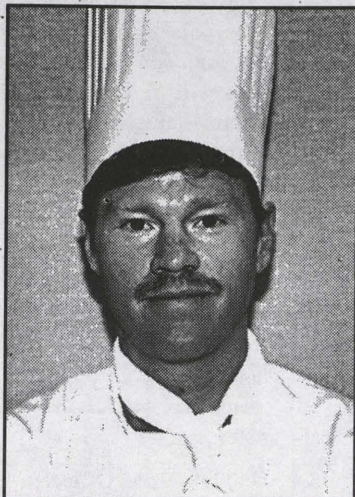
Inouye & Associates
Financial Services

Quality Financial Planning
Tax Shelter Annuities (403b)
Mutual Funds
Real Estate
Property Management
SEP-IRAs

**Call for Free '95 Tax Guide and
TSA Information!**

Tel: 537-1500 While Supplies Last
567 S. King Street Suite 178 Honolulu, HI 96813

Charles Whitney Smith scholarship a testimony to his desire to help others



Charles Whitney Smith

March 10, 1962 -- November 28, 1994

Charles Whitney Smith, Food Service baking instructor, passed away last semester.

A memorial service was held for him at Bellows Beach in Waimanalo.

The following are comments about Smith by his colleagues:

"Charles Whitney Smith celebrated life with vigor and enthusiasm. His adventurous spirit and sense of humor provided many wonderful memories. Whitney's battle with illness peacefully ended on the morning of Monday, November 28, 1994. Whitney's courage and determination throughout his life will be forever an inspiration."

Frank Leake
Department Chair

"He was easy to get along with and very agreeable. He didn't cause any trouble with his dealings."

Carol Uyemura
Store Room Clerk

"Whitney was a creative, talented artist. He possessed attributes that gained the respect and admiration of both students and his peers. His humble ways always allowed that special "lime light" to shine on them. He will be missed."

Gladys Sato
Prof, Food Service

"He had an untiring drive. He was so giving, and always had time for his students. During his short time at KCC he touched the heart

of everybody through the bake sale and his classes."

Helen Kim
Secretary, Food Service

"Whitney was very sharing and encouraged his students in the baking course. He had a very unique sense of humor. He had a knack for getting the students to give their best. In asking for advice from his colleagues he was very caring."

Ernst Hiltbrand
Baking Instructor

Whitney's gift to friends, students and colleagues was a passion for his profession as a Pastry Chef. After high school he received a scholarship to attend Johnson and

Wales Culinary School in Providence, Rhode Island. While at Johnson and Wales, Smith concentrated on baking and after graduation pursued a career as a pastry chef. Before becoming an instructor at KCC, Smith was employed as a pastry chef with the Hyatt Regency Waikiki.

In life, it was his dream to help others achieve their goals. To fulfill his dream, the **Charles Whitney Smith Memorial Scholarship Fund** has been established. The Food Service & Hospitality Education Department will be accepting contributions to make his dream a reality. For more information, please contact Frank Leake at 734-9485.

Pacific-Asian scholarship requirements changed

Eligibility requirements for the Pacific-Asian Scholarship have been changed and applications are being accepted until February 27 for Spring semester if funds remain available.

Those wanting to apply should be full-time students who are residents of Hawai'i or other Pacific, East Asian, or Southeast Asian jurisdiction. Applicants should have earned at least 12 credits and maintained a cumulative grade point average of 3.0 or better at KCC.

The scholarship is intended to provide relevant education and training to those who will assume positions of leadership, responsibility and service in the Pacific and Asian regions.

The award will consist of tuition waivers or reimbursements granted for one semester. Students may re-apply for a maximum of three years while pursuing a particular degree or certificate.

Those students interested should apply now. Applications are available at the Financial Aid Office, 'Ilima 102. Applicants will be notified of the results by mail.

KAPI'O

4303 Diamond Head Road
Honolulu, Hawai'i 96818
Phone 734-9120

Kapi'o is published every Tuesday by the Board of Student Publications of Kapi'olani Community College. It is funded by student fees and advertising and reflects the views of the editors and writers who are responsible for its content. Circulation is 3,000.

Kapi'o welcomes contributions to the paper. Editors reserve the right to edit all submissions for length, grammar and libel. Publication is not guaranteed. Advertising is welcomed. For more information on deadlines and ad rates, please call us.

Editors.....Estee Tanaka
.....Tom Wade, Heikki Akiona
Photo Editor.....Raymond Yuen
Staff.....Stan Fichtman,
.....Moriso Teraoka
Photographer.....Jim Vancil
Computer Tech.....Heng Xiang Huo
Adviser.....Wini Au



Hungry???

There's a new eating place that just opened

It's Called the *Local Chef* and
we're parked at Diamond Head Theatre

Good Food! Low Price!

Great Selection!

Opening January 11

Featuring "Shiro's Saimin" and



Now you have a choice
Come give us a try!



•OPEN: 10:00AM - 2PM•

•MONDAY THRU FRDAY•

PHONE ORDERS
ACCEPTED
542-0969

10%
DISCOUNT
WITH THIS
COUPON





Art

The UH Manoa Department of Theatre and Dance presents August Strindberg's symbolist drama "Dream Play" on Jan. 19 through 21. The play, directed by H.E. Schiller, explores the roles assigned to woman in a male-dominated society. For more information, call the Kennedy Theatre Box Office at 956-7655.

Bishop Museum presents "Journey By Starlight" on Jan. 13, and runs through June. It looks at the history of Polynesian explorations and how the sky may have been used by ancient navigators. The show will be at the Bishop Museum Planetarium. For more information, call the Bishop Museum at 847-8201.

Bishop Museum Conservation Clinic-make an appointment for a one-on-one consultation with a Museum conservator specializing in paper, objects and textiles. Bring in your old family heirlooms and Museum conservators will discuss the condition of each item and give suggestions for its care and preservation. Jan. 20, 9 a.m.-3 p.m. at the Bishop Museum. This is a free service but appointments are necessary, call 848-4112.

Dances We Dance Inc. presents the 8th annual Island Dance Festival '95 at Leeward Community College Theatre. The festival will feature a selection of Hawaii's finest dance companies in four unique and culturally diverse dance productions.

Hawaii's Dances- reflects Hawaii's unique global position of East meets West with rare dances of the Philippines, Okinawa, Cambodia, Hawaii, Turkey and Spain. Friday, Jan. 13, 8 p.m.

Honolulu Holiday- features kumu hula Olana and Howard Ai and their award winning Halau Hula Olana. Saturday, Jan. 14, 8 p.m.

Shapiro & Smith Dance- one of New York's most illustrious and spectacular modern dance companies. Friday, Jan. 20, 8 p.m.

Dances We Dance Co. & Friends- will conclude the Island Dance Festival 95. Saturday, Jan. 21, 8 p.m. and Sunday, Jan. 22, 4 p.m.

The festival runs from Jan. 13 to 22. Tickets are \$12, adults; \$10, students/seniors; \$4 children 12 years or younger. Subscription for all four concerts, \$33, adults; \$28, students/seniors; \$11, children 12 years or younger.

Tickets are on sale Dec. 9 at Hungry Ear Records & Tapes, Kailua, Wahiawa and Honolulu; Harry's music store, Step-N-Up Hawaii and Music Mac. For more information, call 537-2152.

The Honolulu Academy of Arts presents its recent photography acquisitions from now until Jan. 15. Photographers from Hawaii and the mainland are represented in the Graphic arts gallery. For more information, call the Academy at 532-8712.

The first production of the Kumu Kahua Theatre in the next year will be the Hawaii premiere of Jeannie Barroga's "Talk Story." The play celebrates the courage of Filipino-Americans as they face the challenges of prejudice and hardship in a new country. "Talk Story" will

play at the Kumu Kahua theatre, 46 Merchant Street, from Jan. 13 to Feb. 5. Reservations can be made by calling 536-4441.

Toys from Many Lands- Nov 29- Jan. 22. A holiday season treat for children from two to 92. A selection of unique and innovative toys from the Academy's main and lending collections: dolls, trains, folk-toys, games and antiques including an original teddy bear. Academy of Arts, Gallery 9.

Recent Photography Acquisitions- Dec 8- Jan. 9. From powerful portraits to hauntingly beautiful landscapes, these outstanding works of photography document different aspects of the human condition. Top mainland and Hawaii photographers are represented. Academy of Arts, Graphic Arts Gallery.



Activities

The Straub Foundation is accepting applications from college and university students who wish to participate as paid student researchers in its annual Summer Student Research Program. Student researchers are selected competitively and on the basis of overall qualifications, academic performance, interests and letter of recommendation. The program is open to graduate and undergraduate students pursuing careers in health and medicine. Students may obtain information and applications by calling Straub Foundation at 524-6755. The deadline to apply is a formal educational curriculum.

Volunteers in Public Service (VIPS) to the Judiciary Courts has a wide variety of opportunities for volunteers to work within the court system. Staff support positions include clerical aide, information guide, Judiciary History Center docent, court clerk aide and court orientation docent. Orientations will be held on Jan. 13, 21 and 24. For more information, call 539-4880.

Narcissus Festival kicks off on Jan. 14 with the Narcissus Pageant. The public celebrations include a Jan. 21 parade from the State Capital to 'A'ala Park, Jan. 27 Chinatown Open House and Jan. 28 cultural events at the Chinese Cultural Plaza, noon to midnight, including stage performances and food booths. For more information call the Chinese Chamber of Commerce of Hawaii at 533-3181.



Classes

The following classes are presented through Kapi'olani Community College's Office of Community Services. Contact Nora Furuno at 734-9443 for more information.

From Stick Figures to Picasso- A drawing course designed to destroy your preconceptions about learning how to draw. Enrich your observations and develop confidence in you ability to visually record your environment. Exercises will be done primarily with graphite pencils. A class for novices. Jan. 31-March 14; 6-9 p.m. Course fee: \$74 plus material fee.

Watercolor painting- Art concepts in painting along with various techniques in experimenting,



Shapiro and Smith Dance

Photo by Tom Caravaglia

applying and executing transparent watercolors will be taught. Students will be responsible for supplies, a list will be provided at the first session. Tuesdays, Jan. 24- March 14; 9-11:30 a.m. Course fee: \$70.

Basic Art- An introduction to a potpourri of activities through drawing, painting, pastels, collage and more as time permits. Students will be responsible for supplies. Tuesdays, Jan. 24- March 14, 12:30-2:30 p.m. Course Fee \$70.

Hawaiian Slack-Key- Walter Carvalho introduces kiho'alu or traditional slack-key guitar to beginning and continuing students. Students must bring their own guitar, no prior experience necessary. Tuesdays, Jan. 17-March 7; 6:30-8 p.m. Course fee \$75.

Intermediate Hawaiian Slack-Key- Emphasis on additional tuning, chords and slack-key numbers. Students will be provided with appropriate music to increase their repertoire and understanding of traditional Hawaiian slack-key guitar. Prerequisite: knowledge of basic slack-key required including the ability to read and understand tablature. Wednesdays, Jan. 18-March 8; 6:30-8 p.m. Course Fee \$75.

Free lecture on buying your first computer- Basic computer components, comparing newspaper advertisements, the right questions to ask the sales person, do you need a fax, modem, network and more will be discussed. Thursday, Feb. 2; 7-8 p.m. Kapi'olani Community College Chapel. Free.

Three Shakespeare Plays: Much Ado About Nothing, Hamlet and Henry V- A study of each play's structure, imagery, humor, poetry, dramatic and theatrical characteristics. Thursdays Feb. 2-16; 7-9 p.m. Course fee: \$25.



Music

Top ten singles from Tower Records as of Jan. 2, 1994.

1. Boys II Men- On bended knees
2. Ini Kamoze- Here comes the hotstepper
3. Real McCoy- Another night
4. Bon Jovi- Always
5. Boys II Men- I'll make love to you
6. TLC- Creep
7. Madonna- Secret
8. Sheryl Crowe- All I wanna do
9. Brandy- I wanna be down
10. Janet Jackson- You want this

Listing of performances for Java Java Cafe-

Monday, Jan. 9; 8:30-10:30 p.m. Cantabile String Quartet will play violins.

Tuesday, Jan. 10; 8-10 p.m. Kiptet will play Balkin Folk Music

Wednesday, Jan. 11; 8-10 p.m. Vernon Salata with Friends will hold a jazz jam.

Thursday, Jan. 12; 9-10:30 p.m. Douglas Frank will be playing classical, slack-key and flamenco.

Saturday, Jan. 14; 9-11 p.m. Frog Child will be playing some grooving funk. \$2 cover charge.

Sunday, Jan. 15; 5-7 p.m. Ho'olono will be playing some local style tunes.



Workshops

Attention Hawaiian Students What: Financial Aid Workshop By whom: Native Hawaiian Project at KCC and Kamehameha schools Scholarship Program.

When: Mon, Jan. 9; Thurs, Jan. 26; Wed, Feb. 1.

Where: all meetings will be held

in the 'Ohia 118 conference room Time: 10a.m.-12p.m., 10a.m.-2p.m. and 5:30-7:30p.m.

There will be an overview of financial aid resources for Hawaiian students. However, the emphasis will be on completion of the Kamehameha application. Bring any questions you have. If you are unable to attend any of the scheduled sessions but would like more information, contact Mike Ane at 734-9554 or drop by 'Ilima 103.



Jobs

These jobs are from a list in the Job Placement Office, in 'Ilima 103, for more information on more jobs contact Gemma Williams at 734-9500.

Clerical Job #3413

General filing, answering phones, and skip tracing, part-time. Type 45 wpm, 10 key, car, license. \$6.50/ hour.

Classroom Cleaner Job #3404

Reliable person needed to do light cleaning, dusting, sweeping. Work M-F, 2:15-4:15 pm or 3-5 pm. \$6/ hour.

Golf Tour Reservationist Job #3418

Reliable, punctual, needed to book golf tours, type, dispatch, paper work, and radio communication w/ drivers. Work 9 am- 6 pm; Sat. and Sun. only. \$7/ hour.

Accountant Job #3417

Bookkeeping, lotus, WP, taxes. 10 key, two year experience. M-F, 8:30am- 5:30pm \$2100/ month.

Airport Host/ Greeter # 3416

Friendly, out going, reliable, trustworthy person with good communication skills to meet arrival flights at Honolulu Airport to greeting international tourists w/flower leis. Part-time. \$5.25/ hour.

Student Helper Job #3414

Full-time legal resident student of Hawaii to assist at circulation, and library work. 19 hours per week, flexible. \$6.50/ hour.

Book Store

Monday through Friday 8 - 3:30 p.m.

Wednesday open 8 a.m. - 7 p.m.

Jan. 27 is the last day to return textbooks for a full refund (receipt needed)

LAC

The Learning Assistance Center, 'Iliahi 228:

Mondays-Thursdays 8 a.m. - 4 p.m.

Saturdays 9 a.m. to 1 p.m.

Sundays and Holidays closed

Health and Natural Science Learning Assistance Center

Koki'o 202:

Mondays - Thursdays 8 a.m. - 7:45 p.m.

Fridays 8 a.m. - 4 p.m.

Saturdays 9 a.m to 1 p.m.

Sundays and Holidays closed

Business Education Learning Assistance Center

Kopiko 101:

Library:

Mondays - Thursdays, 7:30 a.m. - 9 p.m.

Fridays, 7:30 a.m. 4 p.m.

Saturdays, 8 a.m. - 1 p.m.

Sundays and Holidays closed

Computing Center

Monday, Wednesday, 8 a.m. - 9p.m.

Tuesday, Thursday, 8 a.m. - 8 p.m.

Friday, 8 a.m. - 4 p.m.

Saturday 9 a.m. - 2 p.m.

Sundays and Holidays closed

Students must present pink slip at the window and provide their own paper for the laser printers.