



kapiolani

Volume 19 No. 3

Kapiolani Community College

September 8, 1987

In this Issue...

- KCC receives \$150,000.....pg. 1
- A male nurse at KCC.....pg. 2
- Food choices on campus.....pg. 4
- A summer in Scotland.....pg. 5
- 11 new faculty.....pg. 6
- Captain KCC returns.....pg. 7



Honors group elects officers

By Clemen Montero

KCC student, Donna Ching, was elected president of the Phi Kappa Psi Chapter of Kapiolani Community College.

Other officers are: Suzanne Lobenberg, vice president; Clinton Tsukano, treasurer; and James Ryan, secretary.

Phi Theta Kappa is an honor fraternity for institutions offering accredited associate degree programs.

Eleven students have been accepted into the KCC honors program for this semester. They are: Monica Everson, Laurie Fillingame, Suanchoo Lim, Suzanne Lobenberg, Alice Mitchell, Clinton Tsukano, Laverne Nishida, Neal Oribio, Julie Sherman, Robert Sloan, and Lyle Toyomura.

These students were required to have a 3.5 grade point average, and must be currently enrolled at Kapiolani for 9 credits, as well as other requirements.

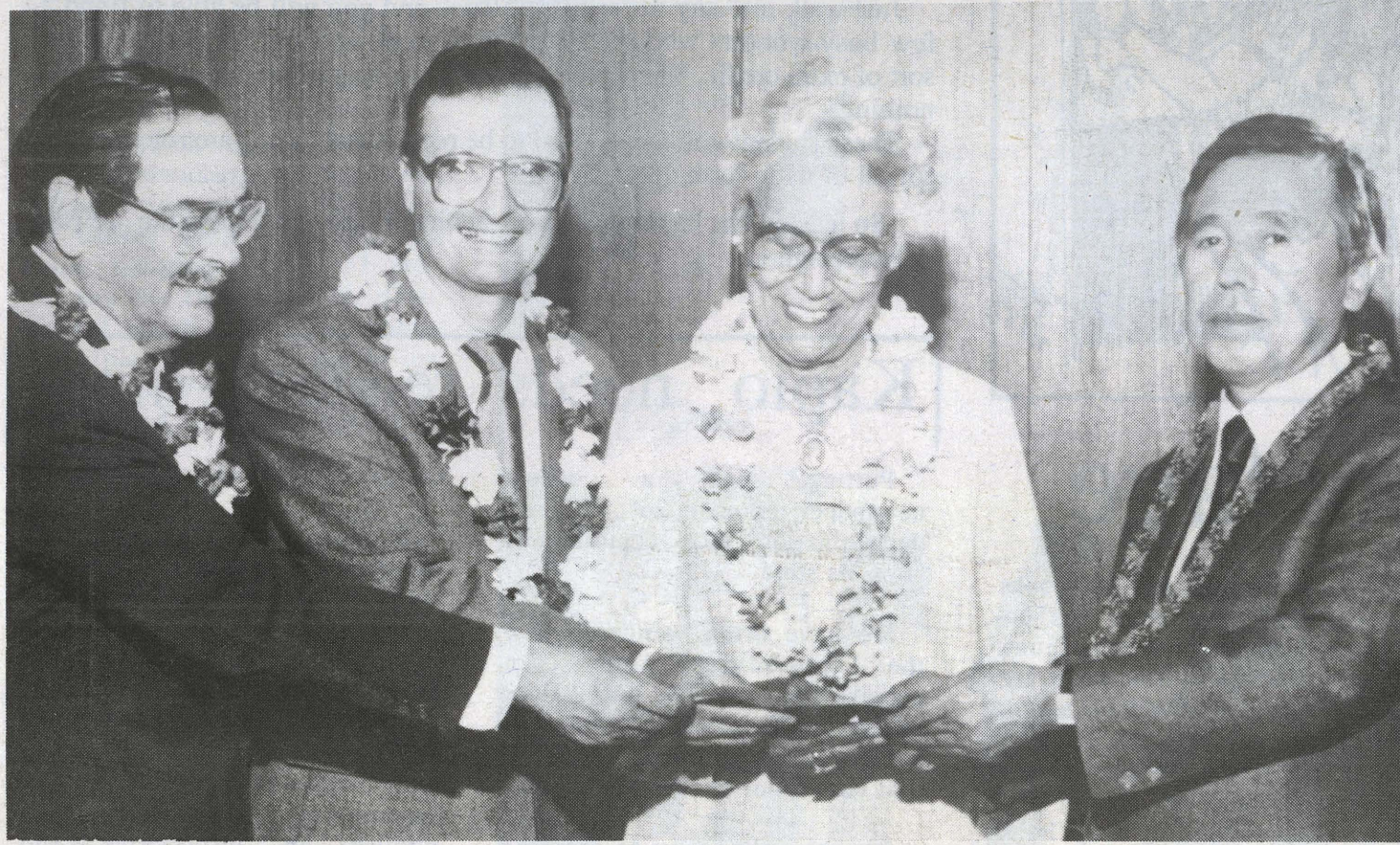
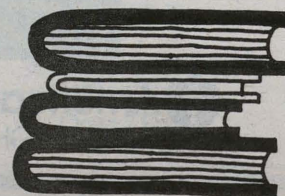
Upon entering Kapiolani, these students would have had to fulfill two of the following requirements: graduation in the top 10% of his/her high school class, a score of 15+ grade equivalent on the English Placement Test and placement in Math 130, or an ACT score of 27 or a SAT composite score of 1,100.

The DH Library is open:

Mon. to Thurs. 7:30 am-9 pm
Friday 7:30 am - 4 pm
Saturday 7:30 am - 1 pm
Closed on Sunday and holidays.

Pensacola Library:

Mon. to Fri. 7:30 am - 4 pm
Closed Saturdays, Sundays and holidays.



From left, Manny Sylvester, chairman of the UH Foundation; Dr. Albert Simone, UH President; and Gladys Brant, chairperson of the UH Board of Regents accept a \$600,000 endowment award from Kitaro Watanabe, with \$150,000 to go to KCC for programs related to tourism.

KCC receives gift of \$150,000

By Milton Miyasato

Kapiolani Community College will receive a \$150,000 endowment to establish the Kitaro Watanabe Tourism Training Series.

The series will provide lectures, seminars, workshops, and study materials for students and employees in the visitor industry.

This training series also will provide instruction in new

technologies affecting the industry in the food service and hospitality education.

The endowment is part of a \$600,000 contribution made by Kitaro Watanabe, the founder and president of the Azabu Group of Tokyo. The contribution was made through the Kitaro Watanabe Fund established in July. The gift is to be used to establish the Kitaro Watanabe Visitor Industry Training Programs.

At a press conference last week, Watanabe presented UH President Albert J. Simone with a \$200,000 check. The first of three to be donated annually.

Besides the endowment to KCC, \$300,000 will go to the establishment of the Kitaro Watanabe Distinguished Visiting Professor in Tourism Program at UH-Hilo. \$150,000 will go to the Kitaro Watanabe Tourism Collection in the Sunset Library, School of Travel Industry Management, at UH.

New library cards essential

By Jerel Wakayama

In the past, to check out library books, students had to go through the tedious task of filling out lengthy forms. Librarians, too, had to wade through much red tape for a simple check on a student's borrowing credit.

Time-consuming paper work and filing seemed a part of a librarian's routine, but now, with computers, our borrowing process will be much simpler and quicker.

Computer bar code cards

(numbered) will be issued to all KCC students.

Mary Marko, the reference librarian at D.H., who has been working at KCC for the past 11 years is optimistic about the new scheme. She says that after the hectic task of issuing numbers to the students, the process will be much easier for the librarians.

She pointed out, that the new system is only a few days old. But still "no complaints have arisen yet," she said.

Students can use the terminals to find information on their

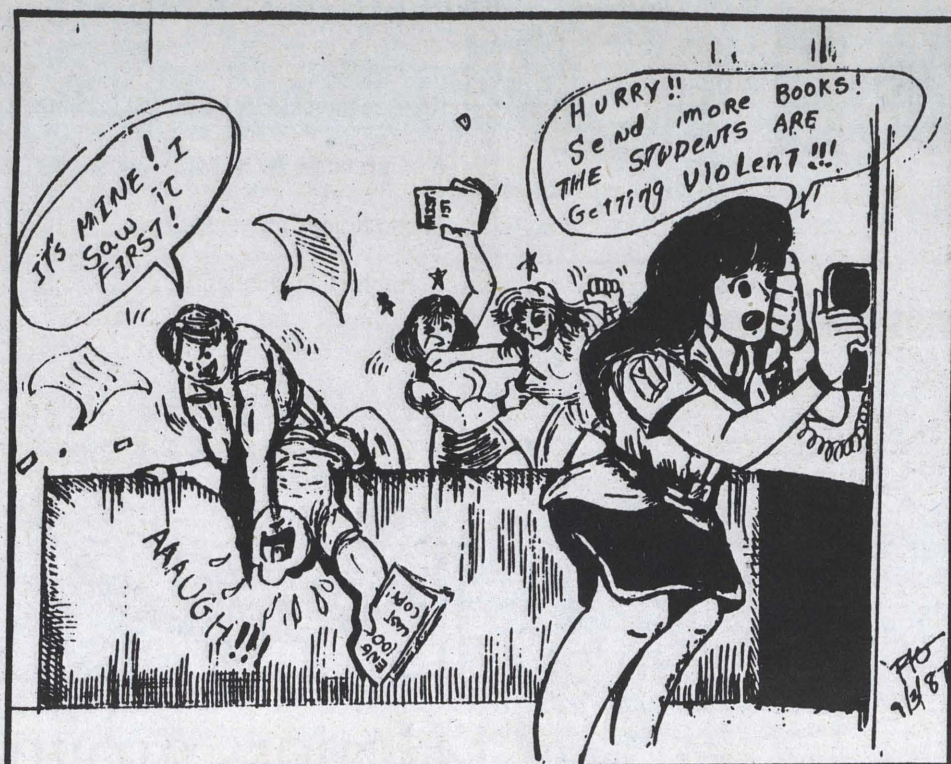
own. Each computer contains information on how to use it.

Someday, Marko said, all of the terminals will be linked with all State of Hawaii University libraries."

In order for you to obtain your personal library card:

- 1) Fill out a form (can be obtained from the front desk)
- 2) Turn it in to any librarian

Marko says that the card will be available for pick-up within a week.



Book Shortage

At KCC a great number of obstacles must be hurdled to become a student.

There is the application process where you have to provide proof of your residency in Hawaii. The most often used piece of evidence is a paper showing you or your parents have paid state taxes the previous year.

Next hurdle is the TB Test. This is free in many places, but takes two days to be okayed, and means more standing in line. It is relatively painless, but can be a pain in the butt.

Once you have proved you are a healthy resident there is still the joy of registration. Many returning students took advantage of the new mail-in registration. This saved them much time and stress.

New students, unfortunately for them, had to scratch and claw their way through in-person registration. If you're lucky, you might actually find three or four open classes that you actually want.

If you make it through all of this, there is still the quest for

books. Searching for textbooks at the KCC Bookstore has become something of a snipe hunt. Many of the required texts are only sporadically available.

Having to wait a month into the semester before obtaining the book would put the best of students into a six feet deep hole, and let's face it, most people at KCC are not here because they are the best of students.

The administration knows how many students are enrolled here, and should be able to project how many books are going to be needed. You would think it would make more sense to overstock and either save the surplus for next semester or return the extra books to the company, rather than making the student suffer. Yet this is not the case at KCC.

Used books are sold at a ridiculous 75% of their new price, but are bought back at only 25% of their original cost. This seems like a rather large profit at the expense of people who don't have much choice. With mail-in registration making registering a simpler task, maybe the bookstore is next.

Salute to volunteers

Would you do a lot of work for nothing at all? Put in a lot of time and effort into a job you would never get paid for or get credit for? Spend more time at school than you need to?

Most students have a hard time staying at school when they must be there, let alone staying when they don't have to.

However, numerous students have been donating their time and talents, semester after semester, here at KCC.

Just walk into any department office and you will be able to find a few busy workers who aren't on the payroll and are not getting some sort of extra credit. They get no rewards, no special treatment in school, nothing.

These student volunteers need to be recognized. They are role models for all of us to look up to.

So let's tip our hat to these over-achievers, and give them the reward of appreciation.

Kapio needs readers' input

Putting out a college newspaper takes a lot of grim determination and commitment from its staff.

We have often wondered how the University at Manoa can manage to put out three newspapers a week and why we are struggling to publish a paper that comes out once a week.

It's not right for us to compare the Kapio with Ka leo. However, Ka leo has one characteristic that we hope Kapio will have and that is the students' input.

The Kapio's staff would like the students and faculty members to communicate with each other. One main reason is for us to know what our readers would like to see published. Another reason is for the Kapio to find out what opinions our readers have on issues and on the quality

of KCC's newspaper.

If you would like to respond, we have a mailbox in Iliahi's mailroom or you can drop your suggestions off at the Kapio room located next to Koa in building 923, adjacent to EMC. Someone is there every day and staff members often stay from 8 a.m. until after midnight, all because we are determined to publish an informative and entertaining college newspaper.

We would greatly appreciate it if you would take your time and write us a note of your opinion on what you would like to see in Kapio.

We thank the students and faculty members who have been corresponding with us.

Clemen C. Montero
Managing Editor

Aloha Week

Aloha Week starts on the 18th of September through the 27th. Buttons and ribbons may be purchased for \$2 at most shopping centers.

Proceeds will fund the activities during the special week.

Azabu gift

We, at KCC, are thankful to Mr. Kitaro Watanabe and the Azabu USA Corporation for the \$150,000 endowment to fund tourism training on our campus.

The training series will be provided by lectures, seminars, workshops and study materials for both students and current employees in the visitor industry.

The series also will provide instruction in new technologies affecting the industry, in both food service and hospitality education.

kapio

Kapio is published every Tuesday by the Board of Student Publications of Kapiolani Community College. It is funded by student fees and advertising and reflects the views of its editors and writers who are solely responsible for its content. Circulation is 2000. Kapio welcomes contributions to the paper. Editors reserve the right to edit all submissions for length, grammar and libel. Publication is not guaranteed.

Editor-in chief.....Karen Loeb
Managing Editor.....Clemen Montero
Copy Editor.....Mike Lovell
Copy Readers.....Stan Lum
Stewart Anderson
Advertising Manager.....Ivan Young
Staff.....John Neeson, Chanse Billings,
Kimmie Chow, Milton Miyasato
Reporters.....Corinne Ching, Sementa
Bach, Sammy Samonte, Megan
Harrington, Michele Mackenzie
Photographers.....Lance Kamisugi
Craig Barnhouse
Cartoonist.....Flo Lim
Typist.....Tracey Tokuka
Circulation.....Chizuko Ueyehara
Adviser.....Louise Ondrik

No gain.No pain.

Keeping your weight at a moderate level may scale down your risk of heart attack. So maintain a healthy diet and lighten up on your heart.



 **American Heart Association**
WE'RE FIGHTING FOR YOUR LIFE

KCC has variety of places to eat

By Corinne W.L. Ching

"Where to grind?" - this is the question. When attacked by the munchies, look to the following places on campus:

Pensacola campus - three eating places are available: the Student Cafeteria/Lanai (self-serve), which offers hot and cold sandwiches, snacks and drinks. Prices start at 90 cents, the Coffee Shop (walk-in), has prices ranging from \$1.75 and up, and the Dining Room, (fine dining) which is by reservation only (ph. 533-6142). Meals are available starting at \$5 and up. The Dining Room is open for dinner also.

According to Gladys Sato, chairperson of the Food & Service Department, the Dining Room will be open to the public Sept. 9 for dinner and Sept. 15 for lunch.

And what about the Diamond Head campus?

For students on the go who don't mind food from the refrigerator, the "Mr. Subs Sandwiches" stand, next to the vending machines, offers bento, sandwiches, saimin, and more. The stand is a family corporation by the Hong family, of the "Mr. Subs" chain from Aiea.

Then we have Suki's Kitchen, affectionately known as the "Diamond Head Cool Spot". With gravel and tarpaulin donated by the Student Congress last year, this eatery proves to be a favorite for those wanting to relax with fresh, hot, plate lunches starting at \$2 and up.

HCT needs student help

All UH Community Colleges' student organizations are being asked provide volunteer help as a community service for the upcoming Honolulu Community Theater's Chili Cookoff fundraising event scheduled for Sunday, October 11, 1987 from 4:00 - 9:00 p.m. at the Ward Industrial Center on Auahi Street.

Help is needed to run the contests which are part of the promotional activities. four different contest events are planned: Best legs - men and women, Hog Calling, Cow Chip Toss and Dunking Booth.

Please contact Ralph Ohara no later than Friday Sept. 11, 1987.

EARN EXCELLENT MONEY

In Home Assembly work.
Jewelry, Toys & Others. FT & PT Avail.
CALL TODAY! 1-518-459-3546
(Toll-Refundable) DEPT B 3495H 24 Hrs



Students line up to get a quick lunch or snack at Mr. Subs in the food court.

Photo by Craig Barnhouse

The owner, Herbert Suzuki, and his sister, Emiko welcome student clubs to use their facility to hold student club meetings - refreshments can be provided.

Interested clubs may contact Mr. Suzuki at the Diamond Head Cool Spot. Part-time student help is wanted to help cover the lunch rush, hours 10:30 to 12:30 p.m.

In the future, KCC can look forward to a new cafeteria on the Diamond Head Campus, and by the summer of '88, a new snack bar.

Hours of Operation

Student Cafeteria/Lanai: Mon - Thur, 7:15 am - 2:00 pm
Fri. - 7:15 am - 1:30 pm

Coffee Shop: Tues - Fri, 11:00 am - 12:30 pm

Dining Room: Lunch Tues - Thur, 6:00 - 8:00 pm
Dinner Tues - Thur, 6:00 - 8:00 pm

Mr. Subs Stand: Mon - Fri, 7:00 am - 2:00 pm

Diamond Head Cool Spot: Mon - Fri, 6:00 am - 5:00 pm
Sat, 6:00 am - 2:00 pm*

*later depending on customer flow.

WHITE MOUNTAIN ICE CREAM

REAL ICE CREAM
Made in Hawaii Daily,
The Olde Fashioned Way

FREE
Add In or Toppings
with Dishes or
Waffle Cone

819 Kapahulu Ave. 2139 Kuhio Ave.
734-8754 922-7791

Coupon Expires 9/13/87

EXPERIENCE COPY SERVICE AT ITS FINEST!

We specialize in satisfying your complete copying needs, passport photos, business packages using Laser typesetting, and more!

PRESENT YOUR STUDENT I.D. BEFORE MAKING PURCHASE TO RECEIVE A 10% DISCOUNT



Dittos

Great copies. Great people.



STOP IN AT EITHER OF OUR LOCATIONS

2570 S. Beretania St.
943-0005
Open 24 Hours

833 Kapiolani Blvd.
531-0544
Open 7 Days

Fall brings old fashions for new generation

By Karen Loeb

Taking a look around campus, Kapio has found out what students are wearing from head to toe.

Because of the extremely hot weather Hawaii has been experiencing, the cool look is in! Tank tops and shorts that come down to a little above the knee.

Guys still have a rope of gold hanging from their necks and rubber slippers under their feet. Dangling earrings for both sexes, take your pick.

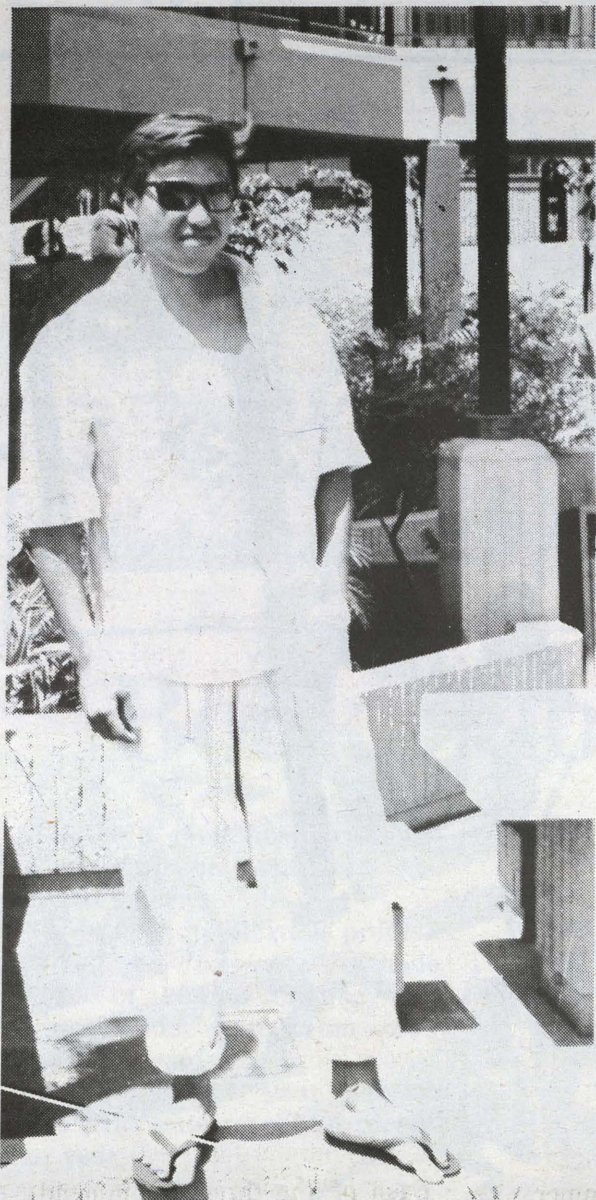
The denim look is everywhere. From jeans to skirts to tops to dresses, the campus is loaded.

For those students who work part-time, you can catch the girls in sweater tops and long straight cotton skirts.

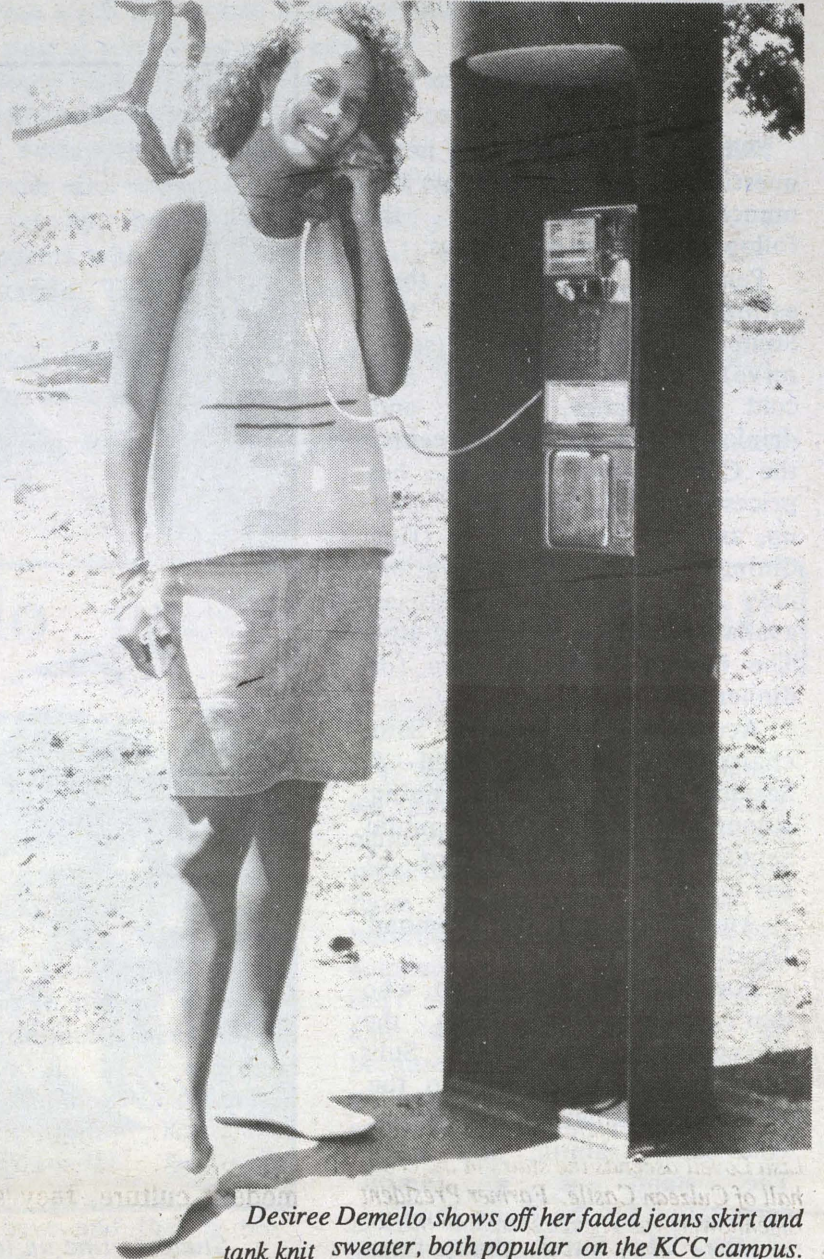
Surf's up. Many surfers are out there, and they are wearing the latest from Jimmy's and, of course, the button-down shirts with the tails. Sera Surf, Town and Country, and HIC are the stores to hit for the local look.

The main brands to look for: Generra, and US Boys. A few fads are making their way across the ocean from California. Girls in men's boxer shorts and tennis shoes with no laces will be things to look for next semester.

Photos by Craig Barnhouse



Brian Kwon looks sharp in his rolled up pants and high collar top, not to mention the G.Q. shades.



Desiree Demello shows off her faded jeans skirt and tank knit sweater, both popular on the KCC campus.

Fall fashions explode

By Michele Mackenzie

Fashion this fall is exploding with new and revised styles, unexpected color mixes and outrageous patterns.

Mini skirts and dresses are booming back brighter, tighter and sexier than ever. You can find a mini almost any way you want it. From the tightest

stretch fabrics to the fullest taffeta and lace in bright colors and deep blacks.

For all you denim lovers you'll have no problem finding your passion, this Fall everything's coming up in denim and every form imaginable:

For the guys, the beat generation look is back--head to the thrift stores and grab some

khakis, tailed oxford shirts and striped tees. Or if you prefer the G.Q. look, check out Generra, Ton Surton, Calvin Klein, and Gorgie Armani. Just a few with fabulous fall lines.

Movies influence fashions

By Karen Loeb

Movies are a big influence in the fashion world. If it wasn't for "Out of Africa", the safari look might have never come around and Banana Republic would be out of business.

Wanting to look like a famous person or just to be in the "in crowd", makes what celebrities wear spread throughout the continent faster than a disease. What the public sees, they like, and what they like, they buy.

"An Officer and a Gentleman" made girls squeal for men in uniform. How about "Purple Rain" and Prince? The paisley look was stimulated and a Morris

Day type jacket was a must for every fan.

After Madonna showed America that it was cool to wear at least 20 bracelets at a time, every female teenager in the USA just had to follow the fad.

Remember Michael Jackson's one glove, and Boy George's long over coats?

"Wham" brought to America giant T-shirts with giant letters and that fashion trend is still growing.

Where does it all end? As long as there will be newcomers in TV, movies, and music, the fashions have only begun.

Tour Drivers/ Office Clerks

For An Expanding
Japanese Tour Company

Great Place To Start In
The Tourist Industry

Bilingual Preferred,
But Not Necessary

Excellent Benefits!

Now Hiring/Call Now

MAHALO EXPRESS

Neal/ 942-8824

COPIES
3 1/2¢

with student I.D.
(LOOSE 8 1/2 X 11)

KINKO'S

1019 University Avenue
(Inside Puck's Alley Courtyard)

949-4516

BerDel
Guarantee Straight A's!

WE FEATURE
FINE EYEWEAR BY
VANT-GARDE

Just a Whistle Away!

Be a Big Hit on Campus:

with Fashion Eyewear or
Colored Contact Lenses

Dr. Glenn Shigezawa
Optometrist

Standard Soft
Contact Lenses
(Includes follow-up care kit)

\$75

Convenient Location Across Pensacola Campus
Blackfield Hawaii Building Penthouse 20

1221 Kapiolani Blvd.
Honolulu, Hi. 96814

Call 524-0111

Validated Parking Available

Student travelers find Scotland fascinating

By Megan Harrington

Three KCC students, Stewart Anderson, Lisa Lovell and John Neeson, visited Scotland this summer.



Lisa Lovell ascends the stairs in the central hall of Culzean Castle. Farmer President Eisenhower was given quarters in this west Scotland Castle to use during his lifetime.

Anderson, who was raised there, said he "saw the country through new eyes." He said Lovell, his girlfriend, who was there for the first time, helped him through her very presence. To look at "The architecture, the countryside -- even the sky" in a way which he had never before.

Because of Lovell, Anderson "tended to visit historical museums and castles," feeling, for the first time "... something in me that is as old as the stones ... I felt very solid."

Lovell and Anderson toured the Scottish Highlands and visited an ancient castle. The lady of the castle greeted them on her way out to do the garden-

"Go in (to the castle) and have a look about ... don't mind the dust," she said.

Her good natured down-to-earth attitude reflected the warmth of the Scottish people, which impressed Lovell, in particular.

Visiting Edinburgh they found a castle built on a gigantic rock, surrounded by the city.

The ancient buildings of the city provided a contrast to the modern culture, they said. "The people of the city are very up-to-date on the newest music and



Stewart Anderson stands on Oswald Bridge over the River Ayr from which Scottish poet Robert Burns drew inspiration.

avant garde styles," said Lisa. The capital of Scotland, Edinburgh is known as "The Festive City". It attracts many types of people, especially those who enjoy the nightlife scene.

Lovell said, "Scotland has some of the world's best beer," a claim which Anderson had no argument with.

John Neeson, another KCC student who spent the summer in Scotland, enjoyed the night life along with about 60,000

other people. Five-band festival was held in a Edinburgh rugby stadium. U2 was the headlining band; the Pogues, The Mission, and Love and Money were a few of the other bands there. Shane McGowan, the lead singer of the Pogues, said Neeson, has "really rotten teeth, and the audience threw toothbrushes at him" -- a rather rude display, but extremely humorous.

Each of the three recommend Scotland as a fascinating land to visit.

New development changes perspective

By Rose Layogen

"Rrring!" The alarm clock screams. It's 7:30 am and another school year has begun. So, or let me guess, you're finding it hard to get back "into the groove" after the summer. Well, you're not alone. Take for an example, Nerrad E. Smith.

Nerrad Smith is the average KCC student. He has attended KCC for a year, and he enjoys the atmosphere here. Every night after work he goes home, studies, and sets his alarm for 7:30 am. Which brings us to ...

"Rring!" "Nerrad, get upz NOW!" yells his mother. Nerrad opens one eye and with all the strength he can muster this early in the morning, smashes the alarm clock. Back to sleep! "Nerrad get up, you're late!"

He immediately dives into his clothes, jumps into his car and

speeds off to school, totally disregarding the rules OR (in total disregard of the rules of the road).

Nerrad somehow makes it safely to the lower campus parking lot. But, he's a little late and there is nowhere to park. So, he waits ... and waits ... and waits.

Just when Nerrad has uttered the last expletive he knows of, and is vowing to withdraw from school if someone doesn't leave soon, a car pulls out. But, can he get there in time? The future of his education depends on that space. Se, he darts off. He zigs and he zags.

He stares and he growls, and finally with that "eh, brah, I stay hea firss" look on his face, Nerrad proclaims himself a student of the Fall '87 semester.

Nerrad runs to class. As he walks in, everyone stares at him. They continue to stare until he sits down. A pink flush covers his face. The teacher asks, "Are you Nerrad Smith?" He nods as the pink flush now becomes red.

The weather outside is warm, the sky is blue, the birds are chirping; yet, Nerrad is in class. What a waste of a perfect day. Nerrad is getting antsy and stares at the clock. He tries to take notes, but all he can think about is that perfect wave

breaking on some beach out there without him. Finally, class is over.

Psychology is next. Nerrad sits in the back. It's hot and all he wants to do is go to the beach.

Then ... she walks in, the perfect "10". She sits down and asks Nerrad, "Is this Psychology 100?" Nerrad nods meekly. A smile breads over his face. AAAh, school has started, and he can't wait for the next four months.



LOWER YOUR TUITION & TEXTBOOK COST! SCHOLARSHIP & FINANCIAL AID SERVICES OF HAWAII

Providing College Financial Help for High School,
Vocational, College and Graduate Students

We GUARANTEE to lead you to money for college or
your money refunded.

For more information and application Call 942-3786, Ext. 838
1750 Kalakaua Ave. Suite 3-838 Honolulu, Hi. 96826

Rhema
CHRISTIAN BOOK CENTER
Serving Hawaii Since 1978

1311 Kapiolani Blvd., #106
Honolulu, Hawaii 96814
(808) 531-2240

Corner of
Kapiolani & Pili

Gifts
Tapes
Videos
Records
Plagues
Children's Books
Study Guides
Stationery
Bibles
Cards
Books
CDs

Contemporary - Convenient - Complete

New Faces**KCC adds 11****full-time faculty**

By Clemen Montero

Eleven new full-time instructors have joined the KCC faculty this semester.

Faculty members Doretta Masui, Naithon Shinken, Wayne Neidhardt and William Swyter are from the Math Department, and Meena Sachdeva and Sandra Tawake, from the English Department.

Other instructors are; Teh-Min Brown, Developmental Studies; Faith Dean, Food Service; Robin Fujikawa, Philosophy and Religion; Francis Noji, ESL; and Julie Ranada, Data Processing.

Three new staff members are also added in the Media Center: Hymie Abela, Electronics Technician; Monte Hickok, Media Specialist; and Kathy Hara, Instructional Developer.

Shanon Miho is KCC's new counselor at Student Services.

According to Provost John Morton, 1987, KCC has 5,333 registered students. This number surpasses the enrollment of last Fall.

HPD recruits police officers

By Chanse Billings

If you are a high school graduate or have a G.E.D. certificate, are 20 years old by Dec. 31, and have a valid Hawaii State driver's license, the Honolulu Police Department will accept your application for the position of Metropolitan Police Recruit.

Applications are available at satellite City Halls. All information provided will be verified.

Mail the completed application, or bring it in to the Dept. of Civil Service, City Hall Annex, 550 S. King St., Honolulu, Hawaii 96813.

Recruits are paid \$1,718 per month and are eligible for a promotion to Metro Police Officer after one year at \$1,929 per month.

Eligibility will be based on a

written, medical, and physical condition test. (Veterans will have points automatically added to their scores.)

Written tests will be given only in Honolulu, on Nov. 14, 1987.

For more information, feel free to call Douglas G. Gibb, Chief of Police or Captain Robert L. Silva, Personnel Division at 943-3336.

15 tons**Crane falls at KCC gate**

By Karen Loeb

A 15-ton crane fell over last Wednesday at the Diamond Head entrance to KCC, as it was being loaded on to a trailer.

No one was in the trailer at the time but the man driving the crane was injured and was rushed to the hospital. The trucks, from the Pan-Pacific Construction Company, were being used for construction on the new buildings. There were a few damages done to the new parking lot.



Photo by Karen Loeb

Doag outnumbered

By Sammy Samonte

Russell Doag, a transfer student from UH-Hilo, is the only male in the legal practical nursing program at KCC.

Doag studied liberal arts for two years. His first interest in nursing occurred when he was hospitalized with a football injury.

"The nurse that helped me was male," Doag said. He has an interest in helping others during his spare time, for example, working for the Easter seals on the Big Island.

Doag wanted to enter a field in which he could help others. Physical Therapy sounded good

to him, but when he found out how long and where he would have to go to school, he said, "Six to eight years, no way!"

Doag is also working as a nurses aide at Medical Personnel Pool. Being the only male in class, he was shocked. "I waited for other males to come into the room but none showed up, so I kept silent. I felt like a minority," he said. "The girls always want to help me and I used to feel nervous," he said. "I would like to see other males in the program."

Doag said he feels that if someone really wants to help others, the nursing program is a good way to begin.

Hawaii's Community Colleges Have a New Financial Friend

United Resources Insurance Services, Inc., is a member of a diversified financial services family and is a subsidiary of Integrated Resources—one of the nation's top financial services corporations. We specialize in the financial needs of Hawaii's community college employees, and we have a host of products and services to offer you.



Call
Noreen Clement
Financial Services
Manager
396-3355

- Permanent and Term Insurance
- Employee benefit programs
- Pension products
- Tax-sheltered annuities (variable and fixed)
- Tax-sheltered annuity loans
- Key person and executive compensation programs
- Mutual funds
- Limited partnerships
- Trust services
- Asset Management Programs
- Money Market Accounts and CD's
- Retail brokerage services

And that's not all we offer. A free tax planning handbook (\$10.95 value) is yours for the asking.

UNITED RESOURCES
The Knowledge Broker

Nursing Positions (Students)

Immediate Openings Available For Students In The Various KCC Nursing Programs (LPN, Nurse Aide) Personal Care Aide & Home Health Aide Positions).

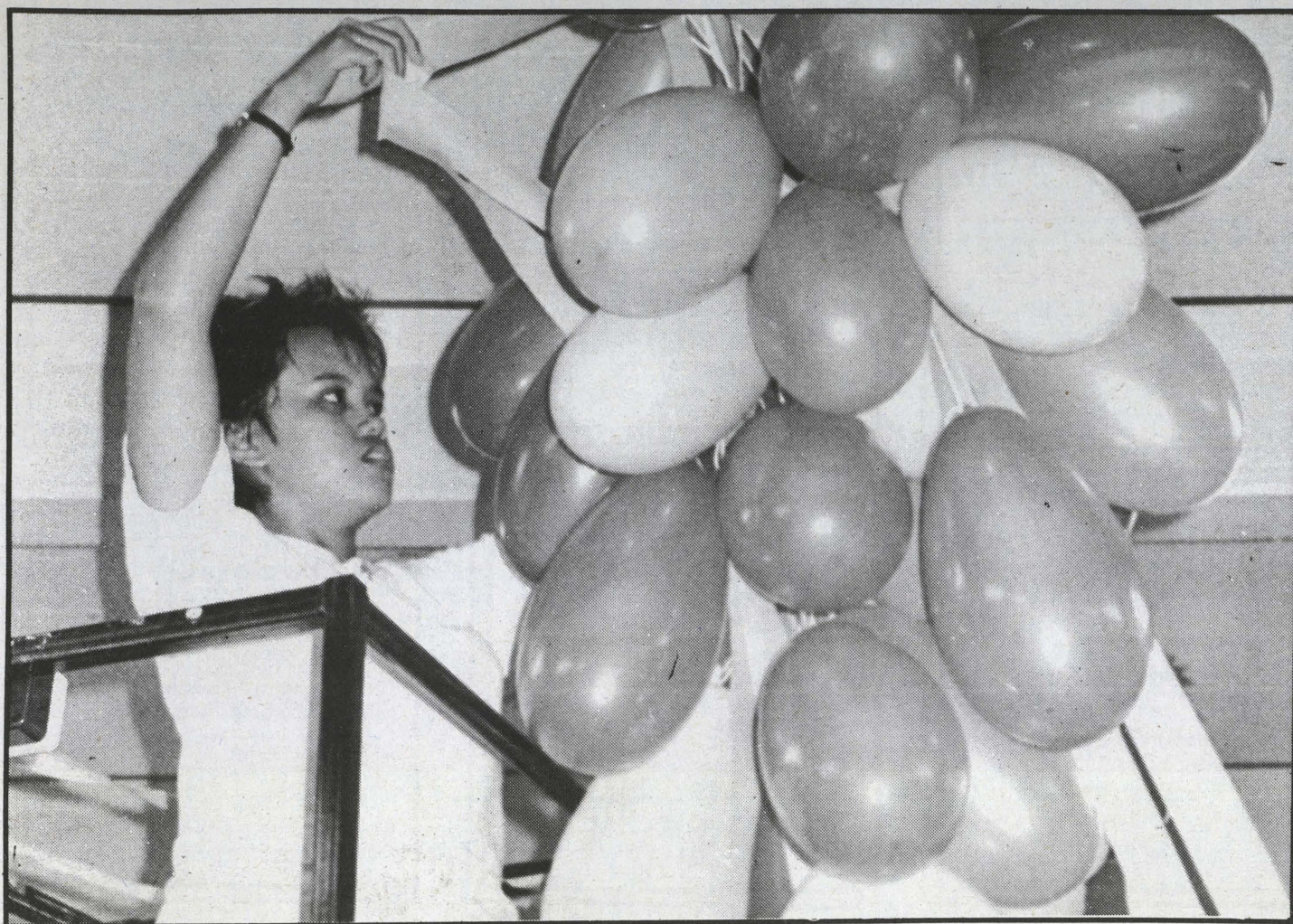
Earn Extra Income While You Are In School.

Flexible Hours. Your Choice Of Shifts & Hours. Gain Nursing Experience In Homes & Hospitals While You Are Still In School.

APPLY AT:



ATTENTION-PLUS PRIVATE NURSING
1110 UNIVERSITY AVE. SUITE 202
(IN THE VARSITY BUILDING)



The Student Lanai at the Pensacola campus was festively decorated with streamers and colorful balloons for the annual KCC Back to School Dance. Food service students Ken Akazawa and Jim Kishida were responsible for the cooking, with the help of other students. Bose provided a mobile disco, featuring Re-Run and Pitzno as DJ's. Party decorations were by Akazawa and Kishida.

Photo by Lance Kamisugi
Copy by Megan Harrington



Entertainment Line



Little Shop of Horrors

"Little Shop of Horrors" will be opening at the HPAC theatre on September 9th. The show is guest-directed and choreographed by award-winning Victor Valentine, and features Daniel H. Kelin, Sarah Stanley, and Jim Seibel, as well as Audrey II.

Performances will run Wednesdays through Sundays, until October 11th. Very few tickets remain unsold. For further information, call HPAC at 988-6131.

Greg Allman Band

Tickets for the Greg Allman Band "Rock to the Islands" are \$15. The concert will take place in Andrews Amphitheatre on Saturday, September 12.

The Sound of Music

"The Sound of Music", will be the next production put on at Honolulu Community College Theatre, located directly across the KCC DH Campus.

Whispers/Commodores

The Whispers and the Commodores will be "rocking steady" on October 2nd at the Blaisdell Center. Ticket dates have not been released. The concert is sponsored by Oceanic Cablevision's VH-1.

Bon Jovi Concert

Bon Jovi is coming to Hawaii. Concert dates are October 15 and 16. Both concerts are presently sold-out.

Animation Festival

"Animation Celebration," a 90-minute compilation of the best films entered at the International Tournee of Animation, is presented in Academy Theatre premiere showings at 7:30 Wednesday through Saturday and 4 on Sunday, September 9-13. Tickets are \$3.

Concert

Academy Camerata with principals Kathryn Lucktenberg and Steve Pologe presents the premier concert in their 1987-88 season at the Academy Theatre accompanied by pianist Elmar Oliveira at 8 on Monday, September 14. Featured works on the program include Brahms' "G Major Quintet, Opus 111," a Mozart duo, and a Beethoven trio for clarinet, cello and piano. Concert tickets are \$9 (\$8 Academy members), \$7 students and senior citizens. A catered supper at 6:15 in the Garden Cafe is available by advance reservations only (\$12.50); phone 538-3693, ext 231.

Poetry Reading

Fred Baysa, the Waialua writer who won the "Discovery" award from Nation magazine, presents a reading of his poetry in the Academy Theatre at 7:30 on Tuesday, September 8. The presentation is co-sponsored with the Hawaii Literary Arts Council with partial funding support from the State Foundation on Culture and the Arts. Tickets are \$3 general admission. (\$2 Academy and HLAC members)

KAPIO PROUDLY PRESENTS:

RE-INTRODUCTION: THE HERO: CAPT. KCC!!!
CAPT. KCC is secretly a mild-mannered Social Science Professor named "KIMO." HE STANDS ALWAYS ready to DEFEND KCC STUDENTS/fac. FROM THE FORCES OF EVIL, AND STATE BUDGET CUTS.
ORIGIN: UNKNOWN AT THIS TIME!

THE RETURN OF CAPT. KCC!

HIS ARCHENEMY: LORD UKU and his NOT SO-bright COCKROACH TROOPS. He holds a personal vendetta against CAPT. KCC and the current KCC system.
ORIGIN: LORD UKU was once a KCC chemistry professor, until an genetic experiment accidentally transformed him into: **LORD UKU!**

STORY/ART: "FLO"

TWO SEMESTERS AGO:
As we last saw him, CAPT. KCC THWARTED the KCC takeover plan by LORD UKU, and RESCUED the Provost JOHN MORTON & PAT SNYDER. LORD UKU was defeated, and there was peace in KCC for two whole semesters....
NEXT: LORD UKU RETURNS!

8 tuesday

Fred Baysa, Poetry Reading at
Academy Theater 7:30 p.m.

9 wednesday

Food Service Dining Room open for dinner

"Lethal Weapon" Hemenway Theatre 4 p.m.
"Animation Celebration"
Academy Theater 4 p.m.

10 thursday

"Lethal Weapon" Hemenway Theatre 4 p.m.
"Animation Celebration"
Academy Theater 4 p.m.

11 friday

"Lethal Weapon" Hemenway Theatre 4 p.m.
"Animation Celebration"
Academy Theater 4 p.m.
UH Wahine volleyball vs. UCLA 7 p.m.

12 saturday

UH Wahine volleyball vs. UCLA 7 p.m.
Greg Allman Band concert Andrews Amphitheatre
"Lethal Weapon" Hemenway Theatre 4 p.m.
"Animation Celebration"
Academy Theater 4 p.m.
Deadline for entries for Academy Art Exhibit 12N

13 sunday

"Animation Celebration"
Academy Theater 4 p.m.
"The Killers" Hemenway Theatre 7 & 9 p.m.

14 monday

"The Killers" Hemenway Theatre 7 & 9 p.m.
Academy Camerata Academy Theater 8 p.m.

15 tuesday

Food Service Dining Room open for lunch
"Great Expectations" Hemenway Theatre
7 & 9 p.m.

Students play money game

By Sementa Bach

The students of Introduction to Business are playing the stock market with \$50,000 each. One student made \$91,000, others made between \$8,000 and \$10,000. This was all hypothetically of course.

"The object" said Instructor of Sales and Marketing, Irmagard Davis, "is to take the students further into the subject and to get them to read the newspapers daily."

The "game" illustrates the advantages and pitfalls of the stock market.

The knowledge gained through this playful experience is lifelong, Davis hopes.

Other areas covered in the Intro to Business course are forms of ownership, necessary documents to start a business in Hawaii, marketing, management, and financial aspects.

This course is recommended to students interested in business, whether or not the student plans to make it a career.

Honors Coordinator

Diane Komenaka has been appointed coordinator for the KCC Honors Program. In addition, she will also serve as advisor to Phi Theta Kappa, the national honorary fraternity for community and junior colleges.

All full time faculty and lecturers may submit course proposals for the Fall 1988 Honors Seminar.

Guidelines for the course and further information can be obtained from Komenaka at 734-9370.

Computer Center

By Clemen Montero

KCC's computer center is located in Iliahi Building below the Math and Reading labs.

Students who wish to use the facilities must abide by the lab's rules and regulations.

A sign-in sheet is located at the front desk and students are required to sign-in before using the computers. First-time users must attend an orientation class.

An identification card is required to use the facilities and check out software. Students must pick up their ID card when returning the software. In case of problems, students must notify the operations monitor on duty and follow the monitor's instructions. Do not try to repair or remove any equipment.

The monitors and tutors are not expected to assist in logical programming errors.

The following are the general guidelines for the computer lab:

- * No food or beverages is allowed.
- * No smoking.
- * No games (unless requested by instructors for educational purposes).
- * ILLEGAL DUPLICATION OF SOFTWARE IS NOT PERMITTED.
- * Non-computing activities is not allowed.
- * Footwear is required.
- * No pets (visual assisting dogs for the handicapped is permitted).
- * No disconnecting or moving of equipment.
- * Environmental controls should not be manipulated.
- * Loud and excessive noise is not permitted.

information line

Honolulu Academy of Arts

Lavi Daniel

An exhibition presenting "figurative works dealing with subliminal emotional possibilities" by one of Los Angeles' emerging talents, Lavi Daniel, Corcoran Gallery.

The exhibition is supported in part by a grant from the Lannan Foundation and funds administered by the Hawaii State Foundation on Culture and the Arts. FOCUS gallery Aug 4-Sept 13.

George Woollard and Jinja Kim

Aug 13 - Sept 20 graphic arts gallery. Dream figurations by Honolulu artists George Woollard and Jinja Kim present approaches to nostalgia for childhood and dream-state perspective. Both artists are graduates of the University of Hawaii M.F.A. degree program and have exhibited frequently in juried and invitational shows including ones in France and Japan.

Nude Figures by Jean Charlot

The exhibition is supported in part by funds administered by the Hawaii State Foundation on Culture and the Arts.

Sept 17 - Oct 25 Second floor galleries. French-born artist Jean Charlot (1898-1979), well-known for his paintings of scenes of Mexican and Hawaiian life and public murals, maintained a lifelong interest in the human figure, which is explored in this exhibition, the first ever to

document his paintings and drawings of the nude figure.

Artists' Entry Deadline

Artists' slide entries to the juried section of the annual Artists of Hawaii exhibition at the Honolulu Academy of Arts must be received by noon on Saturday, September 12. (The exhibition will be on view November 27-January 10 in the second floor galleries.) For a copy of the exhibition prospectus and registration forms, phone Cathy Ng (Mon 8-3 and Tue-Fri 8-4) at 538-3693.

The exhibition presenting works by resident artists is supported in part by a grant from A T & T and funds administered by the State Foundation on Culture and the Arts.

Revelations II

Sept 17 - Oct 25 second floor galleries. Presenting seldom shown works from the museum's permanent collection, including new acquisitions and recently restored pieces. Revelations II marks the museum's 60th anniversary year. Highlighted are Japanese prints, textiles, decorative arts, photography, graphic arts and paintings of Hawaii - all areas of the collection targeted for more regular display in new gallery spaces to be opened following the move of education programs to the Academy Art Center at Linekona in late 1988.

The exhibition is supported in part by funds administered by the Hawaii State Foundation on Culture and the Arts.