

EWA HURRI-CANE



VOLUME XX

Ewa, Hawaii, February 14, 1969

NUMBER 7

The Boss is Back!

Escaping the wintry snowstorms of the Northeast, Manager Ed Bryan, accompanied by Mrs. E. Bryan, returned to Ewa late Wednesday evening, February 12. After experiencing one of the Northeast's worst snowstorms in years, the Boss says he is happy to be back here enjoying the balmy weather once again, but more the feel of Aloha in Ewa's air.

Harvest to Start Next Week

With factory repairs just about completed, harvesting is expected to begin on Tuesday, February 18 as announced by Assistant Manager Cushnie last week.

The '69 harvest is expected to cover 4,617 acres with an estimated yield of 57,000 tons.

Toshio Murakami E.F.C.U. President

The Ewa Federal Credit Union's board of directors has announced its choices for officers for 1969. In a series of meetings both last week and this week, occasioned by some difficulties in finding a secretary-treasurer, the board chose Toshio Murakami for president, Toki Kawakami for vice president, and Tony Bise as acting secretary-treasurer.

Toshio, who was elected a director of the credit union last year, is the Assistant Field Agriculturist at Ewa. Toki, credit union president last year, is a Plumber Journeyman at Ewa. Tony, also an active credit union director, is a Machinist Journeyman.



Murakami

Ewa School's Lincoln Day, 1969

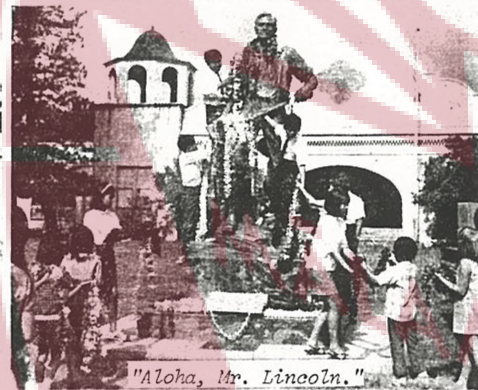


Twin M.C.'s, Kenrick and Theodore Ogata.

"This is Your Life, Abe Lincoln."



Principal Igawa presents trophy to Deborah Yamane.



"Aloha, Mr. Lincoln."



Ewa School's "Abe", George Florentin.



The program was well attended.

To the tune of "To You a Lei", sung by a member of the Royal Hawaiian Band, Ewa School students draped colorful leis over the school's bronze statue of Abraham Lincoln, an impressive and moving climax to Ewa School's 26th annual Lincoln Day program held Wednesday, February 12th.

The softness of the leis, in contrast to the strong, bronze features of the statue, epitomized the man, Abraham Lincoln -- gentle, yet strong. And to the end that others might appreciate and honor Lincoln's gentleness and strength, Ewa School has annually celebrated Lincoln's birthday since acquiring the statue in 1944.

This year, students from the fifth and sixth grades presented a pageant entitled, "This is Your Life, Abe Lincoln." Patterned after the TV program of the same name, the pageant presented students representing persons important in the life of Lincoln. Other grades and the E.R.A. pre-school recited various readings and poems.

Deborah Yamane, daughter of the Rev. and Mrs. Susumu Yamane of Ewa, read her prize-winning essay, "The Great Abe Lincoln and Our Nation Today." Ewa School's principal, Stanley E. Igawa, presented a trophy to Deborah. Her essay was judged winner of the Principal's Trophy from those submitted by each fourth, fifth and sixth grader.

Other essay winners were: Fourth grade - Ist-Randal Yanagisawa, 2nd-Roxanne Quitoriano, 3rd-Donna Isobe; Fifth grade - Ist-Deborah Yamane, 2nd-Randal Nagatani, 3rd-Jodie Kawamoto; Sixth grade - Ist-Shirley Ramos, 2nd-Mabel Cadelinia, 3rd-Jan Yasui.

The Royal Hawaiian Band provided music for the program.

HSPA Trainees Visit Ewa



HSPA Trainees who visited Ewa. Included among them are Ewa's Sadao Higashi (front, second from left), Irrigation Foreman and Stanley Tamashiro (front, second from right), Plant Field Overseer.

Twenty HSPA trainees and four instructors spent a full day at Ewa on Wednesday as part of the HSPA training course for supervisors. Led by instructor Bruce Nishimoto, the trainees studied the basic genetics of sugar cane and learned to grade and test varieties in the field.

After a welcome from Assistant Manager Robert Cushnie, the trainees were shown the film seen annually by thousands of tourists who visit Ewa -- even the commercials were included.

Then, hosted by Ewa's Jerry Wakatsuki and Toshio Murakami, the trainees were taken out to the fields for actual experience in grading cane varieties.

The trainees also observed, and were impressed by, Ewa's cap-rock water system, the growing of cane on marginal land, and the development of the Campbell Industrial Park area. Several also expressed surprise at the good condition of Ewa's cane hauling roads.

Plantation Duty Roster

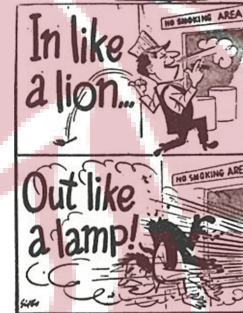
- * Feb. 10 - Feb. 16, 1969
- * T. Tazawa 683-215
- * Feb. 17 - Feb. 23, 1969
- * H. Tamura 683-405
- * JO REPORT FIRES 681-047

Transfers and Promotions

- * ANGLER LAGMAY, Ag. Control Worker Lnr. "A" to Ag. Control Worker.
- * MIGUEL DUMLAO, Field Hand to I.C.E. Mechanic Trainee.
- * DARWYN LARIOSA, Cleaning Plant Aid to Factory Mechanic Trainee.

THE EWA HURRI-CANE
Published weekly by the Industrial Relations Office at Ewa Sugar Company, Inc., Ewa, Hawaii. Phone 683-591

The Safe Way Is the Ewa Way



Certain things you do each day can be done a safe way--or a dangerous way. If you'll practice the safe way of doing things, you'll soon do them automatically. They'll become habits. One of the nice things about good habits is that you don't have to spend time thinking about what you're doing--you just do it. Like blowing out a match after you've used it. That's a safety habit--one you've probably had most of your life.

E.R.A. Membership Meeting Reminder

The first general membership meeting of the E.R.A. since the Association went independent will be held at 7:00 P.M. on Wednesday, February 19. The principal items of business will be the election of officers for 1969 and the ratification of the proposed constitution and by-laws.

Since this meeting will establish the foundation for the newly-independent E.R.A., all Ewa-ites are strongly urged to attend.

Refreshments will be served.

Fishing Contest Dinner Set

The annual E.R.A. Fishing Contest awards dinner will be held tomorrow, February 15, at 5:30 P.M. at Jimmy Ornellas' home, 91-1769 Pepper Row. Menu for the evening will be steak, at the nominal cost of two dollars per person.

In addition to the presentation of awards to '68 contest winners, registration will be taken for the '69 contest.

Everyone is invited. Persons wishing to attend are asked to contact Jimmy Ornellas, Perry Calotis of "Forty" Hasebe.

The winner in the "largest oio" class of the 1968 Fishing Contest was erroneously reported to the Hurri-Cane as "Kala" Sato. The correct winner is John Sawamoto with a 7 lb. 14 oz. oio.

Welcome to Ewa



Shown above are Mr. and Mrs. Baldomero Barbieto, who were married in the Philippines on December 7, 1967, while Baldomero was on a short visit there. Mrs. Barbieto just recently arrived from the Philippines to join her husband in Ewa.

Baldomero, a tractor operator in the preparation division, is the son of Mr. Eduardo Barbieto and the late Mrs. Barbieto of Dolores, Abra, Philippines. Mrs. Barbieto, the former Lourdes Cabantog, is the daughter of the late Mr. and Mrs. Jaime Cabantog of Pura, Tarlac, Philippines.

ILWU Softball

It was Ewa's day at Keehi Park last Sunday as Unit 4104 softballers ran roughshod over the Ford Center nine by a 7 to 0 score.

Porky Behic and Billy Angway (former Ewa great) shared the pitching honors holding the opponent batters helpless throughout the game.

Leading the local's attack were Porky Behic with a homer; Angel Manuel with 3 hits and Dickie Itamoto with two safeties.

The Ewa lads now leading the league, face a crucial test this Sunday when they take on the powerful Matson outfit at 10:30 A.M.

The rallying cry is "Win or Bust!" They must take this one to stay on top.

Bake Sale

The Ewa Jr. YRA will hold a bake sale from 9:00 A.M. to 12:00 noon tomorrow, February 15, at the Ewa Shopping Basket.

Ewa Blanks Wahiawa

Ewa beat Wahiawa, 4 to 0 last Sunday to continue its hold on the second spot in league standing.

Clayton Kiriu and Norman Hoshino combined their pitching talents to scatter eight Wahiawa hits rendered useless by a tight Ewa defense.

Of Ewa's nine hits, Roy Nishioka accounted for two -- a double and a single.

Ewa hosts Waiialua this Sunday for their second round game, and takes on the league-leading Waiialua nine on Friday, February 21 to play off the first series game which was postponed because of weather.

Other league games are:

- Sunday, February 16
- Wahiawa at Aiea
- Pearl City at Waipahu
- Friday, February 21
- Aiea at Waiialua
- Pearl City at Wahiawa

All games begin at 1:30 P.M.

Because of space limitations last week, the revised Rural Oahu Baseball League schedule could not be printed in its entirety. However, as space is available this week, the entire schedule follows. All games begin at 1:30 P.M.

Feb. 16 - Waiialua at Ewa; Wahiawa at Aiea; Pearl City at Waipahu.

Feb. 21 (Friday) - Make up of the season's opening round: Ewa at Waipahu; Aiea at Waiialua; Pearl City at Wahiawa.

Feb. 23 - Waiialua at Pearl City; Aiea at Ewa; Wahiawa at Waipahu.

March 2 - Waipahu at Aiea; Wahiawa at Waiialua; Pearl City at Ewa.

March 9 - Waiialua at Aiea; Wahiawa at Pearl City; Waipahu at Ewa.

March 16 - Make up of postponed Feb. 2 round: Waiialua at Wahiawa; Ewa at Pearl City; Aiea at Waipahu.



A winner!

Ewa

Recreation Association

Low membership dues...Join now at the Ewa gym. Payroll deduction or cash.

Classified Ad

WANTED: Two (2) Waitresses, one (1) Cook's Helper (part-time, morning shift), and one (1) Dishwasher (part-time, Friday, Saturday, and Sunday, evening shift). Experience not necessary. Apply at Tenney Center Tavern.

E.R.A. SPORTS

EWA LITTLE LEAGUE BASEBALL REGISTRATION

Saturday and Sunday will be the last chances for boys to sign up for the Ewa Little League. Registration will be held today through Sunday at the Ewa Shopping Basket between the hours of 10:00 A.M. and 4:00 P.M. Boys must be accompanied by a parent or guardian. Registrations fees, which must be paid at the time of registration, are:

- T-Ball (6 to 8 years) \$3.00
- Little League (9 to 12) \$5.00
- Pony League (13 to 14) \$5.00
- Colt League (15 to 16) \$7.00

Volunteers are needed to be umpires and coaches. Anyone interested may contact Al Respicio at 683-741.

ERA LEeward MIXED VOLLEYBALL LEAGUE

Results of games played at Ewa gym:
Thursday, Feb. 6
Makakilo Royals over Honokai Hale, 11-15, 15-1 and 15-4; Ewa Beach over Ewa CYO, 15-6 and 15-10; Ewa over Makakilo Spoilers "A", 15-8 and 15-3.
Tuesday, Feb. 11

Ewa Beach over Makakilo Spoilers "A", 15-12, 12-15 and 15-12; ERA over Honokai Hale, 15-10, 13-15 and 15-11; Makakilo Spoilers "B", 15-21 and 15-9.

Next games are scheduled for this coming Tuesday and Thursday nights, February 18 and 20, beginning at 6:00 P.M., with three games per night.

LEeward MEN'S BASKETBALL

Results of games played at Ewa gym:
Monday, Feb. 10

Palisades 68 over Sahkey's 28, Greenbacks 66 over Makakilo Marauders; Waipahu Puhio 60 over Makakilo Spoilers "A".

Wednesday, Feb. 12
Makakilo Royals 50 over Ewa Beach Apts. 29; Stragglers 51 over Makakilo Spoilers "B" 34; Honokai Hale 45 over Makakilo Colts 22.

Next games are scheduled Friday and Monday nights. Games start at 6:00 P.M., with three games to be played per night.

E.R.A. YOUTH BASKETBALL LEAGUE

Results of games at Ewa gym last Saturday, February 8:

7 to 9 Years
Honokai Hale 10 over ERA 3
Ewa Beach 10 over Makakilo 8

10 to 12 Years
ERA 22 over Makakilo "A" 18
Ewa Beach 26 over Honokai Hale 13 to 15 Years
ERA 41 over Ewa Beach 25

Next games are scheduled for this Saturday, February 15, at Ewa gym.

OIA BASKETBALL SCHEDULE

February 14, 6:30 P.M. - Campbell at Waianae.
February 15, 6:30 P.M. - Kahuku vs. Campbell at Ewa gym.