

VOLUME XV

# EWA HURRI-CANE

Ewa, Hawaii, May 22, 1964

NUMBER

— THE EWA HURRI-CANE —  
Published weekly by the Industrial Relations  
Office at Ewa Plantation Company,  
Ewa, Hawaii. Phone 683-541



## Your Safety



### PRACTICE IT!!

The same kind of accidents can happen to you off the job as well as on the job, so don't forget safety when you leave your place of work.

When you drive—drive defensively, expect the other driver to make a mistake—be ready for any emergency.

At home you can be injured by falling down stairs, off of ladders or on slippery floors. You can also be injured while using hand tools around the house on a "do-it-yourself-project." In fact, statistics show that more people are hurt at home than on the job.

The same safety rules that have proved helpful on the job can be used for your safety and the safety of your family in your own home.

BE SAFETY CONSCIOUS AWAY FROM WORK.

## Buttons Bows Install Officers

Celebrating their first anniversary with a banquet on Saturday, May 16, the Buttons and Bows lassies also installed their officers for the year 1964-65. The ceremony took place at Willy's Restaurant in Aiea.

Mr. Charles Tanaka, the guest speaker, had the honor of installing the officers in the presence of their parents and the guests. They are: Karen Yoshinaka, President; Vera Mae Hishinuma, Vice President; Claudia Ishihara, Secretary and Caran Iwata, treasurer.

## Saving Hints

The Ewa Federal Credit Union has purchased an issue of magazine entitled "Everybody's Money" for its members. It contains many short and interesting articles on our everyday living.

This issue will serve as a guide to wise buying in the growing confusion of products such as food, drugs, used cars, etc.

The magazine may be had by contacting Mrs. Sueko Tsuburui at the Ewa Federal Credit Union Office.

Limited supply -- first come, first serve.



Mr. and Mrs. Donald Gushi of Varona Village became the parents of a daughter on May 21 at the Ewa hospital. They named the child Sheryl Michiko Gushi.

Mr. and Mrs. Alvaro Valdez of Lower Village welcomed the arrival of a daughter on May 21 at the Ewa hospital. They named her Jessie Valderama.

## Our Best Wishes...

For a speedy recovery to the following Ewaites who are recuperating at Ewa Hospital: Fortunato Tolentino, Mrs. Fulgencia Cadiente, Mrs. Sen Tomita, Kelly Naya, Loretta Miranda and Torazo Sugai.

## On Furlough

Michael Matsura, A/2, son of Mr. and Mrs. Tadashi Matsura, is home with his parents on a 30-day furlough. He enlisted in the U.S. Air Force in October, 1962 and is stationed on Okinawa at the Kadena Air Force Base.

Mike is a '61 graduate of Waipahu High School. He was active in the Boy Scout movement and served as its Junior Assistant Scoutmaster of Troop 17 in 1960-1962.

## Body Show

The E.R.A. is sponsoring its third annual Leeward Oahu Physique Show on Friday, May 29 at 7:30 p.m. The "body" show will be held at the Ewa gym.

Those interested in capturing any of the following titles: Mr. and Miss Leeward Oahu and Mr. and Miss Leeward High School, please contact Stanley Yamashiro or Alfred Respicio at the gym.

## Introducing...



Major League  
To the right -- Front row: O. Murakami, D. Galivo, W. Salgado, C. Jimenez, W. Sanches.

## BAD NEWS

Federal government approval for the construction of a new beet sugar factory near Phoenix, Arizona, deals another hard competitive blow at the Hawaiian Sugar industry, according to a local sugar spokesman.

About 50,000 tons of sugar are expected to be processed by the new factory.

Arizona is one of the western states which constitute the prime market for the Hawaiian sugar industry, the spokesman pointed out. The western states already have an excess of about 1,600,000 tons of sugar -- an amount which is above the needs of the area and has to be shipped elsewhere to be sold, he said.

The approval came recently in the form of an allocation of 20,000 acres by the Secretary of Agriculture from the national sugar beet acreage reserve to farms in Arizona which will supply beets to the factory to be built in the Phoenix locality by the Spreckels Sugar Company.

The new plant will be ready to process the 1966 crop.

Approval for the new allocations was paired with approval for 33,000 acres, expected to produce 50,000 tons of sugar, in Maine, which is outside Hawaiian sugar's main market.

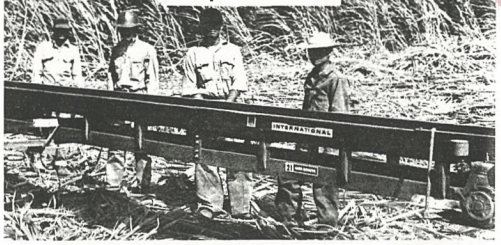
Prior commitments out of the national beet sugar acreage reserve which affect Hawaiian sugar's chief markets include: 19,000 acres, estimated to produce about 45,700 tons of sugar, near Mendota, California, which started with the 1963 crop, and 8,140 acres, expected to yield another 18,020 tons in Idaho.

## Memorial Day Service

The annual Memorial Day Service sponsored by the Ewa Veterans Club will be held at 7:00 P.M. on Saturday, May 30th at the Ewa Community Church.

The public is cordially invited.

## Experiments



Participating in an experimental seed handling method are from left to right: Felimon Sumalpong, Clifford Shibusabe, Lorenzo Simbre and Leon Castillo, Jr.

A new experimental seed cutting handling method was tested at the plantation last week. A 40 foot International Harvester conveyor was mounted on a fingerlift for the field trial. The seed slashers under the direction of Masa Oshiro cut and topped the stalks and placed them on the conveyor.

## Sugar Output

Sugar production in Hawaii at this time is more than 120,000 tons ahead of the output at the same time last year, the Hawaiian Sugar Planters' Association reported recently.

High production at this time is not necessarily a sure sign of a good production year, sugarmen point out, since anything can happen to the weather from here on. However, it is an encouraging sign because the high production summer months are just ahead.

## Aloha... Welcome to Ewa



Maurice Eisenman, President of Whittier Pop Warner Football, and his wife, Pauline, arrived in Hawaii on May 12 from California. Their visit here has three purposes--spend time with the Higashis, vacation and business. He is president of seven Pop Warner teams and 25 teams in the Midget Division of King Conference in Southern California.

His business portion of this trip is to arrange a home-and-home series with Hawaii's midget teams.

Maurice and his co-workers gave the Ewa Pop Warner Squad, consisting of 44 youngsters and 14 adults, the royal welcome in December, 1963. Ewa, coached by Sadao Higashi, played the Reseda Rams in Van Nuys, California.

The Eisenmans, who vacationed here in 1959, would like to live and do as the natives do. When asked to give their opinion of Hawaii, Mrs. Eisenman replied, "I just love it out here."

Our best wishes to you, Mr. Eisenman. We hope that the balance of your stay will be an enjoyable one.

year old children only. Parents who wish to have their children receive this service, should sign consent forms which are available at the Industrial Relations Office and also at Ewa School. This treatment is FOR FREE.

It has been demonstrated that this solution applied to the teeth in a series of four applications reduces the amount of new dental decay by about 40 per cent. However, it is not a substitute for regular professional care from your dentist.

If you have any questions about this program, please phone 507711, extension 729 or 730.

## Ewa School Honors Carino and Ajifu

The Ewa School P.T.A. held their last meeting of the year on May 11 at the school auditorium. Julio Carino and Shoyei Ajifu were presented with certificates of Honorary Membership in the Hawaii Congress Parents-Teachers Association for their outstanding participation in the P.T.A.

Mr. Ross Bachman, Mrs. Rose Armstrong, Mrs. Violet Chee and Mrs. Emma Ching were presented certificates from the Department of Education for having served in the Department for over 25 years. This is the first time that such recognition has been given to teachers of Ewa School.



Mr. Mattison, West Oahu P.T.A. installed the 1964-65 officers. Left to right, they are: Front Row, Mrs. Elaine

District President of the officers. Left to right, they are: Front Row, Mrs. Elaine Suyama (Hospitality), Mrs. Daisy Oka (P.T.A. Magazine), Miss Lillian Hira (Publicity), Shoyei Ajifu (Vice President), Mrs. Thelma Oniva (President), Mrs. Lona Makile (Secretary), Stephen Glipa (Treasurer), Masachi Hasebe (Parliamentarian). Second row -- Ross Bachman (Principal), Kiyoshi Yasui (Attendance), Shungo Jo (Finance), Julio Carino (Past President), Gilbert Shimakage (Health & Safety), Rev. Susumu Yamane (Parent & Family Life Education), Andy Mii (Legislative). Missing from picture -- Takeshi Ishihara (Membership).

## Sodium Fluoride Program at Ewa

The Division of Dental Health, Department of Health, will run a Summer Topical Sodium Fluoride Program at Ewa Elementary School during the months of July and August.

This service is for 3 and 4

## Ewa's Oldtimer

The plantation's "old timer" in this issue is ISIDRO CALIMPONG, who has accumulated a service record of 31 years and 3 months.

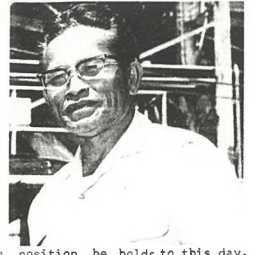
"Daddy", as he is known to all, worked for Pioneer Mill Company after his arrival from the Philippines in December, 1929. Before coming to Ewa, Isidro was with Hawaiian Pine Company and Cahu Sugar Company.

Starting as a Field Hand, he became an Irrigator in January, 1945. Two years later he was transferred to the Transportation Department as spraying truck driver and in 1949 was promoted to heavy truck driver, a position he holds to this day.

"Daddy" is quite a talented musician and many have sung and danced to his "strumming of the old guitar". The Filipino String Band of which he was a member in 1941, was heard on the air throughout the Islands. He has also mastered the art of spear fishing--for fish as well as lobsters.

Isidro has four daughters and two sons--Patricia, Gwendolyn, Priscilla, Joan, Edward and Patrick.

Mrs. Rosita Calimpong is in Misamis, Occidental Negros, P.I. and expects to join him in the near future.



## Ewa Bowl Echoes

EWA FIFTEEN MIXED LEAGUE

League standing as of May 18:

Team	Won	Lost
Manila	15	8
Davao	10	11
Legaspi	10	11
Corregidor	8	13
Bataan	7	14
Cavite	7	14

Individual High Series

D. Daclison (Davao) w/hdcp.	694
E. Maruquin (Davao) w/hdcp.	618

Individual High Single

S. Villanueva (Legaspi) w/hdcp.	269
A. Manoloyo (Legaspi) w/hdcp.	222

EWA COMMUNITY MIXED LEAGUE

League standing as of May 14:

Team	Won	Lost
Valiant	25	14
Nova	23	16
Falcon	22	17
Lark	19	20
Rambler	18	21
Tempest	10	29

Individual High Series

B. Samante w/hdcp.	720
M. Yasui w/hdcp.	617

Individual High Single

F. Nagatani w/hdcp.	225
E. Maruquin w/hdcp.	253

WATPAHU COMMUNITY CHURCH LEAGUE

League standing as of May 19:

Team	Won	Lost
Ukus	12 1/2	9 1/2
Termites	12	11
Lice	10	11
Roaches	10	11
Beetles	9 1/2	11 1/2
Stink Bugs	9	12

Individual High Single

J. Barcelona w/hdcp.	245
F. Santa Ana w/hdcp.	188

## Lil' League Results

May 16

Tag Ball		
Dodgers	25	Cubs 9
Pioneers	26	Lions

Minor League

Senators	11	Athletics 6
Tigers	13	White Sox 2

Major League

Giants	11	Tigers 6
Cubs	6	Colts 4

May 10

Minor League		
White Sox	5	Athletics 4
Tigers	10	Yankees 0

Major League

Giants	15	Tigers 6
Braves	2	Cubs 1

## Volleyball

WOMEN'S INVITATIONAL VOLLEYBALL LEAGUE

May 18 Results

Ewa C.Y.C. over Fernandez Village	
1st Set	11
2nd Set	15
3rd Set	7

Varona Village over Welanae Poni

1st Set	10
2nd Set	14

Scheduled games for next week:

May 26	
St. Rita "A" vs. Makakilo	
Poni MoI vs. St. Rita "B"	
Ewa vs. Puanani Babes	

May 27

Ewa Beach vs. Orchids of Acres	
Makakilo vs. Cosmopolitans	
Sacred Hearts A.C. vs. Western Steel	

\*\*\*\*\*

## VOLLEYBALL MEETING

The Men's Invitational Volleyball League is now in the process of being organized. A meeting will be held at the Ewa gym on Tuesday, May 26 at 7:00 P.M. Those interested, please see Al Respicio at the gym.