

# EWA HURRI-CANE

VOLUME XII

Ewa, Hawaii, July 21, 1961

NUMBER 15



A brush fire alongside the Ft. Weaver Road near Honouliuli bridge.....

On Wednesday, July 12, fireman from four stations, Ewa Plantation Company, Waipahu, Barber's Point and Ewa Beach, converged on the scene of fire at Honouliuli. Their quick response to an alarm turned in by a person residing near the area confined the fire in two small areas. One area of fire is on the right of the picture. The other area, on the left, out of range of camera, was cased by sparks leaping across the road.

The fire was presumably caused by lighted cigarette carelessly tossed out of a passing car.

## Earn While You Help Your E.R.A. Carnival

All bonafide clubs or organizations in Ewa community will be given an opportunity to earn some money while doing a great service to the E.R.A. Carnival. For those clubs interested - here's the deal. For every 10 carnival scrips sold by your club, you get to keep one.

Starting Monday, July 24, persons representing their clubs may pick up the Carnival scrips from Kojiro Nakamura, co-chairman of the carnival finance committee, at the plantation accounting office.

All completed sales and unsold tickets must be turned in to Kojiro by Friday, August 25th.

## Hongwanji Bon Dance

The annual bon odori of the Ewa Hongwanji will be held on Friday and Saturday, July 28 and 29 at the church grounds.

The popular dances of the past years will be featured

## Teachers Study Isle Sugar; Visit Ewa

Some 225 teachers, mostly Mainlanders, who are attending summer session at the University of Hawaii, spent a full day yesterday studying Hawaii's sugar industry. Their day of study of the sugar business culminated with a visit to Ewa Plantation Company.

The teachers are students of Dr. Douglas S. Yamamura, University of Hawaii sociology professor. They are enrolled in Sociology S-356, Hawaii and Its People.

During the morning hours, the students heard a lecture on Hawaiian sugar by industry representatives. In the afternoon, boarded on five buses, they arrived at Ewa at 1:30. A tour through our factory, a break for refreshments and a trip out to the harvesting field filled their day at Ewa.

Most of the Mainland teachers are from the Western states.

during the two nights.

The grounds will be open at 7:30 p.m. The public is cordially invited.

## Hawaii Sugar Faces Greater Competition

There is a new development in the country's sugar industry that means some more pilikia to Hawaii's cane sugar producers.

A new plant, heralded as the most modern beet sugar factory in the U.S., is scheduled to open at Mendota, near Fresno, California in the summer of 1963.

Owned by Spreckels Sugar Co., the plant is expected to produce between 75,000 tons and 100,000 tons of sugar annually for the already sugar-heavy Western market.

This production will be more than the output of any one of Hawaii's 27 sugar plantation companies except Hawaiian Commercial & Sugar Co. on Maui. When the new factory is added to the already existent Spreckels plants, the company's factories will be turning out about 2,350 tons of sugar each day.

In comparison, daily production of all of Hawaii's 27 mills totals about 5,000 tons.

The 11 Western states, Hawaiian cane sugar's prime market, already suffer from an over-supply of sugar of 1,143,000 excess tons.

Increasing competition from beet sugar is one of Hawaiian cane sugar's biggest headaches.

## Summer Olympics

The Leeward Oahu Junior Chamber of Commerce with the City Parks and Recreation will sponsor the 4th annual Junior Summer Olympics which will be held at the Radford high school track field on Saturday, July 22, from 8:30 a.m. to 3:00 p.m.

The participants in this Olympics are the Summer Fun groups from Ewa, Aiea, Pearl City, Waipahu, Waialua, Wahiawa, Nanakuli and Waianae.

The Summer Olympics is a youth fitness program designed for mass participation of our youths. Youngsters ranging from 6 to 13 years of age will participate in various track and field events. Ewa will be represented at this Olympics by 47 boys and girls.

Attendance to the Summer Olympics is free to all. Parents especially are encouraged to attend this event and participate in rooting for the youngsters from our area.

## Portable Galvanized Flumes Ease Job And Cut Cost

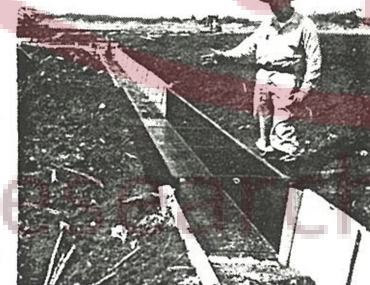
The need for portable galvanized flumes, which were first installed in our fields as early as 1953, continues. Last week one of them was fabricated in our sheetmetal shop and installed in recently harvested Field 19.

These portable sections are used only at points where cane hauler in-field roads cross irrigation split flumes. These sections, measuring 24 feet in length and weighing approximately 165 pounds are fairly easy to handle. They also cut costs by eliminating the time consuming job of resetting and recementing the split flumes as was done prior to the program of installing galvanized flumes at crossing points of the hauling units.



In the above picture, Choshiro Kato, sheetmetal worker leaderman, and Francis Uyeno, sheetmetal worker, put the finishing touches on a galvanized flume in the shop.

In the picture below, Kazuo Izumihara, field construction gang foreman, points out a newly-installed piece of galvanized flume in Field 19.



**THE EWA HURRI-CANE**  
Published fortnightly by the Industrial Relations Office at Ewa Plantation Company, Ewa, Hawaii. Phone 28-3591

Member: Industrial Editors of Hawaii and International Council of Industrial Editors.

Managing Editor..... Chas. Ygloria  
Editor.....Kats Wakatsuki  
Typist.....Realonda Diaz  
Staff Photographer.....Gervacio Blue  
Printers.....PHOTO-OFFSET by Fisher Corporation, Ltd.

## The Point System Under The New Traffic Law

A new traffic law passed by the State Legislature is now in force. The police officials are now enforcing the "Point system" traffic law which penalizes a driver for his bad habits.

The new law works this way:

If a driver has had habits and is caught often enough violating traffic ordinances, he can find himself without a driver's license.

Each time he violates a traffic law and found guilty, he is assessed a certain number of penalty points for that infraction.

When the driver has accumulated 12 points against himself due to traffic violations, he faces suspension of his driver's license.

The law requires magistrates to suspend licenses from one to six months.

Here is a schedule of points which can be assessed against guilty drivers:

**FROM 3 TO 6 POINTS:** Careless driving, driving while license is suspended or revoked, fraudulent use of license, speeding 15 or more miles over speed limit, leaving scene of accident.

**FROM 1 TO 4 POINTS:** Speeding 10 to 14 miles above speed limit, failure to report an accident immediately, negligent driving, permitting unlicensed person to drive.

**FROM 1 TO 3 POINTS:** Following too closely, disregarding stop signs, disregarding control signals.

**FROM 1 TO 2 POINTS:** Stopping at medial opening, improper emergence from driveway, leaving auto with motor running, violation of pedestrian right-of-way.

**FROM 0 TO 4 POINTS:** Driving on left side.

**FROM 0 TO 3 POINTS:** Right-of-way violations, unlawful passing, crossing solid or double lines.

**FROM 0 TO 2 POINTS:** Improper turning, unsafe emergence from parking place, disregarding pavement markings, unsafe movements, driving with unsafe equipment, faulty brakes, driving with improper lights, impeding traffic.

## Social Security Changes

The minimum monthly benefit under the Social Security law to a retired or disabled worker, or to a sole survivor of a worker who was covered by Social Security, has been increased from \$33 to \$40. This increase will be effective with August Social Security checks which are released early in September. Persons receiving minimum or low benefits do not have to do anything, as their payments will be increased automatically.

Here is some news of interest to men between 62 and 65. Under the 1961 amendments to the Social Security law, a man may retire anytime after he reaches 62. However, the choice of a retirement benefit before 65 means a slightly reduced pay-

## Parson's Corner

Dr. Williston Wirt, Pastor  
Ewa Community Church

According to H. W. Hanson, a boy named John was asked to stay for dinner at a friend's home. Everyone started eating, and John asked "Don't you say a blessing before you eat?" "No, we don't take time for that." John thought a minute and said "You are just like my dog. You start right in."



If you have any questions about this provision of the law, visit or call the Social Security office at 1181 Alakea Street.

## Ewa's Oldtimers

A native of Argao, Cebu, P.I., GERARDO PANTOJAN and his wife, Emiliana, and his daughter, Cesaria, arrived in Hawaii on the President Wilson on February 1, 1924.

Gerardo was assigned directly to Kahuku Plantation as an irrigator. After three years of employment at Kahuku Plantation, he decided to move to Ewa Plantation. He was hired here on May 26, 1927 as an irrigator and has held that job since.

The Pantojans have nine grown children of whom two are employed at Ewa. They are Victor, an irrigator and Florencio, a temporary employee.

Gerardo and his wife reside at Fernandez Village.



## Duke Paraz Heads Ewa Orchid Society



Duke Paraz, a timekeeper with our accounting department, is the newly elected president of the Ewa Orchid Society.

Others serving with him during the new year are H. C. Penhallow, vice president; Mrs. H. C. Penhallow, secretary; and Shigeru Yawata, treasurer.

The directors are Charles Domingos, Masaaki Oshiro, Anthony Anastasio and Shohichi Tomoyasu.

Kaoru Murakami of Honouliuli served as last year's president.

Duke who has been a member of this society since its beginning in 1950, became interested in orchid culture in 1940. He gained a lot of experience while working with the late Mr. Takami Kodama, at his nursery, first at Republican St., then later when they moved to Kam IV Rd.

Duke is also a life member of the American Orchid Society.

At its recent regular meeting the group discussed plans for the orchid exhibit at the upcoming E.R.A. Carnival, September 1-2-3. Also being planned is the group's next get-together, a potluck picnic supper on July 29th at the Barber's Point Officers' Beach.

## Community Church News

The next church family potluck dinner will be held on Sunday evening, August 13. This will be a special occasion, and the members are asked to reserve this date.

A church family luncheon will be held on Sunday, July 30, following the church service at the Parish Hall. The Pilgrim Fellowship Young People will serve the luncheon under the supervision of Mrs. Grace Moku-lehua, social chairman of the church. The Young People will be selling tickets after church - adults 75¢ and children 12 and under 50¢.

Profits from the luncheon will go to the Christian Summer Camp Fund, which helps pay the way for the church's delegates to Summer Conference.

The high school Pilgrim Fellowship held a social gathering on Saturday evening, July 15 in the Parish Hall, and installed the following officers to lead them during the coming year: President, Sue Nakasone; vice president, Joann Sato; secretary, Pearl Kikuta; and treasurer, Harriet Kagawa.

The Laymen softball team which is entered in the Rural Oahu Church Laymen's League lost its opening game on Friday, July 14 to Waipahu Church 9 to 2. Ewa's next game will be played this evening at 6 p.m. at the Varona Village Park against the Samoans from the Moanalua Samoan Church.

## Beach Party

An all-day party, 8:00 a.m. to 4:00 p.m., sponsored by the parents of ball players and E.R.A. is being planned for all 10 teams of the E.R.A.'s Beginner's and Little Leagues at Hau Bush on Saturday, July 29.

### Fishing is Excellent At Kauai

Off-shore fishing at Kauai is excellent according to the five Ewa men who visited the Garden Island during the 4th of July weekend. To back up their claim, they took some pictures of their catches to bring back to Ewa.



These five men, Greg Debutiaco, Lefty Galizo, Chut Sojot, Porky Behic and Alejandro Navarez, left Ewa on June 30th for a four-day stay on Kauai. They were guests of Greg's parents who are residing in Mana, Kauai. Fishing from Mr. Anastacio Debutiaco's boat on Saturday, July 1st, netted these five from Ewa, 38 uluas, 4 kawakawas, 7 baracudas and 1 uku.



Here we see the display of the haul weighing over 300 pounds.

Greg and Porky are employees of Ewa. They hold the job of Filter Clarifier Tender.

### Bantam Football Team To be Formed

All boys 13-14 years of age who are interested in playing for the Ewa bantam football team are invited to turn out on Monday, July 31st at 4 p.m. at the Tenney ball field. Also, all boys turning out for the team are asked to have their parents accompany them at that time.

If enough boys are interested, Ewa's team will be entered in the Rural Pop Warner Bantam Football League.

Mr. Chuck Leahy, who is from Leeward Estate and a strong supporter for Ewa boys' football, will head a committee which will be formed from among interested parents at Monday's meeting.

### Through The Town

NEWLYWEDS.....Mr. and Mrs. RICHARD KOTAKE were married on July 15 at the Church of the Crossroads.

The bride, Alice, is the daughter of Mr. and Mrs. TORAJIRO SATO of Tenney Village.

The bridegroom is the son of Mr. and Mrs. ROBERT KOTAKE of Honolulu.

The wedding of Mr. and Mrs. ALFREDO TORRECER took place at the Ewa Community Church on Sunday, July 16, with Dr. Williston Wirt officiating.

The bride is the daughter of Mrs. CARMEN PANLASIGUI of Fernandez Village.

The bridegroom hails from Waipahu.

NEW ARRIVALS.....ALVIN RALPH CADELINIA tipped the scales at 7 pounds 6 ounces at birth. He was born on July 6 at the Ewa hospital. His parents are Mr. and Mrs. MAXIMO CADELINIA of Fernandez Village.

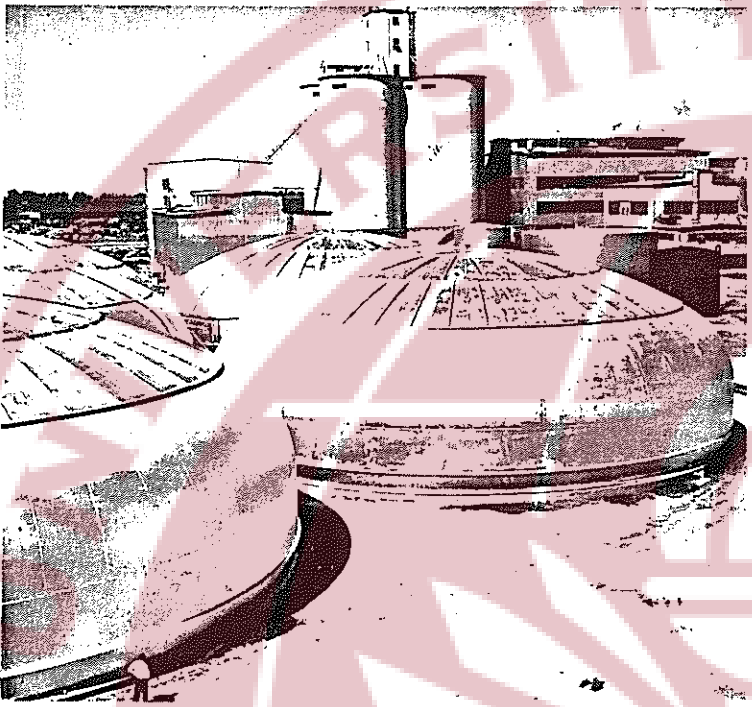
Mr. and Mrs. NOBORU OKOJI of Fernandez Village welcomed the arrival of their third child, a son, on July 10, at the Ewa hospital. They named him LANCE YOSHIO OKOJI. Lance tipped the scales at 6 pounds 5 ounces at birth.



ELISA SACAMOS arrived from the Philippines on the President Wilson on July 16 to join her father, brother and sister.

Elisa was born 18 years ago in Sanchez Mira, Cagayan, P.I.

Mrs. Jack Jose of Tenney Village and Mrs. Charles Ebinger of Fernandez Village, recently left for the Mainland on a two month's vacation. They plan to visit their friends and relatives in California.



These giant tanks store "thick juice" to be processed into sugar in a unique new sugarbeet processing system. The technician in the picture standing near the 40-foot high juice storage tanks at Holly Sugar Corp., Brawley, California, emphasize the huge size of the new 1,850,000-gallon storage facility.

### New Sugar Beet Processing System Revealed

Holly Sugar Corporation of Brawley, California revealed a unique sugarbeet processing system. The new system will increase the manufacture of sugar in the Imperial Valley by 23,000 tons and could alter sugar supply patterns across the nation, according to the California beet people.

Company president Merrill E. Shoup said the unique feature of the new system is the temporary storage of partially refined sugar in five specially designed semi-spheroid steel tanks lined with a plastic coating. This method will enable the factory to process an additional 2,100 tons of sugarbeets per day.

About one-third of the sugarbeets being received at the factory each day are being carried only to the thick juice state for storage.

Heretofore the factory's sugar making season has had to coincide precisely with the sugarbeet harvest - a period of from 90 to 100 days. This year, using the tank storage system, the sugar refining phase will be carried on for an additional 50 or 60 days.

To meet the plant's greater capacity, Holly already has contracted with Valley growers for an increase of about 6,000 acres over the 1960 level.

Indications were that another 1,000 acres would be put under contract next year, with additional increases to follow.

Increased acreages resulting in an increase in sugar production is of great concern to Hawaii's sugar industry, especially so since this increased production will be released in Hawaii's major market areas.

### In Sympathy

The people of Ewa extend their deepest sympathy to the family of the late Geri Eileen Debutiaco, 5 months old, who died on July 9 at the Ewa hospital.

She is survived by her parents, Mr. and Mrs. Gregorio Debutiaco of "C" Village; a sister, Ellen; and a brother, Guy.

### Classified Ads

FOUND. Lady's Elgin wrist watch at Japanese Social Club ground. Owner please claim it at the Industrial Relations Office.

### Ewa Continues to Hold Lead in Babe Ruth League

Ewa's Babe Ruth baseball team, coached by Richard Kato, continues to hold first place in the Northern Division of the Babe Ruth League.

Now in its third round of play, Ewa holds a one game lead over the Barber's Point Cougars and two games lead over third place Schofield Redlanders.

Here's the standings of the top three teams to date: Ewa 10-3; Cougars 9-4; and Redlanders 8-5.

### Little League All Stars Selected

The selection of the all-stars from the eight teams entered in the E.R.A.'s Beginner's and Little Leagues is now completed.

These players have been combined to form two teams in the Beginner's League and two teams in the Little League. They will play in two-out-of-three series in their respective leagues on July 24, 26 and 28. The starting time for the first game is 4 p.m.

For the Beginner's League, Team #1 is comprised of first place Furies and last place Pioneers. They are: Masa Tazawa, Darwin Matsushima, Wayne Horie, Derick Soma, Sergio Villanueva, James Niino, Michael Herbias, Roger Murakami, Gale Lariosa, Ronald Abregana, Roland Abregana, Roger Santa Monica, Zoilo Quimoyog, Jr., Randy Biscaino and Milton Kono.

The players of Team #2, comprised of second place Fleeters and third place Dodgers are: Gordon Narusawa, Damon Tsurumaki, Melvin Sanehira, Wayne Nakamura, Neal Takahashi, Dean Sueda, Layton Wakatsuki, Delwyn Jo, Robert Vincent, Gordon Inouye, Clifford Mendes, and Leonard Bucuo.

For the Little League, Team #1 is made up of first place Flyers and last place White Caps. They are: Lloyd Biscaino, Richard Quitoriano, Spencer Glipa, Gordon Yamasaki, Kenneth Miyashiro, Adriano Namocot, Frank Garcia, Jr., Patrick Mesiona, Alan Nakamura, Stanford Ornellas, Robert Abregana, Clayton Kiriu, Roy Ishihara, Melvin Ige and Marvin Maruquin.

Team #2 players, selected from second place Bar Cats and third place Raiders, are: Dennis Lucena, Ronald Flores, Richard Palipti, Randall Sojot, Darwin Lariosa, Diosdado Lucena, Kenneth Calocis, Don Ahia, John Murata, Irving Ishihara, Guillermo Anguay, Dennis Imada, Edwin Shroads, Randall Goto and Abraham Quintal.

### E.R.A. MEN'S INVITATIONAL VOLLEYBALL LEAGUE

Team	Won	Lost
Mikilua Poultry	8	3
Haleiwa A.C.	6	4
Kaala Kanes	6	4
Del Monte	6	4
Nanakuli Rabanes	5	5
Ewa Sanford Wong	3	7
Waianae Jokers	1	9

### Japanese Club Show

"FAR BEYOND THE SURF" is the title of the Japanese Club show which will be shown this Saturday night at the club grounds. The movie is in color with English subtitles. It stars Shima Iwashita and Masahiko Tsugawa. Show time is 7:30 p.m.

### Parents Hear Lecture On Wills and Insurance

Those people who attended the free lecture on wills and insurance conducted at the Ewa gym last Monday night are glad they took advantage of this free opportunity. They are much wiser today in planning their financial affairs for the future.

This lecture, given as a public service, was sponsored by the cooperative Extension Service of the University of Hawaii.



The guest speakers, who covered the subjects of insurance, wills and social security, were Helen C. Gascon, home economist of University of Hawaii and Harry T. Tamura of Waipahu.

### Throwing Out Party

Practically every medicine cabinet is a bit like grandmother's attic - full of things that were useful once but aren't anymore. In addition to being useless, left-over drugs can also be dangerous.

Liquids may evaporate with time. Then they may become too highly concentrated to be safe. For instance, you can get a nasty burn from concentrated iodine.

Toss out any left-over drugs prescribed for a previous illness. Never give left-over drugs to somebody else who seems to have the same symptoms you had. And don't take them yourself. You may seem to have the same illness for which a drug was originally prescribed. But you may actually have something entirely different, needing another medicine altogether. Remember that taking the wrong medicine can be dangerous as well as useless.

Throw out any gauze or other bandaging material which has become soiled.

Your medicine cabinet should contain only the drug you are taking for a current illness, aside from such household remedies as aspirin and bicarbonate of soda.

Anyone ill enough to need a prescription drug is ill enough to need a doctor's advice before taking anything. Oahu Tuberculosis & Health Assn.

### Foreign Postal Rates And Fees Increased

A revised schedule of rates for international mail and postal money order fees took effect on July 1. Postages for certain classes of domestic mail also changed.

Surface mail rates for foreign countries other than Mexico and Canada increased from 8¢ to 11¢ for the first ounce. Each additional ounce cost 7¢ instead of the old rate of 5¢. Rates for air letters to outside countries also went up from 10¢ to 11¢.

First class domestic mail postage rates did not change.

Surface parcel post fees to the Philippines and Japan were 45¢ and 48¢, respectively, for the first pound, and 12¢ and 25¢ for each subsequent pound. The common rates for both countries increased to 90¢ for the first two pounds and 35¢ for each additional pound.

Fees for domestic money orders are: \$0.01 to \$10; 20¢; \$10.01 to \$50, 30¢; and \$50.01 to \$100, 35¢. International money order fees are twice as much as those for domestic money orders.

### Here's the Dope

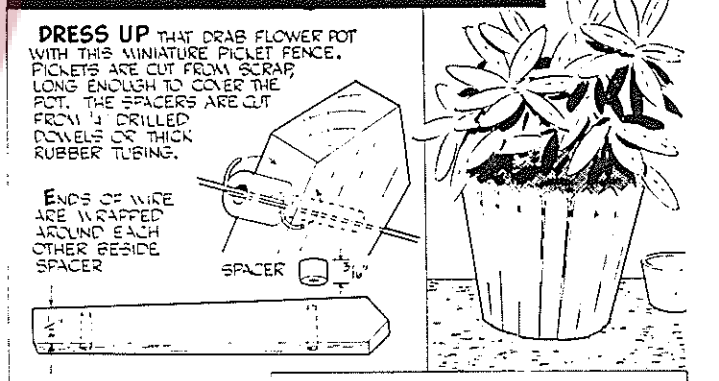


### A Call for Pop Warner Football Players

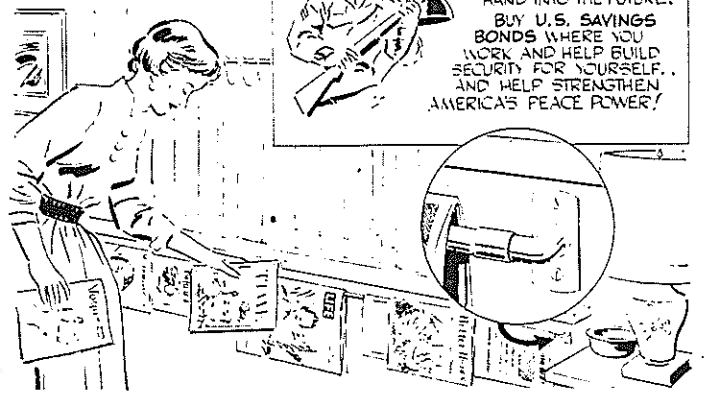
All those who are 12 years and under and are interested in trying out for the Ewa Pop Warner football team are asked to report to the gym at 4 p.m. on Tuesday, August 1st.

If for some reason you cannot be present at this first meeting, please give Mr. Charles Aina a call at the gym office, 283-741.

### How to Do It



A MAGAZINE RACK CAN BE QUICKLY MADE BY MOUNTING A BRASS CURTAIN ROD TO THE WALL OR WINDOW APRON.



THE PAYROLL SAVINGS PLAN WAS DESIGNED TO GIVE YOU A HELPING HAND INTO THE FUTURE. BUY U.S. SAVINGS BONDS WHERE YOU WORK AND HELP BUILD SECURITY FOR YOURSELF AND HELP STRENGTHEN AMERICA'S PEACE POWER!