

EWA HURRI-CANE

VOLUME XIX

Ewa, Hawaii, April 12, 1968

NUMBER 15

The Boss Says "Mahalo"

Manager Ed Bryan returned last week from a month's trip half way across the world. He had this to say:

"I have enjoyed a month away attending the International Sugar Technologists Conference at Taipei and visiting various points of interest in the Orient. The best part of the trip was returning to Ewa to find things in good order and progress being made in spite of any difficulties. I expected it would be so, but I ask that each of you accept my deep appreciation for your good work!"

Randy Nagatani Speech Finalist

Randy Keiji Nagatani, 4th grader of Ewa Japanese Language School, was one of the five winners of the Speech Contest held last Saturday at the Nippon Theatre.

This contest was sponsored by the Oahu Kyoiku Kai as one of the events to commemorate the 100th year since the arrival of the first Japanese immigrants to Hawaii in 1868.

Twenty-three students representing 19 Rural Oahu Japanese Language Schools spoke before a large audience.

Randy will be one of the finalists in the State-wide speech contest to be held on August 4, 1968.

Production News

Week Ending	To	Date
4/5/68	5,837	
Tons Sugar Shipped	1,568	
Acres Harvested	147	
Tons Net Cane	15,624	
Tons Cane Per		
Ton Sugar	10.48	
Tons Cane Per Acre	102.45	
Tons Sug. Per Acre	10.29	
Per Mo.	0.427	

Plantation Duty Roster

* April 6 - April 14, 1968
* T. Iizawa 683-215
* April 15 - April 21, 1968
* G. Aina 683-106
* TO REPORT FIRES 681-047

Sugar Compliance Payments Questioned

The following article appeared in a recent issue of the *Castle & Cooke Report*. It is reprinted here to give the readers of the *Hurri-Cane* the true facts about sugar compliance payments.

"The sugar industry's compliance payments are coming under attack again in Washington D.C. Rep. Paul Findley, Illinois Republican, refers to the payments as 'federal subsidies and said he wants to change the method of payments made to the industry in Hawaii - a change that would reduce total payments to Island plantations by about \$2 million a year.

"At present, compliance payments are made to each of Hawaii's 25 sugar plantations. Findley wants to combine 23 of the plantations into five groups on the basis of the 'Big Five' companies that control them, then make the payments to each of the owners.

"This would sharply reduce the total size of the payments. In the case of Castle & Cooke, for example, it would reduce the total payments received by C&C's three plantations by about \$240,000 a year - from about \$1.44 million to \$1.2 million. For C. Brewer & Co. Ltd., which has eight plantations, the payments would drop by about \$250,000 a year.

"Findley's argument is that, while the plantations may be separate operations, their ownership is no longer separate. However, the U.S. Department of Agriculture now is following the law which mandates that payments be made to the farms themselves. Findley contends it's an absolute must at this time for the treasury to tighten up to save every possible penny of federal revenue."

"Labeling the compliance payments as 'subsidies' was the sugar industry's tactic. Industry spokesmen explain, the payments do not come from the taxpayers but rather from a special excise tax paid by sugar refiners, amounting to a half cent per pound of refined production."

"The tax was set up specifically to pay for the administration of the Sugar Act, which includes the compliance payments for sugar refiners who comply with production and marketing quotas and other Agriculture Department regulations."

Easter Message

By Father Francis Phillip of Immaculate Conception Church. Easter Sunday, 1968, dawns on a world torn by war and violence, a world marked by suspicion, and fear and hate. Easter brings to this world, not just a recollection of a grand event in the past. It brings a message for the present. That message is spelled HOPE.

As Christ passed through suffering and death, as He overcame hatred, and suspicion, and emerged victorious, and glorious, and radiant with new life, so we, His followers, can see our world, with all the pain and misery it holds for so many, and still hope. That pain and misery will disappear. That wars will end. That hatred will cease. That somehow, somebody, the peace and joy of Easter Sunday will envelop the world.

May this spirit of hope shine brightly on the world this Easter of 1968.

Combined Easter Services

The Ewa-Ewa Beach Ministerial Association once again will conduct a Sunrise Service on Easter Sunday morning. Clergymen of several churches in the area will participate. The Reverend Charles Smith will deliver the sermon. Music will be provided by the Leeward Choral Society.

Site for the service will be at the corner of Edgewater Drive and Iroquois Avenue in Capehart Housing. Services will begin at 6:15 AM.

People of all faiths are welcome.

IMMACULATE CONCEPTION CHURCH-EWA

April 11 - GOOD FRIDAY

8:00 PM - Liturgical Service

6:30 PM - Stations of the Cross

APRIL 12 - HOLY SATURDAY

11:00 PM - Easter Vigil Service

APRIL 14 - EASTER SUNDAY

7:00 AM - 8:00 AM - 9:30 AM - Masses



Educational TV

KHEP Channel 11 telecasts many interesting programs. The program at 5:30 P.M. today on "WHAT'S NEW" will be "Roaming the Smithsonian". The exhibit of "Man" will tell the story of man's development from the known beginnings to his present stage. Wednesday, next week at 7:30 P.M., "BUYER BEWARE" covers warnings of home improvement gyms.

For complete program information, consult the program in the daily newspapers.

Pensioners to Meet

The Ewa Pensioners Club will meet on Thursday, April 18, at the ILLU Unit hall. Starting time - 6:30 P.M.

Pensioners to Meet

"Spokesmen add that the system is not only self-sustaining but that it has produced a revenue surplus steadily for the U.S. Treasury."

Easter Message

By Father Francis Phillip of Immaculate Conception Church. Easter Sunday, 1968, dawns on a world torn by war and violence, a world marked by suspicion, and fear and hate. Easter brings to this world, not just a recollection of a grand event in the past. It brings a message for the present. That message is spelled HOPE.

As Christ passed through suffering and death, as He overcame hatred, and suspicion, and emerged victorious, and glorious, and radiant with new life, so we, His followers, can see our world, with all the pain and misery it holds for so many, and still hope. That pain and misery will disappear. That wars will end. That hatred will cease. That somehow, somebody, the peace and joy of Easter Sunday will envelop the world.

May this spirit of hope shine brightly on the world this Easter of 1968.

Combined Easter Services

The Ewa-Ewa Beach Ministerial Association once again will conduct a Sunrise Service on Easter Sunday morning. Clergymen of several churches in the area will participate. The Reverend Charles Smith will deliver the sermon. Music will be provided by the Leeward Choral Society.

Site for the service will be at the corner of Edgewater Drive and Iroquois Avenue in Capehart Housing. Services will begin at 6:15 AM.

People of all faiths are welcome.

IMMACULATE CONCEPTION CHURCH-EWA

April 11 - GOOD FRIDAY

8:00 PM - Liturgical Service

6:30 PM - Stations of the Cross

APRIL 12 - HOLY SATURDAY

11:00 PM - Easter Vigil Service

APRIL 14 - EASTER SUNDAY

7:00 AM - 8:00 AM - 9:30 AM - Masses

Promotions

HERMENGILDO CADANG, Truck Dr.-Uti-Hvy.Li."A" to Truck Dr.-Uti-Hvy.

SILVON RAPAICON, Truck Dr.-Uti-Hvy.Li."A" to Truck Dr.-Uti-Hvy.

The Sun and Cancer

This is the time of year to be careful about the sun.

Too much sun can cause skin cancer. Unlike most others, this type of cancer is visible to the naked eye, and is therefore easily detected. The American Cancer Society advises prompt action . . . an appointment with your doctor . . . if a sore doesn't heal within two weeks.

Bookmobile in Ewa

DATE: April 15, 1968
PLACE: EWA POST OFFICE
TIME: 2:00 - 2:45 P.M.
EWA BEACH SHOPPING CENTER
TIME: 5:15 - 7:45 P.M.

PAGE 2

EWA HURRI-CANE

April 12, 1968



Traffic Code Highlights "Part 5"

ARTICLE VI. TRAFFIC CONTROL DEVICES

Sec. 15-6.12. TRAFFIC LAINE MARKINGS.

When a broken line is used for a center or lane line, such a line is a guide line and may not be crossed by vehicular traffic, unless such movement can be made with safety.

When a single solid or a double solid line is used for a center or lane line, the line is of a regulatory character and is not to be crossed by vehicular traffic except when turning into or out of private driveways or intersecting highways or when directed by a police officer or any other persons authorized to direct, control, or regulate traffic or when such streets are traffic coned to allow additional traffic lanes at times of emergency or peak traffic hours.

Whenever a combination of solid and broken lines is used, any solid line appearing in the same lane in which the vehicle is travelling shall not be crossed at any time, except when turning into or out of private driveway or roads, or intersecting streets or highways, and any broken line appearing in the same lane in which the vehicle is travelling may be crossed at any time.

When traffic cones are used by proper authority to temporarily control the flow of traffic in lanes other than designated by the permanent pavement markings, the lines designated by the cones shall have the same regulatory effect as the permanent markings.

Easter Egg Hunt

The annual E.R.A. Easter Egg hunt is set for April 13 at 10:30 A.M. at Tenney Center. Descendants of E.R.A. members and E.P.Co. employees ranging in age from 4 to 18 years are invited.

Egg decorating contest (for adults) will be an added feature of the program.

Interested? Then, contact Alfredo Respicio or Mrs. Thelma Omiya.

4-H Fair

The Ewa - Ewa Beach 4-H Ladies are planning a fair to be held at Ewa Beach Elementary School multi-purpose building on May 4. The fair will be a combination of project exhibits and style revue.

Mrs. Mabel Okashige of Ewa Beach has been named the General Chairman. Mrs. Jane Ota of Ewa Beach and Miss Marlon Horie of Ewa will be in charge of the project exhibits. Mesdames Cecil Cox and Rudy Alporque will head the style revue.

Student Loans from Your Credit Union

Vocational schools have been approved for federal student loans. The students enrolled in the following schools in Hawaii may apply for interest free loans for \$1,000.00 per year while attending schools: Cannon's School of Business, Church College of Hawaii, College of Commerce, Queen's Hospital School of X-Ray Technology and School of Nursing, St. Francis Hospital School of X-Ray Technology, University of Hawaii, and Hawaii Loa College.

Japanese Movie

SPONSOR: Ewa Japanese Club
DATE: Saturday, Apr. 13, 1968
TIME: 7:15 P.M.
PLACE: Japanese Club Grounds
TITLE: "MEMORI KYOSHIRO"
CAST: Ichikawa Raizo
Takata Miwa

Little League

Scheduled games for the week and the locations are listed below:

Major League	April 12, 5:00 PM - Ewa Field
Mets vs. ERA Braves	April 13, 10:00 AM - Ewa Beach Park
Pirates vs. Dodgers	April 15, 5:00 PM - Ewa Beach Park
Cubs vs. Pirates	April 16, 5:00 PM - Ewa Field
Cardinals vs. Braves	April 17, 5:00 PM - Ewa Beach Park
Giants vs. Dodgers	April 18, 5:00 PM - Ewa Beach Park
Mets vs. Cubs	April 19, 5:00 PM - Ewa Beach Park
Pirates vs. Cardinals	April 13, 10:00 AM - Ewa Field
National League	April 13, 10:00 AM - Ewa Field
Twins vs. Angels	12:00 PM - Ewa Beach Park
Expos vs. Orioles	2:00 PM - Ewa Beach Park
Giants vs. Dodgers	April 16, 5:00 PM - Ewa Beach Park
Twins vs. Angels	April 17, 5:00 PM - Ewa Beach Park
Giants vs. Browns	April 18, 5:00 PM - Ewa Beach Park
Angels vs. Orioles	

About 350 Spectators Saw Little League Opener

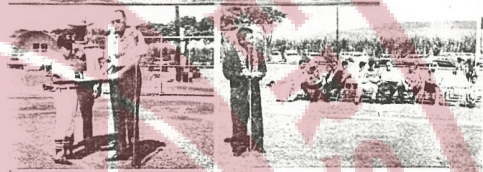
The 1968 Ewa Hurricane Little League got underway last Sunday at Ewa Tenney field. An opening day crowd of about 350 fans saw Ewa's E.R.A. Braves lose a hard-played game to Ewa Beach Cubs, 8-6.

Campbell High School Band, led by Mr. Alfredo Lagasse, played "The Stars-Spangled Banner" while the color guards from Scout Troop 44 of Makakilo presented the national colors.

Dignitaries who participated in the opening ceremony were: Manager Ed Bryan; Councilman Ken Keito; William Paty, Jr., representing Mayor Brindell; Father Louis Vim, Immaculate Conception Church; Doug Mossman, Radio Station KCM Announcer was Master of Ceremonies. League officials are: Louis Souza, President; Francis Akiona, Secretary-Treasurer; John LaPoint, District 2 Commissioner; and Joe DeBello, League Chief Umpire. Vice-Presidents and Agents from their respective areas are: Alfredo Respicio, E.R.A.; Robert Lorison, Ewa Beach; and Isidro Gabriel, Makakilo.



Troop 44 Color Guard and part of the opening day crowd



Manager Ed Bryan presents perpetual trophy to League Ben Keito said, "Play hard, play clean!"



Season's first homer by Emmett Kaanaha of the ERA Braves

The following teams are entered in the various divisions of the league: Major League - Mets (E.B.), Cardinals (E.B.), Cubs (E.B.), Giants (E.B.), Pirates (M), Dodgers (E.B.) and Braves (E.R.A.). Minor: American League - Yankees (M), Red Sox (E.B.), Senators (E.B.), White Sox (E.B.) and Red Sox (E.B.). Minors: National League - Angels (E.R.A.), Giants (M), Orioles (E.B.), Browns (E.B.), Twins (E.B.) and Athletics (E.B.).

Boys, ages 15 and 16 years, interested in playing Colt baseball should turn out on April 15 at 4:00 P.M. at Tenney field. Shungo Jo will be Ewa's coach this year.

Little League
April 12, 5:00 PM - Ewa Field
Senators vs. Tigers
April 13, 10:00 AM - Ewa Field
White Sox vs. Red Sox
April 15, 5:00 PM - Ewa Field
Yankees vs. White Sox
April 17, 5:00 PM - Ewa Field
Red Sox vs. Tigers
April 18, 5:00 PM - Ewa Field
Senators vs. White Sox
April 19, 5:00 PM - Ewa Field
Yankees vs. White Sox
April 13, 9:00 AM - Varona V.I.
ERA Yankees vs. Eagles

I.L.W.U. Softball
"Porky" Behic allowed 1 hit and struck out 6 to give the Ewa Softballers a 5 to 0 victory over Aloha Motors last Sunday at Keeki Park.
Pat Borge homered and Gary Chock garnered 3 hits.
Next game will be against Young Bros. This Sunday at Keeki Park at 9:30 AM.