



# EWA HURRI-CANE

VOLUME IX

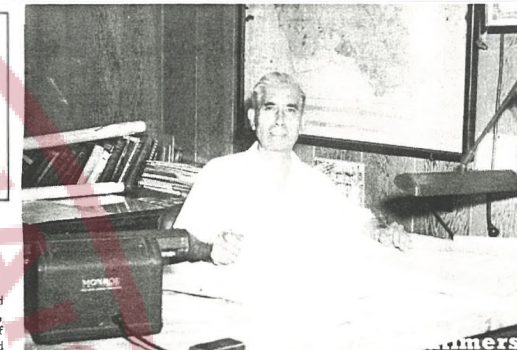
Ewa, Hawaii, September 19, 1958

NUMBER 19

THE EWA HURRI-CANE

Published fortnightly by the Industrial Relations Office at Ewa Plantation Company, Ewa, Hawaii. Phone 28-3521

Managing Editor.....Chas. Ygloria  
Editor.....Kats Wakatsuki  
Typist.....Reolonda Diaz  
Staff Photographer.....Gervacio Blue  
Printers.....PHOTO-OFFSET by Fisher Corporation, Ltd.



Mr. KEIJI SUZUKI, structural engineer has been with the Ewa Plantation Company for 35 years and 10 months.

Some of the old timers will recall that during the years, 1920 to 1925, Ewa's directors authorized a large permanent improvement budget for a new village construction, electrification of the irrigation pumps, water develop-

ment, supply ditch and flume reconstruction, etc. To spearhead these projects, a new civil engineering department was created. Mr. Suzuki was called to join this department as assistant civil engineer on November 22, 1922. He held this position for 16 years.

He is very happy to note that during these 16 years, marvelous changes had taken place in Ewa. The old dilapidated barracks, which were scattered on various locations on the plantation, were replaced by well organized modern villages, composed of family type dwellings, a recreation center, modern hospital, and up-to-date office and store buildings.

In 1938, Mr. Suzuki was transferred to the factory department as structural engineer. His primary duty was to assist the superintendent in planning the shop and factory modernization and maintenance projects.

He was graduated from the University of Hawaii in 1922 with a B.S. degree in Civil Engineering. He was with the U.S. Geological Survey as an engineer, until he came to Ewa.

He is a registered Civil and Structural Engineer and a land Surveyor, authorized to do land court surveying for the Territory of Hawaii.

Mr. and Mrs. Suzuki, who live at #5 Pepper Row, are the parents of three children, June, George, and Ruth. They also have 5 grandchildren, all of whom are presently residing on the Mainland.

The human brain is a wonderful thing. It starts working the moment you are born, and never stops until you stand up to speak in public.

Don't itch for something you're not willing to scratch for.

## NEW RULES ON BEACH KEYS

Due to the fact that some employees are monopolizing the beach keys by alternately signing out certain keys, a new set of rules governing the privilege of borrowing keys has been set up in consideration of other employees who wish to borrow those keys.

The rules are set forth below:

1. The bearers of beach keys will be permitted to hold the keys for one week, Thursday to Wednesday, provided they borrow the keys on Thursday. However, should anyone borrow a key anytime other than Thursday, he must return the key by the following Thursday although it does not extend to one full week. This will provide other employees who could not borrow keys for the week the opportunity to obtain the keys for the following week by signing their names on a waiting list.
2. The waiting list will not exceed the number of keys available for issue.
3. Those who place their names on the waiting list must come in by 4 p.m. Thursday for the keys. Should they fail to do so, the others will be issued to those who come in during the remainder of the week.
4. Only one key will be issued to a person.
5. No person while in possession of a key may sign up for another key.
6. Delinquents in returning keys other than for valid reason, will be suspended from borrowing keys for a period determined by the Industrial Relations Director.

## Introducing....



Jean Lawrence joined the Ewa hospital nursing staff on August 30th.

Mrs. Lawrence, a native of Milwaukee, Wisconsin, came to Hawaii in October, 1957 with her husband, Lt. David Lawrence, who is presently stationed at the Naval Air Station, Barber's Point. Lt. Lawrence, who is a navy doctor, graduated from the University of Wisconsin School of Medicine.

Mrs. Lawrence received her nursing degree from the University of Wisconsin School of Nursing in January, 1957. Following her graduation, she worked with the Marsfield Clinic in Wisconsin from February, 1957 to July, 1957. She also worked at the Southshore Hospital at Aiea from April to September of this year before joining the Ewa hospital nursing staff.

## Ewa Young Farmers Elect New Officers

The members of the Ewa Young Farmers Club held an election of officers for the coming year at Willys on Friday night, September 12.

The newly elected officers are: President, Robert Oshiro;

1st vice president, Shinshichi Yamaki; 2nd vice president, Herbert Fukunoto; secretary, Yukio Ikeda; and treasurer, Duke Paraz. The auditors are Jerry Wakatsuki and Tsutomu Tarasawa. The advisor of the club is Fred Kawamura.

## Charles Ygloria Seeks House Seat From The 10th District

Charles Ygloria, personnel assistant in the industrial relations department at Ewa, is one of the republicans seeking office in the current political campaign.

He is running for a seat in the House from the 10th district in his first attempt at public office.

Ygloria, born in Ewa on July 10, 1917, has been with the Ewa Plantation Company since October 1937.

Ygloria is the son of the first Filipino Protestant minister in the Territory. He is a graduate of Kauai high school and attended the University of Hawaii.

He is a veteran of World War II, having served in the Pacific Areas. He is the secretary of the Ewa Veterans Club; treasurer of the Ewa Recreation Association; committeeman, Boy Scouts of America; member of the Board of Directors, Industrial Editors of Hawaii; Oahu chairman of Hawaiian Plantation Industrial Editors Association; and a member of the Hawaiian Sugar Technologists.

He is a leader and an active participant in community affairs, especially with youth organizations.



## Joint HSPA-Crown Zellerbach Bagasse Test Program Points to Possible New Industry

The Hawaiian sugar industry's research program, pointed toward economic manufacture of competitive quality paper from bagasse, will take a major forward step this fall with construction of facilities to make large-scale tests in Camas, Washington, and further test installations at Hilo and on Oahu at a total overall cost of about \$600,000.

Announcement of the program was made recently by A. B. Layton, president of Crown Zellerbach Corporation, and Boyd MacNaughton, president of the HSPA.

With the new facilities, reliable technical and economic data will be obtained to establish the feasibility of constructing a bagasse paper plant in the Islands and so start a new major industry.

Crown Zellerbach and the HSPA have been conducting joint research since 1952. The HSPA alone has spent about \$700,000 so far on the Program.

### COST TO BE SHARED 50-50

The new facilities will be built and operated by Crown, the cost being shared with the HSPA on a 50/50 basis. Those at Camas will turn out various types of pulp to follow up on the implications of laboratory work started in 1952. This pulp will then be run on paper machines operating in Crown mills in the Pacific Northwest to permit commercial evaluation of the end products.

Also planned as part of the new project are an enlarged deepening plant at Oahu Sugar on Oahu, and bagasse storage test facilities both in Hilo and at Oahu Sugar.

Construction materials for the plant and other facilities have been ordered. Operation is expected to be under way before the end of the year.

In 1954, representatives of the paper company and the HSPA concluded, on the basis of research up to that time, that it was technically feasible to make paper of competitive quality from bagasse. Since then they have been exploring the economic feasibility of such an undertaking and have been working out processing details.

### RESEARCH DONE AT CAMAS

Most of the research work has been done at Crown's Central Research Department at Camas headed by Dr. Wendell W. Moyer. HSPA's personnel directing the project has included George W. Aljijan, coordinator, HSPA, By-Products Project, on loan from California & Hawaiian Sugar Refining Corporation; Harold C. Eichelberger, American Factors vice president and treasurer, and Frederick Simpich, Jr., Castle & Cooke vice president and secretary.

## Our Progress

	9/13/58 This Year	9/14/57 Last Year
Acres Planted to Date	2,075.53	3,748.37
Acres Rationed to Date	39.34	744.37
Balance to be Planted	6.96	8.85
Acres Harvested to Date	2,180.91	*4,424.00
Balance to be Harvested	2,040.64	
Tons Sugar for the Week--96° DA	1,458.42	*1,367.32
Tons Sugar Shipped to Date--96° DA	16,023.86	*61,391.79
Tons Sugar Per Acre to Date (Last Completed Field)	7.44	*14.05
Tons Cane Per Ton Sugar	11.95	*7.75

\*Final - 1956 and 1957 Crops

## INDUSTRIAL RELATIONS DEPARTMENT

## New Citizen



Antonio Pagdilao recently became a naturalized citizen. Antonio, who is a native of Bacod, Ilocos Norte, P.I., came to Ewa 31 years ago.

In March 1956, he took a leave of absence to visit his

## Safety Score

DAYS SINCE LAST LOST TIME

ACCIDENT AS OF SEPT. 15, 1958

DAYS

GROUP I - FACTORY 19

GROUP II - FIELD 103

GROUP III - AGRICULTURE 290

homeland. While there, he married the former Visitation Dagdagan. Mrs. Pagdilao will join her husband as soon as her papers are approved by the Immigration Department.

Mr. Pagdilao is an irrigation flume layer at Ewa.

For research only and not for reprint, distribution, or display.

**Through the Town**

**NEW ARRIVALS....** Mr. and Mrs. JOHN BALIGUAT of Mill Village welcomed the arrival of their son on Monday, September 8 at the Ewa hospital. JASSEN weighed 6 pounds at birth. Mr. Baliguat is with the preparation division.

A son was born to Mr. and Mrs. DIEGO CADIENTE of Middle Village on Monday, September 8. They named the lad ELYMAR and he tipped the scales at 7 pounds 2 ounces at birth. Mr. Cadiente is with the construction department.

**NEWLYWEDS....** Best wishes to Mr. and Mrs. TAKASHI HIGA who were married on Saturday, September 6 at Waipahu. The bride is the former Jean Shimooka of Waipahu. Takashi is the son of Mr. and Mrs. MATSUSHIGE HIGA of "C" Village.



**MR. E. YAMASAKI TAKES TRIP...** Mr. and Mrs. Ernest Yamasaki will depart Monday, September 22, by Japan Air Lines for a two month tour of Japan. While there, they will visit relatives and friends in Kumamoto, Japan. They will also tour Hongkong for a week. Mr. Yamasaki is Chief Clerk in the Agricultural Control Division at Ewa.



Drive right so more people will be left.

**Parson's Corner**

By Father Thomas Miyashiro  
Ewa Immaculate Conception Church

They tell the story of an old drunkard who would never be cured of taking too much. He was weak-willed. Every time he stopped at a certain saloon he took too many, and was soon under the influence. A friend once asked him why he always went to that particular saloon, why he did not stay away from the place, why he always sought out that crowd. Here is the drunk's answer: "All the people who are willing to talk to me are there. I have to go where my friends are, don't I?"

I, as a priest, am not recommending the saloon as a model, but from what little I know about it, there is a sort of sociability, a friendliness, and a spirit of comradeship in the saloon for which every human being longs. That same sociability should be fostered and developed in all the places where men and women meet. There should be much more sociability in our own church and community life. We rush in at the last minute and sometimes late, without even looking at the one next to us. At the end of service of Mass we rush out, as if the place were on fire, and as if everybody had some sickness we did not want to catch.

I believe that we ought to be more like Our Lord, more sociable, more friendly, more willing to meet one another, more willing to talk to the stranger, the newcomer, the outsider. I believe we ought to introduce ourselves, our friends and our acquaintances. It takes but a few minutes. Rich or poor, learned or unlearned, we all have a craving for fellowship. The human heart hungers for a brotherly greeting. If the men in the saloon can be friendly to one another, surely we of this community can be sociable to one another.

Our Lord Jesus did that. He was sociable. He met and greeted people of every walk of life--innocent children, sin-sodden street women, the sick, the poor, the unlearned. He stopped to talk to the woman at the well. In the middle of the night, He received Nicodemus, who was afraid to approach Christ during the day. Christ was approachable. He attended the wedding feast and other social affairs. He mixed with the crowd.

Let us fellowmen of the community of Ewa district follow the great example of Our Divine Master and imitate the virtues of Jesus asking Him grace to make us friendly, sociable, eager to meet and greet one another---FOR THE GREATER GLORY OF GOD.

**Favorite Recipes**

**WEST POINT DATE BARS**  
By Mrs. Winifred Bowman

1 1/2 cups flour  
2 cups Rolled Oats  
1 tsp. soda  
1 1/2 cups brown sugar  
3/4 cup (1 1/2 blocks) melted butter  
Mix dry ingredients and add melted butter.  
**Filling**  
2 cups pitted dates  
1 cup sugar  
1 cup water  
1 tsp. flour  
Boil until mixture is well blended (about 15 minutes). Spread a layer of one-half of the first mixture in a 9" x 9" square pan. Spread the filling over this. Crumble the other half over the top. Bake at 400° F. for about 15 minutes or until nicely browned.



Featured in this issue of our "Favorite Recipes" column, is gracious Mrs. Winifred Bowman, wife of Mr. LeRoy Bowman, transportation superintendent of this Company.

Mrs. Bowman, one of the faculty members of Waipahu High School, teaches Junior English. She is the advisor of the news-writing class, "The Cane Tassel". Her hobby is painting with water color.

Mrs. Bowman, always ready to serve her friends and students, has selected her top specialty--the West Point Date Bars for her favorite recipe. M-m-m-m, delicious, try it.

Worry takes up just as much time as work, and work pays better dividends.



"Are you buying or selling?"



Here we see the women of Ewa community taking the Civil Defense Personnel's Oath from Mr. Shunichi Kikuta, Notary Public of Ewa. These women completed a 4-day block warden training course.

Front row, left to right, Mesdames, Zoilo Quimoyog, Fabian Palipti, Harry Ching, and Stephen Glipa. Back row, Mesdames Clifford Marshall, Frank Wiley, Mrs. Jeanette Apana and Mrs. Harold Teves. Missing from picture are Mesdames LeRoy Bowman, Ross Bachman, Sam Inouye and Eugenio Acoldio.

**With The Golfers**

Masa Uyehara, with a card of 79-11-68, captured the Ewa Golf Club's September Ace trophy. The tournament was held at the Lalehua golf course on Sunday, September 7.

Mato Maruyama and Tokuo Yoshida, both with identical scores of 79-10-69, took second place in the tournament. The third place honors went to Tom Yoshimoto, 84-14-70, and Steve Suda, 90-20-70. Tied for fourth place were Isaac Sato, 82-11-71, and Richard Kato, 96-24-72.

Also, in conjunction with the above tournament, the club started the first round of the 72-hole special tournament.

Remember that every hard-boiled egg is yellow inside.

**HAP HAZARD**



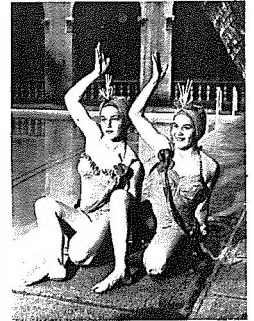
**Free Water Ballet Show at Ewa Pool on September 27**

There will be a synchronized swimming demonstration on September 27 at 7 p.m. at the Ewa gymnasium swimming pool. This demonstration is being put on to show the public how interesting synchronized swimming is and to try to interest Waipahu High School students in starting a swimming group so that they may do the same thing.

Participants of the demonstration will be members of the YMCA Synchronized Swimming class, Ehu Kai Synchronized Swim club and a group of aqua lungers and skin divers. The group of aqua lungers and skin divers will show the public in a comical skit the proper use of aqua lung and skin diving equipment. The members of the swim group will perform the intricate art of synchronized swimming by forming beautiful patterns in perfect time to music. The numbers they will be doing are, "Go Calypso, Go!", "The Gay 20's Girls", "The Temple Dancers", "Broadway", "China '58", "Calypso Melody", and the finale.

Mrs. Dorothy Wendt, commissioner of synchronized swimming is in charge. She is working with Mrs. Winifred Bowman, an English teacher at Waipahu High School and Mr. Charles Aina, director of the Ewa Recreation Center.

The public is cordially invited and there will be no charge.



Pictured above are two of the performers, Dorothy Sue Wendt and Dorothea Lou Downes who will be in the synchronized swimming demonstration at the Ewa gym swimming pool. They will do a duet called "The Shah's Favorite".

**Kids in Kitchen No. 1 Hazard**

The No. 1 hazard in the kitchen isn't a sharp knife or a hot burner.

"It's children," the National Safety Council says. "Children underfoot in a kitchen can cause all sorts of trouble."

"They have a habit of leaving marbles, crayons and toy trucks here and there on floors. Such objects on the kitchen floor are booby traps when Mom tires to carry a pan of hot liquid, for example, across the room. She may fall, spilling the liquid on herself or someone else."

The kitchen, the Council says, is the third most dangerous room in the house.

How can you make your kitchen safer?

1. If possible, keep children out of the kitchen. If not, teach them to stay away from cords, appliances and stoves.
2. Turn in handles of utensils on stoves.
3. Keep knives in racks -- and away from children.
4. Wipe up spilled liquids immediately from the floor.

**E.R.A. Kindergarten In Full Swing**



The Ewa Recreation Association pre-kindergarten class is now in session under the leadership of Mrs. Doris Chock. The class started on Monday, September 8. Enrollment this year is 30. Assisting Mrs. Chock is Mrs. Geraldine Lui-Kwan. The classroom is located in one of the school rooms at the Ewa gym.



Here we see Mrs. Chock about to start reading a story book to the class as Mrs. Lui-Kwan helps the children to their sitting position.

**AT THE ALLEYS...**

PUILOA BOWLING LEAGUE	Won	Lost
Lehua	4	1
Ilima	3	1
Maile	2	2
Melia	2	2
Loke	1	3
Pikake	0	4

**E.R.A. INTER-DIVISION LEAGUE**

	Won	Lost
Dutch Boy Paint	47	31
Gaspro	46	32
Serikaku Motors	41	37
Ken's Auto	33	45
Waipahu Florist	32	43
Diamond G	32	43

**Benefit Dance At Ewa Gym**

An Autumn Frolic, sponsored by Friends of Bernie Bicoy, will be held at the Ewa gym on Saturday, September 27 from 8 p.m. to 12 midnight.

The music will be furnished by the Sonics.

The admission charge will be 90¢.

Some people grow under responsibility, others merely swell.

**Classified Ads**

FOR SALE. 35 mm f1.4, 1/1000 sec. NIKON S-3 Camera (latest model) including case, folding flash gun, and filters. Bought in Japan, used only two months, still in perfect condition. Price \$185. Retail for over \$350 in U.S. Call 283-472.

For research only and not for reprint, distribution, or display.