



ROUND HOUSE

LUNCHEON BILL OF FARE



No. 85 at Pearl City Station, about 1910

DINING CAR LU

ENTREES



MAHI MAHI
 Broiled double thick
 Filet served with Round
 House Tartar Sauce
 French Fries or Rice
 Soup or Salad
 Hot French Bread
 2.65

GOLDEN SPIKE STEAK
 Top Sirloin smothered
 with Sauteed Mushrooms,
 Bell Peppers and Onions
 French Fries or Rice
 Soup or Salad
 Hot French Bread
 4.95

**COUNTRY FRIED
 CHICKEN**
 Three Pieces
 of Crispy Chicken
 French Fries or Rice
 Soup or Salad
 Hot French Bread
 2.95

GROUND SIRLOIN
 Choice Ground Sirloin
 topped with
 Bercy Butter
 French Fries or Rice
 Soup or Salad
 Hot French Bread
 2.85

LIVER & ONIONS
 Broiled Calves Liver
 smothered in Onions
 French Fries or Rice
 Soup or Salad
 Hot French Bread
 2.95

REUBEN
 Your favorite corn
 Sauerkraut on Ru
 faced; topped with

CHILDREN'S HOT DOG
 (under 12)
 Grilled Hot Dog
 with French Fries
 .95

ROUND HOUSE HAMBURGER
 Choice Ground Beef broiled to order on
 French Bread \$1.95
 with Cheese
 .20 extra

FIREMAN'S FRENCH DIP
 Generous slices of Beef with Au Jus Sauce
 on French Roll
 2.45



ENGINEER'S STEAK SANDWICH
 U.S. Choice Sirloin broiled to your order on French
 Bread; topped with Bercy Butter
 3.95

Patty of
 with Sh
 and C

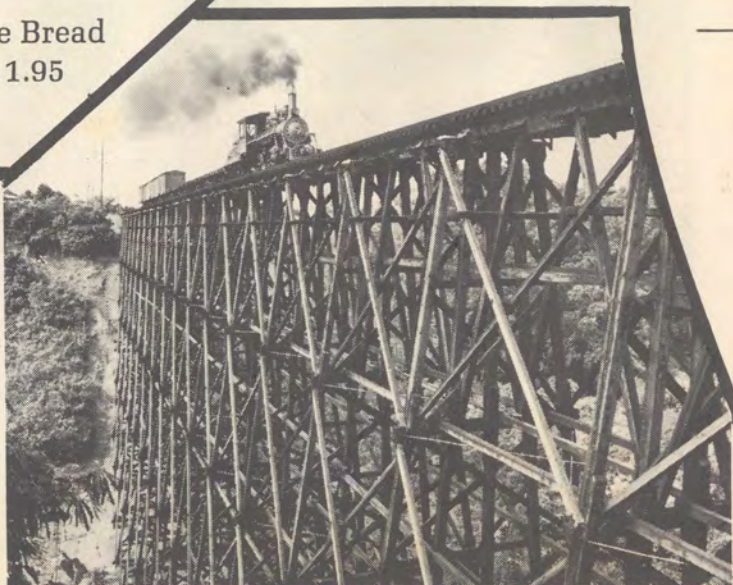
GRILLED TUNA AND CHEESE Grilled Tuna and Swiss
 Cheese on Russian Rye
 1.85

DESSERT

TURKEY AND WATERCRESS
 Breast of Turkey and fresh Watercress on White Bread
 with 1,000 Island Dressing
 1.95

WINES

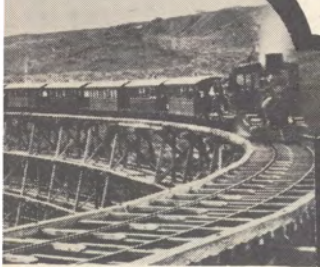
House Wine
BURGUNDY
CHABLIS
ROSE
 Litre 3.50
 Half Litre 1.95
 Glass of Wine .85
 Schlitz Malt Liquor
 on Tap



Timber latticework over Kuiaha Gulch, Maui

INCHION MENU

mainline trestle about 1915



dining car



Conductor and train driver

SANDWICHES

Served with French Fries or Cole Slaw)

Combination of Corned Beef and Russian Rye and served open-faced with melted Swiss Cheese

1.95

SALADS

Served with Hot French Bread and Butter

TRAIN ROBBERS SPECIAL

Ground Sirloin smothered with ROUND HOUSE Chili French Fries Side of Hot Peppers

2.55



SHRIMP LOUIE

Tasty Shrimp on a bed of Mixed Greens with Sliced Tomatoes, Asparagus Spears, Egg Wedges and Louie Dressing.

3.65

"IRON HORSE" SALAD

Crisp Salad Greens, juicy Tomatoes, sliced hard-boiled Eggs, topped with generous portion of Country Ham, Cheese and Turkey Julienne. Dressing.

3.25

WEIGHT WATCHERS

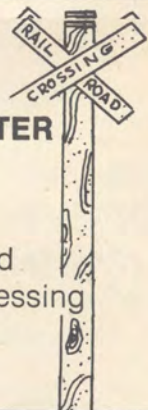
Lean Ground Beef Slices of Tomatoes Cottage Cheese

1.95

Slices of Cold Prime Rib with Tomatoes and Cottage Cheese

2.95

WHISTLE STOP SOUP 'N SALAD HOT ROLLS AND BUTTER



SOUP DU JOUR

& Mixed Green Salad with Choice of Dressing

1.95

PIES

Hot Apple Pie .75

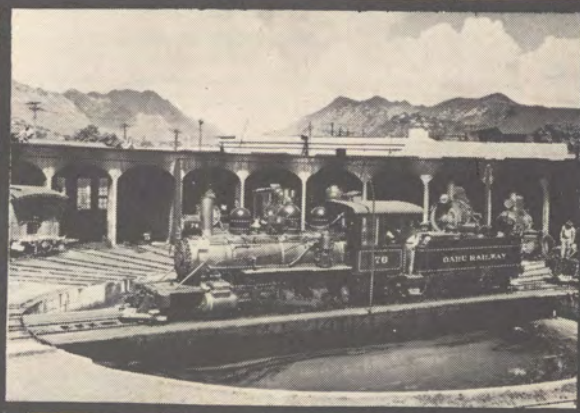
À LA MODE .25 extra

Mud Pie .85

Ice Cream or Sherbet .50

BEVERAGES

Coffee	.30
Iced Tea	.30
Hot Tea	.30
Sanka	.30
Milk	.40



Honolulu's roundhouse, about 1930

LUNCH from 11 am

DINNER 6-10 pm MON.-SAT.
5-9 pm SUNDAYS

SUNDAY BRUNCH 10 am - 2 pm

COCKTAILS from 11 am Happy Hour 4 pm-6 pm

We accept BANKAMERICARD and MASTER CHARGE

OAHU RAILWAY & LAND CO.



Stationmaster and wife inside Waianae Station



No. 88 on a Sunday excursion near Kaena Pt.



Brakeman



Hawaii Consolidated passengers, about 1920



Nanakuli Shelter, WW II sailors from Camp Andrews



Conductor train driver



Kahului Yard; first public rail carrier 1879



Historical Society's #6



Surveyors on the HCR



Rapid Transit, about 1925



Navy railway fire-pumper

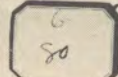


#8, Baldwin 0-4-2T, bought in 1889

LOCOMOTIVE WHISTLE SIGNALS

- Two long & two short --- Look out I am coming.
- One short --- Stop.
- Two short --- Go ahead.
- Three short --- Back up.
- Two long --- I am in trouble.
- Five short toots --- Animal scare. Repeat if necessary.
- Many repeated short whistles --- Fire alarm.

Do not use any whistle signals in addition to those above.



Kahuku Plantation Co. Manager.



Puna trestle

Standard Operating Procedure for all the roads



OAHU RAILWAY & LAND CO.

System as it was about 1913



Maui latticework



A passenger train jumps the tracks



Dole spur at Wahiawa, around 1917



Mr. Dillingham's dining car observation deck



Morning chores at Kahului Yards