

# EWA HURRI-CANE

VOLUME X

Ewa, Hawaii, December 24, 1959

NUMBER 26

PAGE 2

EWA HURRI-CANE

December 24, 1959

**THE EWA HURRI-CANE**  
 Published fortnightly by the Industrial Relations Office at Ewa Plantation Company, Ewa, Hawaii. Phone 28-3591

Managing Editor.....Chas. Ygloria  
 Editor.....Kats Wakatsuki  
 Typist.....Realonga Diaz  
 Staff Photographer.....Gervacio Blue  
 Printers.....PHOTO-OFFSET by Fisher Corporation, Ltd.



### U.S. SAVINGS BONDS

### Parson's Corner

Dr. Williston Wirt, Pastor  
Ewa Community Church

**HAPPY NEW YEAR!**

The Roman god JANUS after whom January is named had two faces. One faced forward like yours and mine. The other was on the back of his head, and faced the rear. He was the god of New Year's Day, which looks back on the year just ending, and forward to the year just beginning. Ancient Romans held wild celebrations and feasts to Janus in January.

We Christians have a festival that we celebrate as marking both end and a beginning. We call it the Last Supper. For Jesus' 12 disciples it marked the end of their close fellowship together. No more would they go from village to village proclaiming the GOOD NEWS of God. Looking backward, it must have seemed to 11 of them that everything they lived by, and for, was pau. Yet as you read John's gospel, chapters 13 to 17, revealing Jesus' words to his disciples at the Last Supper, it becomes very clear that Jesus was not looking back in regret, but forward with expectation, and hope. "Let not your heart be troubled. Believe in God, believe also in me...Abide ye in my love....in this world ye have tribulation, but be of good cheer, I have overcome the world".

Looking back from our advance place in history, we can understand that Jesus was right, and the disciples wrong, in their viewpoint. It was the Last Supper for those present in the upper room. It was the First Communion for all the thousands and millions who in generations to come would participate in that sacred re-enactment of the broken bread, and the cup. Throughout all these years devout and reverent followers of Christ have received new courage and consecration as they "did this in remembrance of Him".

As a Christian Pastor, I would like to ask what meaning this New Year's Day has for you. Those with pagan incentives will, of course, make wild whoopee in the Roman manner of "honoring" Janus. A few who call themselves Christians will prefer to face backward to "good old days" now pau. But most Christians are going to enter 1960 with Jesus' words evoking courage and high expectations: "Let not your heart be troubled, neither let it be afraid. Believe in God, believe also in me". **HAPPY NEW YEAR!**

- To leave the old with a burst of song,
  - To recall the right and forgive the wrong;
  - To forget the things that bind you fast
  - To the vain regrets of the year that's past;
  - To have the strength to let go your hold
  - Of the not-worth-while of the days grown old,
  - To date go forth with a purpose true,
  - To the unknown task of the year that's new;
  - To help your brother along the road,
  - To ease his work and lift his load;
  - To add your gift to the world's good cheer.
  - Is to have and to give a Happy New Year.
- (R.B. Beattie)

It's up to you to prove you are eligible for Social Security payments. You will need your Social Security card, proof of your date of birth, and proof of recent earnings when you file for benefits. A field representative from the Social Security office will be at the Industrial Relations Department on Monday, January 4, 1960, at 1:00 p.m.



### HERE'S HOW TO KEEP IT MERRY

The Christmas holiday season is a period when more than the usual number of hazards exist on the road. Because of that fact, we are all reminded of the following traffic hints to keep this a safe and happy holiday season.

- + Keep your mind on your driving and walking.
- + Stay away from the wheel if you have been drinking. And drinking pedestrians should stay out of the street.
- + Reduce your speed to offset the extra holiday danger.
- + Be wary of every other driver.
- + Start your trip in time and take it easy. Insist upon and support rigid traffic enforcement, especially against speedsters and drinkers.

KEEP IT SAFE.....KEEP IT MERRY



### Season's Greetings

In this season when holiday spirit prevails, the thought "peace on earth and goodwill to mankind" is manifested in many ways to impress upon us that life is only as good and enjoyable as we ourselves make it.

Tomorrow we celebrate Christmas, the day dedicated to Jesus Christ who taught us that the most noble gift of all is what we have in our hearts to give. Let us all give one another the priceless gift of friendship bound by tolerance, compassion and understanding.

In a week we greet New Year's day and move forward into 1960. Let us leave behind the mistakes and whatever unpleasantness that occurred in 1959 and take with us into the New Year the good that we have gained and the lessons we have learned so that we may all contribute toward a richer and fuller life for everyone here at Ewa.

With these thoughts I join you in celebrating Christmas, in welcoming the New Year and in wishing one and all the best that the future has to offer.

*Jim Amiel*

For research only and not for reprint, distribution, or display.

### Fred Stokes to Leave for Olaa Position



Ewa's loss is Olaa's gain! James N. Orrick, Ewa Plantation Manager, announced recently that Fred Stokes will be leaving the Ewa scene. Fred, who has been a shift sugar boiler at Ewa since September, 1949, will shortly assume the duties of boiling house superintendent at Olaa.

Prior to his employment at Ewa, Fred was with the H.S.P.A. sugar technology department. He served in the Armed Forces before that, being with the Army on Guam.

Though born in Australia, Fred claims to be more than Hawaiian at heart. He is a naturalized citizen and is a graduate of Iolani high school.

He has always taken an active part in community activities and is president of the Ewa Recreation Association, past president of the Ewa School P.T.A. and is past vice president of the Toastmasters chapter of the Toastmasters International. He has also served as chairman of the Chemical Engineering section of the Hawaii Sugar Technologists.

### E.R.A. Officers To Be Elected

The Ewa Recreation Association election of officers for 1960 will be held on Monday, December 28. The ballots will be distributed to the members through the plantation departments. Those who do not get their ballots are asked to pick one up at the gym office.

Running for the office of president is Ernest Chang (outright) and for the office of vice president, Gervacio Blue (outright). Candidates for the Executive Committee are Max Galapia, Takaki Yamaoka, Masato Sawa, Kazumi Abe, Joseph Fernandez, James Smith, David Yamamoto, William Mori, Kiyoshi Okano, and Geraldine Lui-Kwan (outright).

### Alien Registration January 1-31

All aliens living in this country on January 1, 1960 must submit address report card to the Commissioner, Immigration and Naturalization Service within 30 days from January 1st as required by the U.S. Immigration law.

Any alien temporarily absent from the country during the reporting period shall report his address within 10 days after his return. Failure to do so could lead to deportation.

Go to any United States Post Office and ask for an Annual Address Report Form I-53. Read the instructions carefully and complete the form. Take the completed card to the post office and hand it to the clerk. Do not mail the card yourself.

If you need assistance in filling out the form, go to the Ewa Japanese Clubhouse on Tuesday, January 5 at 6:30 p.m. The following people will be there to help you with the form-- Shunichi Kikuta, Kiyoshi Okano, Kojiro Nakamura, Maruyuki Ogawa, Alyce Yamane and Judy Nagatani.

### Social Security Tax Rate Goes Up January 1, 1960

Beginning January 1, 1960, the Social Security tax rate goes up from 2 3/4% to 3% on your yearly earnings up to \$4,800.00. This is in compliance with the Social Security Act as amended by Congress last year.

The one-half percent tax increase means 1/2 cent more to pay on each dollar you earn. Because the Company matches your Social Security tax cent-for-cent and dollar-for-dollar, this also means an added tax load to the Company.

The tax rate and the maximum wage rate were raised to take care of increased benefits to those eligible for Old Age, survivors and disability insurance payments.

### Valentine Dance

Ewa Elementary and Intermediate School will hold its annual Valentine Dance on Saturday, February 13, 1960 at Ewa Gym. Fifty charming hostesses will be on hand to greet you, and dancing to the smooth rhythms of the popular Sonic Orchestra will be from 8:00 to 12:00. Dress is semi-formal, and the price is only \$1.00 per person tax exempt.

Proceeds from the benefit dance will be used to purchase educational aids chosen by both teachers and pupils, from a list which includes more books for Ewa School Library, playground equipment, and additional science kits.

Kindergarten to grade 3



JOHN P. SITRO...receives congratulations and well wishes from Assistant Manager Ed Bryan as Joseph Budge, Industrial Relations director, looks on. Mr. Sitro, now on his extended vacation, retires on March 31, 1960.

### Your Social Security

Would you like to help your Social Security office shorten the time you may have to wait to get your first benefit check? No payments can be made to you unless you make a claim. Your claim cannot be approved without evidence that the law's requirements are met. So if you get your proofs ready ahead of time, and bring them with you when you make your claim, that important first payment will get to you sooner.

Almost everyone making a claim for monthly benefit must prove his age or the date of his birth. A birth certificate is best, but many other items will do: for example, a baptismal certificate, a foreign church record, immigration papers, or a vaccination record. Any formal document or record which is at least ten years old can be considered, and many people have proven their age with a church, school, employment, or hospital record, an old insurance policy, or a family Bible in which the date of birth was entered. People born outside the United States should bring their naturalization papers to the Social Security office.

For quickest payment, get in touch with your nearest Social Security office at least a month ahead of time, and bring your proofs with you.

children will bring home a form on which parents may request the number of tickets they are willing to have their children try and sell. Pupils of grades 4 through 9 will handle their own tickets.

So, come one and all, enjoy a wonderful evening of dancing, and help our school at the same time. Remember the date-- Saturday, February 13th. We'll be seeing you!

### John Sitro Ends Long Career at Ewa

John P. Sitro, shift sugar boiler, has left Ewa for an extended vacation prior to his retirement date on March 31, 1960. Born in Hamakua, Maui in 1895, Mr. Sitro has devoted most of his life to the sugar industry. Prior to coming to Ewa, he worked for three years at McBryde Sugar Company on Kauai as sugar boiler. On August 1, 1921, Mr. Sitro came to Ewa. The first three months here, he was a boiling house mechanic and for the next eight years he was a night sugar boiler. Since then he held the job of shift sugar boiler.

Mrs. Sitro, a school teacher at Ewa elementary and intermediate school, is accompanying her husband on the vacation trip to the Mainland.

Mr. Sitro said he "leaves a lifetime of fond memories. I have worked with fine people at Ewa. Please convey my Aloha to the Ewa Plantation staff, my fellow workers and their families. It's truly hard to leave as fine a place as Ewa."

### Credit Union to Hold Annual Meeting On January 22

The annual general meeting of the Ewa Federal Credit Union will be held at pau hana on Friday, January 22 at the Ewa Social Hall.

The main features of the meeting will be the election of new officers, presentation of financial reports by the treasurer and various committee members and the declaration of the dividend rate.

Door prizes will again be given out. Refreshments will also be served.

### It's Time to Renew Your E.R.A. Membership

It's time again to renew our E.R.A. membership. Let's think about it now and join the Association the first chance we get.

The sooner we join, the sooner we will be able to take advantage of the many programs offered by your E.R.A.

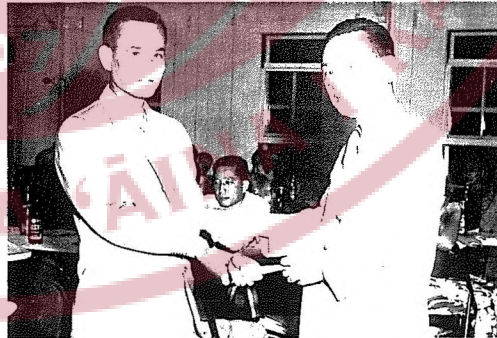
For \$3.00 we can't ask for a better deal.

### Soko Oshiro to Head Ewa Japanese Club In 1960

The 1960 officers of the Ewa Japanese Club are: Soko Oshiro, president; Haruyuki Ogawa, first vice president; Hira Kameoka, second vice president; Yoshiyasu Terao, Japanese recording secretary; Akio Sakai, Japanese corresponding secretary; Shinshichi Yamaki, asst. Japanese corresponding secretary; Kiyoshi Okano, English secretary; Henry Katsura, asst. English secretary; Ichiro Yamane, treasurer; Susumu Ishii, asst. treasurer; Choshiro Kato, auditor; and Goichi Kazunaga, auditor.

Other members of the board are: Kameshiro Abe, Shigeru Tsutsumo, Wataru Takaki, Hajime Takemoto, Jujiro Numasaki, Hirokichi Hoshino, Kiyoshi Kawakami, Masatoshi Sugimoto, Jack Uesugi, Isamu Neva, Ichiro Asano, Hirotsuke Oshita, Yuji Endo, Fukuju Abe, Makoto Hashimoto and Kaname Tashiro.

The committee chairman elected by the board are: Alyce Yamane, alien registration; Yuji Endo, entertainment; Fukuju Abe, welfare; Kiyoshi Okano, finance; Choshiro Kato, hall manager; Isamu Neva, publicity; Wataru Takaki, landscaping; and Makoto Hashimoto, refreshments for meetings.



Outgoing president, Shunichi Kikuta, passes on the gavel to his successor, Soko Oshiro. This took place early this month at the installation of new officers.

### Ewa Judo Club To Form Again

Here is an opportunity for youngsters and teenagers to learn Judo. Starting January, 1960, the Ewa Judo Club will be revived to teach Judo to interested members of the community. The instructors will be Yoshiyasu Terao, Kaname Tashiro and Kichisaku Sato.

Until the club is settled, the "C" Village clubhouse will be used. Classes will be divided in two groups--9 years to 15 years, and 16 years and up.

The membership fees for the elementary group will be \$1.50 a month for students of Ewa Japanese Language School; others will be charged \$2.00 per month. The high school group will pay a fee of \$2.50 a month and the older group, \$3.50 a month.

Judo outfits will cost about \$7.00 to \$8.00 for elementary group and \$9.00 to \$10.00 for high school group.

If you have any question or are interested in joining the club, please call Y. Terao (283-191) or K. Tashiro (283-532).

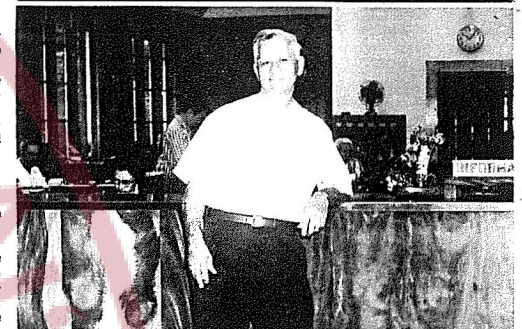
### Troop 17 News

Boys Scouts of Troop 17 gave a Christmas party for their parents last Monday evening at the Tenney Recreation Center. The scouts prepared and cooked for their guests a chicken hekkia dinner.

Following the dinner, patrol skits were presented by the boys and Ronald Nakasone showed slides of his trip to the World Jamboree held in Manila last summer and of Japan and Bangkok.

About 100 scouts and guests attended the party.

### Through the Town



GENTLEMAN FARMER....visits old stamping grounds. Manuel Thomas, our former chief payroll clerk who took an early retirement in February, 1957 to reside in Walnut Creek, California, dropped in to see his old friends at the main office. Mr. and Mrs. Thomas are spending two months with their relatives in Ewa.

NEW ARRIVALS....ERROL WAYNE, second child and first son of Mr. and Mrs. MAXIMO CADELINIA of Fernandez Village was born on Saturday, November 28 at the Ewa Hospital. He weighed 7 pounds 1 ounce at birth. Maximo is with the irrigation division.

Monday, November 30, Mr. and Mrs. PEDRO BATALON of "C" Village were blessed with a daughter. They named her ARLEENE DINAH and she weighed 5 pounds 3 ounces at birth.

Mrs. Batalon is also with the irrigation division. A second child, a son, was born to Mr. and Mrs. KAZUSO SUYAMA of Tenney Village on Friday, December 18 at the Ewa hospital. The lad weighed 7 pounds 14 ounces at birth and was named COREY SHUJI SUYAMA. Mr. Suyama is a crane operator with the harvesting division.

At the Ewa hospital, Mr. and Mrs. KENNETH SOMA of Lower Village became proud parents of a daughter. JENNIFFER ANNE tipped the scales at 8 pounds 9 ounces at birth. Her two brothers are Randall (3) and Jeffrey (1). Their dad is one of our Gene Hauler drivers. DEC 19 1959

### With the Golfers...

Tokuo Yoshida (83-13-70) and Erling Mitsumoto (85-15-70) tied for the December Ace trophy in the tournament held last Sunday at the Lilehuwa golf course. However, Tokuo was awarded the ace trophy since Erling is a previous ace winner.

Tied for second place were Sakae Kawamoto (84-13-71) and Henry Gandsll (79-8-71). Grouped at third place were Mako Masuyama (84-12-72), Robert Kurakoa (88-16-72) and Tom Yoshimoto (89-17-72).

On Tuesday, December 8, Mr. and Mrs. BENITO APOSTADIRO of Fernandez Village were the proud parents of a son. The child was named ALVIN BLANE and he weighed 7 pounds 8 ounces at birth. Benny is with the cultivation division.

Mr. and Mrs. AMBROCIO JULIAN also from Fernandez Village welcomed the arrival of their third child, a son on Saturday, December 12 at Ewa hospital. EDWIN JAMES weighed in at 7 pounds 14 ounces at birth. The Julians have two other children Madeline (3), and Merlin (1). Ambrocio is with the irrigation division.

NEW WEDDS....LILLIAN SATO, daughter of Mr. KICHIZO SATO of Tonney Village and SEICHI TAKUSHI of Pepekeo, Hawaii exchanged wedding vows at the Church of the Crossroads on December 5. A reception was held at the Wistarla.

AGAPIO TAJUDAR of Middle Village is leaving for the Philippines on January 29 on the President Cleveland to take permanent residence in Badoc, Ilocos Norte, P.I. Mr. Tajudar was 65 in August. He retired from this Company on August 31, 1959.

### School for Adults

Registration for the second semester of the Waipahu Community School for Adults will be held on January 5, 12 and 19 during the hours of 6:30 p.m. to 8:30 p.m. at the Waipahu high school.

Wives of retired workers applying for Social Security benefits should take proof of age with them at the time they call at the Social Security office.