

NOTICE OF HOUSE VACANCY

E.P. Co. Employees Only

Tenney Village 99b - Apartment
Rent \$16.50 per month
Tenney Village 102a - Apartment
Rent \$16.50 per month

Application should be made
before 4:30 p.m., March 4, 1955



VOLUME VI

Ewa, Hawaii, February 25, 1955

NUMBER 4

Notes From Our Medical Committee

Here are some of the recommendations considered by the members of the joint medical committee at the last meeting.

Ways of improving the parking situation at the hospital were discussed. Probably the best way would be to make diagonal parking spaces in the open area in front of the hospital. This is being studied.

Stalls or compartments in the dispensary to give more privacy were mentioned. However, this would be a major project and requires much thought. The booths must be soundproof, should have running water and should be properly equipped. Then too, there might not be enough room in the present dispensary. Portable screens for booths on a temporary basis will be arranged.

A suggestion to make the waiting room more comfortable is being studied. This is the area where we report to the receptionist. The problem is to enclose it but yet not be too hot during the summer.

About house calls. When the doctor receives a request for a house visit, he decides whether he could do the most good for the patient by going to the house or by having the patient brought to the hospital. In cases of broken legs and other serious cases, there is no question but that he would go to the house.

This is important. Anyone calling the hospital in case of illness should give some details of the illness. This helps the doctor in making his decision. Also, this enables the doctor to know what equipment to have available.

NOTICE OF JOB VACANCY

E.P.Co. Employees Only

PORTABLE PUMP SPRAYER - GRADE III
(Temporary Job--May last up to
four years pending return of
employee now on military leave)

Apply before 4:00 p.m.
March 2, 1955



ACCOUNTANTS FROM FORMOSA....visited us last week. They were on their way home from studies at the University of Illinois. These representatives of various firms on Formosa were Miss Nancy F. Lee, John T.Y. Chang, Wendell Y. Kung, Frank Y. F. Liang, Tong-Yung Lee, Young C. Wong, Carl C.C. Hwang, Robert T.C.Hsu, Hwang Chu-Chai and Sheng Li-Yue.

Group From Formosa Among Visitors At Ewa Last Week

With the attention of the world focused on Formosa, it may be interesting to note that last week, a group from Formosa were among those touring our factory.

The group was on its way home after a period of study at the University of Illinois. Members of the group studied modern principles of accounting and business practices. Sponsors of their trip were the Foreign Operations Administration and the International Cooperation Center-Representatives of the I.C.A. and the University of Hawaii handled their local tours.

In the group were Wendell Y. Kung, auditor, Taiwan Sugar Corporation; John T.Y. Chang, chief accountant, Sin Chu Coal Mining Company; Tong-Yung Lee, head of the animal industry department of Taiwan Agricultural Research Institute; Young C. Wong, assistant controller, Taiwan Agricultural and Forestry Corporation.

Also Miss Nancy F. Lee, chief cost accountant, Taiwan Agricultural and Chemical Works; Frank Y.F. Liang, deputy controller, Taiwan Industrial and Mining Corporation; Carl C.C. Hwang, assistant manager, banking department of Bank of Communications; Robert T.C. Hsu, comptroller, China Merchants Steam Navigation Company; Sheng Li-Yue, Taiwan Cement Corporation; Chang Tsung-Shu, Civil Aeronautics Administration; and Hwang Chu-Chai, Bank of Communications.

First 20 Homes Near Completion; Rent Set

The first 20 homes of the housing project at Fernandez Village will be finished by the middle of March. The monthly rent for each of these new three-bedroom houses is \$42.00.

Top priority in applying for these houses is given to those people who had been displaced to make room for the new water pipeline. Next are those displaced due to the tearing down of houses. The present point system in assigning homes is deciding basis between individuals.

Work on the area for the next 50 houses will probably start in May.

Six W-type houses from Mill Village (similar to those in Tenney Village) will be moved. The exact location of these houses in Fernandez Village is still to be planned.

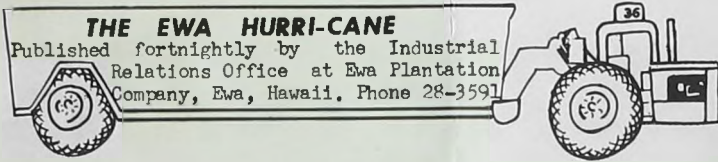
Introducing...



Mr. Panter

Somewhat belatedly we want to introduce a visitor from Lihue, Kauai, Mr. George Panter, who is the chemist at Lihue Plantation Company. Mr. Panter has been at Ewa observing the processes in the boiling house and he has been at Ewa for the past two weeks. His work included cleaning work in the fireroom, cleaning plant, and crushing plant. Mr. Panter was lavish in his praise of the cooperative spirit of all those he has come in contact with in the factory.





HAWAIIAN SUGAR PRODUCTION SUMMARY—1954 vs. 1953
Short Tons—96°

Sugar Plantation Company	1954	1953
Haw'n Comm'l & Sug. Co., Ltd.	155,256	160,941*
Oāhu Sugar Co., Ltd.	75,676	82,537*
Waialua Agricultural Co., Ltd.	66,277	55,047
The Lihue Plantation Co., Ltd.	63,681	65,251*
Ewa Plantation Co.	61,500	61,643
Pioneer Mill Co., Ltd.	56,218*	52,165
Olaa Sugar Co., Ltd.	49,721	55,967*
Kekaha Sugar Co., Ltd.	46,256*	44,698
Kohala Sugar Co.	42,059	49,925*
Hawaiian Agricultural Co.	35,613	34,587
Grove Farm Co., Ltd.	34,202	34,931*
Hilo Sugar Plantation Co.	31,074*	29,527
Hakalau Plantation Co.	30,685*	30,401*
Onomea Sugar Co.	30,682*	29,189
Pepeekeo Sugar Co.	29,019*	26,988*
Olokele Sugar Co., Ltd.	28,732	31,439*
McBryde Sugar Co., Ltd.	28,462	29,432*
Hamakua Mill Co.	28,198	29,131*
Wailuku Sugar Co.	27,018*	24,200
Laupahoehoe Sugar Co.	26,511	26,841*
Honokaa Sugar Co.	24,081	31,562*
Paauhau Sugar Plan. Co.	19,195	19,744*
Kahuku Plantation Co.	19,029	19,658
Kaiwiki Sugar Co., Ltd.	17,577	18,565*
Gay & Robinson	16,512	16,375
Hutchinson Sugar Plan. Co.	16,016	19,275*
Kilauea Sugar Plantation Co.	13,701	15,023*
The Waimea Sugar Mill Co.	4,396*	4,274
TOTALS	1,077,347	1,099,316*

*Production Record

NEWS VIEWS
Record Sugar Wages In Hawaii

Last year the Hawaiian sugar industry paid an average daily wage of \$10.58 to hourly rated employees.

How was it possible for Island sugar plantations to pay this record wage—the highest in the world among agricultural workers on a year-round basis?

It boils down to increased productivity.

Higher wages and shorter hours are possible only when each individual produces more.

And how does this increased production per worker come about?

First there is the development of better production methods through research.

The second source of greater productivity is tools. Every plantation provides new and better machines, such as push rakes and knapsack sprayers, which increase production. The money for these tools comes from the investments of stockholders in the company.

For instance, in 1939 44,600 employees in the Hawaiian sugar industry produced almost a million tons of raw sugar. Last year about 21,000 employees with more and better machinery and tools produced over a million tons of raw sugar.

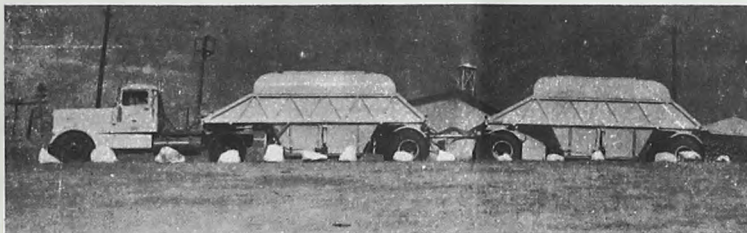
This means each employe last year produced more than twice as much as in 1939. This increased production means higher wages for each man.

The third source of greater productivity is the improvement in health, training and skill of American workers.

The fourth source of increased productivity is better methods of business management. It requires a business staff of well-trained men and a fast, accurate system of records and reports.

The fifth source is more interested workers. Workers who take an active interest in their jobs can make important contributions to production methods.

New 65-Foot Trucks To Haul Sugar To Oahu Bulk Storage Plant Soon



A fleet of 18 of these large Oahu Transport Co. trucks will soon be hauling bulk sugar from rural Oahu's four plantations to the bulk storage plant at pier 19 in Honolulu.

Each of these semi- and full trailer trains measures 65 feet from bumper to bumper and has a payload of 26 tons of sugar.

Nine units are expected to be ready for operation about March 1—two of them already haul from Ewa Plantation Co. to the Aiea plant of the California and Hawaiian Sugar Refining Corp. Nine others are slated for production during this month and early March.

The bulk plant is expected to be able to receive sugar about the middle of March.



A lot of fuss has been made lately about an American horse and a German dog that have been taught to drive an auto just like a human being.

What's so amazing about this? It seems only fair. People have been driving like animals for years. You hadn't noticed it? Then come with me for a little tour of our modern Highway Zoo. Here's what we see:



the Wildcat

This is the vicious type—the snarler who hates everything on the road, most of all you. He fancies himself as the world's one and only real hep driver and regards all others as dopes. A big hex on him!



Sugar News

New Citizen



NEARING COMPLETION....twenty of the first fifty houses will be completed around the middle of March. The other fifty houses will go under construction in May. The rent for these houses will be \$42.00 a month.

You might be interested to know that six of the W-type homes in Mill Village will be moved to this area---where they will be moved is not yet known!

Veteran Returns



N. Okoji

Having completed his 2 years hitch in the Army last December, Noboru Okoji of "B" Village will be back to work at his former job, Knapsack Sprayer, on the plantation on March 7th.

While in the Army, Noboru served 11 months in Korea with the 40th Infantry Division.

IN SYMPATHY

The people of Ewa extend their deepest sympathy to the family of the late Kamasuke Higa of Mill Village, who passed away on Wednesday, February 23rd.

Mr. Kamasuke Higa was pensioned from Ewa Plantation Company on July 1, 1950.

He is survived by his widow, Kamado, son, Hoyei, and daughter, Chiyomi.

Heart Association Lists Six Ways To Protect Heart

The Hawaii Heart Association reports that there are six things persons can do to protect their hearts and live a longer and happier life.

One—Avoid self-diagnosis. The Association advises that "if you haven't had a health and heart examination during the past year, see your doctor soon."

Two — Avoid over-exertion. "Strenuous activity will not harm a healthy heart. But the threat is real when the heart is diseased. Then, extra effort may prove dangerous."

Three — Avoid over-fatigue. "You should get an amount of sleep you know you need. Your heart works for you around the clock every day of your life. When you rest or sleep, its work load is lightened."

Four—Avoid over-weight. "Excess weight loads extra work onto your heart and blood vessels. You will look, feel and work better—and you are likely to live longer, if you keep your weight close to normal."

Five—Treat respiratory infections promptly. "The cold weather months on the average bring about a 13 percent increase in deaths from heart and circulatory disease," reports the Association. "Don't take infections lightly; get prompt treatment for them."

Six—Avoid worry. "Don't burden your heart with needless worry. Worrying cures or prevents nothing."

"Care for a spot of tea? In the shower? Or do you prefer the bathtub? No, never mind the sugar, thank you. I'll use my soap."

It may not sound quite like that, but sugar is being tried in cleansing agents---detergents. Sample bars will be made soon through experiments by the Sugar Research Foundation, Triplow Products Inc. and Colgate Palmolive Company.

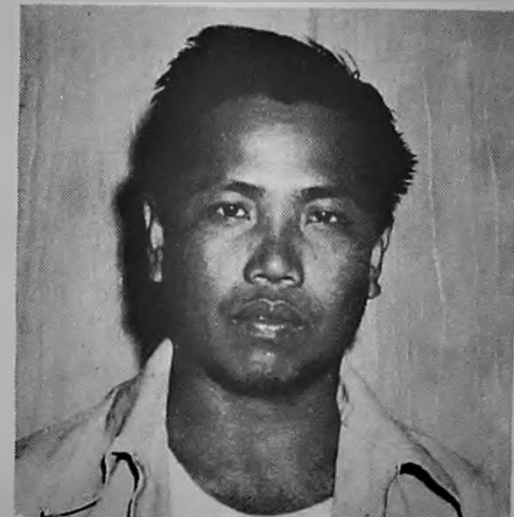
What else? Well, now sugar is being tried to help get rid of insects, rats, fungi and other pests. It is known that sugar is more quickly absorbed than any other food. It is hoped that sugar will carry along the poisons chemically attached to it in these pesticides. (Hope the pests go for sugar like we do!)

The H.S.P.A. is trying fiber concrete. This may possibly have the combined qualities of concrete and lumber.

How? Maybe it can be sawed or worked like wood and resist heat or water like concrete. Bagasse replaces the sand and gravel used in ordinary concrete.

Right now the experts are thinking of using it for irrigation flumes but are studying its possibilities as other building materials.

How about that rain! In the 24-hour period ending Thursday morning, the rainfall averaged over 6½ inches. Hard-hit were our lower area toward Ewa Beach all the way up to Honouliuli. The gauge at No. 7



M. Cadelinia

The most recently naturalized citizen in Ewa is Maximo Cadelinia of Filipino Village. He received his citizenship papers on January 22nd.

Max came to Hawaii in 1946 from Bacarra, Ilocos Norte, Philippine Islands. He worked at Wailuku Sugar Company in Maui for 3 months prior to coming to Ewa Plantation Company.

Last June, Max completed his 2 years service in the army and returned to his former job, Tournahauler Serviceman.

pump showed 7.66 inches with Field 62 being the wettest, 7.86 inches. The Waimanalo area was driest, D.P.D. having 5.26 inches.

The two-day period ending Thursday morning averaged about 9½ inches. Other figures: most-Field 79.1, 11.29 inches; least-Waimanalo, 8.11 inches.

And it was still coming down when we wrote this!



IN COMMEMORATION....of Abraham Lincoln's birthday, students of Ewa School participated in an inspiring program of poems, speeches and songs.

Above picture shows just a small fraction of students that came up to grace the Lincoln statue with homemade leis.



Ewa Takes Sixth Straight Win To Stay On Top Of The I.L.W.U. Softball League; Beats Regional Jets 12-6

BY TAKESHI ISHIHARA

Ewa notched its sixth consecutive victory with no defeat by trouncing the Regional Jets 12 to 6 on Sunday at the Ala Moana field.

The Jets took the lead in the first inning by scoring 2 runs on 3 bases on balls and a lone single but the Green & White boys from Ewa countered with 4 runs in the second frame and 5 more runs in the 4th and were never in danger after that.

Kena Nishimura and Toki Kawakami combined their pitching arms to keep the Jets' 8 hits well scattered.

James Ornellas was again the big gunner with 3 hits on 5 trips to the plate. Hakaru Tamura with a 3 for 4 and Yoshio Oshiro with a 2 for 4 also aided the cause at the plate for the winners.

Home runs were hit by Toki Kawakami for the winners and Anzai for the Jets.

	Runs	Hits
Ewa	12	14
Jets	6	8

League Standings	Won	Lost	Pct.
Ewa	6	0	1.000
Hapco	6	0	1.000
Longshore	4	2	.667
Libby	4	2	.667
CalPack	3	3	.500
Love's Bakery	2	4	.333
Wharf Clerks	2	4	.333
American Can	1	5	.167
Alea C&H	1	5	.167
Regional Jets	1	5	.167

Kite Contest Date Set

Back To March 26th

The E.R.A. Kite Contest was postponed to Saturday, March 26th due to its conflicts with the basketball clinic and small fry basketball league games which are now being held at the gym.

However, the E.R.A. hopes that you do not stop working on your kites. You now have more time to polish up on your work. So kids, keep working on your kites and have your winning entry ready by March 26th.



Here are the results of last Saturday's basketball games played at the Ewa gym.

Beginners League Group I defeated Group III 14 to 11. High scorers of the game were Nathan Yoshioka, Wallace Sunahara, Butchal Matsukawa, Melvin Sato and Joe Kekoanui with 4 points each. Group II trounced Group IV 11 to 2 in the second game. Allen Izumihara and Ben Narciso of Group II scored 5 and 4 points.

12 Years and Under Mill Village over Ewa Fils 20 to 18. High scorers of the game was Warlito Querubin of Ewa Fils with 12 points. For Mill Village, John Bolosan scored 8 points.

20th Century over Tenney Village #1 22 to 16. Milton Oshiro bucketed 14 points for 20th Century and Brian Fukunaga made 6 points for Tenney Village.

Tenney Village #2 over Lower Village 40 to 4. Tenney Village ran wild in this game with George Miranda and Leonard Shinogi pacing their team with 10 points each with the help of Patrick Soma's 9 points.

15 Years and Under Lower Village over Ewa Fils 22 to 20. High scorers of the game were James Sato and James Cui with 10 points each followed by Kenneth Hashimoto with 8 points.

20th Century over Tenney Village 24 to 22. Roy Takamoto led in scoring in this game with 8 points. Other high scorers were Richard Tsurumaki, Richard Tanaka, Thomas Mishina and Kenneth Lum Lee with 6 points each.

Masao Morikawa Wins Through The Town

February Ace Trophy

At the last Sunday's outing of the Ewa Golf Club at the Leilehua Golf Course, Masao Morikawa carded 90-17-73 to win the February Ace trophy.

Tied for second with net 74's were Jimmy Kau, Sakae Kawamoto and Bob Ouchi. Finishing one stroke behind the pack was Asao Ugata with 97-22-75.

The Golf club's next tournament will be held on Sunday, March 6th at the Kalakaua Golf Course. The Tenney Center Tavern trophy will be at stake.

NEW ARRIVALS.... It was a girl for Mr. and Mrs. Warren Gibson of Renton Village. The baby arrived on Sunday, February 13th at the Ewa hospital and was named Anne.

Mr. and Mrs. Fernando Flores of Filipino Village greeted their 6th child on Saturday, February 12th at the Ewa hospital. The baby girl was named Lurline. She weighed 4 pounds 5 ounces at birth.

A bouncing baby boy of 7 pounds 7 ounces was welcomed by the proud parents, Mr. and Mrs. Takeshi Shimakage of Tenney Village, on Tuesday, February 15th at the St. Francis hospital. This is their first child and they named him Lester Takashi.

Ewa Y.B.A. News

BY KUNITSUGU KAMEOKA

The Ewa Y.B.A. will hold its annual installation and membership drive banquet on Saturday, March 5th at 7:00 p.m. at the Mok Larn chop suey house. About twenty-five members are expected to attend this shindig.

The annual United Y.B.A. bowling league is scheduled to start on Tuesday, March 8th. The matches will be held at two different alleys---the Pearl City and Wahiaua alleys.

The Ewa Y.B.A. will be represented by two teams. Our team will be handled by Kuni Kameoka and the other by Ernest Wakimura.



H. Rosario

Henry V. Rosario, son of Mr. and Mrs. Venancio Rosario of Tenney Village was promoted to Airman First Class early this month.

FUTURE HIGH SCHOOL STARS.... listen to Tommy Kaplukukui's valuable tips on how to play basketball at the clinic. This is a four sessions clinic and it still has two more to go. The sponsor of this clinic is the Hawaii Pan-Pacific. About eighty youngsters are participating in this clinic.

