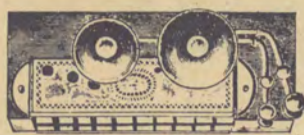


NOTICE:

HOURS

Monday thru Thursday
5:00 p.m. to 10:00 p.m.
Friday and Saturday
5:00 p.m. to 11:00 p.m.
Sunday
4:00 p.m. to 10:00 p.m.
Phone: 531-1513



No. 7460. Our Special Concert Harmonica, with bells. Best quality; ten double holes with forty reeds, brass reed plates, fancy engraved German silver covers. Two bells. Our special price, each..... \$6.65
Per doz..... 75

Mandolin Cases.

No. 7194. Brown Canvas, leather bound edges, flannel lined, handle and patent fastenings. Our special price, each \$1.50
No. 7196. Mandolin Case made of russet or black leather, extra quality, hand sewed, flannel lined, same as illustration. Special price, each..... \$5.25

SPALDING'S BASE BALL UNIFORMS.

COMPLETE.
Including shirt, padded pants, cap, belt and stockings.
No. 81020. Uniform.....\$13.50
No. 81021. "University" uniform..... \$10.50
No. 81022. "Interscholastic" uniform..... \$8.70
No. 81023. "Club Special" uniform..... \$6.25
No. 81024. "Amateur Special" uniform..... \$4.30
Our line of flannels for base ball uniforms consists of the best qualities in their respective grades, and the most desirable colors for base ball uniforms. Each grade is kept up to the highest point of excellence and quality improved wherever possible every season. Owing to the heavy weight flannels used in our Nos. 81020 and 81021 uniforms, we have found it desirable, after many years of experience, to use a little lighter weight material for the shirts; this makes them more comfortable, much cooler, and wear just as well as the heavier weight. If, however, you prefer the heavier goods for the shirts, they will be supplied at same price, but only when specially ordered.

Electric Washer.

No. 16745. Made of the best Virginia white cedar, electric welded wire hoops. Price..... \$13.50
The cut shows the exterior of our celebrated Electric Washer. This machine is constructed of the best Virginia white cedar, and is stronger, more nicely finished, and larger than any round machine on the market. It is supplied with our improved gearing, fully galvanized. The inside of the machine is fully corrugated, similar to a washboard, there being no nails or blocks of any kind on the inside. The machine is made with large end of tub down, all the parts are made of extra heavy galvanized wire, and are welded, and are warranted not to break or fall off. Instead of using a square wooden post to work the dolly, we use a square galvanized iron rod, making it impossible to tear the most delicate fabric, as the dolly and standard are automatically adjusted to the quantity of clothes contained in the machine, so it offers nothing in which the clothes can catch.

No. 6311. Improved long distance telephone, with transmitter and receiver, same as above but with a battery all instead of the magnet coil, the connection is to be made with a push button and is a thoroughly reliable instrument. Price with case complete as shown in cut, made of oak or black walnut. Each..... \$7.00

No. 6312. Desk 'phone, one of the neatest and most artistic desk 'phones made; has neat pedestal with nickel plated standard. Our regular type of long distance transmitter with the small new style receiver. Each..... \$11.50



Photograph Yourself

Your Voice.

CAMERAS AND PHONOGRAPHS AT INSIDE PRICES.

MORE PLEASURE FROM THESE TWO INSTRUMENTS THAN TWICE THE PRICE WILL BUY IN ANYTHING ELSE.
CHANCE ALSO FOR BIG PROFIT.
SEE INDEX FOR FULL DESCRIPTION OR SEND FOR SPECIAL CATALOGUE.



OUR HOME ENTERTAINMENT OR EXHIBITION OUTFIT.
No. 6400. Our Home Entertainment or Exhibition outfit consists of the following pieces:
One graphophone talking machine and oak carrying case, one recording diaphragm, one automatic extra loud reproducing diaphragm, one speaking tube, one bottle of oil and one screw driver, complete..... \$25.00
12 Musical and Talking Records, your own selection..... 6.00
1 Hearing Tube for three persons..... 3.00
1 Small Horn for concert work..... 1.00
Price of outfit complete..... \$35.00

the old spaghetti factory

1050 Ala Moana Blvd. Honolulu, Hawaii

Dinners Include:

Crisp green salad, choice of French, 1000 Island, Blue cheese, or oil & vinegar dressing
Sour dough bread, garlic butter
Coffee, tea, milk or fruit punch Spumoni ice cream

Cafe

- Spaghetti with Rich Meat Sauce 3.45
(for purists—our recipe comes straight from Naples)
- Spaghetti with Clam Sauce 3.25
(plump baby clams in a white sauce—a favorite of Italian fishermen)
- Spaghetti with Mushroom Sauce 3.45
(terribly tender mushrooms, swimming in authentic Italian tomato sauce)
- Spaghetti with Tomato Sauce 2.95
(de e lightful)
- Spaghetti with Browned Butter and Mizithra Cheese, ala Homer 3.45
(a toothsome treat for cheese lovers)
(legend has it that Homer lived on this while composing the Iliad)
- The Manager's Favorite 3.65
(choice of any two of the above listed sauces)
- Pot Pourri — Spaghetti with a portion of Meat, Mushroom, Mizithra Cheese and Clam Sauces 3.65
(a sampler for the undecided—generous portions of our most popular sauces)
- Spaghetti and Meatballs with Tomato Sauce 3.95
(made from our own fresh ground steer beef)
- Zesty Sausage and Spaghetti with Meat Sauce 3.95
(try it, you'll like it)
- Slices of Tenderloin, with a side of Spaghetti 4.95
(tasty tidbits of tender, toothsome tenderloin with spaghetti)

Crisp Salad Bowl,
[choice of dressing]
Sour Dough Bread
1.35

Just a plate of Spaghetti
with Meat Sauce,
Sour Dough Bread
2.35

Puzgetti Dinner (for Kids under 12) 2.35
(with Meat or Tomato Sauce)

- | | | |
|----------------------|----------------------|----------------------|
| Mug of Coffee .. 35¢ | Hot Chocolate .. 35¢ | Coca-Cola 40¢ |
| Cold Milk 40¢ | Ice Tea 35¢ | Root Beer 40¢ |
| Hot Tea 35¢ | 7-Up 40¢ | Fruit Punch 35¢ |
| | Dish of Spumoni 45¢ | |

CALIFORNIA WINE BY THE DECANTER

ALMADÉN

Burgundy • Vin Rose • French Colombard

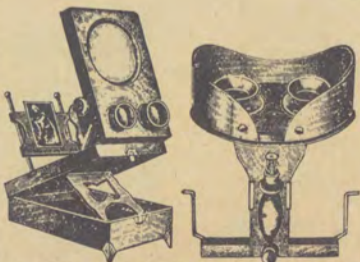
- Decanter for two 1.85
- Decanter for four 3.25
- By the glass .75

BEER ON TAP

- Olympia Light & Dark
- Glass65
- Pitcher 1.75



GUILIELMO MARRCONI
INVENTOR OF WIRELESS SPAGHETTI!



No. 62915. Stereo-Graphoscope, folding box style with ebonized finish, with 4 inch lens of fine quality for graphoscopic views, and two fine stereoscopic view lenses. Each..... \$4.75
No. 62916. Stereo-Graphoscope, folding box style, made of olive wood with 5 inch graphoscopic lenses of fine quality for viewing single pictures and two fine stereoscopic lenses, a very fine instrument. Each..... \$8.40

THE ZAR POCKET CAMERA.

No. 6500. The cheapest camera ever sold. Even though this little instrument is offered for less than \$1.00 it is a complete and practical working camera. The case is covered with black leatherette, which is a most excellent imitation of morocco. It has a good single lens and a very simple but practical shutter, which works equally well for instantaneous or time exposures. The instrument is extremely simple with nothing about it to get out of order. It takes a picture 2 1/2 inches on regular dry plates. The camera holds but one plate, but can be re-loaded either with a loading sleeve, a dark closet or any place from which the light is excluded. With each camera is included a half dozen regular dry plates and complete instructions for making, developing, printing and toning pictures. The camera measures 2 1/2 x 3 1/2 x 3 1/2. Price, complete..... \$5c



Tire Benders.

11625. The Champion Tire Bender. The frame is one solid piece; is double back geared, and worked with two cranks. The height of the tire is regulated by a screw; its bending capacity is 3 1/2 inches; it will take in the bend fifth wheels as well as tires. Price, each..... \$6.50



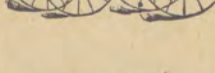
Sawing Machine.

No. 18061. This machine is sold at a low price and is an efficient and easy running implement, furnished with the very best Diston (Champion tooth) saw; has all the advantages of any hand power cross cut saw made; the uncomfortable bent position when sawing in the usual way is overcome and a natural upright position secured, enabling the full force and weight of the body to be thrown on the saw; weight, 44 lbs. Price, with one 5-foot saw..... \$7.50



The Columbus Buggy.

The Buggy with a world-wide fame. We sell it for..... \$39.90



Collar and Cuff Yourself AT HALF PRICE.

SEE OUR ELEGANT LINE OF NECKWEAR.

TAILOR MADE SUITS

FOR Ladies' and Gentlemen.

High Art. Latest Style Goods.

Made by the most expert tailors that money will employ.

Elegantly Trimmed, and the most Fashionable Cut.

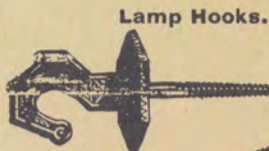
Any of these Ladies' Suits for \$4.50. See Dry Goods Department.

Either style Men's Suit in fine Clay Worsted, \$6.50. See page 160.

See how it pays to buy from the maker.

Our street-car

is an authentic car, similar to the venerable old trollies which once trundled through the streets of Honolulu



Lamp Hooks. No. 14296. Plate and Chandelier Hook. Length of screw, 3 inches. Price, each..... 47c
Per doz..... 4.70
Not made in solid bronze.

Semi-Circular Flower Stand.

No. 1132. 6 feet 8 inches high, 4 ft. long, 32 inches deep, weight 30 lbs.
Price each..... \$4.87
No. 1133. Stand same as above without the trellis, 3 ft. 8 inches high, weight 24 lbs.
Price each..... \$4.33



One of the Newest Designs for 1897.

A peculiarly handsome and decidedly striking pattern that will show off to wonderfully good effect in any home, whether rich or poor. It is, however, not made for ornament alone but for comfort and durability. It is decidedly well constructed of the very finest selected reed, close wove, seat embellished with handsome ornaments in the way of reed scrolls, balls, etc. The extra strong legs are cane wound and given great additional strength by means of cane wound cross pieces and braces.
9147 Our special price, each in natural finish..... \$6.50
9148 Our special price, each in shellac finish..... \$7.50

BE THE LEADER OF FASHION

In your neighborhood. Your neighbor need not know that you pay us only \$4.00. FOR A \$10.00 Hat. NO NEED TO TELL that you pay only \$4.75 for a complete and elegant \$10.00 TAILOR MADE SUIT... BUY FROM US AND KEEP IN STYLE. (You will also keep Half the Price Your Local Milliner and Dressmaker would ask you for Same Goods.)



The Louette.

No. 23471. The cut shows one of the loveliest creations of the season. A very pretty fancy straw hat trimmed full around front and on sides with gathered lace, wired wings of lace and two pretty bunches of wild flowers on right and left sides, ribbon finishing lace and flowers turned up in back and finished with two large rosettes of satin ribbon. This is a hat that is rarely seen in a retail store at less than \$3.50. Price..... \$1.00



79c for a Real Chelsea Cloth Blouse.

No. 21478. Boy's Extra High Grade Blouse; made from finest Chelsea cloth, a new fabric similar to fine French penang but heavier and closer woven and has very fine, soft, smooth finish. Made in beautiful light Cadet blue with neat white and black figures. Entirely new and stylish patterns. Made up in the very finest manner with large deep ruffled collar, double ruffled front and deep ruffled cuffs. Sizes, 4 to 12.
Price, each..... \$0.79
3 for..... 2.25

...BUY YOUR WIFE...

A Fashionable Wrapper.

It can be sent along, at no expense, with your harness, and she will be delighted. One of our elegant Wrappers will make your wife's winter wardrobe complete.

Collar and Cuff Yourself AT HALF PRICE.

SEE OUR ELEGANT LINE OF NECKWEAR.

TAILOR MADE SUITS

FOR Ladies' and Gentlemen.

High Art. Latest Style Goods.

Made by the most expert tailors that money will employ.

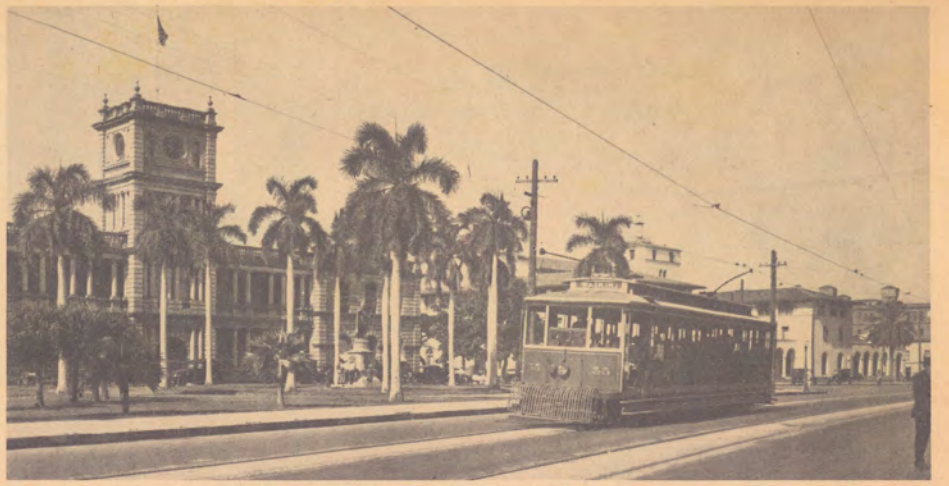
Elegantly Trimmed, and the most Fashionable Cut.

Any of these Ladies' Suits for \$4.50. See Dry Goods Department.

See how it pays to buy from the maker.



This "pa-u" rider, Adele Robinson, cousin of the Ward sisters, sits astride her flowered filly awaiting the start of the traditional Honolulu Floral Parade in 1910. The word pa-u means skirt and is part of the outfit of silks and satins that are featured by these riders even today.



Car 55 (circa late 1920's) is shown passing in front of the Federal Building on King Street.



The "Old Plantation" pond with its view of Punchbowl which was part of the original Ward Estate.



"Old Plantation" completed in 1880, the stately residence of Victoria Robinson and husband, Curtis Perry Ward, prominent kamaainas. This location across from Thomas Square is presently the site of the Neal Blaisdell Center Concert Hall. Many of these coconut trees still remain today.





Dedicated to satisfying dining in warm surroundings, The Old Spaghetti Factory is located in the Ward Warehouse on the corner of Ala Moana Boulevard and Ward Ave. The Kewalo Basin, just across the boulevard is part of a group of coral basins which, at the turn of the century, were man-made ponds for collecting sea water to harvest salt commercially. Today the Kewalo Basin is the center of tourist boat cruises which depart frequently for Pearl Harbor and other tours. Charter and commercial fishing boats sail out of Kewalo Basin as well. We hope your visit to The Old Spaghetti Factory is a gentle reminder of the grace and charm of days gone by.

