

Mihalanaau at Work

Hawaiian Values in Curriculum C4ward @
Kapi'olani Community College



[About Mihalanaau](#)

[About This Space](#)

[Goals/Outcomes](#)

[2012 Meeting Dates](#)

[Meeting Notes](#)

Miha People Portrait – Mark Kunimune

Posted on [April 1, 2012](#)



Aloha
kakou.
I am
Mark

FOLLOW BLOG VIA
EMAIL

Enter your email
address to follow this
blog and receive
notifications of new
posts by email.

Join 10 other followers

RECENT POSTS

- [Miha People Portrait – Mark Kunimune](#)

Kunimune of Kailua, O'ahu, Hawai'i. Born in Honolulu and raised in Kailua. I have two keiki, Noah and Jena, and one mo'opuna, Izabella. My wife, Susan, and I have been married for 23 years.

The ocean is my playground. Surfing and paddling are some of the activities I've played throughout my life. I lived in Denver, CO for the past 16 years and just about dried out. Luckily, I was able to tolerate swimming laps in a pool twice a week to meet my water craving.

Music is another form of therapy I practice. Until I lived on the mainland, I played occasionally. While living in Denver, I met up with some local boys and would play on a regular basis to quell our homesickness. Playing Hawaiian music on the inside while it's a blizzard outside was something to experience.

The Japanese side of me practices kyodo once a week up at a dojo in Kalihi Valley...it helps to keep me sane.

I don't have the koko (blood), but the Hawaiian culture has always been a part of my life. I'm kind of a banana with the inside being chocolate rather than vanilla.

Me ka ha'aha'a

Mark

Posted in [Miha People](#) | [Leave a reply](#)

March 9, 2012 Meeting Notes



Posted on [March 14, 2012](#)

Present: Ann Inoshita, Davin Kubota, Gail

- [March 9, 2012 Meeting Notes](#)
- [Miha People Portrait – Ann Inoshita](#)
- [Mihalanaau Meeting Tomorrow](#)
- [Miha People Portrait – Porscha dela Fuente](#)

RECENT COMMENTS



Mark Kunimune on [Bishop Museum Archives Ad...](#)



mihalanaauwork on [Is it Feb 7 ALREADY?](#)



Mark Kunimune on [Is it Feb 7 ALREADY?](#)



Gail Harada on [Is it Feb 7 ALREADY?](#)



Kawika N. Napoleon on [Is it Feb 7 ALREADY?](#)

BROWSE THE

ARCHIVES BY DATE

APRIL 2012

M	T	W	T	F	S	S
						1
2	3	4	5	6	7	8
9	10	11	12	13	14	15
16	17	18	19	20	21	22
23	24	25	26	27	28	29
30						
« Mar						

CATEGORIES

- [ACTION](#)



Harada, Maiana
Minahal, Mark
Kunimune, Porscha dela
Fuente,

- The group shared status on their projects.
- Recommended names for the Mihalanaau online repository is Kou 'Umeke – Your Calabash? Ka
□ Umeke – the calabash? Our calabash? Kō kākou 'umeke?
 - ACTION: Will check with Kumu Napoleon if this name is OK or if he has recommendations to extend the name.
- The online repository will be the focus of Mihalanaau poster for the May poster session.
- Suggested content of the repository:
 - Place based/culture based assignments (any and all disciplines)
 - Place projects that Miha members are working on this semester (SP2012)
 - Place projects posted as curriculum resources and inspiration
 - Mo□olelo and □Oli of this area
 - Relevant links
 - A page on Queen Kapi'olani
 - Pop-up Survey for assessment
 - Possible questions for the survey:
 - How did you find out about the site?
 - What are you looking for and did you find it at Kou □ Umeke?
 - How will use the information? Curriculum? Professional Development? Personal Interest?
 - Feedback
 - Kumu and Kupuna portrait/profile series –

Announcement

- Meeting Notes
- Miha People
- Talk-Story
- Uncategorized

LINKS

- Asia-Pacific Digital Library/ Kapi'olani Community College
- 'Iolani Palace
- Bishop Museum
- Center for Digital Storytelling
- Hawai'i History
- Hawai'i□s Plantation Village
- Historic Hawai'i Foundation
- **Historic Waikiki-**DownWind Productions
- Huapala Hawaiian Music and Hula Archives
- Native Hawaiian Education Council
- Native Plants Hawai'i
- Pacific Worlds
- Polynesian Voyaging Society
- Promise of Place
- Ulukau The Hawaiian Electronic Library
- **Waikiki Historic** Trail

Perhaps call the series Ka umeke kā'eo (a well-filled calabash or "a well-filled mind")

- Photos of place and images of culture
 - ACTION: Everyone, please go to [WordPress](#) and look at the templates. Choose a few for Kou Umeke. Email your choices to Lisa.

GET TO WORK

- [Register](#)
- [Log in](#)
- [Entries RSS](#)
- [Comments RSS](#)
- [WordPress.com](#)

NEXT MEETING = FRIDAY, March 23 11:00-12:30,
Manele 103

MAHALO!

Posted in [Meeting Notes](#), [Talk-Story](#) | [Leave a reply](#)

Miha People Portrait – Ann Inoshita



Posted on [March 9, 2012](#)

Born in Honolulu and raised in Waipahu, I always loved writing poems. I'm the author of poetry books and a short play, and I enjoy working with various schools to promote writing.

My passion for writing is paired with my interest in teaching; at KCC, I teach a variety of English classes including English 22, English 100, creative writing, and business/managerial writing.



When I'm not writing or teaching, I unwind with relaxing family meals, shopping, watching movies and TV.

Posted in [Miha People](#) | [Leave a reply](#)

Mihalanaau Meeting Tomorrow



Posted on [March 8, 2012](#)

Aloha mai kakou!

Mihalanaau Meeting

Friday, March 9 2012

11-12:30

Manele 103

Check out Pics from our last meeting at the State Archives.



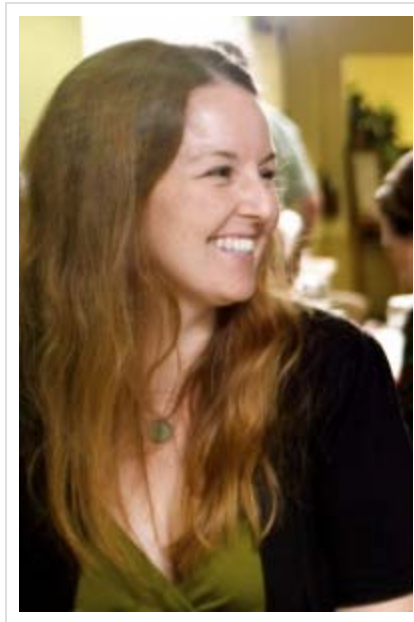
Posted in [Announcement](#) | [Leave a reply](#)

Miha People Portrait – Porscha dela Fuente



Posted on [February 21, 2012](#)

I was born and raised for the most part in Kapahulu and love the east side of Oahu. It is home. From jumping off of Walls in Waikiki, bumming around horse stables in Waimanalo, to swimming in the bluest of blue water in Ka'a'awa, some of my fondest memories are in these places.



Cooking and movies are my escape, my therapy. They are even better in tandem. I love to travel and dream of visiting all of those places that appear in glossy travel magazines. Anything zombie is cool in my book. Trust me, it's an interesting fad of pop culture.

For now I am a writing instructor, juggling the demands of the classroom and my role as an educator. I push my students to rise to the occasion and even see glimpses of promise. This is what keeps me going.

Posted in [Miha People](#) | [Leave a reply](#)

Miha People Portrait – Krystalynn Ontai



Posted on [February 12, 2012](#)



By
day,
I'm an

instructor. I teach basic composition and creative writing.

My students are not unlike me: sometimes they are calm and collected, sometimes they are responsible and forthright, and sometimes they just need a kick in the pants to get moving. I grade, I discipline, I empathize, I discuss, and I try to engage people M-F (and some Saturdays) during the working hours of 9-5.

Off-duty, I dream of writing screenplays while grading papers, completing homework assignments for grad. school, and/or reading/prepping for area exams (that are sure to be the end of me). I love the dive bar scene for lack of pretense. I love to BBQ because that means food, friends, and the real me gets some play time. I love punk/rock, r&b, opera and classical music, but little in between. Once a week, I trade in a pen for soccer cleats and spend 90 minutes chasing a ball around. The simplicity is cathartic.

Mahalo Krystal. Everyone else, [read this post](#) and get on it.

Posted in [Miha People](#) | [Leave a reply](#)

The Library of Congress – Chronicling America Project



Posted on [February 12, 2012](#)

Here's something you might be interested in for the mo'olelo project. Genie Alvarado, Hawaiian Resources Specialist at Lama sent out the following announcement.

Hamilton Librarians Dore Minatodani and Ernest Anip will be presenting an information session on the Library of Congress's Chronicling America project. Evidently, UH Mānoa Library has participated in Chronicling America since 2008 and have been awarded two grants to fund the digitization of Hawaii English-language newspapers published since 1920.

Presentation scheduled for:

Friday, March 9, 2012

2:00 p.m. – 5:30 p.m.

KCC Library, Lama 116

Presentation will focus on:

- 1) Use of Chronicling America in research by students and faculty
- 2) Technical aspects of digitizing newspapers for the Library of Congress.

Here are links to the work UH has done as part of this project:

[Chronicling America Images](#) Displays selected images from advertisements in Hawai'i newspapers. (lots of Primo Beer ads!)

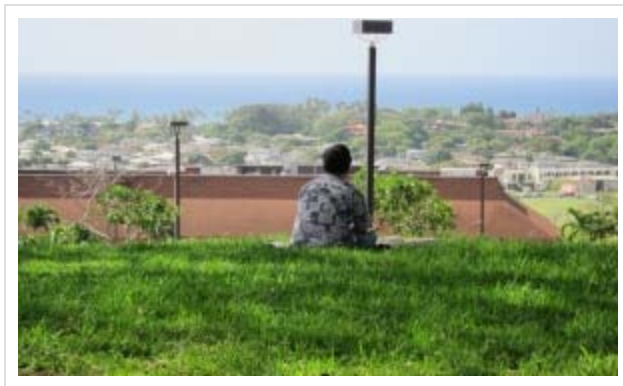
[Hawai'i Digital Newspaper Project](#)

Posted in [Announcement](#) | [Leave a reply](#)

Bishop Museum Archives Adventure



Posted on [February 11, 2012](#)



The sun was out, the wind was up, and Kā'lwī Channel, showing off all those white caps, was in the mood for a huaka'i*. We met at Mānele Building as planned and although we were informed that the Bishop Museum Archives would be closing its doors as of March 1, at least twelve Mihalanaau members showed up anyway with that supportive, cohesive vibe that Mihalanaau meetings generate. When it was time to leave Mānele for Kalihi, several members sadly admitted that they would not be able to leave campus because of commitments they had already made for the afternoon — meetings, committee work. They wished us well with hugs and

laughter. Someone mentioned the moment felt like an official “send-off” for a safe journey, so mahalo to those members who could not go to the archives but who showed-up to meet and then send off those members who could go.

(*huakaꞑi – trip, voyage, journey, mission, procession, parade; to travel)



Naturally, the adventure began with food. We stopped for a quick lunch at the Bishop Museum cafe and talked about the following:

- I shared what was said in a C4ward concierge meeting I had attended earlier that morning. One of the comments — Mihalanaau manages to break-ground with unique ways of doing things (i.e. conceptual “poster”, the archives visits, the interactive poster session in December).
- Our moꞑolelo projects are so diverse – chant, place history, land use, legendary stories, etc. Some of us will need to discover our focus as we peruse, while others have a definite idea of what they will do.
- Moꞑolelo projects DO NOT have to begin with an archive visit. No worries if you cannot make these visits.
- Moꞑolelo projects ARE NOT limited to Waikīkī, Kapahulu, Waiꞑalae or Kaimuki. Go where you like with this project. You choose the place.

- The shoyu chicken plate at the cafe was pretty ono. Everything was pretty ono.

Once inside the archives, we were given an orientation, and then we basically went to work. The staff at the archives were so accommodating and NICE. There was even a teary reunion with a former KCC student working on her PhD dissertation and her former KCC English professor, Gail Harada. That student, by the way, offered to send us her ENG 100 place-based/culture-based syllabus for inspiration when she found out what we were doing. Translation: Making connections with community who share similar values.

Great day. Time well spent.

And dear Porscha, MAHALO for contacting the archives about our visit. The staff treated us so well.

Need inspiration for your mo'olelo project? Go to the Bishop Museum website and check out "[What's On.](#)"

Next field trip: FRIDAY, Feb 24 State Archives. Kāwika volunteered to inform the archives of our planned visit. More info on the when, where and what coming soon.

Posted in [Talk-Story](#) | [1 Reply](#)

Mihalanaau Portraits



Posted on [February 11, 2012](#)

HC here (humble concierge), and I would like to try something new. I would like to post on our blog member profiles with images. Come on now, don't be shy. Here is my request:

- 1) Email me a photo of yourself or an image you feel best represents who you are.

2) Along with that photo, write a short (200 words?) bio or your professional and personal (if you like) interests. Maybe you could send a teaching philosophy or a goal or a passion. No need be shame.

3) I'll post these profiles and photos on our blog.

Why oh why would I even suggest such a thing? A few years ago, I was in Kona visiting friends. We went to a luxury hotel to meet a few more friends at a restaurant. There was a trio of Hawaiian men performing for a room of tourists, who seemed to thoroughly enjoy the musical talent of these three musicians. My friend told me that the lead singer was "ABD" — PhD in Anthropology, the bass player was a composition/literature professor and the guitarist was a Hawaiian language professor. I remember thinking that the audience had absolutely no notion of the accomplishments those three musicians possessed which makes sense because I doubt someone sitting in the audience would yell, "wassup with the dissertation?" The point is those three men were so much more than what they appeared to be. All of us are more than what we appear to be.

Along the same lines, I work with all of you, so I know you are smart, compassionate, generous spirits, and I basically know what department you "belong" to, but when I find out that you have written screenplays, traveled through Polynesia, presented your work at conferences, participated in art shows, volunteered at elementary school writing programs, won teaching awards, worked in film, speak several languages, expressed the insane desire to change the world, I want to know more about you. The other you. The you that you keep to yourself because . . . nobody asked. And I bet the rest of us want to know about you too.

So how about it? Want to try this?

Send me something soon.

lkanae@hawaii.edu

Posted in [ACTION](#), [Announcement](#), [Talk-Story](#) | [Leave a reply](#)

Is it Feb 7 ALREADY?



Posted on [February 8, 2012](#)

Aloha Mihalanaau C4ward members,

Friday, 2/10 is our big field trip to the [Bishop Museum Archives](#) to begin our place projects. The archives open at noon, but a few of you have made the suggestion to get there earlier, which would mean contacting the archives. Give me another day to see if this is possible, and I will let you know ASAP.

In the meantime . . . anyone up to a brown bag picnic — quick kine — before heading into the archives? I know. It depends, yeah?

If we cannot get into the archives before noon, maybe we can meet at 11:00 for a [sandwich or a musubi](#).

If we can get into the archives before noon, maybe we can meet at around 10:00 for [coffee and mid-morning quick kine grab one snacky-snack](#).

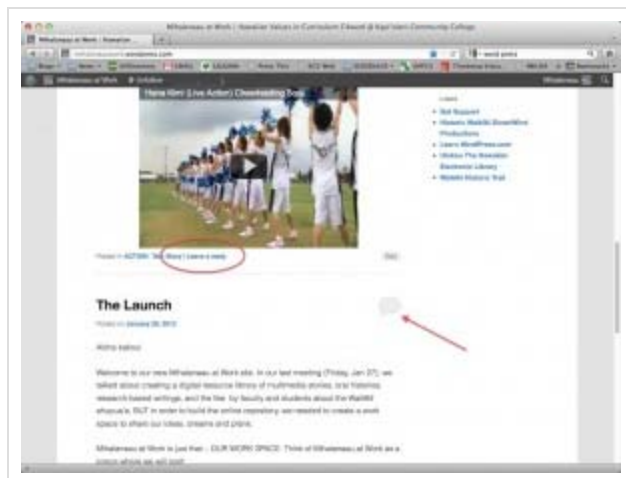
Let's see how our schedule unfolds.

In the meantime, meantime . . .

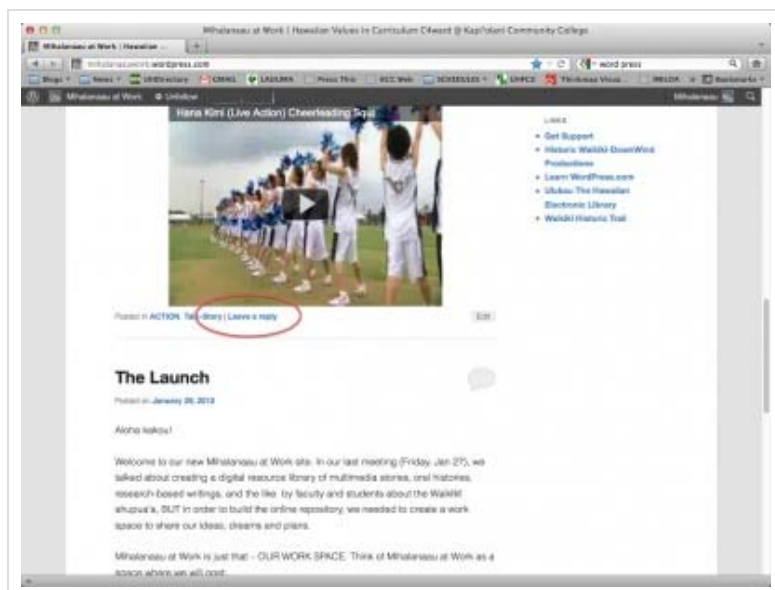
Think about what might be the focus of your research on place — story? legend? stream? person? mountain ridge? tree? plant? rain? wind? There are so many possibilities! Share please!

3 easy ways to share your ideas.

1. Click on the QUOTE BUBBLE on the right side of the post title. (red arrow)



2. Go to the bottom of this post and click LEAVE A REPLY and share your thoughts. Here is an image of what the LEAVE A REPLY looks like and where you can find it.



3. Find the WHAT DO YOU THINK box.



Posted in [Uncategorized](#) | [6 Replies](#)

[Load more posts](#)

FROM "OWAI NEI KAMA HOU?"

"Ke hoes aku nei i mua o oukou me na manao mihalanaau o keia pae aina nani" We have arrived before you with current moving thoughts of this beautiful island chain. (published in KE KO'O o HAWAI'I, August 15, 1983)



Theme: Twenty Eleven  Blog at WordPress.com.

[Follow](#)

Follow "Mihalanaau at Work"

Get every new post delivered to your Inbox.

Powered by [WordPress.com](#)

