



Burglary in Hawaii

Monte Keawe-Costa
University of Hawaii West Oahu



Abstract

The purpose of my exploratory research study is to identify the “actual” causes and the perceived causes of burglaries in Hawaii and then to find ways to prevent burglaries. The procedures I used in this research study included: surveys from Hawaii residents to understand the perceived causes of burglaries and to identify what residents believe will prevent burglaries, statistical information gathered from the Honolulu Police Department to understand if geographic location plays a role in the presence of burglaries, and a one-on-one interview with a Keith Lima, a retired Burglary-Theft Detail Lieutenant in the Pearl City District.

Introduction & Research Question

Introduction

Burglary in Hawaii isn't looked at as a “big problem” here because it doesn't show up to often in the media and as often as other issues, but burglary is a problem, a particularly big one considering there are material and financial losses associated with burglaries. In 2016, there were 3,771 burglaries on Oahu alone, this number alone states that burglary is prevalent here and it needs to be addressed.

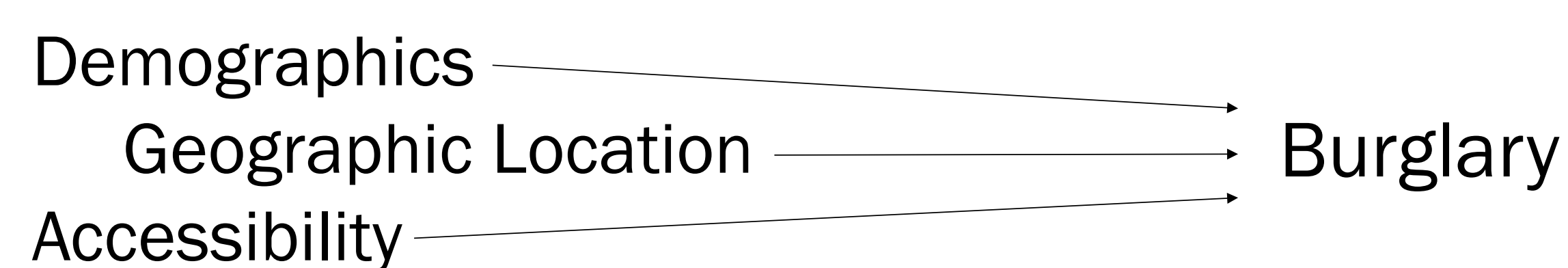
Research Question

How can Hawaii residents prevent burglaries from occurring to their homes?

Hypothesis

By installing home security systems, having good, strong relationships with neighbors, and keeping your inaccessible will help prevent burglaries.

Independent & Dependent Variables

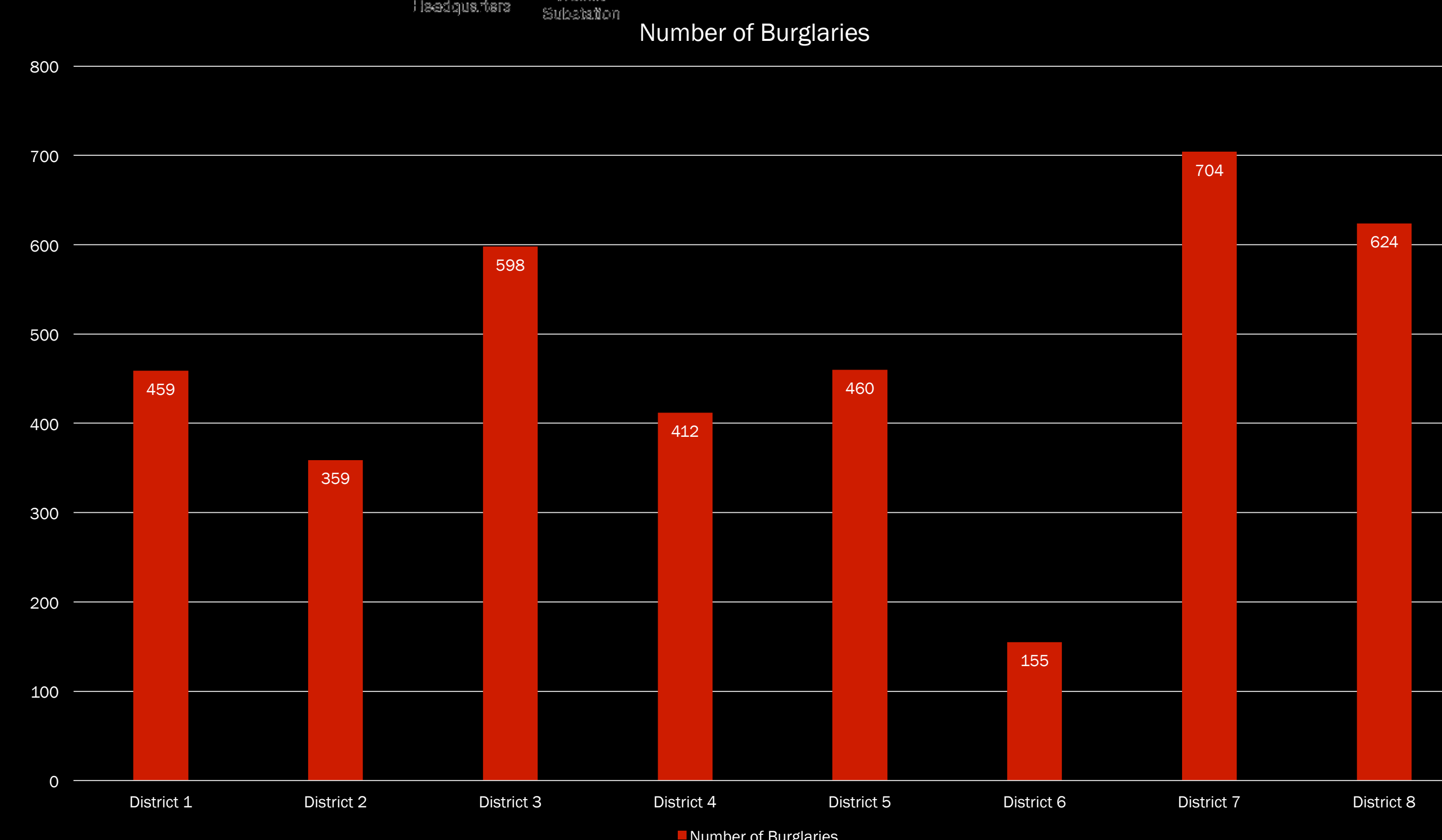
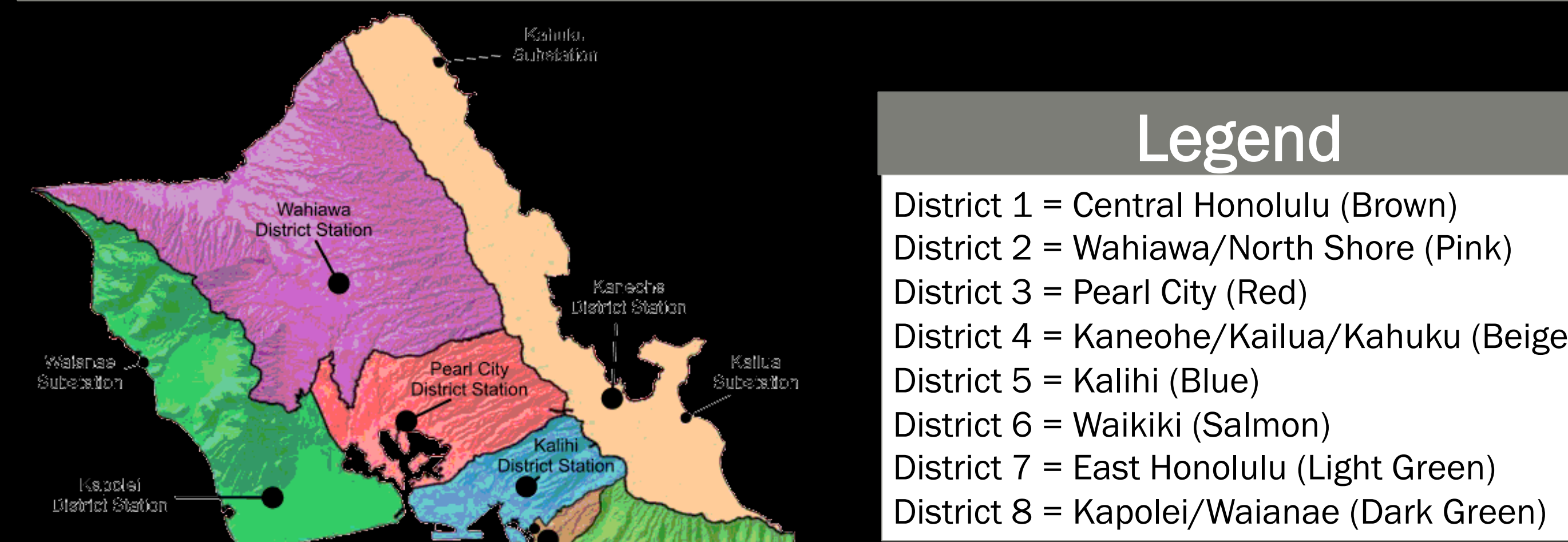


Research Design & Data Collection

Quantitative and qualitative data were collected from surveys with informed consent given to Hawaii residents that attended University of Hawaii West Oahu to understand perceived causes & prevention methods. Also, a one-on-one interview with Keith Lima, a retired Honolulu Police Department officer, was given to understand another perception of prevention methods. Quantitative crime data and statistics published by the Honolulu Police Department were also analyzed in this research project.

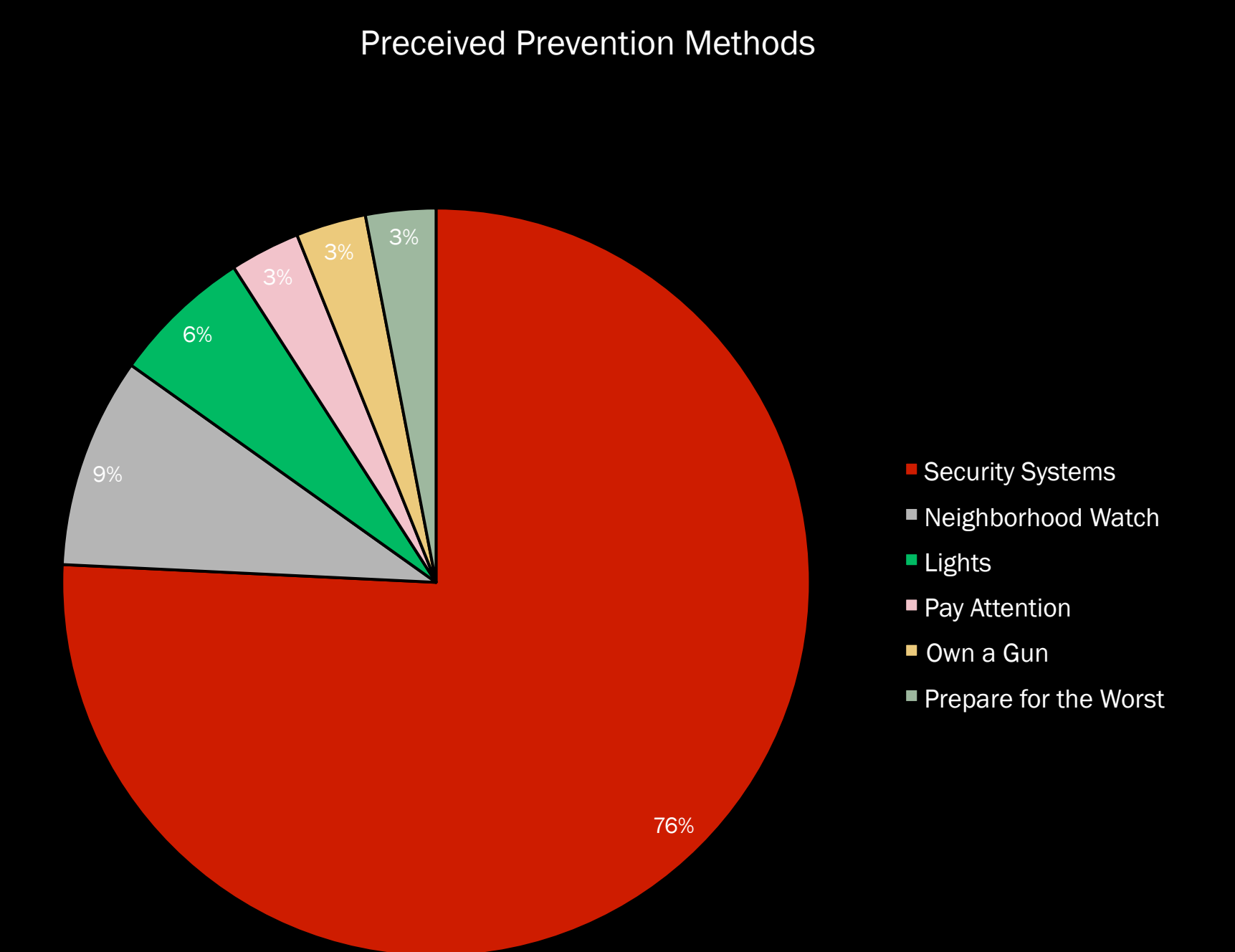
What is ‘burglary’?

For purposes of this research project, ‘burglary’ is defined as the unlawful entry into a home or building purposely with the intent to commit a crime against a person or property (Haw. Rev. Stat. §708-810)



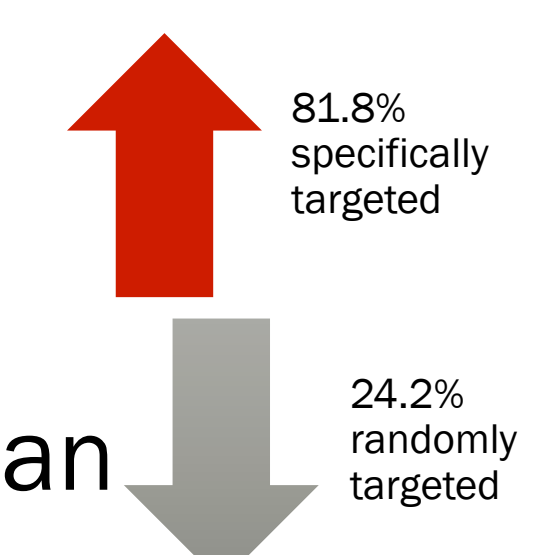
Prevention

The best perceived prevention methods are depicted in the graph on the right. Based on what Officer Lima presented, there are many good prevention methods, which include those listed.



Results

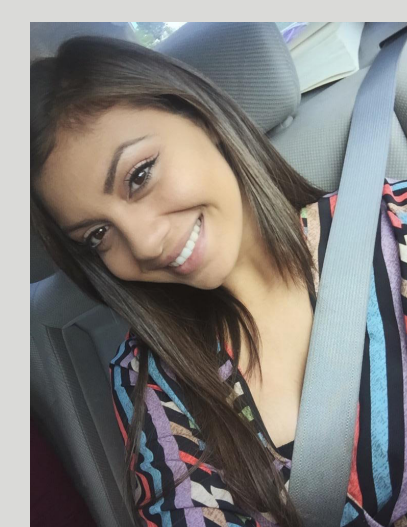
I concluded that it is perceived, by Hawaii residents, that burglars specifically target homes. Based on research, I concluded that the “actual” causes of burglaries cannot be determined because of the many contributing factors. The most effective perceived prevention methods by both Hawaii residents & a retired HPD officer are security systems, neighborhood watch/relationships. Prevention methods are limitless, but having a good security system, being alert & involved & having a strong relationship with neighbors can prevent burglaries from occurring.



Conclusion

It is perceived that burglars specifically target homes they burglarize by residents & the best way to prevent them is by installing security systems. The “actual” causes of burglary are inconclusive, but tend to be more frequent in districts that have more residential homes. Based on research, I can conclude that depending on who the burglar is depicts where he/she targets. This leads me to a new theory that geographic location, accessibility & risk/reward are determining factors of burglary targets. Lastly, don't depend solely on HPD because their resources are scarce. Take action, be aware, don't be a victim.

Contact



Monte Keawe-Costa
University of Hawaii West Oahu
Email: montekc@hawaii.edu
Phone: (808) 489-7311

References

- Bennett, T. (1995). Identifying, Explaining, and Targeting Burglary 'Hot Spots'. *European Journal Criminal Policy and Research*, 3(3), 113-123.
- Groff, E.R. & La Vigne, N.G. (2001). Mapping an Opportunity Surface of Residential Burglary. *Journal of Research in Crime and Delinquency*, 38(3), 257-278.
- Honolulu Police Department. (2018).
- Lima, K. (2018).
- Polvi, N., Looman, T., Humphries, C., & Pease, K. (1991). The Time Course of Repeat Burglary Victimization. *Brit. J. Criminal*, 31(4), 411-414. doi: 10.1.1.874.7722
- Shover, N. (1973). The Social Organization of Burglary. *Social Problems*, 20(4), 499-514.
- Winchester, S. & Jackson, H. (1982). Residential Burglary: the limits of prevention. *Home Office Research and Planning Unit*, 74, 1-3. doi: 10.1.1.511.5212