

EWA HURRI-CANE

VOLUME XVI

Ewa, Hawaii, February 26, 1965

NUMBER 9

Hawaii Sugar Faces Sour Year

Although Hawaii's 1964 sugar production hit an all-time high, a number of factors have created a potentially dangerous situation for the industry during 1965. We understand that this was a key factor that influenced the one year agreement between the industry and I.L.W.U.

A review of the situation shows:

1. The Congress last year was unable to enact new sugar legislation because the beet areas demanded an increase on top of their already high quota. They also refused to go along with the recommendations of the rest of the domestic sugar industry for equitable changes.
2. The world production trend is up. The 1964-'65 estimated world production is expected to exceed the '63-'64 figure by 7 million tons. But the world consumption is expected to increase by only 3 million tons - a 4 million ton surplus!

3. The domestic beet industry produced record crops in 1963 and again in 1964. Although acreage is now restricted the total over-crop production at the end of the 1965 crop is estimated at about 1,330,000 tons.

4. Beet production alone in the 11 western states is 1.6 times the demand. Adding Hawaii's and Philippine's sugar to be sold in this area, the supply is double the demand. The C & H refinery must compete with 46 beet factories. C & H is handicapped to begin with because of the annual ocean freight bill of more than \$5,000,000, something the beet producers do not have.

5. Manufacturers of artificial sweeteners produced the equivalent of 270,000 tons of sugar in 1963. In 1964 their production rose to equal 360,000 tons. By 1968 their sales are expected to equal 750,000 tons of sugar.

Production News

Week Ending	To
2/20/65	Date
Tons Sugar	1,534
Shipped	3,527
Acres Harvested	135
Tons Net Cane	13,308
Tons Cane Per	
Ton Sugar	9.06

Plantation Duty Roster

February 22, 1965
 W. Worden
 March 1, 1965
 W. McCleery

6. Sugar brings into Hawaii's economy about \$150,000,000 each year, with an average payroll of \$58,000,000.
7. Hawaii's record 1964 crop actually returned less money than 1963 because of a sharp drop in price. Prospects for 1965 are not at all bright, because of the factors outlined above. Industry needs and must effect - first, lower production costs; second, Congressional legislation favorable to sugar; third, understanding and support by our state legislature; and fourth, greater consumer acceptance which will mean an increase in the amount of sugar sold.

1964 Tax Returns Kokua Offered

The Plantation's Accounting Department will again help Ewa employees in preparing their annual tax returns. The Main Office will be open from 7:30-11:00 A.M. on Saturday, March 20 for this purpose.

Employees should bring their forms W-2 (tax withholding statement) and other necessary tax forms.

Transfers and Promotions

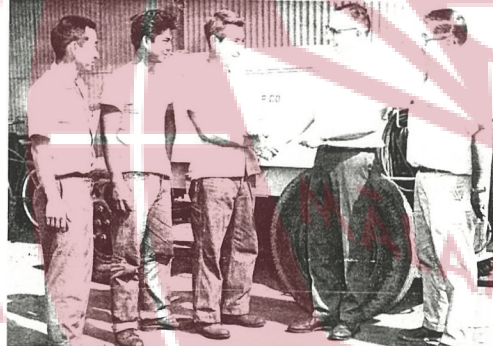
RUPERTO BASILIO, Painter Journeyman, Tr. (8) to Painter Journeyman (9).
 JIMOKU BISE, Machinist Tr. (5) to Machinist Journeyman Tr. (6).
 KENZO SAKAZUMI, Plumber Journeyman Tr. (8) to Plumber Journeyman Tr. (9).
 YOSHIO SHIMIZU, Painter Trainee (5) to Painter Journeyman Tr. (6).
 ROBERT TAKAMOTO, Factory Mechanic Journeyman Tr. (7) to Factory Mechanic Journeyman Tr. (8).
 SHOICHI YAMAGISHI, Carpenter Journeyman Tr. (7) to Carpenter Journeyman Tr. (8).
 PEPITO PASCUA, I.C.E. Mechanic Tr. IV (4) to I.C.E. Mechanic Tr. V (5).
 DUKE NAKASATO, Records Clerk-Distributor-Station Operator to Materials Control Clerk Tr. "B".

"Trades" Home Study Course Grads

Pictured here are trades trainees "Pete" Pascua and Tony Bise being congratulated by their supervisors for being the "firsts" to complete the related training phase (book learnin') of the Trades Progression Program.

Pete, an I.C.E. Mechanic Trainee, entered the program in February, 1964. He had however begun studying the Commercial Trades Institute course in January, 1963.

Tony completed the machinist's course offered by International Correspondence School. He has been training as a Machinist since October, 1962.

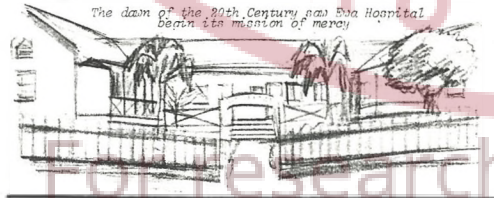


Left to right: Jerry Hishinuma, Shop Relief Foreman, "Pete" Pascua, Tony Bise, Bill Worden, I.E. & Maintenance Superintendent and Mits Fujita, Special Projects Supervisor.

1890 ECHOES FROM EWA'S PAST 1965

The elder Benton's far-sighted emphasis of sound employee relations was certainly an important contribution to Ewa and the community as any of his technical contributions. His ambitions are well expressed in the following passage from his annual report for 1890 - "...each cottage and garden, however humble, will become a center towards which its members will look with attachment. The houses of the workers represent homes with families for the present well-being of the workman and the future well-being of the plantation."

Construction of houses was stepped up. The Ewa Kindergarten began three years before, was expanded to take care of the growing number of plantation children. And in that same year Manager Benton reported, "...a free hospital capable of accommodating 30 patients, has been erected, being in immediate charge of the resident physician and three assistants. Owing to better food and care, it certainly saved 12% and caused more rapid recovery in ordinary ailments."



The dawn of the 20th Century saw Ewa Hospital begin its mission of mercy.

PAGE 2

EWA HURRI-CANE

February 26, 1965



Your Safety

Too often a wandering mind ends its journey in Accidentville. That's where inattention finds a junction with circumstances. The result can be pain and injury—even death.

There are very few things that you can do well without concentrating on the job. And there are even fewer things that can be done SAFELY without concentrating.

That's why it's so important to "Keep your mind on the job."
If you do that, you'll do a better job. But most important, you'll do it with less risk.

Your careful attention to the job at hand—at work, driving your car, in your home or at play—will help eliminate accidents. That's a job worth keeping your mind on also.

--National Safety Council

Welcome Additions to Ewa's Youth Club Family

Spearheaded by the Ewa School P.T.A., two 4-H Clubs were recently organized among Ewa students. Being brand new, neither club has had the chance as yet to name themselves.

The girls' group which has 35 members, is led by Mrs. Gladys Espeneve of Honolulu. They will meet at 10:00 A.M. on Saturdays at the Ewa gym clubroom.

The Boys' group, 18 members strong, will have Liborio Ramelb, an Ewa School teacher, as their leader. Time and place of their regular meetings are yet to be decided.



Seated in above photo are officers of the girls' club, left to right: Rossinda Lucena, President; Gail Oniya, Vice President; Frances Estaniqui, Secretary; Irene Kamikawa, Treasurer; Lorene Hasebe, Reporter; and Amie Nihipali, Sgt.-At-Arms. Standing are the officers of the boys' club, left to right: Harold Hatch, Jr., President; Craig Takiuchi, Vice President; Lloyd Yamachi, Secretary; Christine Dumlaog, Jr., Treasurer; and Clayton Isobe, Sgt.-At-Arms.

The Ewa 4-H Advisory Council makes this appeal: The 4-H movement once flourished in our community, and there were five boys and girls' clubs active in this program founded on the promotion of citizenship, leadership, fellowship and scholarship. But this very worthwhile program suffered a tragic setback at Ewa due chiefly to the fact that too many people were too busy to lend the youngsters a helping and guiding hand.

Now that an interest in this program has been reawakened among the community's youngsters, it behooves Ewa's citizenry to fan this spark into a bonfire of gainful activities which would direct the boys and girls toward a life steeped in the proud American heritage.

Those who wish to know more about the 4-H program or may be able to help in some way, may contact the members of the Advisory Council - Mrs. Gladys Espeneve, Mrs. Thelma Oniya, Mrs. Margaret Glipa, Charles Nakamatsu, Stanley Tamashiro, or Charles Tanaka.

Ewa's Oldtimer

The plantation salutes KUNITSUGU KAMEOKA as the "old timer" of the week with a service record of 30 years and 5 months.

Born and raised in this community, he started working for the plantation in September, 1934 after completing Ewa School. He performed a variety of field jobs for 1 1/2 years before transferring to the Construction Department as a Carpenter Helper.

Kunitsugu received his carpentry certificate from the Ewa Apprentice School in March, 1934. Three months later he was promoted to Carpenter Journeyman, a position he held until 1958 when he became a Low Grade Centrifugal Operator. He returned to the Construction Department as a Journeyman Carpenter in September, 1963 when the need for more carpenters was announced.

Kunitsugu was an outfielder with the Hul-Kanes baseball team which won the Jr. A.J.A. championship in 1938.

Mr. and Mrs. Kameoka have three children: Donna, a Freshman at Campbell High School; Keith, and Ray, students at Ewa School. The Kameokas reside in Fernandez Village.



which won the Jr. A.J.A. championship in 1938.

Who's New

Congratulations to Mr. and Mrs. Buenaventura Micus, who welcomed the arrival of a son, on February 17, at the Ewa Hospital. They named him Edgar Dean.

Republican Club Meeting

A meeting of the Ewa Republican Precinct Club will be held on Wednesday, March 3, at the Ewa School auditorium at 7:15 P.M.

The program will include election of officers for 1965-'66.

Mr. Fred Bennion of the Hawaii Tax Foundation will speak on the new tax proposal—a topic that should interest all tax payers.

Refreshments will be served and door prizes given away. The public is cordially invited.

Credit Union

Worried about your taxes? Then see your Credit Union and take advantage of the services available.

The Credit Union is owned by its members and exists solely to serve the needs of its memberships.

Attention!!!

Fernandez Villagers

All Fernandez Villagers are invited to attend a general meeting tonight at 7:00 P.M. at their clubhouse.

Boys and girls interested in playing volleyball and softball, please report to Stephen Glipa at 6:30 P.M. tonight at Fernandez Village ball park.

J.C.C. Meeting Called

Two meetings of the Ewa Beach Junior Chamber of Commerce will be held at the Ewa gym on March 1 and 15 from 7:00-9:00 P.M. All men between the ages of 21 and 35 who are interested, are cordially invited to attend.

Purpose of the J.C.C. is to help individuals develop leadership and improve themselves to meet community problems.

I.L.W.U. Softball

Ewa rebounded with a 14-4 rout of Calpac last Sunday at Tenney Ball Park to even its record at 1 win and 1 loss.

Dick Itamoto pitched a steady game to gain credit for the win.

Ewa plays the undefeated Johnston and Buscher outfit this Sunday at Tenney Ball Park at 10:00 A.M.

For reprint, distribution, or display.