

NOTICE OF HOUSE VACANCIES

For E.P.Co. Employees Only

Filipino Vill. 77	\$10.00
Filipino Vill. 117	13.25
Filipino Vill. 155	10.50

Apply before 4 p.m., 1-7-53



VOLUME IV

Ewa, Hawaii, January 2, 1953

NUMBER 1

ALIEN ADDRESS REPORT

JANUARY 1 TO JANUARY 31, 1953

WHO MUST REPORT

If you are not a citizen of the United States of America and you are in this country on January 1, 1953, you must submit an address report.

REQUIREMENTS

Every alien who is within the United States on the 1st day of January of each year shall, within 30 days following such date report his address to the Commissioner, Immigration and Naturalization Service, and shall furnish such additional information as may be required by regulations. Any alien who is temporarily absent from the United States during the reporting period shall report his address within 10 days after his return to the United States.

DEPORTATION IS A PENALTY FOR FAILURE TO REPORT

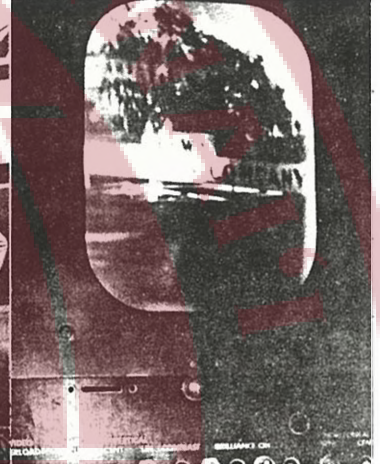
HOW TO REPORT

1. Go to any United States Post Office or any U. S. Immigration and Naturalization Office and ask for an Annual Address Report Form I-53.
2. Read the instructions on back of the card before you do anything else.
3. Turn card over and answer all eight (8) items in spaces to right of the arrows. Use typewriter, ink, or indelible pencil.
4. After you have completely filled in all spaces, check back over card to be sure you have not forgotten anything.
5. Write your signature and the date at the bottom of the card.
6. Take the completed card to any United States Post Office or Immigration and Naturalization Office and hand it to a clerk. Do not mail this card yourself.



A BIG WELCOME greeted our TV equipment. Frank Wiley, Factory Superintendent, Sonny Sanehira, our purchasing expiditer and Mr. Harry Simms of the Hawaiian Equipment Company were among those on hand. Our TV arrived direct from the manufacturer by air freight Wednesday noon. At 3 p.m. it

was operating in the plantation office. The Hurri-Cane was on hand to take a picture of the first picture (right). Note Mr. Wiley behind the sign—he doesn't really have two heads. One spot (right) is a reflection from Carl Hermanson's house.



Group Retiring Serves 194 Years

For some of our friends, the new year means a new milestone in life.

Six oldtimers retired at the beginning of the year after completing 194 years of service. The oldest in point of service had put in 46 years of working at Ewa.

They are Toshiro Kaitsu, blacksmith, whose career at Ewa started in May, 1906; Yoshitaro

Sakurai, irrigation foreman, who began in June, 1907; Eusebio Barcelo, sugar room crewman, October, 1921; Pedro Tolentino, ground crewman, September, 1922; Gosaburo Sueda, janitor, November, 1922; and Fukuji Uyeda, gardener, February, 1942.

The Hurri-Cane extends the best wishes and aloha from their friends and the staff of Ewa Plantation for a job well done.



OLDTIMERS WHO RETIRED at the end of last year began reminiscing while thumbing through an Ewa Plantation album. They are, to right above, Pedro Tolentino, Fukuji Uyeda, Toshiro Kaitsu, Yoshitaro Sakurai and Gosaburo Sueda. Eusebio Barcelo, who was not present when the picture was taken, is shown in the inset photo.

TV COMES TO RURAL OAHU

IT'S HERE!

Ewa ended 1952 with its own TV system. Wednesday, December 21 all the equipment arrived at Honolulu airport by PanAmerican. Within hours local TV experts had the station in operation. Rural Oahu's first TV station was first—the picture wasn't too bad either.

Mr. Akira Honke came all the way from Waialua to help set things up. It's rumored that Waialua too may enter TV. If so, Mr. Honke's valuable Ewa experience will come in handy.

This payday Ewa folks can see themselves on TV. The set won't be needed in the mill for a week or two, so it will be on display at the office. You can be your own live show.

When the mill starts up the TV will be part of the cleaning plant. It will help the operator by letting him see the carrier which is out of sight from his control tower.

Thanks

Isamu Tsurumaki had his television set by his bed the day before Christmas. He enjoyed the first programs on Christmas Eve.

Isamu thinks it's a mighty fine present for a person who is bedridden. He wants us to thank everyone who helped bring him this happiness.

No Rain; Signal Unchanged

No Shutdowns in '52

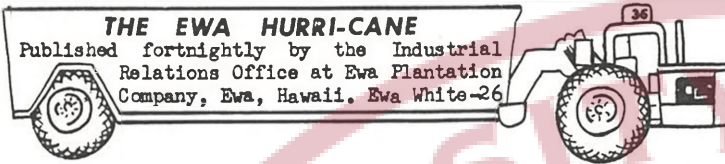
The weatherman was good to us in 1952. We had no shutdowns due to rain. In fact, we haven't had a shutdown from rain since October 31, 1951.

Whistle Signal Still Used

Manager Jim Orrick gave the company's policy on whistle signals in a letter to the union last week. He said that, as agreed to by the union committee with whom this and several other matters were discussed in October, the present system of notification of employees when no work is to be offered will remain in effect, unless a better one is devised. When it is decided before quitting time that work on the next day will not be possible, two blasts on the mill siren will be sounded at quitting time and again at 8 p.m.

When the decision is made after quitting time, but before 8 p.m., two blasts will be sounded at 8 p.m. and again two hours before the scheduled starting time of the regular day shift.

This is in accord with the practice originally requested by past union officers.



THE EWA HURRI-CANE
Published fortnightly by the Industrial
Relations Office at Ewa Plantation
Company, Ewa, Hawaii. Ewa White-26

THE EWA WAY

We have come through a fine year. In 1952 Ewa made a lot of progress in new fields and kept up "Ewa no ka oi" in all our work.

From time to time we talk about teamwork and the Ewa team. It isn't talk--it's fact.

Through the year, our fields were freer of weeds than ever before. Years ago weeds were a problem for men with hoes. In 1952 many groups had a part in keeping weeds under control. Added to the hoe crews we have herbicide sprayers. Our new herbicide depot was built by steelworkers, construction men, plumbers, draftsmen and painters. The warehouse keeps a supply of herbicide on hand. The hospital and safety departments have provided new means of protection. All these people have helped keep weeds down. They've helped the sprayers, truck drivers and all the cultivation team do a better job.

This story is only one of hundreds. Every plantation operation is the product of teamwork. And another form of teamwork has played a big part in making 1952 a really fine year: Every labor-management problem about Ewa's operations was worked out without work stoppage, strike or lockout. We negotiated contract changes, a wage increase and settled lots of small problems. We did this by putting our cards on the table and coming to mutually acceptable decisions. This friendly and honest give and take is teamwork.

Working together, we have done a lot towards providing security and happiness for ourselves and our families.

Resolutions for Proud Parents

The new year is the time to plan ahead. Here are some resolutions that will protect your children. An accident would spoil your "Happy New Year."

Teach the kids street safety. If there's a sidewalk, that's the place to go--not out on the road. When there is no sidewalk the safe way to walk is facing the traffic. This is the left side of the street.

Teach them how to cross a street. It's easy--stop, look both ways and don't try to beat the cars.

Guns are always dangerous. They are not toys. They should never be played with. Pellet guns, BB guns, rifles and pistols are all dangerous weapons. Shooting birds in our villages is against the law. In fact, no hunting is allowed on any Ewa Plantation lands. Mom and Dad, no gun is a play thing for junior. Also, remember the sling shot is just as dangerous as the pellet gun.

Make Mine Black

• Americans, who drink 115,000,000,000 cups of coffee every year, don't produce an ounce of coffee beans. And economists say that's lucky for us coffee drinkers, because with farm land and labor costs where they are, coffee raised in the United States would have to sell for at least \$6 a pound even if it would grow in our climate.

Are You Asking---

Q. If I withdrew all my account am I still a member of the credit union because of the 25-cent entrance fee?

A. No. The 25 cent fee covers the cost of opening up your account.

Q. Will the credit union accept more than the regular monthly payment on a loan?

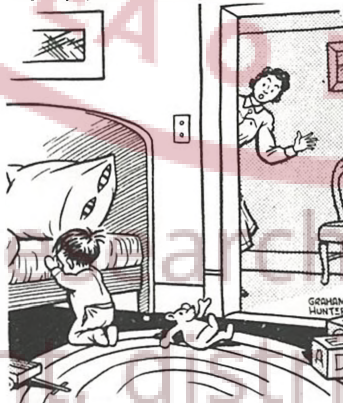
A. Yes. You save interest by increasing principal payments when you can.

Q. If I haven't joined the credit union during the year, can I join just to get a loan?

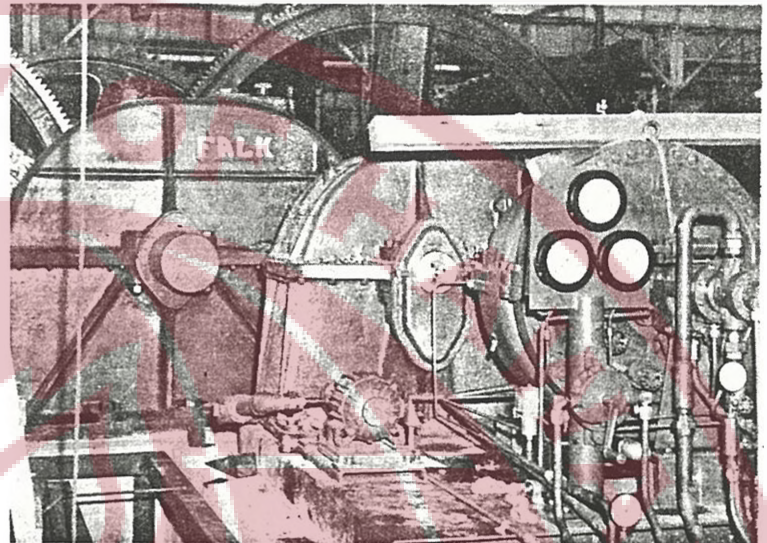
A. Yes. We are ready to do business any time!

Q. Can I make a new loan before my old loan is paid up?

A. If the new loan is for a proper purpose and advantageous to you, you usually can.



"... and please, Lord, put th' vitamins in pie and cake instead of cod-liver oil. Amen."



THE TURBINE is the small part on the right. Behind it are three sets of reduction gears. The turbine goes at 4,500 r.p.m. The gears slow the drive to a maximum of 7 r.p.m. to run the crusher and "A" mill. This is Hawaii's first sugar mill turbine drive. Ewa is proud that the installation and foundations were done by our own factory and shops personnel.

Looking Ahead

In this issue we want to take a look at an improving Ewa. An Ewa that is better than a year ago. An Ewa that looks ahead to a new year with promise of even better things to come. The big project during off-season was getting the mill going and ready for the next crop. Every department had a hand in it.

Preparation

We are reclaiming new areas of coral wastelands. Soon mud from our hydroseparator will convert these areas into fertile cane fields. The new drain ditch back of the mill is being repaired and rubble-lined.

Shops

Making parts for the new mill layout has kept the shops busy. Installing our turbine drive and new roof required welders and machinists to hook up all the pipes and lines for steam, water and oil.

Automotive

Every tounahauler, truck, tractor and automobile has had regular servicing. Out of 242 pieces of equipment, over 80 engines have been completely overhauled. More than 156 sets of brakes have been repaired and 1,027 tires changed. A representative of the Le Torneau Company said that our tounahaulers are in better shape now than when we first got them.

Mill

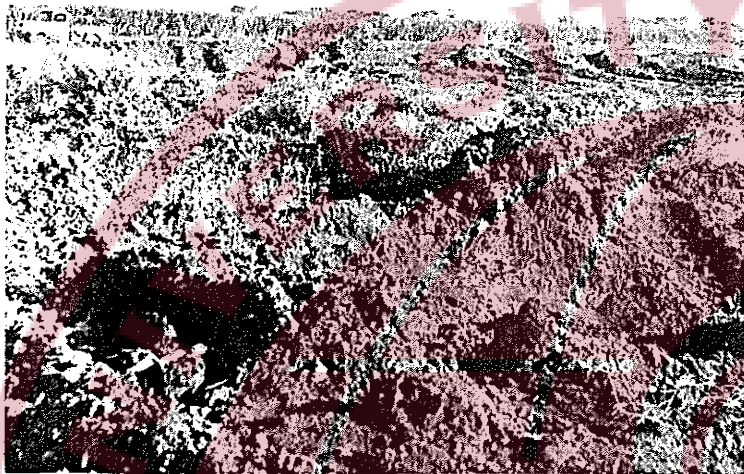
Besides the usual off-season overhaul, it took extra care and planning to set the "A" mill on its new bed. This year they'll be using the new power plant to grind our cane.

Construction

One of the biggest jobs was the foundation for our "A" mill train. Our industrial carpenter team did a fine job. Digging out rock and old concrete--enough to fill 80 trucks--started it all. Then they put in forms, steel reinforcing and poured 800 cubic yards of concrete.



PLAIN BUT EXPENSIVE...we have three new boiler arches in the fireroom. They're made of special firebrick but the heat still burns them out in about every 5 or 10 years.



READY FOR GRINDING season is this area below Field 83. Last year, it was partly covered with hydroseparator mud. Now it is banked up in sections to take on more. When the coral is covered with about 2 feet of soil, cane will be planted. Since 1950, Ewa has put 60 acres of coral waste to productive use.

Fireroom

Three boilers have new arches. These arches are made of firebrick and require lots of skill to put in.

Boiling House

New equipment for controls marks progress in the boiling house. Micromax electronic machines will give more accurate work with the clarifier and boiling pans. The crystallizers are getting new coils and three new save-alls went into our evaporators.

Electric

Our electricians have just finished lighting and wiring for the new mill layout.

Warehouse

The supplies we use to grow and make sugar are here. The warehouse has gas, oil, spare parts, gloves, hoes and safety goggles--all necessary to begin harvesting.

Hospital

Inspection is over for the human "machines." Nearly 1,000 of us have had our annual physical exams. This check every year gives warning of wear and troubles ahead.

Cultivation

Part of this division takes care of our roads. The main tounahauler roads have been put in top shape to take the heavy traffic. Last year, our tounahaulers made 26,395 round trips.

Irrigation

The first fields to be harvested in 1953 are on ripening schedule. Irrigation in these fields is stopped for some time before harvesting. This slows growth and increases the sugar in the cane.



NO WATER LOSS with concrete lined ditches. Crayfish and water seepage are hard on dirt ditches. This new ditch carries wash water from the cane cleaner to fields below the mill. Concrete helps put the water in the fields where it belongs without waste.

Gala Celebrations

Mark Rizal Day

The "B" Village and Filipino Village communities held special celebrations on December 29 and 30 in observance of Rizal Day.

An evening program on the 29th began the "B" Village festivities. Speakers were Gervacio Blue, Felix Clemente, Justo Macugay, Francisco Carino and Ramon Magaoy. Hula dance numbers were performed by Toria Hughlett and the Mesiona sisters. A Filipino folk dance was presented by a troupe of girls under the direction of Justo Macugay. Leocadio Cristobal's orchestra supplemented the program with musical selections.

Luncheon the next day at the clubhouse was followed by games and sports in the afternoon.

At Filipino Village, the residents participated in a field day of sports. The evening entertainment was a movie at the Filipino Social Club.

Hospital Notes

We've had lots of colds and sore throats the past couple of weeks. The sore throats have been the worst bunch in years.

If you do have a sore throat, come to the hospital right away so we can start you on penicillin. Generally, penicillin isn't used for the common cold. It's an advantage though, with complications like sinus and ear trouble, pneumonia and sore throats.

At home you can guard against colds by following these rules; three good meals a day; plenty

Dollar for Dollar--

You Can't Beat It!

Not enough money in the budget for that new dress? Ewa Recreation Association can make your clothes dollar stretch. It's easy.

The sewing classes (Tuesday and Friday nights at Tenney Center) are still open. The gals up there are learning to make clothes, draft patterns and they are having a good time at it.

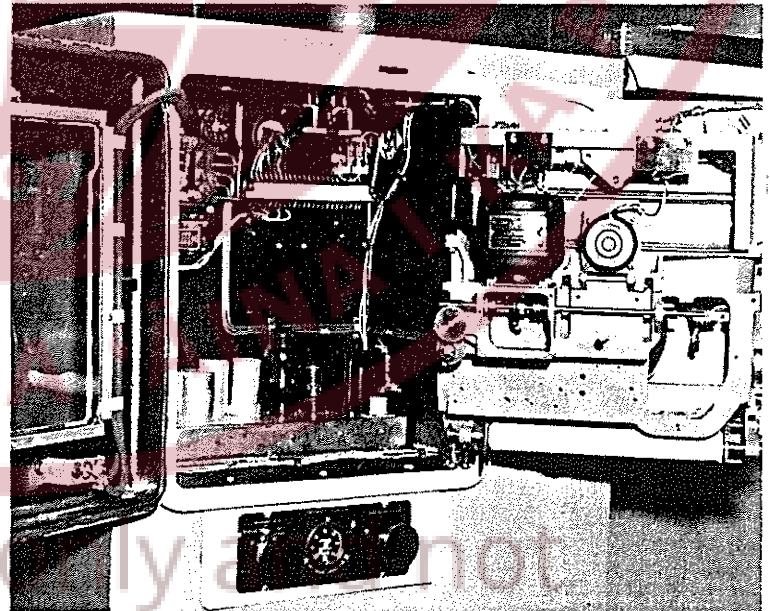
There's also a Saturday morning class for girls (12 and up and E.R.A. members). And we'll bet these will be the best dressed girls in Ewa very soon.

The fee for the sewing machines and class materials is a small one. Five dollars a month will enter you in the Tuesday or Friday night sessions (\$10 for both). That covers four or eight three-hour classes. The teenage class on Saturdays is only \$3 a month but you must be an E.R.A. member to join.

Sounds, good, doesn't it? Why don't you run down to the gym office and sign up, or just come to the next class. Six p.m. Tuesdays and Fridays and 8 a.m. or 1 p.m. Saturdays.

of rest; plenty of water (not from someone else's glass); and stay away from crowds. If you are coughing or sneezing stay away from crowds for the safety of others.

Remember, come to the hospital right away when you have a sore throat. With chills, fever or an ill feeling late in the afternoon, come to the dispensary in the morning (9 to 12).



ELECTRONIC CONTROLS mean more sugar. This micromax helps the pan man boil sugar. It controls the supply of molasses to the pan.

Another unit keeps the right amount of lime in the cane juice before boiling. Next year we'll also have a unit on the clarifier to control juices during the week-end shutdowns and prevent sugar losses.

NOTICE OF JOB VACANCIES

E. P. Employees Only

GROUND CREWMAN GRADE III
TOURNAHAULER DRIVER GRADE IV

Apply before 4:00 PM, 1-9-53

Ewa Meets Kohala In Cage Tussel

Thursday, January 8, the Kohala senior basketball team will arrive to play our senior OPAA five. Game time is 7:30 p.m. at the Tenney Center.

The visitors leave Friday for Kauai to play the Kekaha cagers.

Highlights of

Ewa's 1952 Sports

January - Pirates crowned ERA junior basketball champions.

March - Ewa dethroned as OPAA basketball champs.

April - Ford Konno displays Olympic winning form in swim show.

July - ERA senior baseball title won by 20th Century Club. Ewa nine again runner-up in OPAA baseball. Juniors third in American Legion baseball loop.

August - Ewa Fryers runner-up in Territorial Little League finals, won 3, lost 1. Raymond Rodrigues, rural prep star, awarded four-year scholarship at South Oregon College of Education. Edwin Miyake, Yoshiye "Red" Abe and Nagayoshi Ishizuka hook Fishing Club's biggest fish.

September - Hefty Aggies cop inter-division softball crown. Dopesters upset when Ewa B takes OPAA bowling honors.

October - Divot-diggers band into Ewa Golf Club.

November - B Village revives boxing, competes in AAU tourney. Tony Tadaki wins ERA Thanksgiving bowling sweepstakes.

December - Filipino Social Club garners ERA inter-club softball trophy. Tony Tadaki sweeps Christmas sweepstakes, stamped as bowler of the year.

Masato Higa

January's Golf Ace

Top swinger in the Ewa Golf Club's first monthly ace tournament was Masato Higa. On Sunday at the Kalakaua links he turned in the best card of net 66 with a gross 96 and handicap of 30.

Lei Yamasaki and Dick Takano with net 68's were tied for second. Finishing 3rd and 4th in the tourney were Stan Burden and Dean Jackson with scores of 70 and 72, respectively.

Tadashi Tazawa New E.R.A. Prexy

The Ewa Recreation Association held its election recently and Tadashi Tazawa was chosen to serve as president this year.

"Tako", as he is more popularly known, needs little introduction. He has long been one of Ewa's stellar athletes and active in ERA activities.

Other successful candidates were Shingo Jo as vice president and Mrs. Miyoko Ogawa, Yasuo Kameoka, James Ornellas, Lei Yamasaki, Walter Takiguchi and Artemio Respicio elected to the board of directors.

Through the Town...

Felix Clemente was elected president of the "B" Village Social club recently. Other officers are Martin Calamaan, vice-president; Vicente Peralta, secretary; Mrs. Lorraine Hermosura, assistant secretary; Elenc Que-rubin, treasurer; Alfonso Nel-mida, Martin Javien, Tony Rotanes and Roque Agcambot, sergeants-at-arms. Ramon Magaoy is advisor.

Atanacio Padonan, Alfredo Respicio, Mrs. Praxedes Respicio and Felix Clemente comprise the finance committee. Gervacio Blue is in charge of recreation, assisted by Alfredo Respicio. Sports managers are Andres Calivo and Dado Estanique.

Congratulations to our newly-weds:

Mr. and Mrs. Ernest Ishihara (nee Miss Alice Tokujo of Honolulu).

Mr. and Mrs. Masami Mishina (nee Miss Amy Fujioka of Honolulu).

Mr. and Mrs. Danny Yamasaki (nee Miss Vivian Igarashi of Tenney Village).

Stork arrivals....

Baby boy, Scott, born December 21 weighing 9 pounds 2½ ounces. He is the second child of Mr. and Mrs. Wallace Sugai of Tenney Village.

Mr. and Mrs. Shinji Inouye of Tenney Village are proud of their first child. Called Cynthia, she was born on December 22 weighing 7 pounds.

Cub Pack Chartered

Saturday, December 27th, Cub Pack 41, of the Boy Scouts of America, received its charter. Joseph Budge, District Commissioner for the Boy Scouts presented the charter to Mr. Yei-kichi Abe, representing the Japanese Social Club, sponsors of the Cub Pack.

The Japanese Social Club presented the pack with both American and scout flags.

Mr. Kazuo Muranaka is the Cub Pack leader.

IN SYMPATHY

Employees of Ewa Plantation Company extend their deepest sympathy to the family of Seberino Mihiyo, who passed away December 9. Mr. Mihiyo had been employed at Ewa since November, 1943. He is survived by a sister, Mrs. Escolastica Behic; three nephews, Teogenes Severino, Jr., and Samuel; four nieces, Faye Behic, Mrs. Connelley and Mrs. Katherine Corpuz; and three cousins, Eleuterio Mehio, Anacito Penarada and Elinio Njalot.



Wednesday, January 7

E.R.A. 850 BOWLING - 7 PM
Masuoka Insr. vs Jerry's App.
Hot Shots vs Asato Service
Hi-Way Inn vs Unknowns

Thursday, January 8

JUNIOR BASKETBALL - 6:30 PM
Niseis vs Rainbows
Y.B.B. vs 20th Century
FARMERS' BOWLING - 7 PM
Mikilua A vs Wahiawa
Waianae vs Ewa
Pearl City vs Mikilua B
Waiialua - bye

Tuesday, January 13

JUNIOR BASKETBALL - 6:30 PM
Pirates vs Ewa Beach
Buccaneers vs Kei Kokus

Wednesday, January 14

E.R.A. 805 BOWLING - 7 PM
Asato Service vs Unknowns
Hi-Way Inn vs Jerry's App.
Masuoka Insr. vs Hot Shots

Thursday, January 15

JUNIOR BASKETBALL - 6:30 PM
Kei Kokus vs 20th Century
Pirates vs Niseis
FARMERS' BOWLING - 7 PM
Mikilua A vs Waianae
Wahiawa vs Ewa
Mikilua B vs Waiialua
Pearl City - bye



Thursday, January 8

Ewa - "WAIT 'TIL THE SUN SHINES, NELLIE"
Jean Peters Hugh Marlowe
Waipahu - "THE DEVIL MAKES THREE"
Gene Kelley Pier Angeli

Friday, January 9

Ewa - "PUNGLO AT PAGIBIG"
Filipino Feature
Waiahu - "HAS ANYBODY SEEN MY GAI"
Piper Laurie Charles Coburn

Saturday, January 10

Ewa - "DAVID AND BATHSHEBA"
Gregory Peck Susan Hayward
Waipahu - "MUTINY"
Patric Knowles Angela Lansbury

Sunday, January 11

Ewa - "RED MOUNTAIN"
Alan Ladd Elizabeth Scott
Waipahu - "THE WORLD IN HIS ARMS"
Gregory Peck Ann Blyth

Monday, January 12

Ewa - "MERRY WIDOW"
Lana Turner Fernando Lamas
Waipahu - "SHURA HAKKO"
Japanese Feature

Tuesday, January 13

Ewa - "SHURA HAKKO"
Japanese Feature
Waipahu - "A YANK IN INDO CHINA"
John Archer Jean Willes

Wednesday, January 14

Ewa - "ACCORDING TO MRS. HOLYE"
Spring Byington Brett King
Waipahu - "COLORADO TERRITORY"
Matinee Only - Joel McCrea
(Title Unknown)

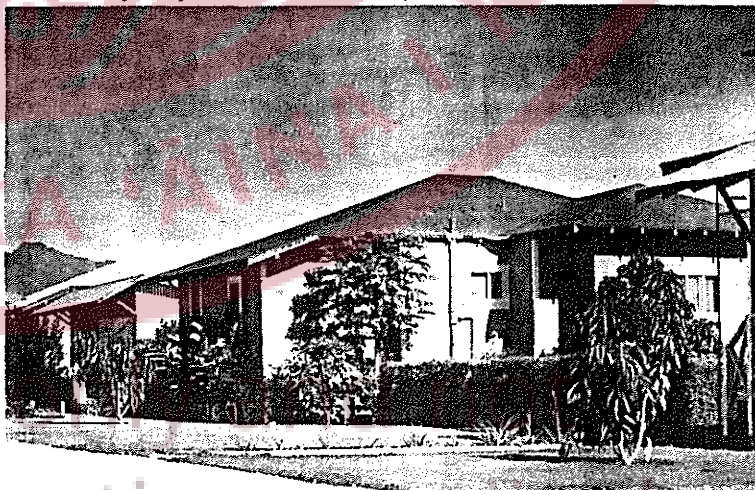
Filipino Feature

Thursday, January 15

Ewa - "AFFAIR IN TRINIDAD"
Rita Hayworth Glenn Ford
Waipahu - "THE RED SHOES"
Maira Shearer Anton Walbrook

Friday, January 16

Ewa - (Title Unknown)
Filipino Feature
Waipahu - "BLACK SWAN"
Tyrone Power Maureen O'Hara



With all the new houses in Ewa, many people are busy with their yards. Here's a picture in a new village of three years ago. The folks who live here have done a fine job. Their's is one of Ewa's nicest looking sections. If you're struggling with a bare yard, have hope. Your garden may look like this some day.