

EWA HURRI-CANE

VOLUME XVIII

Ewa, Hawaii, January 6, 1967

NUMBER 1

Whats Ahead for Ewa in 1967

Vacation time will be over for about 540 Ewa employees most of whom have been enjoying a long respite with the holidays sandwiched in between.

Monday, January 9, should see most of the plantation's work force back on the job - well-rested and ready to tackle the off-season chores yet remaining, and to carry on the numerous tasks that good farming demands.

SAYS THE BOSS..... 64,000 Tons or Bust!

The crop is there ready for harvest. And all that Ewa needs to attain that goal for the current fiscal year ending April 30, are the best effort of every member of the work force and some luck where weather is concerned.

First of all the factory must be put into shape. With the completion date (January 21) fast approaching, the factory personnel will be hard-pressed to meet the deadline. But there is every indication that the mill wheels will be turning and the haulers will be bringing in their loads on January 30.

9,300-Acre Plantation By the End of the Year

Preparation of new cane land has been going on without a break in stride. (Pictured below are equipment working in Field 6 during December). When the new section in Field 6 and the present forage farm area are planted to cane during the year Ewa will have attained a record acreage in cane.



Manager Ed Bryan says good team work with everyone on the work force giving his best all the time, will continue to make Ewa a good place to live and work.

Plantation Duty Roster	
Jan. 2, 1967 - Jan. 8, 1967	R. Gushnie 683-288
Jan. 9, 1967 - Jan. 15, 1967	J. Wakatsuki 683-352

HSPA News

George E. Sloane, sugar technologist in the Hawaiian Sugar Planters' Association Experiment Station Sugar Technology Department, became the department head on January 1, 1967.

He replaced John H. Payne who has left the Station on December 31 to accept an appointment with American Factors Associates, Ltd. Dr. Payne came to the station in 1948 and was named department head in 1949.

Sloane started at the HSPA Experiment Station in 1952 as a chemical engineer. Before that he was in the research department at California and Hawaiian Sugar Refining Corp.

W. J. (Bill) Crittenden has been named superintendent of the Hawaiian Sugar Planters' Association Substation at Hilo, Hawaii.

Since 1962, Crittenden has been assistant manager of the Substation under Orlando H. Lyman who is retiring in January. Crittenden spent two years teaching in California before joining the HSPA Substation at Hilo.

Ewa PTA to Meet Next Week

The regular bi-monthly meeting of the Ewa School PTA will be held on Monday, January 9, at 7:00 P.M. in the Ewa School auditorium.

The evening's program will be featured by a discussion of Cancer by Dr. Nathan Shklov of Waipahu. He will also show a film on this subject.

All parents are urged to attend this first meeting of 1967 to get the year started off right.

Alien Registration

Allens are reminded that they must register annually with the Federal Immigration Service during the month of January.

Forms are available at the Post Office and should be returned there upon completion before January 31, 1967. The forms should not be mailed.

March of Dimes in Ewa

Hawaii's annual Mother's March for the March of Dimes is scheduled for Tuesday, January 24.

Ewa's March will commence at 4:30 P.M.

Public support will permit expansion of programs of research to find causes and means of prevention, and will help improve the quality of medical care to help today's children whose lives are limited by physical or mental defects.

Please kokua---by having your porch light on, and your dog leashed---and of course, your donation ready.

Volunteers are needed. Those who would like to kokua are asked to contact Masae Yamane at 683-508.

Republican Precinct Club Meeting

The Ewa Republican Precinct Club will hold a general meeting at 7:30 P.M., Wednesday, January 11, at the Ewa School Auditorium.

Everyone interested in good government and civil improvement, is cordially invited to this meeting.

Your Social Security

If you are 72 or older and were told you cannot receive Social Security benefits because you have not worked long enough, write or call your Social Security office. You may now be eligible to benefits due to changes in the Social Security law.

The Honolulu Social Security Office is open until 7:30 every Thursday evening for those people unable to come in during regular office hours.

You don't have to wait until you are retired before you file your application for Social Security payments. In fact, you can sign up for these benefits three months before you reach retirement age. By filing before retiring, that important Social Security check can be in your mailbox without delay.

A field representative of the Honolulu Social Security office will be at the plantation Industrial Relations office on Tuesday, January 10, at 9:00 A.M. to assist local residents with their Social Security problems.

Why???



The morning of January 1, 1967 brought a rude awakening for Mr. and Mrs. Hermenegildo Cadang of Fernandez Village. Instead of finding the usual beauty of their pet carps (koi) serenely swimming in the fish pond, their horrified gaze fell upon a scene of wanton destruction. The fish of many brilliant hues that delighted their hearts floated dead upon the surface of the water fouled by a chlorine compound of some kind.

As they gazed upon their once gorgeously alive pets, they could only wonder - Why? And to be sure the entire community would also ask - Why?

Citizens Take Heed!

"...The Most Important Investment That Any American Can Make."

"...These were the words of the President of the United States when, on February 16, 1966, he announced an increase in the interest rate on U.S. Savings Bonds and urged all Americans to invest regularly in these securities as a means of strengthening our economy, supporting our fighting men in Vietnam, and preserving the purchasing power of our dollars.

Now, more than ever, Savings Bonds are a wise investment for every wage-earner. More than ever, such savings can help protect our country's future.

PAGE 2

EWA HURRI-CANE

January 6, 1967



The Safe Way is the Ewa Way

MAKE IT A SAFE YEAR
As we begin the new year each of us should make a pledge to do our part in preventing accidents. We should also make a pledge to take safety home with us after working hours because approximately seven out of ten deaths to workers and half of all injuries happen off the job.
It is easy to say that accidents won't happen to me, they only happen to the other guy. Did you ever stop to think that to the other guy, the other guy is you?
Accidents rob more working years than any disease. There is no pill or shot that the doctor can give you to lick the accident bug. It is strictly up to you!
With this thought in mind make a New Year's resolution to practice safety both on and off the job, everywhere and at all times. Who knows, the life you save may be your very own!

Rizal Day in Ewa



Used Christmas Cards Wanted

Ewa School needs Christmas cards for use by pupils for this year's Christmas season.

Students are encouraged to create their own cards out from the used ones. They are more personal and much more appreciated by receivers, especially parents and teachers. It also helps to bring out artistic ability and creative talent of the student.
Parents or students may drop the used cards in a box at Mr. Bachman's office at Ewa School.

Newlyweds

The marriage of Pres Rumbaoa and Rudy Pascua, was solemnized on December 17 at Our Lady of the Mount Church.

The wedding ceremony was performed by Father Thomas Miyashiro.
The bride is the daughter of Mr. and Mrs. Nick Rumbaoa of Molokai.
The bridegroom is the son of Mr. and Mrs. Miguel Pascua of Varona Village.

New Arrival

Congratulations to Mr. and Mrs. Frodozo Daquiel of Fernandez Village, who welcomed their first child, a son, on Monday, January 2, at the Ewa Hospital. They named the child Joseph Paul.

Ewa's Oldtimer

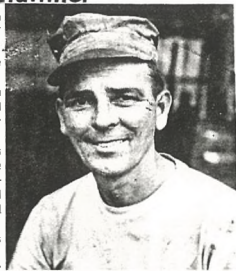
I.C.E. Mechanic Journeyman LOUIS ARTHUR PERREIRA leads off this column for 1967 as the plantation's "old timer" of the week.

"Art", a true son Ewa, was born and raised in this community and joined the plantation on December 1, 1942.

During the twenty-four years and one month service to date, he has worked in planting, harvesting, locomotive hauling, and continuously in the motorized equipment shops since December, 1947 except for about 1 1/2 years as a Mill Yard Crane Operator.

Having gone through the former I.C.E. Mechanic Trainee program, Art was a Junior mechanic until 1962 when he qualified for journeyman progression under the present Trades Program. He attained full journeyman rating in February, 1966.

Art is an amateur photographer of note and divides his leisure hours between this hobby and keeping his yard in top shape. Art and his wife, Irene have one son, Douglas, who is a sophomore at James Campbell High School.



Basketball

RURAL INTERSCHOOL LEAGUE
The Campbell Sabers will again use the Ewa gym as their home court during the '67 season.

The Sabers, in both the Senior and Junior divisions, open against the Kahukuans on Friday evening, January 13 at the Ewa gym.

The JV game will begin at 6:30 P.M.
Schedule for their first four games are:
January 13 - Ewa vs. Kahuku
January 14 - Waianae vs. Waianae
January 20 - Ewa vs. Redford
January 21 - Kaliua vs. Kaliua

EWA LOCAL LEAGUE
A meeting of representatives of teams in the area interested in the 1967 local league are asked to attend an organizational meeting to be held at 7:00 P.M. on Tuesday, January 10 at the Ewa gym.

EWA J.A.C. is expected to field a strong team this year, and speculation among the local fans has it that Ewa will make its might felt this season.

EWA J.A.C. is expected to field a strong team this year, and speculation among the local fans has it that Ewa will make its might felt this season.

Our Best Wishes...

For a speedy recovery to the following Ewaites who are recuperating at Ewa Hospital: Kazuo Muranaka, Keiji Mata, Mrs. Tsuru Sato, Mrs. Jewel Cooke, Mrs. Tsuru Kiriu, and Bruce Budge.

Japanese Movie

SPONSOR: Ewa Japanese Club
DATE: January 7, 1967
TIME: 7:00 P.M.
PLACE: Japanese Club Grounds
TITLE: "KOI TO NAMIDA NO TAIYO"
STARS: Hashi Yukio and Baisho Chieko

Play Ball!

The Rural Senior League opens its 1967 season this Sunday, January 8 with three games - Aiea at Waipahu, Wahiawa at Pearl City, and Ewa hosts the Waiakua nine at 1:30 P.M.

Headed by Kiyoshi Yasui, general manager, team officials are: Roy Higa, field manager; Choki Hokama, business manager; and Arthur Kono, advisor.

The players who make up Ewa's 20-man roster are: Yoshi Akasaki, George Arasato, Kenneth Hashimoto, Fred Higa, Raymond Higa, Robert Hokama, Norman Hosono, James Itamoto, Wayne Itamoto, Clayton Kiriu, Roy Nishio, Walter Omoto, Mike Oxley, Edwin Seto, Arnold Soma, Patrick Soma, James Teruya, Robert Tokunaga, and Larry Yamamura.

EWA J.A.C. is expected to field a strong team this year, and speculation among the local fans has it that Ewa will make its might felt this season.

EWA J.A.C. is expected to field a strong team this year, and speculation among the local fans has it that Ewa will make its might felt this season.

Ewa Bowlers Echoes

EWA COMMUNITY MIXED LEAGUE
Week of December 29, 1966:
Individual Highlights:
Women - Hi-3 w/hdcp., Fumi Nakamura, 550; Hi-1 w/hdcp., Ewa Maruquin, 228.

Men - Hi-2 w/hdcp., Tony Kiyohiro, 442; Hi-1 w/hdcp., "Froggy" Kunihiro, 233.	Team Standings
Takezu	23 13
Hiro	19 17
Tony	18 18
Primo	16 20
Duke	16 20
Kelly	16 20

for reprint, distribution, or display.