



EWA HURRI-CANE



VOLUME VII

Ewa, Hawaii, March 9, 1956

NUMBER 5



OLDTIMERS RETIRE....Celedonio Ellamil and Fabio Nadres retired from active service Wednesday, February 29.

On their last day of work, the company's aloha was extended by Ed Bryan, assistant to the manager, and Harry Duncan, irrigation superintendent.

Celedonio Ellamil And Fabio Nadres Retire From Active Service

Two oldtimers with combined service of 52 years retired from Ewa Plantation Company on February 29. Both of them were Irrigators at the time of their retirement.

Mr. Celedonio Ellamil served 29 years with this company and all of them were with the Irrigation Division. Mr. Ellamil came to Ewa in 1927 from San Fabian, Pangasinan, Philippine Islands. His family which consists of his wife, four daughters and two sons, are all residing in P.I. He plans to return to his family this May.

Mr. Fabio Nadres has a service record of 23 years with this company. Mr. Nadres came to Hawaii in 1917 from Tayabas, Tayaba, Philippine Islands but started his employment at Ewa in 1932.

Mr. Nadres resides with his wife at Filipino Village.

Easter Seal Drive Starts March 10

Hawaii's Tenth Annual Easter Seal Campaign will be held from March 10 through April 10. During this period, the people of Hawaii will be asked through appeal letters from the Hawaii

NOTICE OF JOB VACANCY

E. P. Co. Employees Only

IRRIGATOR - GRADE III
Apply on or before 4 p.m.
March 11, 1956

Chapter of the National Society for Crippled Children and Adults to support the direct services provided by the Society.

The purpose behind the Society is to serve the unmet needs of the crippled regardless of creed, race, age or crippling condition. Recent survey shows that more than 3,000 handicapped persons received direct services from the Society's affiliated county units during the past year in Hawaii.

Direct services to the crippled depend primarily upon the annual appeal of Easter Seals. Volunteers collectors will be at the Ewa Store on March 23.

Safety Score

DAYS SINCE LAST LOST TIME

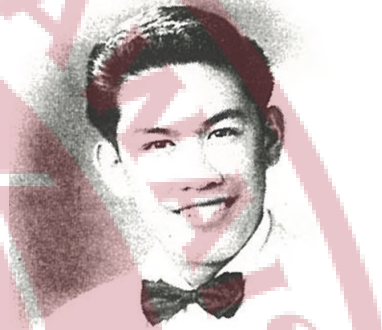
ACCIDENT AS OF MARCH 5, 1956

		<u>DAYS</u>
GROUP I	- FACTORY	314
GROUP II	- FIELD	184
GROUP III	- AGRICULTURE	109

House Vacancies

E. P. Co. Employees Only

Mill Village #83 - Apartment, Class 2-A Rent \$13.00 per mo.
"C" Village #43 - 2 Bedrooms, Class 2-B Rent \$15.50 per mo.
Application should be made before 4:30 p.m., March 14, 1956.



Enrique Lariosa of Fernandez Village recently volunteered for the Marine Corps. He is presently stationed at Pearl Harbor, waiting for his orders to be transferred to the mainland where he will take his basic training.

Enrique, a former P.I.C. student at Ewa Plantation Company, became a regular employee after graduating from Waipahu high school last June.

Enrique was a Knapsack Sprayer at the time of his enlistment.



AGRICULTURE COURSE....Currently taking an agriculture short course at the Hawaiian Sugar Planters' Association Experiment Station are Basil W. Hansen, left, mechanical ratooning foreman at Ewa Plantation Co., and Henry J. Vaspra, relief overseer at Waialua Agricultural Co. Here they are inspecting seedlings in HSPA's cane breeding plots. There are six other plantation men taking the agriculture course.

NEGOTIATIONS NOTES INSIDE

Ewa Plantation Company

Growers and Manufacturers of Cane Sugar

Ewa, Hawaii

J. N. ORRICK
MANAGER

AGENTS
CASTLE & COOKE, LIMITED
HONOLULU, HAWAII

ADDRESS ALL COMMUNICATIONS TO
EWA PLANTATION COMPANY

Dear Fellow Employees:

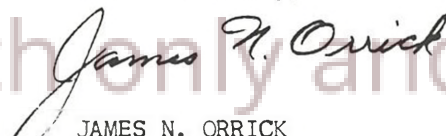
On Tuesday you will vote on whether you accept the sugar industry's FINAL OFFER. Because it is the final offer, you will be voting whether to go on strike or not.

You may have been told that to accept the Company offer will break your Union --- this is not so. Our record will stand on its merit and shows that at no time have we tried to bust the Union.

The sugar industry cannot give more. Its back is to the wall on costs. The sugar price has gone down for the past two years. This means that our income has gone down for the past two years. This and the high cost of pensions and other fringe benefits given in the last negotiations have forced us to stand up and say, "We can go no further." There is just nothing to give with.

I ask you to remember these things when you vote on the final offer next Tuesday. It is a good offer with many benefits for you.

Yours sincerely,



JAMES N. ORRICK
MANAGER, EWA PLANTATION COMPANY

For research only and not

for reprint, distribution, or display.

HERE IS YOUR OFFER

Below is a breakdown of proposed changes in the Contract

offered to you through your Union Negotiating Committee

Group Insurance

Your Company has proposed that life insurance coverage for all employees. In this plan the Company will bear a large share of the cost. You couldn't buy private insurance unless you paid twice the amount proposed in this offer.

Insurance coverage will be based in proportion to your pay.

Yearly Earnings	Amount of Insurance
Less than \$2500	\$3000
\$2500 to \$4000	\$4000
\$4000 and over	\$5000

No employee will pay more than 60 cents per month for each thousand dollars of insurance coverage.

EXAMPLE: If you earn \$3000 a year you would be entitled to \$4000 of insurance. Your payments would not be more than \$2.40 per month (4 x 60¢).

Other Proposals

Your Company has also asked the Union to agree to other contract changes. Some of them are increased benefits to you. Some are provisions to insure smoother working conditions and better understanding of the contract.

TRANSFERS: Changed language to spell out the original meaning in the section on filling job vacancies.

VACATIONS: Two weeks vacation for all employees regardless of hours worked. Vacation pay to be 2 percent of annual straight time earnings during first year of service and 4% of yearly straight time earnings for those with more than one year of service.

Also: If, the Union agrees to 1 cent less in the wage raise, then the Company will offer three weeks vacation to employees with 20 years service.

ILLEGAL STRIKES: The Company wants assurance from the Union the "No Strike" Section will not be violated by illegal work stoppages.

OR

The Company offers the alternative of the Company not collecting Union dues one month for each day of job action after the Company notifies the Union.

UNEMPLOYMENT COVERAGE FOR FIELD WORKERS: In event agricultural workers (not covered by unemployment insurance) are laid off the Company proposed that a private plan be set up to provide these men with unemployment pay equal to that received by factory workers (covered by Territorial Law).

Wages

Your Company proposed to the Union that for a three-year contract would be raised:

3 cents an hour when the agreement is signed.

3 cents MORE on February 1, 1957, and

3 cents MORE on February 1, 1958.

total of 9 CENTS

Severance Pay

Your Company proposed to provide special pay to employees who are laid off. Actually no layoffs are planned at Ewa.

A. Special benefit to laid-off workers who are planning to return to their homeland. --- 34 days pay.

B. In addition all workers will receive these benefits if laid off.

Yrs. of Service	Days Pay
-----------------	----------

1	10
2	10
3	10
4	10
5	15
6	20
7	25
8	30

Each additional year / 5

Special increase for older men:

40 to 49 years	10% more
50 to 54 years	35% more

For use only and not for reprint, distribution, or display.



THREE MUSKETEERS CAPUT....Two bachelors from Ewa Plantation Company and a friend from Waipahu left aboard the President Wilson last Thursday to their Philippine homeland. They won't be the same when they return. The trio is planning to get married and bring their brides back to Hawaii with them. Left to right are: Marcelino Cabilan, Antonio Pagdilao, and Diego Cadiente.

Ewa Softballers Defeat Regional Office

By Takeshi Ishihara

Coach Hakaru Tamura's Ewa Greens in the I.L.W.U. Softball League played its final game of the season by displaying a superb defensive combination in trouncing the Regional Jets 3 to 1 last Sunday at the Ala Moana Diamond.

Toki Kawakami's neat 5 hit performance on the mound turned the trick for the sugar boys as the pencil pushers from the regional office were held at bay for the entire 7 innings.

Ewa scored what proved to be the winning runs in the 4th inning on a sudden burst of offensive power by denting the plate for 3 runs on 4 solid hits.

Kite Contest

On Tomorrow

The Ewa youngsters are looking forward to clear sky and high wind this Saturday for the E.R.A. annual Kite Contest.

A good number of participants are expected to turn out for this contest at the Ewa ball park.

Leeward High Play Written By Students

Waipahu high school seniors will present a musical comedy entitled, "Hi, Neighbor!" on March 15, 16, and 17 at the Waipahu High School pavilion. The play starts at 7:45 p.m.

Tickets are now being sold to the public by the seniors. Admission for adults is 75¢ and students, 50¢. Tickets may also be obtained at the door on any of the three evenings.

The play was written by seniors, Lucy Monin, Betty Jane Patacsil, Estrella Camarillo and Mrs. Annie Akana, senior class advisor.

General chairman of the class play is Esther Oishi. She is assisted by Betty Jane Patacsil, dramatics director; Wakefield McCoy and Estrella Camarillo, music directors; Nancy Oshiro, Alice Sato, Angelita Reyes, publicity chairmen; Elaine Nitani, art director; Elaine Ohira, house manager; Eugene Chinen and David Shinsato, technical directors, Jo Ann Shinsato and Gladys Ueoka, finance and tickets.

Don't drive as if you owned the road—drive as if you owned the car

25th Div. Hounds Show Tonite

The Army Dog show, sponsored by the Leeward Oahu Lions Club, will be held this evening at the Tenney ball park.

On the program will be an Army Band from Ft. Shafter, a platoon of 12 Army dogs and a 20-men drill team from Schofield.

The program will start at 6:45 p.m. with the band concert.

Y.W.C.A. Notes

By Harue Tarasawa

The Y.W.C.A. offers a varied program of which the Y-Teen is one. There are a total of seven Sr. Y-Teen clubs and two Intermediate clubs in the Rural area covering Kahuku, Wahiawa, Aiea, Waipahu, Ewa, and Nanakuli. Membership in the club is open to any girl in the 7 to 9th grade of Intermediate Y-Teen and 10th to 12th grade for Sr. Y-Teen clubs. The girls plan a wide variety of activities and events which help them:

1. To grow as a person
2. To grow in friendship with people of all religion, races, and nationalities
3. To grow in the knowledge and love of God.

Ewa's Hui Akamai is composed of 34 girls. The officers: President, Laura Abe, vice president, Frances Hoshino, secretary, Jean Tanaka, treasurer, Joan Nakagawa, rural inter-club representative, Elaine Nitani and Alice Sato.

A very important member of any club is the advisor, who offers guidance, skills, and friendship. Hui Akamai's advisor is Miss Linda Shinozawa. Linda, who teaches at Ewa School, was a member of the girl reserves and is therefore familiar with the Y-Teen program. Last week, Y-Teens were seen going through the town taking orders for lau laus. The money gotten from the sale will help to pay part of Diane Yawata's fare to Territorial conference on Kauai and help this year's Asilomar delegate.

Classified Ads

FOR SALE...G.E. Wringer Washer used only 3 years. Good condition. Inspect and make offer. Phone 28-3220.

New definition of a rugged individualist: one who can eat chicken with his fingers without making excuses.

Ewa Young Buddhists To Stateside Meet

Ten members from the Ewa Young Buddhists Association headed by Shungo Jo will leave tomorrow evening at 6:30 from the Honolulu Airport to attend the Western Young Buddhists League convention at Sacramento. The three days convention will be held on March 16, 17, and 18.

Following the convention, the Ewa group will stop over at Reno, Nevada for few days of fun, relaxation and sight seeing.

Those who will be making the trip are: Ernest Wakimura, Shoichi Shimizu, Henry Inouye, Hachiro Funayama, Shungo Jo, Adeline Kameoka, Helen Nitani, Bessie Ito, Dorothy Ito and Peggy Kimura.

Dance At Ewa Gym This Saturday Night

The members of the Sonics Orchestra are sponsoring a dance at the Ewa gym this Saturday, March 10. The hours of the dance are from 8 to 12 midnight.

The admission charge to the dance is \$1.00. Tickets may be purchased at the gym office on the evening of the dance.

March Ace Winners

Wilbur Kaialua slammed through 18 holes, 83-16-67, last Sunday at Kalakaua Golf Course to win the Ewa Golf Club's "March Ace" tournament.

Harvey Kaneshiro finished a stroke behind Wilbur with 85-17-67. Bob Ouchi came in third with 80-11-69, followed by Dean Jackson with 82-12-70. Tied for fifth place were Larry Shigeyasu and Megumi Nakamoto with net 72.

The club's next tournament will be held on March 19th at the Leilehua Course.

Hula Classes Offered

Mrs. Jackie Anderson will conduct hula classes at the Immaculate Conception Church from March 14. The classes will be held in the afternoon from 2 to 3 and 3 to 4.

For those interested, she will be at the Parish Hall on Monday and Tuesday, March 12 and 13 from 1:30 to 2:30 for registration.

For more information about the hula classes, call 28-6425 or leave a message with 28-3307.