

EWA HURRI-CANE

VOLUME IX

Ewa, Hawaii, December 26, 1958

NUMBER 26

PAGE 2

EWA HURRI-CANE

December 26, 1958

THE EWA HURRI-CANE
Published fortnightly by the Industrial
Relations Office, at Ewa Plantation
Company, Ewa, Hawaii, Phone 28-3591

Managing Editor.....Chas. Vgloria
Editor.....Kats Wakatsuki
Typist.....Reaonda Diaz
Staff Photographer.....Gervacio Blue
Printers.....PHOTO-OFFSET by Fisher Corporation, Ltd.

The New Year

1958 will pass into history in a few days. We cannot help but see that the year has not been kind to Ewa. The gloomy atmosphere which clouded our community's usual sense of well-being during most of the year, gave many of us much unhappiness and at the same time imparted an overpowering sense of uncertainty for the future. Whatever was done cannot be undone. We can only bow to the circumstances we find ourselves in and make the best of the situation.

Let us all - united in spirit, strength, and courage - face the New Year with faith and hope, with strong determination to mold a future that will bring much good for all of us. Let us look to a bright tomorrow, leaving behind the gloomy yesterday but with the somber thoughts of its dark side firmly impressed upon our minds.

With these thoughts I join you in greeting 1959. May the New Year be good to Ewa.

Ewa School P.T.A. Meeting On January 19

The general meeting of the Ewa School P.T.A. which was originally scheduled for January 12, 1959 has been changed to January 19, 1959. The change was made because Dr. William D. Lampard of the University of Hawaii will not be able to appear on January 12.

The Executive Board felt that it was well worthwhile to change the meeting date so that the Ewa P.T.A. members would be able to hear Dr. Lampard speak on "Parent Education Toward Self Discipline". This is a repeat of the successful talk he presented at the Hawaii Congress of Parents and Teachers Association Convention in November.

Benito Apostadiro Elected Unit Chairman

Benito Apostadiro will head the I.L.W.U. Local 142, Unit 53 in 1959. He was elected unit chairman at the election of unit officials for 1959 held on Friday, December 19 at the Ewa Union Hall.

Re-elected as vice-chairman was Henry Katakura. The other two newly elected vice-chairmen were Clemente Santa Monica and Felipe Lariosa.

The secretary is Robert Lobatos, re-elected, and Ignacio Tacadens, treasurer, also re-elected.

There will be a question and answer period following Dr. Lampard's talk.

A.G. Budge Elected President of H.S.P.A.

A. G. Budge, Castle and Cooke president, was elected 1958-59 president of the Hawaiian Sugar Planters' Association. He succeeds Boyd MacNaughton, C. Brewer & Co. president.

Other new HSPA officers for 1958-59 elected on the opening day December 2, of the HSPA's three-day 78th annual meeting were: First vice president, James H. Tabor, Theo. H. Davies & Co. president, and second vice president, J. W. Cameron, Alexander & Baldwin's vice president and general manager.

These four and George W. Sumner, American Factors president, form the 1958-59 executive committee.

Re-elected HSPA officers were S. M. Miller, vice president (and Washington representative); S. L. Platt, secretary, and T. M. Brown, treasurer.

Alien Registration January 1-31

As required by the U.S. Immigration law, all aliens living in this country on January 1, 1959 must submit address report card to the Commissioner, Immigration and Naturalization Service within 30 days from January 1st.

Any alien temporarily absent from the country during the reporting period shall report his address within 10 days after his return. Failure to do so could lead to deportation.

Go to any United States Post Office and ask for an Annual Address Report Form 1-53. Read the instructions carefully and complete the form. Take the completed card to the post office and hand it to the clerk. Do not mail the card yourself.

The Ewa Japanese club has set a date, Monday, January 5, to assist those who may need the help in filling out the form. A group of volunteers will be at the social club from 6:30 p.m.

Ewa's 1958 Sugar Production Down to 26,518 Tons; Lowest Since 1899

The last of Ewa's 1958 crop was harvested and hauled to the mill yard at 6:05 p.m., Monday, December 8 and was milled by Tuesday noon. Production for the year amounted to 26,518 tons of 96° DA sugar, the lowest since 1899 when we produced 22,927 tons. The average tons of sugar per acre for the crop was 6.30, the lowest since 1893 when we produced an average of 6.13 tons. As to the next year's crop, no one knows how much it will produce. However, there's one thing that seems certain - that is the production will be only about half our normal production or about 30,000 tons.

The average age of cane harvested this year was 27.44 months. Normally, the cane is harvested at the age of 23 to 23½ months. Just to show how badly our fields were hit, here are some figures of our last three fields harvested this year in comparison to the same fields harvested in 1956.

Tons Sugar Per Acre

| Fields | 1958 | 1956 |
|--------|------|-------|
| 3 | 4.76 | 13.62 |
| 5 | 3.07 | 13.04 |
| 20.1 | 2.69 | 12.64 |

Figures below show comparison of 1958 crop to crops of previous five years.

| Crop Year | 96° D.A. Sugar | Tons | Days | Tons Sugar |
|-----------|----------------|----------|----------|------------|
| | | Net Cane | Grinding | Per Acre |
| 1958 | 26,518 | 358,455 | 124 | 4,233 |
| 1957 | 61,392 | 475,545 | 157 | 4,424 |
| 1956 | 57,727 | 467,728 | 157 | 4,329 |
| 1955 | 60,989 | 463,694 | 159 | 4,333 |
| 1954 | 61,500 | 484,038 | 179 | 4,345 |
| 1953 | 61,643 | 475,532 | 169 | 4,337 |

Off Season

The off season will bring changes in the everyday work routine to many men on the work force. With this change an extra safety effort should be made to be sure that all concerned are following safe work methods and wearing proper protective equipment.

1958 Social Security Changes

By Harold S. Burr

The 1958 amendments eased the requirements for dependents of Social Security beneficiaries. A disabled child over 18 no longer has to prove actual support by a parent who dies or starts to receive Social Security benefits in order to receive benefits himself. Where a disabled child over 18 has been in an institution such as Waimano Home for a long time and was previously disallowed by Social Security, benefits may now be payable by filing a new application.

The dependent parent of a deceased worker may now be eligible for benefits even if a widow, widower or child survived. Such dependent parent should file application immediately, even if death occurred many years ago.

Until now, a child must have been adopted three years by a retired or disabled worker receiving benefits before the child himself could qualify for benefits. The three year requirement has been removed by the new law. Also, the 1958 changes say that a child adopted within two years after a worker's death may be eligible for benefits if the child was living with the family at the time the worker died. Formerly, a legal adoption under the laws of Hawaii must have been completed before the worker died for the child to receive benefits.

Our provision is somewhat tighter. The lump sum death payment can now be paid to the widow only if she was living with her husband when he died. If she was not living with him, his burial expenses must be paid by her before Social Security can make the lump sum death payment to her.

Five Employees Repatriate

Five of Ewa's employees returned to the Philippines on December 15. They elected early retirement to take advantage of the repatriation benefits offered under the Pension Plan.

Luciano Agtarap is a native of Vintar, Ilocos Norte, Philippine Islands. He arrived in Hawaii on June 16, 1919. Mr. Agtarap, who is 63 years of age, was first assigned to work at Kipa hulu Plantation on Maui. He worked there for three years then came to Ewa on November 16, 1922. He was with this Company since then, mostly as an irrigator.

Cipriano Bragado arrived in the Islands 26 years ago. He was hired on April 29, 1932 as a field laborer. Mr. Bragado, who is 53 years of age, is a native of Asingan, Pangasinan, Philippine Islands. Mr. Bragado was with the field department as a ground crewman during the greater part of his employment with the Company.

Jose Cabonot started his career at Ewa on February 22, 1933.

Before coming to Ewa, he was assigned to the Honokaa Sugar Company on Hawaii. He worked there for several months then came to Oahu where he worked for the California Packing Corporation and the Hawaiian Pineapple Company. During his 25 years of service here, he was with the housing department as a yardman. Mr. Cabonot is 56 years of age and is single. His hometown is in Tayug, Pangasinan, Philippine Islands.

Felipe Factor, age 62, came to Hawaii in 1932 from Piddig, Ilocos Norte, P.I. He was first assigned to McKee Sugar Company, Kealia, Kauai, then was later

MANUEL CALIVO, a long-time employee of Ewa, has 35 years and 8 months of continuous service with the Company.

A native of Vintar, Ilocos Norte, Philippine Islands, he came directly to Ewa with his wife, Macaria, on April 28, 1923.

Mr. Calivo has been with the field department throughout his 35 years on the plantation. During this period, he held such jobs as seed cutter (2 years), irrigator (6 years) and tractor driver (27½ years).

Mr. and Mrs. Calivo have seven children----four sons, Alfredo, Florencio, Andres and Patricio; three daughters; Aurelia Estaniqui, Beatrice Estaniqui and Rosalina. All are married and have children of their own except Rosalina who is still single. Mrs. Aurelia Estaniqui is with our Ewa hospital staff.

Mr. and Mrs. Calivo are residing at Varona Village.



Parson's Corner

By Dr. William Wirt
Minister of the Ewa Community Church

Yul Brynner, the actor whose "trademark" is a shiny skull with no sign of hair, was interviewed in a recent Saturday Evening Post. There he is quoted as remarking: "All my life I've had a certain understanding. It's this: Death is an integral part of everyday life. You know when your birth was, but your death is not predicted. What makes you think it will be ten years from now? What makes you think it won't be tonight? But if I knew I was going to die tonight, with what care I would live this day! How much more clearly I'd hear the songs sung around me! How much deeper would I look into the faces of friends!"

Do you have this understanding that death is an integral part of everyday life? You can't pick up a newspaper without reading about people meeting death unexpectedly. There are traffic accidents, plane accidents, ships that fall to weather storms, tornadoes that sweep through populous towns, tidal waves that race pell-mell across wide oceans. And now we all live under the possible doom of atomic war! Death is indeed an integral part of everyday life.

Then why not live this day, and every day, relishing its beauty, its potentialities of friendliness, its songs and laughter, to the full? Why not give voice to your true appreciation for your wife or husband or children, or your home, instead of putting it off until it may be too late? Why not come to church next Sunday, and every Sunday that you are able to do so, instead of arguing with yourself that "there'll always be plenty more Sundays when I can make my peace with God, and express my love for Jesus Christ". Perhaps this little poem may suggest a real truth:

When Sunday comes I go to church!
I make this weekly visit
So that if I should be carried in
Our Lord won't say "Who is it?"

Correction

Here in January 25, 1932. Mr. Factor was with the irrigation division most of his 25 years in Ewa.

Gervacio Tomas arrived from Urdaneta, Pangasinan, Philippine Islands in January, 1930. He was assigned to Honokaa Sugar Company on Hawaii. He started his career in Ewa in December 2, 1930 with the field department as a field laborer, then in 1941 he was transferred in the factory department and where he remained until he repatriated to his homeland.

The enthusiast often quits and lets the plodder win.

--Anon

For research only and not for reprint, distribution, or display.

Introducing....



Dr. Edwin Tasaki, 28, of Honolulu recently opened his dental office at Mill Village.

Dr. Tasaki graduated from the St. Louis College in 1949 and from the Creighton University School of Dentistry in 1956.

After graduating from the dental school, Dr. Tasaki spent two years with the Air Force in Japan.

He is married to the former May Kayahara who taught at Ewa school four years ago.

His office hours are Monday thru Wednesday, 10 a.m. to 6 p.m.; Friday, 10 a.m. to 6 p.m.; and Saturday, 9 a.m. to 6 p.m.

Never excuse yourself. Never pity yourself. Be a hard master to yourself -- and be lenient to everybody else.

Social Security Tax Rate Goes Up On January 1

Beginning January 1, 1959, the new tax rate for Social Security will go up from 2 1/4% to 2 3/4% for both employer and employee.

The tax will be based on the first \$4,800 of annual earnings. Before that date, the tax at 2 1/4% was paid only on the first \$4,200.

Naturally how much extra is deducted will depend on how much you make. For example, if you made the following:

Table with 3 columns: Annual Wage, In 1958, you paid for Social Security, In 1959, you will pay for Social Security. Rows show wages from \$2,600 to \$4,000 and corresponding tax amounts.

Through the Town

NEW ARRIVALS....Weighing in at 7 pounds 15 ounces at birth was MARY MAGDELENE, daughter of Mr. and Mrs. BENITO APOSTADIRO of Fernandez Village.

Mr. Apostadiro is with the cultivation division.

ESTRELLITA, daughter of Mr. and Mrs. CONCORDIO SIMPLICIANO of Fernandez Village was born on Tuesday, December 16 at the Ewa hospital.

The Simplicianos have three other children--Cynthia, Rowland and Marilyn.

Mr. Simpliciano is with the factory department.

NEWLYWEDS....Congratulations to Mr. and Mrs. HIROSHI WATANABE of Mill Village who were married on Saturday, December 6 at the Aiea Sto Mission.

The bride is the former Misae Yamada of Aiea.

Mr. Watanabe is with the preparation division.

Miss JANE COLOMA, daughter of Mr. and Mrs. TIMOTEO COLOMA of "C" Village and ROBERT LUCERO of Barber's Point were married at the Ewa Immaculate Conception Church on Saturday, December 20, with Father Thomas Miyashiro officiating.

The reception was held at the Varona Village clubhouse.

Credit Union to Hold General Meeting In January

The annual general meeting of the Ewa Federal Credit Union will be held in the latter part of January at the Ewa Social Hall.

The main features of this meeting will be the election of new officers, presentation of financial reports by the treasurer and various committee members and the declaration of the dividend rate.

Door prizes will again be given out. There will be more about the prizes in the next issue.

Shunichi Kikuta Elected Prexy of Ewa Japanese Club

The 1959 officers of the Ewa Japanese Club are: Shunichi Kikuta, president; Hatsuji Yamasaki, first vice president; Masatoshi Sugimoto, second vice president; Akio Sakai, Japanese recording secretary; Yoshiyasu Terao, Japanese corresponding secretary; Wataru Takaki, asst. Japanese corresponding secretary; Haruyuki Ogawa, English secretary; Shigeru Tsutsumi, asst. English secretary, Kiyoshi Okano, treasurer; Yutaka Hiroshige, asst. treasurer; Yeikichi Abe, auditor; and Susumu Ishii, auditor.

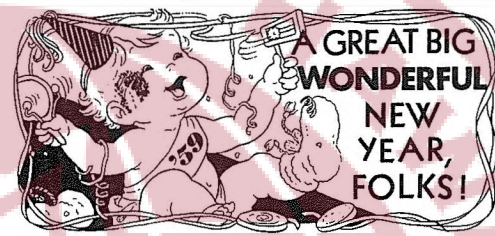
The members of the Board of Directors are: Sasaichi Horie, Kuichi Uchida, Takashi Isurumaki, Torajiro Sato, Shunichi Kikuta, Hatsuji Yamasaki, Yutaka Hiroshige, Kunie Kojima, Issamu Sakai, Matsusuke Oshiro, Komaji Mishina, Yeikichi Abe,



Masaru Isono. Also, Kameshiro Abe, Shigeru Tsutsumi, Akio Sakai, Wataru Takaki, Susumu Ishii, Hajime Takemoto, Yoshiyasu Terao, Jujiro Numasaki, Hirokichi Hoshino, Tedashi Okaji, Kiyoshi Okano, Haruyuki Ogawa, Masatoshi Sugimoto and Jack Uesugi.

The committee chairmen are: Yeikichi Abe, entertainment; Masatoshi Sugimoto, welfare; and Hatsuji Yamasaki, finance.

This Saturday, the Ewa Japanese club will put on a free movie "Arashi No Kodokan" at the clubhouse grounds.



It's About That Time Again

It's time to renew your E.R.A. membership. Let's think about it now and join the Association the first chance we get.

The sooner we join, the sooner we will be able to take advantage of all the programs offered by the E.R.A.

For \$3.00, we can't ask for a better deal.

Annual E.R.A. Membership Meeting On Dec. 29

The annual E.R.A. membership meeting and election of officers for 1959 will be held on Monday, December 29 at 4:00 p.m. at the Tenney Center gym.

Here are the candidates for the Board of Directors: Fred Stokes and Sandy Aragon, for president; Richard Kato and Robert Lobetos, vice president; and for the other six seats on the Board, Judy Nagatani, Rea-londa Diaz, Takeshi Ishihara, Theogenes Behic, Charles S. Sato, Ignacio Tacadena, Robert Oshiro, Charles Goto and Zacarias Lastimado.

Every member is encouraged to participate in this meeting.

Detective Story

This story begins with three words spoken by a child: "My head hurts."

That's the time for the detective squad to move in. A child's headache is never to be taken lightly.

The most common causes of headache in children are allergy, digestive upsets, respiratory infection, and emotional or nervous tension. A headache may be an early symptom of measles, chicken pox or whooping cough. A severe, persistent pain at the base of the skull may mean meningitis or polio. Eyestrain is another possibility.

The first thing to be done in the course of the investigation is to put the child to bed promptly and watch him carefully for the next few hours. If an infection is on the way, other symptoms will soon appear, and the doctor should be called.

A child who frequently complains of headache needs to have an over-all examination by the family physician. If the cause is an allergy, in most cases the doctor can discover the offending substance and it can be banished from the child's surroundings.

All children should have their eyes checked, preferably as soon as it is feasible, even if there are no headaches.

There are new remedies which ease tension that may relieve headache from emotional stress. A child with this type of headache may also need more understanding and love at home, at school and among his playmates. When these needs are filled, it is likely that the headaches

Rumelia Flores On HSPA's Rizal Day Program

A special Rizal Day program on Monday, December 29 will be presented by HSPA at 4 p.m. on KPQA.

Miss Rumelia Flores will present a reading of one of the Filipino leaders' outstanding speeches.

Y.B.A. News

EWA Y.B.A. NEW YEAR'S SERVICE Thursday, January 1, 1959 at 1:30 a.m. Y.B.A. Hall Rev. Kishi

Back the attack on traffic accidents---a chance taker is a potential crash maker. --Gerald Swift

will decrease and eventually vanish.

Whichever culprit causes headaches, a doctor can usually detect it. Don't let your child be robbed of feeling well and healthy.

Dahu Tuberculosis and Health Association

With The Golfers

Larry Shigeyasu shot an 82-13-69 score last Sunday at the Leilehua course.

Other winners of the Ewa Golf Club's tournament were: Jack Tanaka, 85-12-73; George Kaea, 93-19-74; Woody Kau, 81-7-74; Tom Yoshimoto, 87-13-74; Tokuo Yoshida, 85-10-75; and Sakae Kawamoto, 86-11-75.

Masato Higa shot an 82-7-75 (low gross).

George Kaea won the President's Trophy (Tokuo Yoshida) with net 137 for 36 holes.

Steve Suda was elected president of the Ewa Golf Club for 1959 by his fellow golfers recently. The secretary-treasurer is Lei Yamasaki.

The committee chairmen are Carl Shimoda, Robert Kuraoka, Mato Maruyama and George Matsukawa.

Mistakes of the past can be made into guide-posts of the future. --Gerald Swift

Brief Notes of Interest

The Ewa gym will be closed on the following dates: December 25 and 26; January 1, 2, 3 and 4.

The Waipahu high school junior and senior varsity basketball teams will play against the Waianae high school quintets on Tuesday, January 6 at the Ewa gym. The juniors will tangle at 6:30 p.m., followed by the seniors at 8 p.m.

Ewa junior AJA baseball team will take on Waipahu's Shryukai on Sunday, January 4 at the Ewa ground at 1:30 p.m.

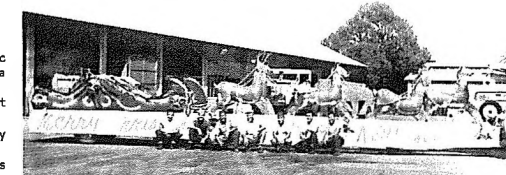
Classified Ads

FOR SALE. 1946 3/4 ton Chevy truck equipped with overload spring. Best offer. Phone 283-363.

Santa's Annual Visit to Ewa



Here we see Santa Claus (Takeshi Tsutsumi) on his annual visit to the Ewa community as his helpers shower the children and adults with candies.



Here's the hard working crew under Raymond Rodrigues who has the annual job of putting the Santa's float together. They are from left to right, Jerry Hishinuma, Hirotda Yoshioka, Hirao Kamooka, Raymond Rodrigues, Seishin Chinen, Taichi Imada and Takeshi Tsutsumi.

Advertisement for 'How to Do it' by Harold Hewitt. Includes diagrams of a record cabinet and kitchen pencils, and text about kitchen pencils and magnets.

For research only. Not for reprint, distribution, or display.