



EWA HURRI-CANE

VOLUME X

Ewa, Hawaii, August 7, 1959

NUMBER 16

ROBINSON'S LEASE EXPIRES; PLANTATION LOSES 168 ACRES

The twenty-year lease obtained by the plantation on January 1, 1938 from the estates of James Robinson and Mark A. Robinson at Apokaa expires with harvest of Fields 33, 34, and 35. (See map.) Although these fields were harvested this year, seed is still being cut in Field 33. These fields, which were the last ones to be harvested this year, covered 168 acres.

Mill Workers Go To Pineapple Field

Arrangements have been completed with a pineapple company to take about 55 of our mill workers during our first few months of off-season.

The first group of men will start working for the pineapple company on Monday, August 10, and the second group on Monday, August 17. Starting time will be the same as this plantation for regular day shift employees--6:30 a.m.

The men will be paid through the Ewa payroll and normal deduction will be made for pension plan, etc. They will continue to be covered by our medical plan except for industrial accidents, which are covered by workmen's compensation.

As for the rate of pay, the men will be paid the applicable pineapple rate or their Ewa rate, whichever is higher.

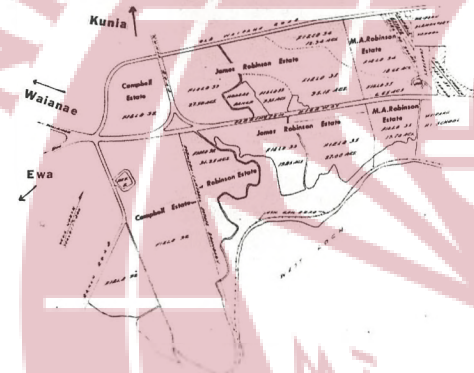
Another 31.25 acres of cane land in Field 32 will be lost by the plantation after harvest of the 1962 crop.

The loss of this highly productive land means a loss of about 2,500 tons in sugar production or a loss of income of more than 1/4 million dollars to your plantation every other year. It also means the permanent removal of scarce agricultural land from production. Along with our loss, the state and federal government will take a loss in tax revenues from the sugar income.

So far as we know, this land will be used for industrial and residential purposes.

Promotions

QUIRINO NARCISO - Hand Tractor Operator - GRADE III
SABINIANO LANIT-Planting Machine Crewman - GRADE II



Your Kokua Needed Again

Our annual Carnival is but a month away. Year after year virtually everyone in Ewa has helped with this project. Because of the wonderful support and superb teamwork, our Carnival has always been successful and consequently the E.R.A. has managed to give our community the best in all-round recreation program.

Time and time again, the community is asked to kokua--time, energy and donations--for this big project. And unfailingly the kokua is there. Let this year be no exception. Let us do whatever is needed to put on a good show and insure a healthy future for our E.R.A.

If you have not yet been asked to help in any way, call any one of the committee chairmen who will be tickled pink to sign you up. Also -- anything at all you might have lying around the house which can be used at the Carnival, such as comic books, books, plants, decorative knick-knacks, dishes, etc., would be most welcome.

Where help for our Carnival is concerned, time and energy or

Grinding of 1959 Crop Completed On August 3

The last load of cane from the 1959 crop was brought in at 3:45 p.m. on Monday, August 3rd. Grinding was completed at 4:50 p.m.

This is the earliest that Ewa has finished grinding its year's crop in its recent history.

The cause of this is last year's four-month strike. Forced neglect of the fields during the strike, particularly lack of irrigation, gravely damaged the 1958 and 1959 crops.

The final production figure for the year isn't in yet but it is expected to be about 34,800 tons, as compared to our normal output of about 60,000 tons.

We expect to catch up with our normal planting cycle and deal with the weed problem during the long off-season.

Grinding of our 1960 crop is scheduled to start on February 2.

donations, its "the more, the merrier" and, of course, higher the profit to be used for our community's benefit. Let's all kokua.

THE EWA HURRI-CANE
Published fortnightly by the Industrial Relations Office at Ewa Plantation Company, Ewa, Hawaii. Phone 28-3597

Managing Editor.....Chas. Valoria
Editor.....Kats. Wakatsuki
Typist.....Realonda Diaz
Staff Photographer.....Gervacio Blue
Printers.....PHOTO-OFFSET by Fisher Corporation, Ltd.

From Our Mail Bag

July 21, 1959

Editor, Hurri-Cane:

Please print the following letter in the Hurri-Cane.

Dear Friends of Ewa,

I have reached the Philippines on July 16. It was a smooth plane ride and I enjoyed it very much.

From this far off country I want to thank the many wonderful people for making this trip possible. Someone once said traveling is education, and from experience, I can say it's true in the short time I've been away.

I especially wish to share this trip with my fellow scouts.

My trip has been wonderful. My two days at Tokyo were spent at the Imperial Hotel with conducted tours all over Japan.

Soon after we were flying to Manila. Upon reaching Manila we were greeted by the Filipinos and we were soon at the camp site. Today's our fifth day here and it's been wonderful.

Before I close I want to thank Mr. Tanaka, my Scoutmaster for his leadership that enabled me to attend the 10th World jamboree, and my high rank in scouting.

May God bless you all and Aloha until I see you again.

Most grateful,

/s/Ronald Nakasono

YOU SET THE EXAMPLE

Your child will follow your example, so be careful what you say or do. The way you act in front of your children will be just about the way they will act when on their own.

Do you brag to your family about how fast you drive?

Do you tell your youngsters to keep their roller skates off the floor, then leave your yard tools where they can be tripped over?

Wise parents follow these rules:

1. Respect and obey the rules, whether you are behind the wheel, at work or at play. Don't expect Junior or Sister to abide by a law you break.
2. Be extra careful in front of your children. Prove to your child that grown-ups believe that it is smart to play it safe. For example, always use the crosswalk and look in both directions before crossing streets.

Remember - the safety that begins at home helps to make your world a safer, better place to live.

--From Ewa Plantation Co. Weekly Safety Letter

Ewa's Oldtimers

ESTEBAN DACUNYAN, a native of Bacarra, Ilocos Norte, P.I., came to Hawaii on the S.S. President Pierce in 1924.

He came to Hawaii and to Ewa through the HSPA recruitment office in Manila.

Esteban has been with us since May 24, 1924--a period of 35 years and two months. From 1927 to date he has been an irrigator.

Esteban is married to the former Eugenia Ramel of Bacarra, Ilocos Norte, P.I. They have a daughter, Mrs. Mariano Edralin. Both his wife and daughter are residing in Bacarra, Ilocos Norte, P.I.

In October of 1953, he took a 3-month leave of absence to the Philippines to visit his family.

December 31, 1959, Esteban will retire from this Company. He plans to return to his homeland in March, 1960.



In Sympathy

The people of Ewa extend their deepest sympathy to the family of the late Mrs. Tatsu Ushijima.

Mrs. Ushijima, 87, of Tenney Village, passed away on Tuesday, July 28 at the Ewa hospital.

She is survived by two sons-in-law, Hango Tanaka and Isamu Neys, and several grandchildren.

Our Apology

Our apology to Keichi Furukawa who appeared in the July 24th issue in oldtimer column. We had his date of employment at Ewa as May 15, 1954. It should have been May 15, 1924.

The highest temperature to date this year, 91°, was recorded on Wednesday, July 29, and a maximum of 90° was recorded on Tuesday, Thursday, and Friday.

Parson's Corner

By Dr. Williston Wirt
Ewa Community Church

Do you ever get "fed up" with life? Does your situation sometimes seem intolerable, so that you feel sorry for yourself, and wish that fate had given you a better deal? Do you get "down in the mouth" at times, and resentful and bitter? I have a remedy to suggest -- one that will stay with you as long as you live.

Take a trip to Kalaupapa. Visitors are now permitted to go there, and be taken on a tour of Hawaii's famous Hansen's Disease Settlement by a cured patient, Isaac Keao, in a comfortable limousine. First you get permission from Dr. Hirshey's office at the Honolulu Board of Health. Then you fly over at 9:00 a.m. on one of the Andrew Flying Service planes -- either the "Father Damien" or the "Siloama". Siloama is Hawaiian for Siloam, the famous healing spring of the New Testament, and is the name of the Protestant Church built in 1871 by the victim whom society had cruelly cast out. You will be met at the plane, and given a five-hour tour of the entire settlement. (You must bring your own lunch). At 2:00 p.m. you return to the plane, and fly back to Oahu. Many people are taking this trip these days, and almost without exception they speak of it as one of the greatest experiences of their lives.

I'm sure that if there are any individuals on the face of the earth who are entitled to be resentful and bitter, and wish fate had given them a different deal, it is those residents of Kalaupapa. Yet I have never in all my life known a group of people who have overcome their despondency, and transformed life into a joyous, meaningful pilgrimage, as the Christians at Kalaupapa. Since the war, many have been cured by the new sulfa drugs. But if you go to Kalaupapa expecting to pity those who bear the scars and deformities of this disease, I guarantee that it will be the other way around. You'll come back pitying yourself for your own lack of appreciation of life's manifold blessings. You'll be ashamed of your own paltry faith, that isn't adequate to meet the lesser obstacles life thrusts in your path. And you will marvel how God has wrapped His Aloha about those afflicted brothers and sisters of ours, so that they proclaim, with full assurance: "I will fear no evil, for Thou art with me."



Harvesting of our last fields for 1959 crop..This is the land we are losing to the Robinson Estate.

For research only and not for reprint, distribution, or display.

John Manlooyo On All-Hawaii Rifle Team



John Manlooyo of Fernandez Village was selected from among scores of competitors as one of six to represent all-Hawaii rifle team to compete against rifle teams from all over the Mainland at Camp Perry, Ohio, August 15-29. He will be leaving for Camp Perry on Sunday evening, August 9th. This representative group from Hawaii is non-service connected. John acquired his skill in handling the M1 during his hitch in the Army from February, 1942 to December, 1945.

John works for Ewa Plantation as an irrigator.

You must give some time to your fellowmen. Even if it's a little thing, do something for those who have need of help, something for which you get no pay but the privilege of doing it. --Albert Schweitzer

14th Annual Soto Y.B.A. Convention Slated for August 12-16 in Ewa

About 100 delegates from all corners of the new state of Hawaii are planning to attend the 14th annual Soto Y.B.A. Convention which will be staged in Ewa August 12-16. The opening ceremonies will be held at the Ewa Soto Church on the 12th at 1:00 p.m. Assistant Manager Ed Bryan will welcome the delegates to Ewa.

The convention program includes meetings, tour around the island, farewell banquets, etc. In connection with the Convention, there will be a special morning service at the church on Sunday, August 16, to celebrate the 10th anniversary of the church. A souvenir pamphlet of the anniversary will be dedicated to Reverend Ernest Kaundinya Shinkaku Hunt.

The officers for the Ewa Soto Y.B.A. are: Donald Oya, president; Akira Azuma, vice president; Doris Watanabe, secretary; Lorraine Suzuki, corresponding secretary; and Beatrice Onitsuka, treasurer. The auditors are Richard Matsufuru and Esther Suga. The advisor is Reverend Ozawa.

Through the Town

NEW ARRIVALS...A bouncing baby boy was born to Mr. and Mrs. Joseph Anguay of Fernandez Village on Wednesday, July 15, at the Ewa hospital. **JOSEPH ANGUAY, JR.** weighed in at 7 pounds 3 ounces at birth. His dad is with the field department.

JULIA MAY VILLANUEVA was born on Friday, July 24 at our hospital. She tipped the scales at 5 pounds 3 ounces at birth. She is the daughter of Mr. and Mrs. Alfredo Villanueva of Fernandez Village. Alfredo is with the factory department.

We received a birth announcement from one of our former employees who now resides with his family in Inglewood, California.

Mr. and Mrs. Harry Miyashiro were blessed with a daughter, **LORI RIEKO**, on Sunday, July 23, at the Daniel Freeman Memorial Hospital. She weighed 6 pounds 4 ounces at birth.

The Miyashiros have two other daughters---**Carie Naomi** and **Joni Shizue**.

Mr. and Mrs. Wataru Takaki recently returned from their six weeks vacation to the Mainland. They toured many scenic places in California and in Virginia.

Ewa postmaster, **Harry Ching** and his wife, **Elizabeth**, recently returned from their trip to the Mainland. Returning with them was their daughter, **Elena**, who graduated from Michigan State College. The Chings toured the East Coast, New England states and Canada.

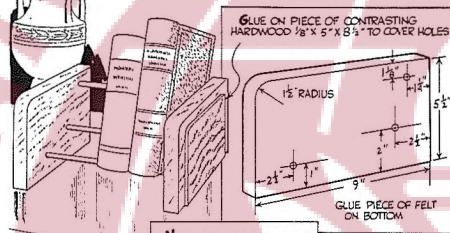
Our Progress

	7/18/59	8/1/59
Acres Ratooned		
Acres Planted to Date	3,422	3,498
Balance to be Planted	401	467
Acres Harvested to Date	551	484
Tons Sugar for the Week - 96° DA	3,884	4,322
Tons Sugar Shipped to Date	1,528	1,367
Tons Sugar Per Acre to Date	31,710	34,343
Tons Cane Per Ton Sugar to Date	8.28	7.96
	8.63	8.66

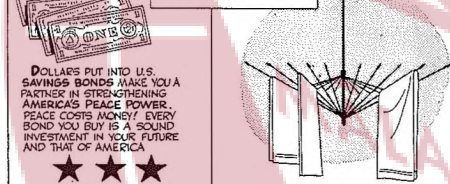
How to Do It

by HAROLD HEWITT

THIS DOWEL BOOK RACK TILTS YOUR BOOKS DISPLAYING THE TITLES FOR EASIER REFERENCE. IT IS MADE WITH 1/4" HARDWOOD AND 3/8" DOWELS WHICH ARE CUT TO DESIRED LENGTH OF RACK AND GLUED IN DRILLED HOLES.



NEED MORE DRYING SPACE? AN OLD UMBRELLA FRAME MAKES A GOOD RACK FOR DRYING CLOTHES AND TAKES UP VERY LITTLE ROOM. IT MAY BE STORED AWAY IN A SMALL SPACE.



Social Security Seeks Claimants

Persons who have been receiving disability benefits through the Honolulu Social Security Office are being contacted to determine if they have any dependents who could be receiving monthly benefit checks, according to Edward Ichiyama, Social Security Representative.

The 1958 amendments to the Social Security law provide that the dependents of disabled beneficiaries can qualify for benefits under the same rules as the family of a retired worker. Children under age 18, children who were disabled before age 18 and cannot support themselves, and the spouse of the disabled worker who meets dependency tests may qualify as dependents. These payments are first payable for the month of September, 1958.

Another provision of the law was to make it easier for disabled adult "children" to qualify. Before, a disabled child had to be getting at least half support from the parent. This requirement has been eliminated. Parents of a deceased worker could not previously qualify for benefits, even if they were dependent, if the worker was sur-

Reminder

To the members of the Ewa Japanese Athletic Club. The annual meeting will be held on Tuesday, August 11, 1959 at 7:30 p.m. The annual report will be given and elections of new directors for the next two years will be held. All members are welcome to attend. Refreshment will be served. Many door prizes.

Club Show

This Saturday, August 8, the Ewa Japanese Club will present a movie "TENRYU NO KARASU"---The Raven Kid from Tenryu---at the club grounds. It stars Shintaro Tatsu, Shoji Unewaka, Joji Tsurumi, Kyo Ko Aoyama, Tokiko Mita and Tamao Nakamura.

lived by a widow, widower or child. This provision has been changed. It is now only necessary to prove that dependency existed, Mr. Ichiyama said. The Honolulu Social Security Office expects these changes to give many more local residents monthly Social Security checks. Dependents becoming eligible under 1958 amendments should make application before the end of September 1959 to prevent any loss of benefits.

Sons and Daughters Perform for Mothers and Fathers on Parents' Night

The Summer Fun youngsters gave real entertainment to a crowd of about 300 at the Parents' Night program held at the Tenney Center pool on Thursday evening, July 30.

Youngsters from ages 4 to 12 surprised their parents with their unsuspected talent to sing, dance, act and swim in the hour-and-half program.



In the five-year-old group, our own king of the rock and roll, Norman Oshiro, swooned the audience with his singing.



Hula dancers from ages 4-8 years old entertained the parents with their hula hoop dancing.



Our Summer Fun Program chairman, Mrs. Yukio Omiya, presented a gift of appreciation to five volunteer leaders who generously gave their time and energy to help out with the program. They are from left to right, Mrs. Tony Bise, Mrs. Charles Aina, Miss Cynthia Tanaka, Miss Sharon Takiguchi, and Mrs. Kazumi Sanehira.

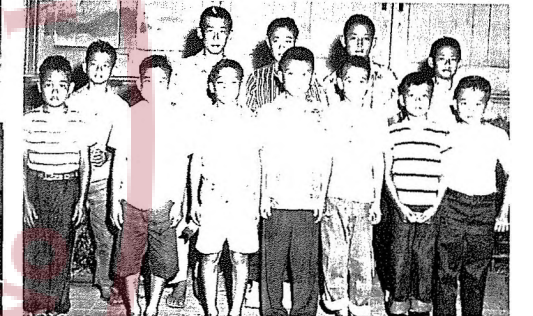
Ewa Wins Runner-up Spot In Summer Olympics

Over 200 youngsters representing summer fun groups from Aiea, Pearl City, Waipahu, Waiialua, Nanakuli, Waiānae and Ewa participated in the 2nd Annual Leeward Oahu Junior Chamber of Commerce Summer Olympics at the Tenney Recreation on Saturday, July 25.

Aiea, last year's runner-up won this year's championship with a total of 200 points. Ewa, last year's champs, came in second with 167-1/3 points. The others followed in this order: Waipahu 163, Waiānae 106, Nanakuli 81, Pearl City 65-5/6, and Waiānae 51-1/3. The two outstanding participants from Ewa were the brother-sister combination of Stanford and Leslie Ann Ornellas. Each participant was allowed to enter in only three events and Stanford and Leslie Ann both won first place in all three events they entered. Between them they garnered 54 points based on nine points for first place.

The other participants from Ewa also did well. We're proud that we have so many outstanding athletes in our community. We're proud more so of the way the youngsters conducted themselves according to the rules of fair play and good sportsmanship.

Winners From Ewa...



Front row, left to right, Clifford Yamoka, Clayton Kiriu, John Murata, Alan Matsushima, Stanford Ornellas, Gordon Narusawa and Layton Wakatsuki.

Back row, same order, Dennis Imada, Stanley Takiguchi, Alan Watanabe, Gory Wakatsuki and Thomas Sekine. Missing from the picture is Paul Ishimitsu.



Front row, left to right, Janice Uyeno, Faye Kikuta, Shyl Yamasaki, Claudia Ishihara, Linda Yamane and Charlotte Hats.

Back row, same order, Patricia Sekine, Grace Sakai, Deborah Anuha and Leslie Ann Ornellas.

Colors fade, temples crumble, empires fall, but wise words endure. Faith of one person in another is the basis of human relationships.

for reprint, distribution, or display.