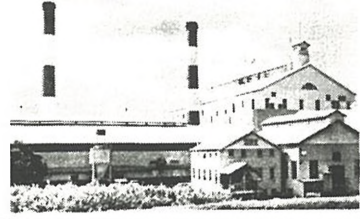


# EWA HURRI-CANE



VOLUME XI Ewa, Hawaii, November 25, 1960 NUMBER 24



John Manlolo, part-time staff member of the E.R.A., works out with just a small segment of the boys he is handling at the new Fernandez Village recreational park.

## John Manlolo Joins E.R.A. Staff on Part-Time Basis

Charles Aina, recreation supervisor, recently announced that John Manlolo has been added to the Ewa Recreation Association staff on a part-time basis chiefly to handle the new recreational set-up at Fernandez Village.

John was selected for this job because of the outstanding interest he has shown in the past in our youngsters in various E.R.A. sports activities such as the small-fry baseball, Pop Warner football, etc.

Mr. Manlolo, born in Ewa, is an employee of Ewa Plantation. His present job is irrigator with Division I. He and his wife, Alejandra, and their six children, John, Jr. (12), Christine (11), Glen (9), Victoria (6), and Veronica (6) and Cathy Ann (1) reside at Fernandez Village.

## All Employees to Take Annual Physical

During this off-season, all employees of this company will take their annual physical examination.

The first group, mill employees, started on their physical examinations last Monday. All other employees will be notified through their supervisors as the schedule is made out.

## C&H Gift Packages Available to Sugar Employees

New Christmas gift sugar packages in three assortments will be available to Hawaiian sugar industry employees this year.

Consensus is that they make ideal gifts to be sent Mainland and foreign friends.

Assortment No. 1 is similar to the gift packages of past years. It contains various C and H sugars, ranging from quarter ounce packets to cocktail cubes. This costs \$1.35 f.o.b. Crockett, or \$1.65 f.o.b. Aiea. Parcel post costs range from 55 cents to about \$2.20 depending on whether the packages are mailed from Crockett or Aiea, and destination.

Assortment No. 2 has the sugar plus macadamia nuts and jelly. This costs \$2.35 f.o.b. Crockett, and \$2.65 f.o.b. Aiea. Parcel post charges are similar to No. 1.

Assortment No. 3 is the deluxe version. It has the sugar plus an array of macadamia nuts and various Hawaiian jams and jellies.

This Assortment No. 3 costs \$3.35 f.o.b. Crockett, or \$3.65 f.o.b. Aiea. Mailing costs between 65 cents and about \$3.

Orders are to be sent to the California and Hawaiian Sugar Refining Corp., Aiea.

Growl all day and you'll feel dog tired at night.

## Beet Sugar Yield Increase is Noted Over Past 5 Years

Hawaiian sugar's chief competitor, the U.S. beet sugar producers, has made great production gains over the past five years, the U.S. Department of Agriculture reports.

Its production has come up from 1,998,701 tons raw value in 1954-55 to 2,340,000 in 1959-60.

The USDA accounts for this new record by pointing out greater acreage of sugar beets and record-high yields.

At the same time, the report indicated the production of sugar cane was down slightly from the 1958-1959 level.

Production figures for the past five years for beet sugar are: 1955-56, 1,729,200; 1956-57, 1,971,782; 1957-58, 2,212,748; 1958-59, 2,214,486; and 1959-60, 2,340,000.

Average annual beet production over the five-year period was well over 2,000,000 tons compared to Hawaiian sugar's normal production of somewhat over 1,000,000 tons.

## Castle and Cooke Offers to Sell Macadamia Nuts

For this Christmas season, Castle and Cooke, Inc. is offering to sell Keauu Orchard (Royal Hawaiian Brand) macadamia nuts to you at wholesale prices. They are packed in attractive tapa-motif gift boxes or in cases for home use or gifts.

Orders, in cash, from Ewa will be taken by Charles Ygloria, and should be placed early to avoid confusion and to insure your packages arriving in time for Christmas.

Keauu Orchard will not process any orders for mailing.

The following is the price list:

Item	Size	Unit Price
Green Tapa Gift Box	3/3 1/2 oz.	\$ 1.75
Brown Tapa Gift Box	6/3 1/2 oz.	3.19
Green Tapa Gift Box	6/7 oz.	2.84
Full Case	12/3 1/2 oz.	5.26
Full Case	12/7 oz.	9.68
Full Case	12/12 oz.	15.86

## Christmas Toys Can be Boobytraps

"Don't give your child a boobytrap this Christmas!"

That's the advice of the National Safety Council, a non-governmental agency organized in 1913 to prevent all kinds of accidents—including those involving children's "harmless" toys.

"Some of the toys given youngsters as Christmas gifts," said Phil Dykstra, the Council's director of home safety, "can be lethal weapons."

"Not all the blame for toys that become hazardous to children after a few hours' use should go to the manufacturers," he said.

"Parents have as much—if not more—responsibility for toy safety as the manufacturers."

While Dykstra said he believes toy makers should keep safety foremost in mind—"And most reputable toy manufacturers do"—he recommends the following for parents:

1. Buy toys that do not have small removable parts or such unsafe parts as eye-threatening pieces of metal. "Learn from experience—and from other parents—what types of toys most often cause trouble."

2. Buy toys suited for the child at his particular age. "A chemistry set in the hand of a 5-year-old might be a deadly weapon. But it's not necessarily a bit unsafe for an older child who has been properly trained and supervised."

3. Supervise use of toys your children get for Christmas. "If you see that your child is too young for a particular toy," Dykstra advised, "put the toy on a shelf until it's ready for safe use."

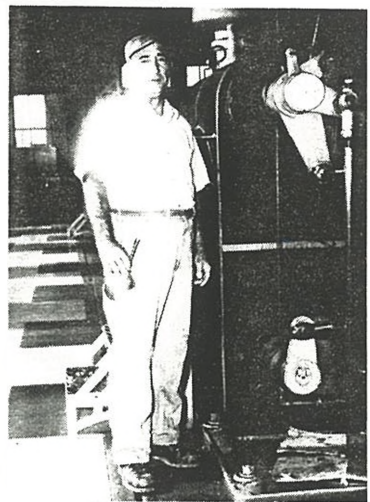
"Manufacturers are doing their best to produce safe toys. With the help of parents, toy accidents can be virtually eliminated."

**THE EWA HURRI-CANE**  
Published fortnightly by the Industrial Relations Office at Ewa Plantation Company, Ewa, Hawaii. Phone 28-3591

Managing Editor.....Chas. Ygloria  
Editor.....Kats Wakatsuki  
Typist.....Realonda Diaz  
Staff Photographer.....Gervacio Blue  
Printers.....PHOTO-OFFSET by Fisher Corporation, Ltd.

## Ewa's Oldtimers

Meet our oldtimer, FRANK GARCIA, who started his career at Ewa when he was 15 years old. Frank was born in Atarfe, Granada, Spain, forty-nine years ago. He was an infant when he arrived in the islands with his parents, Mr. and Mrs. Joe Garcia, and three other members of the family. His father came directly to Ewa Plantation Company.



Frank attended Ewa school. On September 3, 1926, he gained employment at this company. He started as water boy, then to a bango boy, locomotive brakeman, fireman, pump repairman, oilman at Pump No. 7. In 1944, he transferred to the machine shop and held the job of junior machinist for 14 years. In 1958, he transferred to the field department as a knapsack sprayer. In 1959, he transferred to the power house as an oilman, which is his present job.

Frank has to date accumulated 34 years and 2 months of service with Ewa Plantation Company.

His brothers are Joe, Manuel, Miguel who is one of our supervisor, Henry, and Tony. His two sisters are Mrs. Carmela Gonzales of Waianae and Mrs. Anita Fontes of Maui.

Frank became a naturalized citizen on June 26, 1946. Frank and his wife, Juanita, and their two children, Frank, Jr., 11, and Theodore, 4, make their home at Tenney Village.

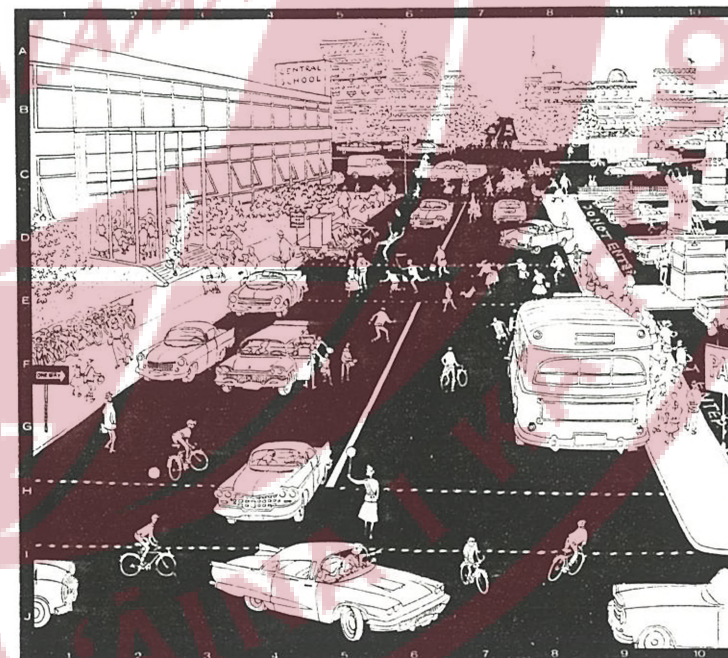
## THE SAFE WAY IS THE BEST WAY

Whether we are on the job, on the highway, at home or wherever we are, be sure to make every minute safe. One careless minute—one careless moment may result in serious injury for some and loss of life for others—perhaps yours or a member of your family! We live not day-by-day but one quick moment to the next.

There is no substitute for safety, so take time to be safe. THE SAFE WAY is not only the BEST WAY, it is the EWA WAY.

--From the Plantation Safety Letter

## Traffic Safety Quiz No. 4



## Can you find 10 traffic hazards in this picture?

Look sharp! This quiz checks more than the acuteness of your vision. It also tests your judgment of what's right and wrong on the road. Look again—then rate yourself against the list. But keep in mind that perceiving a traffic hazard is not enough. A good driver is always prepared to take instant action to avoid trouble.

We urge you to be alert, drive carefully, know the rules—and obey them. Remember: about 75% of all accidents are caused by the driver—not the car.

- 1. (Each hazard is located by letter and by number. For example, 'CB' indicates the location of the car on the street corner at the picture where line from 'A' and 'B' would cross.)
- 2. (Circle the letter and the number and mark 'X' on the list.)
- 3. (Circle the letter and the number and mark 'X' on the list.)
- 4. (Circle the letter and the number and mark 'X' on the list.)
- 5. (Circle the letter and the number and mark 'X' on the list.)
- 6. (Circle the letter and the number and mark 'X' on the list.)
- 7. (Circle the letter and the number and mark 'X' on the list.)
- 8. (Circle the letter and the number and mark 'X' on the list.)
- 9. (Circle the letter and the number and mark 'X' on the list.)
- 10. (Circle the letter and the number and mark 'X' on the list.)

## Your Car Has Built-in Safety—YOU!

Prepared by the Shell Traffic Safety Center in consultation with Dr. Leon Brody, Research Director, Center for Safety Education, New York University, and in cooperation with the Automotive Safety Foundation. SHELL OIL COMPANY, 1960

## Parson's Corner

Dr. Williston Wirt, Pastor  
Ewa Community Church

All aboard for Christmas, 1960! The streets are all decorated in downtown Honolulu, and the merchants are braced for the Christmas rush, and the year's most hectic buying spree. There will be lots of droll and colorful incidents, which reporters will write up cleverly and entertainingly, but I wonder if any of them will be as thought-provoking as one that appeared in the column of a mainland writer who specializes in the recounting of human foibles. "Shopping in these turbulent pre-Christmas days" he wrote, "I saw a little boy put his hand inquiringly on a ten-cent Christ-child, part of a dime-store display. 'What's this?' he asked his mother, who had him by the hand. 'Come on, come on, you don't want that!' replied the harassed woman, as she dragged the child away, and disappeared up an escalator."

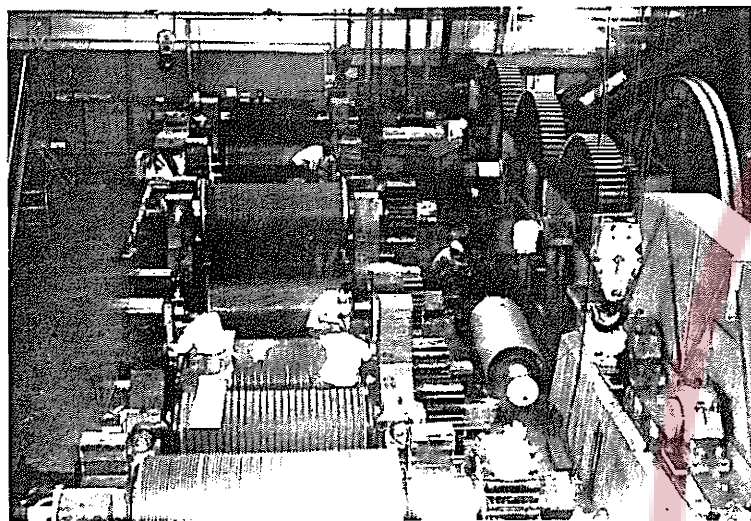
This points up one of the all-too-familiar aspects of our modern scene in the days that lead up to Christmas. For we are all driven by the ingenuity of the advertising experts, the window-dressers and the merchants and store-keepers to over-emphasize the material aspects of the Christmas observance. Don't get me wrong—I love all the decorations, and festivity of the Christmas season. I wouldn't trade our poinsettias that are breath-takingly beautiful, for the frosted windows and slippery sidewalks of the colder parts of our country! I gladly trade all the white Christmasses of Irving Berlin for the bright Christmasses of Kamehameha!

Nevertheless, I would remind you that Christmas is radiant with joy and gladness because of God's manifestation of Himself in the person of Jesus. Christmas is the bright shining of God's divine light in the darkness of man's human existence. Christmas is heaven's joy, to earth come down. Christmas is the Logos—Word—made flesh, to dwell among us in a life full of grace and truth. Everything else about Christmas is secondary to this. Everything else is only an overflowing of love and fervent appreciation because of this blessed divine act.

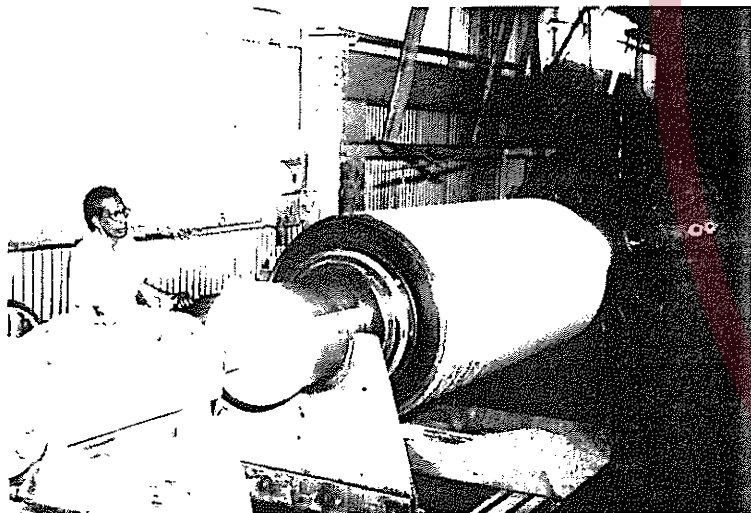
So in the next few weeks leading up to the great family festival of Christmas, are you going to let that hectic and harassed mother described by the columnist typify you, and your attitude and behavior? Or will you let the vision of God's wondrous grace and unbounded love arouse in you an overflowing sense of gratitude and joy, because of all that the coming of His son makes plain about this world, and all that dwell therein, and about the soul of man—its divine source and destination? Will your heart be a "busy inn" or an altar of praise, worship, and consecration?

### DOING SOMETHING DIFFERENT

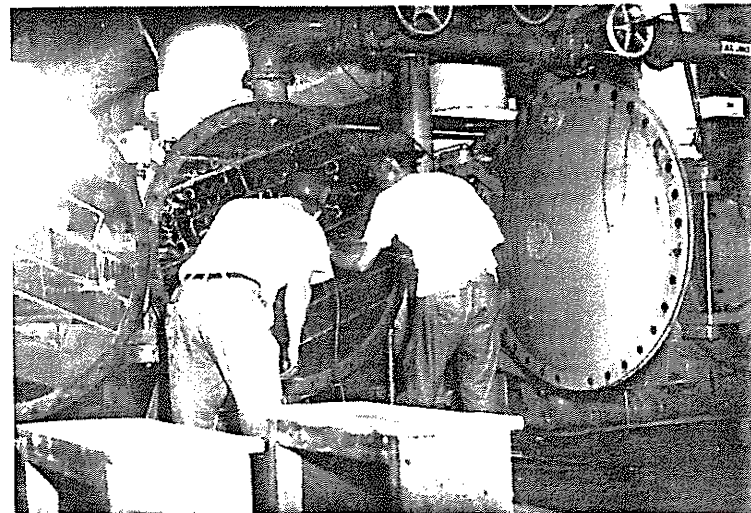
Nearly everyone in the mill is doing something different these days because of the off-season.  
A quick tour of the plant produced the accompanying photos of our industrious mill men at work on off-season repairs.



A top-side view of our crushing plant undergoing a major overhaul.



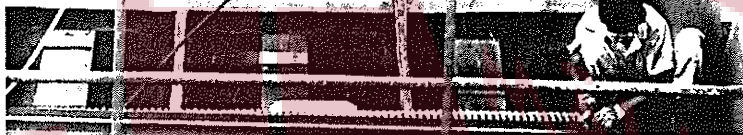
Jesus Agapay cuts grooves in one of the mill crusher-rollers with the giant lathe in the mill.



Fumio Tsutsumi and Susumu Ishii, both pan men during the grinding season, check one of the juice heaters for worn-out tubes.



Torajiro Sato, fireroom foreman, looks on while the bricklayers from Pell & Company put the finishing touches on the number five boiler.



Repairing one of the conveyors at the cane cleaning plant are left to right, Juan Marchan, cleaning plant mechanic, Monico Acosta, mill hand, Felix Dacuycuy, mill hand, and Ruperto Basilio, mill hand.



Alfonso De Guzman chips off the scales in a syrup tank with an electrical descaling gun.



A highly successful plant sale was held last Saturday at Ewa Beach by the Ewa Young Farmers.

### Through The Town With Our Y-Teens

NEW ARRIVALS....KAREN KIMIE MURAKAMI, second child of Mr. and Mrs. TOSHIO MURAKAMI of Fernandez Village, was born on October 28, at the Ewa hospital. Karen tipped the scales at 7 pounds 5 ounces at birth.  
Mr. and Mrs. Murakami, have another child, a son, Neil, a student of the E.R.A.'s pre-kindergarten.

Mr. Murakami is the mechanical ratooning foreman at this company.  
Tipping the scales at 5 pounds 8 ounces at birth is FELICIANO LOU QUIMOYOG, who was born at our hospital on October 30. Mr. and Mrs. ZOILO QUIMOYOG of Varona Village are the proud parents of Feliciano.

The Quimoyogs have three other children, Marilyn, 10, Zoilo, Jr., 9, and Divina, 7. Mr. Quimoyog is a Hand Spraying foreman at Ewa.

Mr. and Mrs. HIPOLITO RIGLOS of Fernandez Village are the proud parents of their second daughter, STACY ANNA. Stacy was born on November 15 at the Ewa hospital. She weighed 7 pounds 6 ounces at birth.

Mr. Riglos is a ground crewman in the harvesting division.

### Melancon Wins Turkey

The team of Milo Melancon, assistant office manager at Ewa, and B. O. Nielsen, retired commander of the Navy, scored a net 60 to win the turkey tournament held at the Oahu Country Club last Saturday.

### Classified Ads

WANTED. Full-time cook-housekeeper. Live in or out. Phone 283-170.

WANTED. Pin boys at Ewa alleys. Must be 16 or over. See "Punchbowl".

FOR SALE. Two citizens band transceivers in excellent condition for \$50.00 each. Phone 283-898.

Ewa Y-Teens at Waipahu high school known as the "Gidgets", recently completed the project of handling football gate tickets for all of Waipahu high school home games.

The officers of the club are: Joann Sato, president; Cynthia Nakasato, vice president; Sharon Horie, secretary; and Annette Sekine, treasurer.

\*\*\*\*\*  
This year's officers of the Ewa school 9th grade Y-Teens are: Becky Sekioka, president; Erlene Uyeda, vice president; Susan Murakami, secretary; Barbara Canney, corresponding secretary, and Amy Yamamoto, treasurer. Their advisor is Miss Nancy Mikami.

For their good deed for Christmas, this group is planning to make fruit baskets for the patients at Ewa hospital.

These girls are also planning to undertake a baby service project to help out the club's finances.

### Ewa Rout Waianae 19-1

Ewa defeated Waianae 19 to 1 last Sunday at the Ewa ball park in a Leeward AJA Junior Baseball League game.

Stan Ginoza who pitched the first four innings for Ewa allowed only two hits. Milton Jo finished the game.

Richard Itamoto, Jr. and Fred Higa each banged out a triple and a single to lead Ewa's hitting.

Ewa's next game will be against Waipahu Shinyukai at Waipahu on Sunday, November 27 at 1:30 p.m.

### EJAC Officers Elected

The recently elected officers of the Ewa Japanese Athletic Club Board of Directors are: Kiyoshi Yasui, president; Shungo Jo, vice president; Haruyuki Ogawa, secretary; and David Yamamoto, treasurer.

### Our Apology to....

Mr. and Mrs. Dennosuke Hasebe and Mrs. Ichiye Hikichi for the inversion of their pictures and stories in the last issue of the Hurri-Cane.

With our sincere apology, we again print their pictures, correcting the error.



Mr. and Mrs. Hasebe recently returned from a trip to Japan. Both of them are pensioners of Ewa Plantation. Mr. Hasebe retired on March 31, 1955 and Mrs. Hasebe on June 30, 1960. They reside at Tenney Village.



Mrs. Hikichi, who at various times in the past held temporary jobs at the Ewa hospital, recently gained her permanent status as hospital attendant. Mrs. Hikichi resides at Tenney Village with her husband, Kiyoshi.

### Ewa School PTA News

By Thelma Omiya

The Open House at Ewa School held on the 14th of November was very well attended by the parents. Kindergarten - Mrs. Harriet Sueda's class had a 148% attendance winning the attendance banner for the Primary department and also the ice cream treat. For the Elementary group, Mrs. Dorothy Arizumi's grade 6 class had 130.3% of the parents to win the attendance banner for this group. For the Intermediate group, Mr. Richard Sakamoto's class won the banner with 102.8%.

P.T.A. membership as reported by membership chairman, Shungo Jo, is now 385. Total membership for the year is expected to exceed 450.

P.T.A. will furnish shirts to both Elementary and Intermediate J.P.O.'s at the cost of \$1.85 each. These shirts are to be used only while on duty and are considered to be property of the school and are to be returned at the end of the school year.

Volunteers are still needed to assist at the crosswalk near the Ewa Shopping Basket for 1/2 hour (2:00 p.m. - 2:30 p.m.). The service includes the supervising of the J.P.O.'s work. The Traffic Commission has advised the P.T.A. to provide parental help in supervising these J.P.O.'s stationed there. Because of the distance away from

the school, the school should not be held responsible for providing J.P.O.'s at this intersection. But the safety of our children is being considered so J.P.O.'s continue to man the station there. However, without volunteer help, this service will have to be discontinued. If any mothers are free for the period 2:00-2:30, please contact the Ewa School, 283-771 for further information. Won't you please give your service for a week or so.

Mrs. Thelma Omiya represented Ewa School P.T.A. at the Hawaii's White House Conference on Children and Youth, November 16-19. A report of this conference will be made at the general meeting in January.

### Japanese Club Show

"STILL A GAMBLER" in color, starring Kazuo Hasegawa will be shown this Saturday at 7:00 p.m. by the Ewa Japanese Club.



A highly successful plant sale was held last Saturday at Ewa Beach by the Ewa Young Farmers.

The tremendous growth of new home owners at Ewa Beach contributed to the success of this undertaking.